

U.S. PUBLIC LAND SURVEY MONUMENT RECORD

Index No. E-3

State of Wisconsin }
County of Forest } ss.

History of original corner establishment:

Original Government Survey in 1865 by William E. Daugherty. East corrected between Sections 6 and 7, 48.17 chains, set Quarter Section Post. From which the following bear;

Hemlock	16"	S89°W	29 lks.
Birch	10"	N49°E	39 lks.

Description of corner evidence found:

No corner evidence recovered.

The corner position is re-established at proportionate distance and on line between the Southeast and Southwest Section Corners of Section 6.

I William B. Cochran, do hereby certify that on the 9th day of July, 1986, I found evidence of the South Quarter corner of Section 6 Township 40, North, Range 14 East, Fourth Principal Meridian, as described hereon; and that from this evidence I established a new monument and accessories as described hereon to perpetuate the original location of this corner.

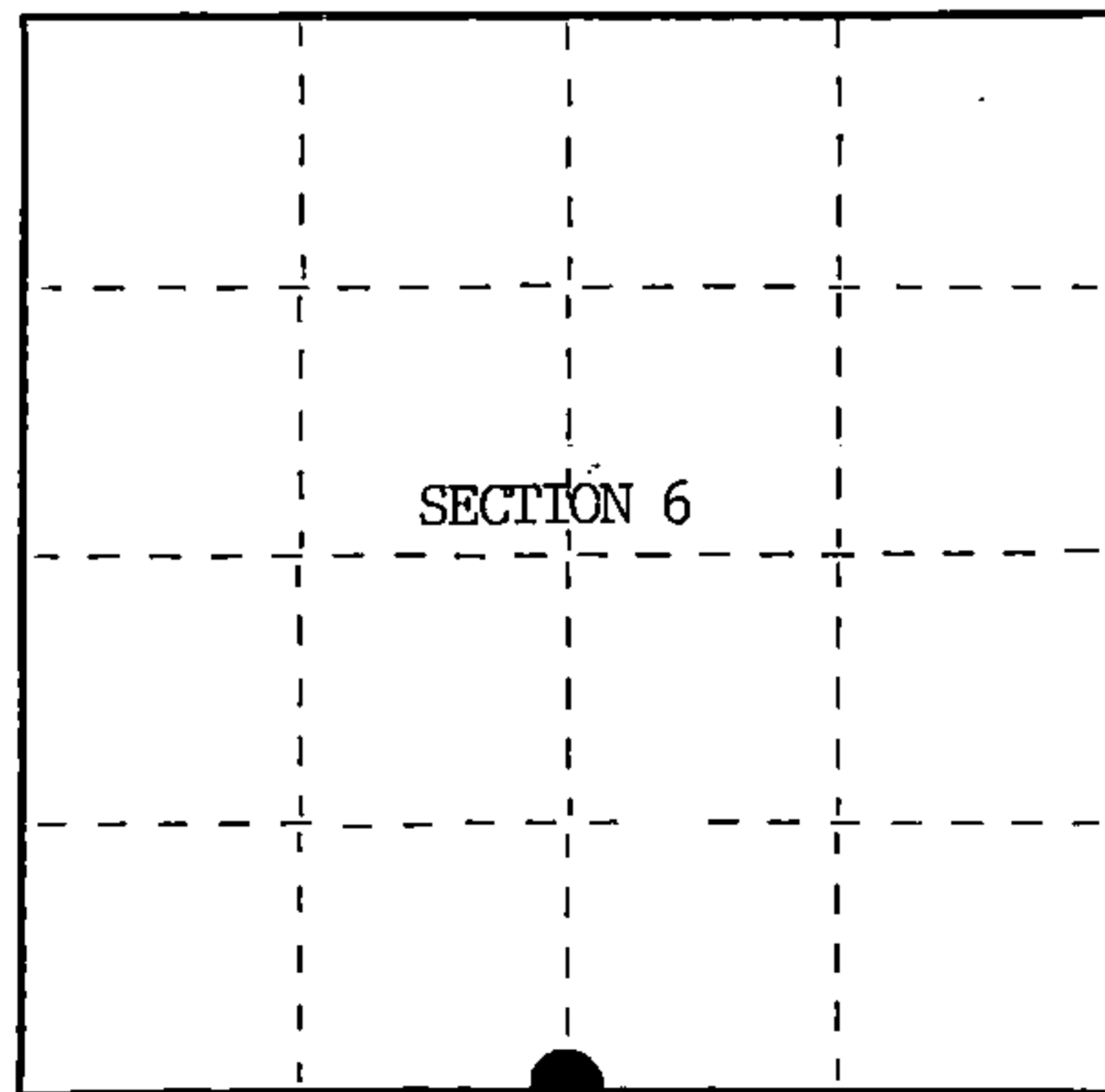
Resident witnesses:

Tony Tillman

Description of monument and accessories I established to perpetuate the original location of this corner.

At the corner position, set a 2½ inch diameter aluminum pipe monument, 3 feet long, 2½ feet in the ground, with an aluminum cap stamped; T40N R14E, 1/4, S6, S7, 1986, S-1107. From which the following new blazed and scribed bearing trees bear;

Maple	5"	N68°E	10.94 feet
Maple	6"	N16°W	37.80 feet
Steel Sign Post		NW	0.75 feet



○ = Corner monument restored.

Dated at Hiles, Wis., this 9th day of October, 1986

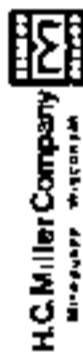
Signature William B. Cochran Title Land Surveyor Registration No. S-1107
(County Surveyor, Registered Land Surveyor, or other duly authorized official)

Office of Register of Deeds, County of Forest, I hereby certify that the within instrument was filed in this office for record on the 11th day of March, 1987 at 3:30 o'clock P. M.

Paul Aschenbrenner
(Register of Deeds)

By _____ Deputy

FORM NO. 985-A



Stock No. 26273

DOCUMENT NUMBER 132443

44014060020

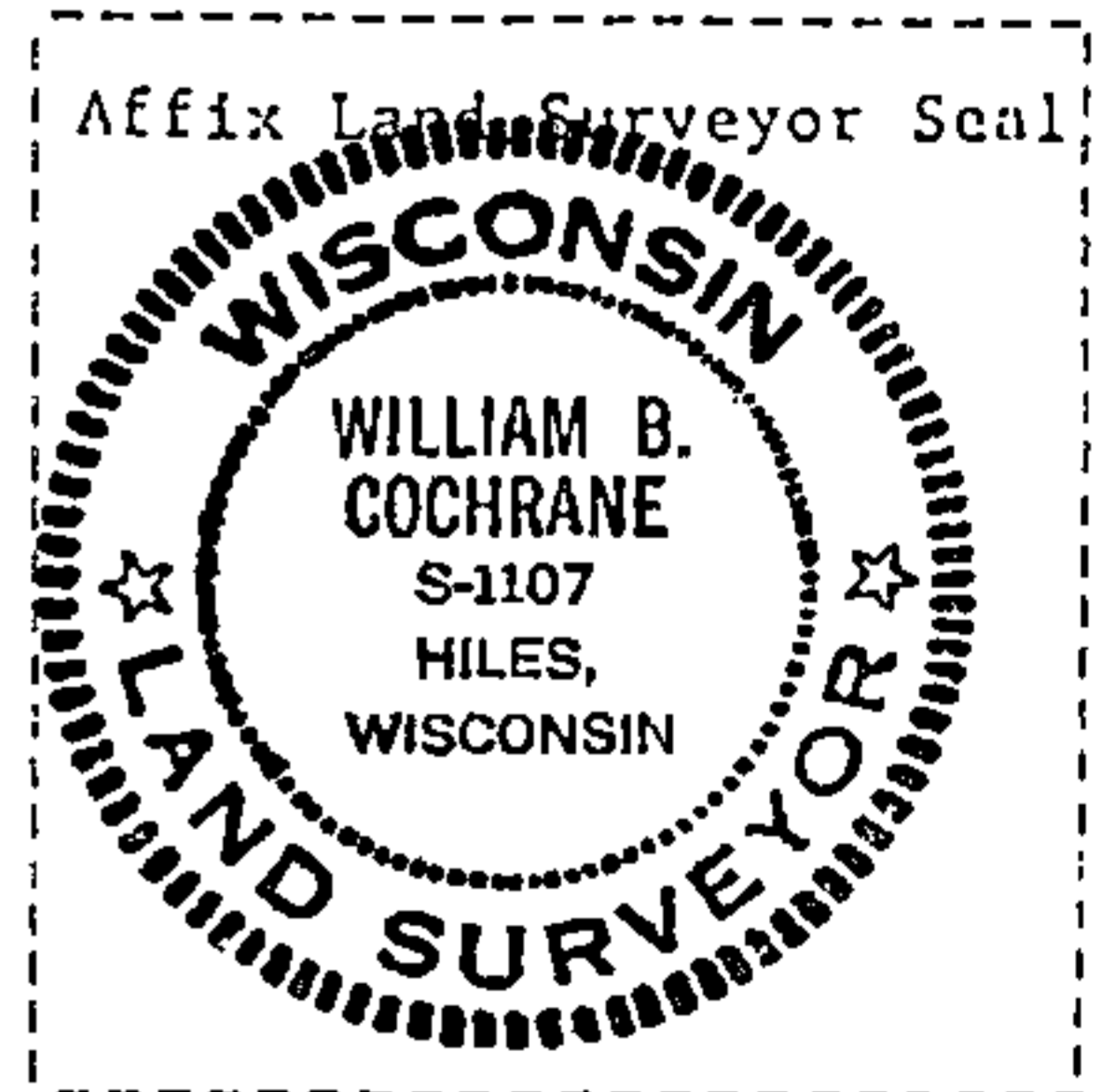
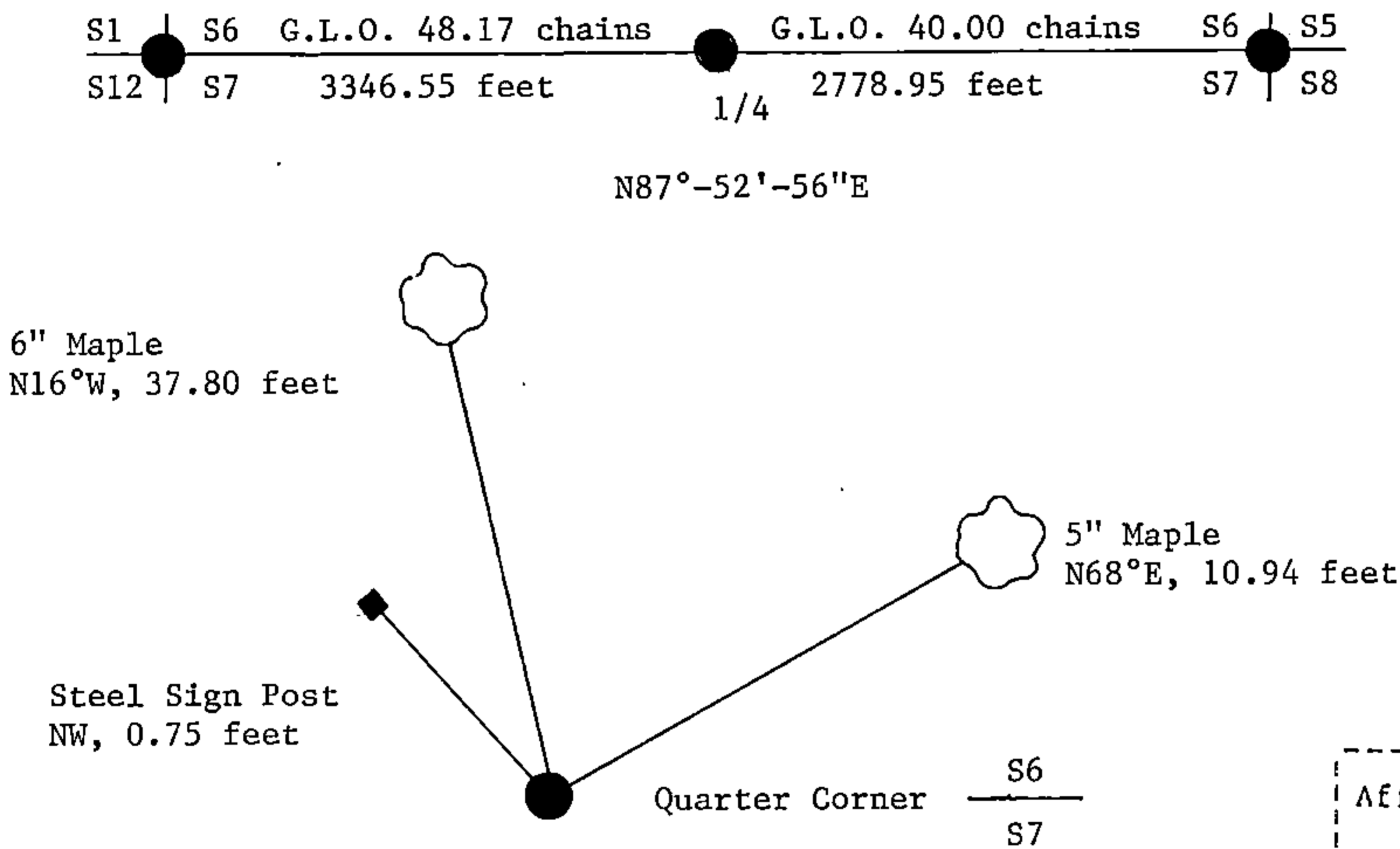
(e) Describe any material discrepancy between the location of the corner as restored or reestablished and the location of that corner as previously restored or reestablished by distance and direction. Show the discrepancy on the plan view drawing under (d), above. Show the distances between the corner as previously restored or reestablished and (1) the corner as restored or reestablished, and (2) to at least 2 of the witness monuments shown on the drawing in (d), above.

See drawing below.

(f) Was the corner restored through acceptance of (1) an obliterated evidence location, or, (2) a found perpetuated location?

(g&h) Was the corner reestablished through lost corner proportionate methods? If so, show the method, including the directions and distances to other public land survey corners used as evidence or used for proportioning in determining the corner location?

Re-established through lost corner proportionate methods.



(i) I, William B. Cochrane
 (type or print name) certify that the corner location shown on this record was determined by me or under my direction and control and that this U.S. Public Land Survey Monument Record is correct and complete to the best of my knowledge and belief.

William B. Cochrane October 14, 1986
 Signature Date

Certificate ready for filing: [Signature] 3-9-87
 District Ranger Date