

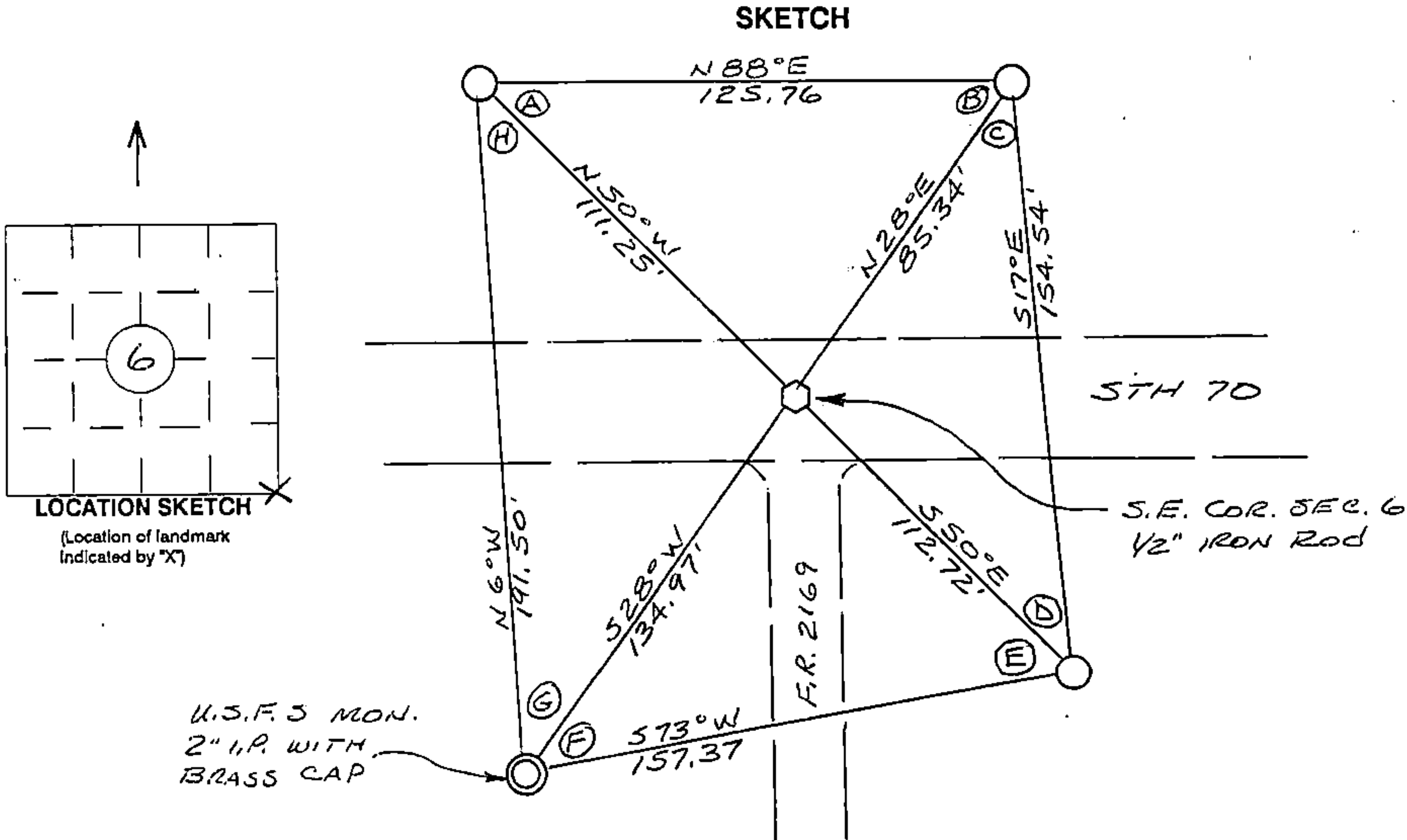
ORIGINAL ON FILE IN CO CLERK'S OFFICE
COPY HERE FOR REFERENCE

RECORD AND CERTIFICATION OF U.S.
PUBLIC LAND SURVEY CONTROL STATION

Wisconsin Department of Transportation

ED716 887

District 7	Project ID 9090-01-00	Located By J.R. WALLIN - SURVEY CREW CHIEF		
Corner S.E. COR. SEC. 6	Township T40N	Range (E,W) R14E	County FOREST	
Wisconsin Coordinates FROM AYRES	East (X) 2,311,213.18	North (Y) 294,772.44	Elevation (Z)	Zone N
Control Station Name	East (X)	North (Y)	Elevation (Z)	Zone
Horizontal - NORTH AMERICAN, 1927		CONTROL DATUM Vertical - MEAN SEA LEVEL, 1929 ADJUSTMENT		
SURVEY CONTROL Horizontal - Order		Vertical - Order		



I hereby certify that on the date of NOV. 7, 1994
the above corner was located by a marker and/or references established by

JEAN F. RESVICK S-802
(registered land surveyor) (registration no.)

I further certify that to perpetuate the location of said corner, on the date of
NOV. 7, 1994 at the exact location thereof,
a permanent marker or witness monuments consisting of
THREE 2 1/2" x 30" BERNTSEN MAGNETIC
ALUMINIUM MONUMENTS
were located as shown above.

ANGLE TABLE

A	=	41° 38' 46"
B	=	60° 01' 48"
C	=	45° 35' 10"
D	=	32° 44' 16"
E	=	57° 07' 54"
F	=	44° 32' 40"
G	=	34° 40' 32"
H	=	43° 38' 55"

Signature (District Survey Supervisor) COORD.
Jack R. Wallin

S.E. CORNER
(CORNER)
6
(SECTION)
40N
(TOWN)
14E
(RANGE)