

U.S. PUBLIC LAND SURVEY MONUMENT RECORD

Index No. A-13

State of Wisconsin } ss.
County of Forest

I, William B. Cochrane, do hereby certify that on the 23rd day of July, 1986, I found evidence of the Northwest Closing Section corner of Section 3, Township 40, North, Range 14 East, Fourth Principal Meridian, as described hereon; and that from this evidence I established a new monument and accessories as described hereon to perpetuate the original location of this corner.

Resident witnesses:

David Brownell

Tony Tillman

History of original corner establishment:

Original Government Survey in 1865 by William E. Daugherty. North between Sections 3 and 4, at 80.19 chains, intersect 4th Correction Line, 2.13 chains West of the Standard Quarter Section Corner of Section 33, T41N R14E. At the corner position, set a Wood Post, from which the following bear;

Hemlock	12"	S89°E	24 lks.
Hemlock	10"	S50°W	10 lks.

Description of corner evidence found:

No corner evidence was recovered.

The corner position is re-established at proportionate distance and on line between the Standard Section Corner common to Sections 33 and 34, and the Standard Quarter Section Corner of Section 34, T41N R14E.

Description of monument and accessories I established to perpetuate the original location of this corner.

At the corner position, set a 2½ inch diameter aluminum pipe monument, 5 feet long, 4 feet in the ground, with an aluminum cap stamped; T41N R14E, S34, S3, S4, CC, T40N, 1986, S-1107. From which the following new blazed and scribed bearing trees bear;

Cedar	8"	N53°E	18.32 feet
Cedar	7"	S30°E	23.82 feet
Cedar	12"	N26°W	28.23 feet
Steel Sign Post		West	1.00 feet

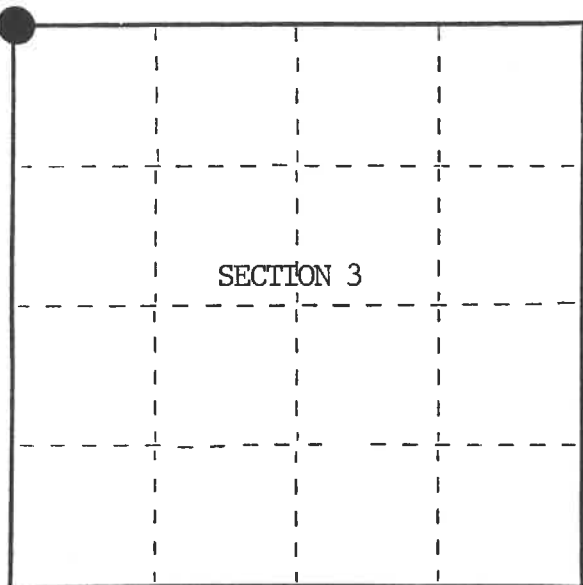
Dated at Hiles, Wis., this 28th day of October, 1986

Signature *William B. Cochrane* Title Land Surveyor Registration No. S-1107
(County Surveyor, Registered Land Surveyor, or other duly authorized official)

Office of Register of Deeds, County of Forest, I hereby certify that the within instrument was filed in this office for record on the 11th day of March, 1987 at 3:30 o'clock P. M.

Paul Achenbrenner
(Register of Deeds)

By Deputy



○ = Corner monument restored.

FORM NO. 985-A



Stock No. 26273

DOCUMENT NUMBER 132428

44014044000

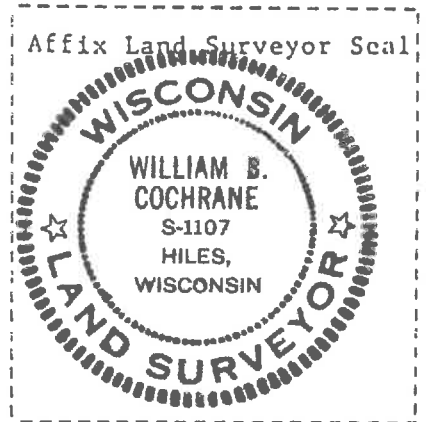
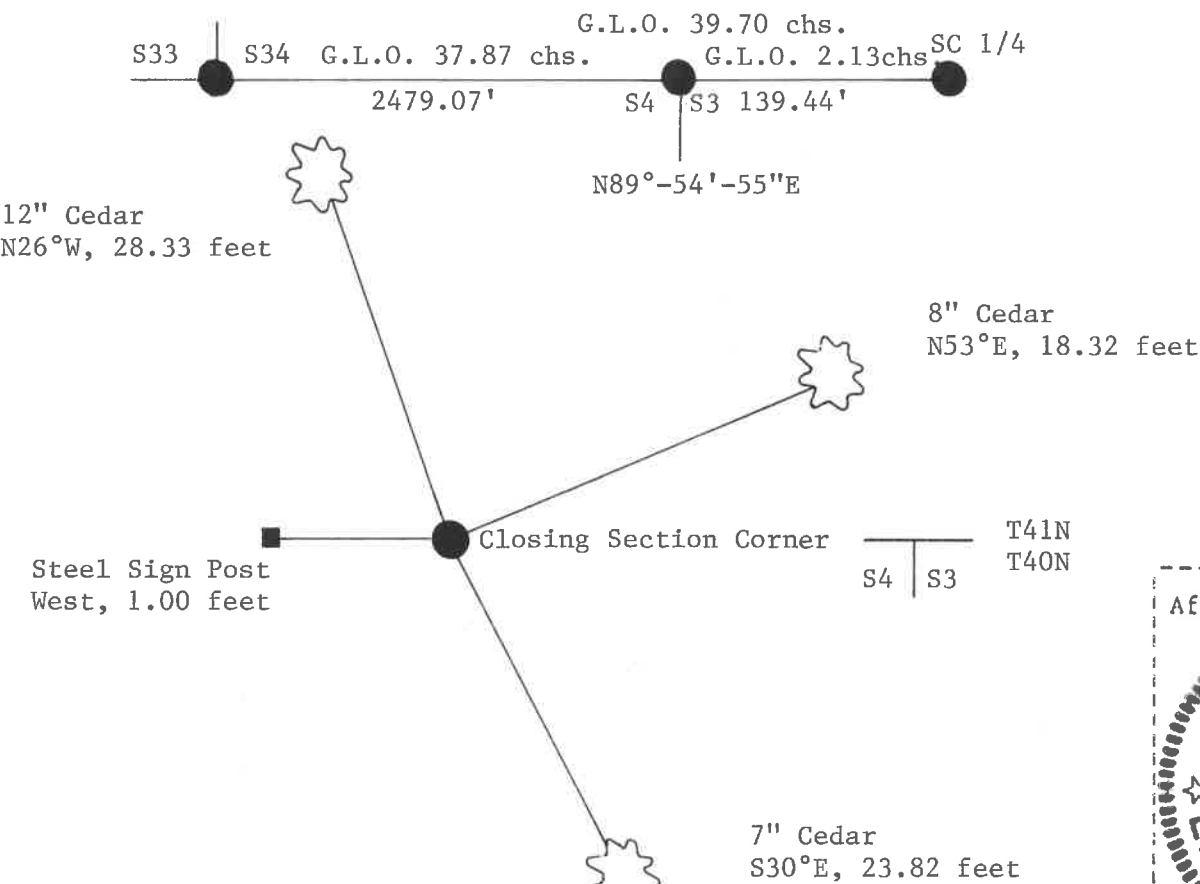
e) Describe any material discrepancy between the location of the corner as restored or reestablished and the location of that corner as previously restored or reestablished by distance and direction. Show the discrepancy on the plan view drawing under (d), above. Show the distances between the corner as previously restored or reestablished and (1) the corner as restored or reestablished, and (2) to at least 2 of the witness monuments shown on the drawing in (d), above.

See drawing below.

(f) Was the corner restored through acceptance of (1) an obliterated evidence location, or, (2) a found perpetuated location?

(g&h) Was the corner reestablished through lost corner proportionate methods? If so, show the method, including the directions and distances to other public land survey corners used as evidence or used for proportioning in determining the corner location?

Re-established through lost corner proportionate methods.



(i) I, William B. Cochrane
 (type or print name) certify that the corner location shown
 on this record was determined by me or under my direction and
 control and that this U.S. Public Land Survey Monument Record is
 correct and complete to the best of my knowledge and belief.

William B. Cochrane Signature November 5, 1986 Date

Certificate ready for filing: [Signature] District Ranger 3-9-87 Date