

**ORIGINAL ON FILE IN CO CLERK'S OFFICE  
COPY HERE FOR REFERENCE**

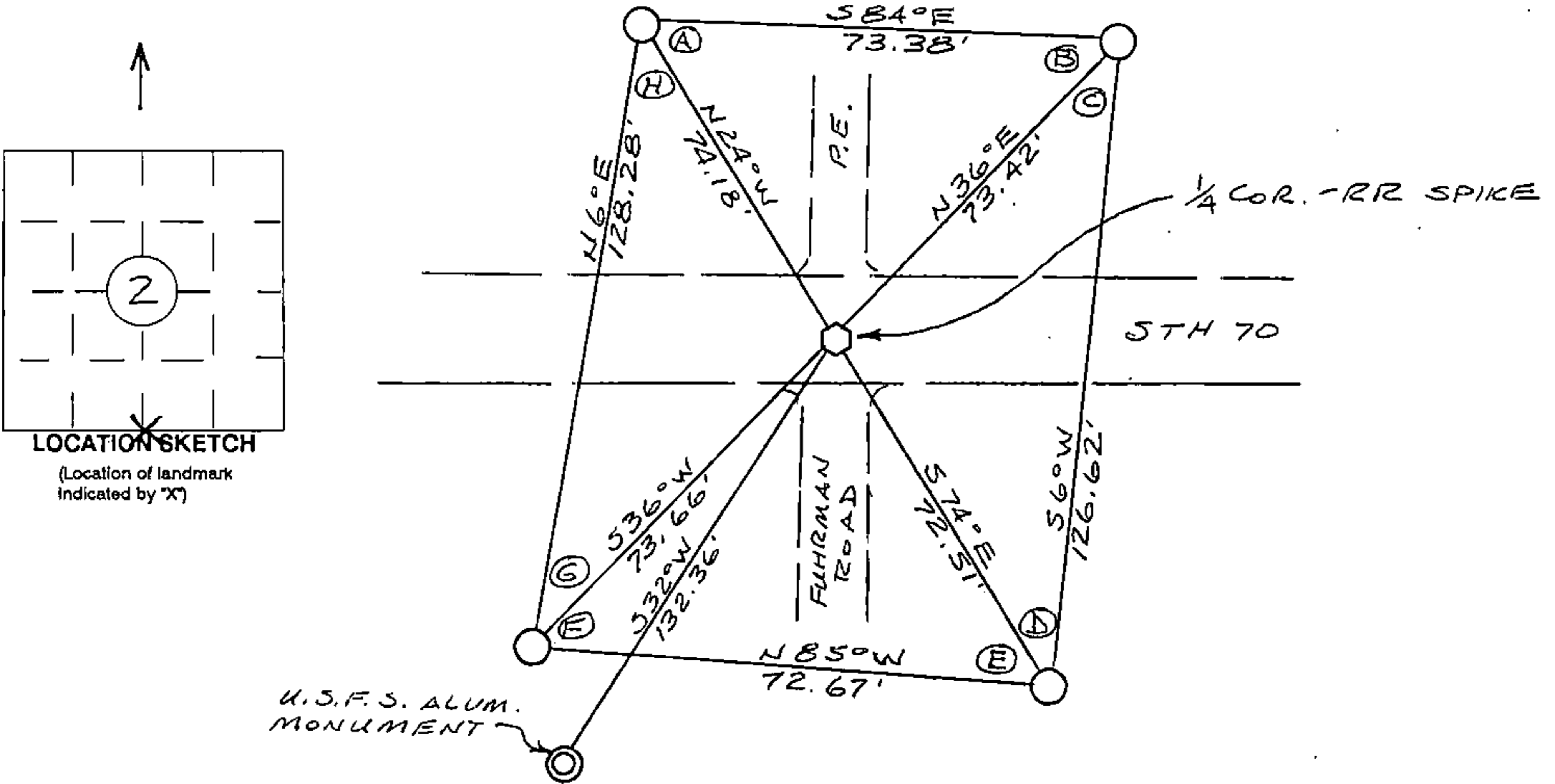
**RECORD AND CERTIFICATION OF U.S.  
PUBLIC LAND SURVEY CONTROL STATION**

Wisconsin Department of Transportation

ED718 887

District <b>7</b>	Project ID <b>9090-01-00</b>	Located By <b>J. R. WALLIN - SURVEY CREW CHIEF</b>		
Corner <b>S 1/4 COR. SEC. 2</b>	Township <b>T40N</b>	Range (E,W) <b>R14E</b>	County <b>FOREST</b>	
Wisconsin Coordinates <b>FROM AYRES</b>	East (X) <b>2,329,350.70</b>	North (Y) <b>294,964.30</b>	Elevation (Z)	Zone <b>N</b>
Control Station Name	East (X)	North (Y)	Elevation (Z)	Zone
Horizontal - <b>NORTH AMERICAN, 1927</b>		CONTROL DATUM Vertical - <b>MEAN SEA LEVEL, 1929 ADJUSTMENT</b>		
Horizontal - _____ Order		SURVEY CONTROL Vertical - _____ Order		

**SKETCH**



I hereby certify that on the date of NOV. 9, 1994  
the above corner was located by a marker and/or references established by

WILLIAM B. COCHRANE S-1107  
(registered land surveyor) (registration no.)

I further certify that to perpetuate the location of said corner, on the date of  
NOV. 9, 1994 at the exact location thereof,  
a permanent marker or witness monuments consisting of

FOUR 2 1/2" x 30" BERNTSEN MAGNETIC  
ALUMINUM MONUMENTS  
were located as shown above.

44014020020:

Signature (District Survey Supervisor) COOR. D.  
Jack R. Wallin

SOUTH 1/4 COR.  
(CORNER)  
2  
(SECTION)  
40N  
(TOWN)  
14E  
(RANGE)

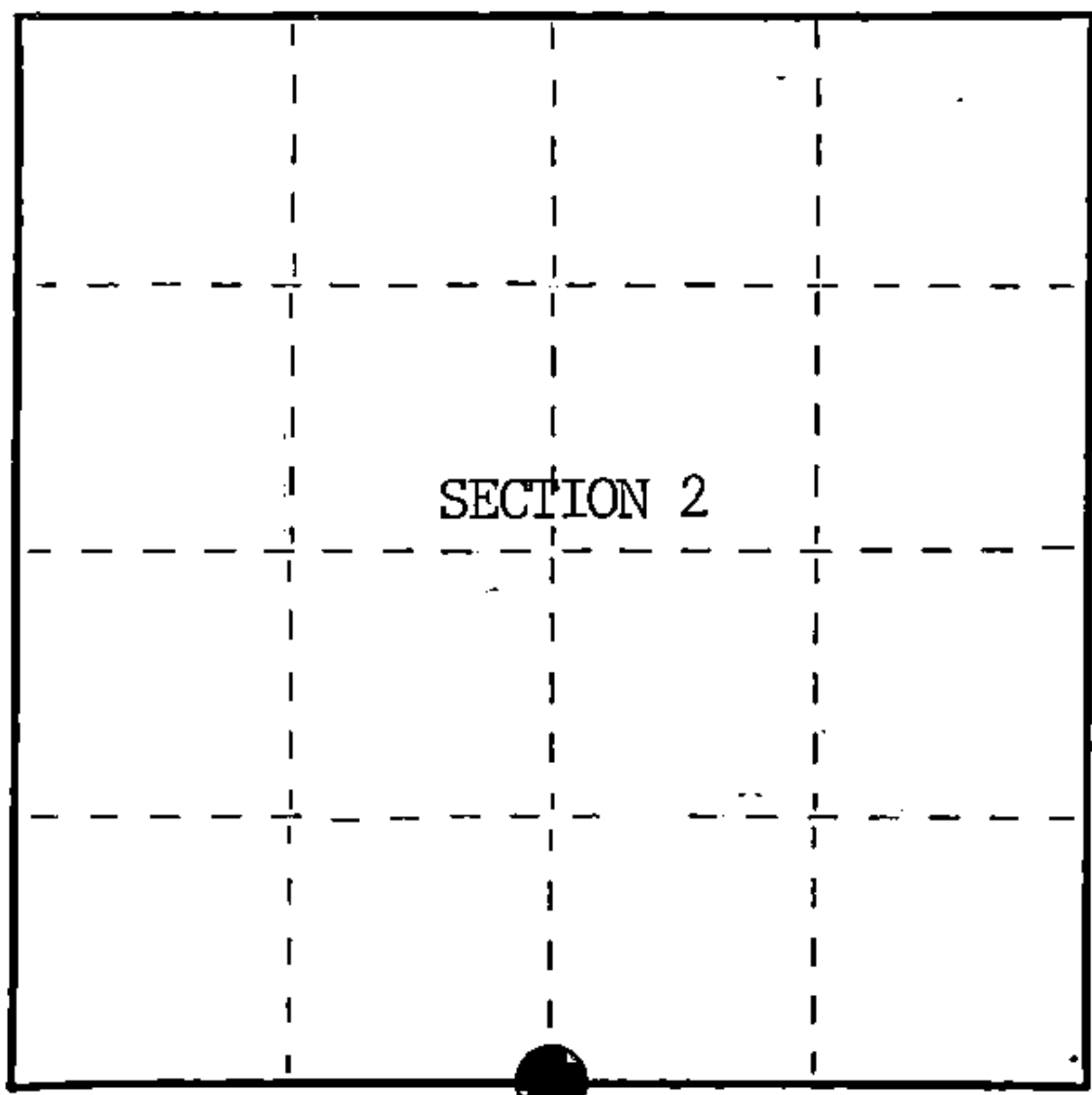
U.S. PUBLIC LAND SURVEY MONUMENT RECORD

Index No. E-19

State of Wisconsin }  
County of Forest } ss.

I William B. Cochrane, do hereby certify that on the 29th day of February, 1985, I found evidence of the South Quarter corner of Section 2 Township 40 North, Range 14 East, Fourth Principal Meridian, as described hereon; and that from this evidence I established a new monument and accessories as described hereon to perpetuate the original location of this corner.

Resident witnesses:  
Tony Tillman



○ = Corner monument restored.

History of original corner establishment:

Original Government Survey in 1865 by William E. Daugherty. West corrected between Sections 2 and 11, 40.32 chains, set Quarter Section Post to Sections 2 and 11, from which the following bear;

Birch	10"	N37°W	8 lks.
Birch	12"	S42°E	13 lks.

Description of corner evidence found:

No corner evidence was recovered.

The corner position was re-established at proportionate distance between the Southeast and Southwest Section Corners of Section 2, and in the Center Line of State Highway 70.

Description of monument and accessories I established to perpetuate the original location of this corner. At the re-established corner position, set a railroad spike flush with the surface of State Highway 70, from which the following bear;

Northwest Corner of Cabin	S25°E	146.72 feet
Southeast Corner of School	N44°E	114.60 feet (slope distance)
2 1/2" x 36" aluminum monument	S32°W	132.48 feet
Stamped; Witness Corner, T40N R14E, 1/4, S2, S11, 1985, S-1107, N32°E, 132.48'		
Steel Sign Post bears Southwest 0.75 feet from Witness Corner.		

44014 020020

Dated at Hiles, Wis., this 2nd day of January, 1986

Signature: William B. Cochrane Title: Land Surveyor Registration No. S-1107  
(County Surveyor, Registered Land Surveyor, or other duly authorized official)

Office of Register of Deeds, County of Forest, I hereby certify that the within instrument was filed in this office for record on the 11th day of March, 1987, at 3:30 o'clock P.M.

Paul Achenbrenner  
(Register of Deeds)

By Deputy

FORM NO. 985-A  
H.C. Miller Company  
MILWAUKEE, WISCONSIN

Stock No. 26273

DOCUMENT NUMBER 132447

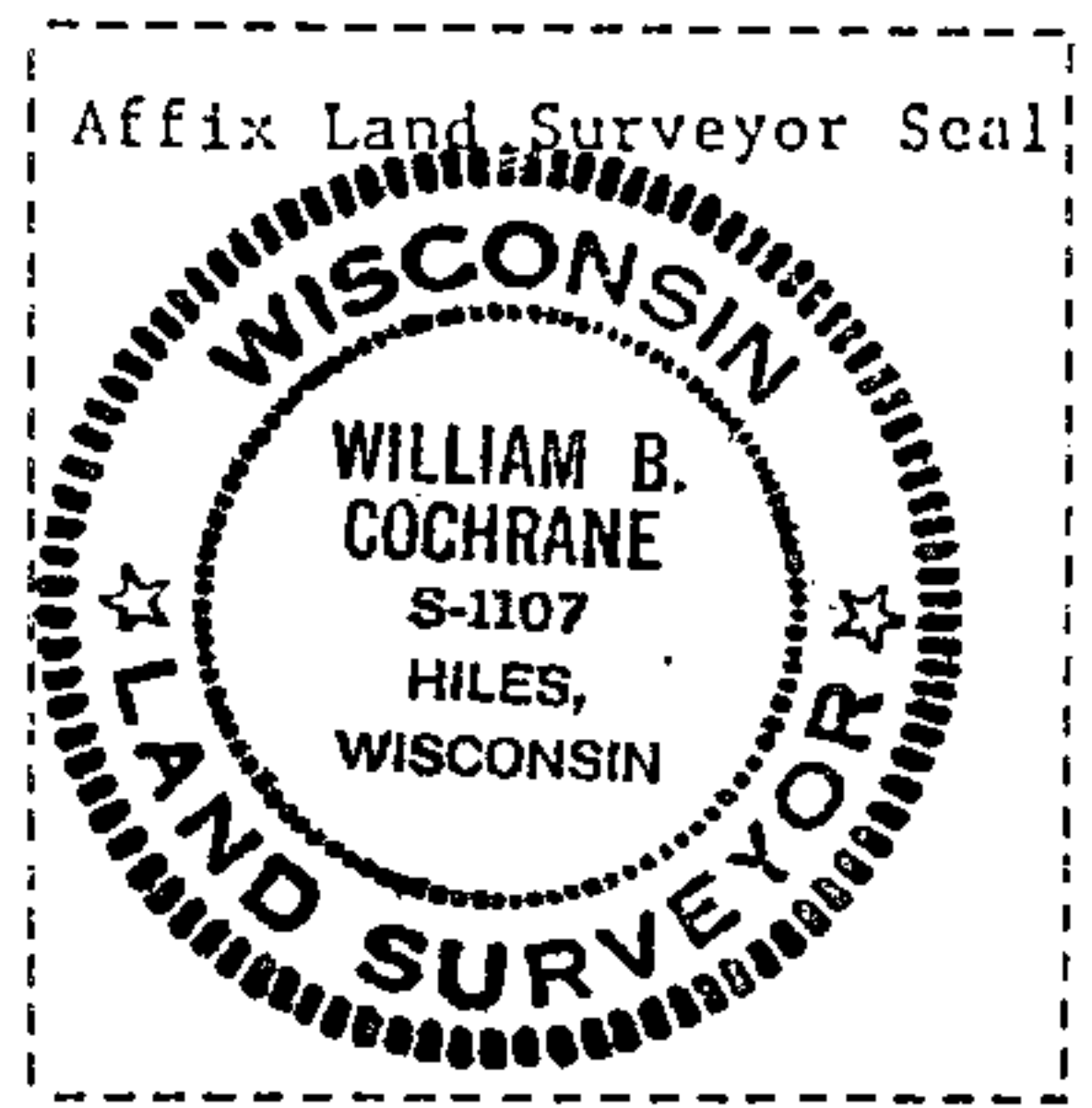
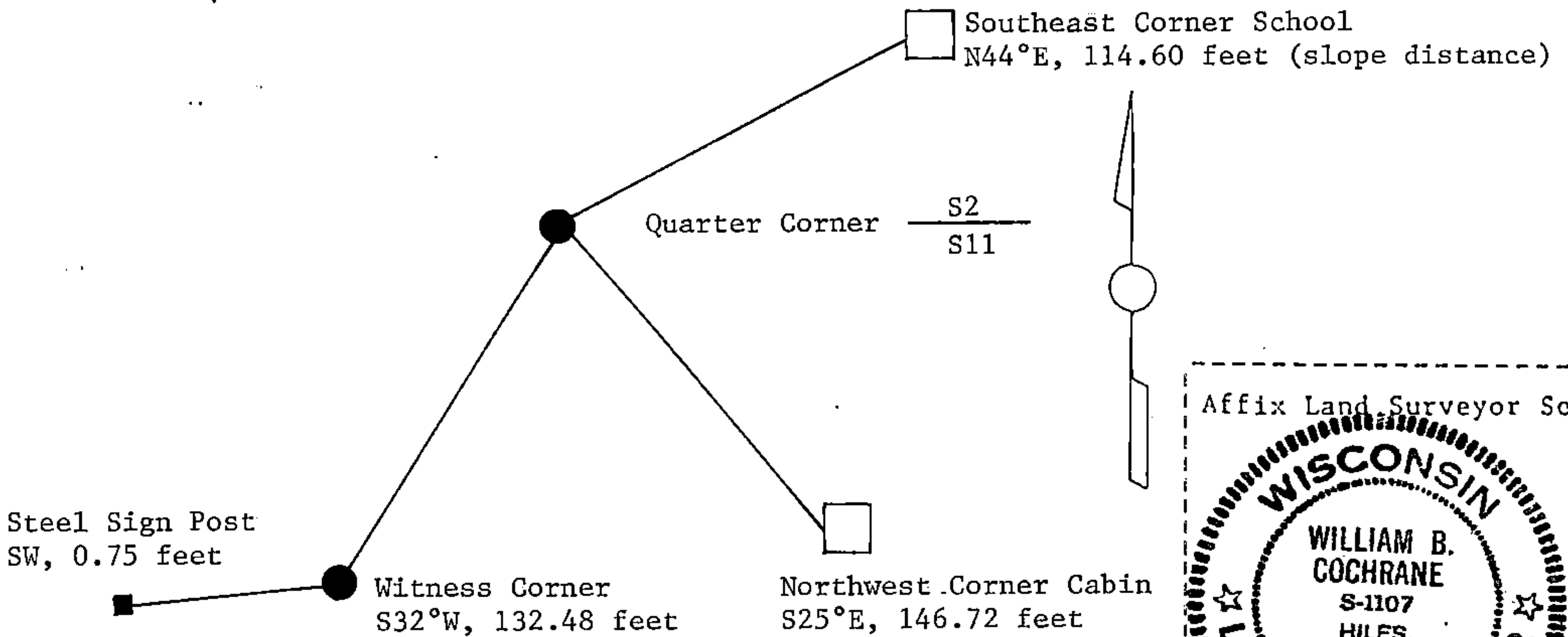
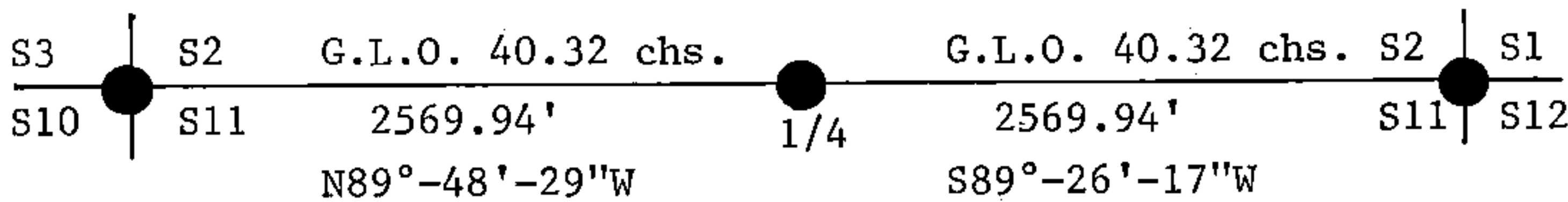
(e) Describe any material discrepancy between the location of the corner as restored or reestablished and the location of that corner as previously restored or reestablished by distance and direction. Show the discrepancy on the plan view drawing under (d), above. Show the distances between the corner as previously restored or reestablished and (1) the corner as restored or reestablished, and (2) to at least 2 of the witness monuments shown on the drawing in (d), above.

See drawing below.

(f) Was the corner restored through acceptance of (1) an obliterated evidence location, or, (2) a found perpetuated location?

Re-established through proportionate methods and accepted evidence.

(g&h) Was the corner reestablished through lost corner proportionate methods? If so, show the method, including the directions and distances to other public land survey corners used as evidence or used for proportioning in determining the corner location?



(i) I, William B. Cochrane  
 (type or print name) certify that the corner location shown on this record was determined by me or under my direction and control and that this U.S. Public Land Survey Monument Record is correct and complete to the best of my knowledge and belief.

William B. Cochrane Signature      October 14, 1986 Date

Certificate ready for filing: [Signature] District Ranger      3-9-87 Date