

**ORIGINAL ON FILE IN CO CLERK'S OFFICE  
COPY HERE FOR REFERENCE**

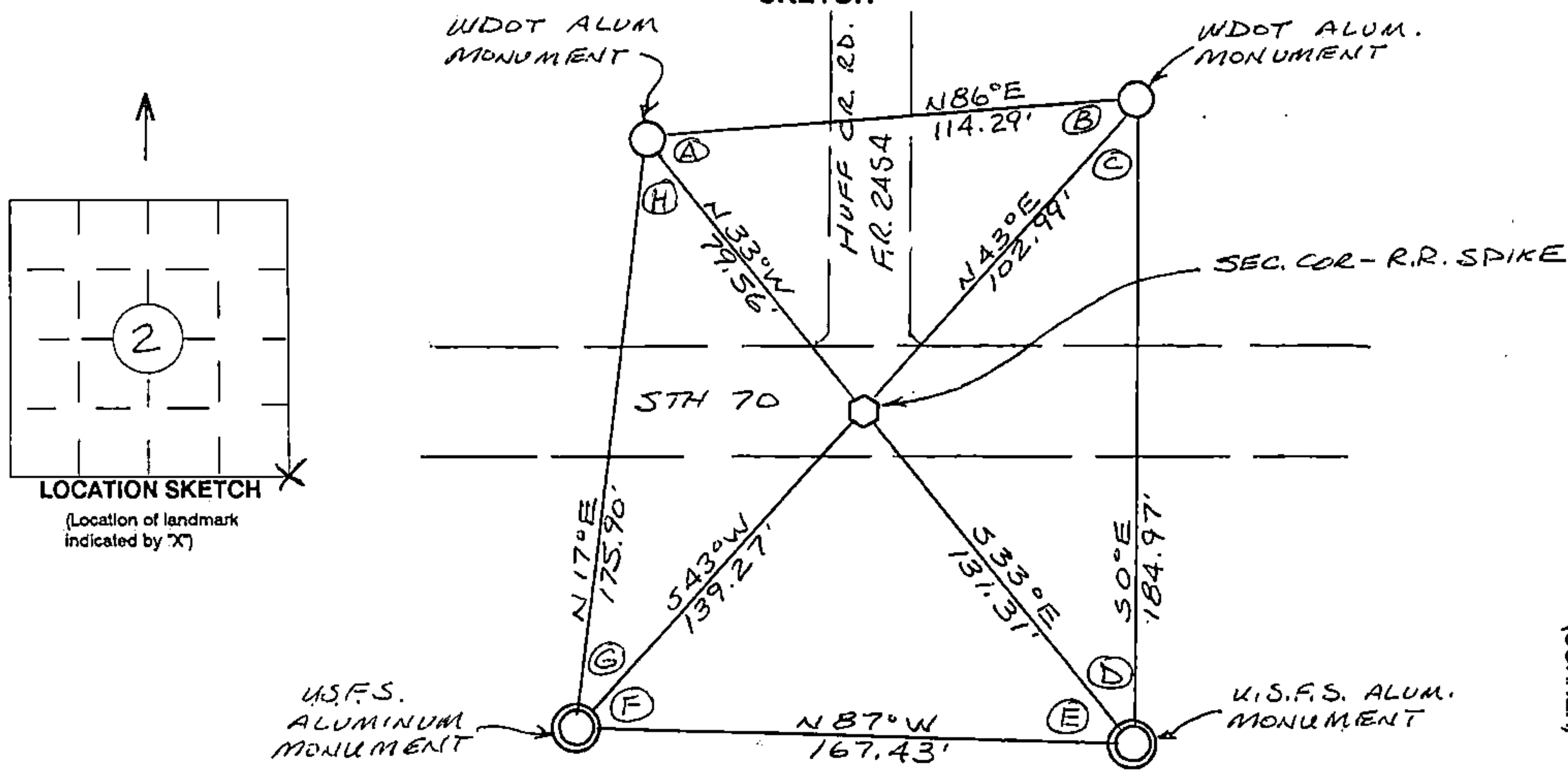
**RECORD AND CERTIFICATION OF U.S. PUBLIC LAND SURVEY CONTROL STATION**

Wisconsin Department of Transportation

ED718 687

District <b>7</b>	Project ID <b>9090-01-00</b>	Located By <b>J.R. WALLIN - SURVEY CREW CHIEF</b>		
Corner <b>S.E. COR. SEC. 2</b>	Township <b>T40N</b>	Range (E,W) <b>R14E</b>	County <b>FOREST</b>	
Wisconsin Coordinates <b>FROM AYRES</b>	East (X) <b>2,331,919.73</b>	North (Y) <b>295,032.47</b>	Elevation (Z)	Zone <b>N</b>
Control Station Name	East (X)	North (Y)	Elevation (Z)	Zone
Horizontal - <b>NORTH AMERICAN, 1927</b>		CONTROL DATUM Vertical - <b>MEAN SEA LEVEL, 1929 ADJUSTMENT</b>		
Horizontal - _____ Order _____		SURVEY CONTROL Vertical - _____ Order _____		

**SKETCH**



I hereby certify that on the date of NOV. 9, 1994 the above corner was located by a marker and/or references established by

WILLIAM B. COCHRANE 5-1107  
(registered land surveyor) (registration no.)

I further certify that to perpetuate the location of said corner, on the date of NOV. 9, 1994 at the exact location thereof, a permanent marker or witness monuments consisting of

TWO WDOT 2 1/2" x 30" BERNTSEN MAG. ALUMINUM MONUMENTS & TWO U.S.F.S. ALUMINUM MONUMENTS were located as shown above.

ANGLE TABLE

A = 61° 04' 08"
B = 42° 32' 22"
C = 43° 37' 43"
D = 32° 45' 48"
E = 53° 56' 44"
F = 49° 39' 46"
G = 26° 04' 45"
H = 50° 18' 46"

**44014020000**

Signature (District Survey Supervisor) COORD.  
Jack P. Wallin

S.E. COR. (CORNER)  
2 (SECTION)  
40N (TOWN)  
14E (RANGE)

U.S. PUBLIC LAND SURVEY MONUMENT RECORD

Index No. E-21

State of Wisconsin }  
County of Forest } ss.

I, William B. Cochran, do hereby certify that on the 29th day of April, 1985, I found evidence of the Southeast Section corner of Section 2 Township 40 North, Range 14 East, Fourth Principal Meridian, as described hereon; and that from this evidence I established a new monument and accessories as described hereon to perpetuate the original location of this corner.

Resident witnesses:

Tony Tillman

History of original corner establishment:

Original Government Survey in 1865 by William E. Daugherty. North between Sections 11 and 12, 80.00 chains, set Section Corner Post to Sections 1, 2, 11 and 12, from which the following bear;

Fir 6" N13°E 59 lks.  
Fir 4" S79°W 183 lks.

Description of corner evidence found:

State-Highway 70 bears East and West and Forest Road bears North.

I accept the intersection of State Highway 70 and Forest Road #2454 as the best available evidence for restoring the corner position.

No original corner evidence was recovered.

Description of monument and accessories I established to perpetuate the original location of this corner.

At the restored corner position, set a railroad spike flush with the surface of State Highway 70. From which the following new blazed and scribed bearing trees bear:

R. Pine 18" N45°E 160.00 feet  
Basswood 9" N33°W 129.00 feet

Witness Corners-(2 1/2"x36" aluminum pipe monuments) bear;

1.) S45°W, 139.35 feet Stamped; Witness Corner, T40N R14E, S1, S2, S11, S12, 1985, S-1107, N45°E, 139.35'

From which a Steel Sign Post bears, SW, 1.00 feet

2.) S33°E, 131.30 feet Stamped; Witness Corner, T40N R14E, S1, S2, S11, S12, 1985, S-1107, N33°W, 131.30'

From which a Steel Sign Post bears, SE, 1.00 feet

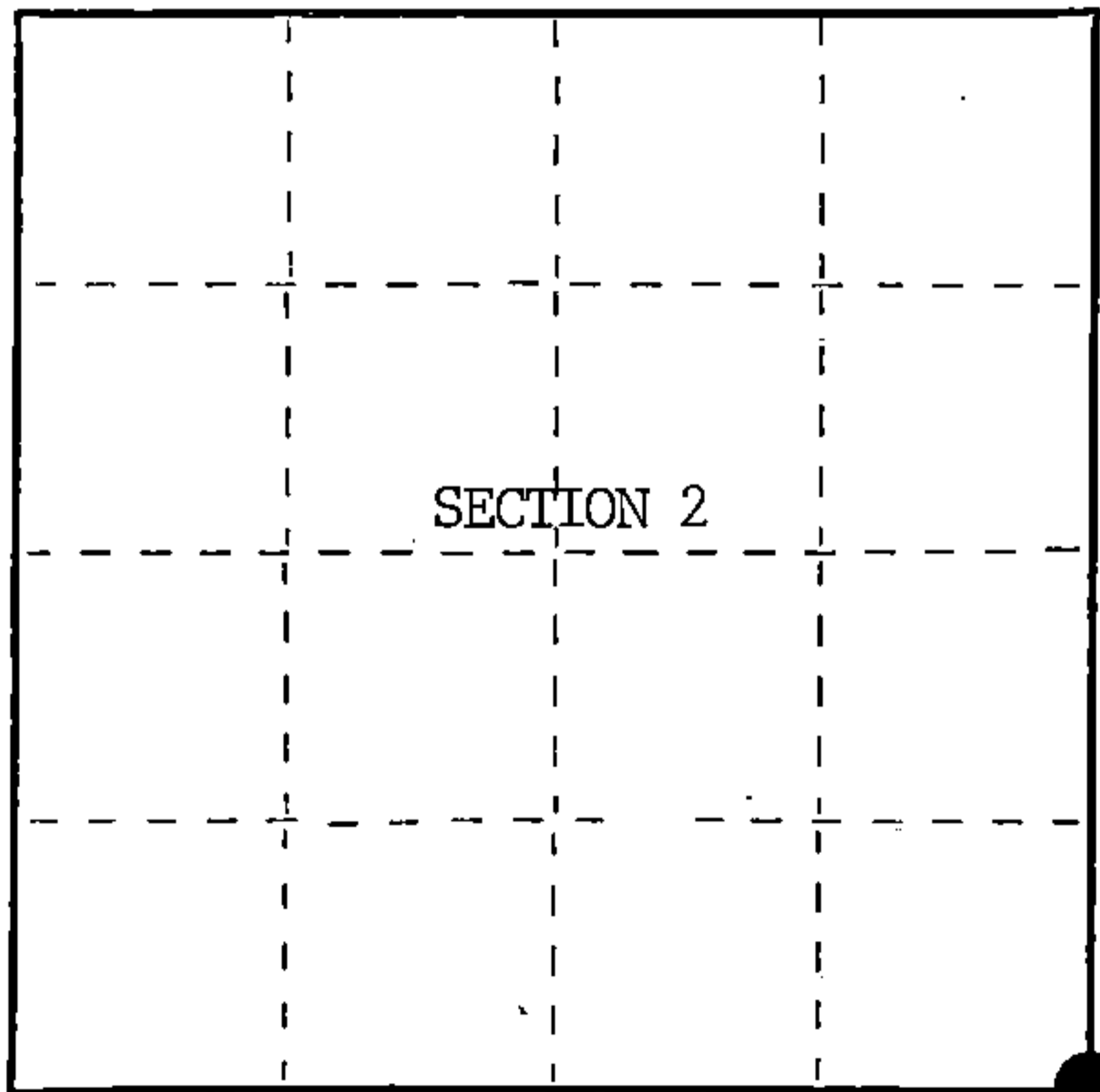
Dated at Hiles, Wis., this 7th day of January, 1986

Signature William B. Cochran Title Land Surveyor Registration No. S-1107  
(County Surveyor, Registered Land Surveyor, or other duly authorized official)

Office of Register of Deeds, County of Forest, I hereby certify that the within instrument was filed in this office for record on the 11th day of March, 1987 at 3:30 P. M.

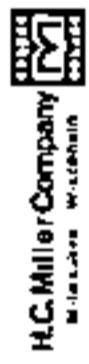
Paul Aschenbrenner  
(Register of Deeds)

By Deputy



○ = Corner monument restored.

FORM NO. 985-A



Stock No. 26273

DOCUMENT NUMBER 132448

44014020000

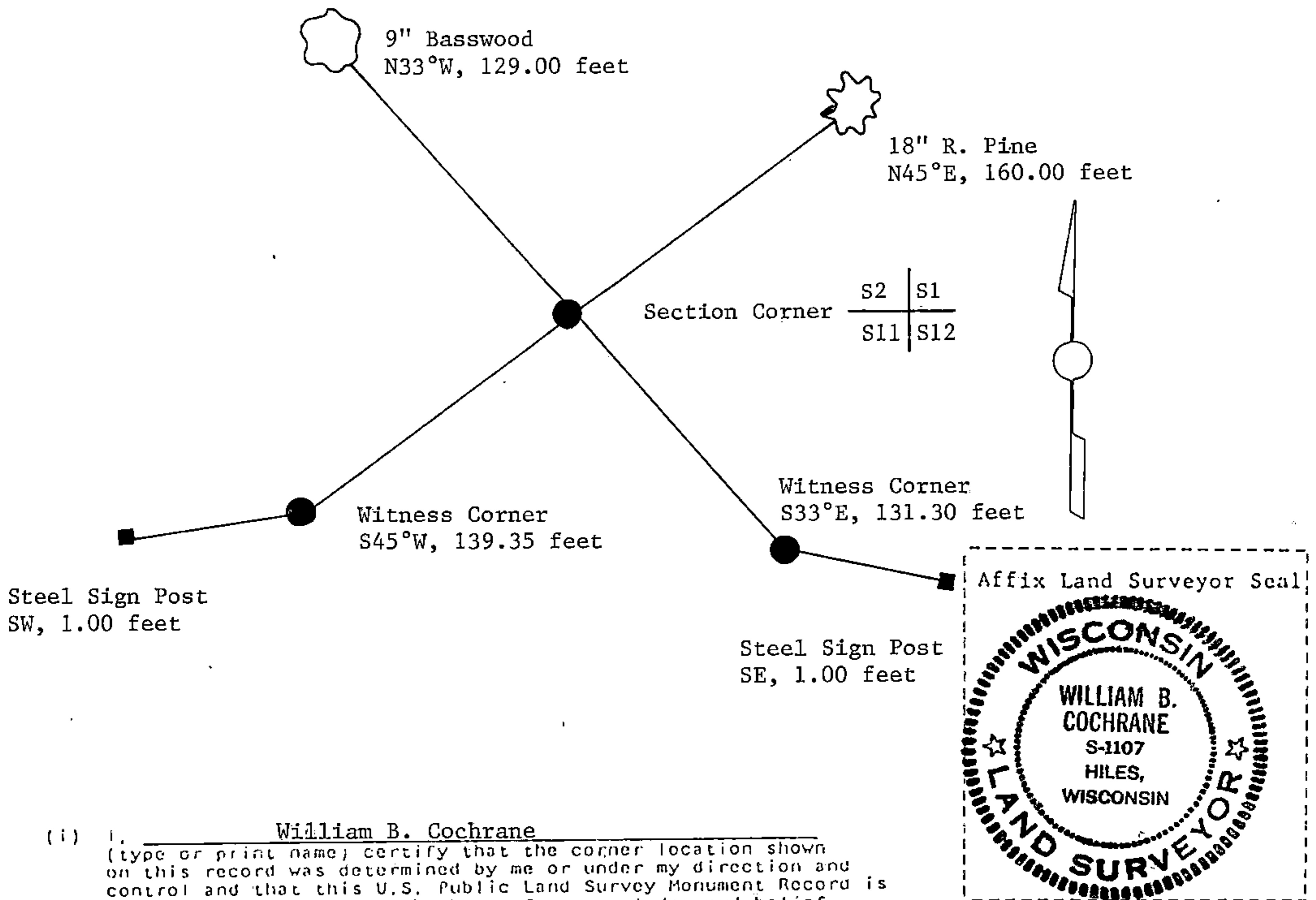
(e) Describe any material discrepancy between the location of the corner as restored or reestablished and the location of that corner as previously restored or reestablished by distance and direction. Show the discrepancy on the plan view drawing under (d), above. Show the distances between the corner as previously restored or reestablished and (1) the corner as restored or reestablished, and (2) to at least 2 of the witness monuments shown on the drawing in (d), above.

See drawing below.

(f) Was the corner restored through acceptance of (1) an obliterated evidence location, or, (2) a found perpetuated location?

Restored from accepted evidence.

(g&h) Was the corner reestablished through lost corner proportionate methods? If so, show the method, including the directions and distances to other public land survey corners used as evidence or used for proportioning in determining the corner location?



(i) I, William B. Cochrane  
 (type or print name) certify that the corner location shown on this record was determined by me or under my direction and control and that this U.S. Public Land Survey Monument Record is correct and complete to the best of my knowledge and belief.

William B. Cochrane      October 14, 1986  
 Signature      Date

Certificate ready for filing: [Signature]      3-9-87  
 District Ranger      Date