

**ORIGINAL ON FILE IN CO CLERK'S OFFICE
COPY HERE FOR REFERENCE**

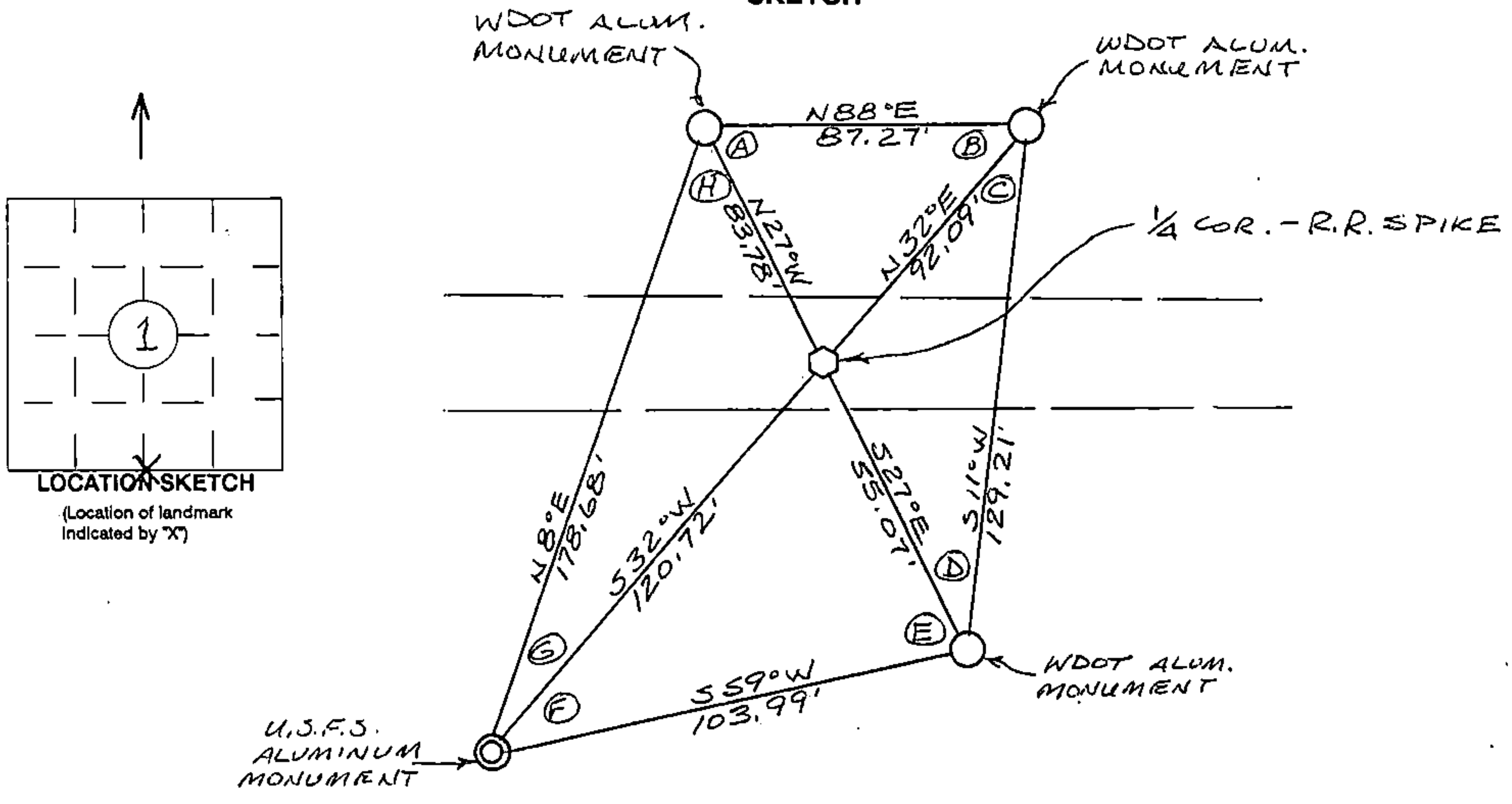
**RECORD AND CERTIFICATION OF U.S.
PUBLIC LAND SURVEY CONTROL STATION**

Wisconsin Department of Transportation

ED718 687

District 7	Project ID 9090-01-00	Located By J.R. WALLIN - SURVEY CREW CHIEF		
Corner 5/4 COR. SEC. 1	Township TAONN	Range (E,W) R 14E	County FOREST	
Wisconsin Coordinates FROM AYRES	East (X) 2,334,488.85	North (Y) 295,077.65	Elevation (Z)	Zone N
Control Station Name	East (X)	North (Y)	Elevation (Z)	Zone
Horizontal - NORTH AMERICAN, 1927		Vertical - MEAN SEA LEVEL, 1929 ADJUSTMENT		
SURVEY CONTROL				
Horizontal - _____ Order _____		Vertical - _____ Order _____		

SKETCH



I hereby certify that on the date of NOV. 10, 1994
the above corner was located by a marker and/or references established by

WILLIAM B. COCHRANE 5-1107
(registered land surveyor) (registration no.)

I further certify that to perpetuate the location of said corner, on the date of
NOV. 10, 1994 at the exact location thereof,
a permanent marker or witness monuments consisting of

THREE WDOT 2 1/2" x 30" MAG. ALUM. MONUMENTS
& ONE U.S.F.S. ALUMINUM MONUMENT
were located as shown above.

ANGLE TABLE

A = 65° 06' 32"
B = 55° 36' 51"
C = 21° 29' 35"
D = 37° 47' 02"
E = 93° 38' 29"
F = 27° 04' 54"
G = 23° 46' 14"
H = 35° 30' 24"

4401A010020

Signature (District Survey Supervisor) COOR D.
Jack R. Wallin

SOUTH 1/4 COR. (CORNER) 7 (SECTION) TAONN (TOWN) 14E (RANGE)

U.S. PUBLIC LAND SURVEY MONUMENT RECORD

Index No. E-23

State of Wisconsin }
County of Forest } ss.

I William B. Cochrane, do hereby certify that on the 30th day of April, 1985, I found evidence of the North Quarter corner of Section 12 Township 40, North, Range 14 East, Fourth Principal Meridian, as described hereon; and that from this evidence I established a new monument and accessories as described hereon to perpetuate the original location of this corner.

Resident witnesses:

Tony Tillman

History of original corner establishment:

Original Government Survey in 1865 by William E. Daugherty. West corrected between Sections 1 and 12, set Quarter Section Corner Post to Sections 1 and 12, from which the following bear;

Birch	10"	S80°E	24 lks.
Hemlock	10"	N45°W	11 lks.

Description of corner evidence found:

The corner position was re-established at proportionate distance between the Northeast and Northwest Section Corners of Section 12, and in the Center Line of State Highway 70.

No original corner evidence was recovered.

Description of monument and accessories I established to perpetuate the original location of this corner.

At the re-established corner position, set a railroad spike flush with the surface of State Highway 70, from which the following new blazed and scribed bearing trees bear;

R. Pine	13"	N32°E	101.49 feet
R. Pine	10"	N22°W	119.61 feet

Witness Corner (2½" x 36" aluminum pipe monument) bears S32°W, 120.79 feet Stamped; Witness Corner, T40N R14E, 1/4, S1, S12, 1985, S-1107, N32°E, 120.79'

Steel Sign Post bears SE, 0.50 feet from Witness Corner.

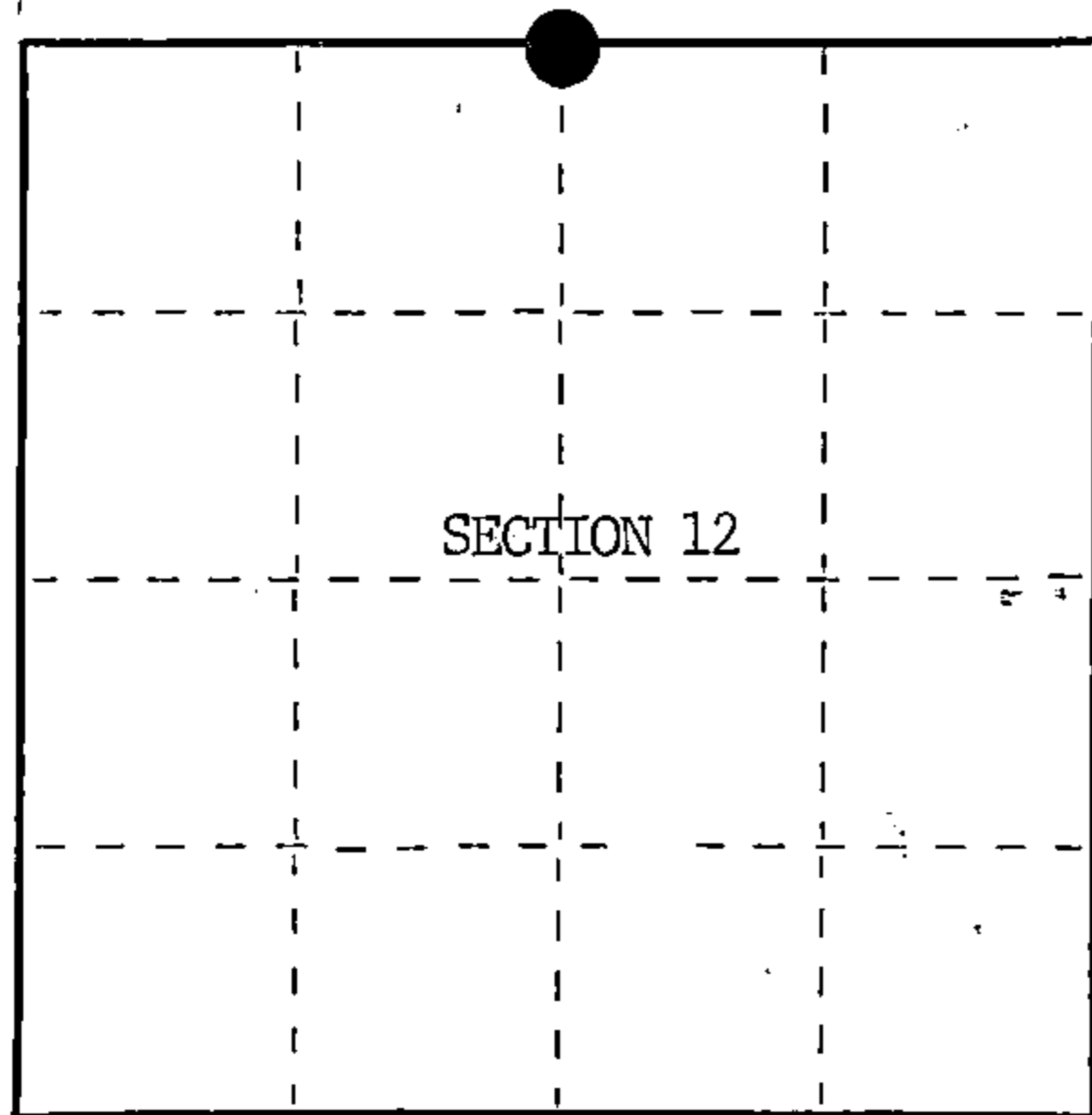
Dated at Hiles, Wis., this 7th day of January, 1986

Signature William B. Cochrane Title Land Surveyor Registration No. S-1107
(County Surveyor, Registered Land Surveyor, or other duly authorized official)

Office of Register of Deeds, County of Forest, I hereby certify that the within instrument was filed in this office for record on the 11th day of March, 1987 at 3:30 o'clock P. M.

Paul Aschenbrenner
(Register of Deeds)

By.....Deputy



○ = Corner monument restored.

FORM NO. 985-A

H.C. Miller Company

Stock No. 26273

DOCUMENT NUMBER 132449

44014010020

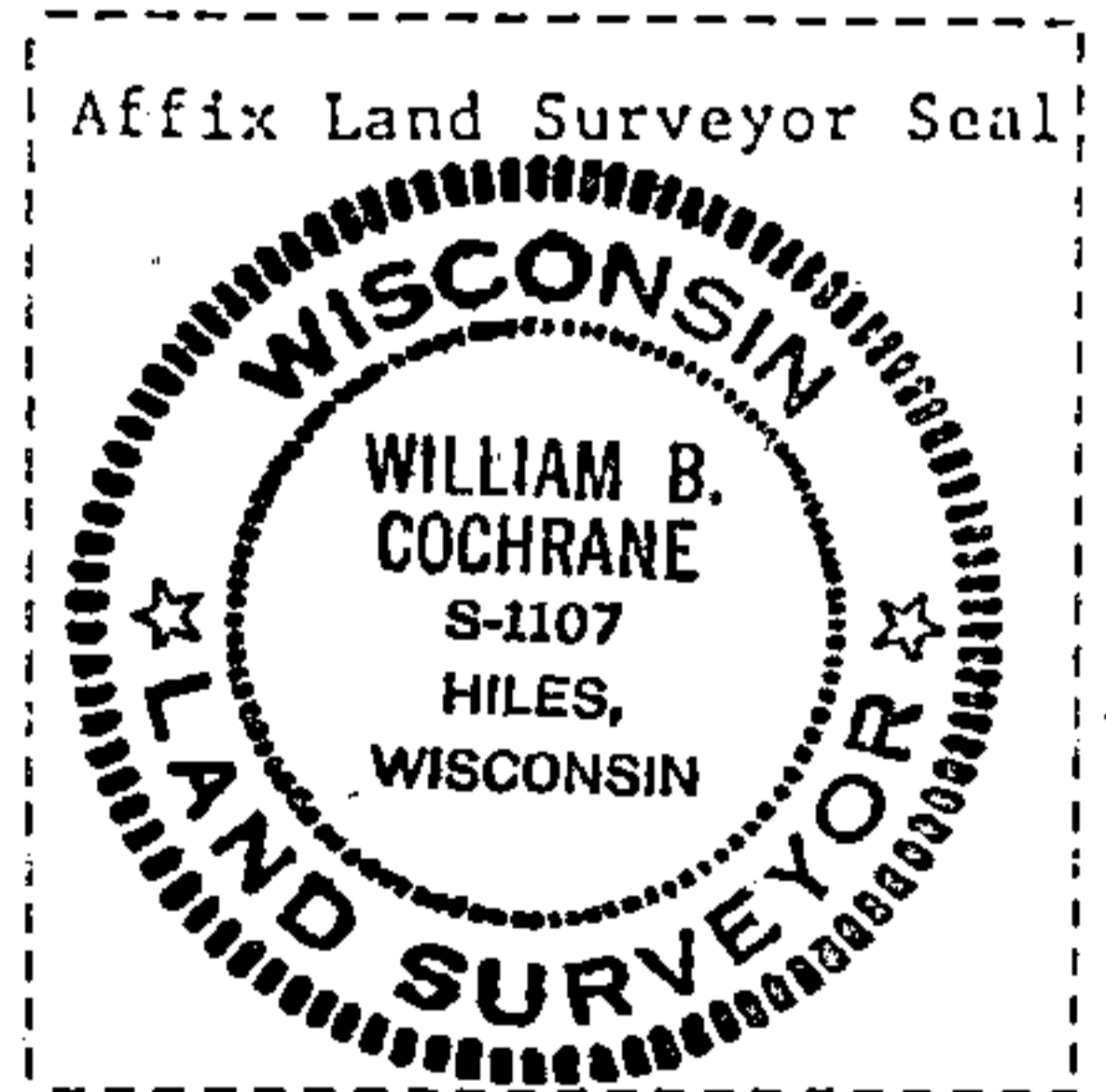
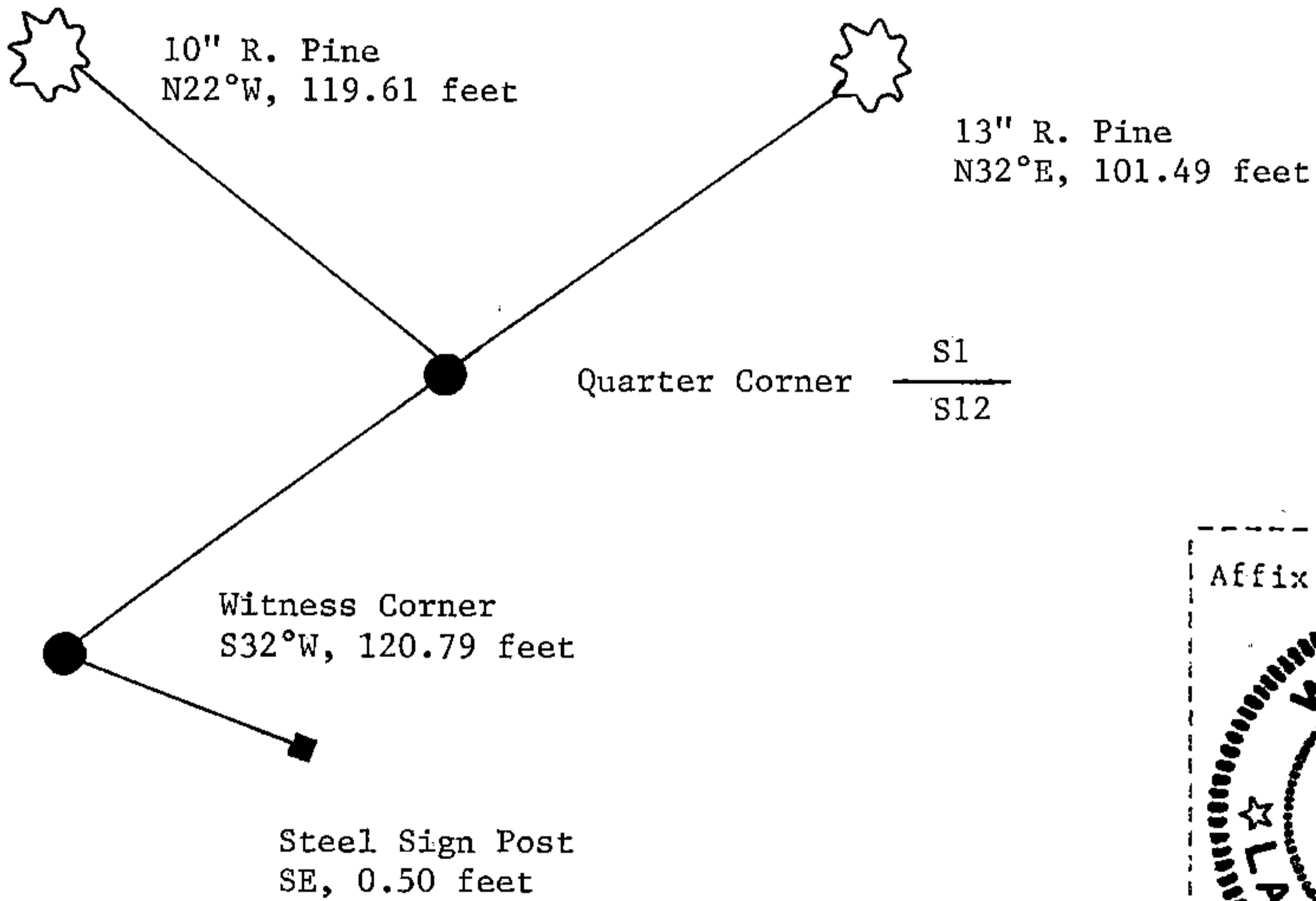
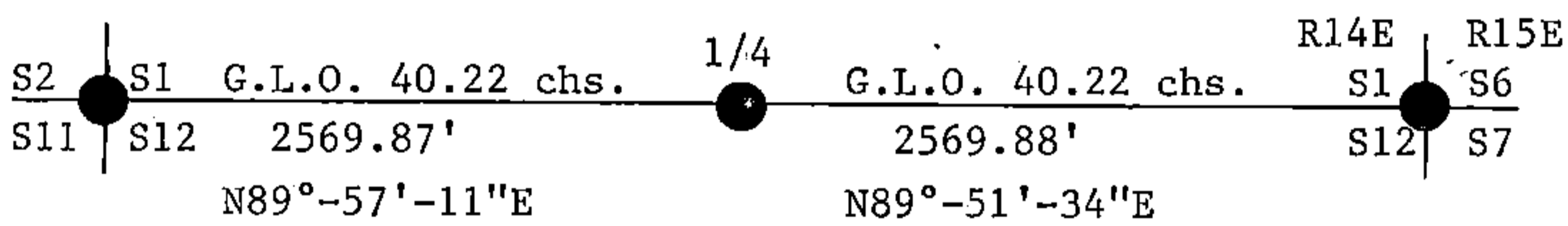
(e) Describe any material discrepancy between the location of the corner as restored or reestablished and the location of that corner as previously restored or reestablished by distance and direction. Show the discrepancy on the plan view drawing under (d), above. Show the distances between the corner as previously restored or reestablished and (1) the corner as restored or reestablished, and (2) to at least 2 of the witness monuments shown on the drawing in (d), above.

See drawing below.

(f) Was the corner restored through acceptance of (1) an obliterated evidence location, or, (2) a found perpetuated location?

(g&h) Was the corner reestablished through lost corner proportionate methods? If so, show the method, including the directions and distances to other public land survey corners used as evidence or used for proportioning in determining the corner location?

Re-established through lost corner proportionate methods and accepted evidence.



(i) I, William B. Cochrane
 (type or print name) certify that the corner location shown on this record was determined by me or under my direction and control and that this U.S. Public Land Survey Monument Record is correct and complete to the best of my knowledge and belief.

William B. Cochrane October 14, 1986
 Signature Date

Certificate ready for filing: [Signature] 3-9-87
 District Ranger Date