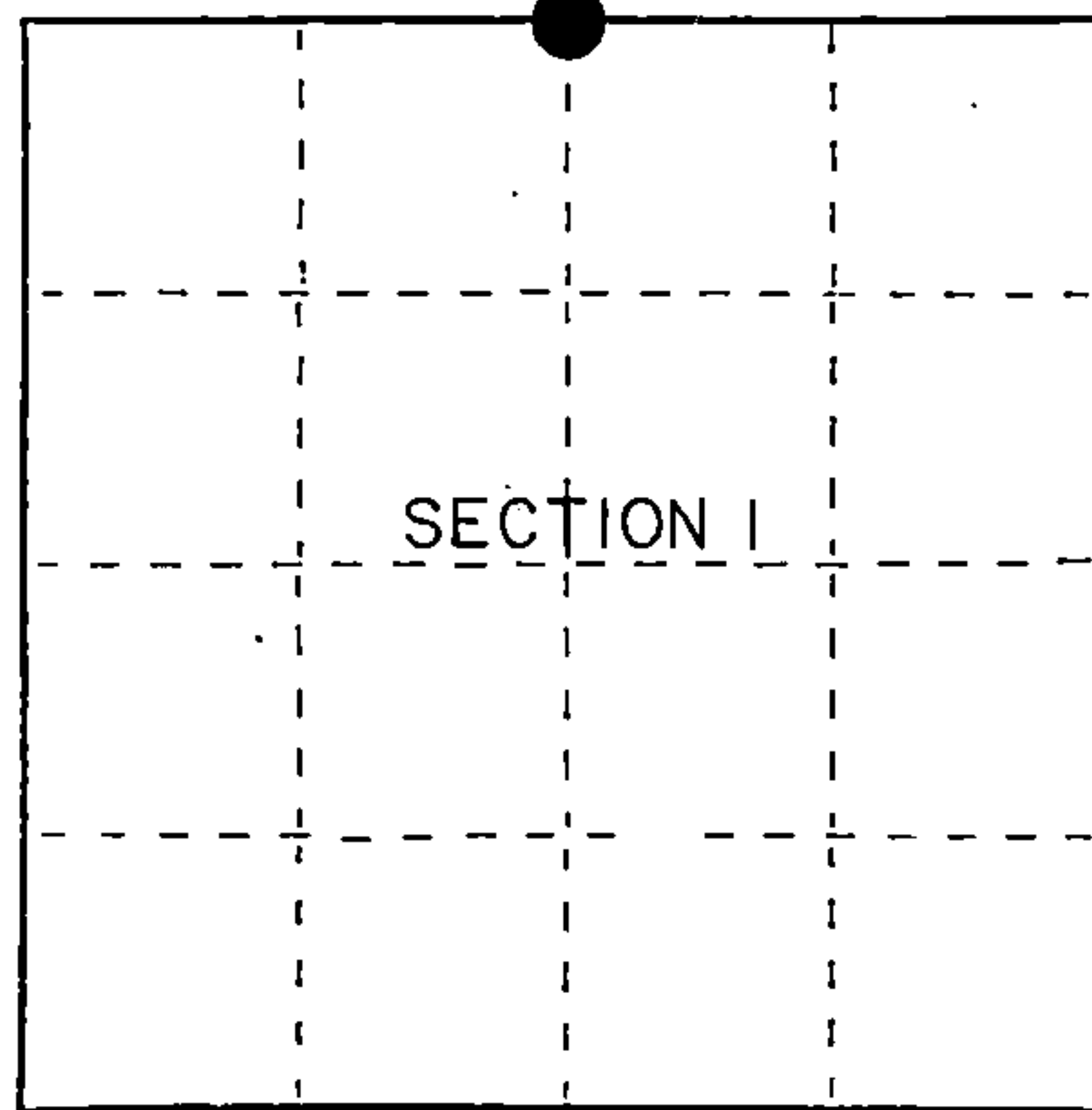


State of Wisconsin }
 County of Forest } ss.

I, Gary L. Pisoni, do hereby certify that on the 19th day of June, 1990, I found evidence of the North Quarter corner of Section 1 Township 39, North, Range 13 East, Fourth Principal Meridian, as described hereon; and that from this evidence I established a new monument and accessories as described hereon to perpetuate the original location of this corner.

Resident witnesses:



● = Corner monument restored.

History of original corner establishment:

Original Government Survey in 1858 by Alfred Millard.

Dependent Resurvey in 1978 by Gary L. Kratz and Michael J. Avery. N 89°43'E, 39.93 chs. East of the Section Corner to Sections 1, 2, 35, and 36, found a 1½" diameter iron pipe 18" above ground. This position is harmoniously related to existing original Corners recovered in this resurvey.

Local Bearing Trees; Cedar, 15", S 89°W, 12 links (With rusted location tag)

New Bearing Trees; Balsam, 4", N 20°E, 18 links, Cedar, 7", S 73°W, 17 links

Not remonumented.

Description of corner evidence found:

Found 3.3' long iron pipe as described above, from which the following bear;

Balsam	7"	N 24°E	11.88 feet (13.81 feet)
Cedar	7"	S 77°W	11.22 feet (9.92 feet)
Cedar (W/Tag)	17"	S 89°W	7.92 feet (6.00 feet)

Distances in parenthesis are my measurements taken to a nail in side of tree.

Description of monument and accessories I established to perpetuate the original location of this corner.

In Place of iron pipe, set a 2½ inch diameter aluminum pipe monument, 3 feet long, 3 inches above the ground surface, with an aluminum cap stamped; T40N, R13E, 1/4, S36, S1, T39N, 1990, S-1634. From which the following new blazed and scribed bearing trees bear; (all measurements taken to a nail in side of tree)

Red Maple	10"	N 62°E	22.89 feet
Black Spruce	7"	S 21°W	31.68 feet
Cedar	17"	N 17°W	25.03 feet
Steel Sign Post		S 40°E	0.82 feet

Dated at Iron River, MI, this 20th day of August, 1990

Signature Gary L. Pisoni Title Land Surveyor Registration No. S-1634

(County Surveyor, Registered Land Surveyor, or other duly authorized official)

Office of Register of Deeds, County of Forest, I hereby certify that the within instrument was filed in this office for record on the 04th day of March, 1993 at 10:45 o'clock A. M.

Paul Aschenbrenner
 (Register of Deeds)

By _____ Deputy

FORM NO. 935-A

W.C. Murray Company

Stock No. 26273

146897

44013360020

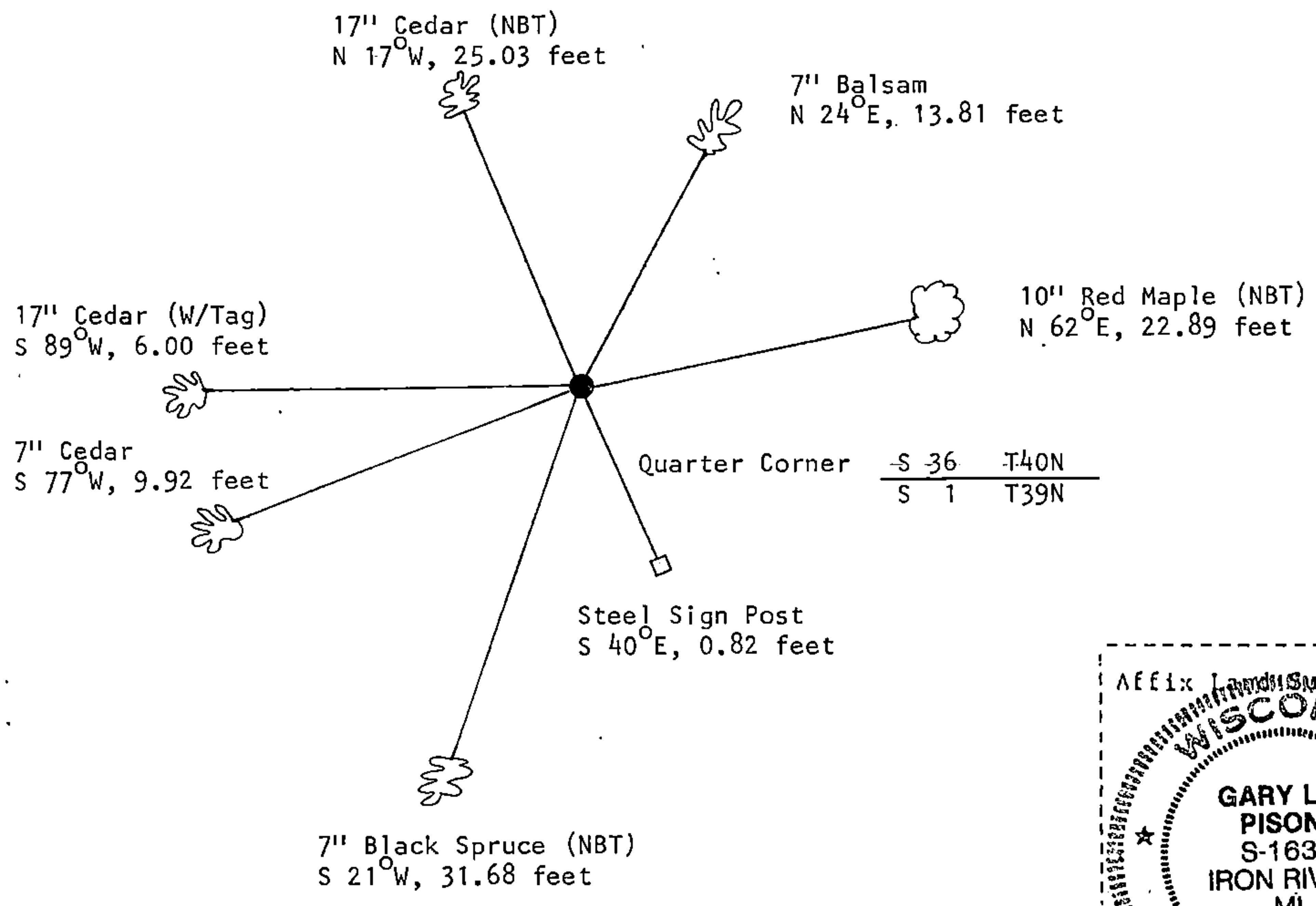
e) Describe any material discrepancy between the location of the corner as restored or reestablished and the location of that corner as previously restored or reestablished by distance and direction. Show the discrepancy on the plan view drawing under (d), above. Show the distances between the corner as previously restored or reestablished and (1) the corner as restored or reestablished, and (2) to at least 2 of the witness monuments shown on the drawing in (d), above.

See drawing below.

(f) Was the corner restored through acceptance of (1) an obliterated evidence location, or, (2) a found perpetuated location?

Restored through acceptance of a found perpetuated location.

(g&h) Was the corner reestablished through lost corner proportionate methods? If so, show the method, including the directions and distances to other public land survey corners used as evidence or used for proportioning in determining the corner location?



(i) I, Gary L. Pisoni
 (type or print name) certify that the corner location shown on this record was determined by me or under my direction and control and that this U.S. Public Land Survey Monument Record is correct and complete to the best of my knowledge and belief.

Signature Gary L. Pisoni Date 11/21/91

Survey requested by; APV Carr District Ranger Date 10/2/92