

U.S. PUBLIC LAND SURVEY MONUMENT RECORD

Index No. Z-1

State of Wisconsin }
County of Forest } ss.

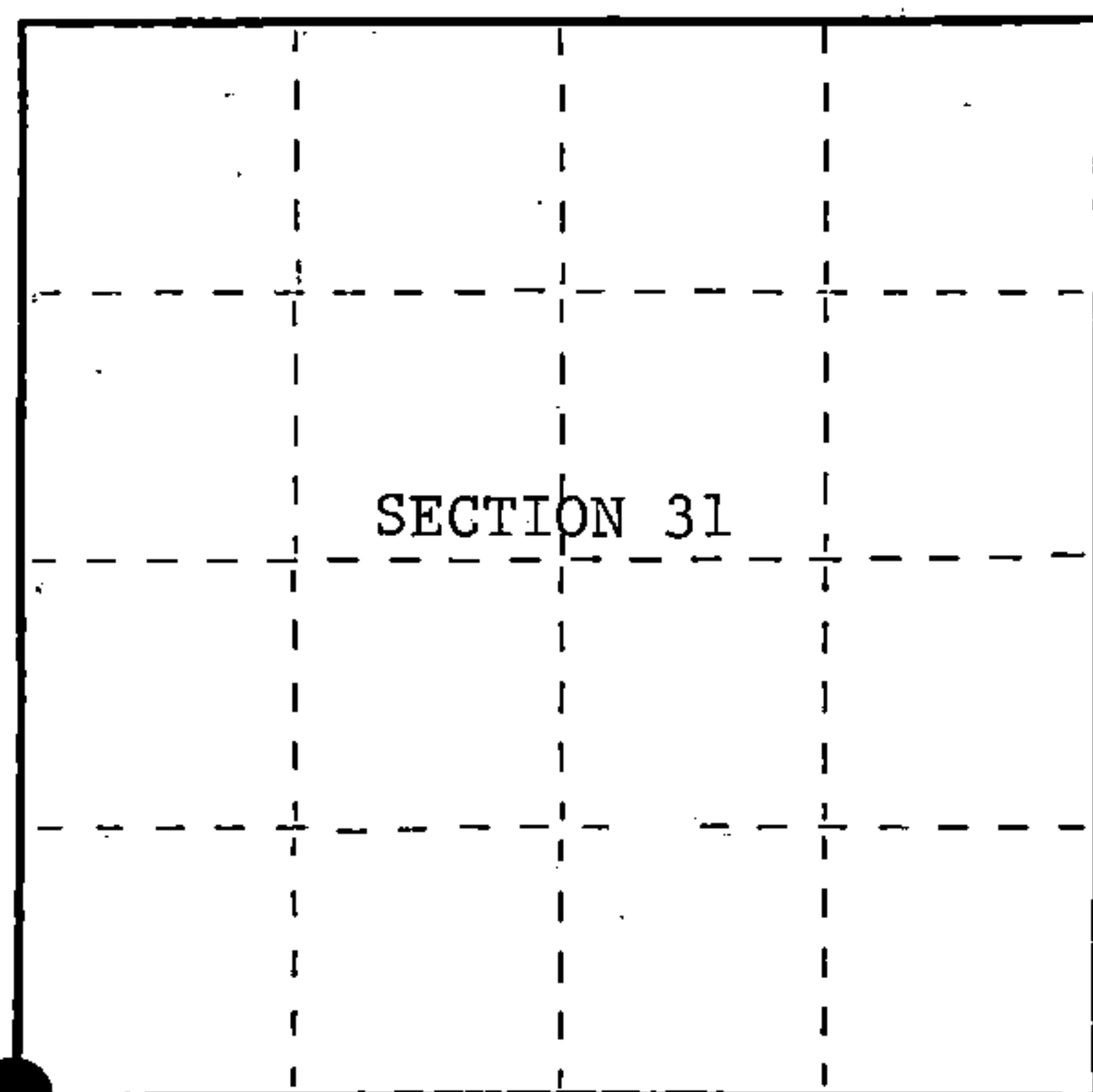
I William B. Cochrane, do hereby certify that on the 10th day of July, 1985, I found evidence of the Southwest Section corner of Section 31 Township 40 North, Range 14 East, Fourth Principal Meridian, as described hereon; and that from this evidence I established a new monument and accessories as described hereon to perpetuate the original location of this corner.

Resident witnesses:

Tony Tillman

David Brownell

State Plane Co-ordinates
N- 268,235.0080
E-2,305,625.7740



○ = Corner monument restored.

History of original corner establishment:

Original Government Survey in 1858 by Artemas Curtis.

Corner restored on July 10th, 1975, by William B. Cochrane, a Registered Land Surveyor with the U.S. Forest Service.

See Certified Land Corner Restoration Certificate #108556, filed in the Registrar of Deeds Office in the Forest County Courthouse.

Description of corner evidence found:

Found monument as described and in place, from which the following bear;

Balsam	13"	S54°E	71.08 feet
Balsam	12"	S 3°W	95.81 feet
Steel Sign Post		SE	.0.50 feet

Description of monument and accessories I established to perpetuate the original location of this corner.

Re-set Steel Sign Post NW 2.00 feet

Dated at Hiles, Wis., this 10th day of February, 1987.

Signature *William B. Cochrane* Title Land Surveyor Registration No. S-1107
(County Surveyor, Registered Land Surveyor, or other duly authorized official)

Office of Register of Deeds, County of Forest, I hereby certify that the within instrument was filed in this office for record on the 11th day of March, 1987 at 3:30 o'clock P. M.

Paul Aschenbrenner
(Register of Deeds)

By _____ Deputy

FORM NO. 985-A

H.C. Miller Company

Stock No. 26273

DOCUMENT NUMBER 132455

44013360000

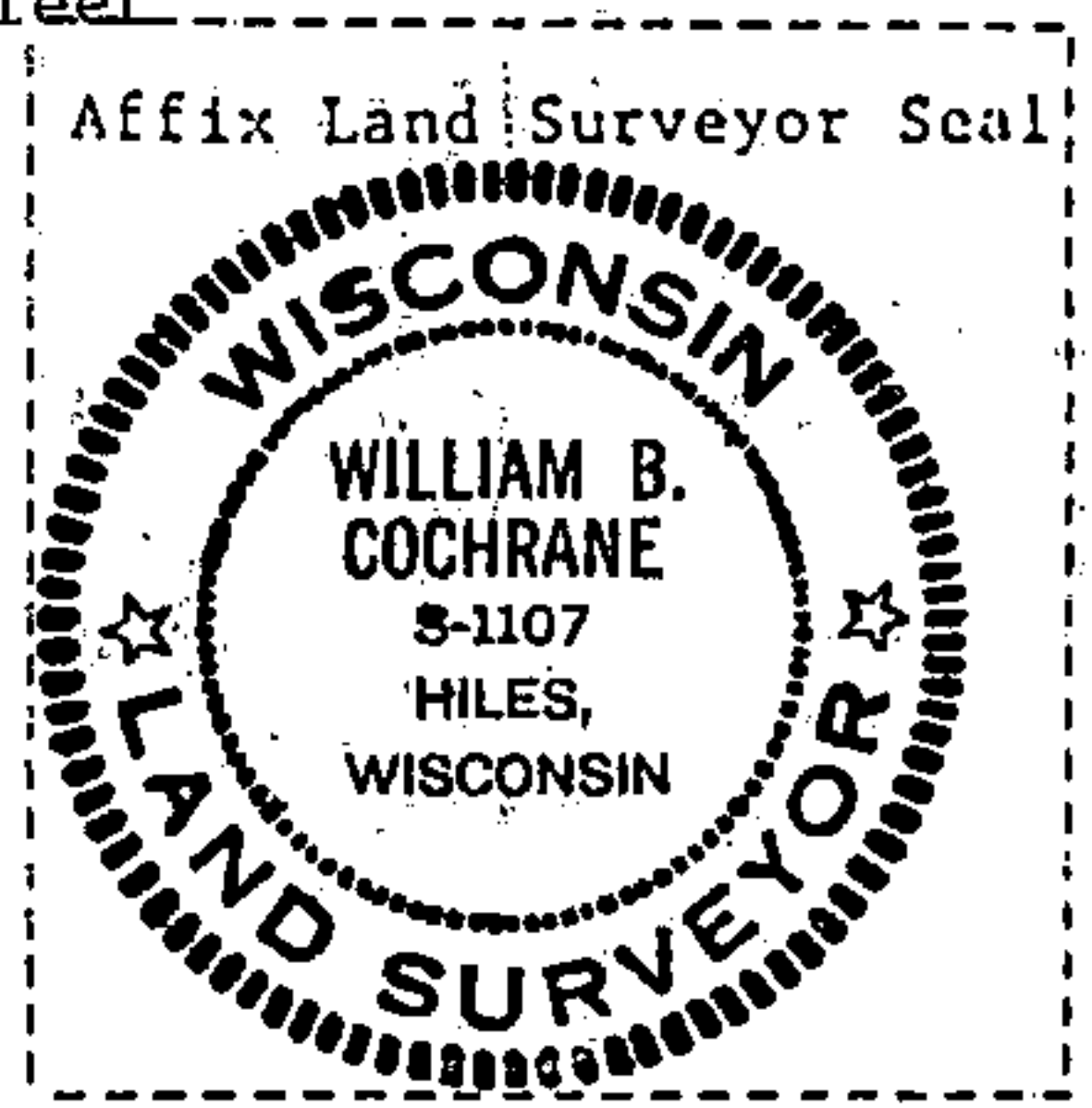
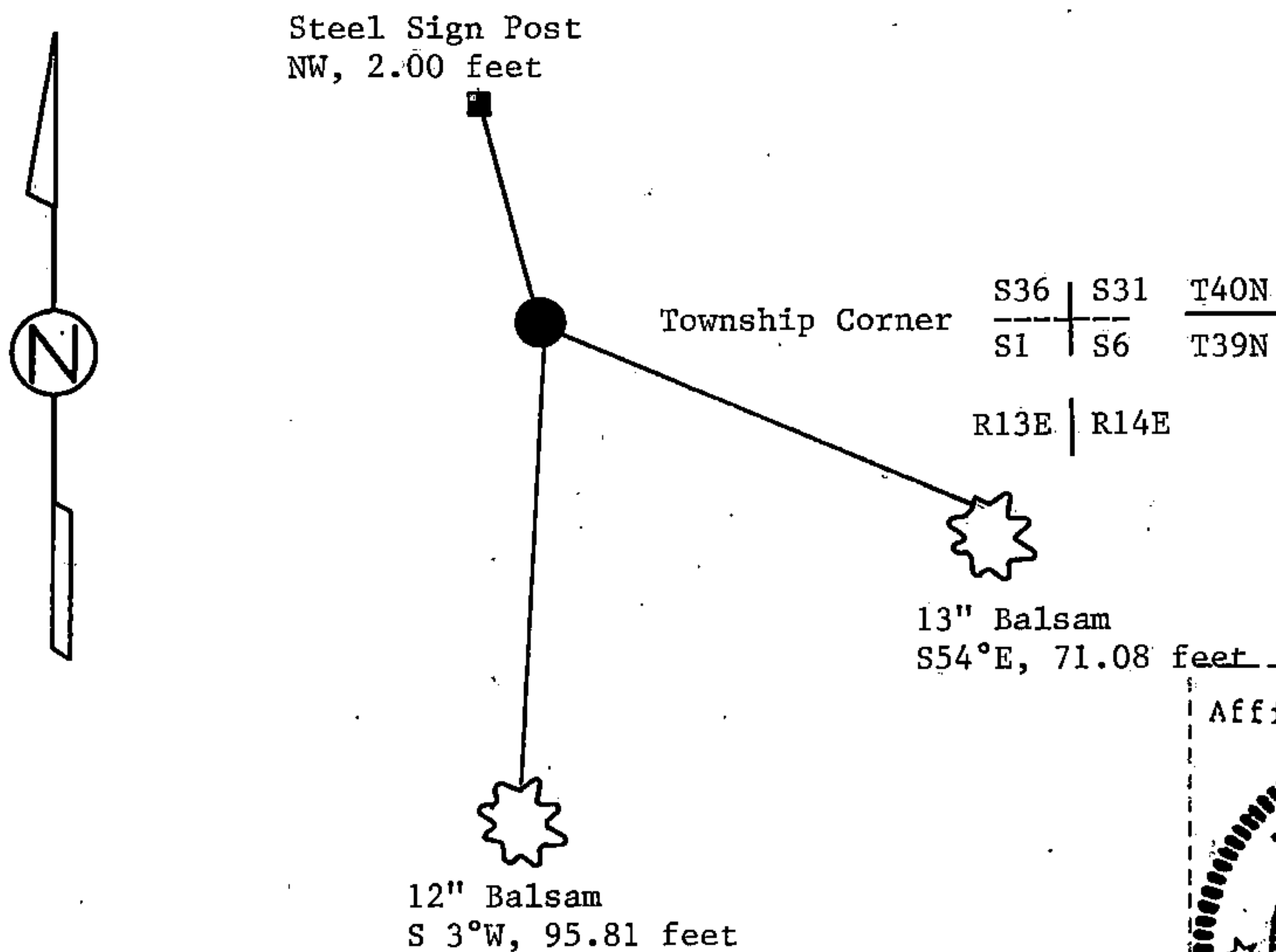
(e) Describe any material discrepancy between the location of the corner as restored or reestablished and the location of that corner as previously restored or reestablished by distance and direction. Show the discrepancy on the plan view drawing under (d), above. Show the distances between the corner as previously restored or reestablished and (1) the corner as restored or reestablished, and (2) to at least 2 of the witness monuments shown on the drawing in (d), above.

See drawing below.

(f) Was the corner restored through acceptance of (1) an obliterated evidence location, or, (2) a found perpetuated location?

Restored through acceptance of a found perpetuated location.

(g&h) Was the corner reestablished through lost corner proportionate methods? If so, show the method, including the directions and distances to other public land survey corners used as evidence or used for proportioning in determining the corner location?



(i) I, William B. Cochrane
(type or print name) certify that the corner location shown on this record was determined by me or under my direction and control and that this U.S. Public Land Survey Monument Record is correct and complete to the best of my knowledge and belief.

William B. Cochrane February 10, 1987
Signature Date

Survey requested by: [Signature] 3-9-87
District Ranger Date

U.S. PUBLIC LAND SURVEY MONUMENT RECORD

Index No. A-25

State of Wisconsin }
County of Forest } ss.

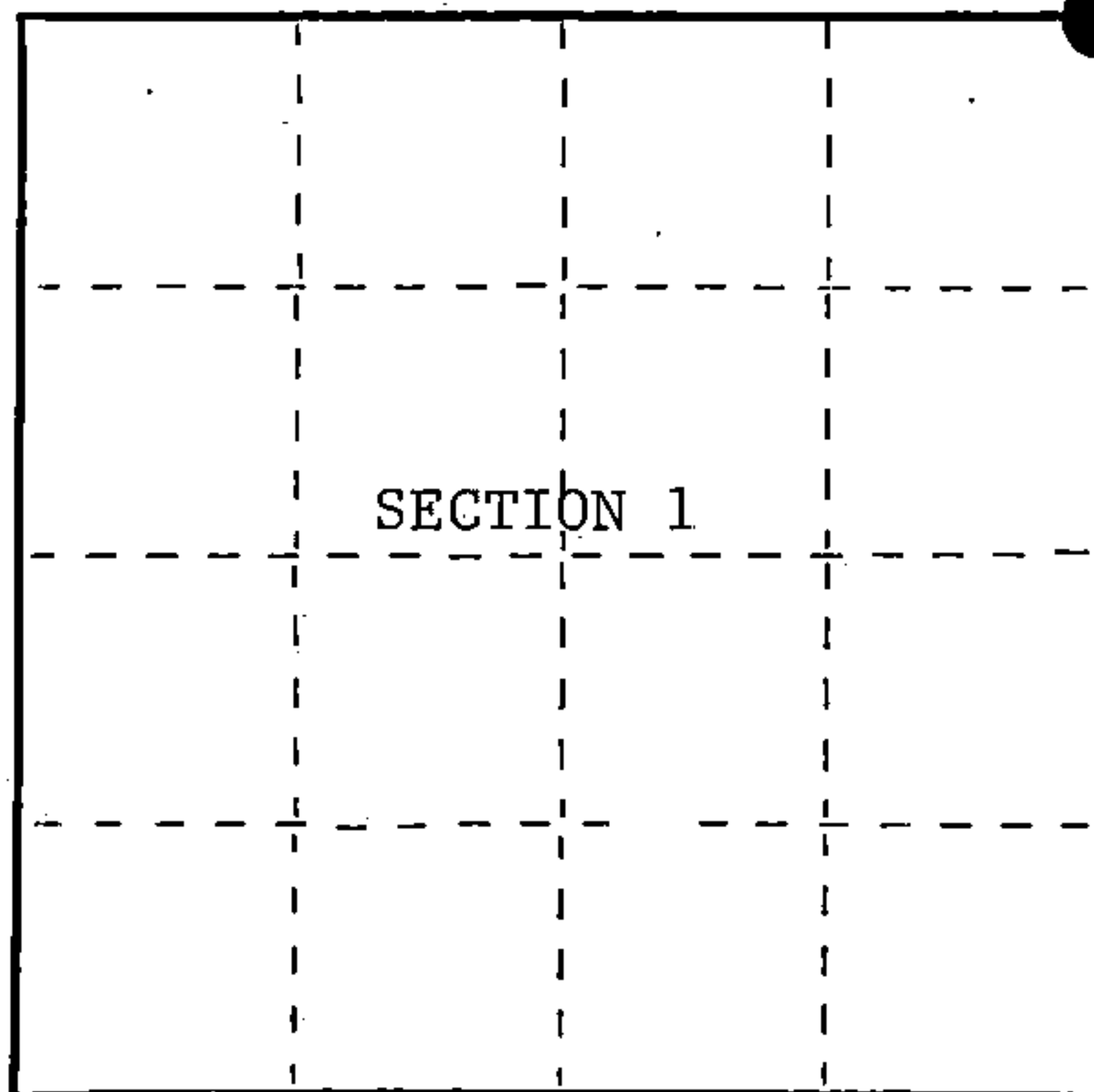
I, William B. Cochrane, do hereby certify that on the 10th day of July, 1985, I found evidence of the Northeast Section corner of Section 1 Township 39 North, Range 13 East, Fourth Principal Meridian, as described hereon; and that from this evidence I established a new monument and accessories as described hereon to perpetuate the original location of this corner.

Resident witnesses:

David Brownell

Tony Tillman

State Plane Co-ordinates
N- 268,235.0080
E-2,305,625.7740



○ = Corner monument restored.

History of original corner establishment:

Original Government Survey in 1858 by Artemas Curtis.

Corner restored on July 10th, 1975, by William B. Cochrane, a Registered Land Surveyor with the U.S. Forest Service.

See Certified Land Corner Restoration Certificate #108556, filed in the Registrar of Deeds Office in the Forest County Courthouse.

Description of corner evidence found:

Found monument as described and in place, from which the following bear;

Balsam	13"	S54°E	71.08 feet
Balsam	12"	S 3°W	95.81 feet
Steel Sign Post		SE	0.50 feet

Description of monument and accessories I established to perpetuate the original location of this corner.

Re-set Steel Sign Post NW 2.00 feet

Dated at Hiles, Wis., this 10th day of February, 1987

Signature *William B. Cochrane* Title Land Surveyor Registration No. S-1107
(County Surveyor, Registered Land Surveyor, or other duly authorized official)

Office of Register of Deeds, County of Forest, I hereby certify that the within instrument was filed in this office for record on the 11th day of March, 1987 at 3:30 o'clock P. M.

Paul Achenbacher
(Register of Deeds)

By _____ Deputy

FORM NO. 985-A

H.C. Miller Company

Stock No. 26273

DOCUMENT NUMBER 132298

144013360000

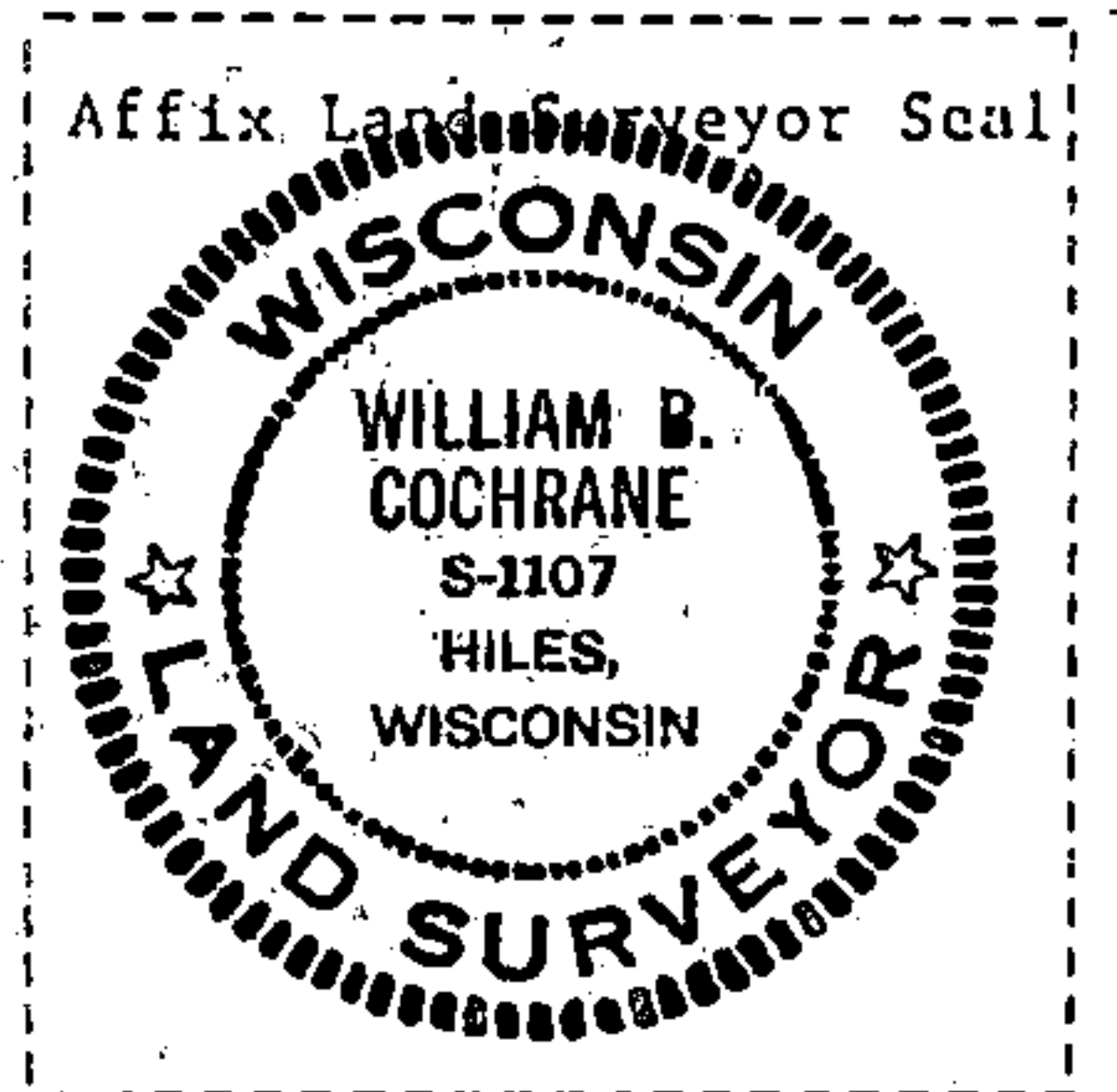
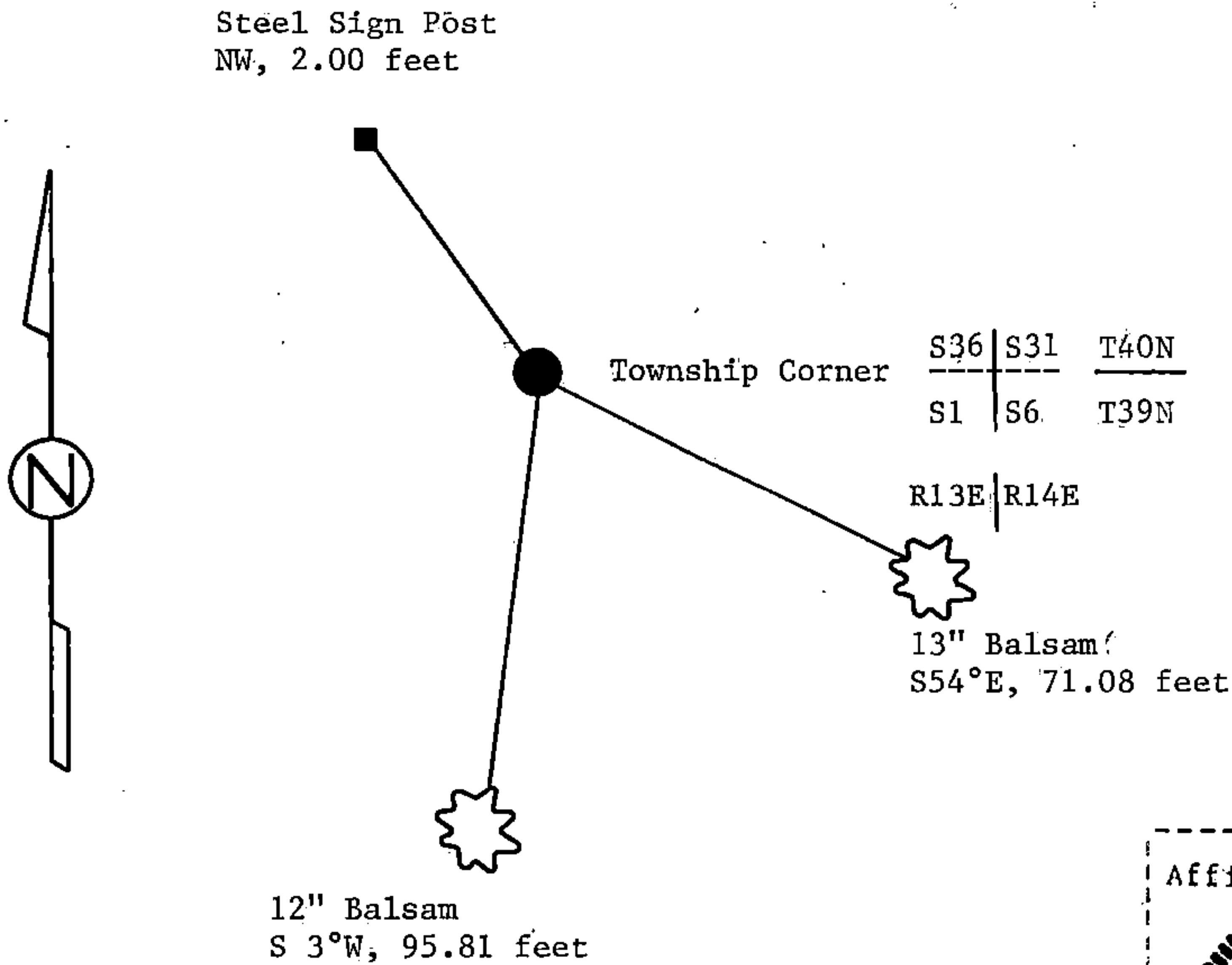
(e) Describe any material discrepancy between the location of the corner as restored or reestablished and the location of that corner as previously restored or reestablished by distance and direction. Show the discrepancy on the plan view drawing under (d), above. Show the distances between the corner as previously restored or reestablished and (1) the corner as restored or reestablished, and (2) to at least 2 of the witness monuments shown on the drawing in (d), above.

See drawing below.

(f) Was the corner restored through acceptance of (1) an obliterated evidence location, or, (2) a found perpetuated location?

Restored through acceptance of a found perpetuated location.

(g&h) Was the corner reestablished through lost corner proportionate methods? If so, show the method, including the directions and distances to other public land survey corners used as evidence or used for proportioning in determining the corner location?



(i) William B. Cochrane
(type or print name) certify that the corner location shown on this record was determined by me or under my direction and control and that this U.S. Public Land Survey Monument Record is correct and complete to the best of my knowledge and belief.

William B. Cochrane February 10, 1987
Signature Date

Survey requested by: Edward Anger 3-9-87
District Ranger Date

U.S. PUBLIC LAND SURVEY MONUMENT RECORD

Index No. Z-25

State of Wisconsin }
County of Forest } ss.

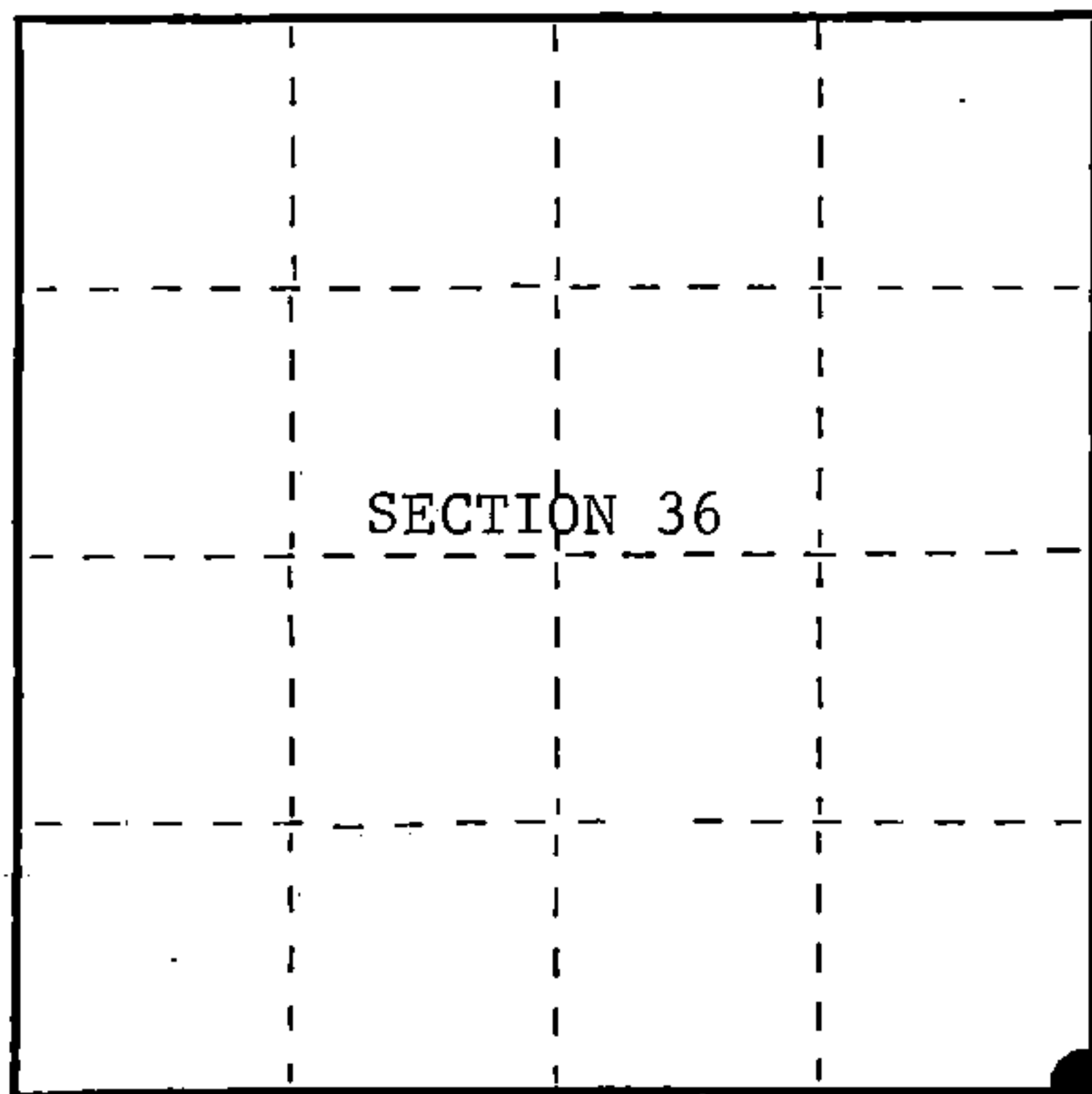
I, William B. Cochrane, do hereby certify that on the 10th day of July, 1985, I found evidence of the Southeast Section corner of Section 36 Township 40 North, Range 13 East, Fourth Principal Meridian, as described hereon; and that from this evidence I established a new monument and accessories as described hereon to perpetuate the original location of this corner.

Resident witnesses:

David Brownell

Tony Tillman

State Plane Co-ordinates
N- 268,235.0080
E-2,305,625.7740



○ = Corner monument restored.

History of original corner establishment:

Original Government Survey in 1858 by Artemas Curtis.

Corner restored on July 10th, 1975, by William B. Cochrane, a Registered Land Surveyor with the U.S. Forest Service.

See Certified Land Corner Restoration Certificate #108556, filed in the Registrar of Deeds Office in the Forest County Courthouse.

Description of corner evidence found:

Found monument as described and in place, from which the following bear;

Balsam	13"	S54°E	71.08 feet
Balsam	12"	S 3°W	95.81 feet
Steel Sign Post		SE	0.50 feet

Description of monument and accessories I established to perpetuate the original location of this corner.

Re-set Steel Sign Post NW 2.00 feet

Dated at Hiles, Wis., this 10th day of February, 1987

Signature: William B. Cochrane Title: Land Surveyor Registration No. S-1107
(County Surveyor, Registered Land Surveyor, or other duly authorized official)

Office of Register of Deeds, County of Forest, I hereby certify that the within instrument was filed in this office for record on the 11th day of March, 1987 at 3:30 o'clock P.M.

Paul Schenckner
(Register of Deeds)

By Deputy

FORM NO. 985-A

H.C. Miller Company

Stock No. 26273

DOCUMENT NUMBER 132423

44013360000

CERTIFIED LAND CORNER RESTORATION

State of Wisconsin }
County of Forest } ss.

I William B. Cochrane, do hereby certify that on the 10th day of July, 1973, I found evidence of the Northwest corner of Section 6, Township 39 North, Range 14 East, Fourth Principal Meridian, as described hereon; and that from this evidence I established a new monument and accessories as described hereon to perpetuate the original location of this corner:

Description of original monument and accessories and subsequent restorations:

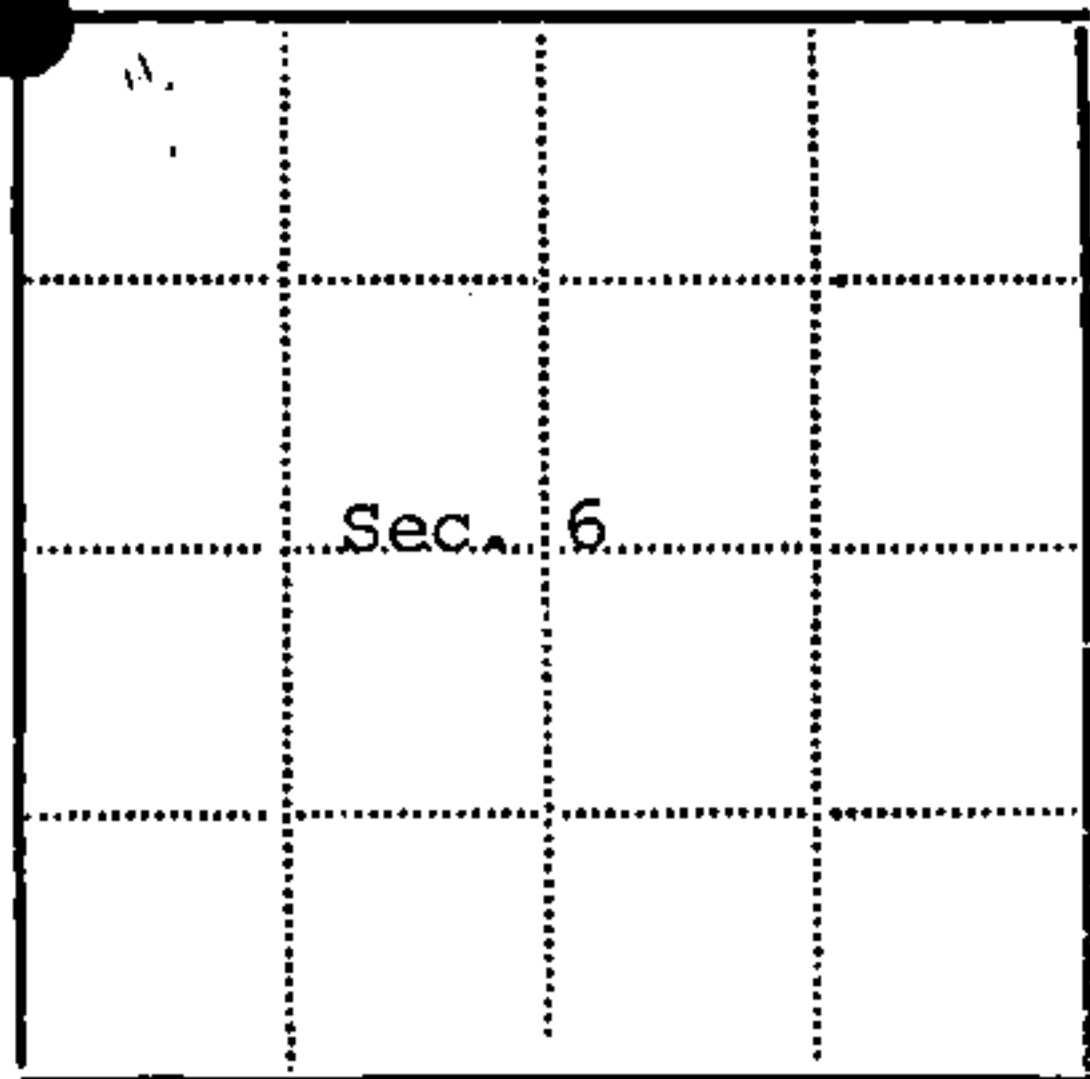
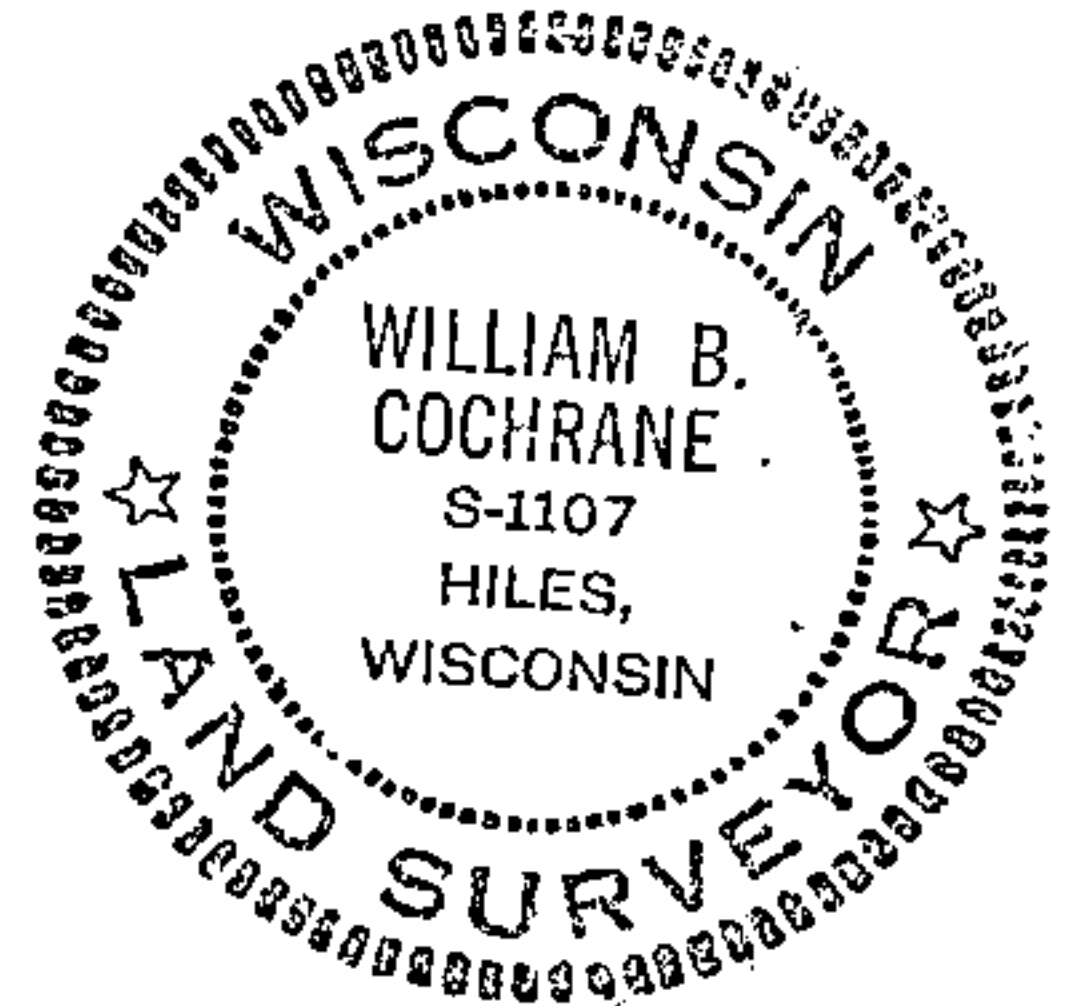
Surveyed in 1858 by Alfred Millard
83.10 West between Section 6 and 31 set post
Sugar 20, N55E, 20 lks.
Sugar 12, N28W, 36 lks.
Maple 15, S45W, 13 lks.
Yellow Birch 10, S10E, 36 lks.
10 chains East enter marsh North and South
5.82 South stream 75 lks. wide Southeast
8.75 West stream 50 lks. wide Southeast
Description of corner evidence found:

Iron pipe 1 1/2 inch diameter, 18" above ground
Birch stump S10E, 36 lks.
10 chains East enter swamp
5.80 chains South to right bank of Pine River, runs Southeast
9.00 chains West intersect river runs Southeast

Description of monument and accessories I established to perpetuate the location of this corner:

Replaced the iron pipe found with a 2 inch inside diameter galvanized pipe, 3 feet long, filled with concrete with a brass cap stamped:
T40N, R13E, R14E, S36, S31, S1, S6, T39N, 1975, S-1107
From which the following bear:
Balsam 9 in. diameter S54E, 71.08 ft.
Balsam 6 in. diameter S3W, 95.81 ft.
Set a steel sign post Southeast 0.50 ft.

440 13360000



● - Corner monument restored
□ -

Resident witnesses.....

Dated at Three Lakes Wisconsin, this 14th day of December 1975.

Signature William B. Cochrane Title Survey Technician
(County Surveyor, Registered Land Surveyor, or other duly authorized official)

Surveyors Registration No. S-1107 DOCUMENT NUMBER 108556

Office of Register of Deeds County of Forest

I hereby certify that the within instrument was filed in this office for record on the 14th day of January 1976, and was filed in Book No. Page No. of County Records.

Signature Eugene Statny Title Register of Deeds

Township 39 North, Range 14 East, Section 6, Index No. A-1, Page No.