

U.S. PUBLIC LAND SURVEY MONUMENT RECORD

Index No. A-17

State of Wisconsin }
County of Forest } ss.

I Gary L. Pisoni, do hereby certify that on the 25th day of July, 1990, I found evidence of the Northwest Section corner of Section 2 Township 39, North, Range 13 East, Fourth Principal Meridian, as described hereon; and that from this evidence I established a new monument and accessories as described hereon to perpetuate the original location of this corner.

Resident witnesses:

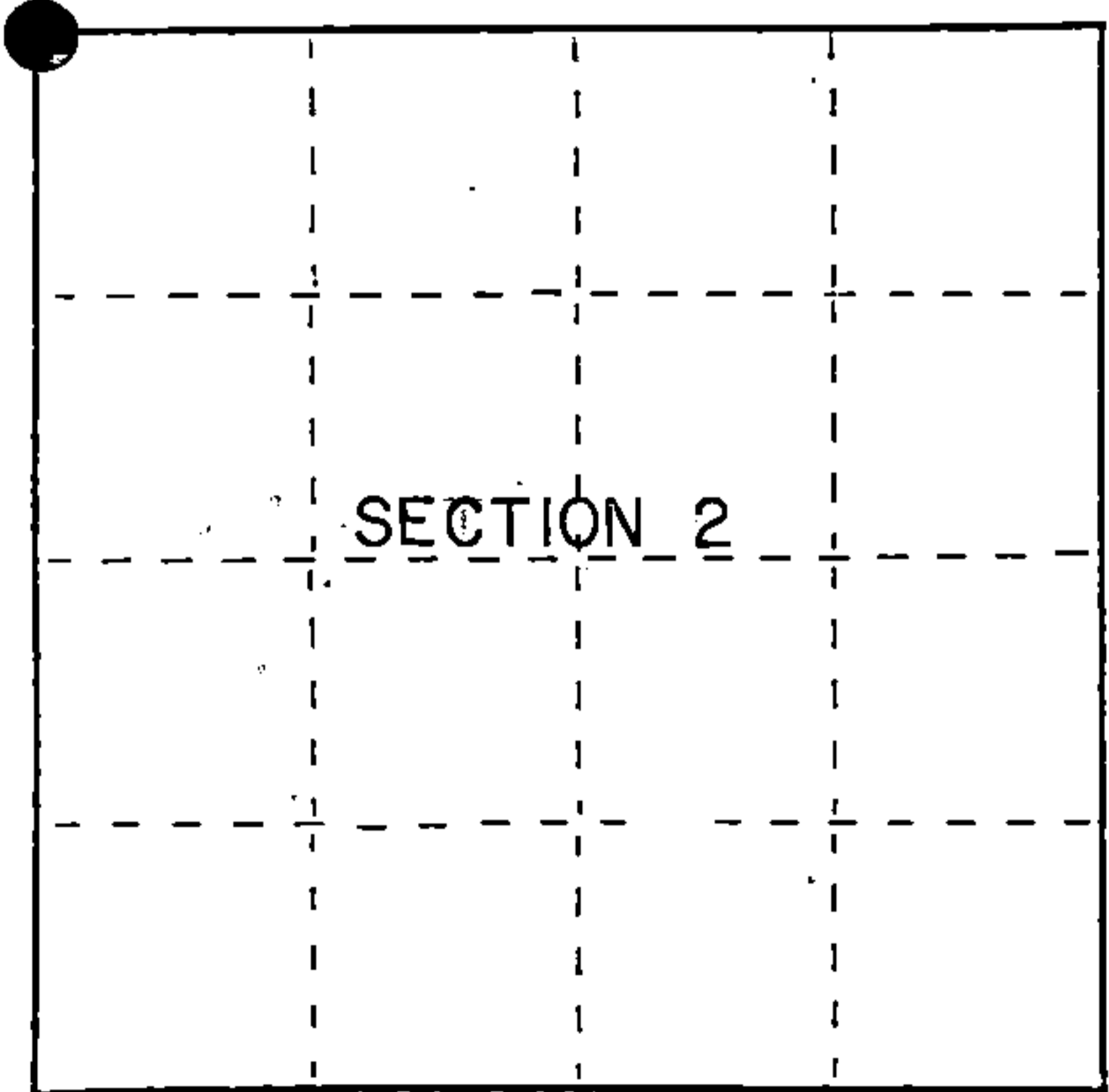
History of original corner establishment:
Original Government Survey in 1858 by Alfred Millard.

Dependent Resurvey in 1978 by Gary L. Kratz and Michael J. Avery. S89°58'W between Sections 35 and 2, at 39.81 chains, found a 2½" diameter iron pipe which is locally accepted as the corner position. In place of pipe, set an aluminum post, 30" long, 2½" in diameter, 26" in the ground with a cap mkd; T40N, R13E, S34, S35, S3, S2, T39N, 1978. From which the following bear; Basswood, 13", N78°E, 28 lks., Basswood, 12", S26 E, 36 lks., Basswood, 11", S43°W, 74 lks., Maple, 10", N68°W, 66 lks. Re-set iron pipe alongside monument.

Description of corner evidence found:
Found monument and iron pipe as described, from which the following bear;

DBL Basswood	14"	N81°E	18.80 feet
CLMP Basswood	13"	S25°E	23.72 feet
Basswood	13"	S45°W	48.85 feet
Sugar Maple	12"	N71°W	42.81 feet
Steel Sign Post		S26°W	1.00 feet

Description of monument and accessories I established to perpetuate the original location of this corner.
Set a Steel Sign Post S26°W 1.00 feet



● = Corner monument restored.

Dated at Iron River, MI, ~~was~~ this 20th day of August, 1990

Signature Gary L. Pisoni Title Land Surveyor Registration No S-1634
(County Surveyor, Registered Land Surveyor, or other duly authorized official)

Office of Register of Deeds, County of Forest, I hereby certify that the within instrument was filed in this office for record on the 10th day of March, 1993 at 10:45 o'clock A. M.

Paul Schenck
(Register of Deeds)

By _____ Deputy

FORM NO. 985-A

H.C. Miller Company
Milwaukee, Wisconsin

Stock No. 26273

146894

44013340000

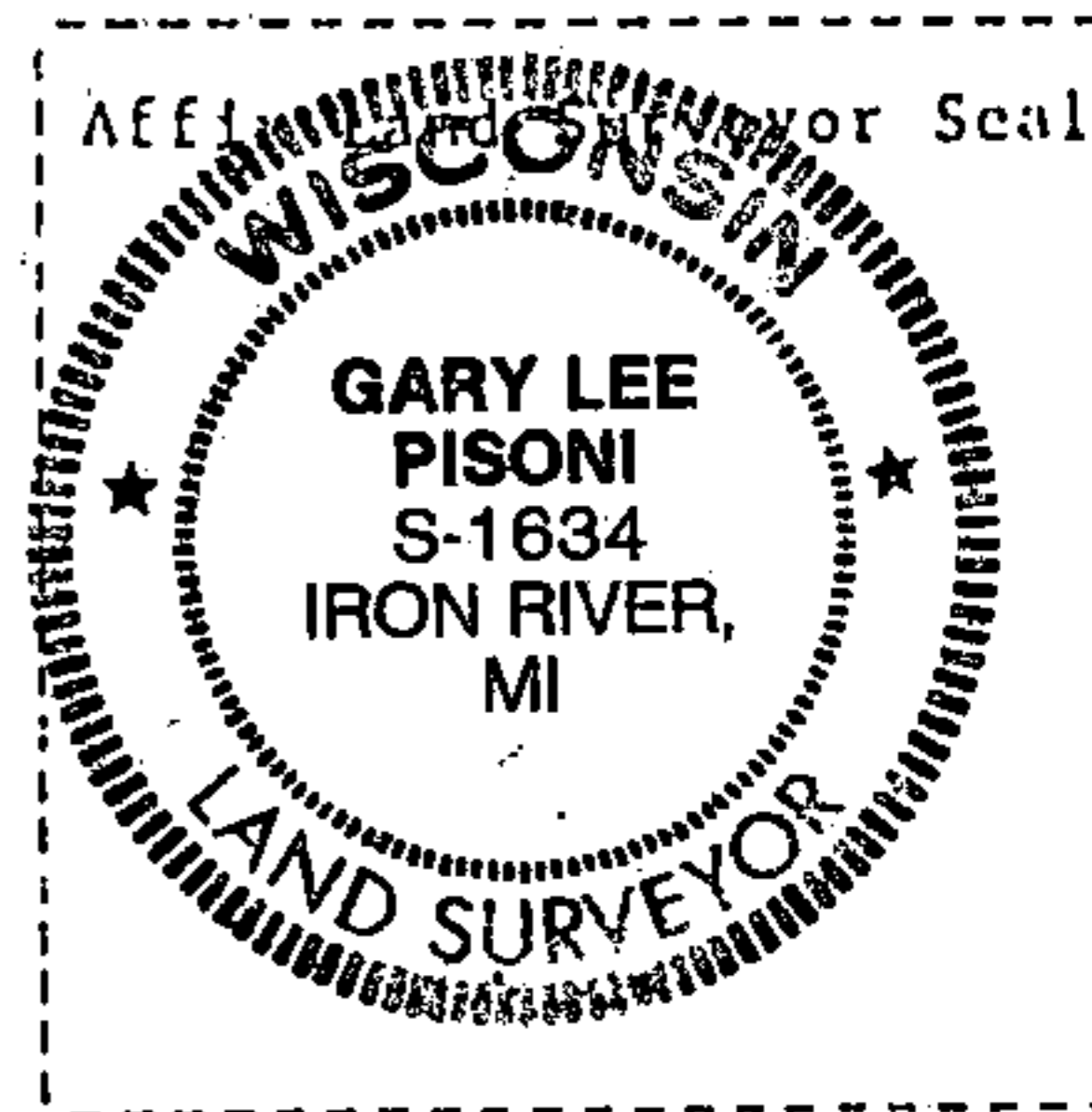
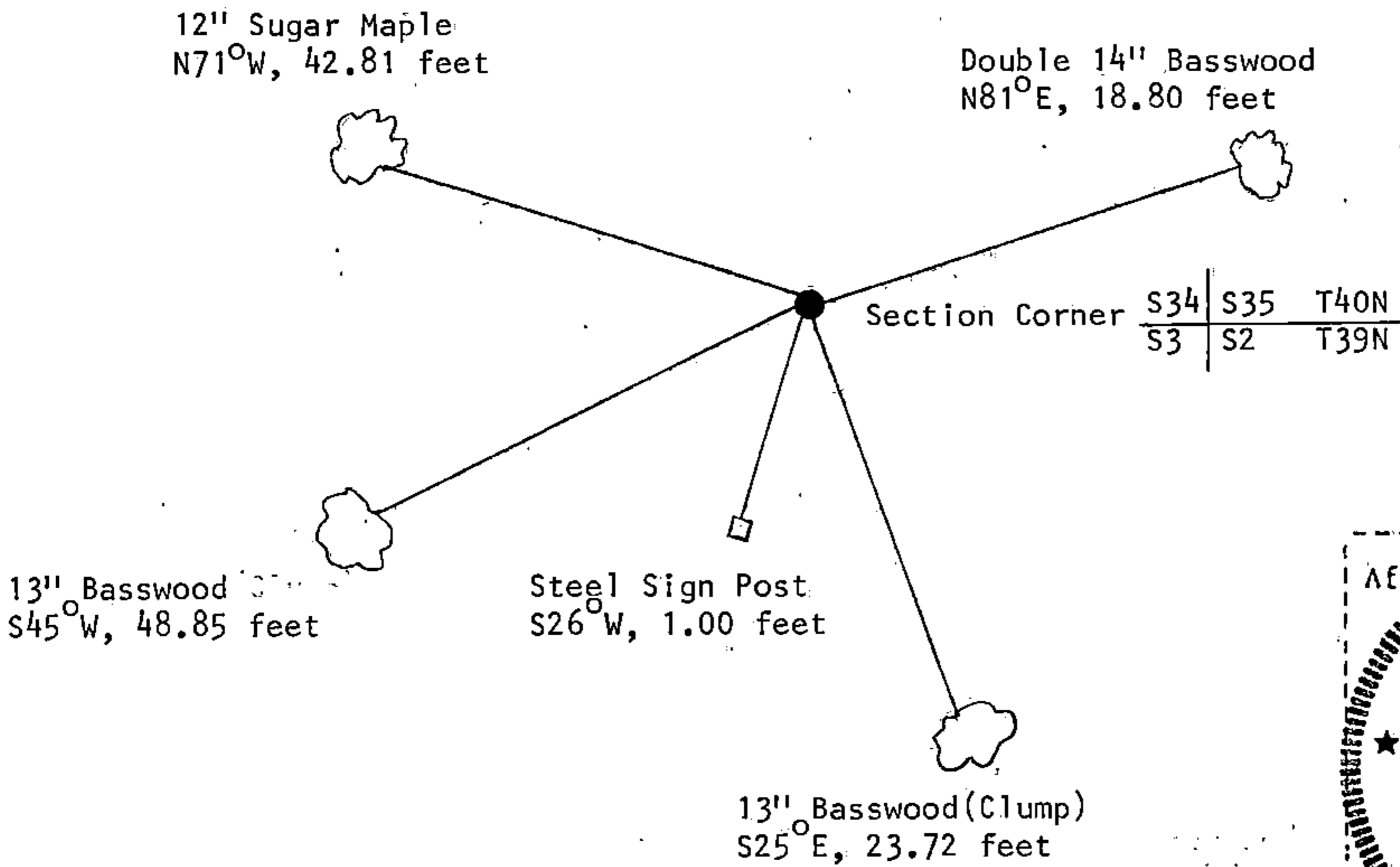
e) Describe any material discrepancy between the location of the corner as restored or reestablished and the location of that corner as previously restored or reestablished by distance and direction. Show the discrepancy on the plan view drawing under (d), above. Show the distances between the corner as previously restored or reestablished and (1) the corner as restored or reestablished, and (2) to at least 2 of the witness monuments shown on the drawing in (d), above.

See drawing below.

(f) Was the corner restored through acceptance of (1) an obliterated evidence location, or, (2) a found perpetuated location?

Restored through acceptance of a found perpetuated location.

(g&h) Was the corner reestablished through lost corner proportionate methods? If so, show the method, including the directions and distances to other public land survey corners used as evidence or used for proportioning in determining the corner location?



(i) I, Gary L. Pisoni
(Type or print name) certify that the corner location shown on this record was determined by me or under my direction and control and that this U.S. Public Land Survey Monument Record is correct and complete to the best of my knowledge and belief.

Gary L. Pisoni 11/21/91
Signature Date

Survey requested by: Pam Bark 12/17/92
District Ranger Date