

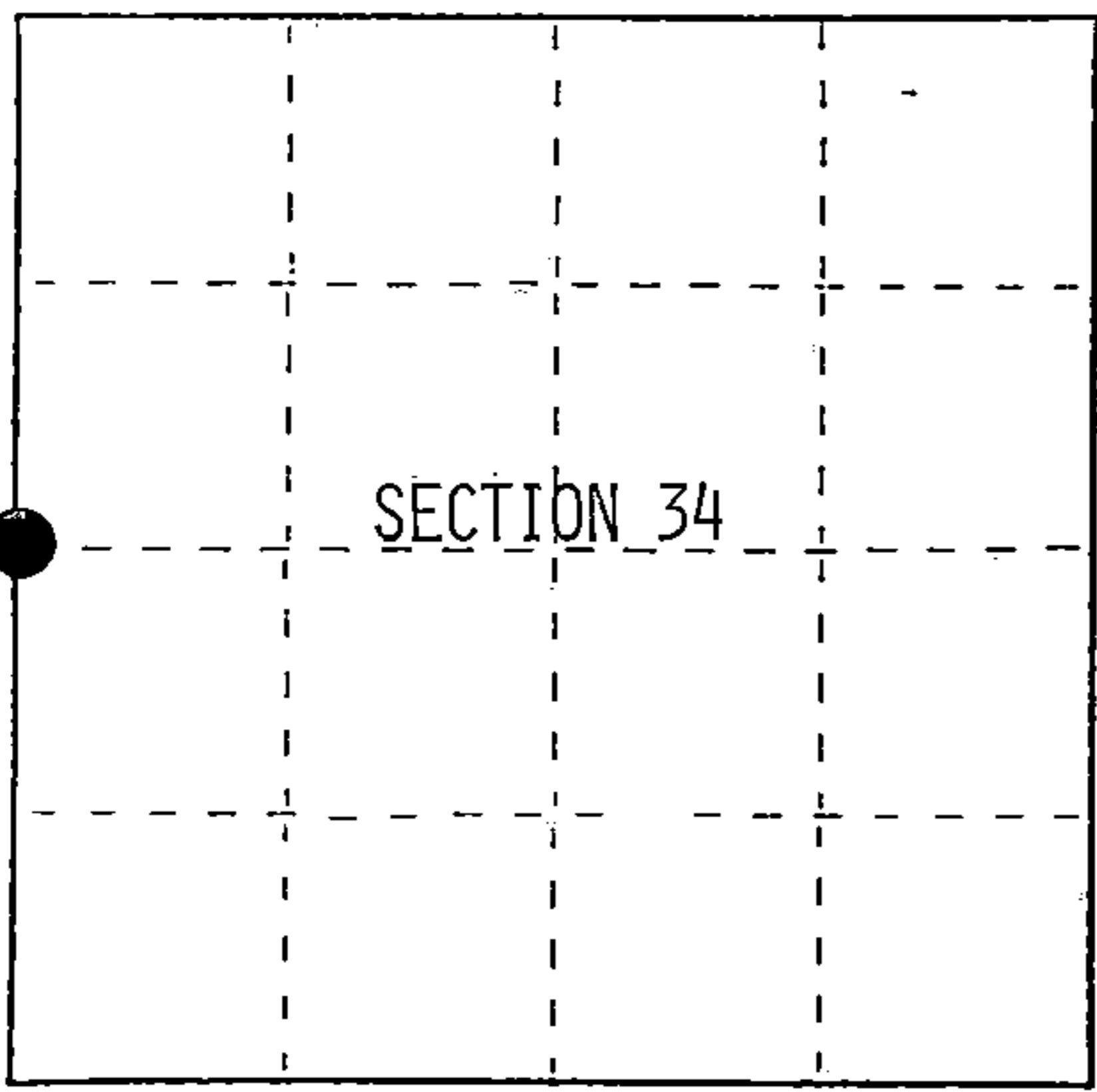
U.S. PUBLIC LAND SURVEY MONUMENT RECORD

Index No. X-13

State of Wisconsin }  
County of Forest } ss.

I, William B. Cochrane, do hereby certify that on the 22nd day of August, 1991, I found evidence of the West Quarter corner of Section 34 Township 40 North, Range 13 East, Fourth Principal Meridian, as described hereon; and that from this evidence I established a new monument and accessories as described hereon to perpetuate the original location of this corner.

Resident witnesses:  
\_\_\_\_\_  
\_\_\_\_\_  
\_\_\_\_\_



● = Corner monument restored.

History of original corner establishment:

Original Government Survey in 1865 by William E. Daugherty. North between Sections 33 and 34, at 40.00 chains, set Quarter Section Post, from which the following bear;

Cedar	6"	S62°W	5 lks.
Cedar	10"	S60°E	12 lks.

Description of corner evidence found:

No corner evidence was recovered.

I re-established the corner position at mid-point and on line between the Northwest and Southwest Section Corners of Section 34.

Description of monument and accessories I established to perpetuate the original location of this corner.

At the corner position, set a 2½ inch diameter aluminum pipe monument, 3 feet long, 2½ feet in the ground, with an aluminum cap stamped; T40N R13E, 1/4, S33, S34, 1991, S-1107. From which the following new blazed and scribed bearing trees bear;

W. Birch	9"	S28°W	24.38 feet
W. Birch	8"	N10°W	20.83 feet
Steel Sign Post		West	0.50 feet

Dated at Hiles, Wis., this 19th day of February, 1992.

Signature *William B. Cochrane* Title Land Surveyor Registration No. S-1107  
(County Surveyor, Registered Land Surveyor, or other duly authorized official)

Office of Register of Deeds, County of Forest, I hereby certify that the within instrument was filed in this office for record on the 31st day of August, 1992 at 10:15 o'clock A.M.

*Paul Aschenbrenner*  
(Register of Deeds)

By \_\_\_\_\_ Deputy

FORM NO. 985-A  
McWalter Company

Stock No. 26273  
DOCUMENT NUMBER  
145386

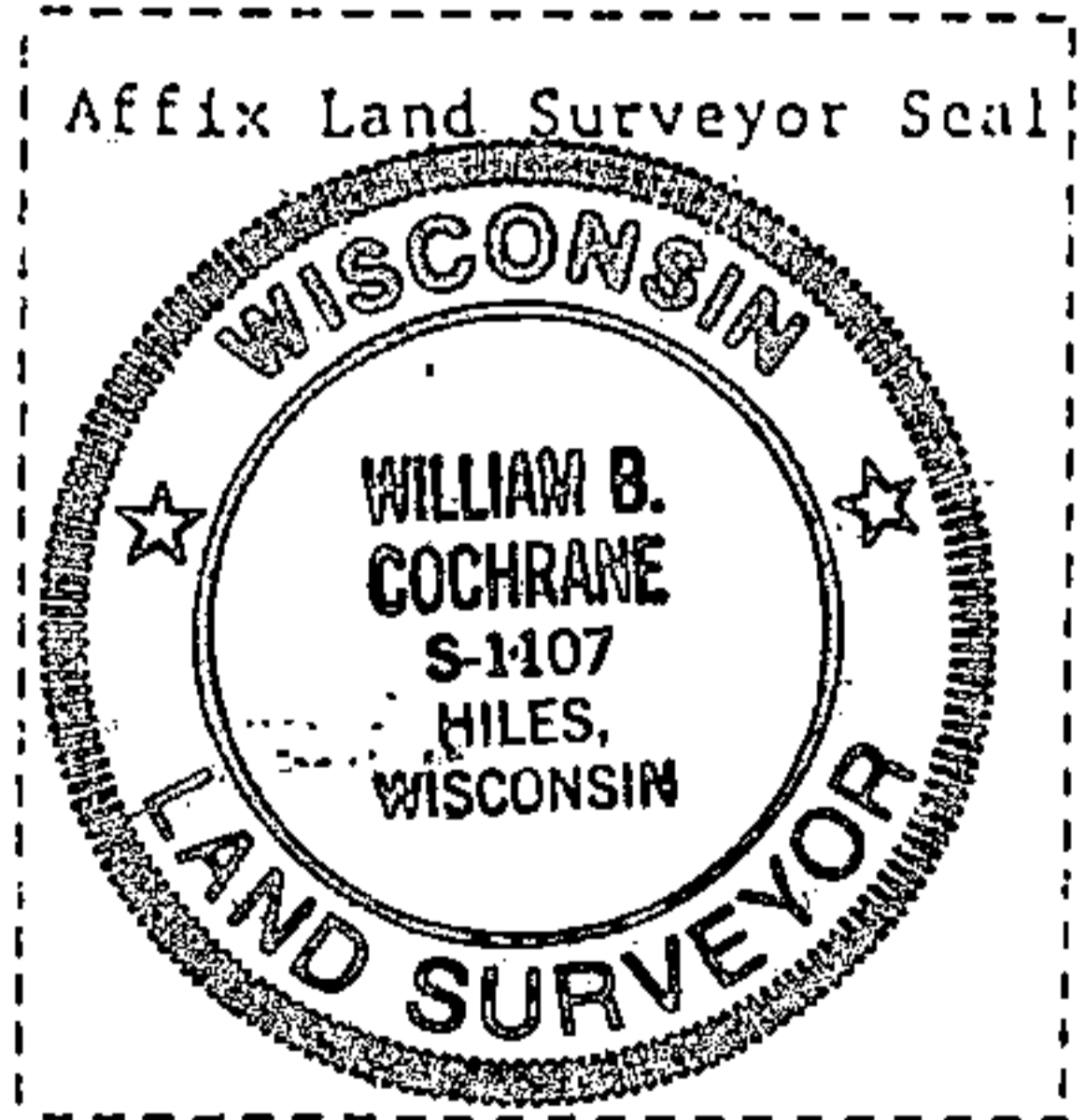
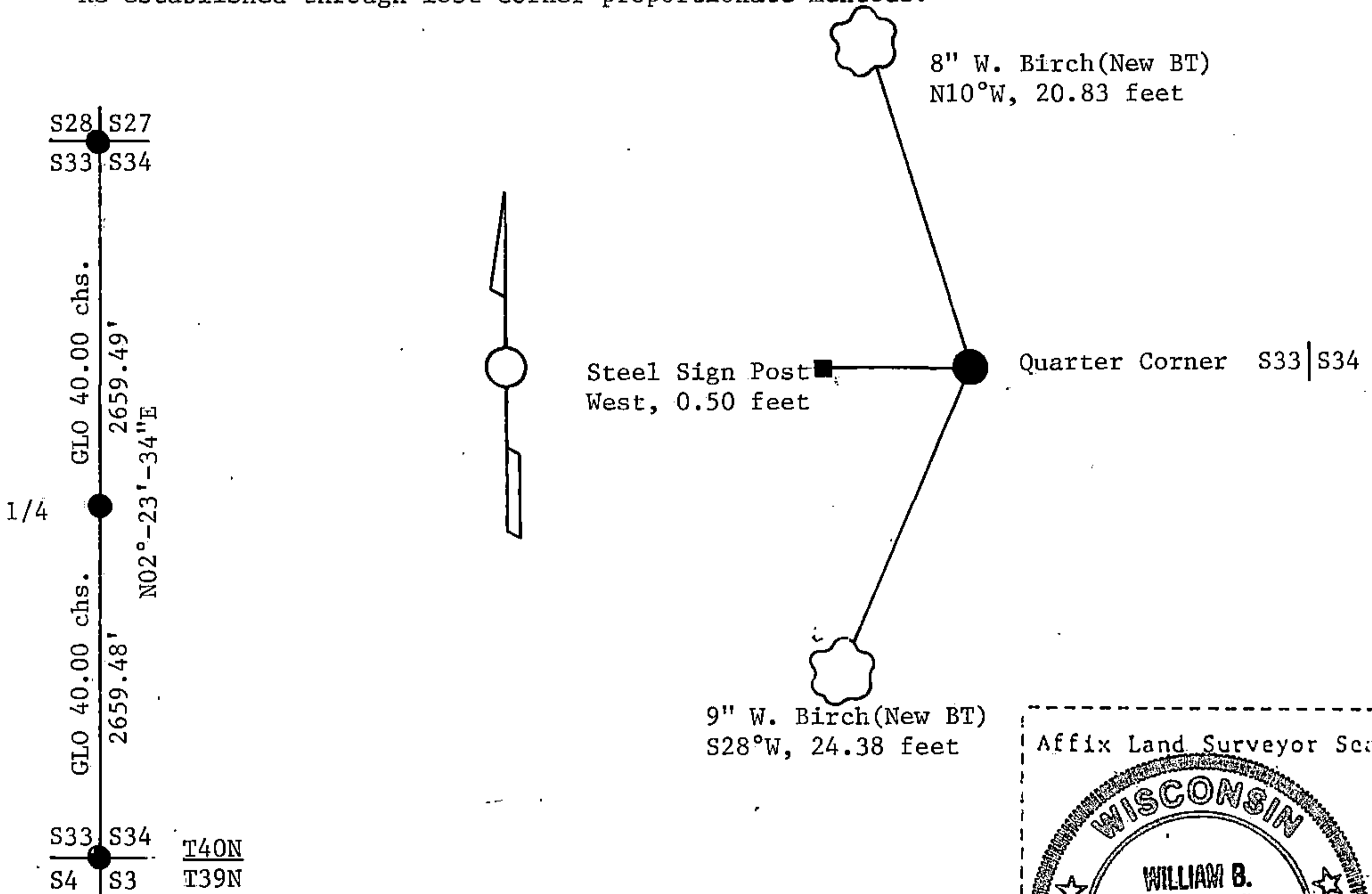
44013332000

(e) Describe any material discrepancy between the location of the corner as restored or reestablished and the location of that corner as previously restored or reestablished by distance and direction. Show the discrepancy on the plan view drawing under (d), above. Show the distances between the corner as previously restored or reestablished and (1) the corner as restored or reestablished, and (2) to at least 2 of the witness monuments shown on the drawing in (d), above.

See drawing below.

(f) Was the corner restored through acceptance of (1) an obliterated evidence location, or, (2) a found perpetuated location?

(g&h) Was the corner reestablished through lost corner proportionate methods? If so, show the method, including the directions and distances to other public land survey corners used as evidence or used for proportioning in determining the corner location?  
 Re-established through lost corner proportionate methods.



(i) I, William B. Cochrane  
 (type or print name) certify that the corner location shown on this record was determined by me or under my direction and control and that this U.S. Public Land Survey Monument Record is correct and complete to the best of my knowledge and belief.

William B. Cochrane March 25, 1992  
 Signature Date

Survey requested by: Tom Gordon 3/23/92  
 District Ranger Date