

CERTIFIED LAND CORNER RESTORATION

Index No. A-9

State of Wisconsin }  
 County of Forest } ss.

I William B. Cochrane, do hereby certify that on the 26th day of October, 1988, I found evidence of the Northeast Section corner of Section 5 Township 39, North, Range 13 East, Fourth Principal Meridian, as described hereon; and that from this evidence I established a new monument and accessories as described hereon to perpetuate the original location of this corner.

Resident witnesses:

.....

.....

.....

History of original corner establishment:  
 Original Government survey in 1858 by Alfred Millard.  
 At 80 chains west between sections 4 and 33 set post from which:

Lynn	12"	N03°E	24 lks
Lynn	10"	S04°E	33 lks
Spruce	10"	S30°W	13 lks
Hemlock	11"	N67°W	20 lks

West 9 chains enter swamp

Description of corner evidence found:

Found 3"X3" squared wood post, metal location tag on down cedar, 9 chains west enter swamp.  
 Location post on Forest Road 2174 East 13 chains.

Description of monument and accessories I established to perpetuate the original location of this corner.

In place of wood post accepted as the best remaining evidence of the corner position, Set a 2½"X36" aluminum pipe monument 2½ feet in the ground with an aluminum cap stamped: T40N, R13E, S32, S33, T39N, S4, S5, 1988. From which the following bear:

Maple	10"	N48°E	8.50 feet
Maple	8"	S65°E	29.94 feet
Maple	12"	S35°W	10.86 feet
Maple	11"	N80°W	16.32 feet
Steel sign post		Northwest	1.00 feet

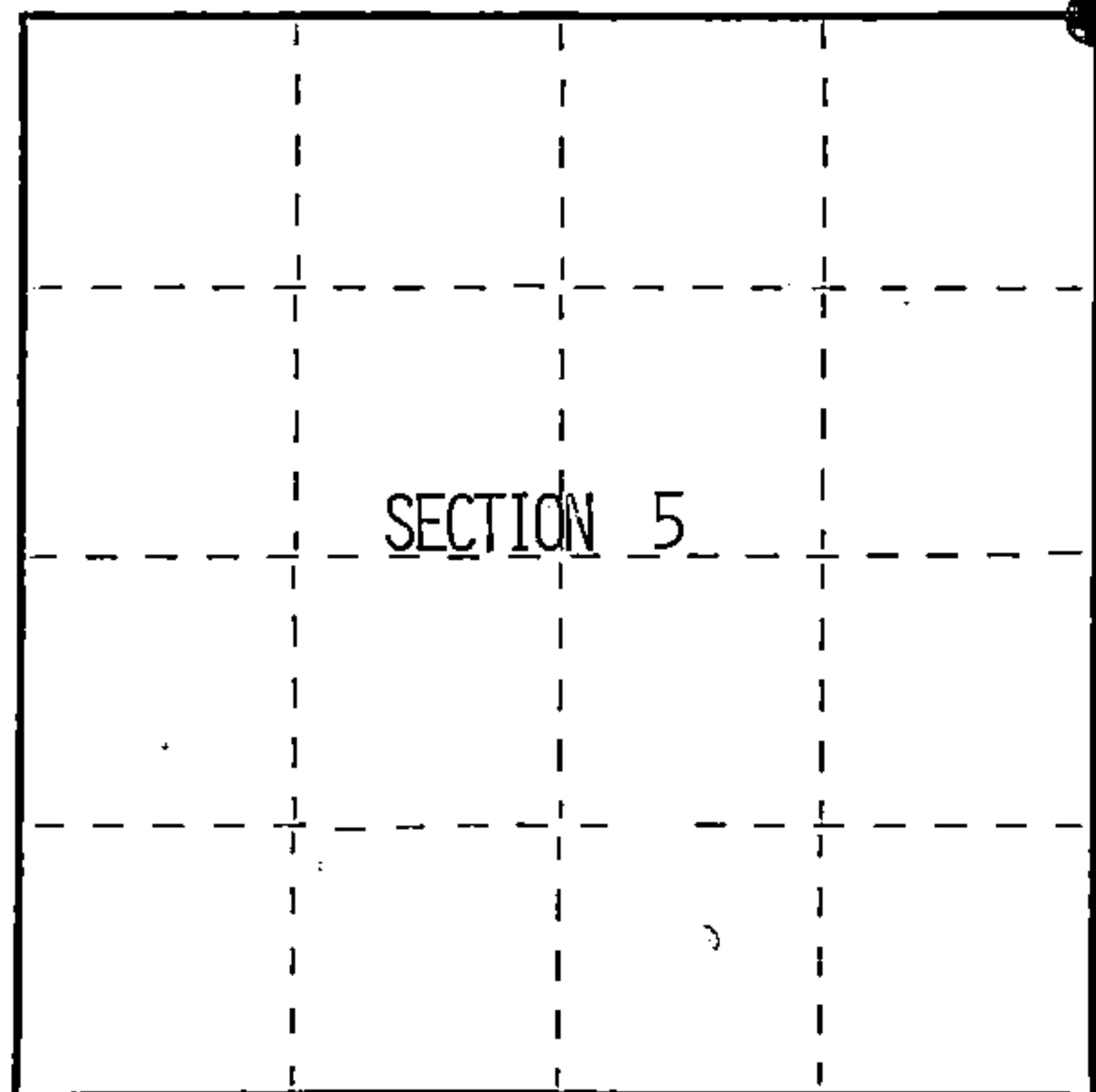
Dated at Hiles, Wis., this 28th day of December, 1994

Signature William B. Cochrane Title Land Surveyor Registration No. S-1107  
 (County Surveyor, Registered Land Surveyor, or other duly authorized official)

Office of Register of Deeds, County of Forest, I hereby certify that the within instrument was filed in this office for record on the 23rd day of August, 1996 at 2:30 o'clock P. M.

(Register of Deeds)

By Paul Jankovic Deputy



● = Corner monument restored.

FORM NO. 985-A

M.C. Miller Company

Stock No. 26273

156559

44013320000

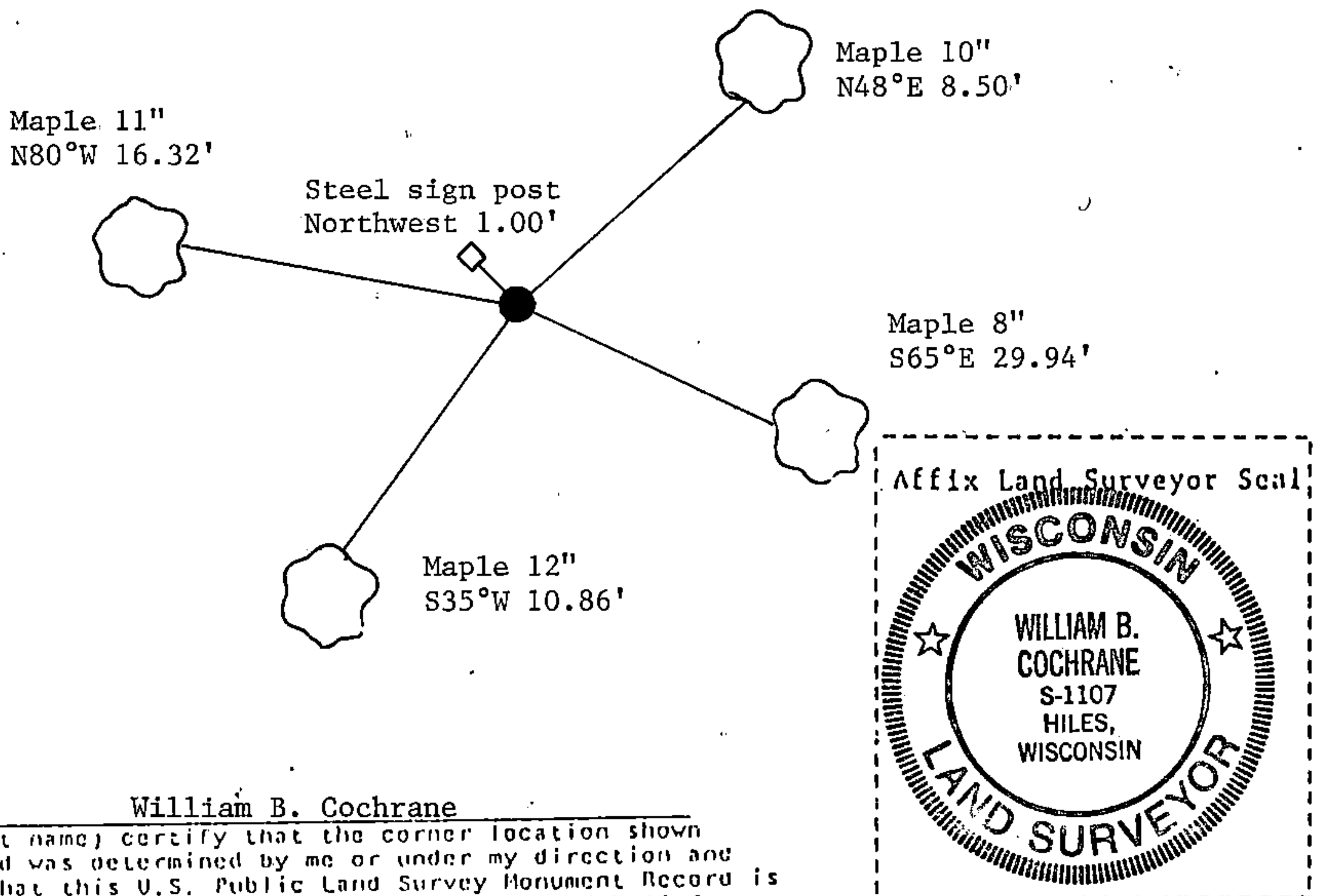
(e) Describe any material discrepancy between the location of the corner as restored or reestablished and the location of that corner as previously restored or reestablished by distance and direction. Show the discrepancy on the plan view drawing under (d), above. Show the distances between the corner as previously restored or reestablished and (1) the corner as restored or reestablished, and (2) to at least 2 of the witness monuments shown on the drawing in (d), above.

See drawing below.

(f) Was the corner restored through acceptance of (1) an obliterated evidence location, or, (2) a found perpetuated location?

Corner restored through acceptance of found wood post.

(g&h) Was the corner reestablished through lost corner proportionate methods? If so, show the method, including the directions and distances to other public land survey corners used as evidence or used for proportioning in determining the corner location?



(i) I, William B. Cochrane  
(type or print name) certify that the corner location shown on this record was determined by me or under my direction and control and that this U.S. Public Land Survey Monument Record is correct and complete to the best of my knowledge and belief.

William B. Cochrane                      12/28/94  
Signature    Date