

U.S. PUBLIC LAND SURVEY MONUMENT RECORD

Index No. V-17

State of Wisconsin

County of Forest } ss.

I, William B. Cochran, do hereby certify that on the 17th day of October, 1991, I found evidence of the Southwest Section corner of Section 26 Township 40, North, Range 13 East, Fourth Principal Meridian, as described hereon; and that from this evidence I established a new monument and accessories as described hereon to perpetuate the original location of this corner.

Resident witnesses:

History of original corner establishment:

Original Government Survey in 1865 by William E. Daugherty. North between Sections 34 and 35, at 80.00 chains, set Quarter Section Post, from which the following bear;

Cedar	8"	S46°E	15 lks.
Birch	10"	N24°W	72 lks.

Description of corner evidence found:

Found scribed wood post painted with foresters paint.

No original corner evidence was recovered.

I accept the wood post as the best available evidence for restoring the corner position.

Description of monument and accessories I established to perpetuate the original location of this corner.

In place of wood post, set a 2½ inch diameter aluminum pipe monument, 5 feet long, 4 feet in the ground, with an aluminum cap stamped; T40N, R13E, S26, S27, S34, S35, 1991, S-1107. From which the following new blazed and scribed bearing trees bear;

B. Spruce	5"	N69°E	12.56 feet
B. Spruce	4"	S06°W	42.03 feet
B. Spruce	5"	S86°W	47.02 feet
B. Spruce	3"	N50°W	27.30 feet
Steel Sign Post		Southwest	0.75 feet

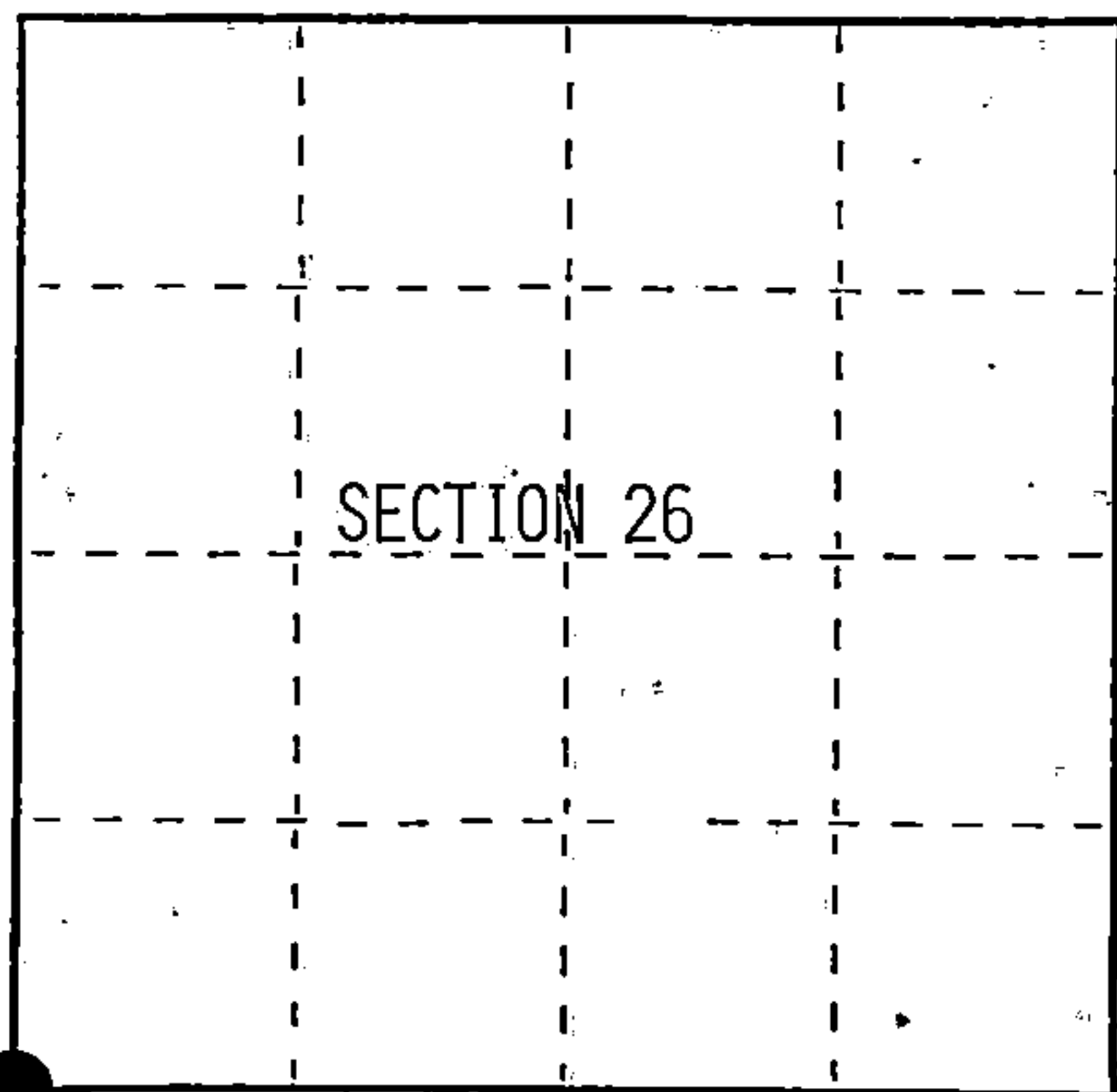
Dated at Hiles, Wis., this 19th day of February, 1992

Signature William B. Cochran Title Land Surveyor Registration No. S-1107
(County Surveyor, Registered Land Surveyor, or other duly authorized official)

Office of Register of Deeds, County of Forest, I hereby certify that the within instrument was filed in this office for record on the 31st day of August, 1992 at 10:15 o'clock A. M.

Paul A. Schreiber
(Register of Deeds)

By _____ Deputy



○ = Corner monument restored.

FORM NO. 985-A

H.C. Miller Company

Stock No. 26273

DOCUMENT NUMBER

145382

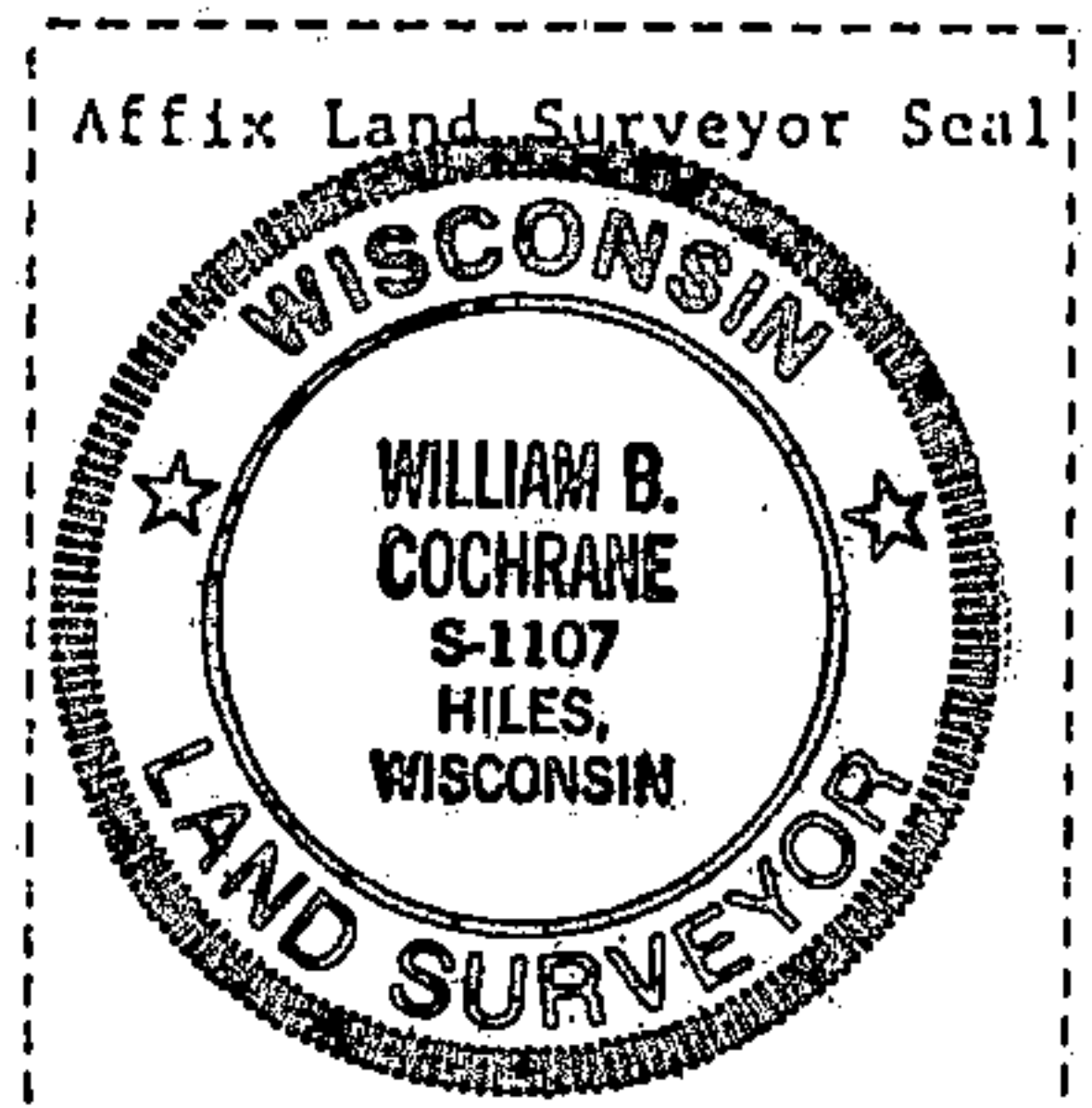
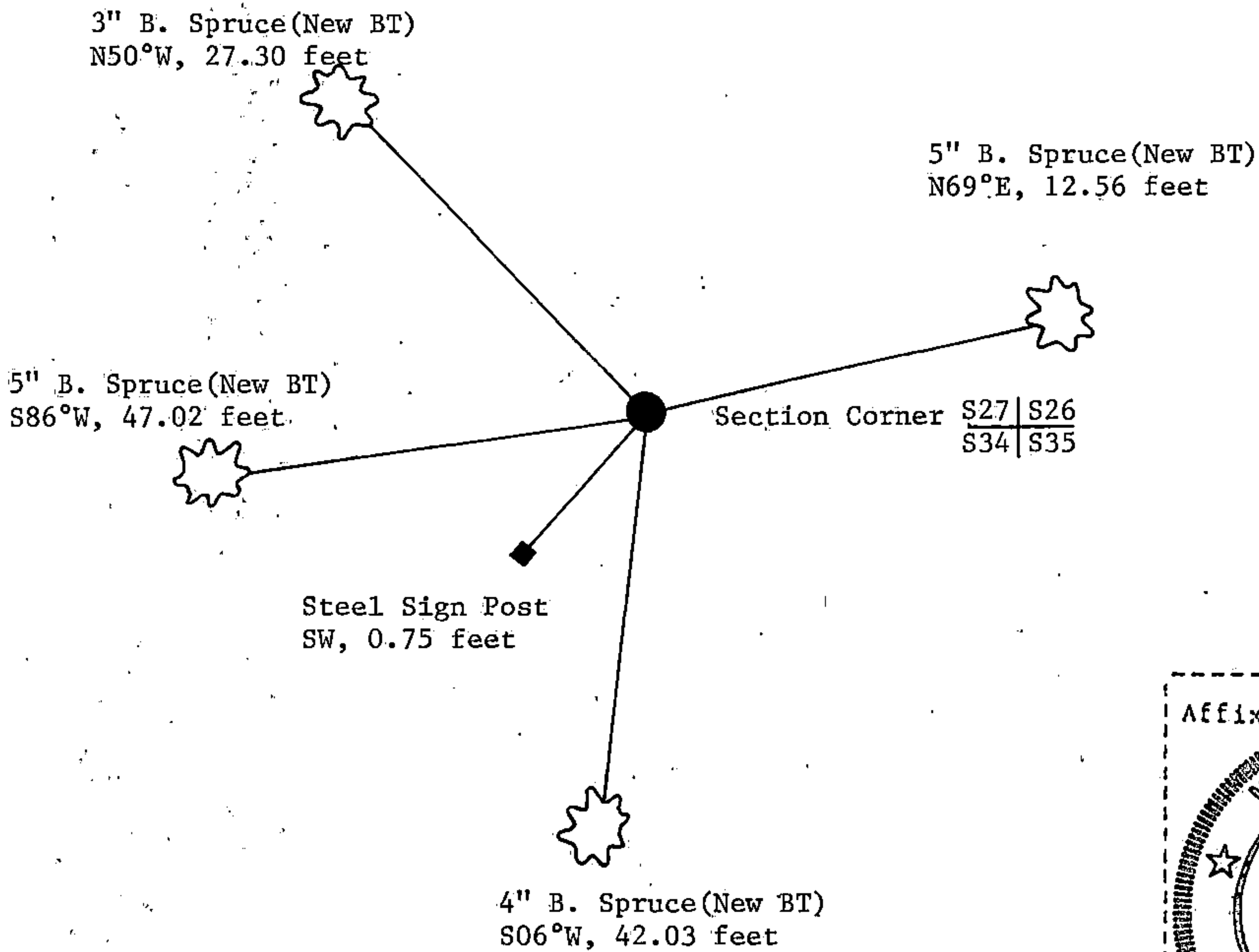
44013270000

(e) Describe any material discrepancy between the location of the corner as restored or reestablished and the location of that corner as previously restored or reestablished by distance and direction. Show the discrepancy on the plan view drawing under (d), above. Show the distances between the corner as previously restored or reestablished and (1) the corner as restored or reestablished, and (2) to at least 2 of the witness monuments shown on the drawing in (d), above.

(f) Was the corner restored through acceptance of (1) an obliterated evidence location, or, (2) a found perpetuated location?

Restored from accepted evidence.

(g&h) Was the corner reestablished through lost corner proportionate methods? If so, show the method, including the directions and distances to other public land survey corners used as evidence or used for proportioning in determining the corner location?



(i) William B. Cochrane
 (type or print name) certify that the corner location shown on this record was determined by me or under my direction and control and that this U.S. Public Land Survey Monument Record is correct and complete to the best of my knowledge and belief.

William B. Cochrane May 4, 1992
 Signature Date

Survey requested by: Tom Bondi May 4, 1992
 District Ranger Date