

U.S. PUBLIC LAND SURVEY MONUMENT RECORD

Index No. R-21

State of Wisconsin }
 County of Forest } ss.

I William B. Cochran, do hereby certify that on the 16th day of September, 1991, I found evidence of the Northeast Section corner of Section 26 Township 40, North, Range 13 East, Fourth Principal Meridian, as described hereon; and that from this evidence I established a new monument and accessories as described hereon to perpetuate the original location of this corner.

Resident witnesses:

History of original corner establishment:

Original Government Survey in 1865 by William E. Daugherty. North between Sections 25 and 26, at 80.00 chains, set Section Corner Post, from which the following bear;

Sugar	7"	N70°W	28 lks.
Birch	18"	N06°E	49 lks.

Description of corner evidence found:

Found a 1940 survey map, which shows the corner position to be in the center-line of State Hwy 55.

I re-established the corner position from the East Quarter Corner of Section 26 using proportionate distance from the 1940 survey map and the center-line of Hwy 55.

No original corner evidence was recovered.

Description of monument and accessories I established to perpetuate the original location of this corner.

At the corner position, set a railroad spike flush with the surface of Hwy 55, stamped; 23, 24, 25, 26. From which the following new blazed and scribed bearing trees bear;

Maple	6"	N42°E	61.65 feet
Spruce	9"	S52°W	59.18 feet
Spruce	11"	N56°W	61.77 feet
Set- Steel Sign Post		West	33.50 feet
Reference Monument 2½"x36"		West	33.00 feet

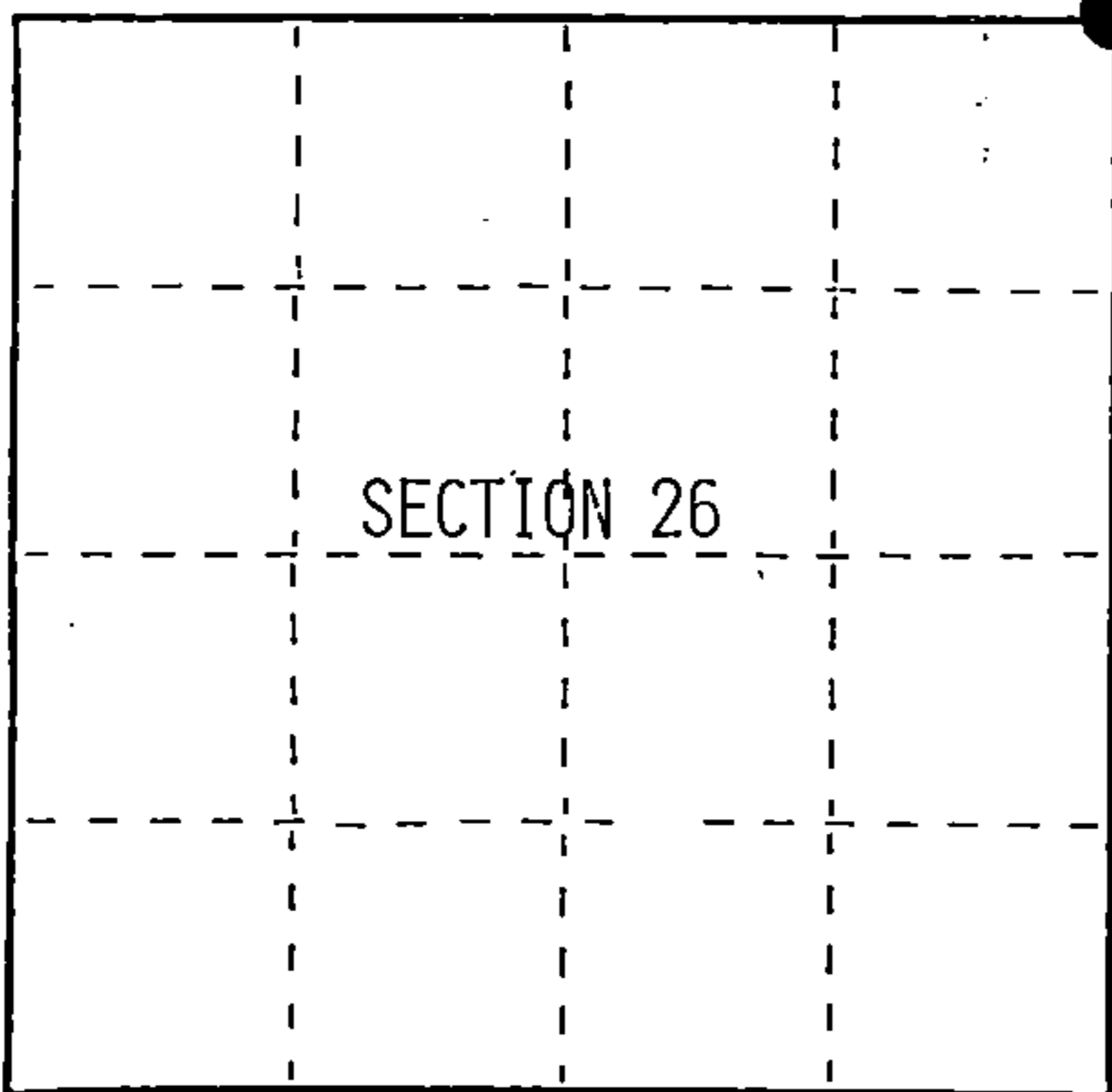
Dated at Hiles, Wis., this 19th day of February, 1992

Signature William B. Cochran Title Land Surveyor Registration No. S-1107
 (County Surveyor, Registered Land Surveyor, or other duly authorized official)

Office of Register of Deeds, County of Forest, I hereby certify that the within instrument was filed in this office for record on the 10th day of March, 1993 at 10:45 o'clock A.M.

Paul Scheubanner
 (Register of Deeds)

By _____ Deputy



○ = Corner monument restored.

FORM NO. 985-A

M.C. Miller Company

Stock No. 26273

146891

44013230000

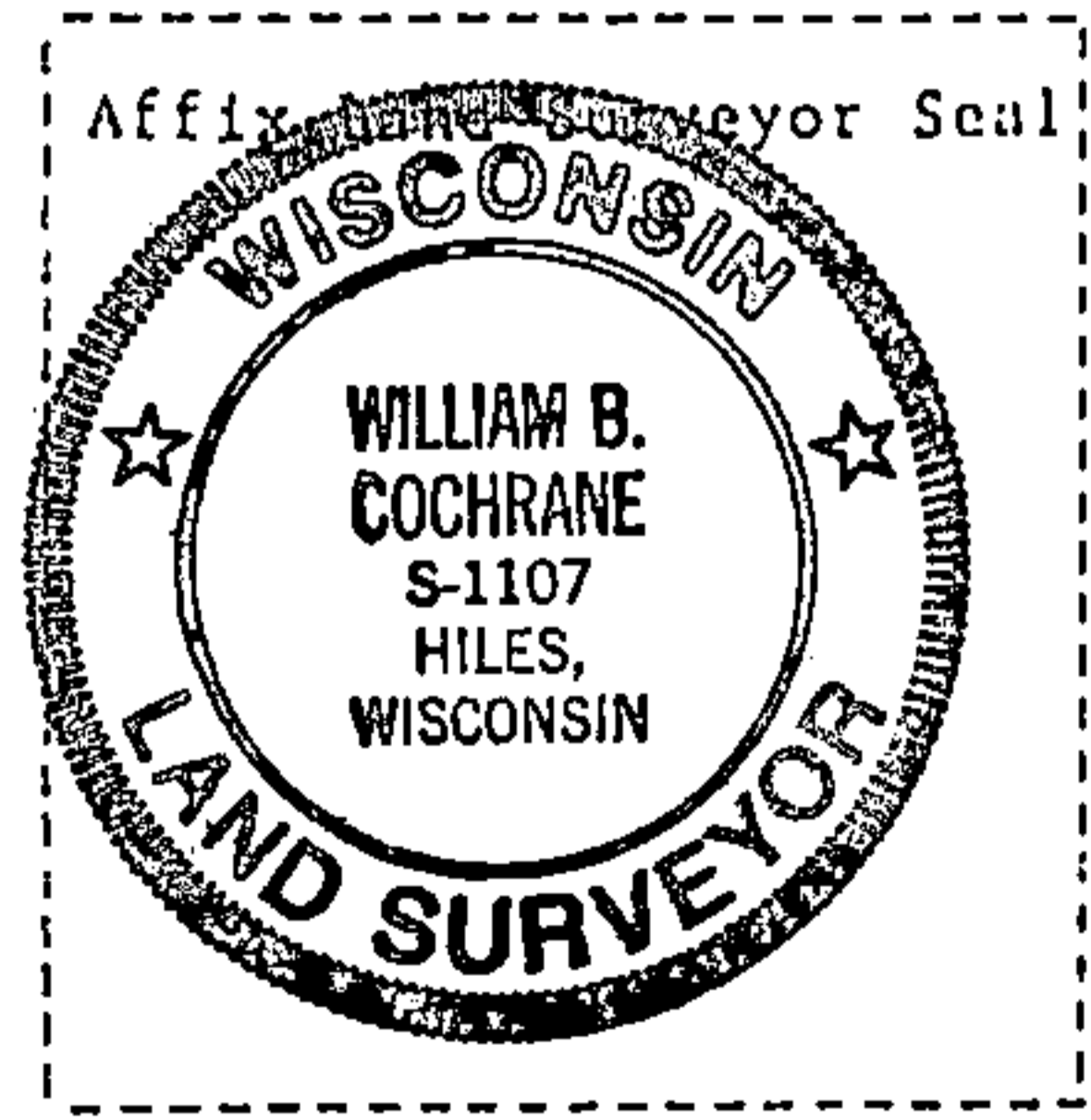
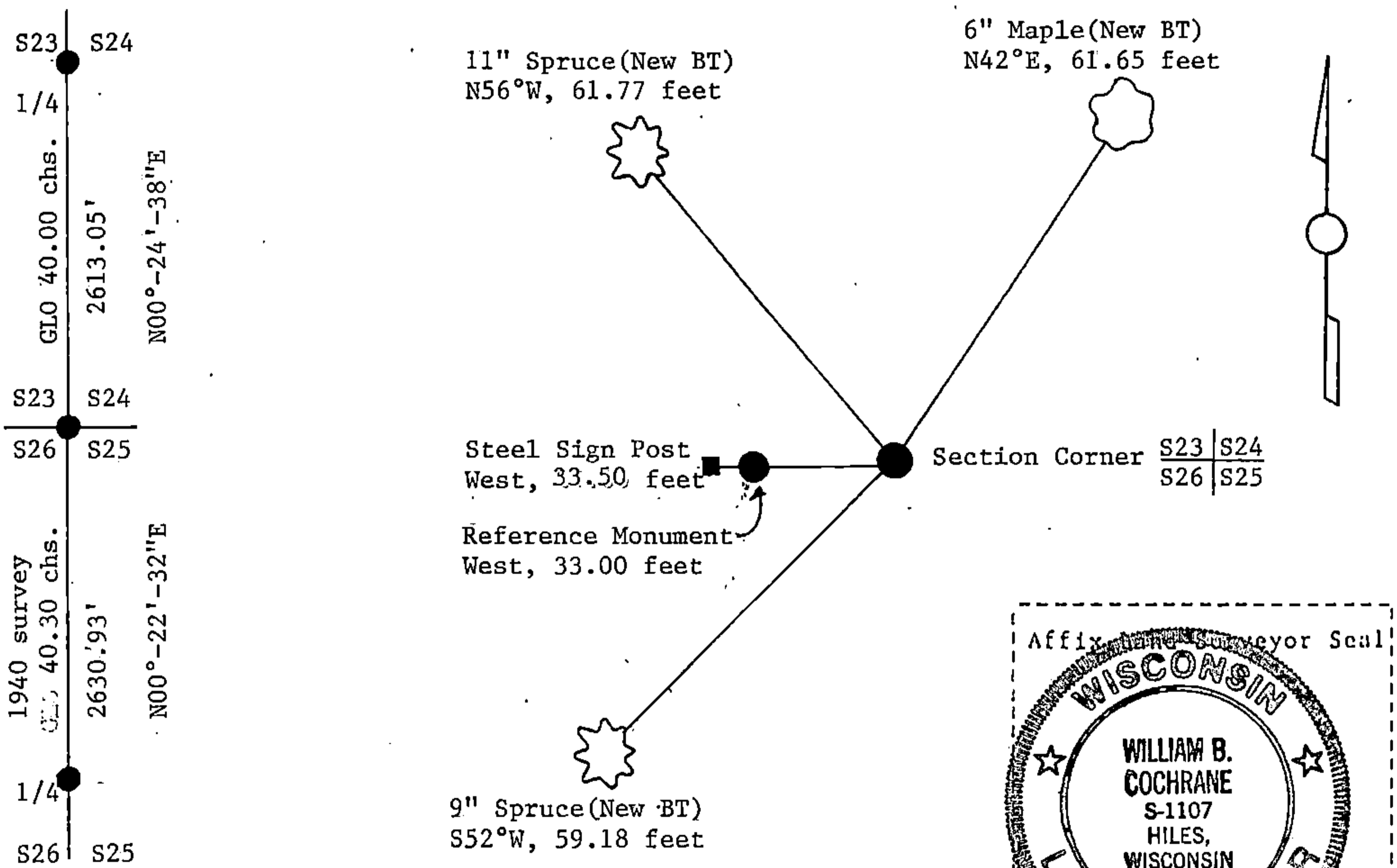
(e) Describe any material discrepancy between the location of the corner as restored or reestablished and the location of that corner as previously restored or reestablished by distance and direction. Show the discrepancy on the plan view drawing under (d), above. Show the distances between the corner as previously restored or reestablished and (1) the corner as restored or reestablished, and (2) to at least 2 of the witness monuments shown on the drawing in (d), above.

See drawing below.

(f) Was the corner restored through acceptance of (1) an obliterated evidence location, or, (2) a found perpetuated location?

(g&h) Was the corner reestablished through lost corner proportionate methods? If so, show the method, including the directions and distances to other public land survey corners used as evidence or used for proportioning in determining the corner location?

Re-established through lost corner proportionate methods.



(i) William B. Cochrane
 (type or print name) certify that the corner location shown on this record was determined by me or under my direction and control and that this U.S. Public Land Survey Monument Record is correct and complete to the best of my knowledge and belief.

William B. Cochrane May 5, 1992
 Signature Date

Survey requested by: Don Gordon 12/17/92
 District Ranger Date