

U.S. PUBLIC LAND SURVEY MONUMENT RECORD

Index No. R-17

State of Wisconsin } ss.
County of Forest

I, William B. Cochran, do hereby certify that on the 14th day of August, 1991, I found evidence of the Northwest Section corner of Section 26 Township 40 North, Range 13 East, Fourth Principal Meridian, as described hereon; and that from this evidence I established a new monument and accessories as described hereon to perpetuate the original location of this corner.

Resident witnesses:

.....
.....
.....

History of original corner establishment:

Original Government Survey in 1865 by William E. Daugherty. North between Sections 26 and 27, at 80.00 chains, set Section Corner Post, From which the following bear;

Birch	15"	N69°E	54 lks.
Birch	8"	N50°W	20 lks.

Description of corner evidence found:

Found post hole with fragments of wood post. A 14" Aspen stub with a location tag attached, bears N43°E, 6.50 feet from post hole.

I accept the post hole and location tag as the best available evidence for restoring the corner position.

Description of monument and accessories I established to perpetuate the original location of this corner.

In post hole, set a 2½ inch diameter aluminum pipe monument, 3 feet long, 2½ feet in the ground, with an aluminum cap stamped; T40N R13E, S22, S23, S26, S27, 1991, S-1107. From which the following new blazed and scribed bearing trees bear;

Maple	6"	N22°E	24.58 feet
Maple	7"	S70°E	17.96 feet
Maple	5"	S46°W	20.06 feet
Maple	4"	N74°W	19.78 feet
Set- Steel Sign Post		SE	1.00 feet

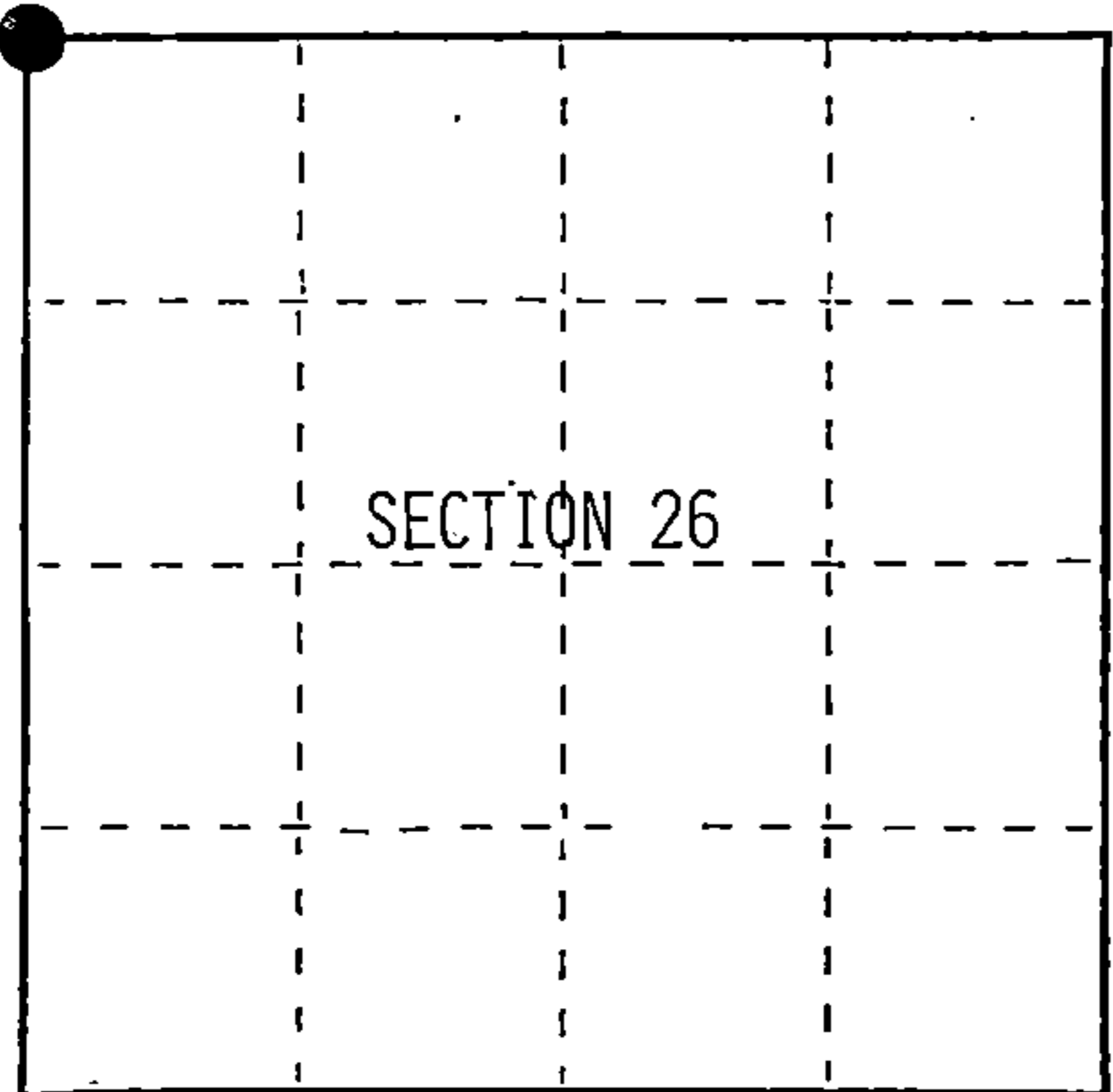
Dated at Hiles, Wis., this 18th day of February, 1992

Signature: William B. Cochran Title: Land Surveyor Registration No. S-1107
(County Surveyor, Registered Land Surveyor, or other duly authorized official)

Office of Register of Deeds, County of Forest, I hereby certify that the within instrument was filed in this office for record on the 31st day of August, 1992 at 10:15 o'clock A.M.

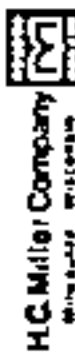
Paul Aschenbrenner
(Register of Deeds)

By _____ Deputy



○ = Corner monument restored.

FORM NO. 985-A



Stock No. 26273
DOCUMENT NUMBER

145376

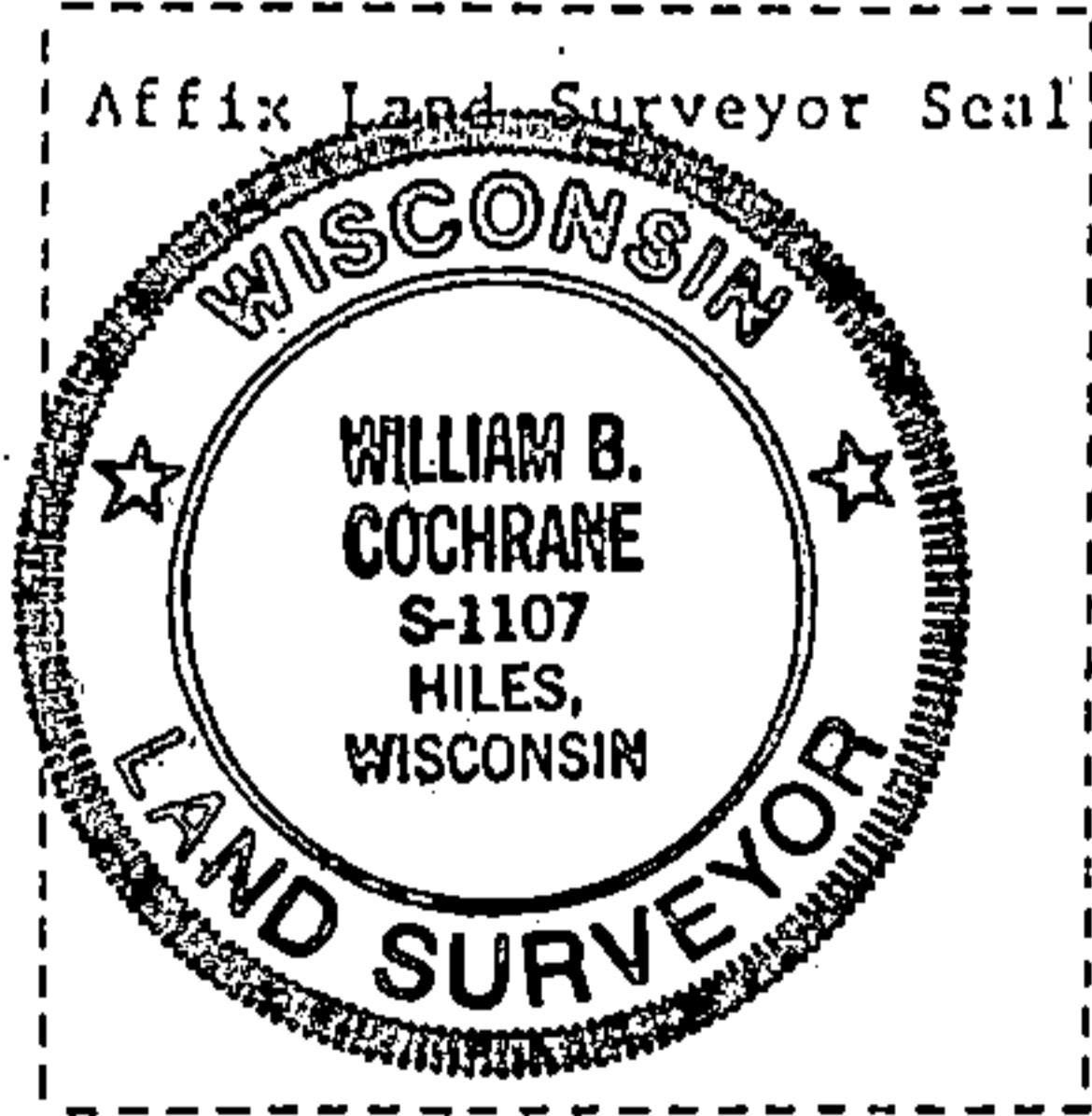
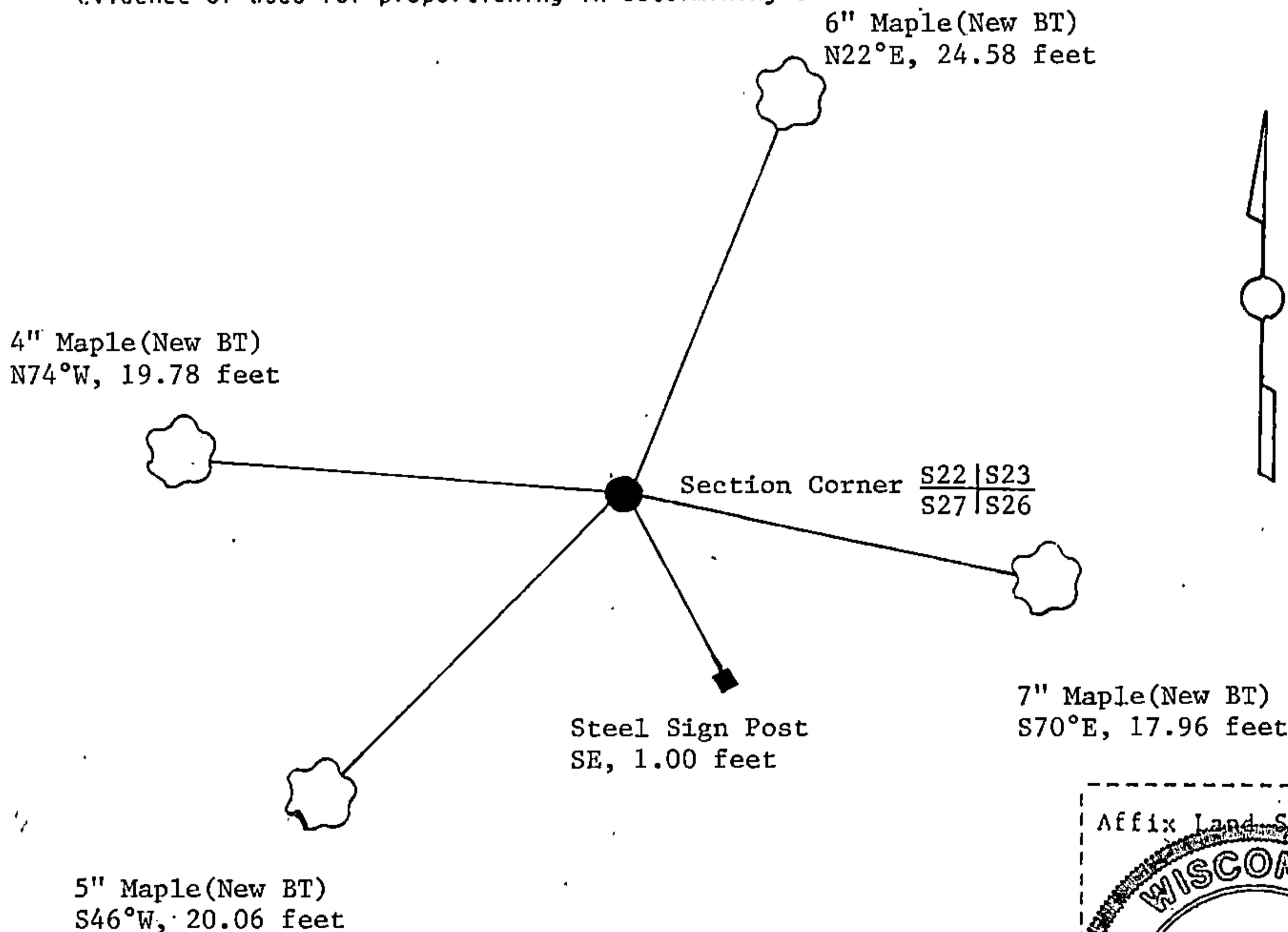
441013 22 0000

(e) Describe any material discrepancy between the location of the corner as restored or reestablished and the location of that corner as previously restored or reestablished by distance and direction. Show the discrepancy on the plan view drawing under (d), above. Show the distances between the corner as previously restored or reestablished and (1) the corner as restored or reestablished, and (2) to at least 2 of the witness monuments shown on the drawing in (d), above.

(f) Was the corner restored through acceptance of (1) an obliterated evidence location, or, (2) a found perpetuated location?

Restored from accepted evidence.

(g&h) Was the corner reestablished through lost corner proportionate methods? If so, show the method, including the directions and distances to other public land survey corners used as evidence or used for proportioning in determining the corner location?



(i) I, William B. Cochrane (type or print name) certify that the corner location shown on this record was determined by me or under my direction and control and that this U.S. Public Land Survey Monument Record is correct and complete to the best of my knowledge and belief.

William B. Cochrane Signature March 25, 1992 Date

Survey requested by; Pam Anderson District Ranger 3/23/92 Date