

CERTIFIED LAND CORNER RESTORATION

State of Wisconsin }  
County of Forest } ss.

I Jean F. Resvick, do hereby certify that on the 9 day of May, 1975, I found evidence of the Southeast Section corner of Section 20 Township 40 North, Range 13 East, Fourth Principal Meridian, as described hereon; and that from this evidence I established a new monument and accessories as described hereon to perpetuate the original location of this corner:

Description of original monument and accessories and subsequent restorations:

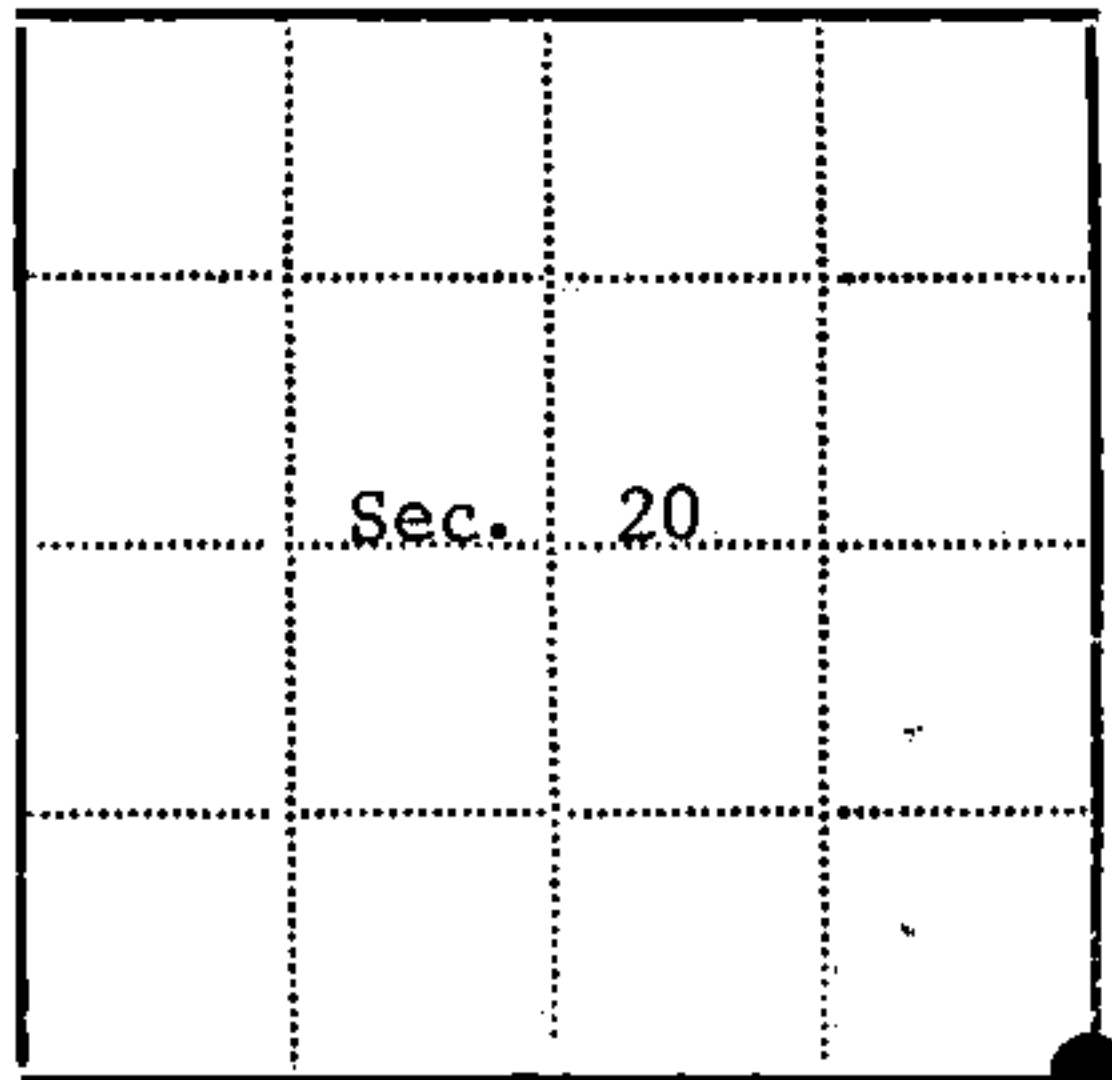
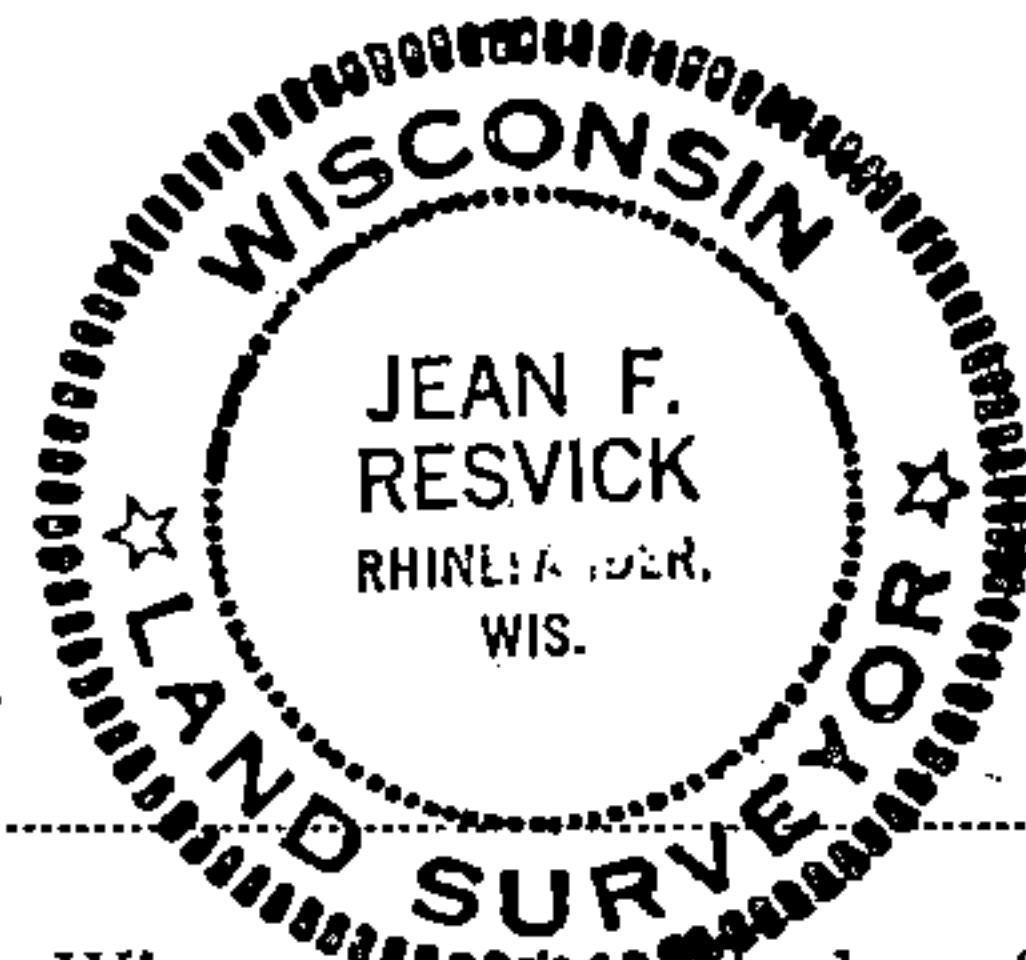
Surveyed in 1865 by Wm. E. Daugherty  
North between Sections 28 and 29. 80.0 chains set post corner to Sections 20, 21, 28 and 29  
W. pine, 15, N61°E, 10 lks.  
W. pine, 15, S34°W, 29 lks.

Description of corner evidence found:

W. pine stump 4 feet high, 16" diameter, charred face blaze with overgrowth and axe marks. Set a point S61°W, 10 lks. from this bearing tree. From the point set a W. pine stump 2 feet high, 16" diameter bears S34°W, 29 lks. No evidence of a post was found.

Description of monument and accessories I established to perpetuate the location of this corner:

At the corner position determined from the recorded bearings and distances of the recovered original bearing tree stump, set a 2 inch inside diameter, galvanized pipe, 3 feet long, filled with concrete with a brass cap stamped: T40N R13E, S20, S21, S28, S29, 1977, S-802. From which the following bear:  
Spruce, 11", N55°E, 26.57 feet  
Spruce, 6", S58°E, 15.25 feet  
Spruce, 6", S29°W, 25.03 feet  
Spruce 7", N30°W, 15.00 feet  
Set a steel sign post, West, 0.50 ft.



● - Corner monument restored  
□ -

Resident witnesses.....

Dated at Rhinelander Wisconsin, 1975 day of July 1975.

Signature Jean F. Resvick Title Land Surveyor  
(County Surveyor, Registered Land Surveyor, or other duly authorized official)

Surveyors Registration No. S-802 DOCUMENT NUMBER 113313

Office of Register of Deeds County of Forest

I hereby certify that the within instrument was filed in this office for record on the 13th day of February 1978, and was filed in Book No. Page No. of County Records.

Signature Eugene Staszynski Title Register of Deeds

Township 40 North, Range 13 East, Section 20, Index No. R-9, Page No.

U.S. PUBLIC LAND SURVEY MONUMENT RECORD

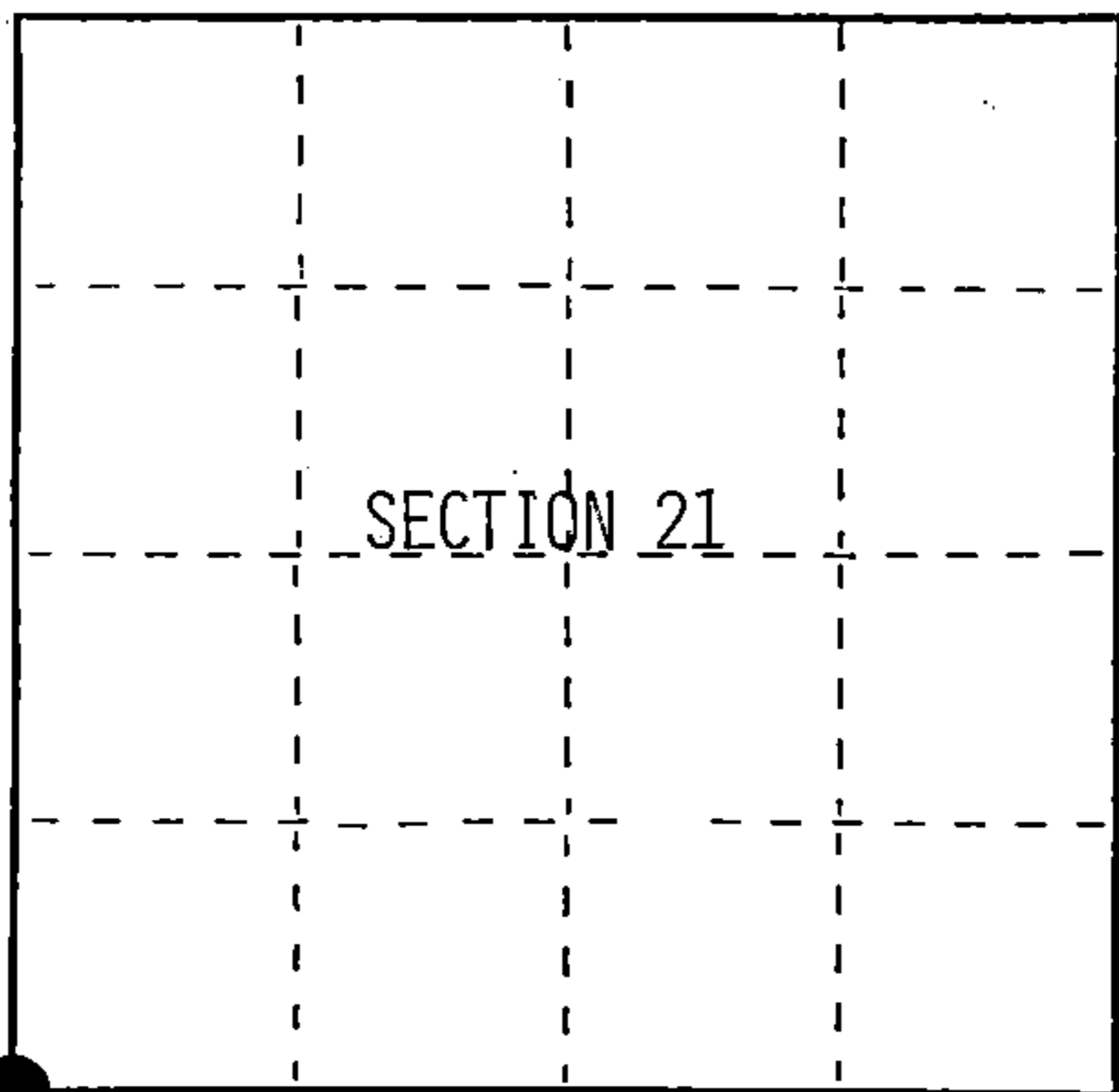
Index No. R-9

State of Wisconsin }  
 County of Forest } ss.

I, William B. Cochrane, do hereby certify that on the 27th day of June, 1991, I found evidence of the Southwest Section corner of Section 21 Township 40 North, Range 13 East, Fourth Principal Meridian, as described hereon; and that from this evidence I established a new monument and accessories as described hereon to perpetuate the original location of this corner.

Resident witnesses:

.....  
 .....  
 .....



○ = Corner monument restored.

History of original corner establishment:  
 Original Government Survey in 1865 by William E. Daugherty.

In 1975 Jean Resvick restored the corner position from original bearing tree evidence. From evidence, set a 2"x3' galvanized iron pipe with a brass cap stamped; T40N R13E, S20, S21, S28, S29, 1977, S-802. From which the following bear;

Spruce	7"	N30°W	15.00 feet
Spruce	11"	N55°E	26.57 feet
Spruce	6"	S38°E	15.25 feet
Spruce	6"	S29°W	25.03 feet

Description of corner evidence found: See Certified Land Corner Restoration Certificate #113313

Found monument as described above, in place, from which the following bear;

Spruce-Dead	11"	N55°E	26.57 feet
-------------	-----	-------	------------

Description of monument and accessories I established to perpetuate the original location of this corner.

Blazed and scribed the following new bearing trees;

W. Spruce	9"	S04°W	30.45 feet
B. Spruce	6"	S75°W	26.35 feet
B. Spruce	6"	N10°W	12.98 feet

Set- Steel Sign Post West 0.50 feet

Re-painted existing bearing tree.

Dated at Hiles, Wis., this 18th day of February, 1992

Signature *William B. Cochrane* Title Land Surveyor Registration No S-1107  
 (County Surveyor, Registered Land Surveyor, or other duly authorized official)

Office of Register of Deeds, County of Forest, I hereby certify that the within instrument was filed in this office for record on the 31st day of August, 1992 at 10:45 o'clock A.M.

*Paul Aschenbrenner*  
 (Register of Deeds)

By.....Deputy

FORM NO. 985-A

H.C. Miller Company

Stock No. 26273  
 DOCUMENT NUMBER  
 145373

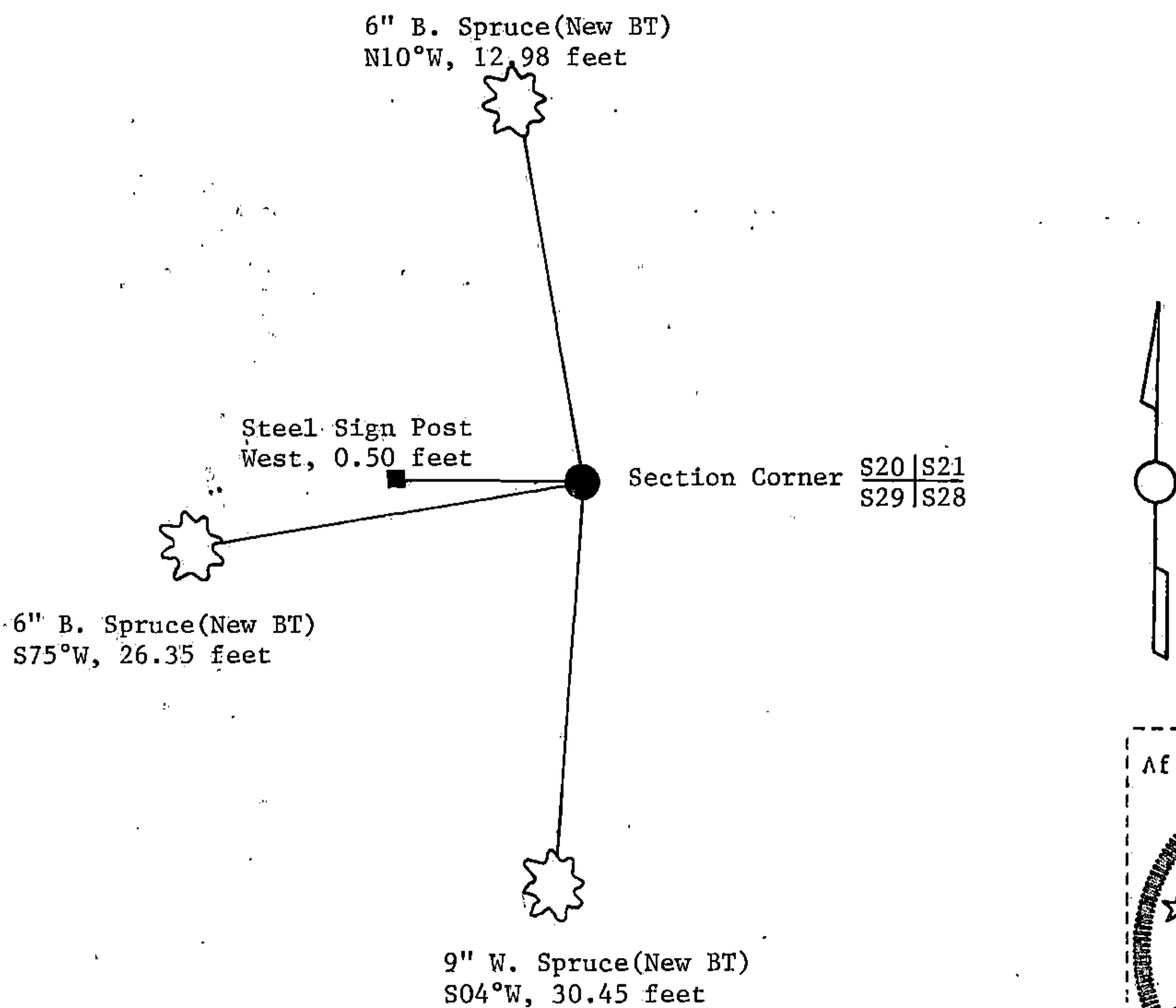
144013200000

(e) Describe any material discrepancy between the location of the corner as restored or reestablished and the location of that corner as previously restored or reestablished by distance and direction. Show the discrepancy on the plan view drawing under (d), above. Show the distances between the corner as previously restored or reestablished and (1) the corner as restored or reestablished, and (2) to at least 2 of the witness monuments shown on the drawing in (d), above.

(f) Was the corner restored through acceptance of (1) an obliterated evidence location, or, (2) a found perpetuated location?

Restored through acceptance of a found perpetuated location.

(g&h) Was the corner reestablished through lost corner proportionate methods? If so, show the method, including the directions and distances to other public land survey corners used as evidence or used for proportioning in determining the corner location?



(i) William B. Cochran  
 (type or print name) certify that the corner location shown on this record was determined by me or under my direction and control and that this U.S. Public Land Survey Monument Record is correct and complete to the best of my knowledge and belief.

William B. Cochran March 25, 1992  
 Signature Date

Survey requested by: Don Gordon 3/23/92  
 District Ranger Date