

CERTIFIED LAND CORNER RESTORATION

Index No. G-13

State of Wisconsin }
County of Forest } ss.

I James H. Moore, do hereby certify that on the 17th day of June, 19 96, I found evidence of the West Quarter corner of Section 10 Township 40 North, Range 13 East, Fourth Principal Meridian, as described hereon; and that from this evidence I established a new monument and accessories as described hereon to perpetuate the original location of this corner.

Resident witnesses:

Stuart Peterson

Steve Applekamp

History of original corner establishment:

Original government survey in 1865 by William E. Daugherty. North between Sections 9 and 10 at 40 chains, set quarter section post, from which the following bear:

Tamarack 8" S55°W 9 lks
Tamarack 8" N42°E 15 lks

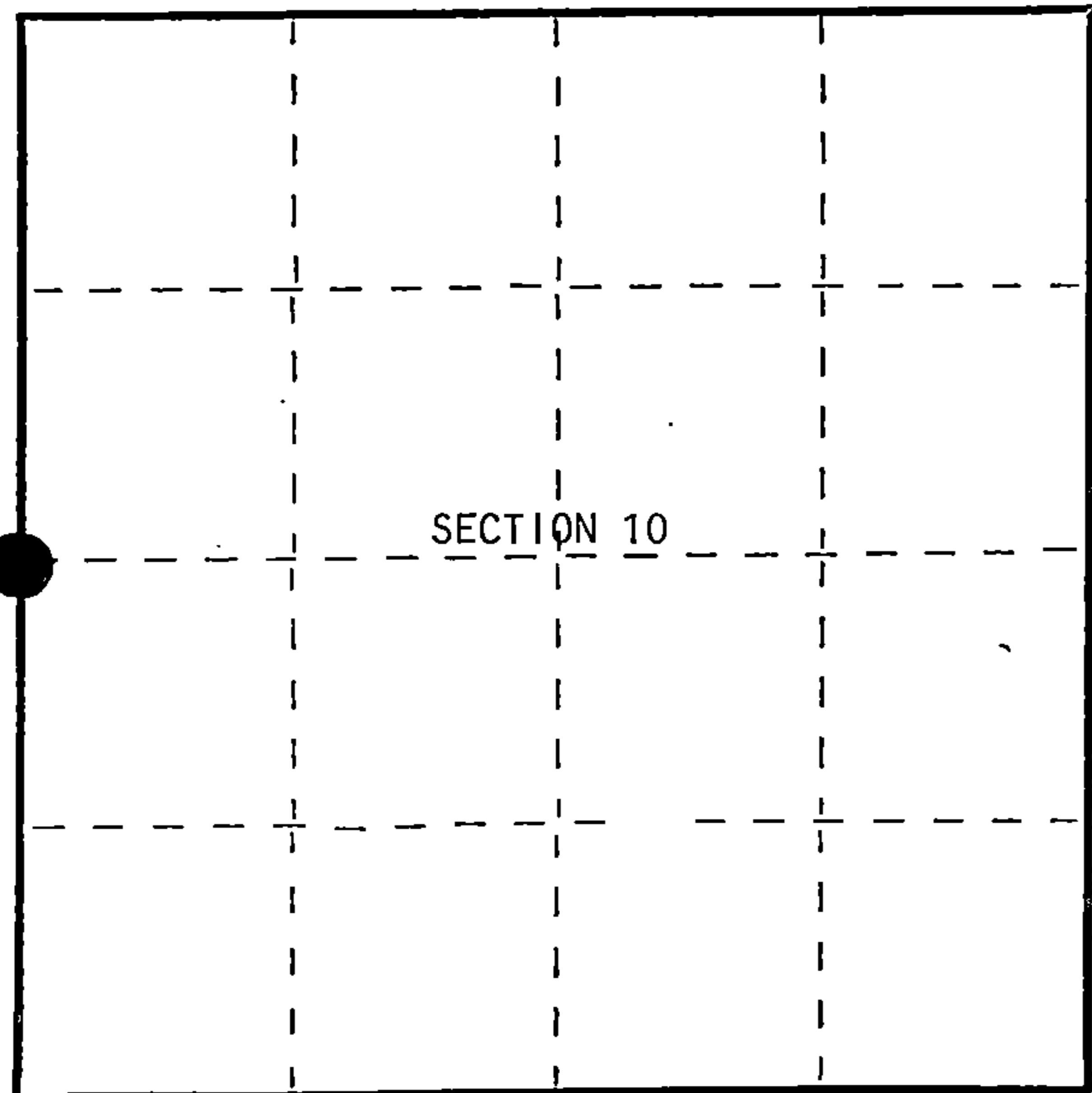
Description of corner evidence found:

No original corner evidence recovered found 2½" pipe set by the USFS in 1991 by Bill Cochran. I added two new bearing trees.

Description of monument and accessories I established to perpetuate the original location of this corner.

At corner position, found a 2½" diameter aluminum pipe monument, 3 feet long, 2½ feet in the ground, with an aluminum cap stamped: T40N, R13E, ¼, S9, S10, 1991, S-1107, from which following bear:

Black Spruce 10" N55°E 22.70 feet
Black Spruce 5" S14°E 28.41 feet
Tamarack 8" S44°W 44.50 feet
Black Spruce 7" N01°E 16.27 feet
Steel Sign Post - NW 0.39 feet



● = Corner monument restored.

Dated at Hiles, Wis., this 6th day of January, 1997

Signature James H. Moore Title Land Surveyor Registration No. S-1641
(County Surveyor, Registered Land Surveyor, or other duly authorized official)

Office of Register of Deeds, County of Forest, I hereby certify that the within instrument was filed in this office for record on the 17th day of December, 19 97 at 9:27 o'clock A M.

(Register of Deeds)
By Paul Tomkowiak Deputy

160522

FORM 985 H. C. MILLER CO., MILWAUKEE

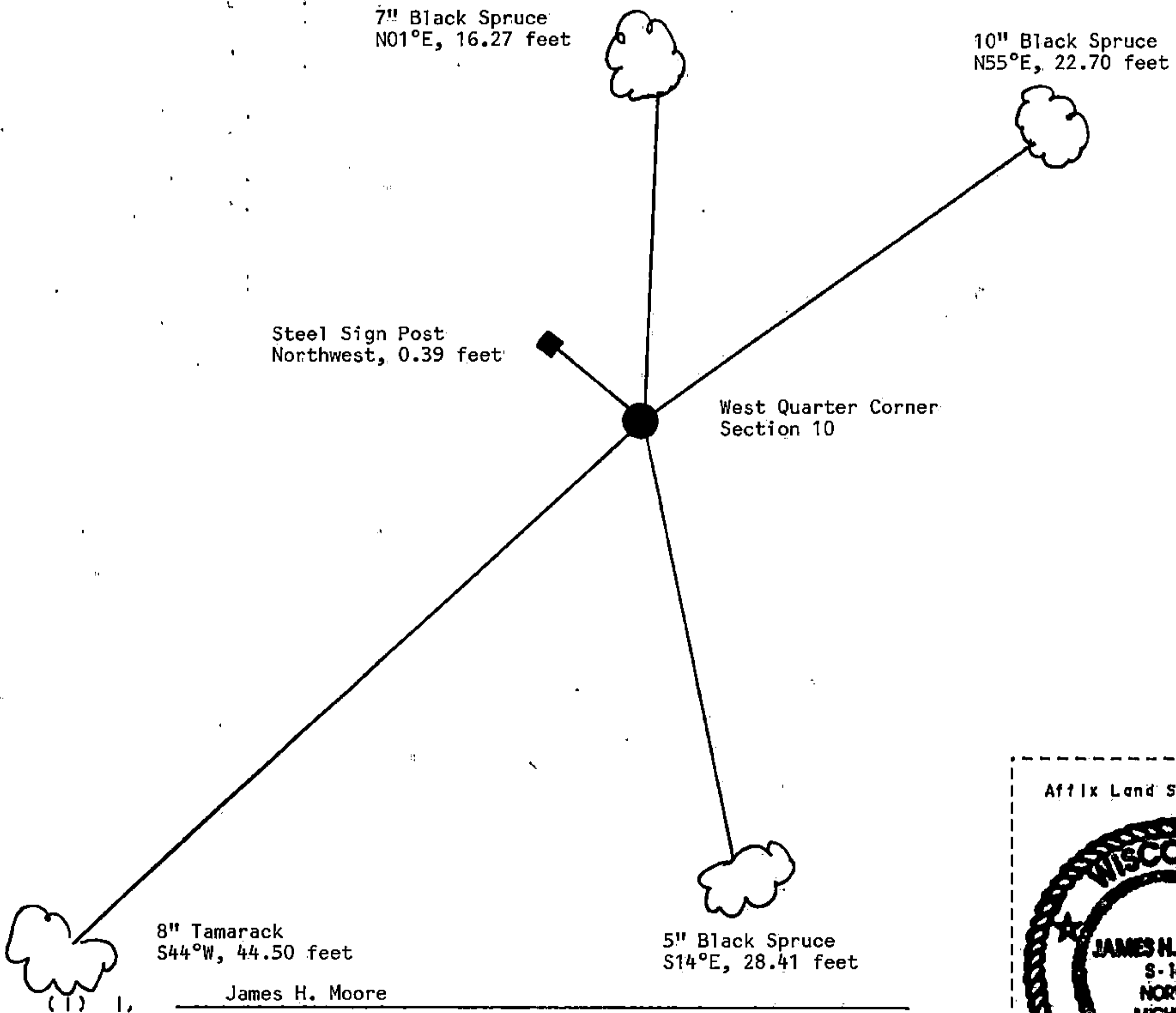
44013092000

(e) Describe any material discrepancy between the location of the corner as restored or reestablished and the location of that corner as previously restored or reestablished by distance and direction. Show the discrepancy on the plan view drawing under (d), above. Show the distances between the corner as previously restored or reestablished and (1) the corner as restored or reestablished, and (2) to at least 2 of the witness monuments shown on the drawing in (d), above.

See Sketch Below.

(f) Was the corner restored through acceptance of (1) an obliterated evidence location, or, (2) a found perpetuated location?

(g & h) Was the corner reestablished through lost corner proportionate methods? If so, show the method, including the directions and distances to other public land survey corners used as evidence or used for proportioning in determining the corner location?



(type or print name) certify that the corner location shown on this record was determined by me or under my direction and control and that this U.S. Public Land Survey Monument Record is correct and complete to the best of my knowledge and belief.

James H. Moore
Signature

January 6, 1997

Date

CERTIFICATE READY FOR FILING:

District Ranger

U.S. PUBLIC LAND SURVEY MONUMENT RECORD

Index No. G-13

State of Wisconsin }
County of Forest } ss.

History of original corner establishment:

Original Government Survey in 1865 by William E. Daugherty. North between Sections 9 and 10, at 40.00 chains, set Quarter Section Post, from which the following bear;

Tamarack	8"	S55°W	9 lks.
Tamarack	8"	N42°E	15 lks.

I, William B. Cochrane, do hereby certify that on the 22nd day of April, 1991, I found evidence of the East Quarter corner of Section 9 Township 40, North, Range 13 East, Fourth Principal Meridian, as described hereon; and that from this evidence I established a new monument and accessories as described hereon to perpetuate the original location of this corner.

Description of corner evidence found:

No corner evidence was recovered.

I re-established the corner position at mid-point and on line between the Northeast and Southeast Section Corners of Section 9.

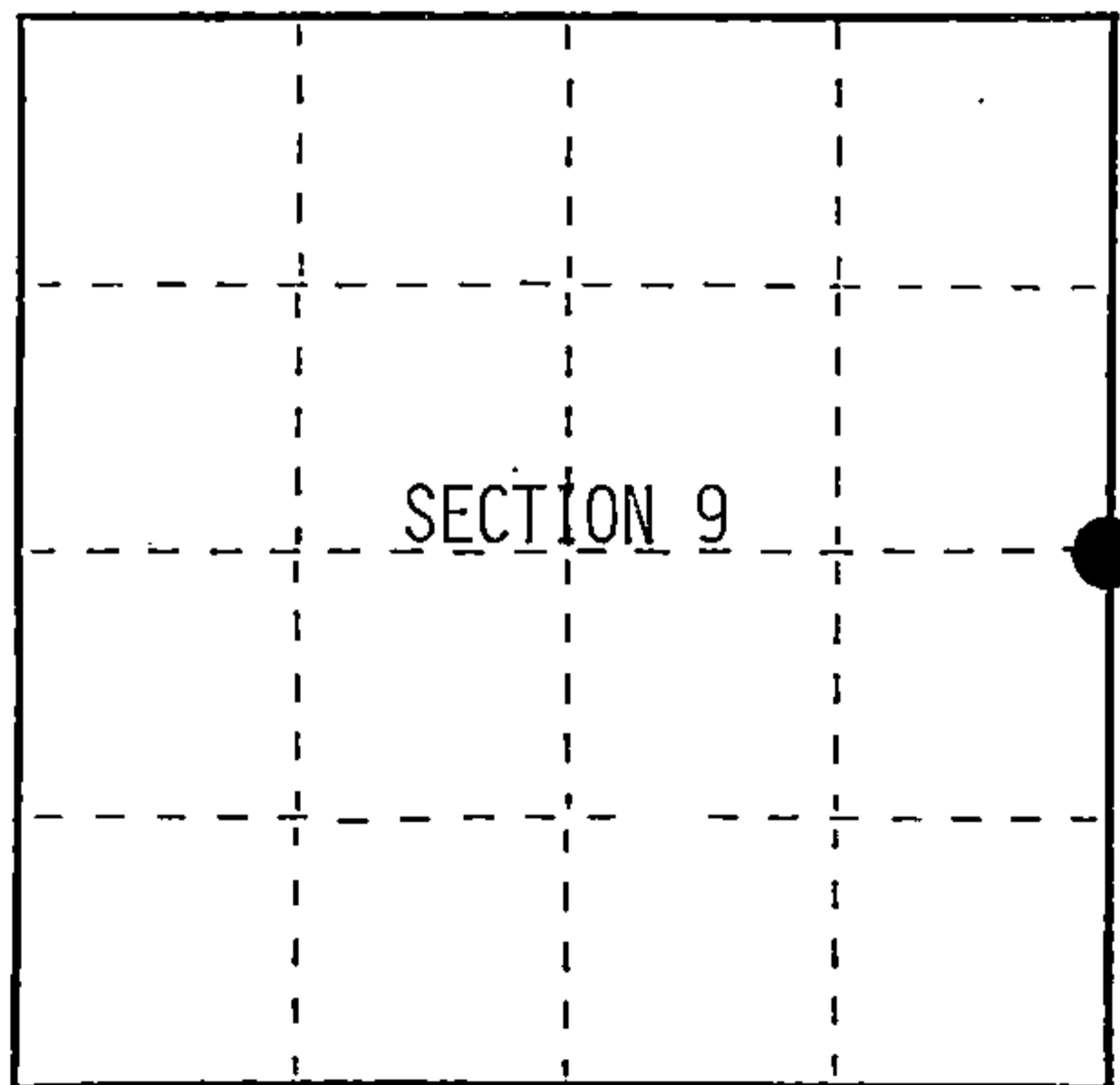
Resident witnesses:

.....
.....
.....

Description of monument and accessories I established to perpetuate the original location of this corner.

At the corner position, set a 2½ inch diameter aluminum pipe monument, 3 feet long, 2½ feet in the ground, with an aluminum cap stamped; T40N R13E, 1/4, S9, S10, 1991, S-1107. From which the following new blazed and scribed bearing trees bear;

Spruce	8"	N67°E	22.74 feet
Spruce	6"	N02°W	16.28 feet
Set- Steel Sign Post		NW	0.50 feet



○ = Corner monument restored.

Dated at Hiles, Wis., this 19th day of February, 1992

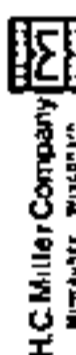
Signature William B. Cochrane Title Land Surveyor Registration No. S-1107
(County Surveyor, Registered Land Surveyor, or other duly authorized official)

Office of Register of Deeds, County of Forest, I hereby certify that the within instrument was filed in this office for record on the 31st day of August, 1992 at 10:15 o'clock A. M.

Paul Aschenbrenner
(Register of Deeds)

By _____ Deputy

FORM NO. 985-A



Stock No. 26273
DOCUMENT NUMBER

145354

44013092000

(e) Describe any material discrepancy between the location of the corner as restored or reestablished and the location of that corner as previously restored or reestablished by distance and direction. Show the discrepancy on the plan view drawing under (d), above. Show the distances between the corner as previously restored or reestablished and (1) the corner as restored or reestablished, and (2) to at least 2 of the witness monuments shown on the drawing in (d), above.

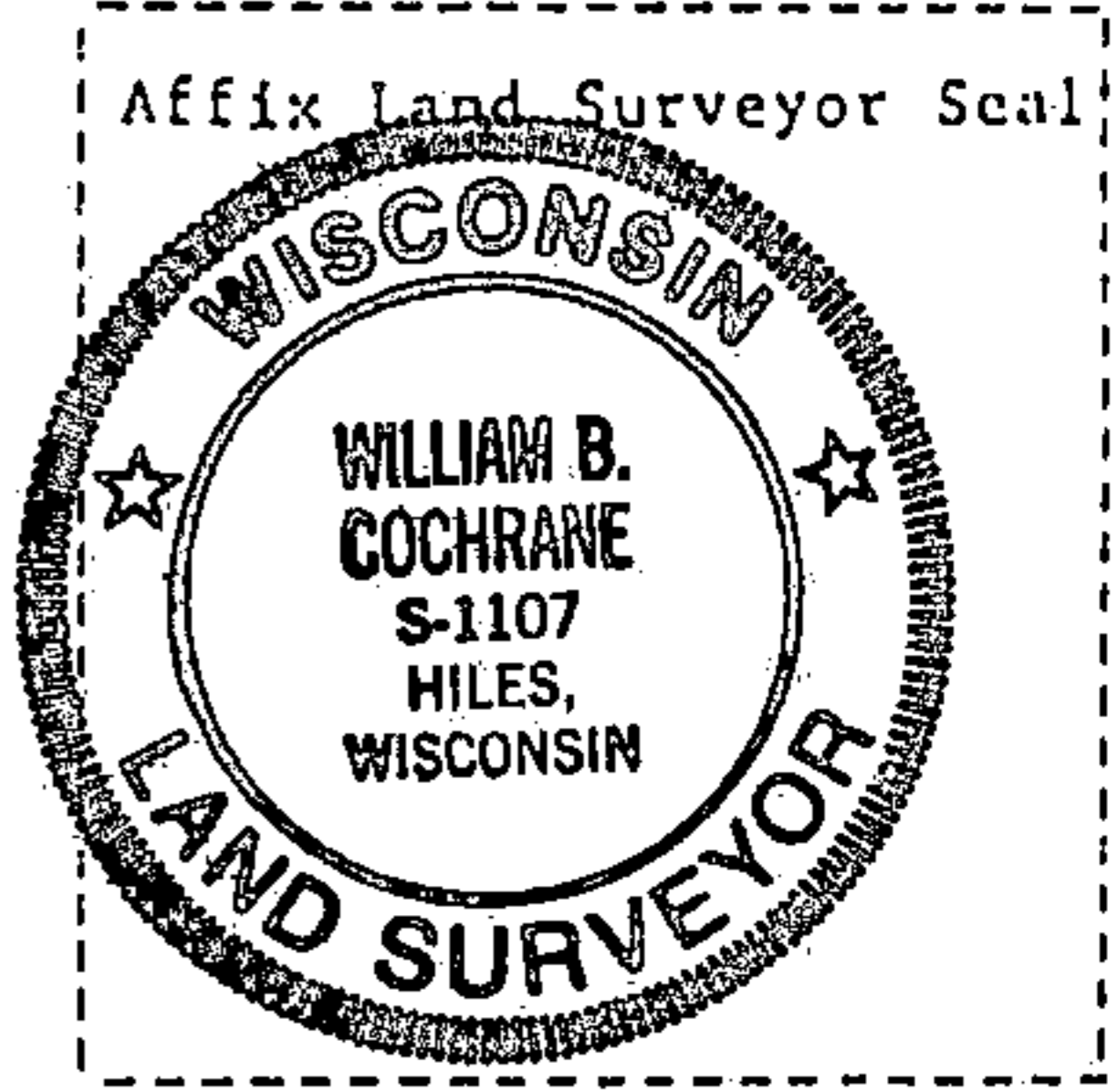
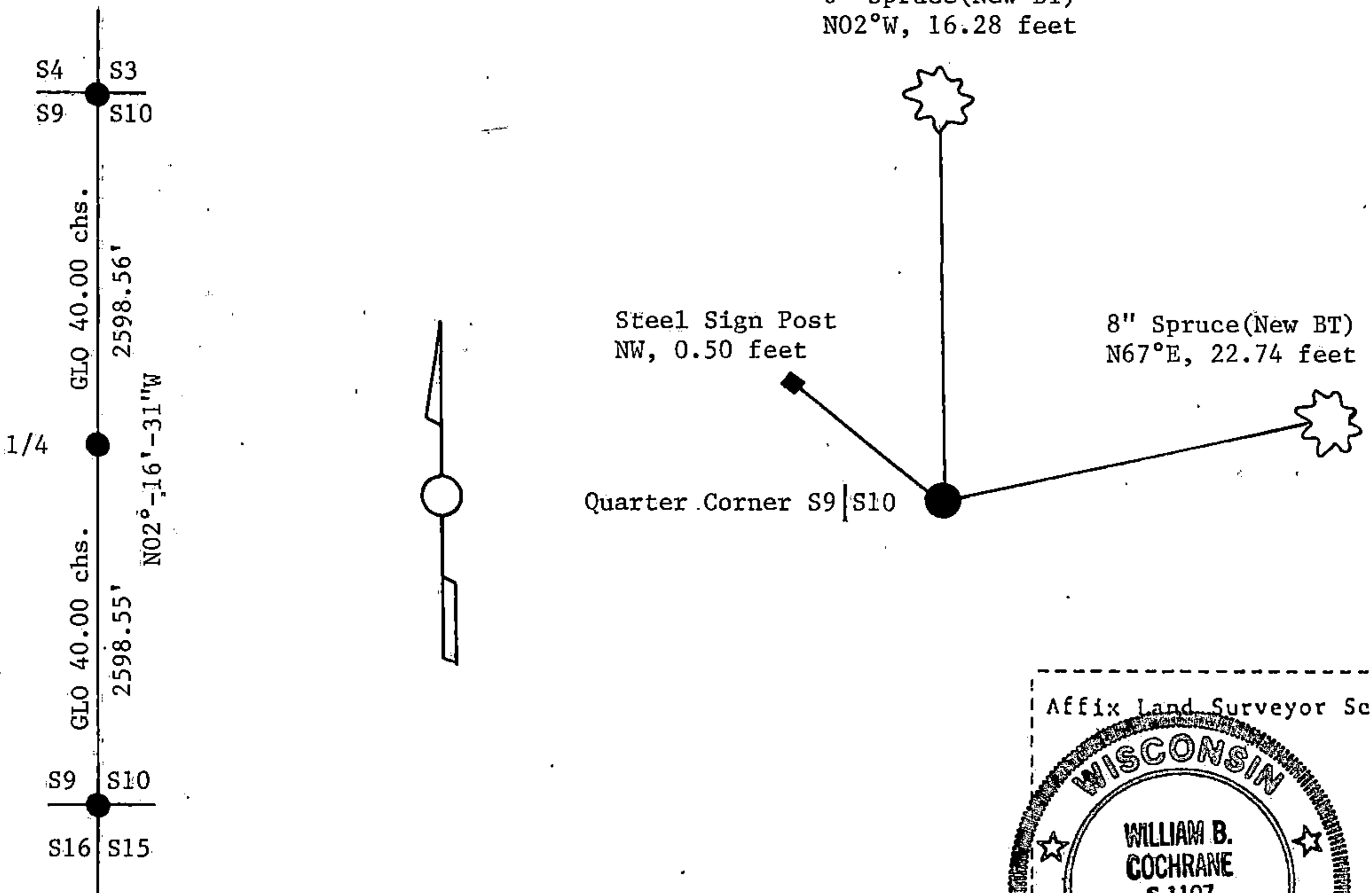
See drawing below.

(f) Was the corner restored through acceptance of (1) an obliterated evidence location, or, (2) a found perpetuated location?

(g&h) Was the corner reestablished through lost corner proportionate methods? If so, show the method, including the directions and distances to other public land survey corners used as evidence or used for proportioning in determining the corner location?

Re-established through lost corner proportionate methods.

6" Spruce (New BT)
N02°W, 16.28 feet



(i) William B. Cochrane
(type or print name) certify that the corner location shown on this record was determined by me or under my direction and control and that this U.S. Public Land Survey Monument Record is correct and complete to the best of my knowledge and belief.

William B. Cochrane March 25, 1992
Signature Date

Survey requested by; Pam Gordon 3/23/92
District Ranger Date