

U.S. PUBLIC LAND SURVEY MONUMENT RECORD

Index No. E-13

State of Wisconsin }
 County of Forest } ss.

I, William B. Cochrane, do hereby certify that on the 31st day of October, 1991, I found evidence of the Northeast Section corner of Section 9 Township 40, North, Range 13 East, Fourth Principal Meridian, as described hereon; and that from this evidence I established a new monument and accessories as described hereon to perpetuate the original location of this corner.

Resident witnesses:

.....

.....

.....

History of original corner establishment:

Original Government Survey in 1865 by William E. Daugherty. North between Sections 9 and 10, at 80.00 chains, set Section Corner Post to Sections 3, 4, 9 and 10, from which the following bear;

Spruce	10"	N33°E	10 lks.
Spruce	8"	S74°W	18 lks.

Description of corner evidence found:

No original corner evidence was recovered.

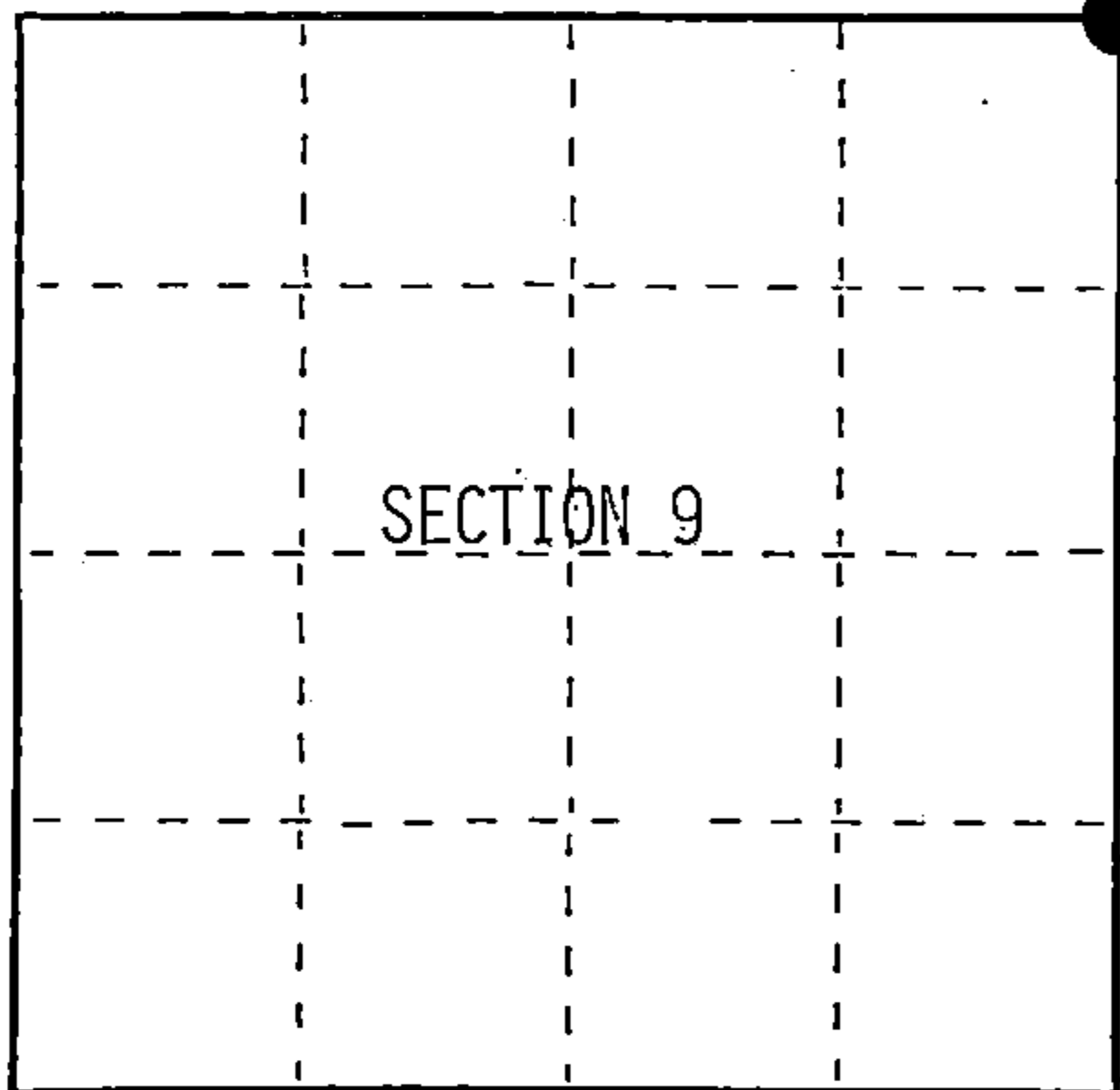
Old Highway Plans call for a wood post at the intersection of Highway 70 and Forest Road #2458.

I accept the intersection as the best available evidence for restoring the corner position.

Description of monument and accessories I established to perpetuate the original location of this corner.

At the intersection, set a railroad spike flush with the surface of Highway 70, from which the following new blazed and scribed bearing trees bear;

W. Pine	13"	N33°E	126.90 feet
W. Pine	15"	S47°E	89.63 feet
Reference Monument		S08°E	64.50 feet
W. Pine	13"	N46°W	110.85 feet



○ = Corner monument restored.

Dated at Hiles, Wis., this 19th day of February, 1992

Signature William B. Cochrane Title Land Surveyor Registration No. S-1107
 (County Surveyor, Registered Land Surveyor, or other duly authorized official)

Office of Register of Deeds, County of Forest, I hereby certify that the within instrument was filed in this office for record on the 31st day of August, 1992 at 10:15 o'clock A. M.

Paul Aschenbrenner
 (Register of Deeds)

By..... Deputy

FORM NO. 985-A

H.C. Miller Company

Stock No. 26273
 DOCUMENT NUMBER
 145352

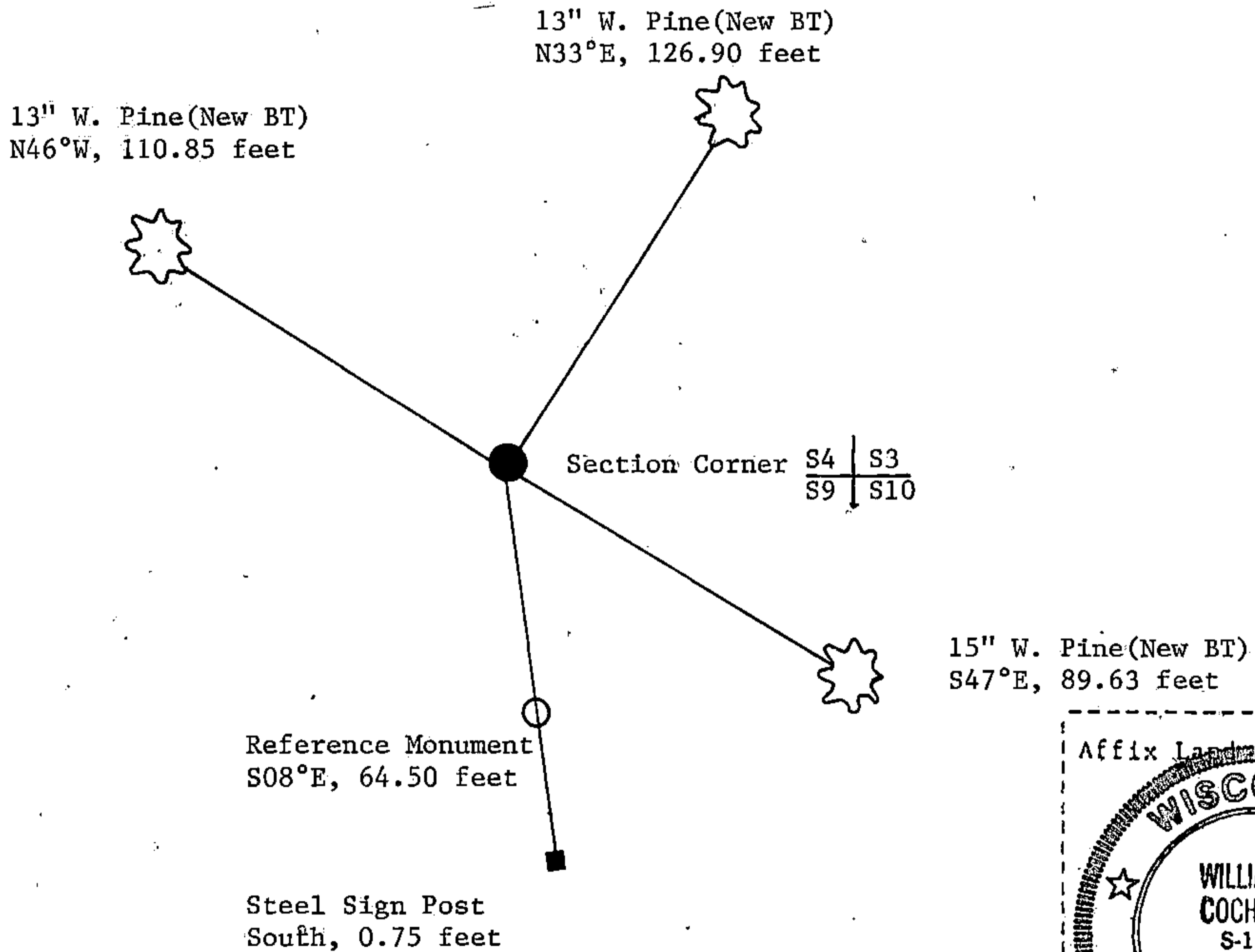
44013040000

(e) Describe any material discrepancy between the location of the corner as restored or reestablished and the location of that corner as previously restored or reestablished by distance and direction. Show the discrepancy on the plan view drawing under (d), above. Show the distances between the corner as previously restored or reestablished and (1) the corner as restored or reestablished, and (2) to at least 2 of the witness monuments shown on the drawing in (d), above.

(f) Was the corner restored through acceptance of (1) an obliterated evidence location, or, (2) a found perpetuated location?

Restored from accepted evidence.

(g&h) Was the corner reestablished through lost corner proportionate methods? If so, show the method, including the directions and distances to other public land survey corners used as evidence or used for proportioning in determining the corner location?



(i) I, William B. Cochrane
(type or print name) certify that the corner location shown on this record was determined by me or under my direction and control and that this U.S. Public Land Survey Monument Record is correct and complete to the best of my knowledge and belief.

William B. Cochrane May 4, 1992
Signature Date

Survey requested by: Pam Gardie May 4, 1992
District Ranger Date