

U.S. PUBLIC LAND SURVEY MONUMENT RECORD

Index No. A-17

State of Wisconsin }  
County of Forest } ss.

History of original corner establishment:

Original Government Survey in 1865 by William E. Daugherty. North between Sections 2 and 3, at 81.30 chains, intersect 4th Correction Line, 32.00 chains East of the Standard Corner to Sections 34 and 35, T41N R13E. At the corner position, set a Wood Post, from which the following bear;

Hemlock	13"	S62°E	33 lks.
Hemlock	10"	S63°W	40 lks.

Description of corner evidence found:

No corner evidence recovered.

The corner position is re-established at proportionate distance and on line between the Standard Corner to Sections 34 and 35 and the Standard Quarter Section Corner of Section 35, T41N R13E.

Description of monument and accessories I established to perpetuate the original location of this corner.

At the corner position, set a 2½ inch diameter aluminum pipe monument, 3 feet long, 3½ feet in the ground( 6 inches below the road surface), with an aluminum cap stamped; T41N R13E, S35, S2, S3, CC, T40N, 1986, S-1107. From which the following new blazed and scribed bearing trees bear;

Maple	9"	S10°E	50.48 feet
Maple	13"	S23°W	38.69 feet
Steel Sign Post		North	16.21 feet

Dated at Hiles, Wis., this 28th day of October, 1986

Signature William B. Cochran Title Land Surveyor Registration No. S-1107  
(County Surveyor, Registered Land Surveyor, or other duly authorized official)

Office of Register of Deeds, County of Forest, I hereby certify that the within instrument was filed in this office for record on the 24th day of February, 1987 at 2:00 o'clock P. M.

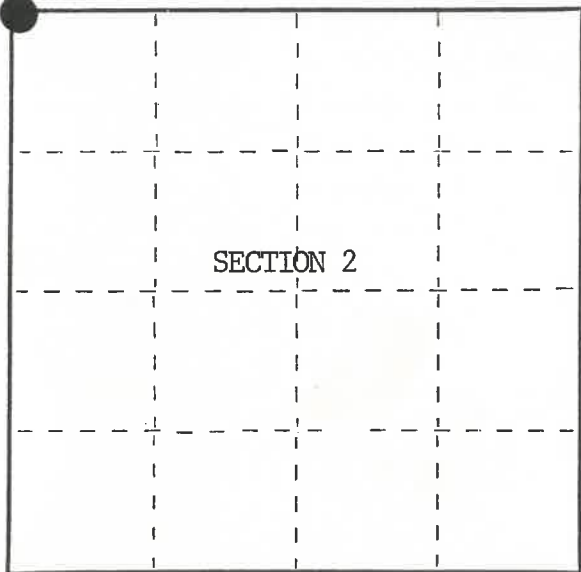
Paul Achenbrenner  
(Register of Deeds)

By.....Deputy

I, William B. Cochran, do hereby certify that on the 11th day of August, 1986, I found evidence of the Northwest Closing Section corner of Section 2 Township 40, North, Range 13 East, Fourth Principal Meridian, as described hereon; and that from this evidence I established a new monument and accessories as described hereon to perpetuate the original location of this corner.

Resident witnesses:

Tony Tillman



○ = Corner monument restored.

REGISTERS OFFICE  
Forest County, Wis.

Received for record this 24th day of February, A.D., 1987 at 2:00 o'clock P. M. and recorded in Vol. CORNER RESTORATIONS page A-17  
Paul Achenbrenner  
Register of Deeds

FORM NO. 985-A



Stock No. 26273

DOCUMENT NUMBER  
**132163**

44013034000

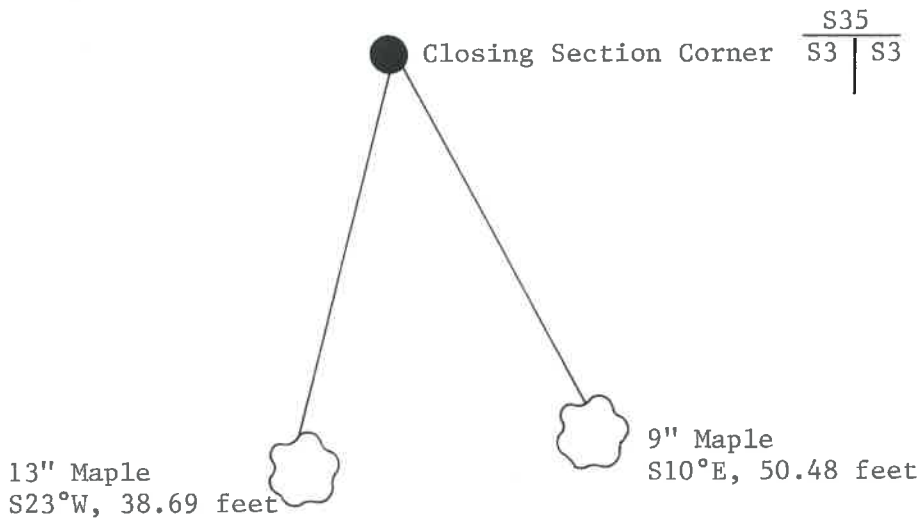
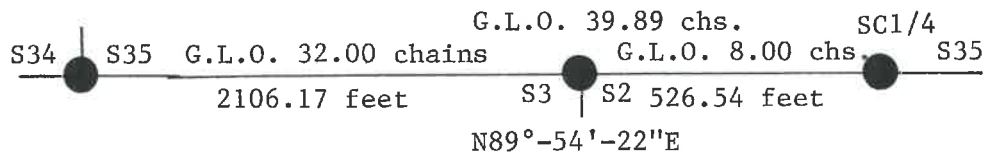
SEE ALSO 7-17 T41-213

(e) Describe any material discrepancy between the location of the corner as restored or reestablished and the location of that corner as previously restored or reestablished by distance and direction. Show the discrepancy on the plan view drawing under (d), above. Show the distances between the corner as previously restored or reestablished and (1) the corner as restored or reestablished, and (2) to at least 2 of the witness monuments shown on the drawing in (d), above.

See drawing below.

(f) Was the corner restored through acceptance of (1) an obliterated evidence location, or, (2) a found perpetuated location?

(g&h) Was the corner reestablished through lost corner proportionate methods? If so, show the method, including the directions and distances to other public land survey corners used as evidence or used for proportioning in determining the corner location?  
 Re-established through lost corner proportionate methods.



(i) I, William B. Cochrane  
 (type or print name) certify that the corner location shown on this record was determined by me or under my direction and control and that this U.S. Public Land Survey Monument Record is correct and complete to the best of my knowledge and belief.

William B. Cochrane      November 5, 1986  
 Signature      Date

Certificate ready for filing: N. Frank Healy      1/6/87  
 District Ranger      Date