

CERTIFIED LAND CORNER RESTORATION

83251

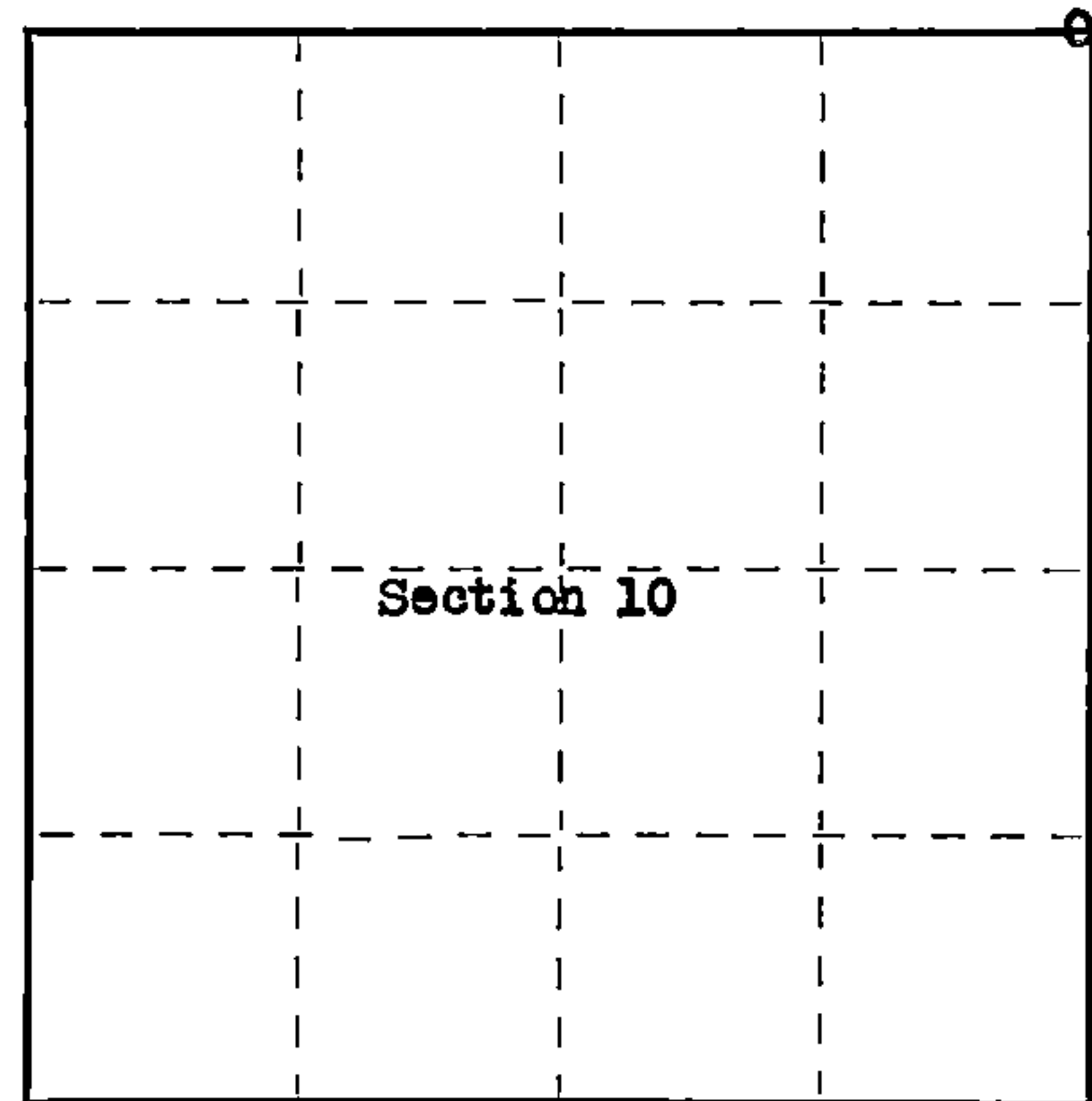
Index No. 203

State of Wisconsin }  
County of Forest } ss.

I Robert E. Badow, do hereby certify that on the 10th day of November, 1959, I found evidence of the North-East corner of Section 10 Township 40, North, Range 13 East, Fourth Principal Meridian, as described hereon; and that from this evidence I established a new monument and accessories as described hereon to perpetuate the original location of this corner.

Resident witnesses:

.....  
.....  
.....



○ = Corner monument restored.

History of original corner establishment:

Original corner established in 1862 and 1865 by William E. Dougherty, Government Deputy Surveyor  
Sugar 18" N72°W 24 lks.  
Birch 12" S70°E 22 lks.

Description of corner evidence found:

Original Birch bearing tree in good condition.  
Evidence of old 4"x4" post.



Description of monument and accessories I established to perpetuate the original location of this corner.

Set 2"x5' Galvanized iron pipe filled with concrete, capped with bronze cap and stamped as follows:

T40N R13E  
S3|S2  
S10|S11  
1959

RLS No. S-104

Blazed and scribed the following bearing trees: Yellow Birch 20" S70°E 14.5 feet (originally 12")  
Maple 12" N19°30'W 37.3 feet  
Maple 15" S35°30'W 20.1 feet

Benisot Engineering Co.

Dated at Rhineland, Wis., this 30th day of November, 1959.

Signature Robert E. Badow Title Registered Land Surveyor Registration No. S-104  
(County Surveyor, Registered Land Surveyor, or other duly authorized official)

Office of Register of Deeds, County of Forest, I hereby certify that the within instrument was filed in this office for record on the 21st day of March, 1960 at 9:00 o'clock A. M.

Anna Peterson  
(Register of Deeds)

By \_\_\_\_\_ Deputy

Subscribed and sworn to before me this 4th day of December 1959. Jessie C. Kelly Notary Public, Oneida Co., Wis. My Commission expires May 1, 1960

44013030000

U.S. PUBLIC LAND SURVEY MONUMENT RECORD

Index No. E-17

State of Wisconsin }  
County of Forest } ss.

I, William B. Cochran, do hereby certify that on the 14th day of August, 1986, I found evidence of the Southeast Section corner of Section 3 Township 40 North, Range 13 East, Fourth Principal Meridian, as described hereon; and that from this evidence I established a new monument and accessories as described hereon to perpetuate the original location of this corner.

Resident witnesses:

David Brownell

Tony Tillman

History of original corner establishment:

Original Government Survey in 1865 by William E. Daugherty. North between Sections 10 and 11, 80.00 chains, set Section Corner Post, from which the following bear; Sugar, 18", N72°W, 26 lks., Birch, 12", S70°E, 22 lks. On November 10th, 1959, Robert Bandow, R.L.S. #104, found original Birch bearing tree. At a point, N70°W, 22 lks. from Birch, set a 2"x5' galvanized iron pipe, with a bronze cap stamped; T40N R13E, S2, S3, S10, S11, 1959, RLS No. S-104. From which the following bear;

Y. Birch(Original)	20"	S70°E	14.52 feet
Maple	12"	N19°30'W	37.30 feet
Maple	15"	S35°30'W	20.10 feet

Description of corner evidence found:

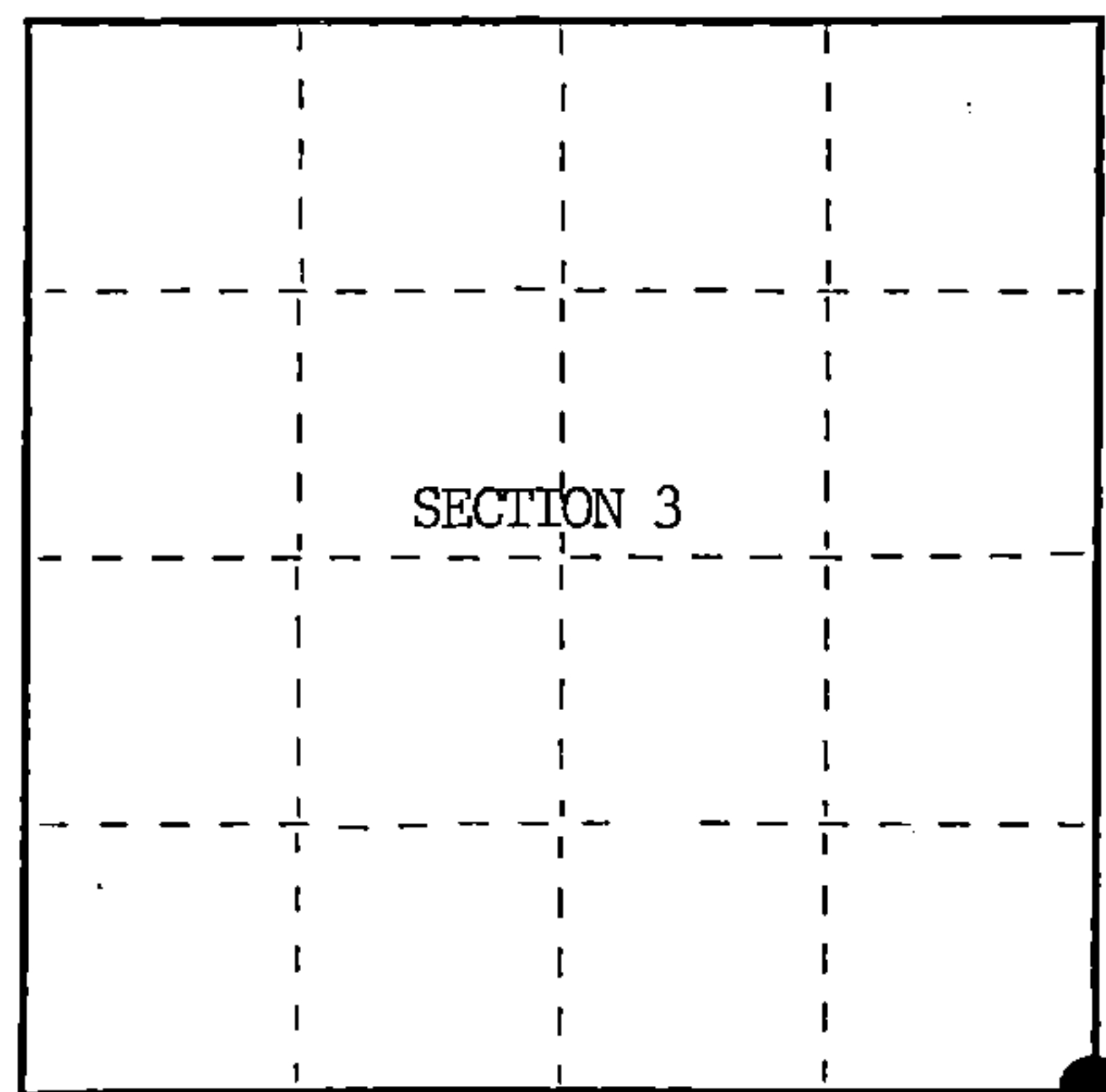
Found monument as described and in place, from which the following bear;

Y. Birch	20"	S70°E	14.52 feet
Maple	22"	S35°30'W	20.10 feet
Maple	20"	N19°30'W	37.30 feet
Steel Sign Post		NE	1.00 feet

Description of monument and accessories I established to perpetuate the original location of this corner.

Blazed and scribed a new bearing tree;

Maple	10"	N37°E	39.43 feet
-------	-----	-------	------------



○ = Corner monument restored.

Dated at Hiles, Wis., this 8th day of October, 1986

Signature *William B. Cochran* Title Land Surveyor Registration No. S-1107  
(County Surveyor, Registered Land Surveyor, or other duly authorized official)

Office of Register of Deeds, County of Forest, I hereby certify that the within instrument was filed in this office for record on the 11th day of March, 1987 at 3:30 o'clock P.M.

*Paul Achenbrenner*  
(Register of Deeds)

By Deputy

FORM NO. 985-A

H.C. Miller Company

Stock No. 26273

DOCUMENT NUMBER 132418

44013030000

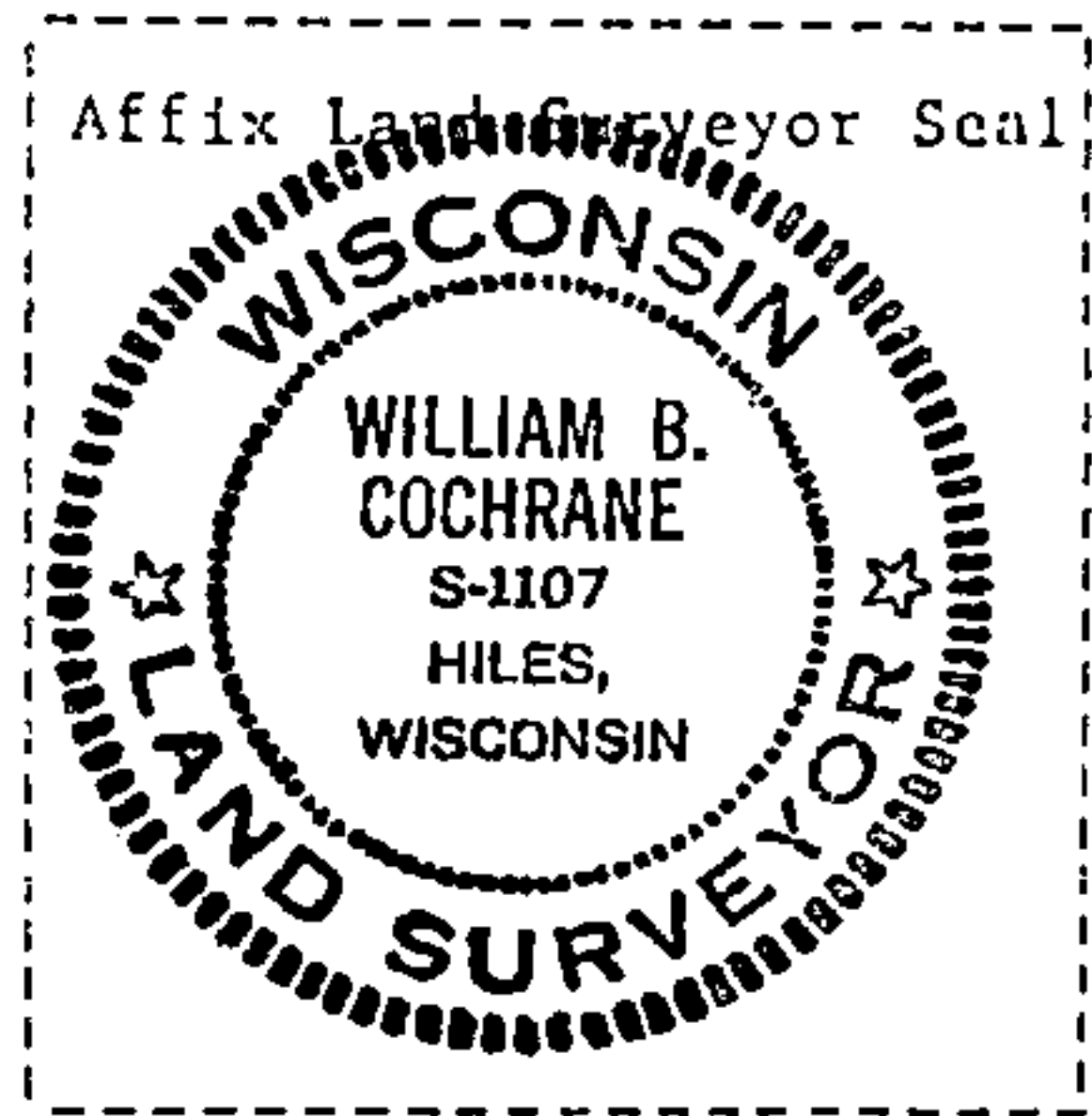
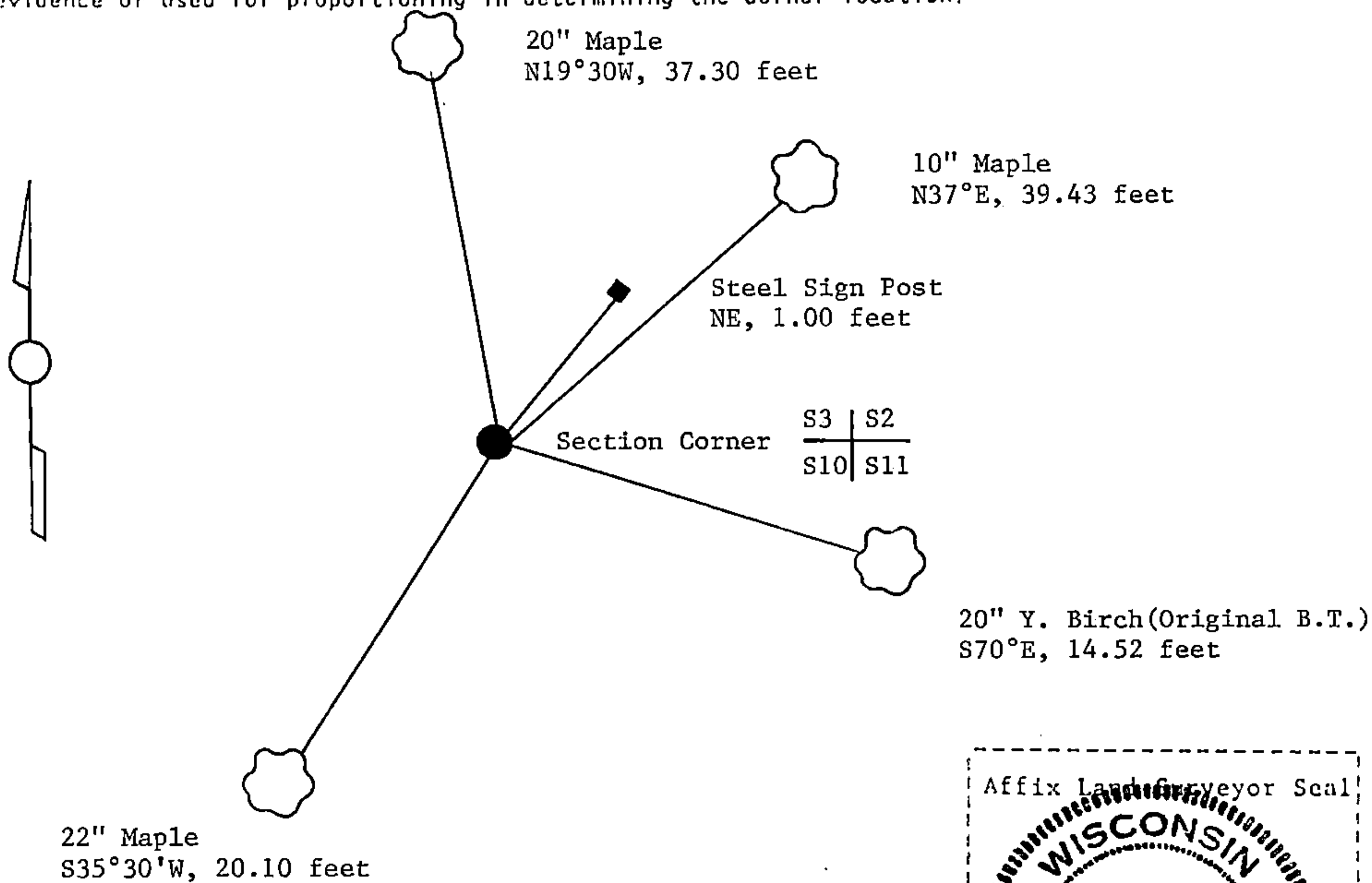
(e) Describe any material discrepancy between the location of the corner as restored or reestablished and the location of that corner as previously restored or reestablished by distance and direction. Show the discrepancy on the plan view drawing under (d), above. Show the distances between the corner as previously restored or reestablished and (1) the corner as restored or reestablished, and (2) to at least 2 of the witness monuments shown on the drawing in (d), above.

See drawing below.

(f) Was the corner restored through acceptance of (1) an obliterated evidence location, or, (2) a found perpetuated location?

Restored through acceptance of a found perpetuated location.

(g&h) Was the corner reestablished through lost corner proportionate methods? If so, show the method, including the directions and distances to other public land survey corners used as evidence or used for proportioning in determining the corner location?



(i) I, William B. Cochrane  
 (type or print name) certify that the corner location shown on this record was determined by me or under my direction and control and that this U.S. Public Land Survey Monument Record is correct and complete to the best of my knowledge and belief.

William B. Cochrane October 14, 1986  
 Signature Date

Certificate ready for filing: [Signature] 3-9-87  
 District Ranger Date