

U.S. PUBLIC LAND SURVEY MONUMENT RECORD

Index No. C-21

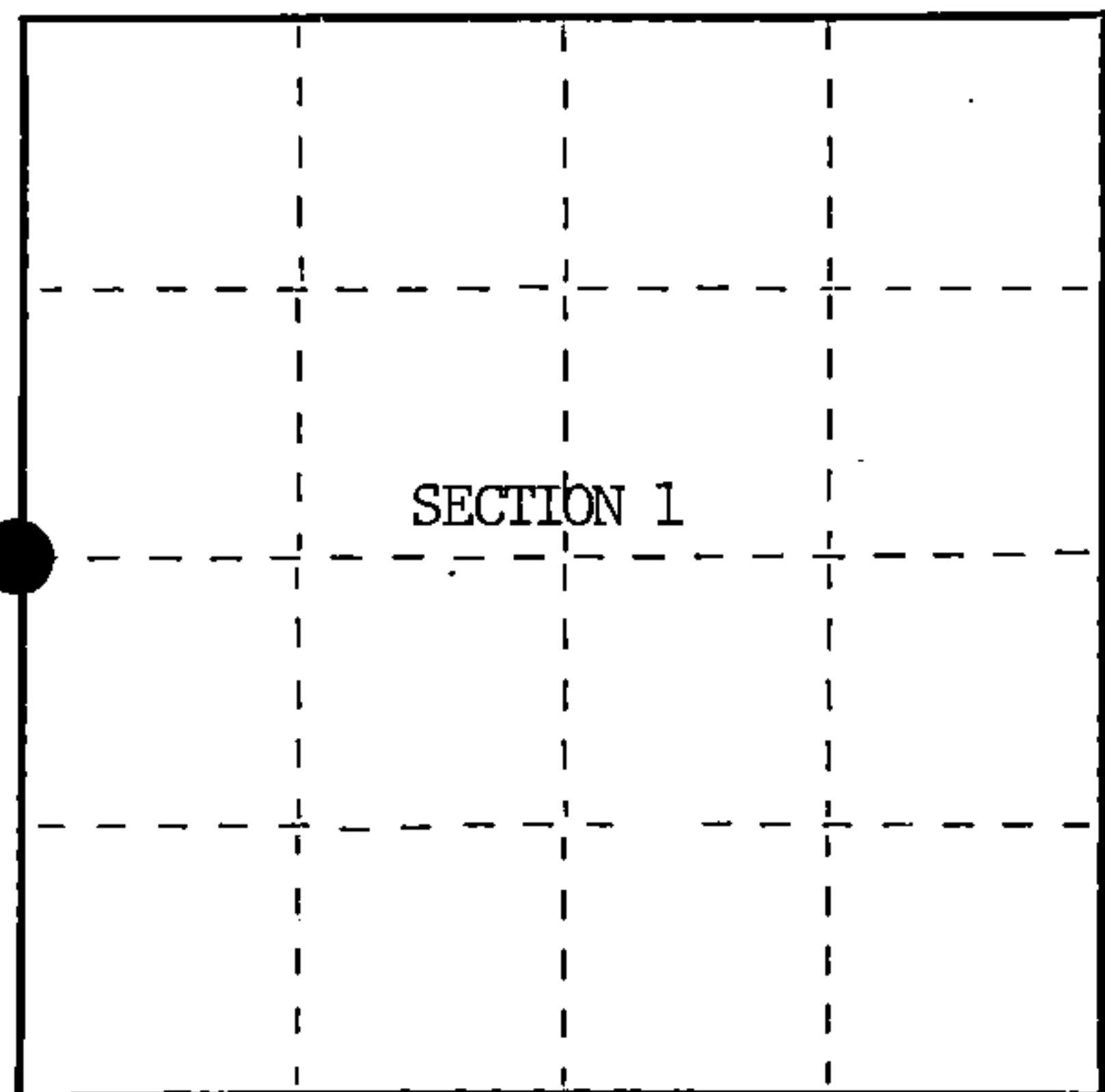
State of Wisconsin }
County of Forest } ss.

I, William B. Cochran, do hereby certify that on the 1st day of May, 1985, I found evidence of the West Quarter corner of Section 1 Township 40 North, Range 13 East, Fourth Principal Meridian, as described hereon; and that from this evidence I established a new monument and accessories as described hereon to perpetuate the original location of this corner.

Resident witnesses:

David Brownell

Tony Tillman



○ = Corner monument restored.

History of original corner establishment:

Original Government Survey in 1865 by William E. Daugherty. North between Sections 1 and 2, 40.00 chains, set Quarter Section Post to Sections 1 and 2, from which the following bear;

Cedar	10"	N23°W	7 lks.
Spruce	8"	S 7°E	9 lks.

Description of corner evidence found:

No corner evidence is recovered.

The corner position is re-established at proportionate distance and on line between the Northwest and Southwest Section Corners of Section 1.

Description of monument and accessories I established to perpetuate the original location of this corner.

At the corner position, set a 2½ inch diameter aluminum pipe monument, 5 feet long, 4 feet in the ground, with an aluminum cap stamped; T40N R13E, S1, S2, 1/4, 1985, S-1107. From which the following new blazed and scribed bearing trees bear;

Spruce	7"	S 8°E	5.65 feet
Spruce	5"	S86°W	4.36 feet
Steel Sign Post		NE	1.50 feet

Dated at Hiles, Wis., this 12th day of October, 1986.

Signature *William B. Cochran* Title Land Surveyor Registration No. S-1107
(County Surveyor, Registered Land Surveyor, or other duly authorized official)

Office of Register of Deeds, County of Forest. I hereby certify that the within instrument was filed in this office for record on the 11th day of March, 1987 at 3:30 o'clock P.M.

Paul Achenbrenner
(Register of Deeds)

By _____ Deputy

FORM NO. 985-A

H.C. Miller Company

Stock No. 26273

DOCUMENT NUMBER 132416

441013027000

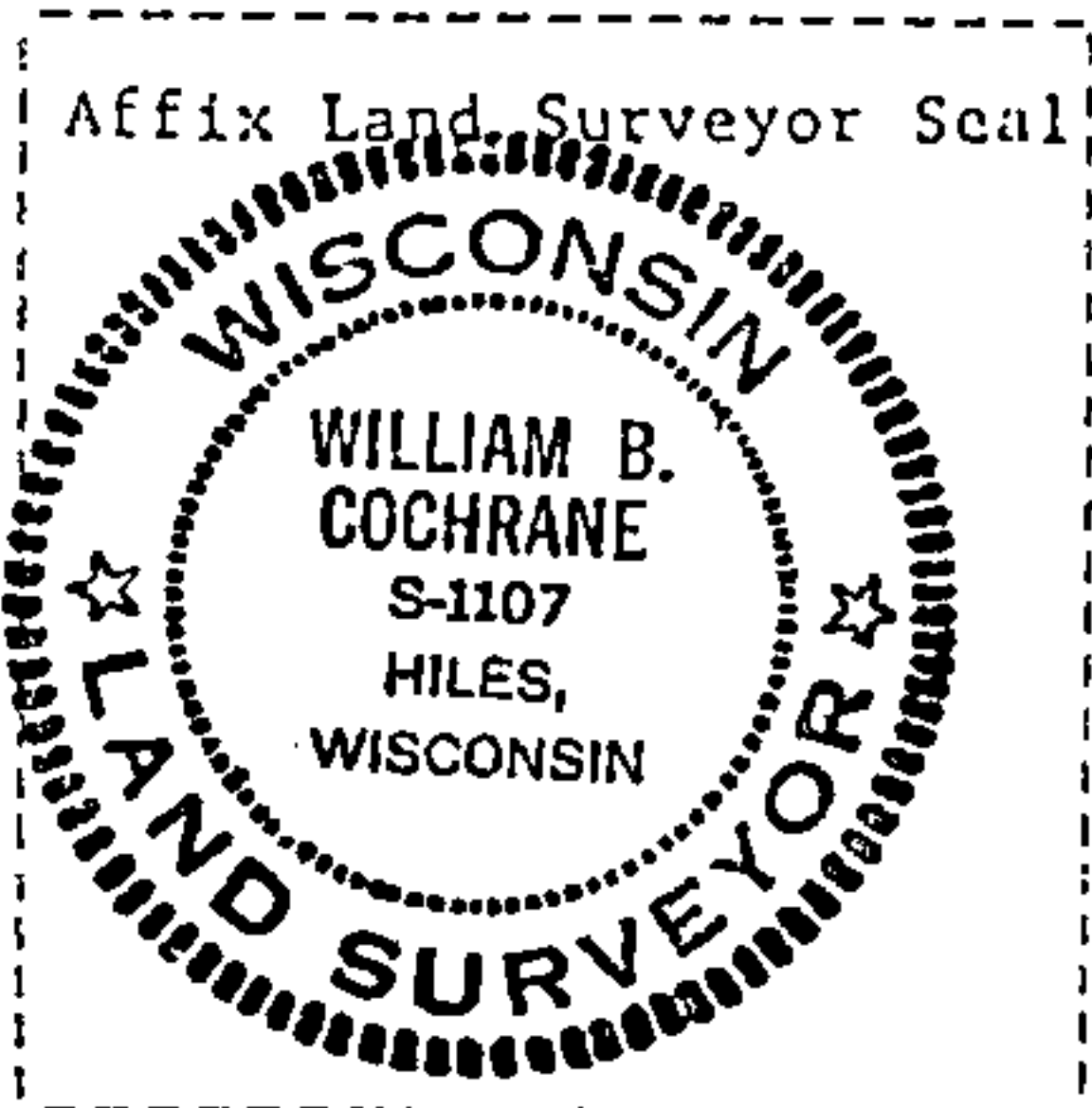
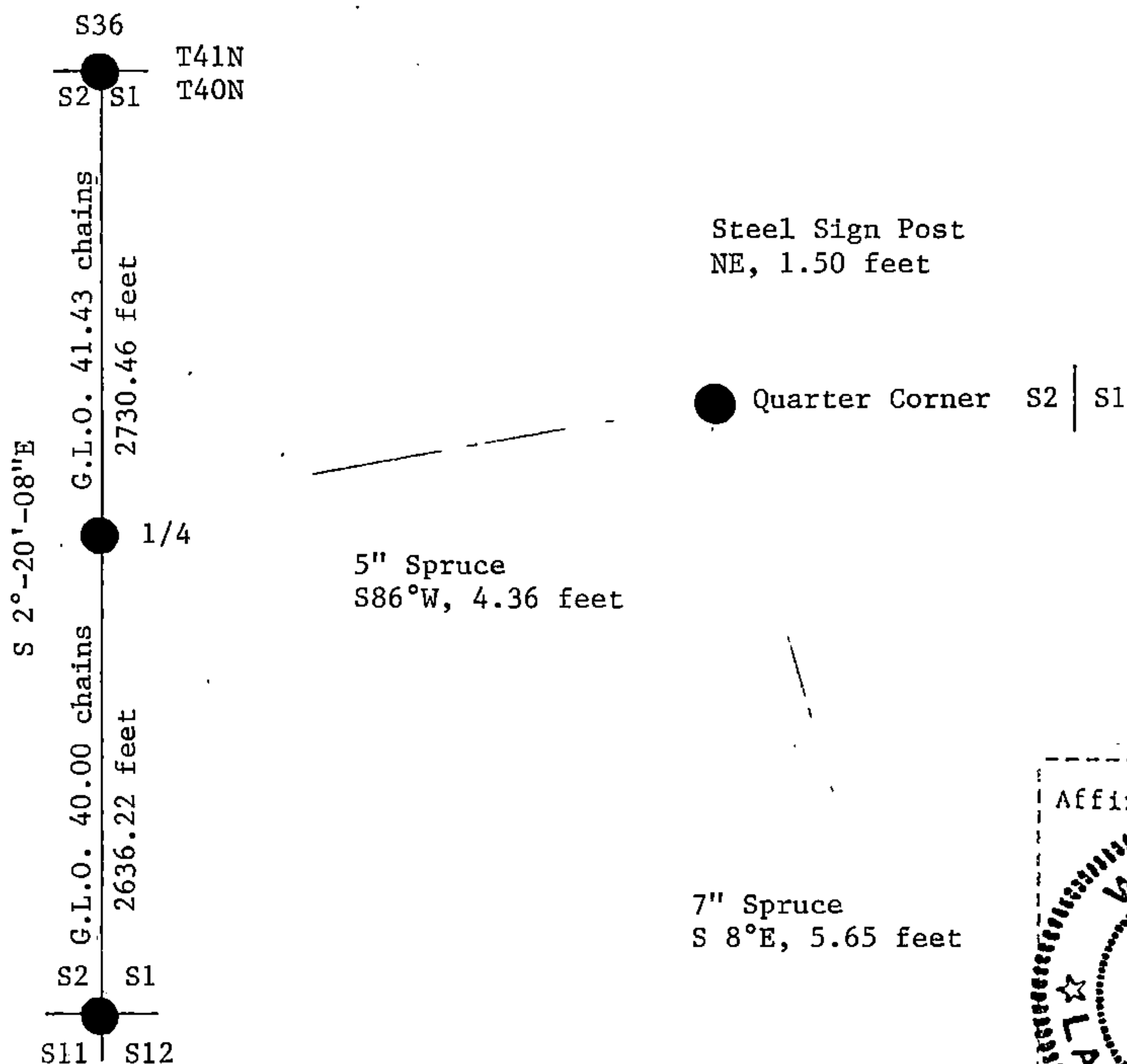
(e) Describe any material discrepancy between the location of the corner as restored or reestablished and the location of that corner as previously restored or reestablished by distance and direction. Show the discrepancy on the plan view drawing under (d), above. Show the distances between the corner as previously restored or reestablished and (1) the corner as restored or reestablished, and (2) to at least 2 of the witness monuments shown on the drawing in (d), above.

See drawing below.

(f) Was the corner restored through acceptance of (1) an obliterated evidence location, or, (2) a found perpetuated location?

(g&h) Was the corner reestablished through lost corner proportionate methods? If so, show the method, including the directions and distances to other public land survey corners used as evidence or used for proportioning in determining the corner location?

Re-established through lost corner proportionate methods.



(i) I, William B. Cochrane
 (type or print name) certify that the corner location shown on this record was determined by me or under my direction and control and that this U.S. Public Land Survey Monument Record is correct and complete to the best of my knowledge and belief.

William B. Cochrane Signature October 14, 1986 Date

Certificate ready for filing: [Signature] District Ranger 3-9-87 Date