

U.S. PUBLIC LAND SURVEY MONUMENT RECORD

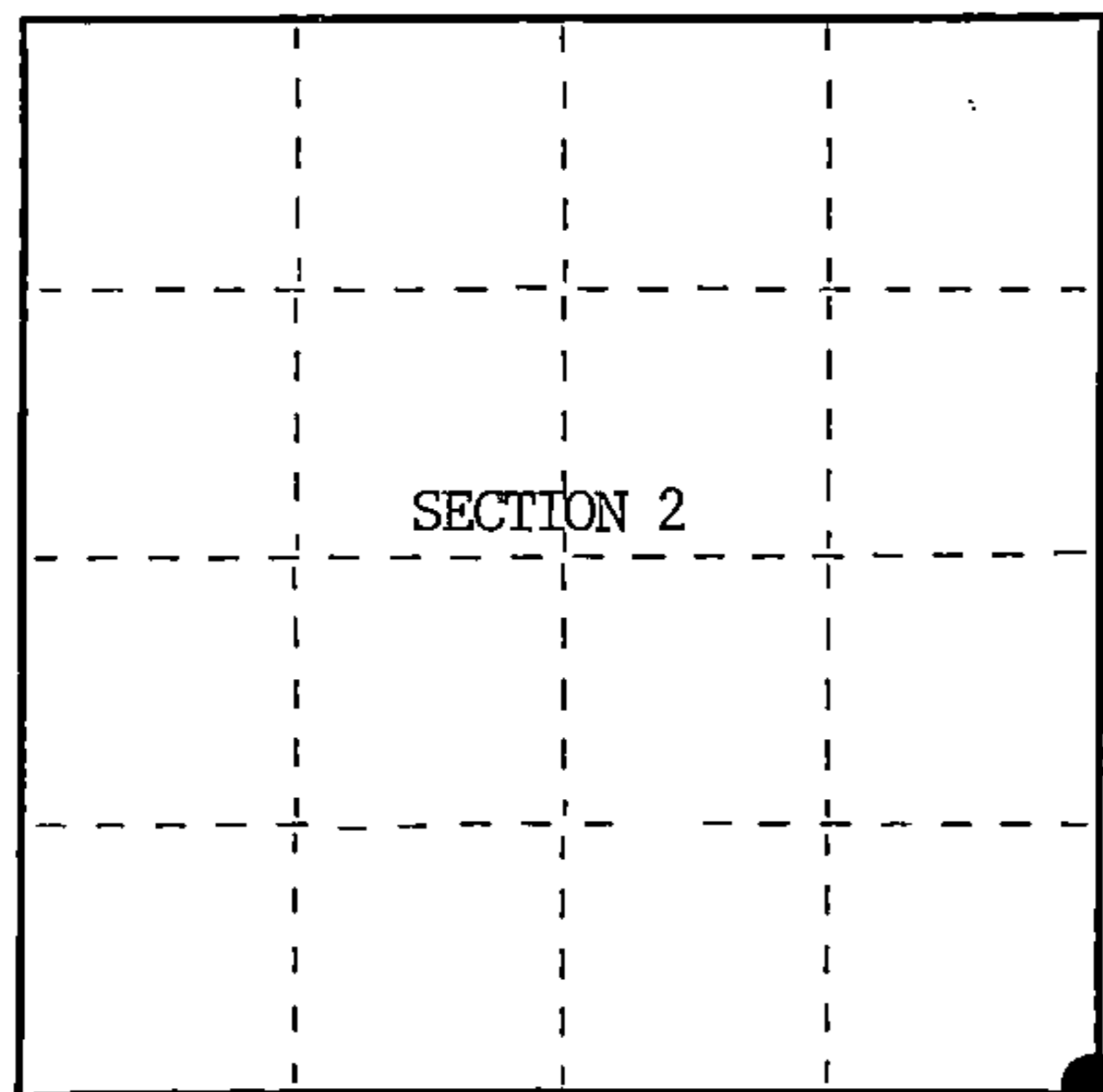
Index No. E-21

State of Wisconsin }
 County of Forest } ss.

I, William B. Cochrane, do hereby certify that on the 9th day of July, 1986, I found evidence of the Southeast Section corner of Section 2 Township 40, North, Range 13 East, Fourth Principal Meridian, as described hereon; and that from this evidence I established a new monument and accessories as described hereon to perpetuate the original location of this corner.

Resident witnesses:

Tony Tillman



○ = Corner monument restored.

History of original corner establishment:

Original Government Survey in 1865 by William E. Daugherty. North between Sections 11 and 12, 80.00 chains, set Section Corner Post to Sections 1, 2, 11, and 12. From which the following bear;

Birch	18"	N85°W	21 lks.
Birch	15"	S34°E	16 lks.

Description of corner evidence found:

No corner evidence was recovered.

The corner position was re-established using double proportionate methods between the Northeast Section Corner of Section 2 and the Southeast Section Corner of Section 11, and between the Northwest Section Corner of Section 11 and the Northeast Section Corner of Section 12.

Description of monument and accessories I established to perpetuate the original location of this corner.

At the corner position, set a 2½ inch diameter aluminum pipe monument, 3 feet long, 2½ feet in the ground, with an aluminum cap stamped; T40N, R13E, S1, S2, S11, S12, 1986, S-1107. From which the following new blazed and scribed bearing trees bear;

Maple	7"	N41°E	23.20 feet
Y. Birch	14"	S27°E	8.90 feet
Maple	7"	S69°W	22.90 feet
Maple	7"	N 9°W	9.09 feet
Steel Sign Post		NW	0.75 feet

Dated at Hiles, Wis., this 8th day of October, 1986

Signature William B. Cochrane Title Land Surveyor Registration No. S-1107
 (County Surveyor, Registered Land Surveyor, or other duly authorized official)

Office of Register of Deeds, County of Forest, I hereby certify that the within instrument was filed in this office for record on the 11th day of March, 1987 at 3:30 o'clock P. M.

Paul Achenbrenner
 (Register of Deeds)

By _____ Deputy

FORM NO. 985-A

H.C. Miller Company
 Lincoln, Nebraska

Stock No. 26273

DOCUMENT NUMBER 132420

4401302000

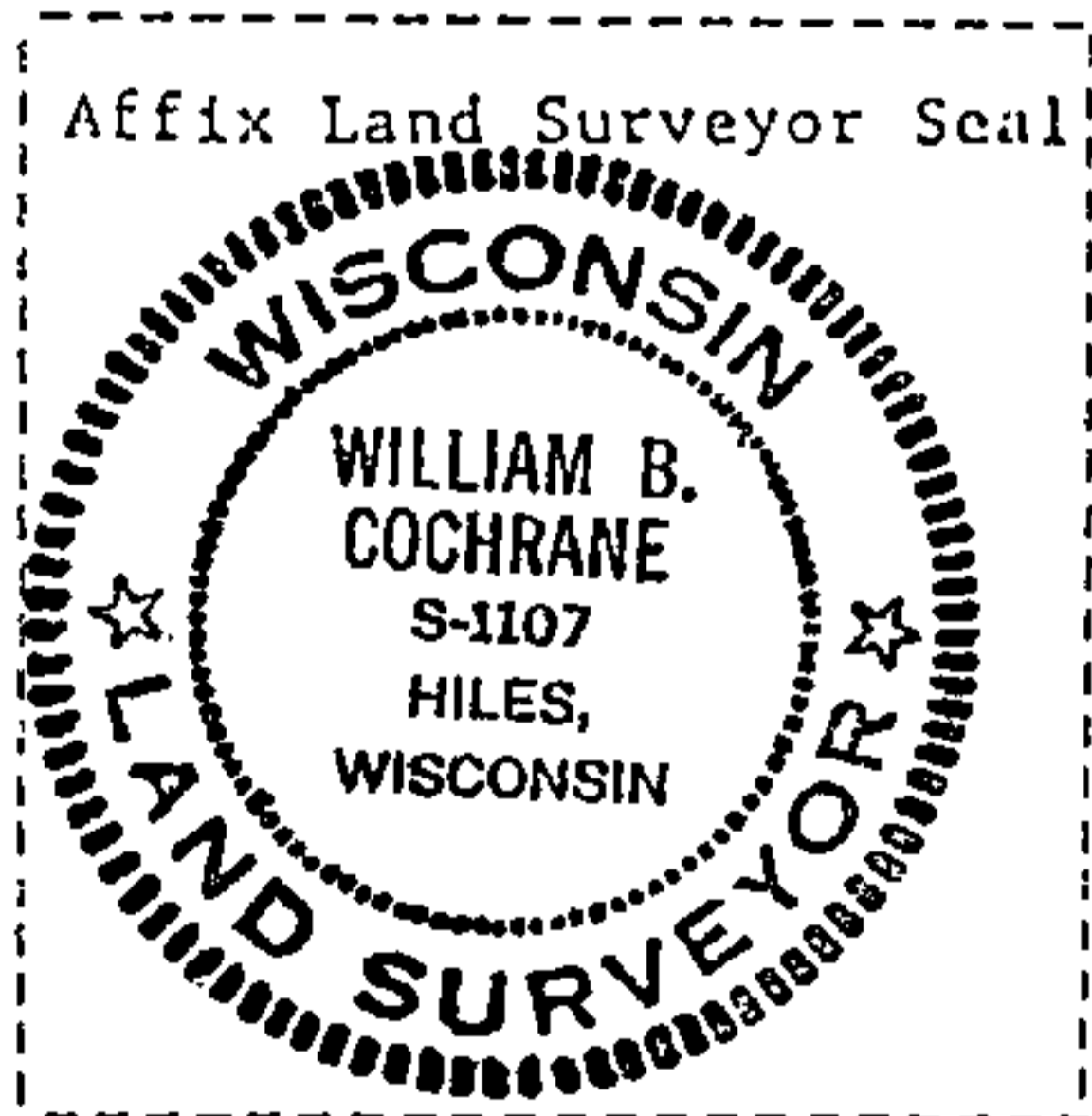
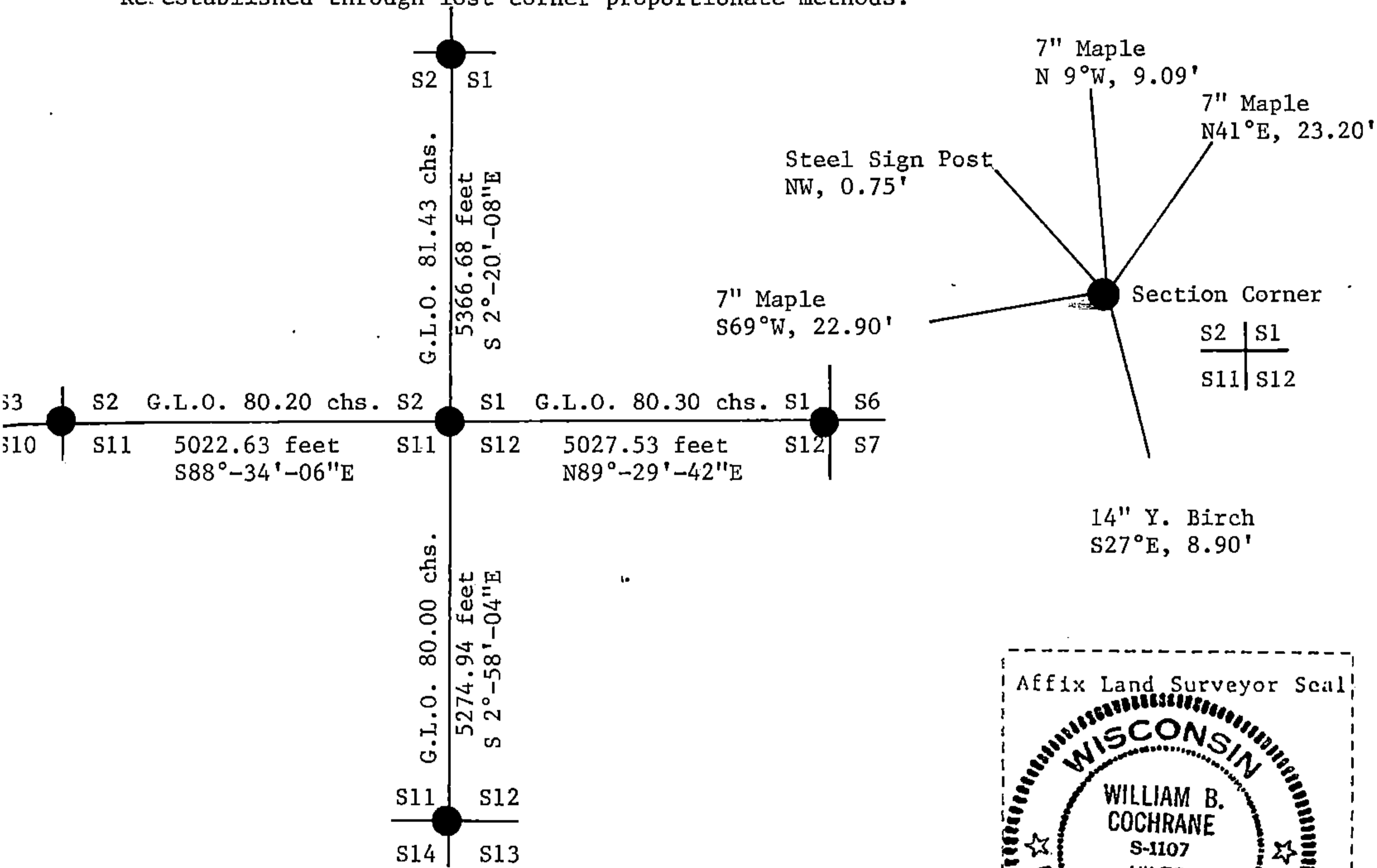
(e) Describe any material discrepancy between the location of the corner as restored or reestablished and the location of that corner as previously restored or reestablished by distance and direction. Show the discrepancy on the plan view drawing under (d), above. Show the distances between the corner as previously restored or reestablished and (1) the corner as restored or reestablished, and (2) to at least 2 of the witness monuments shown on the drawing in (d), above.

See drawing below.

(f) Was the corner restored through acceptance of (1) an obliterated evidence location, or, (2) a found perpetuated location?

(g&h) Was the corner reestablished through lost corner proportionate methods? If so, show the method, including the directions and distances to other public land survey corners used as evidence or used for proportioning in determining the corner location?

Re-established through lost corner proportionate methods.



(i) I, William B. Cochrane
(type or print name) certify that the corner location shown on this record was determined by me or under my direction and control and that this U.S. Public Land Survey Monument Record is correct and complete to the best of my knowledge and belief.

William B. Cochrane Signature October 14, 1986 Date

Certificate ready for filing. [Signature] District Ranger 3-9-87 Date