

**ORIGINAL ON FILE IN CO CLERK'S OFFICE
COPY HERE FOR REFERENCE**

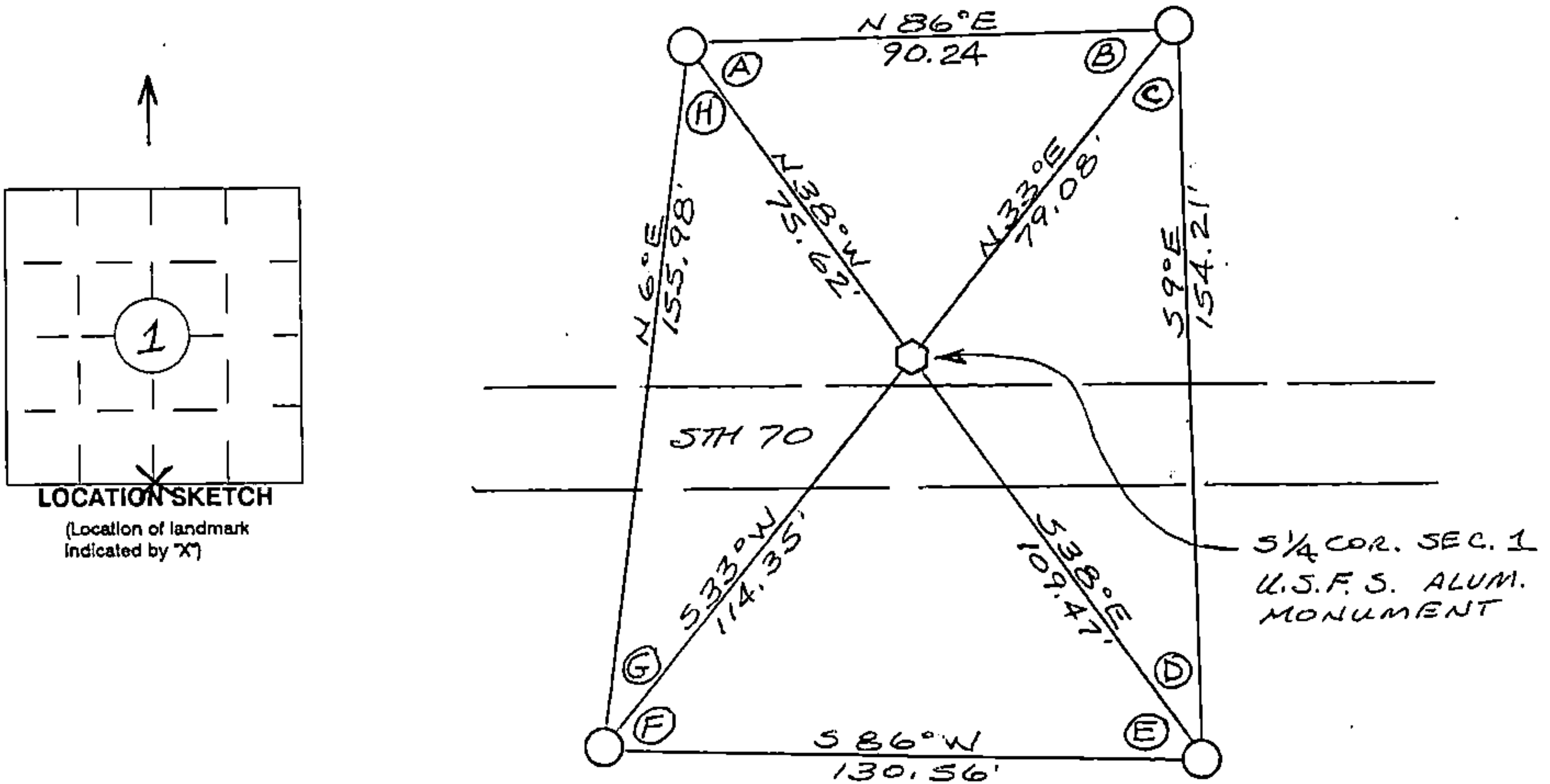
**RECORD AND CERTIFICATION OF U.S.
PUBLIC LAND SURVEY CONTROL STATION**

Wisconsin Department of Transportation

ED718 887

District 7	Project ID 9090-01-00	Located By J. R. WALLIN - SURVEY CREW CHIEF		
Corner SOUTH 1/4 COR. 1	Township T40N	Range (E,W) R 13 E	County FOREST	
Wisconsin Coordinates FROM AYRES	East (X) 2,302,584.29	North (Y) 294,379.12	Elevation (Z)	Zone N
Control Station Name	East (X)	North (Y)	Elevation (Z)	Zone
Horizontal - NORTH AMERICAN, 1927		CONTROL DATUM Vertical - MEAN SEA LEVEL, 1929 ADJUSTMENT		
Horizontal - _____ Order		SURVEY CONTROL Vertical - _____ Order		

SKETCH



I hereby certify that on the date of NOV. 7, 1994
the above corner was located by a marker and/or references established by

WILLIAM B. COCHRANE 5-1107
(registered land surveyor) (registration no.)

I further certify that to perpetuate the location of said corner, on the date of
NOV. 7, 1994 at the exact location thereof,
a permanent marker or witness monuments consisting of

FOUR 2 1/2" x 30" BERNTSEN MAGNETIC
ALUMINUM MONUMENTS
were located as shown above.

ANGLE TABLE

A = 56° 07' 12"
B = 52° 32' 56"
C = 42° 15' 49"
D = 29° 04' 03"
E = 56° 04' 28"
F = 52° 35' 40"
G = 27° 20' 29"
H = 43° 59' 23"

SOUTH 1/4
(CORNER)

1
(SECTION)

40N
(TOWN)

13E
(RANGE)

Signature (District Survey Supervisor) COORD.
Jack R. Wallin

44013010020

U.S. PUBLIC LAND SURVEY MONUMENT RECORD

Index No. E-23

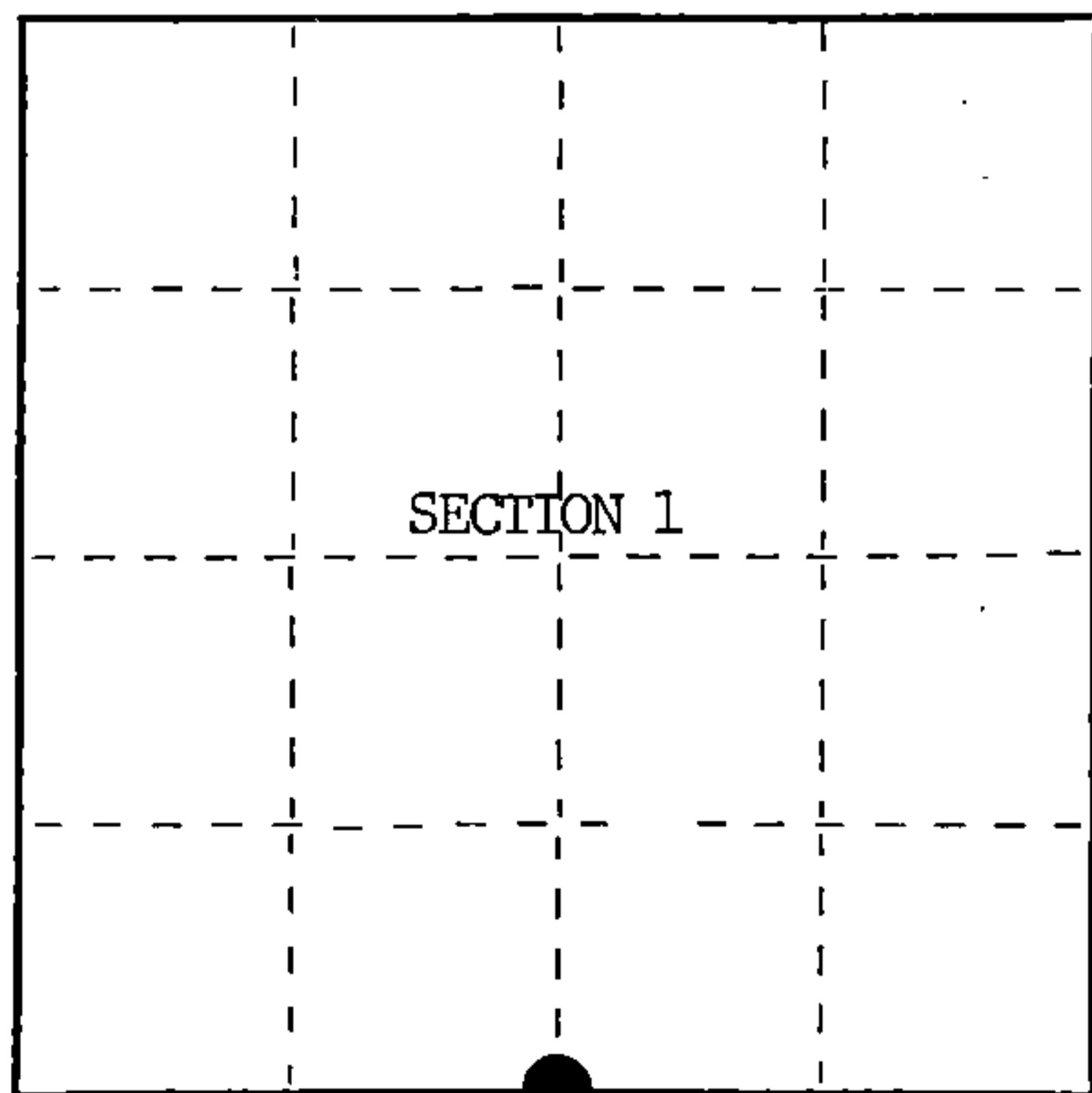
State of Wisconsin }
County of Forest } ss.

I, William B. Cochrane, do hereby certify that on the 9th day of July, 1986, I found evidence of the South Quarter corner of Section 1 Township 40 North, Range 13 East, Fourth Principal Meridian, as described hereon; and that from this evidence I established a new monument and accessories as described hereon to perpetuate the original location of this corner.

Resident witnesses:

Tony Tillman

Russ Brown



○ = Corner monument restored.

History of original corner establishment:

Original Government Survey in 1865 by William E. Daugherty. West corrected between Sections 1 and 12, 40.15 chains, set Quarter Section Post, from which the following bear;

Sugar	12"	N33°E	17 lks.
Birch	15"	S41°W	15 lks.

Description of corner evidence found:

No corner evidence was recovered.

The corner position is re-established at proportionate distance and on line between the Southwest and Southeast Section Corners of Section 1.

Description of monument and accessories I established to perpetuate the original location of this corner.

At the corner position, set a 2½ inch diameter aluminum pipe monument, 3 feet long, 6 inches below the shoulder of State Hwy 70, with an aluminum cap stamped; T40N R13E, 1/4, S1, S12, 1986, S-1107. From which the following new blazed and scribed bearing trees bear;

Maple	16"	N13°E	87.09 feet
Maple	12"	N45°W	114.90 feet
Steel Sign Post		North	16.00 feet

Dated at Hiles, Wis., this 8th day of October, 1986

Signature *William B. Cochrane* Title Land Surveyor Registration No. S-1107
(County Surveyor, Registered Land Surveyor, or other duly authorized official)

Office of Register of Deeds, County of Forest. I hereby certify that the within instrument was filed in this office for record on the 11th day of March, 1987 at 3:30 o'clock P. M.

Paul Achenbrenner
(Register of Deeds)

By _____ Deputy

FORM NO. 985-A

McMillan Company

Stock No. 26273

DOCUMENT NUMBER 132421

441013010020

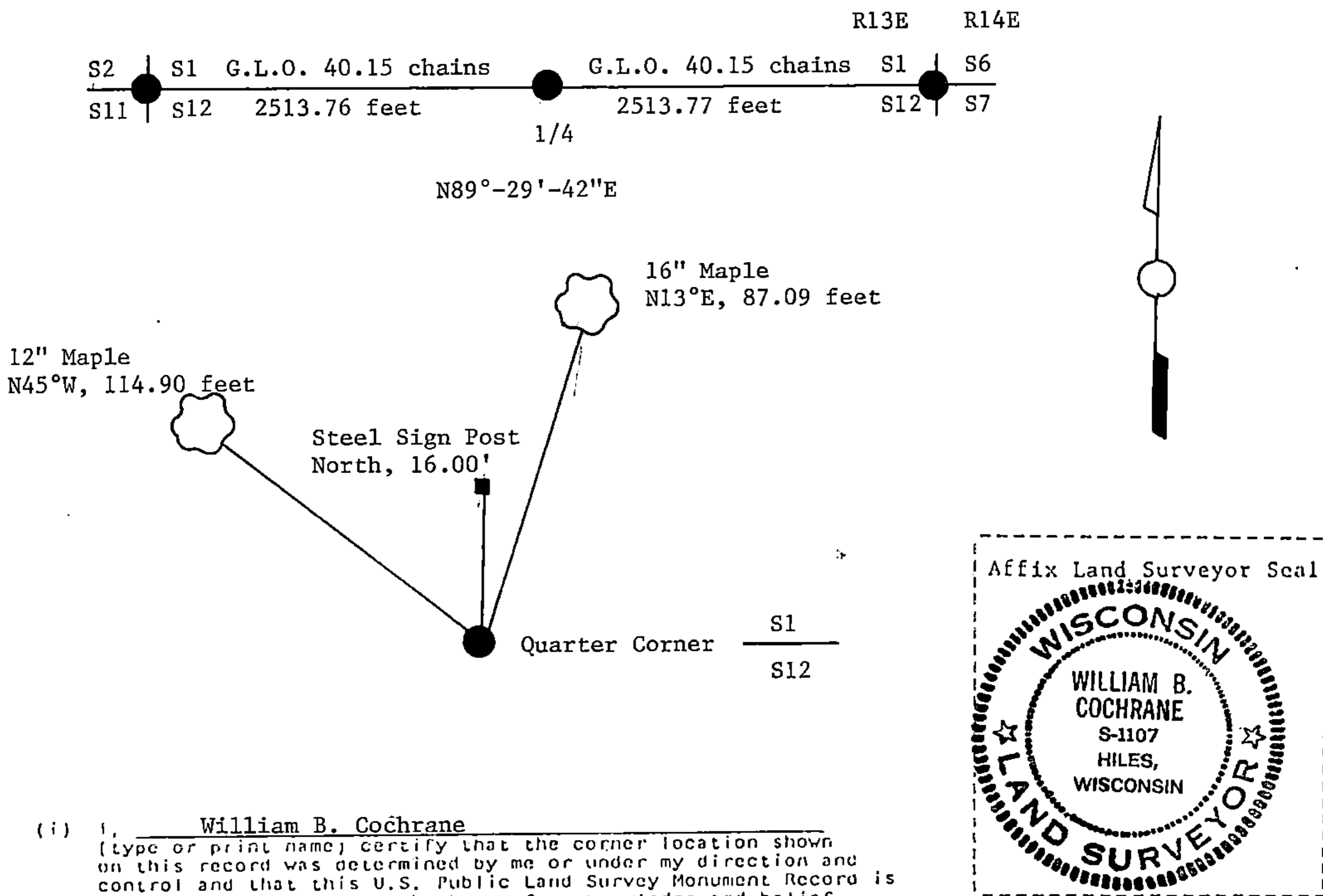
(e) Describe any material discrepancy between the location of the corner as restored or reestablished and the location of that corner as previously restored or reestablished by distance and direction. Show the discrepancy on the plan view drawing under (d), above. Show the distances between the corner as previously restored or reestablished and (1) the corner as restored or reestablished, and (2) to at least 2 of the witness monuments shown on the drawing in (d), above.

See drawing below.

(f) Was the corner restored through acceptance of (1) an obliterated evidence location, or, (2) a found perpetuated location?

(g&h) Was the corner reestablished through lost corner proportionate methods? If so, show the method, including the directions and distances to other public land survey corners used as evidence or used for proportioning in determining the corner location?

Re-established through lost corner proportionate methods.



(i) I, William B. Cochrane
 (type or print name) certify that the corner location shown on this record was determined by me or under my direction and control and that this U.S. Public Land Survey Monument Record is correct and complete to the best of my knowledge and belief.

William B. Cochrane October 14, 1986
 Signature Date

Certificate ready for filing: [Signature] 3-9-87
 District Ranger Date