

U.S. PUBLIC LAND SURVEY MONUMENT RECORD

Index No. T-8

State of Wisconsin }  
County of Forest } ss.

I Gary L. Pisoni, do hereby  
certify that on the 16th day  
of August, 1989, I found  
evidence of the Center-East 1/16  
corner of Section 29  
Township 40, North, Range  
12E, Fourth Principal Meridian,  
as described hereon; and that from this evidence  
I established a new monument and accessories  
as described hereon to perpetuate the original  
location of this corner.

Resident witnesses:

History of original corner establishment:

Corner was set in 1980 by the U.S.F.S. under the direction of William B. Cochrane,  
a Registered Land Surveyor during the sub-division of Section 29.

U.S.F.S. set a 2 1/2 inch diameter aluminum pipe monument 30" long with an aluminum cap,  
stamped to identify the corner. Bearing trees established:

White Birch 12" N 52°E 33.36 feet  
White Birch 10" N 82°W 20.10 feet  
Steel sign post Northwest 0.5 feet

Description of corner evidence found:

Monument as described and in place.

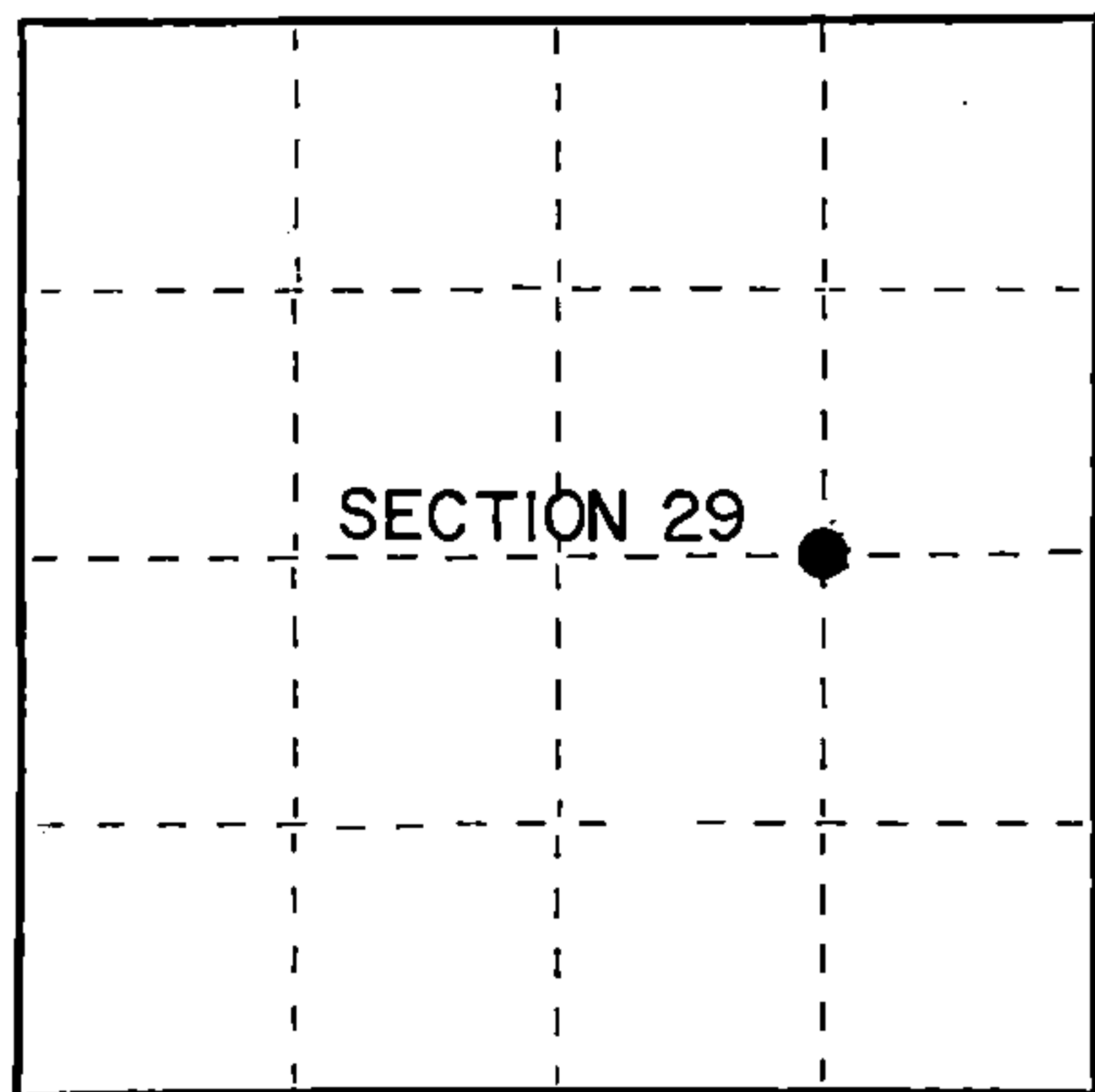
Bearing trees recovered:

White Birch 14" N 52°E 33.36 feet  
Steel sign post N 65°W 0.5 feet

Description of monument and accessories I established to perpetuate the original location of this corner.

Blazed and scribed the following new bearing tree:

Sugar Maple 8" N 65°W 16.98 feet



○ = Corner monument restored.

Dated at Iron River, MI, this 26th day of August, 1989

Signature: Gary L. Pisoni Title: Land Surveyor Registration No. S-1634  
(County Surveyor, Registered Land Surveyor, or other duly authorized official)

Office of Register of Deeds, County of Forest, I hereby certify that the within  
instrument was filed in this office for record on the 8th day of March, 1990  
at 1:00 o'clock P.M.

Paul Achenbrenner  
(Register of Deeds)

By \_\_\_\_\_ Deputy

FORM NO. 985-A

H.C. Miller Company

Stock No. 26273  
DOCUMENT NUMBER  
139269

11  
A4012292010

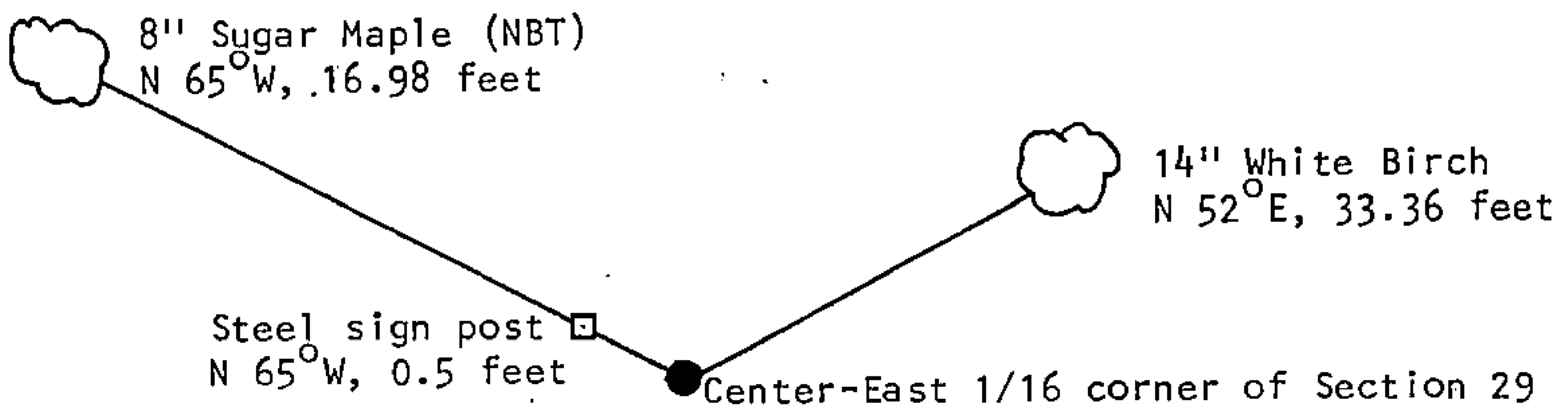
(e) Describe any material discrepancy between the location of the corner as restored or reestablished and the location of that corner as previously restored or reestablished by distance and direction. Show the discrepancy on the plan view drawing under (d), above. Show the distances between the corner as previously restored or reestablished and (1) the corner as restored or reestablished, and (2) to at least 2 of the witness monuments shown on the drawing in (d), above.

See drawing below.

(f) Was the corner restored through acceptance of (1) an obliterated evidence location, or, (2) a found perpetuated location?

Restored through acceptance of a found perpetuated location.

(g&h) Was the corner reestablished through lost corner proportionate methods? If so, show the method, including the directions and distances to other public land survey corners used as evidence or used for proportioning in determining the corner location?



(i) I, Gary L. Pisoni  
 (type or print name) certify that the corner location shown on this record was determined by me or under my direction and control and that this U.S. Public Land Survey Monument Record is correct and complete to the best of my knowledge and belief.

Gary L. Pisoni 8-26-89  
 Signature Date

Survey requested by: Cam Bortone 1/5/90  
 District Ranger Date