

U.S. PUBLIC LAND SURVEY MONUMENT RECORD

Index No. R-7

State of Wisconsin }
County of Forest } ss.

I Gary L. Pisoni, do hereby certify that on the 16th day of August, 1989, I found evidence of the 1/4 corner of Sections 20 and 29 Township 40 North, Range 12E, Fourth Principal Meridian, as described hereon; and that from this evidence I established a new monument and accessories as described hereon to perpetuate the original location of this corner.

Resident witnesses:

History of original corner establishment:

Corner position established from the 1941 General Land Office dependent resurvey of this township. They set a 2" diameter iron pipe monument with a brass cap stamped to identify the corner. Corner references established in 1941: Oak 20" N 39° E 30.67 feet; Hemlock S 59° E 25.15 feet

Corner references recovered in 1980 by U.S.F.S.:

Oak 20" N 39° E 30.67 feet
Hemlock Stump S 59° E 25.15 feet

New corner reference set by U.S.F.S. in 1980:

White Birch 13" S 17° E 14.47 feet

Description of corner evidence found:

Monument as described and in place.

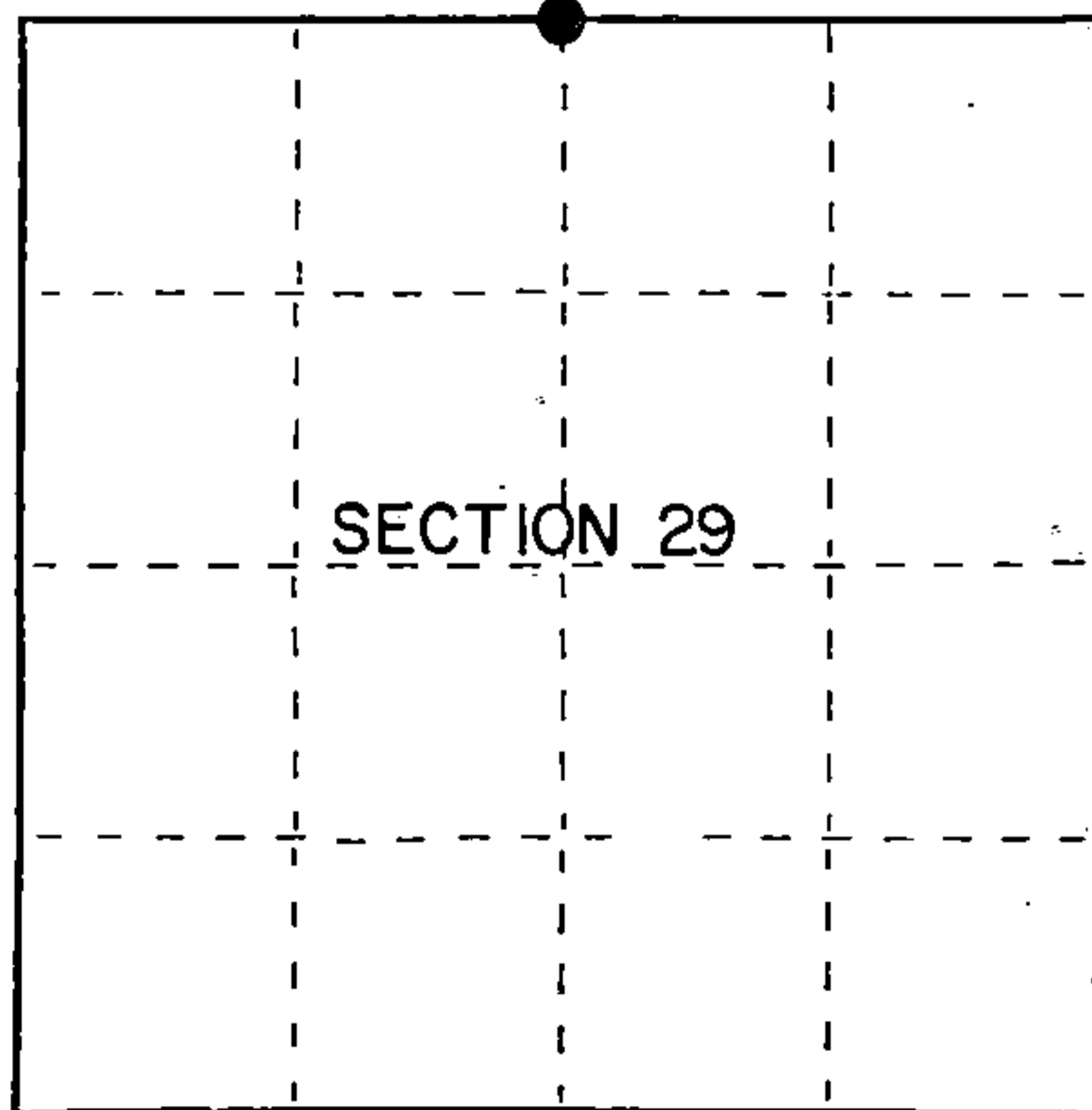
Corner references recovered:

Oak 24" N 39° E 30.67 feet
Wood sign post S 30° W 1.4 feet

Description of monument and accessories I established to perpetuate the original location of this corner.

Blazed and scribed the following new bearing trees:

Sugar Maple 8" S 73° E 35.08 feet
Sugar Maple 5" N 59° W 21.15 feet



● = Corner monument restored.

Dated at Iron River, MI, Wis., this 26th day of August, 1989

Signature Gary L. Pisoni Title Land Surveyor Registration No S-1634
(County Surveyor, Registered Land Surveyor, or other duly authorized official)

Office of Register of Deeds, County of Forest, I hereby certify that the within instrument was filed in this office for record on the 8th day of March, 1990 at 1:00 o'clock P.M.

Paul A. Schambrenner
(Register of Deeds)

By _____ Deputy

FORM NO. 985-A

H.C. Miller Company

Stock No. 26273

DOCUMENT NUMBER

139268

44812200020

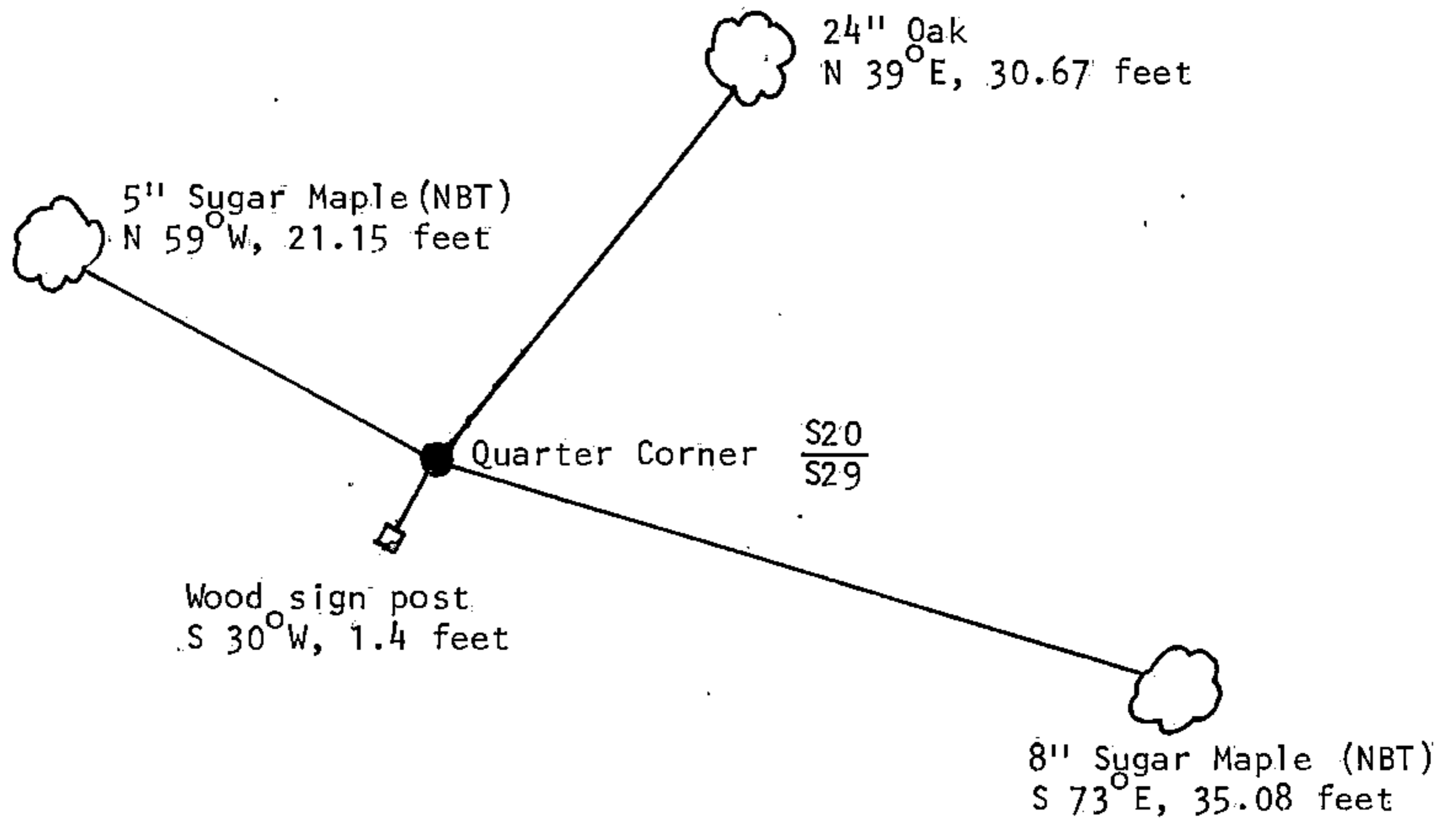
e) Describe any material discrepancy between the location of the corner as restored or reestablished and the location of that corner as previously restored or reestablished by distance and direction. Show the discrepancy on the plan view drawing under (d), above. Show the distances between the corner as previously restored or reestablished and (1) the corner as restored or reestablished, and (2) to at least 2 of the witness monuments shown on the drawing in (d), above.

See drawing below

(f) Was the corner restored through acceptance of (1) an obliterated evidence location, or, (2) a found perpetuated location?

Restored through acceptance of a found perpetuated location.

(g&h) Was the corner reestablished through lost corner proportionate methods? If so, show the method, including the directions and distances to other public land survey corners used as evidence or used for proportioning in determining the corner location?



Gary L. Pisoni

(i) I, Gary L. Pisoni (type or print name) certify that the corner location shown on this record was determined by me or under my direction and control and that this U.S. Public Land Survey Monument Record is correct and complete to the best of my knowledge and belief.

Signature Gary L. Pisoni Date 8-26-89

Survey requested by: Pam Gordon Date 1/5/90
District Ranger Date