

U.S. PUBLIC LAND SURVEY MONUMENT RECORD

Index No. L-21

State of Wisconsin }
 County of Forest } ss.

I, Robert H. Winat, do hereby certify that on the 3 day of SEPTEMBER, 1984, I found evidence of the West Quarter corner of Section 13 Township 40, North, Range 12 East, Fourth Principal Meridian, as described hereon; and that from this evidence I established a new monument and accessories as described hereon to perpetuate the original location of this corner.

Resident witnesses:

Robert H. Winat

Michael G. Stevens

History of original corner establishment:

1859-Wm. Daugherty, U.S. Government Deputy Surveyor, set wood post.

BT's 7" Tamarack S45°W 46 lks. (30.36 ft.)
 6" Tamarack S29°E 21 lks. (13.86 ft.)

1941-Guy R. Veal, Dependent Resurvey, 2"x36" iron post, proportionate distance. No remaining evidence of original post or BT's.

New BT's 5" Tamarack S72°15'E 197 lks.
 Description of corner evidence found: 4" Spruce N48°W 290 lks.

1984-North Country Surveyors-R-A, M.G. Stevens, found a 2" iron pipe and sign post in marsh area. Corner is in good shape. Spruce BT to NW is dead but still standing.

BT's found
 5" Black Spruce N46°30'W 191.5 ft. (dead)
 6" Tamarack S73°E 130.62 ft.

Description of monument and accessories I established to perpetuate the original location of this corner.

Placed nail in root crown of BT's to bring to std. Blazed, scribed and painted blazes, also painted red ring around trees.

New Corner References:

5" Black Spruce S84°W 36.48 ft.
 6" Black Spruce N26°30'E 56.49 ft.
 4" Tamarack S86°E 26.50 ft.
 3" Tamarack S37°E 11.68 ft.

Sign post is West .4 ft.
 Corner is in a wet marsh area with scattered trees

(OVER)

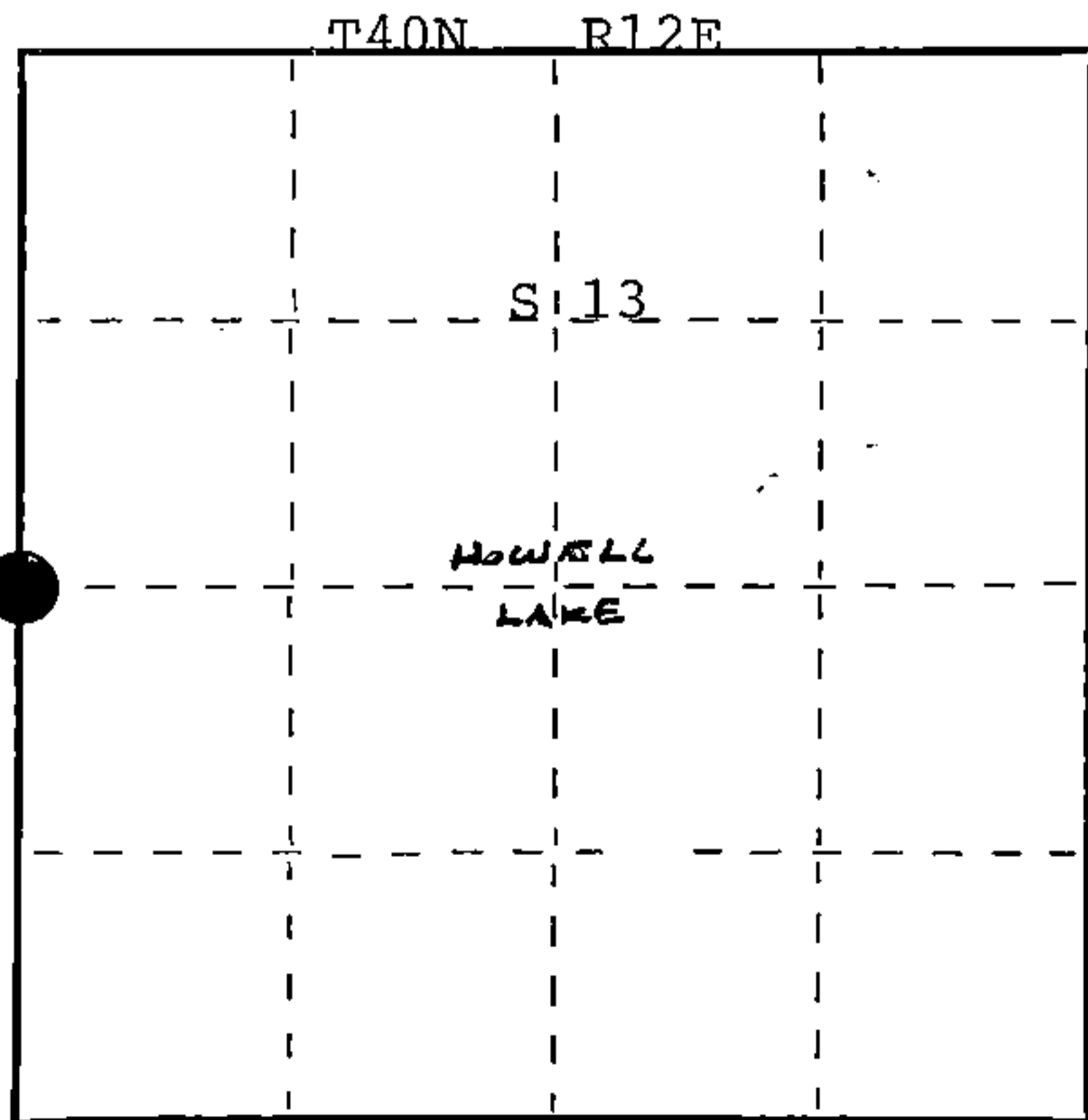
Dated at EAGLE RIVER, Wis., this 6 day of NOVEMBER, 1984

Signature Robert H. Winat Title L.S. Registration No. 1060
 (County Surveyor, Registered Land Surveyor, or other duly authorized official)

Office of Register of Deeds, County of Forest I hereby certify that the within instrument was filed in this office for record on the 24th day of July, 1985 at 1:10 o'clock P. M.

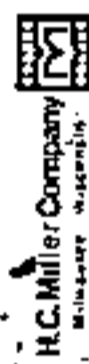
Paul Aschenbrenner
 (Register of Deeds)

By.....Deputy



● = Corner monument restored.

FORM NO. 985-A



Stock No. 26273

128647

DOCUMENT NUMBER

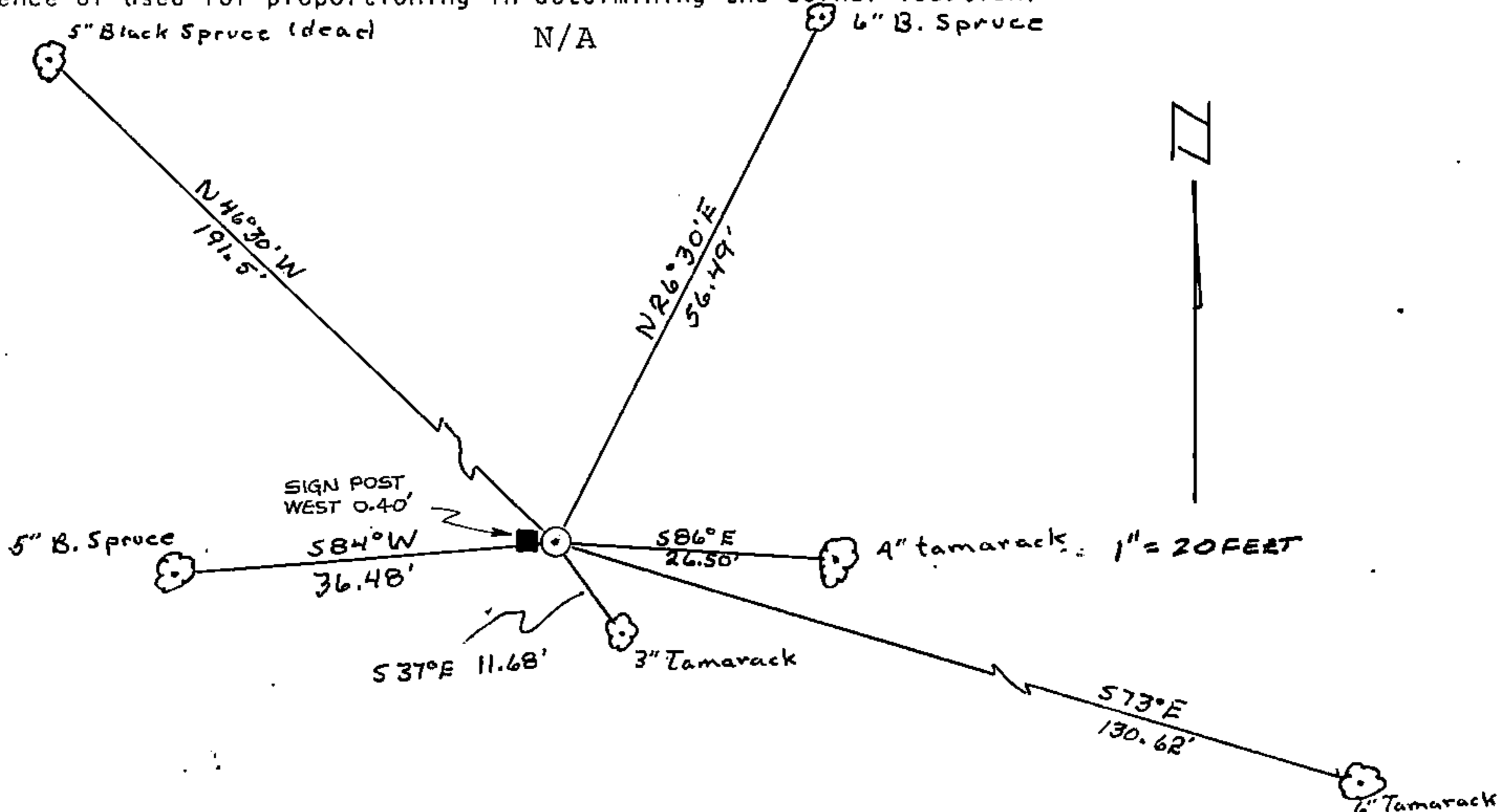
44012142000

(e) Describe any material discrepancy between the location of the corner as restored or reestablished and the location of that corner as previously restored or reestablished by distance and direction. Show the discrepancy on the plan view drawing under (d), above. Show the distances between the corner as previously restored or reestablished and (1) the corner as restored or reestablished, and (2) to at least 2 of the witness monuments shown on the drawing in (d), above.

N/A

(f) Was the corner restored through acceptance of (1) an obliterated evidence location, or, (2) a found perpetuated location? (2)

(g&h) Was the corner reestablished through lost corner proportionate methods? If so, show the method, including the directions and distances to other public land survey corners used as evidence or used for proportioning in determining the corner location?



(i) I, Robert H. Winat R.L.S. 1040
 (type or print name) certify that the corner location shown on this record was determined by me or under my direction and control and that this U.S. Public Land Survey Monument Record is correct and complete to the best of my knowledge and belief.

Robert H. Winat
 Signature

6 Nov. '84
 Date