

CERTIFIED LAND CORNER RESTORATION

State of Wisconsin }  
County of Forest } ss.

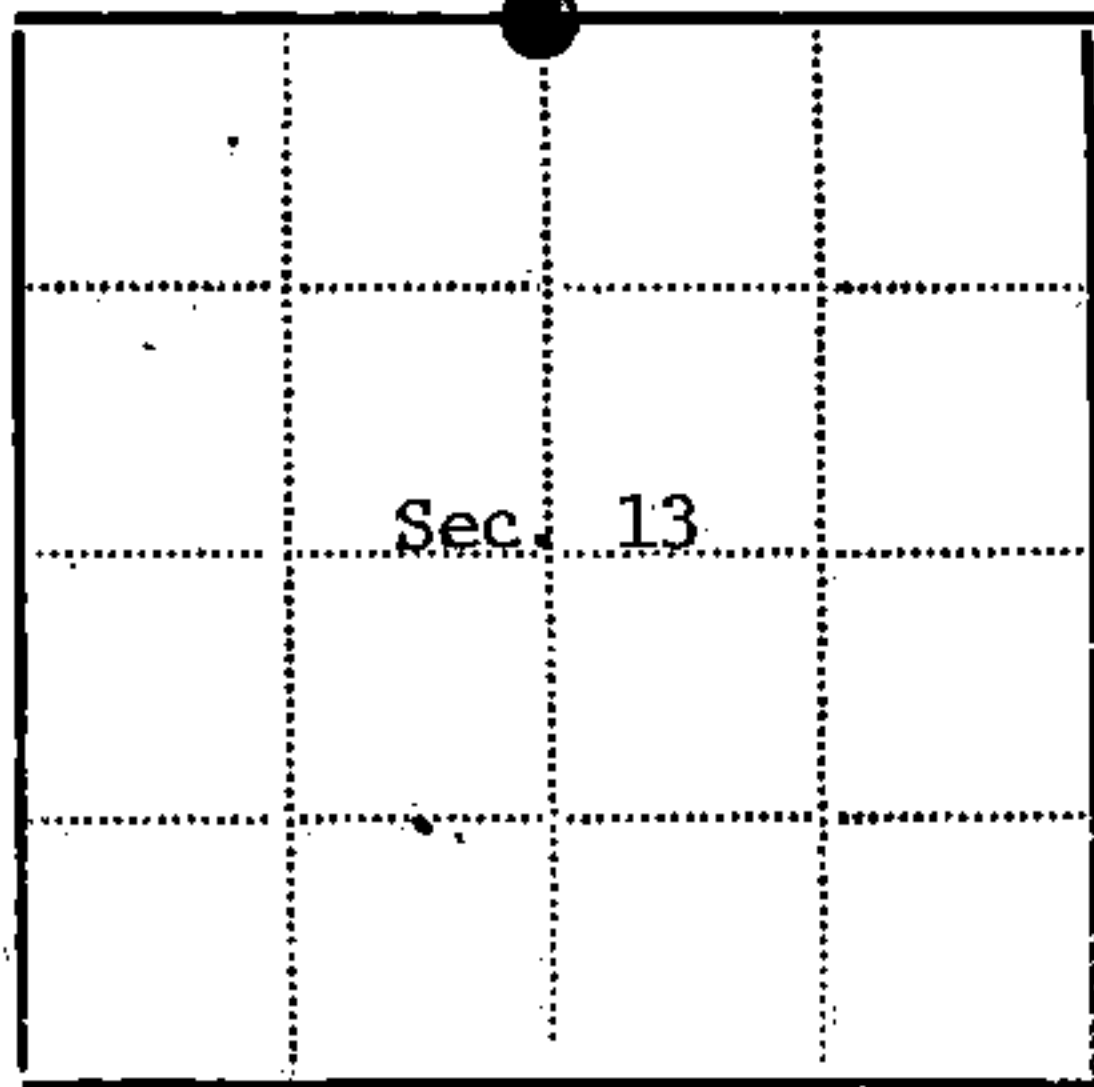
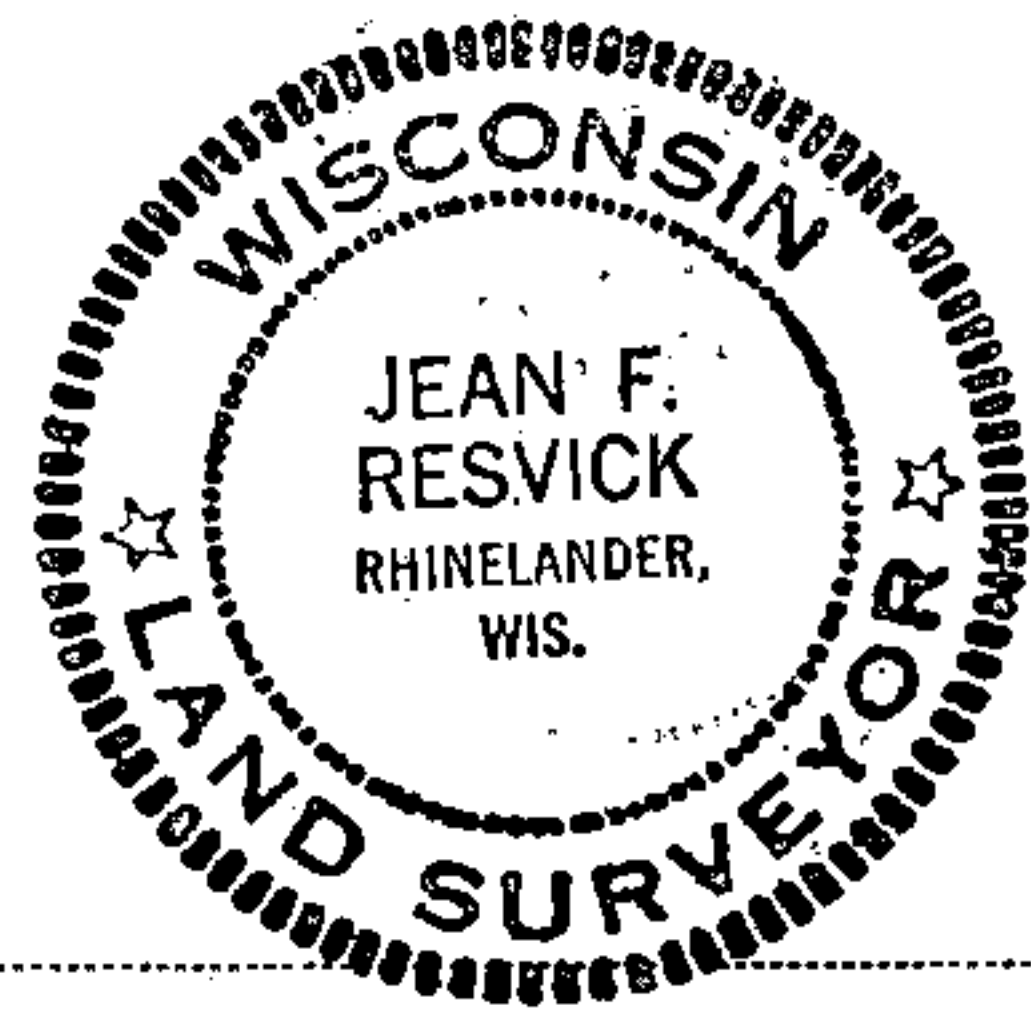
I Jean F. Resvick, do hereby certify that on the 1 day of August, 1978, I found evidence of the North Quarter corner of Section 13 Township 40 North Range 12 East, Fourth Principal Meridian, as described hereon; and that from this evidence I established a new monument and accessories as described hereon to perpetuate the original location of this corner:

Description of original monument and accessories and subsequent restorations:  
Surveyed in 1859 by William E. Daugherty  
39.982 chains west corrected between Sections 12 and 13, set post  
Tamarack 6, N28W, 20  
Tamarack 5, S44E, 9  
Dependent resurvey in 1941 by Guy R. Veal  
At proportionate distance, set iron post, 3 ft. long, 2 in. diameter, 27 ins. in the ground, with brass cap marked S12, 1/4, S13, 1941  
Tamarack 10, N84E, 75 lks.  
Spruce 6, S66 1/4W, 47 1/2 lks.  
Tamarack post, 4 ins. square, 6 ft. long, north and alongside of monument.  
Description of corner evidence found:

Monument as described  
Tamarack post rotted off on north side of monument.  
Tamarack stump 10, N83E, 50.1 ft.  
Spruce snag 6, S65W, 31.2 ft.

Description of monument and accessories I established to perpetuate the location of this corner:  
Blazed and scribed the following new bearing trees:  
White pine 7, N1E, 26.80 ft.  
Tamarack 5, S54E, 42.26 ft.  
Set steel sign post NW of monument about 1/2 foot.

44012120020



● - Corner monument restored  
□ -

Resident witnesses.....

Dated at Rhinelander, Wisconsin, this 29 day of August 1978.

Signature *Jean F. Resvick* Title Land Surveyor  
(County Surveyor, Registered Land Surveyor, or other duly authorized official)

Surveyors Registration No. S-802 DOCUMENT NUMBER 115181

Office of Register of Deeds County of Forest

I hereby certify that the within instrument was filed in this office for record on the 27th day of November 1978, and was filed in Book No. Page No. of County Records.

Signature *Guy R. Veal* Title Register of Deeds

Township 40 North Range 12 East Section 13 Index No. J-23 Page No.

23

U.S. PUBLIC LAND SURVEY MONUMENT RECORD

Index No. J-23

State of Wisconsin }  
 County of Forest } ss.

I, Robert H. Winat, do hereby certify that on the 13 day of SEPTEMBER, 1984, I found evidence of the North Quarter corner of Section 13 Township 40, North, Range 12 East, Fourth Principal Meridian, as described hereon; and that from this evidence I established a new monument and accessories as described hereon to perpetuate the original location of this corner.

Resident witnesses:

Robert H. Winat

Michael G. Stevens

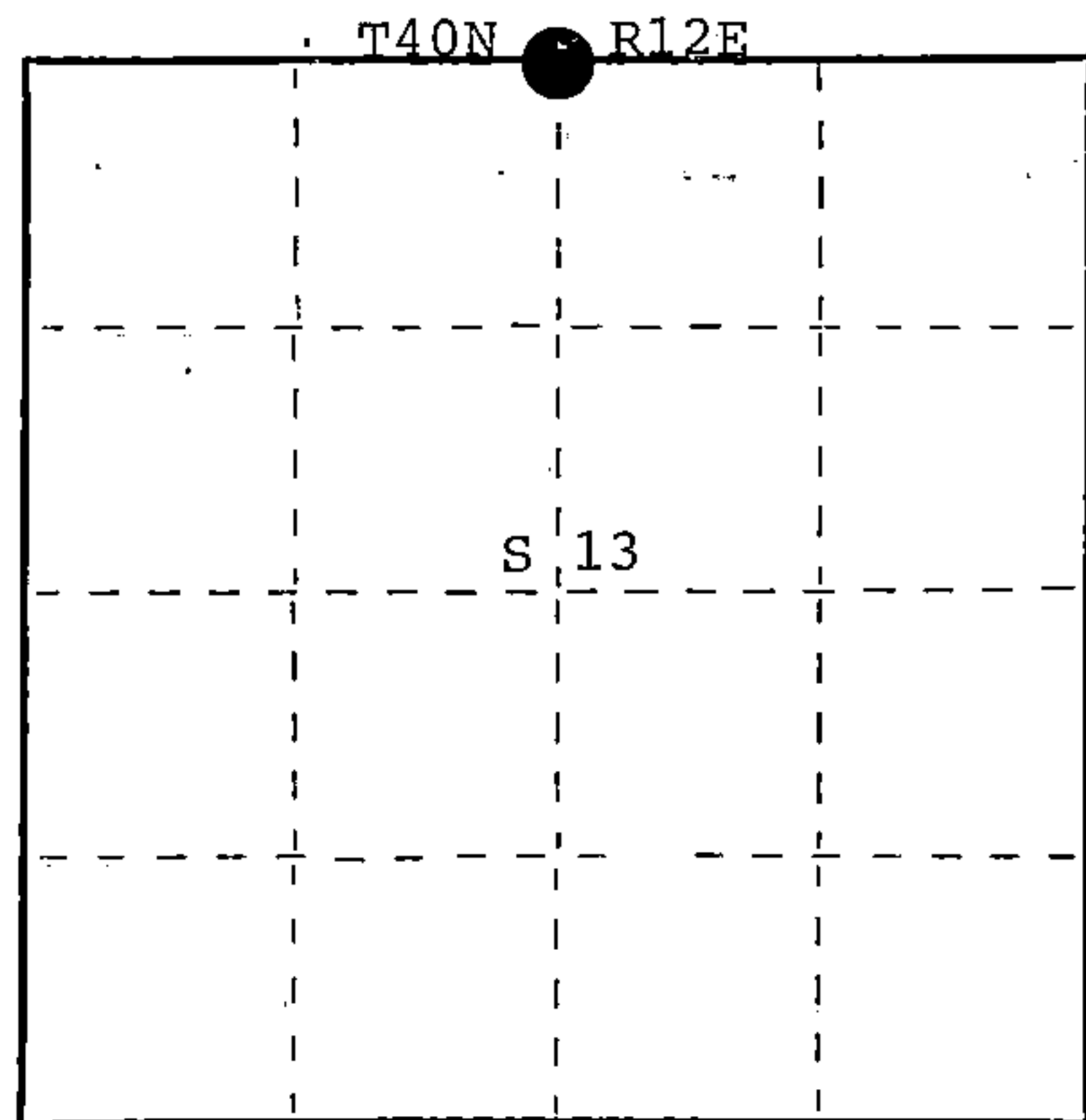
History of original corner establishment:

- 1859-Wm. Daugherty, Deputy Surveyor, set wood post.  
 BT's 6" Tamarack N28°W 20 lks. (13.20 ft.)  
 5" Tamarack S44°E 9 lks. (5.94 ft.)  
 1941-Guy R. Veal, Dependent resurvey, proportionate distance.  
 There is no remaining evidence of original post or BT's.  
 BT's 10" Tamarack N84°E 75 lks. (49.5 ft.)  
 6" Spruce S66°15'W 47½ lks. (31.35 ft.)

Description of corner evidence found:

- 1984-North Country Surveyors found a 2" iron pipe with brass cap stamped to identify corner, up 6".  
 7" Tamarack (stub) N84°30'E 50.28 ft. (tree is a windfall broken off, scribing visible)  
 9" W. Pine N0°E 26.85 ft. in good condition  
 6" Tamarack S53°30'E 42.30 ft. in good condition  
 4" Tamarack N30°W 4.28 ft. w/unsurveyed lands - tag. in good shape  
 7" Spruce (wind fall) S66°W 31.26 ft. broken off 10' above ground - scribing visible  
 Description of monument and accessories I established to perpetuate the original location of this corner.  
 Sign Post N50°W 3 ft.

Placed nail in side of trees at root crown, repainted blazes and rings.  
 New BT 8" Black Spruce S81°E 21.36 ft.



● = Corner monument restored.

(OVER)  
 Dated at EAGLE RIVER, Wis., this 6 day of NOVEMBER, 1984

Signature Robert H. Winat Title L.S. Registration No. 1060  
 (County Surveyor, Registered Land Surveyor, or other duly authorized official)

Office of Register of Deeds, County of Forest. I hereby certify that the within instrument was filed in this office for record on the 24th day of July, 1985 at 1:10 o'clock P. M.

Paul Aschenbrenner  
 (Register of Deeds)

By.....Deputy

FORM NO. 985-A

HCMille Company

Stock No. 26273

DOCUMENT NUMBER 128446

44012120020

40-12

(e) Describe any material discrepancy between the location of the corner as restored or reestablished and the location of that corner as previously restored or reestablished by distance and direction. Show the discrepancy on the plan view drawing under (d), above. Show the distances between the corner as previously restored or reestablished and (1) the corner as restored or reestablished, and (2) to at least 2 of the witness monuments shown on the drawing in (d), above.

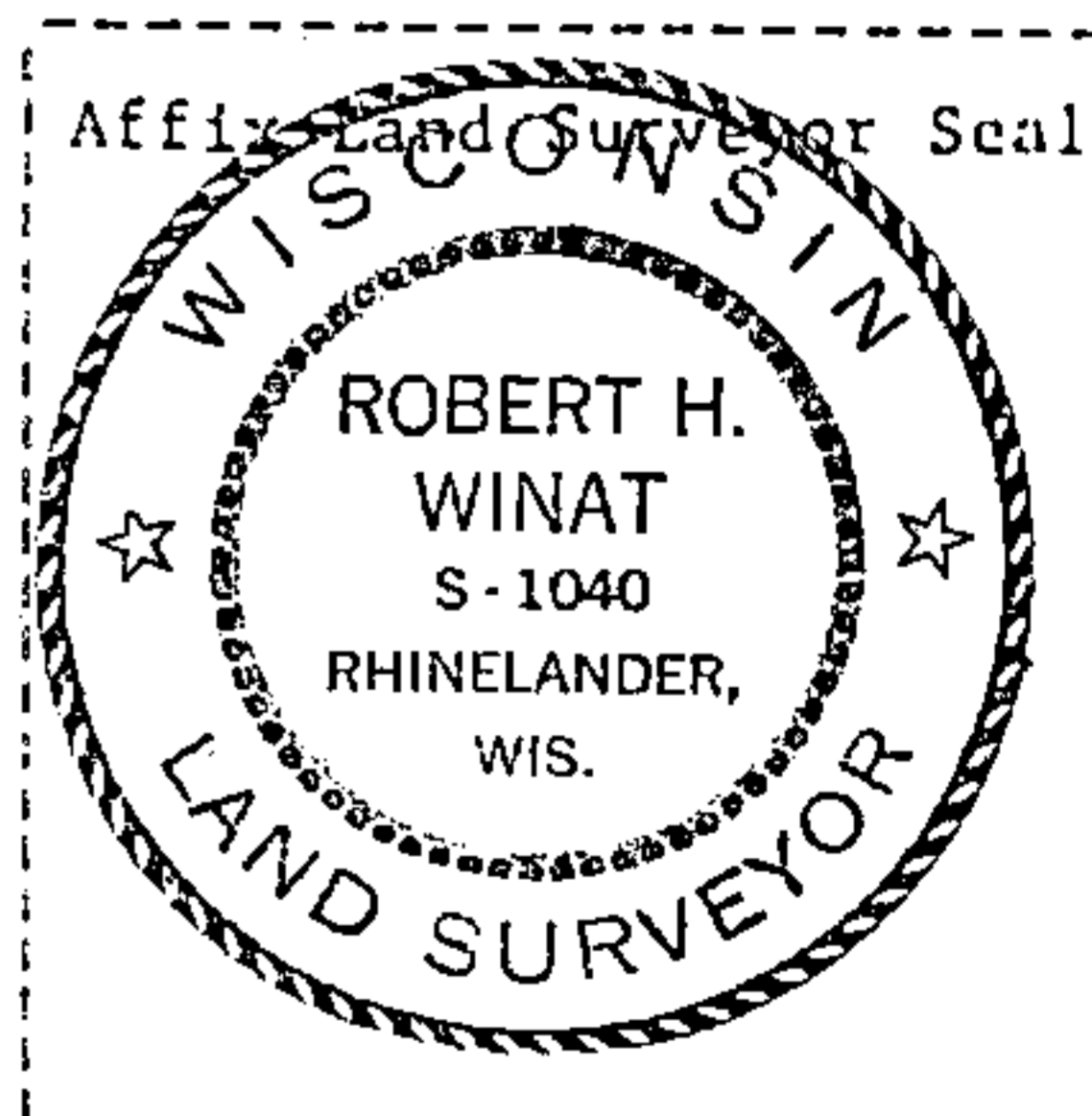
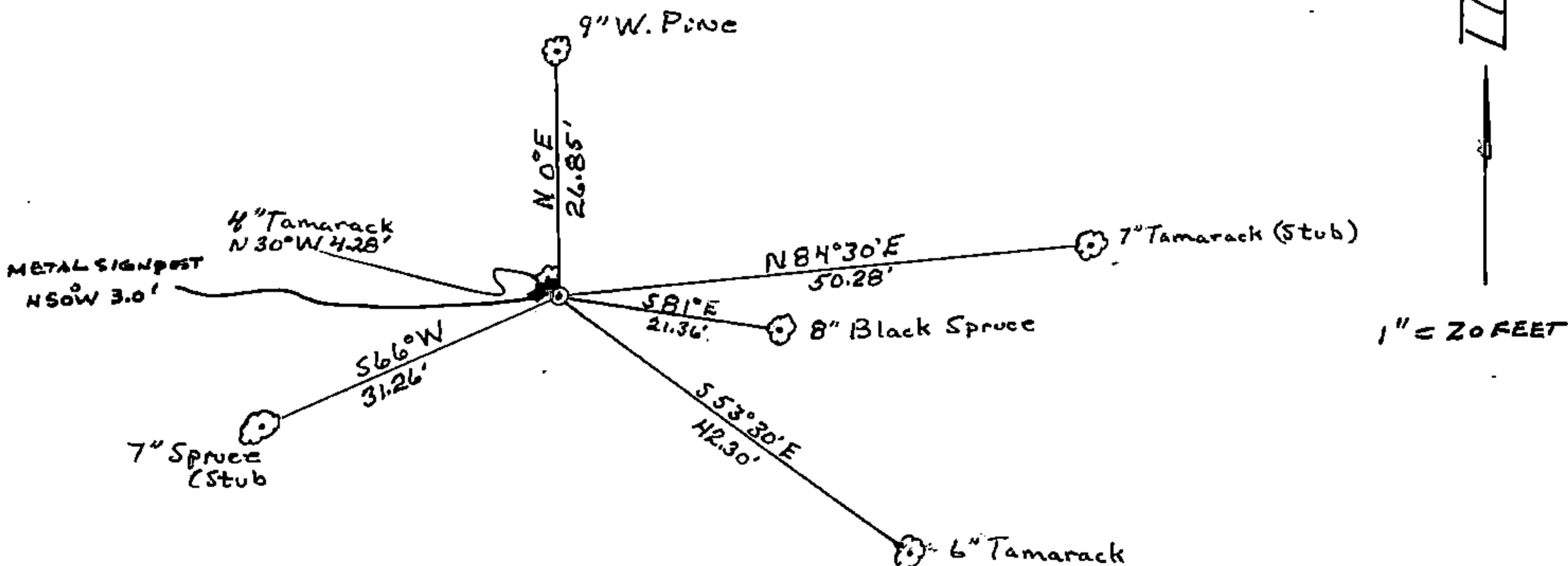
N/A

(f) Was the corner restored through acceptance of (1) an obliterated evidence location, or, (2) a found perpetuated location?

N/A

(g&h) Was the corner reestablished through lost corner proportionate methods? If so, show the method, including the directions and distances to other public land survey corners used as evidence or used for proportioning in determining the corner location?

N/A



(i) I, Robert H. Winat R.L.S. 1040  
 (type or print name) certify that the corner location shown on this record was determined by me or under my direction and control and that this U.S. Public Land Survey Monument Record is correct and complete to the best of my knowledge and belief.

Robert H. Winat  
 Signature

6 Nov. 84  
 Date