

U.S. PUBLIC LAND SURVEY MONUMENT RECORD

Index No. G-21

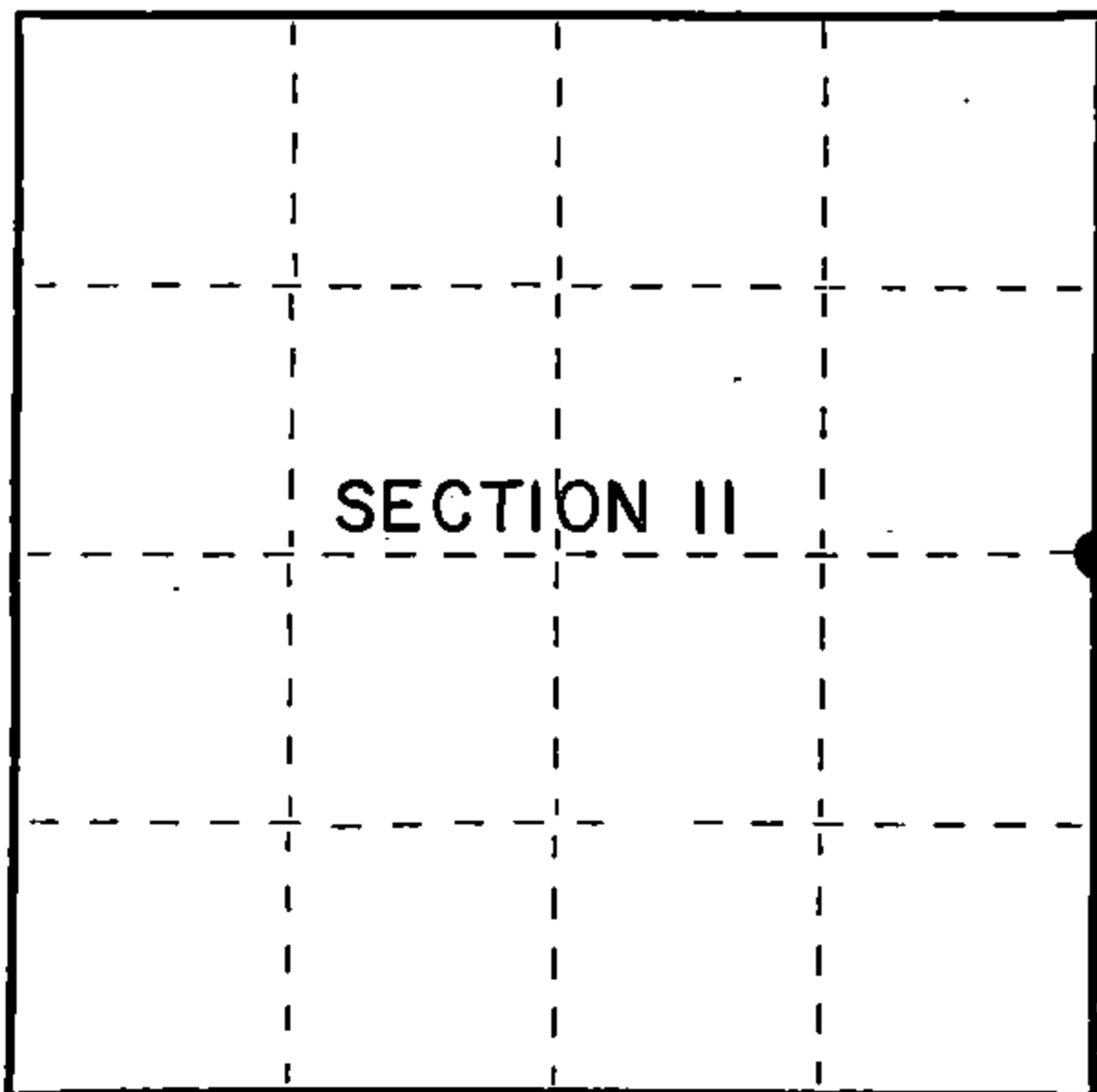
State of Wisconsin }
County of Forest } ss.

I, Gary L. Pisoni, do hereby certify that on the 26th day of November, 1986, I found evidence of the East quarter corner of Section 11 Township 40 North, Range 12E, Fourth Principal Meridian, as described hereon; and that from this evidence I established a new monument and accessories as described hereon to perpetuate the original location of this corner.

Resident witnesses:

Mark Selmo

Bill Erickson



○ = Corner monument restored.

History of original corner establishment:

1941 Dependent resurvey by Guy R. Veal and found no evidence of the original post or original bearing trees. Corner restored by proportionate methods. Guy R. Veal set a 2" diameter by 36" long iron pipe with a brass cap stamped: U.S. General Land Office Survey, 1/4, S11, S12, 1941 from which the following bear:

Maple 10" N.78°E. 52.14 feet
Maple 7" S.68°W. 19.47 feet

Description of corner evidence found:

Monument as described and in place, from which the following bear:

Sugar Maple 18" N.78°E. 52.14 feet

Description of monument and accessories I established to perpetuate the original location of this corner.

Blazed and scribed the following new bearing trees:

Sugar Maple 7" S.11°W. 9.81 feet
Sugar Maple 8" S.86°30'W. 21.79 feet
Steel sign post North 0.60 feet

Dated at Iron River, MI, Wis., this 2nd day of November, 1987.

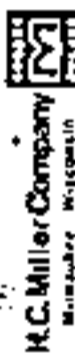
Signature: Gary L. Pisoni Title: Land Surveyor Registration No. S-1634
(County Surveyor, Registered Land Surveyor, or other duly authorized official)

Office of Register of Deeds, County of Forest. I hereby certify that the within instrument was filed in this office for record on the 5th day of February, 1988 at 12:45 o'clock P. M.

Paul Ackermann
(Register of Deeds)

By _____ Deputy

FORM NO. 985-A



Stock No. 26273

DOCUMENT NUMBER 134615

44012112000

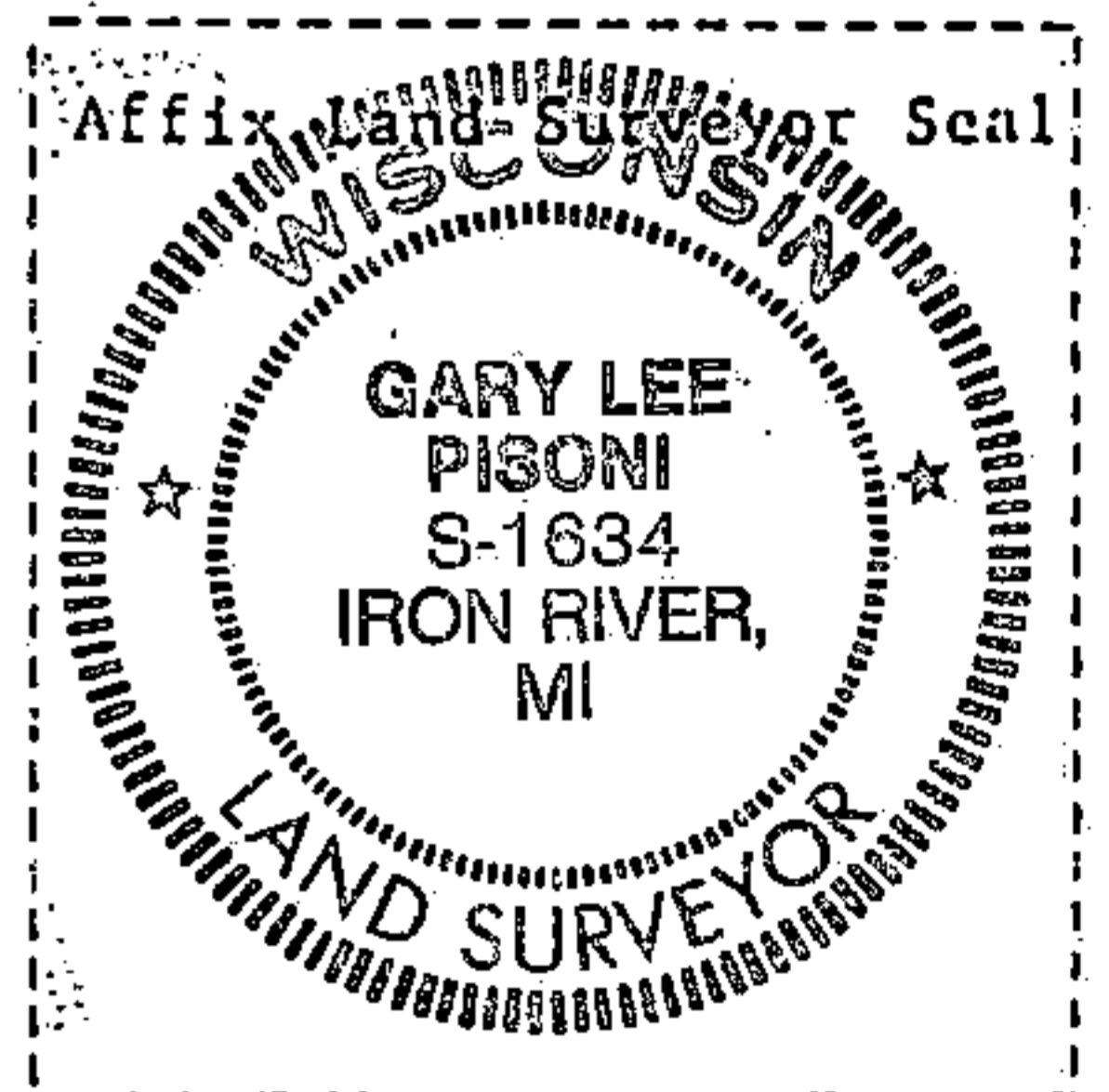
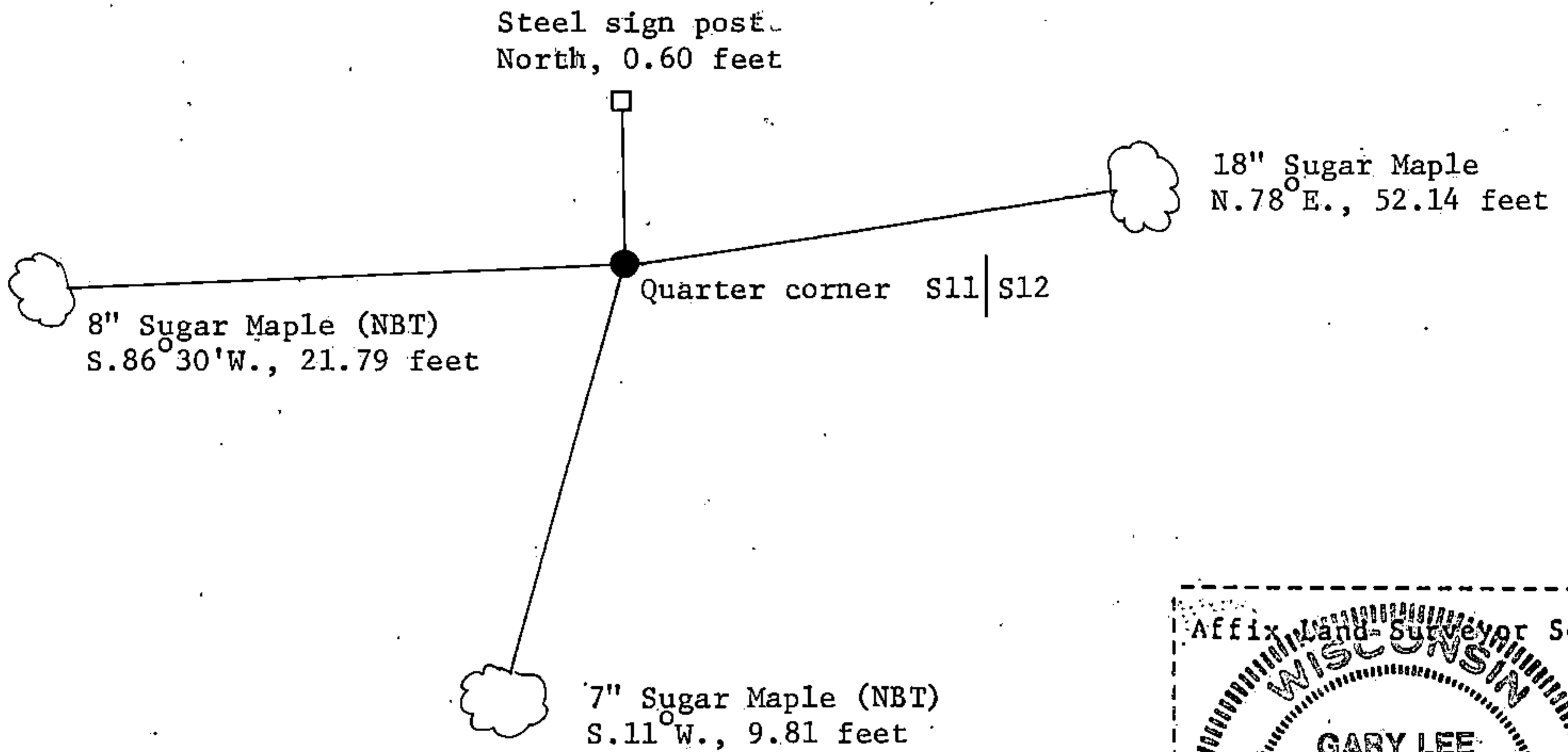
(e) Describe any material discrepancy between the location of the corner as restored or reestablished and the location of that corner as previously restored or reestablished by distance and direction. Show the discrepancy on the plan view drawing under (d), above. Show the distances between the corner as previously restored or reestablished and (1) the corner as restored or reestablished, and (2) to at least 2 of the witness monuments shown on the drawing in (d), above.

See drawing below

(f) Was the corner restored through acceptance of (1) an obliterated evidence location, or, (2) a found perpetuated location?

Restored through acceptance of a found perpetuated location.

(g&h) Was the corner reestablished through lost corner proportionate methods? If so, show the method, including the directions and distances to other public land survey corners used as evidence or used for proportioning in determining the corner location?



Gary L. Pisoni

(i) I, Gary L. Pisoni
 (type or print name) certify that the corner location shown on this record was determined by me or under my direction and control and that this U.S. Public Land Survey Monument Record is correct and complete to the best of my knowledge and belief.

Signature Gary L. Pisoni Date 11-2-87

Survey requested by: Gregory F. Hermett Date 2/2/88
 ACTING District Ranger