

U.S. PUBLIC LAND SURVEY MONUMENT RECORD

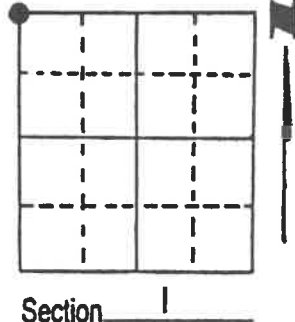
Note: This form is intended and designed to fulfill all requirements of Wisconsin Administrative Code, Chapter A-E 5.02, U.S. Public Land Survey Monument Record (3) (a) (b) (c) (d) (e) (f) (g) (h) (i). An additional sheet may be added if necessary to conform with said requirements.

(a) Corner location: Township 40 North

Range 12 East/West

Town/City/Village Hiles

County Forest



(b) (f) (g) (h) Description of monument found at this corner and if it was accepted, state all evidence (material, testimonial, occupational, plats, records, other monuments) used as a basis for accepting. If not accepted or if nothing was found, state evidence used as basis for establishing location. If reestablished through lost corner proportionate methods, indicate all monuments, distances and directions used to establish.

Found 6" diameter brass capped round concrete monument stamped identifying the corner. The monument was re-established from the 1941 General Land Office Dependent Resurvey.

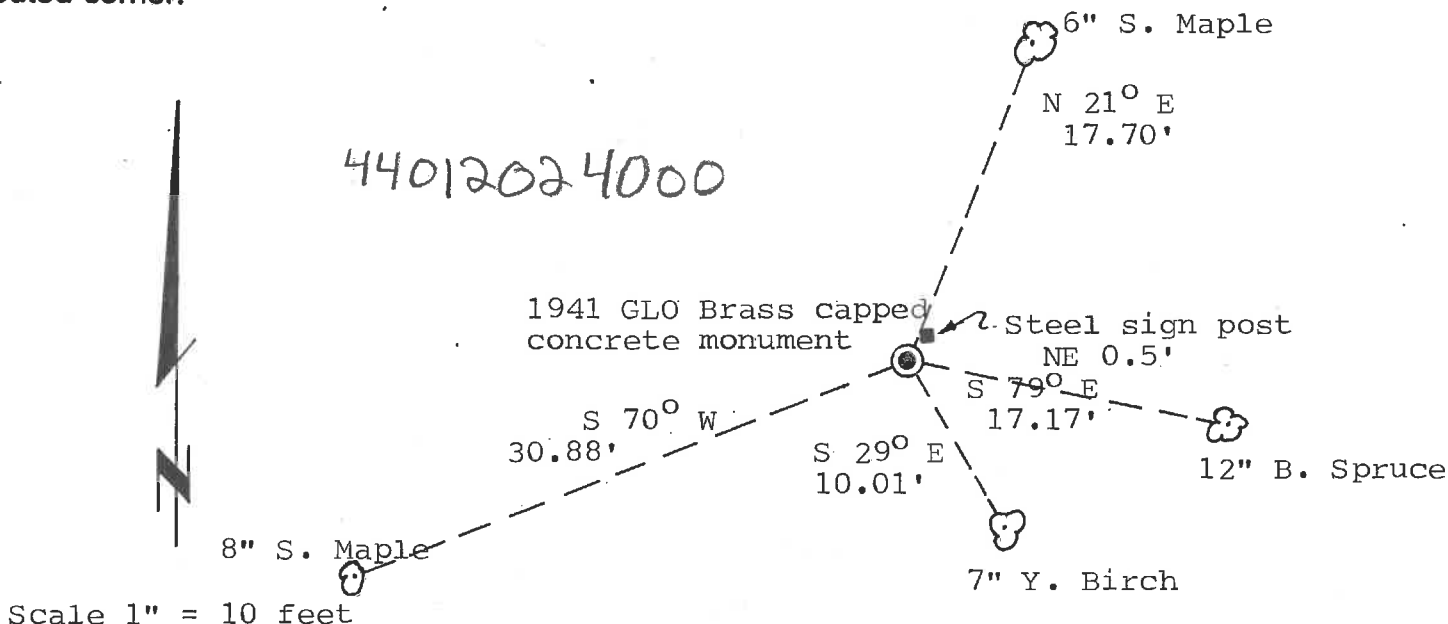
BT's recovered from the 1941 Resurvey:

12" Birch Stump S 10° W 20.7 feet
26" Y. Birch Stub S 76° E No scribing visible.

Other BT's found: 7" Y. Birch S 29° E 10.01 feet
8" S. Maple S 70° W 30.88 feet

REGISTER'S OFFICE!
Forest County, Wis.
Received for record this 9th day
of December, 1988 at
10:10 o'clock A.M. and recorded
in Vol. CORNER RESTORATIONS
page A-21
Paul Aschenbrenner
Register of Deeds

(c) (d) (e) Plan view of corner with ties to at least 4 witness monuments. If in disagreement with previously established corner, show the distances between the two corners and also indicate the ties to the disputed corner.



Note: Measurements are to nail set in rootcrown of tree.

(i) I, Stephen J. Favorite RLS#S-1616
(type or print name) certify that the corner location on this record was determined by me or under my direction and control and that this U.S. Public Land Survey Monument Record is correct and complete to the best of my knowledge and belief.

Stephen J. Favorite April 9, 1988
Signature
Survey requested by: Camela Gjorki Date 1/17/88
District Ranger Date



Index No. A-21