

U.S. PUBLIC LAND SURVEY MONUMENT RECORD

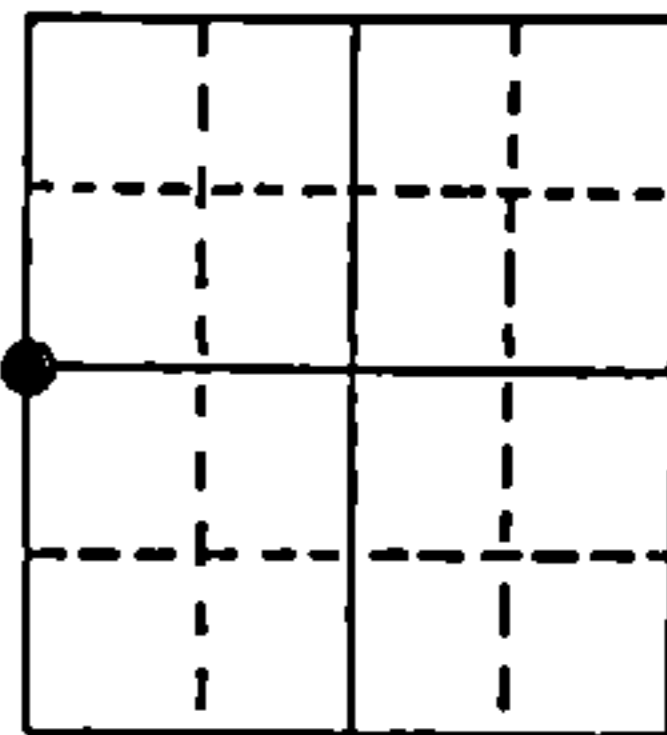
Note: This form is intended and designed to fulfill all requirements of Wisconsin Administrative Code, Chapter A-E 5.02, U.S. Public Land Survey Monument Record (3) (a) (b) (c) (d) (e) (f) (g) (h) (i). An additional sheet may be added if necessary to conform with said requirements.

(a) Corner location: Township 40 North

Range 12 East/West

Town/City/Village _____ Hiles _____

County _____ Forest _____



Section 1

(b) (f) (g) (h) Description of monument found at this corner and if it was accepted, state all evidence (material, testimonial, occupational, plats, records, other monuments) used as a basis for accepting. If not accepted or if nothing was found, state evidence used as basis for establishing location. If reestablished through lost corner proportionate methods, indicate all monuments, distances and directions used to establish.

Found 2" diameter brass capped iron pipe stamped identifying the corner. The monument was re-established from the 1941 General Land Office Dependent Resurvey.

BT's recovered from the 1941 Resurvey:

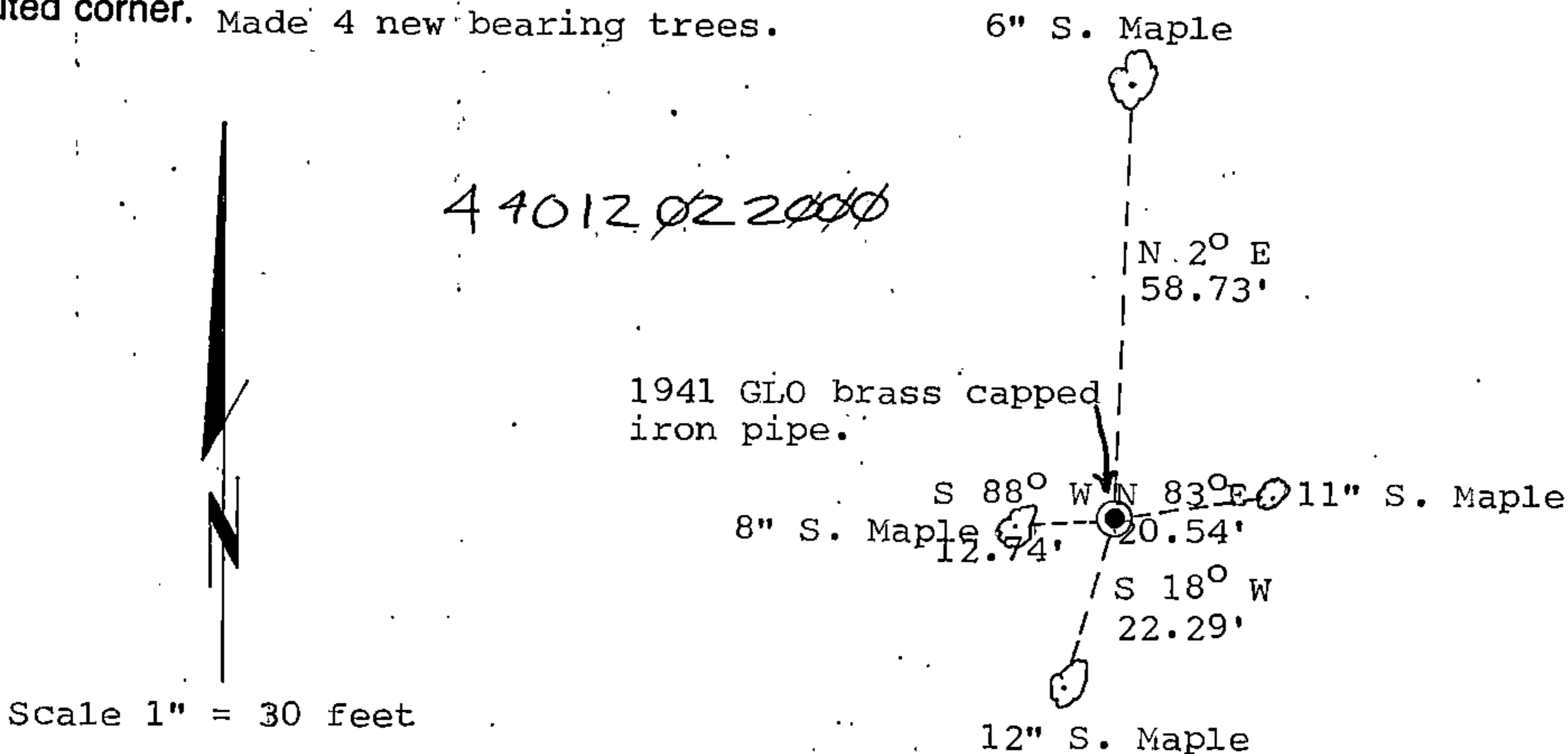
17" S. Maple (dying)	S 77.1/2° E	7.26 feet
7" Maple Stump	N 81 1/2° W	14.52 feet

REGISTER'S OFFICE
Forest County, WI

Received for record this 9th day
of December A.D., 1988
at 10:10 o'clock A. M. and
recorded in Vol CORNER REST.

on page 521
Paul Aschenbrenner
REGISTER

(c) (d) (e) Plan view of corner with ties to at least 4 witness monuments. If in disagreement with previously established corner, show the distances between the two corners and also indicate the ties to the disputed corner. Made 4 new bearing trees.



Note: measurements are to nail set in rootcrown of tree.

(i) I, Stephen J. Favorite RLS#S-1616

(type or print name) certify that the corner location on this record was determined by me or under my direction and control and that this U.S. Public Land Survey Monument Record is correct and complete to the best of my knowledge and belief.

Stephen J. Favorite April 8, 1988

Signature Survey requested by; Camela Gyorzi Date 11/17/88
District Ranger Date



Index No. C-21