

CERTIFIED LAND CORNER RESTORATION

State of Wisconsin }
County of Forest } ss.

I, Jean F. Resvick, do hereby certify that on the 21st day of October, 1975, I found evidence of the Southeast Section corner of Section 35 Township 39 North Range 14 East, Fourth Principal Meridian, as described hereon; and that from this evidence I established a new monument and accessories as described hereon to perpetuate the original location of this corner:

Description of original monument and accessories and subsequent restorations:

- Survey in 1858 by Alfred Millard
- 80.00 ch. West between Sections 1 and 36
- Set post
- Y. Birch, 12, N58W, 67 lks
- Hemlock 12, N38E, 36 lks
- Y. Birch 21, S57E, 62 lks
- Y. Birch 24, South, 47 lks

Description of corner evidence found:

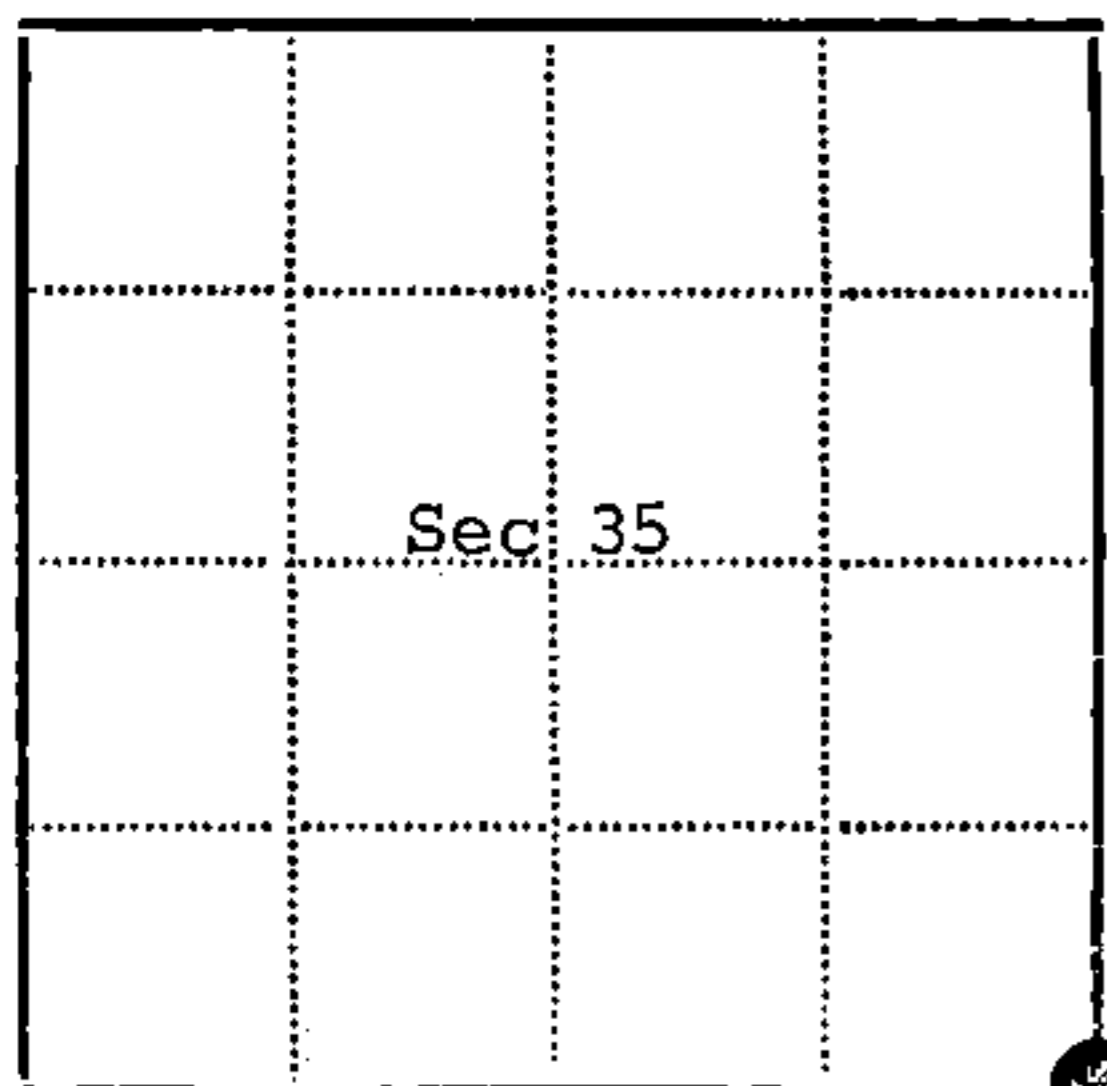
Old State Highway 139 runs North and South, road intersection to the West. This intersection has been used and accepted local as the Section Corner. No evidence of original bearing trees were found. The road intersection was excavated and no corner evidence was found. This corner was then established by accepting the center line road intersection as the best available evidence which is in relation to all natural calls given up to a mile distance.

Description of monument and accessories I established to perpetuate the location of this corner:

At the established road intersection I set a 2 inch inside diameter galvanized iron pipe 3 feet long, filled with concrete, with brass cap stamped T39N, R14E, S35, S36, S2, S1, T38N, 1975, S802. Monument set 8 inches below surface of road and referenced to the following blazed and scribed new bearing trees.

- Red Pine 12, N62E, 41.43 feet
- Red Pine 9, S57E, 55.11 feet
- Red Pine 12, N46W, 53.25 feet.
- No trees available in Southwest.

43914350000



● - Corner monument restored
□ -

Resident witnesses.....

Dated at Rhinelander Wisconsin, this 21st day of October 1975.

Signature *Jean F. Resvick* Title Land Surveyor
(County Surveyor, Registered Land Surveyor, or other duly authorized official)

Surveyors Registration No. S-802 DOCUMENT NUMBER 108563

Office of Register of Deeds County of Forest

I hereby certify that the within instrument was filed in this office for record on the 11th day of January 1976, and was filed in Book No. Page No. of County Records.

Signature *Eugene Statynny* Title Register of Deeds

Township 39 North Range 14 East Section 35 Index No. Z-21 Page No.

221

232463

NOV 23 2020

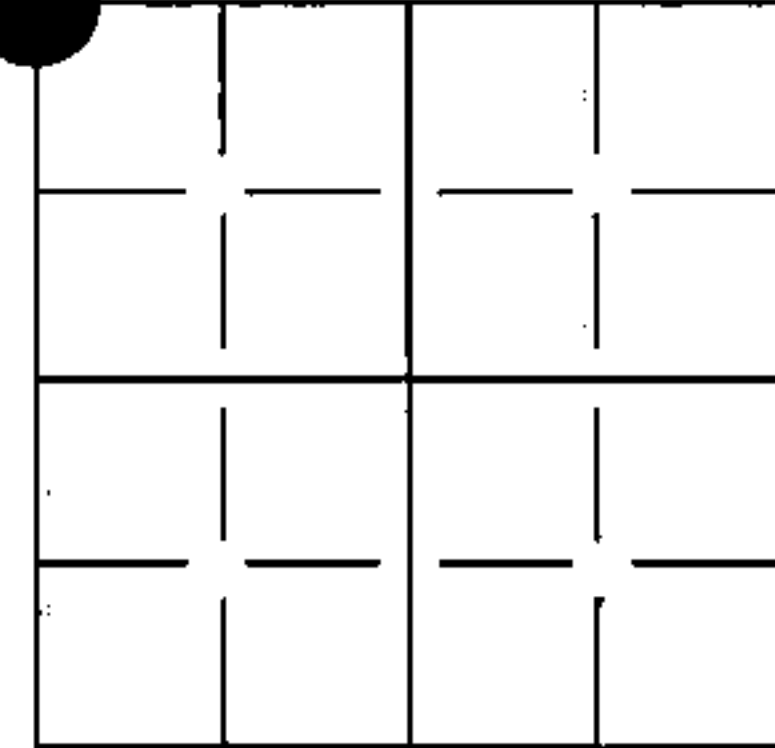
Time: 8:30 A.M.
Vol.: Corner Restoration
Page Number: A-21

U S PUBLIC LAND SURVEY MONUMENT RECORD

NOTE: This form is intended and designed to fulfill all requirements of Wisconsin Administrative Code, Chapter A-E 7.08 U.S. Public Land Survey Monument Record (3) (a-i)

(a) CORNER LOCATION
NW CORNER OF SECTION 1
TOWNSHIP 38 NORTH
RANGE 14 EAST OF THE 4TH PM
TOWN OF POPPLE RIVER
COUNTY OF FOREST

WISCORS - FOREST COUNTY
N: 657884.26 USft
E: 888959.11 USft
Datum: NAD83 (2011)
GNSS Method RTN - Direct
GNSS Control WISCORS VRS



(b) HISTORY OF ORIGINAL CORNER ESTABLISHMENT

Original Surveyor: Alfred Millard

Original Accessories:

Date of Survey: Commenced: June 30, 1857
Completed: July 7th, 1858

12" Y. Birch, N58°W, 67 links
12" Hemlock, N38°E, 36 links
20" Y. Birch, S57°E, 62 links
24" Hemlock, South, 47 links

(b)(f)(g)(h) Description of monument found at this corner and if it was accepted, state all evidence (material, testimonial, occupational, plats, records, other monuments) used as a basis for accepting. If not accepted or if nothing was found, state evidence used as basis for establishing location. If re-established through lost corner proportionate methods, indicate all monuments, distances and directions used to establish. Indicate type of monument and sign post found or set.

1975 - Jean Resvick set a 2" diameter galvanized iron pipe with stamped brass cap at road intersection and verified natural calls. Made the following bearing trees:

12" R. Pine, N62°E, 41.43' 12" R. Pine, N46°W, 53.25'
9" R. Pine, S57°E, 55.11'

1985 - William B. Cochrane found monument as described above and verified the following bearing trees:

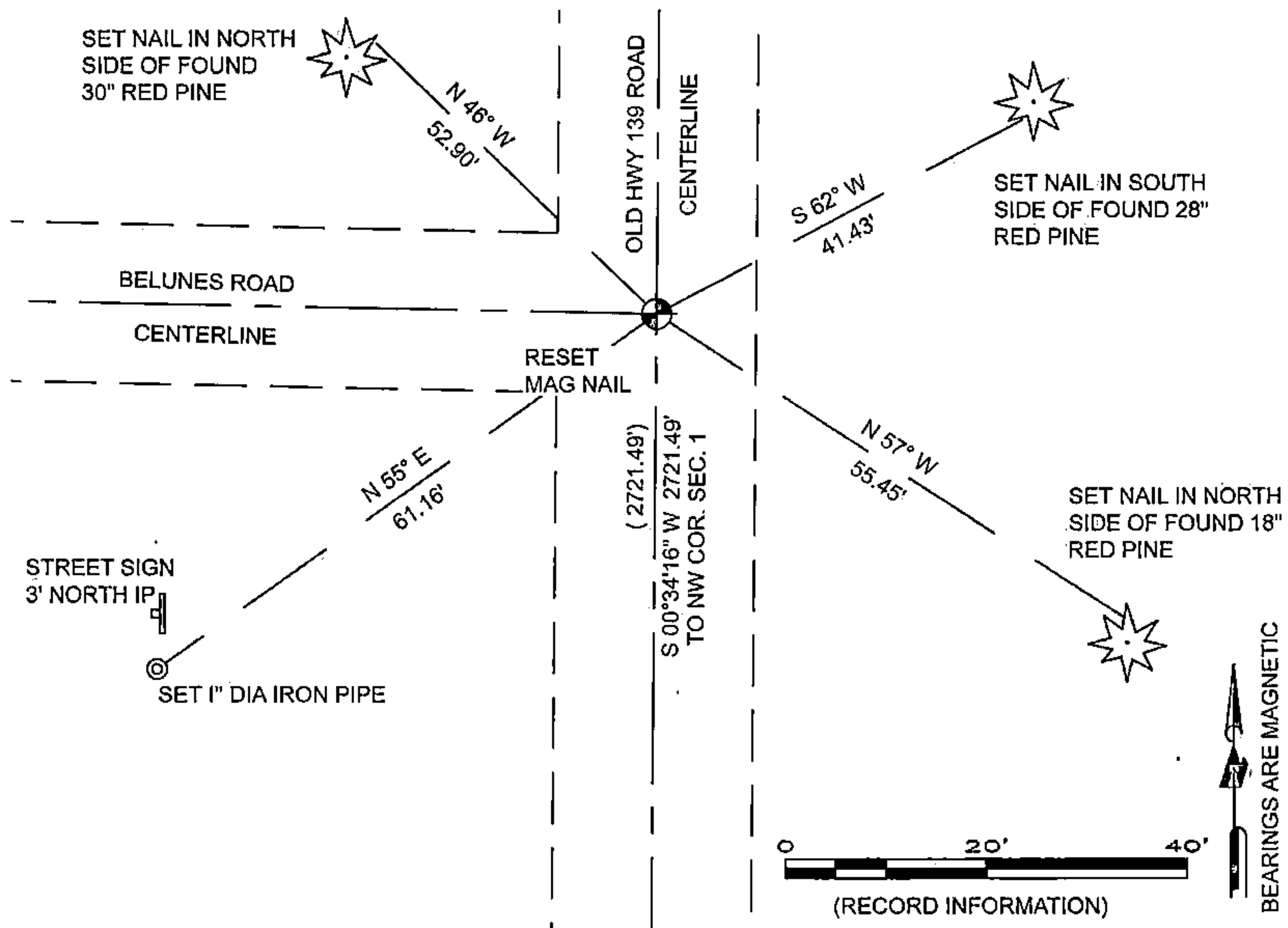
14" R. Pine, N62°E, 41.43' 15" R. Pine, N46°W, 53.25'
12" R. Pine, S57°E, 55.11'

2005 - Michael A. Trembl found monument as described and referenced on a Plat of Survey dated 11/14/2005

2019 - Jeffrey T. Brock computed the position from ties and referenced on a Survey Map dated 10/29/2019

May 2020 - I set a MAG nail from ties over magnetic attraction and made new ties as referenced below

The coordinate value shown has been verified by at least one of the following methods: 1) comparison to a previously GNSS determined published value, 2) the value is the average of two or more GNSS observations at a markedly different time, 3) one or more distances were measured back to the GNSS observed corner from temporary GNSS observed offset locations.

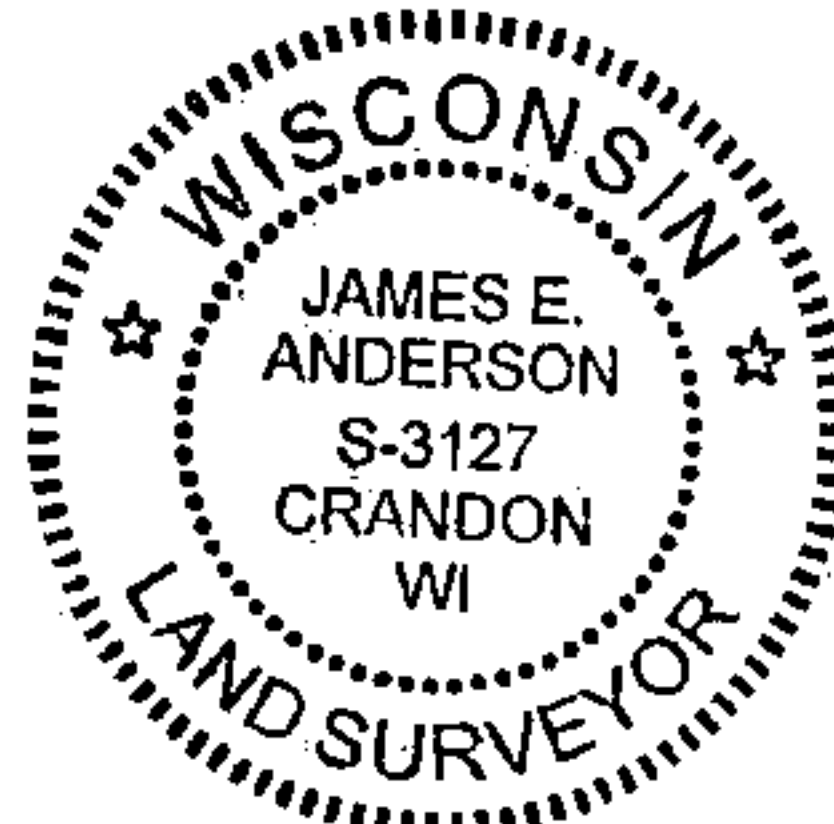


(i) I, James E Anderson, Professional Land Surveyor No. S-3127, hereby certify that the corner location on this record was determined by me or under my direction and control and that this U.S. Public Land Survey Monument Record is correct and complete to the best of my knowledge, and belief

James E Anderson
SIGNATURE

05/22/2020

DATE



A-21

4391435 0000

U.S. PUBLIC LAND SURVEY MONUMENT RECORD

Index No. A-21

State of Wisconsin }
County of Forest } ss.

I, William B. Cochrane, do hereby certify that on the 12th day of February, 1985, I found evidence of the Northwest Section corner of Section 1 Township 38, North, Range 14 East, Fourth Principal Meridian, as described hereon; and that from this evidence I established a new monument and accessories as described hereon to perpetuate the original location of this corner.

Resident witnesses:

David Brownell

Tony Tillman

History of original corner establishment:

Original Government Survey in 1858 by Alfred Millard. In 1975, Jean Resvick, a Land Surveyor with the U.S. Forest Service, found an established road intersection which is in relation to natural calls. Set a 2" diameter galvanized iron pipe, 3 feet long, with a brass cap stamped: T39N R15E, S1, S2, S35, S36, T38N, 1975, S-802. From which the following bear:

R. Pine	12"	N62°E	41.43 feet
R. Pine	9"	S57°E	55.11 feet
R. Pine	12"	N46°W	53.25 feet

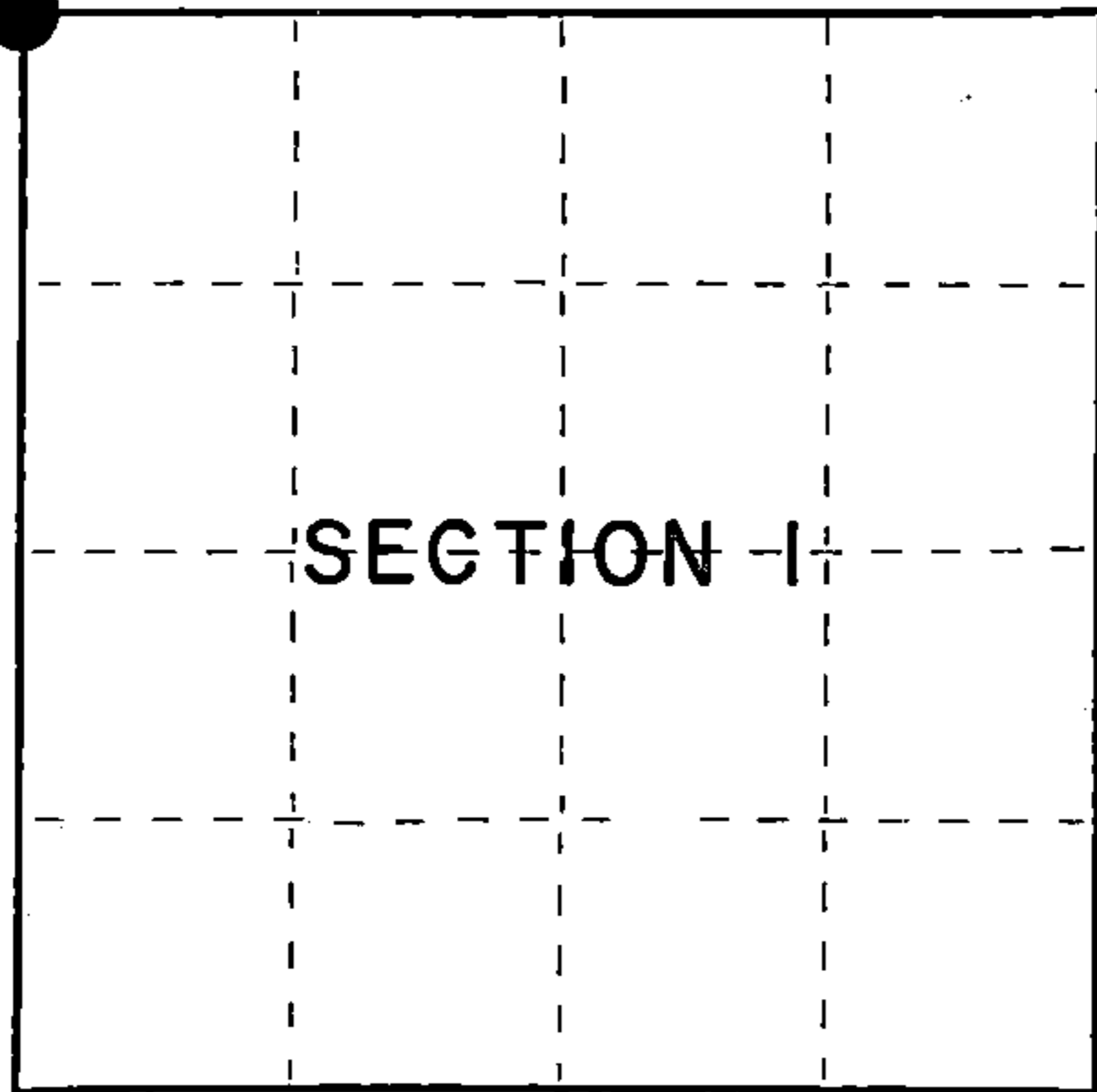
Description of corner evidence found:

Monument as described and in place, from which the following bear:

R. Pine	14"	N62°E	41.43 feet
R. Pine	12"	S57°E	55.11 feet
R. Pine	15"	N46°W	53.25 feet

Description of monument and accessories I established to perpetuate the original location of this corner.

No bearing trees available in the SW quadrant.



○ = Corner monument restored.

Dated at Hiles, Wis., this 12th day of March, 1985

Signature William B. Cochrane Title Land Surveyor Registration No. S-1107
(County Surveyor, Registered Land Surveyor, or other duly authorized official)

Office of Register of Deeds, County of Forest, I hereby certify that the within instrument was filed in this office for record on the 24th day of April, 1985 at 1:00 o'clock P. M.

Paul Aschenbrenner
(Register of Deeds)

By.....Deputy

FORM NO. 985-A

H.C. Miller Company

Stock No. 26273

Document Number 127884

4391435 0000

(e) Describe any material discrepancy between the location of the corner as restored or reestablished and the location of that corner as previously restored or reestablished by distance and direction. Show the discrepancy on the plan view drawing under (d), above. Show the distances between the corner as previously restored or reestablished and (1) the corner as restored or reestablished, and (2) to at least 2 of the witness monuments shown on the drawing in (d), above.

See drawing below.

(f) Was the corner restored through acceptance of (1) an obliterated evidence location, or, (2) a found perpetuated location?

Restored through acceptance of a found perpetuated location.

(g&h) Was the corner reestablished through lost corner proportionate methods? If so, show the method, including the directions and distances to other public land survey corners used as evidence or used for proportioning in determining the corner location?

15" R. Pine
N46°W, 53.25 feet



Section Corner

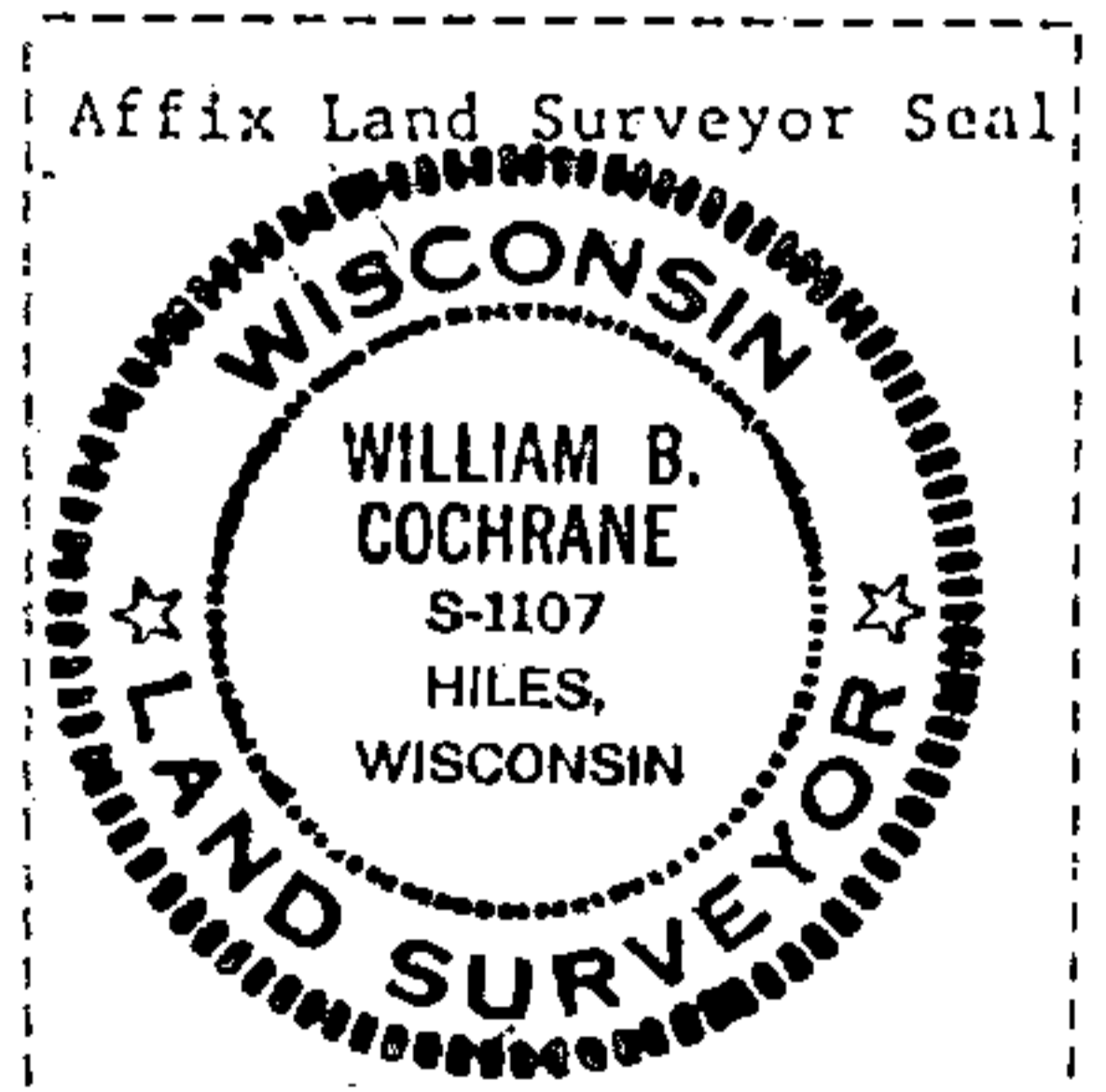
T39N		
S35		S36
S2		S1
T38N		



14" R. Pine
N62°E, 41.43 feet



12" R. Pine
S57°E, 55.11 feet



(i) I, William B. Cochrane
(type or print name) certify that the corner location shown on this record was determined by me or under my direction and control and that this U.S. Public Land Survey Monument Record is correct and complete to the best of my knowledge and belief.

William B. Cochrane March 12, 1985
Signature Date

U.S. PUBLIC LAND SURVEY MONUMENT RECORD

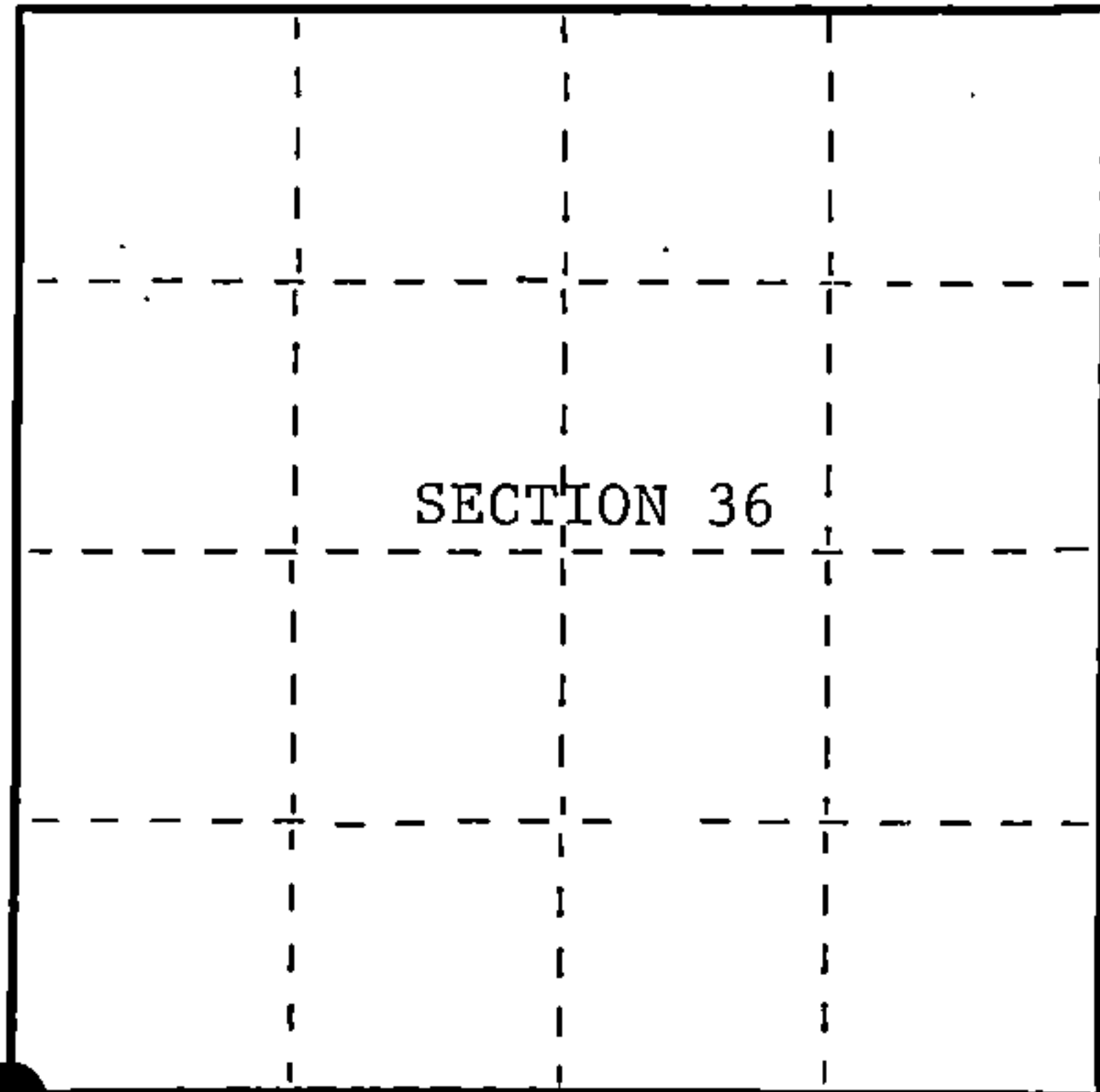
Index No. Z-21

State of Wisconsin }
County of Forest } ss.

I, William B. Cochran, do hereby certify that on the 7th day of September, 1988 I found evidence of the Southwest Section corner of Section 36 Township 40 North, Range 14 East, Fourth Principal Meridian, as described hereon; and that from this evidence I established a new monument and accessories as described hereon to perpetuate the original location of this corner.

Resident witnesses:

State Plane Co-ordinates
N- 268,772.8770
E-2,322,030.0740



○ = Corner monument restored.

History of original corner establishment:

Original Government Survey in 1858 by Alfred Millard.

Dependent Resurvey in 1945 by Hugh B. Crawford. From the remains of original bearing trees, set a concrete monument, 6 inches in diameter, 24 inches long, with a 1 inch diameter brass cap marked; T40N, R14E, S35, S36, S1, S2, T39N, 1945. Blazed and scribed the following bearing trees;

Maple	22"	N80°00'E	12½ lks.
Maple	8"	S38°15'E	226 lks.
W. Pine	18"	S50°00'W	197½ lks.
Maple	30"	N49°00'W	34 lks.

Description of corner evidence found:

Found monument as described and in place, from which the following bear;

Maple	23"	N80°00'E	12½ lks. (8.25 feet)
Maple	14"	S38°15'E	226 lks. (149.16 feet)
W. Pine	28"	S50°00'W	197½ lks. (130.35 feet)
Maple	30"	N49°00'W	34 lks. (22.44 feet)

Description of monument and accessories I established to perpetuate the original location of this corner.

None

Dated at Hiles, Wis., this 14th day of February, 1989

Signature: William B. Cochran, Title: Land Surveyor, Registration No. S-1107
(County Surveyor, Registered Land Surveyor, or other duly authorized official)

Office of Register of Deeds, County of Forest, I hereby certify that the within instrument was filed in this office for record on the 12th day of April, 1989 at 9:10 o'clock A.M.

Paul Aschenbrenner
(Register of Deeds)

By Deputy

FORM NO. 985-A

H.C. Miller Company

Stock No. 26273

DOCUMENT NUMBER 137192

43914350000

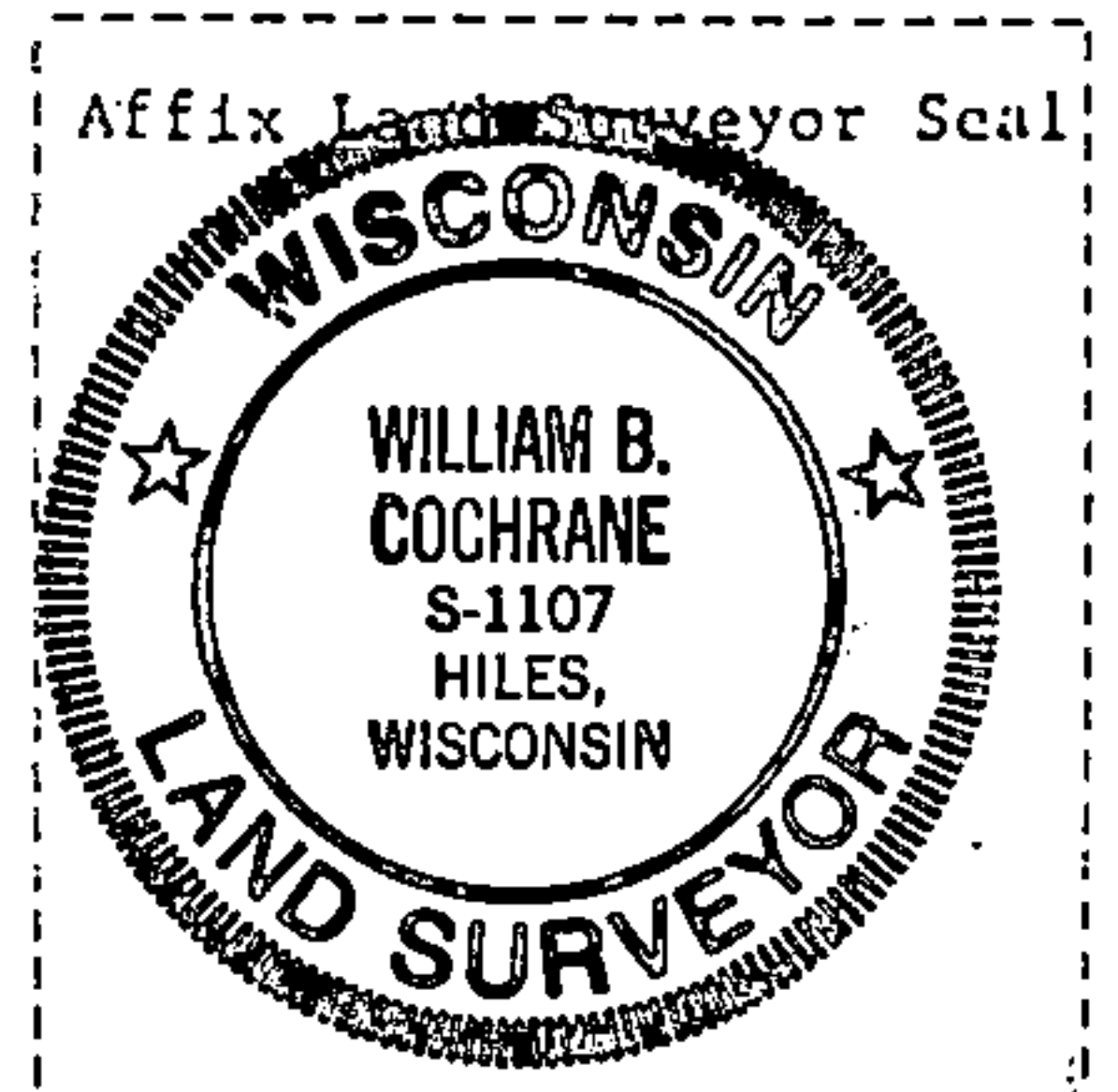
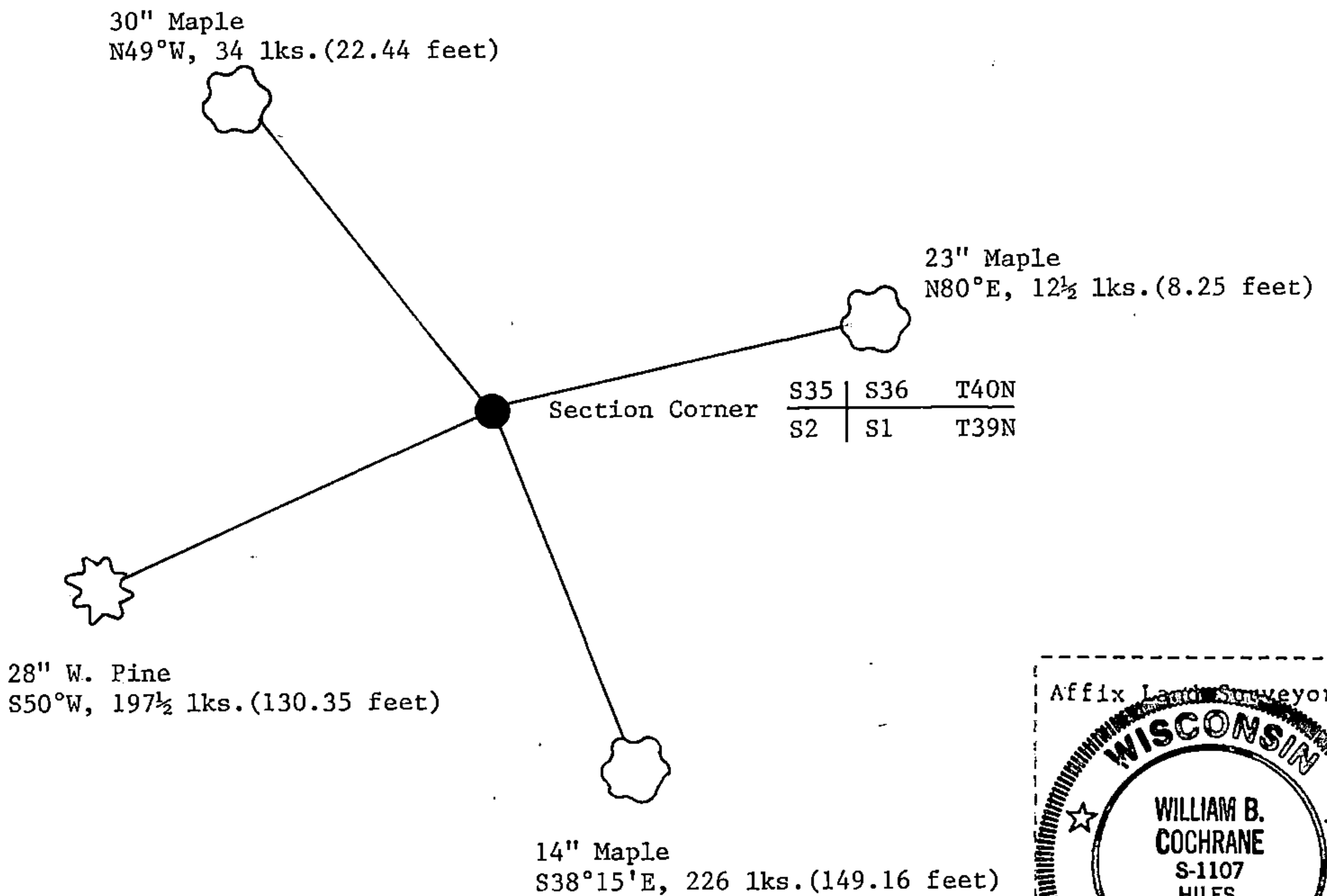
(e) Describe any material discrepancy between the location of the corner as restored or reestablished and the location of that corner as previously restored or reestablished by distance and direction. Show the discrepancy on the plan view drawing under (d), above. Show the distances between the corner as previously restored or reestablished and (1) the corner as restored or reestablished, and (2) to at least 2 of the witness monuments shown on the drawing in (d), above.

See drawing below.

(f) Was the corner restored through acceptance of (1) an obliterated evidence location, or, (2) a found perpetuated location?

Restored through acceptance of a found perpetuated location.

(g&h) Was the corner reestablished through lost corner proportionate methods? If so, show the method, including the directions and distances to other public land survey corners used as evidence or used for proportioning in determining the corner location?



(i) I, William B. Cochrane
(type or print name) certify that the corner location shown on this record was determined by me or under my direction and control and that this U.S. Public Land Survey Monument Record is correct and complete to the best of my knowledge and belief.

William B. Cochrane February 14, 1989
Signature Date

Survey requested by: [Signature] 3-22-87
District Ranger : : Date

U.S. PUBLIC LAND SURVEY MONUMENT RECORD

Index No. **Z-21**

State of Wisconsin }
County of Forest } ss.

I, William B. Cochrane, do hereby certify that on the 12th day of February, 1985, I found evidence of the Southwest Section corner of Section 36 Township 39, North, Range 14 East, Fourth Principal Meridian, as described hereon; and that from this evidence I established a new monument and accessories as described hereon to perpetuate the original location of this corner.

Resident witnesses:

David Brownell

Tony Tillman

History of original corner establishment:

Original Government Survey in 1858 by Alfred Millard. In 1975, Jean Resvick, a Land Surveyor with the U.S. Forest Service, found an established road intersection in relation to natural calls. Set a 2" diameter galvanized iron pipe, 3 feet long, with a brass cap stamped: T39N R15E, S1, S2, S35, S36, T38N, 1975, S-802. From which the following bear:

R. Pine	12"	N62°E	41.43 feet
R. Pine	9"	S57°E	55.11 feet
R. Pine	12"	N46°W	53.25 feet

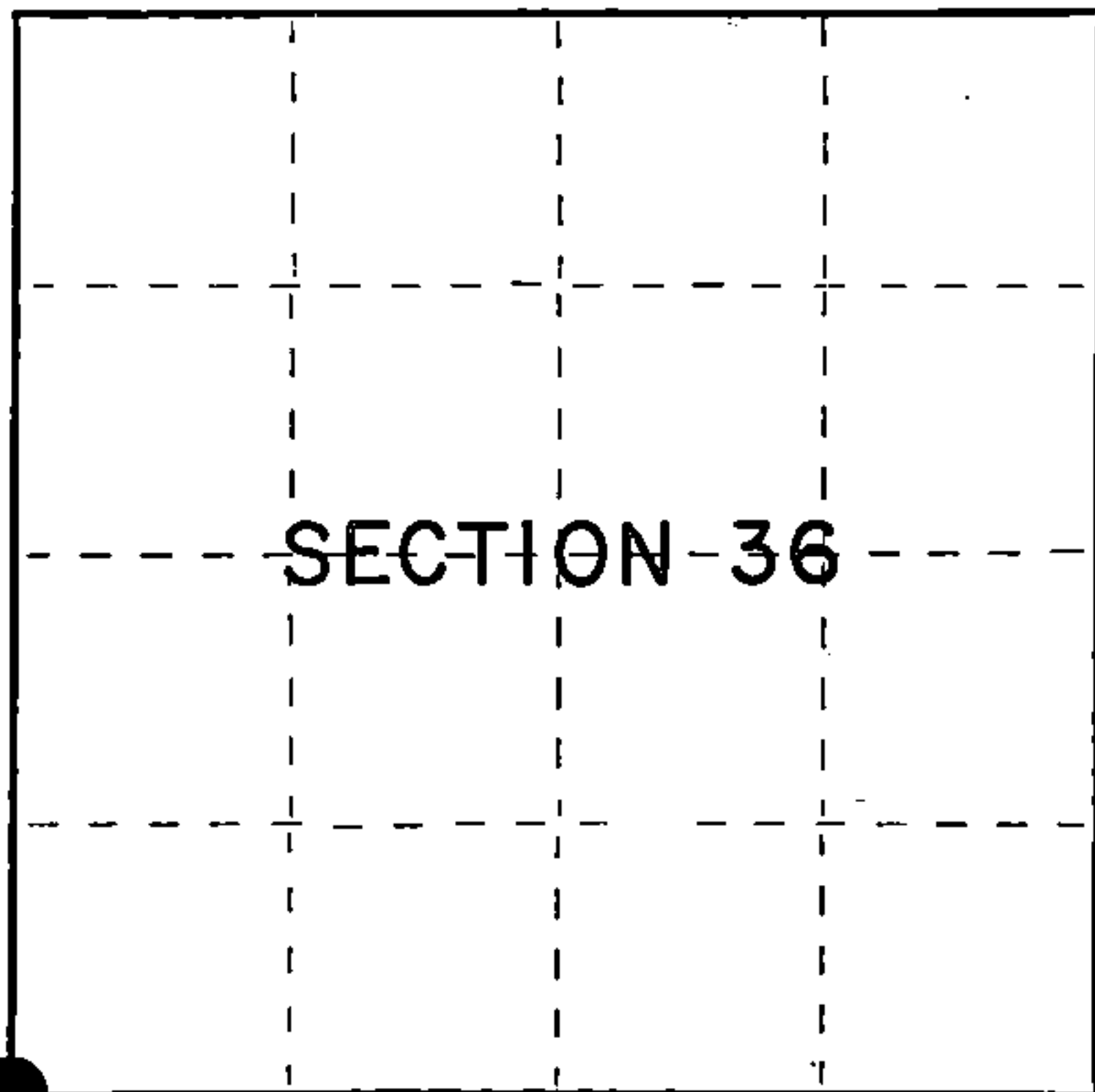
Description of corner evidence found:

Monument as described and in place, from which the following bear:

R. Pine	14"	N62°E	41.43 feet
R. Pine	12"	S57°E	55.11 feet
R. Pine	15"	N46°W	53.25 feet

Description of monument and accessories I established to perpetuate the original location of this corner.

No bearing trees available in the SW quadrant.



○ = Corner monument restored.

Dated at Hiles, Wis., this 12th day of March, 1985

Signature William B. Cochrane Title Land Surveyor Registration No. S-1107
(County Surveyor, Registered Land Surveyor, or other duly authorized official)

Office of Register of Deeds, County of Forest, I hereby certify that the within instrument was filed in this office for record on the 24th day of April, 1985 at 1:00 o'clock P. M.

Paul Aschenbrenner
(Register of Deeds)

By.....Deputy

FORM NO. 985-A

H.C. Miller Company

Stock No. 26273

Document Number **127875**

43914350000

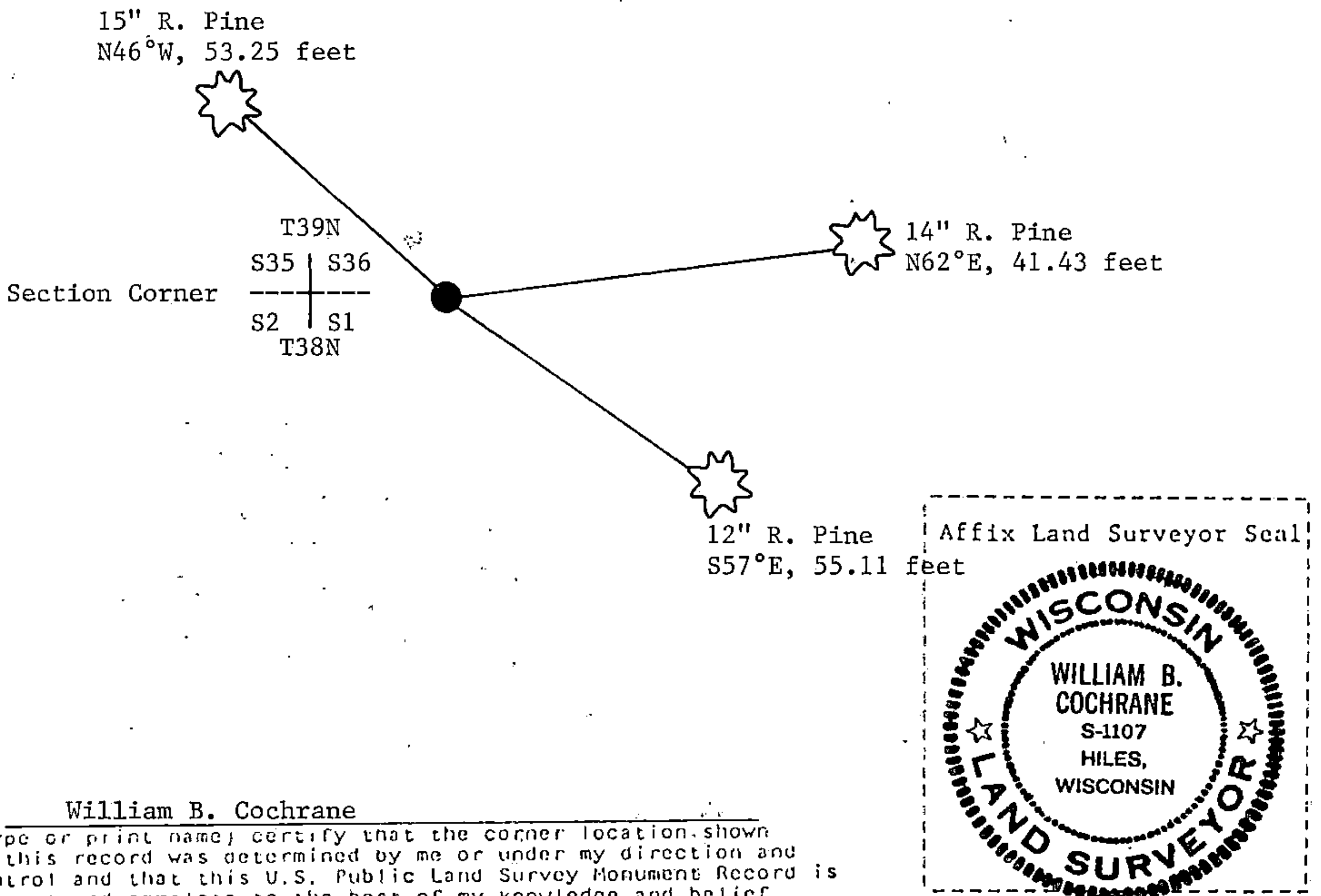
(e) Describe any material discrepancy between the location of the corner as restored or reestablished and the location of that corner as previously restored or reestablished by distance and direction. Show the discrepancy on the plan view drawing under (d), above. Show the distances between the corner as previously restored or reestablished and (1) the corner as restored or reestablished, and (2) to at least 2 of the witness monuments shown on the drawing in (d), above.

See drawing below.

(f) Was the corner restored through acceptance of (1) an obliterated evidence location, or, (2) a found perpetuated location?

Restored through acceptance of a found perpetuated location.

(g&h) Was the corner reestablished through lost corner proportionate methods? If so, show the method, including the directions and distances to other public land survey corners used as evidence or used for proportioning in determining the corner location?



(i) I, William B. Cochrane
(type or print name) certify that the corner location shown on this record was determined by me or under my direction and control and that this U.S. Public Land Survey Monument Record is correct and complete to the best of my knowledge and belief.

William B. Cochrane March 12, 1985
Signature Date