

U.S. PUBLIC LAND SURVEY MONUMENT RECORD

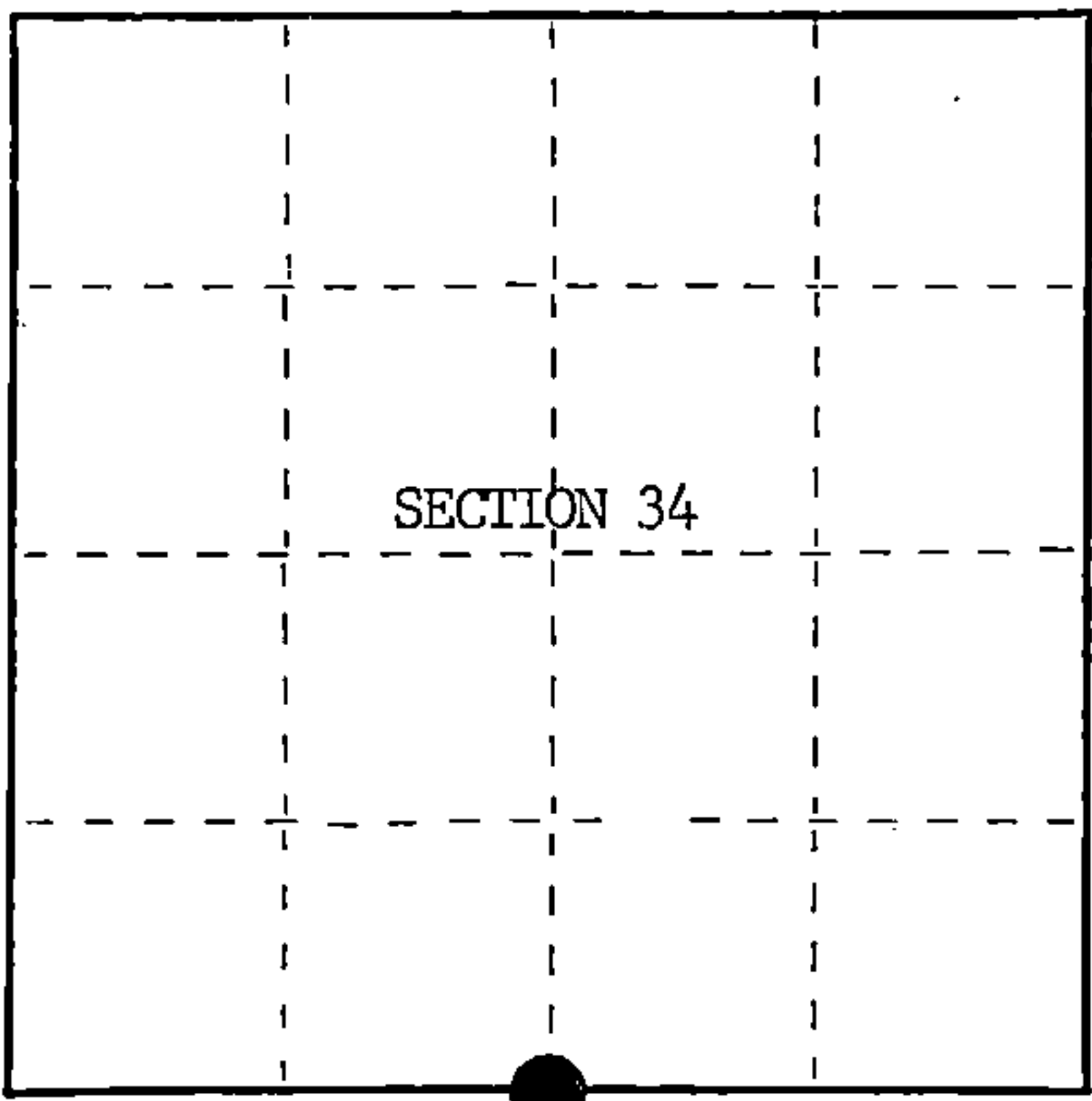
Index No. Z-15

State of Wisconsin }
County of Forest } ss.

I William B. Cochrane, do hereby
certify that on the 5th day
of September, 1985, I found
evidence of the South Quarter
corner of Section 34
Township 39 North, Range
14 East, Fourth Principal Meridian,
as described hereon; and that from this evidence
I established a new monument and accessories
as described hereon to perpetuate the original
location of this corner.

Resident witnesses:
David Brownell

State Plane Co-ordinates
N- 237,129.9090
E-2,324,617.7620



○ = Corner monument restored.

History of original corner establishment:

Original Government Survey in 1858 by Alfred Millard. West between Sections 34 and 3,
40.00 chs., set Quarter Section Post to Sections 3 and 34, from which the following bear;
Cedar 12" N40°E 19 lks.
Cedar 12" N30°W 10 lks.

On 1-28-37, Frank Baran, a Compassman with the U.S. Forest Service, set a Scribed Cedar
Stake, 2 feet above the ground, from which a 4" Balsam with a metal location poster
attached, bears S 4°W, 0.29 chains. Information recored on Form #874.

Description of corner evidence found:

Found scribed Cedar Post, from which a 9" Balsam with a Metal Location Poster attached,
bears S 4°W, 0.29 chains.

I accept the Scribed Cedar Post as the best available evidence for restoring
the corner position.

No original corner evidence was recovered.

Description of monument and accessories I established to perpetuate the original location of this corner.

In place of Scribed Cedar Post, set a 2½" diameter aluminum pipe monument, 5 feet
long, 4 feet in the ground, with an aluminum cap stamped; T39N, R14E, 1/4, S34, S3,
T38N, 1985, S-1107. From which the following new blazed and scribed bearing trees bear;

Cedar	12"	S51°E	11.32 feet
Cedar	13"	S64°W	22.80 feet
Steel Sign Post		NE	3.00 feet

Dated at Hiles, Wis., this 27th day of January, 1986

Signature William B. Cochrane Title Land Surveyor Registration No S-1107
(County Surveyor, Registered Land Surveyor, or other duly authorized official)

Office of Register of Deeds, County of Forest, I hereby certify that the within
instrument was filed in this office for record on the 11th day of March, 1987
at 3:30 o'clock P. M.

Paul Aschenbrenner
(Register of Deeds)

By Deputy

FORM NO. 985-A
H.C. Miller Company
ST. LOUIS, MO.

Stock No. 26273

DOCUMENT NUMBER 132407

43914 340020

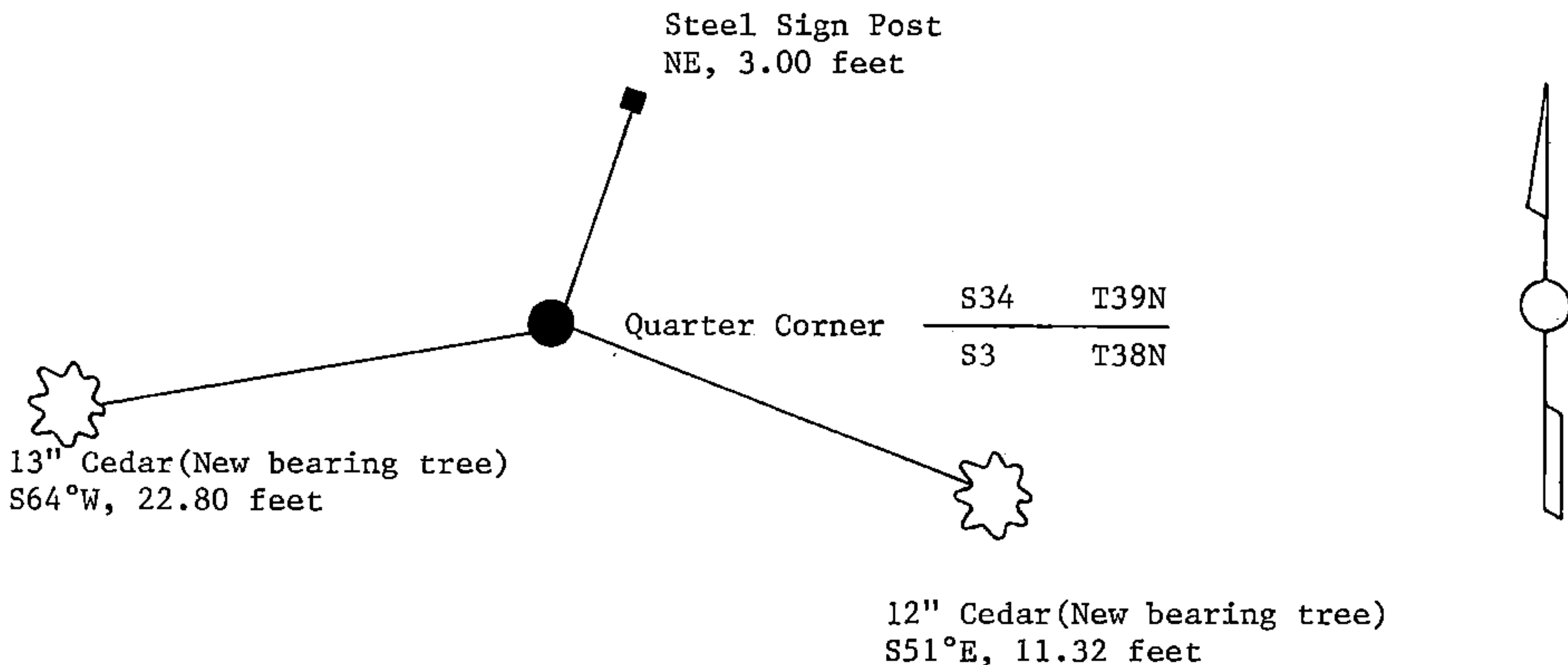
(e) Describe any material discrepancy between the location of the corner as restored or reestablished and the location of that corner as previously restored or reestablished by distance and direction. Show the discrepancy on the plan view drawing under (d), above. Show the distances between the corner as previously restored or reestablished and (1) the corner as restored or reestablished, and (2) to at least 2 of the witness monuments shown on the drawing in (d), above.

See drawing below.

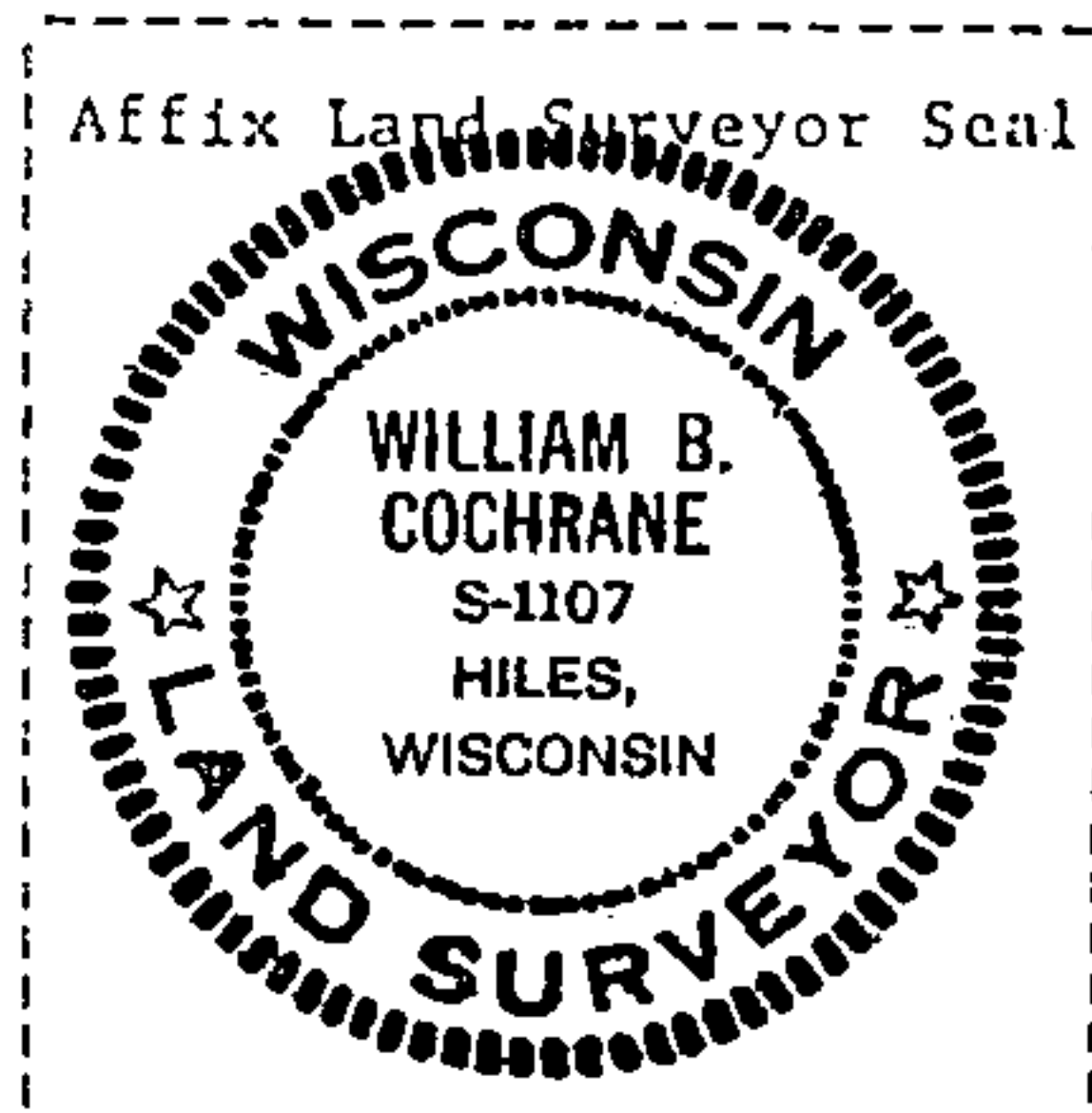
(f) Was the corner restored through acceptance of (1) an obliterated evidence location, or, (2) a found perpetuated location?

Restored from accepted evidence.

(g&h) Was the corner reestablished through lost corner proportionate methods? If so, show the method, including the directions and distances to other public land survey corners used as evidence or used for proportioning in determining the corner location?



(i) I, William B. Cochrane
(type or print name) certify that the corner location shown on this record was determined by me or under my direction and control and that this U.S. Public Land Survey Monument Record is correct and complete to the best of my knowledge and belief.



William B. Cochrane October 7, 1986
Signature Date

Survey requested by: Edward [Signature] 3-9-87
District Ranger Date

U.S. PUBLIC LAND SURVEY MONUMENT RECORD

Index No. A-15

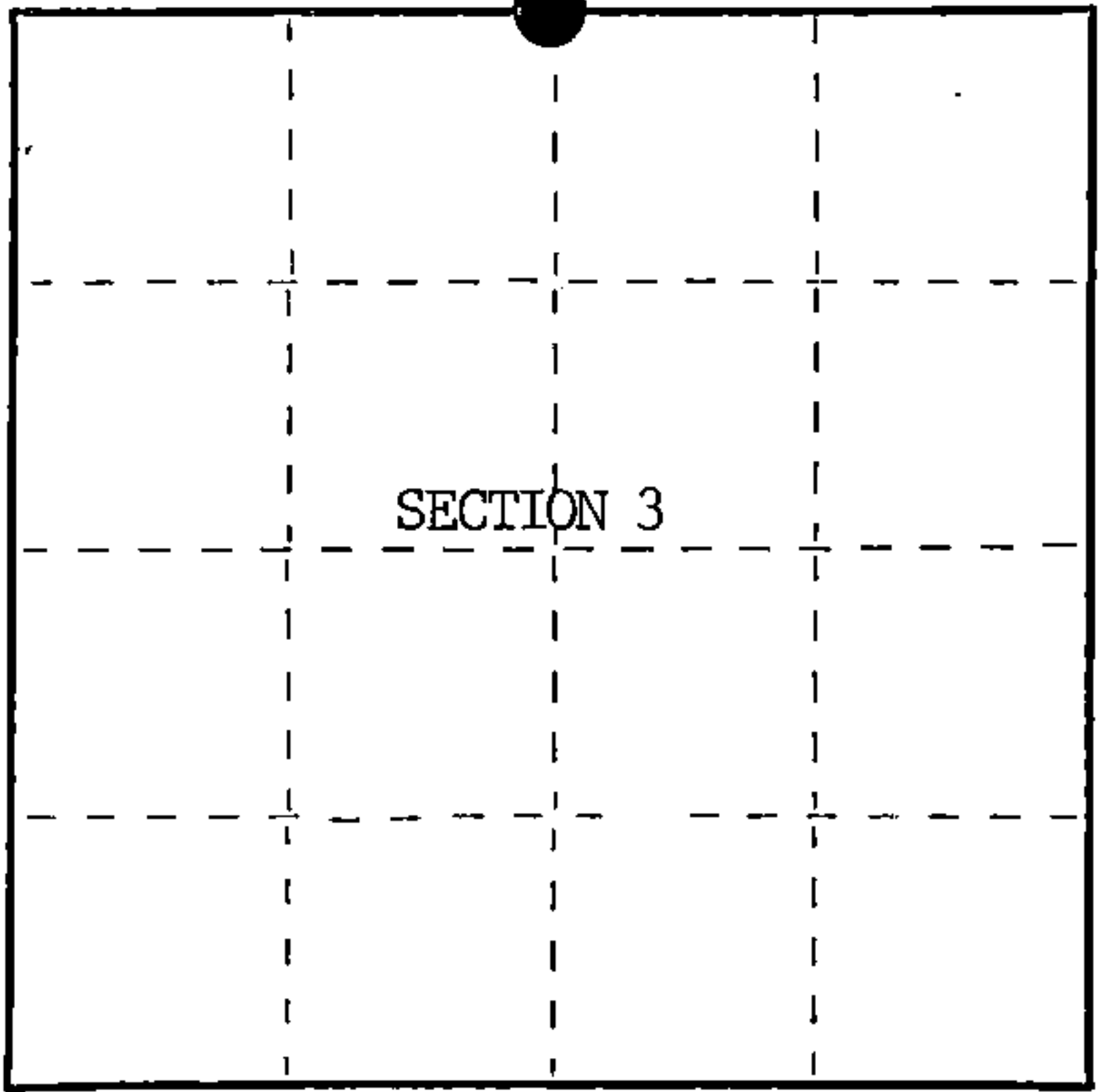
State of Wisconsin }
County of Forest } ss.

I William B. Cochrane, do hereby
certify that on the 5th day
of September, 1985, I found
evidence of the North Quarter
corner of Section 3
Township 38, North, Range
14 East, Fourth Principal Meridian,
as described hereon; and that from this evidence
I established a new monument and accessories
as described hereon to perpetuate the original
location of this corner.

Resident witnesses:

David Brownell

State Plane Co-ordinates
N- 237,129.9090
E-2,324,617.7620



○ = Corner monument restored.

History of original corner establishment:

Original Government Survey in 1858 by Alfred Millard. West between Sections 34 and 3,
40.00 chains, set Quarter Section Post to Sections 34 and 3, from which the following bear;
Cedar 12" N40°E 19 lks.
Cedar 12" N30°W 10 lks.

On 1-28-37, Frank Baran, a Compassman with the U.S. Forest Service, set a Scribed Cedar
Stake, 2 feet above the ground, from which a 4" Balsam with a metal location poster
attached, bears S 4°W, 0.29 chs. Information recorded on Form#874.

Description of corner evidence found:

Found Scribed Cedar Post, from which a 9" Balsam with a Metal Location Poster attached,
bears S 4°W, 0.29 chains.

I accept the Scribed Cedar Post as the best available evidence for restoring the
corner position.

No original corner evidence was recovered.

Description of monument and accessories I established to perpetuate the original location of this corner.

In place of Scribed Cedar Post, set a 2½" diameter aluminum pipe monument, 5 feet long,
4 feet in the ground, with an aluminum cap stamped; T39N, R14E, 1/4, S34, S3, T38N,
1985, S-1107. From which the following new blazed and scribed bearing trees bear;

Cedar	12"	S51°E	11.32 feet
Cedar	13"	S64°W	22.80 feet
Steel Sign Post		NE	3.00 feet

Dated at Hiles, Wis., this 27th day of January, 1986

Signature William B. Cochrane Title Land Surveyor Registration No. S-1107
(County Surveyor, Registered Land Surveyor, or other duly authorized official)

Office of Register of Deeds, County of Forest, I hereby certify that the within
instrument was filed in this office for record on the 11th day of March, 1987
at 3:30 o'clock P. M.

Paul Aschenbrenner
(Register of Deeds)

By Deputy

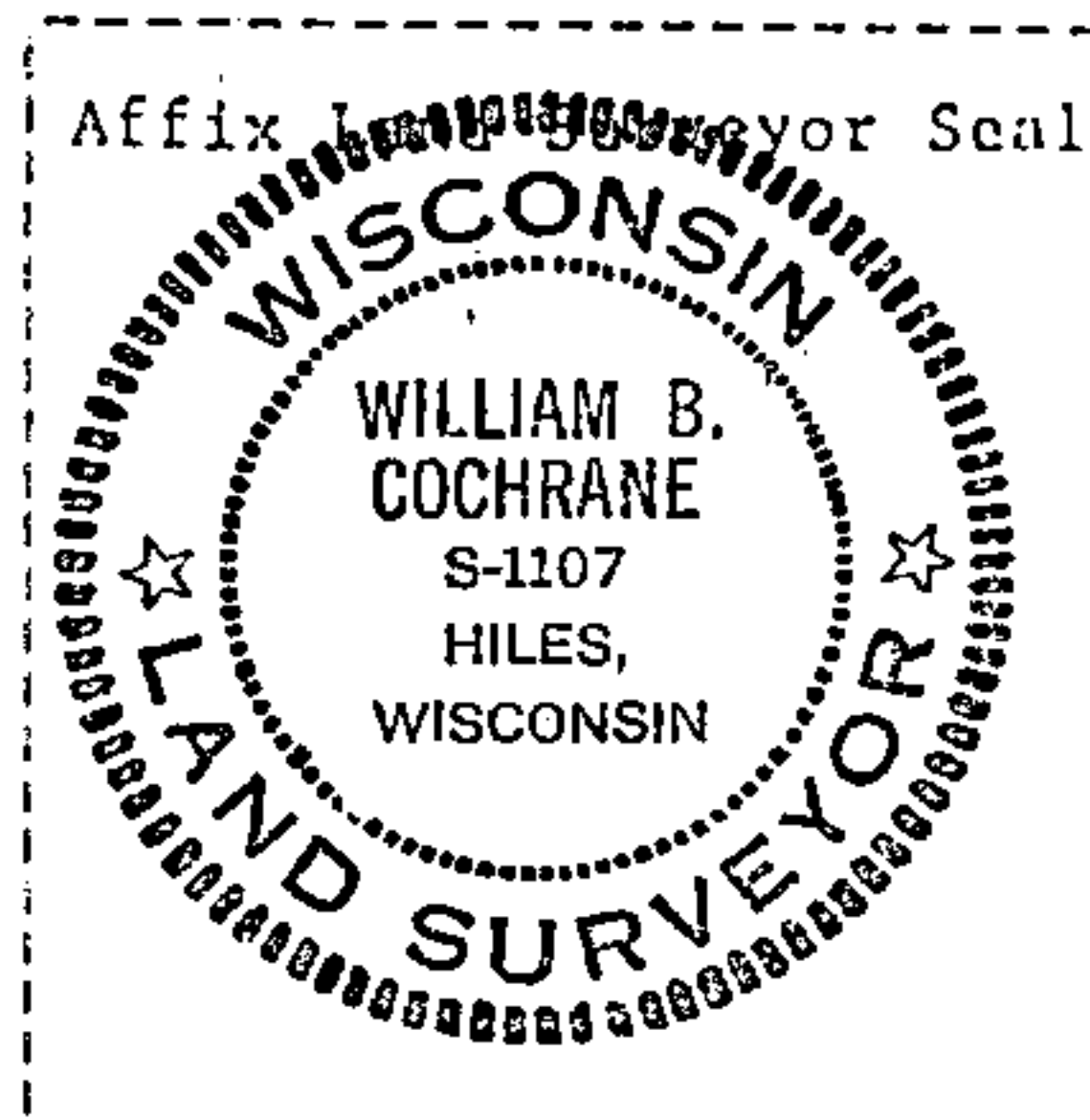
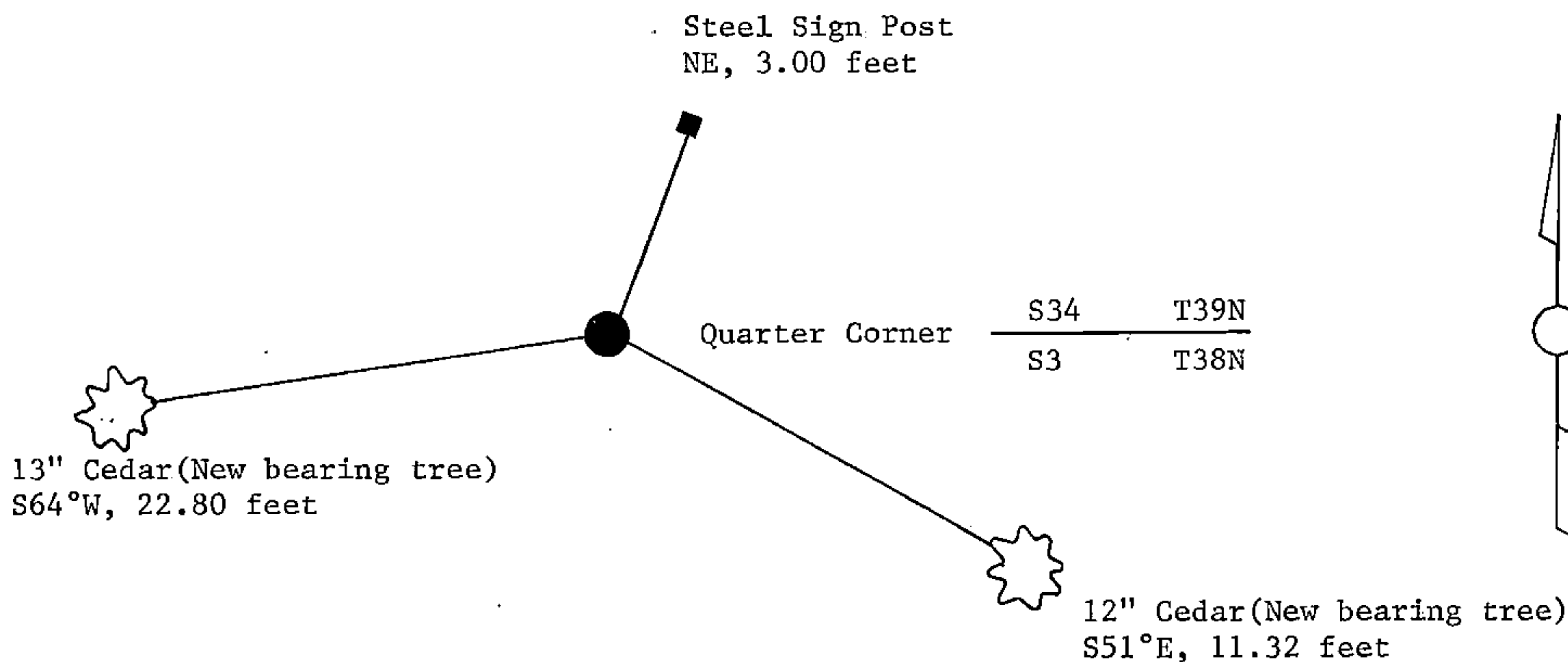
(e) Describe any material discrepancy between the location of the corner as restored or reestablished and the location of that corner as previously restored or reestablished by distance and direction. Show the discrepancy on the plan view drawing under (d), above. Show the distances between the corner as previously restored or reestablished and (1) the corner as restored or reestablished, and (2) to at least 2 of the witness monuments shown on the drawing in (d), above.

See drawing below.

(f) Was the corner restored through acceptance of (1) an obliterated evidence location, or, (2) a found perpetuated location?

Restored from accepted evidence.

(g&h) Was the corner reestablished through lost corner proportionate methods? If so, show the method, including the directions and distances to other public land survey corners used as evidence or used for proportioning in determining the corner location?



(i) I, William B. Cochrane
(type or print name) certify that the corner location shown on this record was determined by me or under my direction and control and that this U.S. Public Land Survey Monument Record is correct and complete to the best of my knowledge and belief.

William B. Cochrane October 8, 1986
Signature Date

Survey requested by: Edward [unclear] 3-9-87
District Ranger Date