

U.S. PUBLIC LAND SURVEY MONUMENT RECORD

Index No. Z-13

State of Wisconsin } ss.
County of Forest

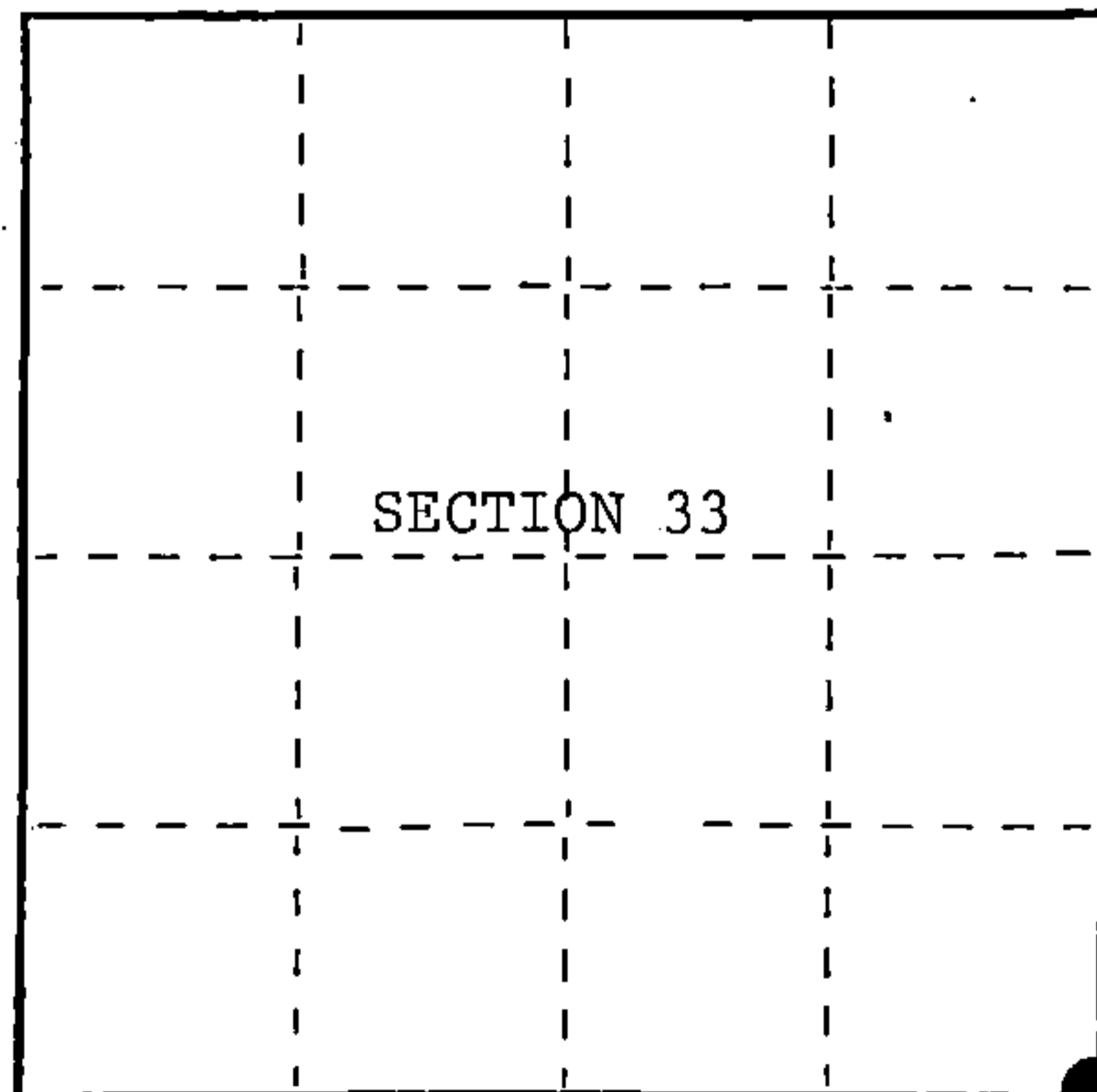
I William B. Cochrane, do hereby certify that on the 9th day of September, 1986, I found evidence of the Southeast Section corner of Section 33 Township 39 North, Range 14 East, Fourth Principal Meridian, as described hereon; and that from this evidence I established a new monument and accessories as described hereon to perpetuate the original location of this corner.

Resident witnesses:

David Brownell

Tony Tillman

State Plane Co-ordinates
N- 237,087.3955
E-2,322,012.8860



○ = Corner monument restored.

History of original corner establishment:

Original Government Survey in 1858 by Artemas Curtis. West on the South side of Section 34, at 80 chs., set Section Corner Post to Sections 33, 34, 3, and 4. From which the following bear;

Y. Birch	14"	N79°W	9.1ks.
Elm	7"	N47°E	20 lks.
Fir	10"	S61°E	29 lks.
Cedar	14"	S50°W	22 lks.

Description of corner evidence found:

Found 3" x 3" x 14" Scribed Wood Post.

No other evidence was recovered.

I accept the wood post as the best available evidence for restoring the corner position.

Description of monument and accessories I established to perpetuate the original location of this corner.

In place of wood post, set a 2½ inch diameter aluminum pipe monument, 3 feet long, 2½ feet in the ground, with an aluminum cap stamped; T39N R14E, S33, S34, S3, S4, T38N, 1986, S-1107. From which the following new blazed and scribed bearing trees bear;

Maple	10"	N26°E	25.20 feet
Maple	7"	S34°E	43.40 feet
Maple	14"	S46°W	32.06 feet
Maple	13"	N62°W	13.79 feet
Steel Sign Post		NW	1.50 feet

Dated at Hiles, Wis., this 27th day of January, 1987

Signature William B. Cochrane Title Land Surveyor Registration No. S-1107
(County Surveyor, Registered Land Surveyor, or other duly authorized official)

Office of Register of Deeds, County of Forest, I hereby certify that the within instrument was filed in this office for record on the 11th day of March, 1987 at 3:30 o'clock P. M.

Paul Aschenbrenner
(Register of Deeds)

By Deputy

FORM NO. 985-A

H.C. Miller Company

Stock No. 26273

DOCUMENT NUMBER 132406

43914330000

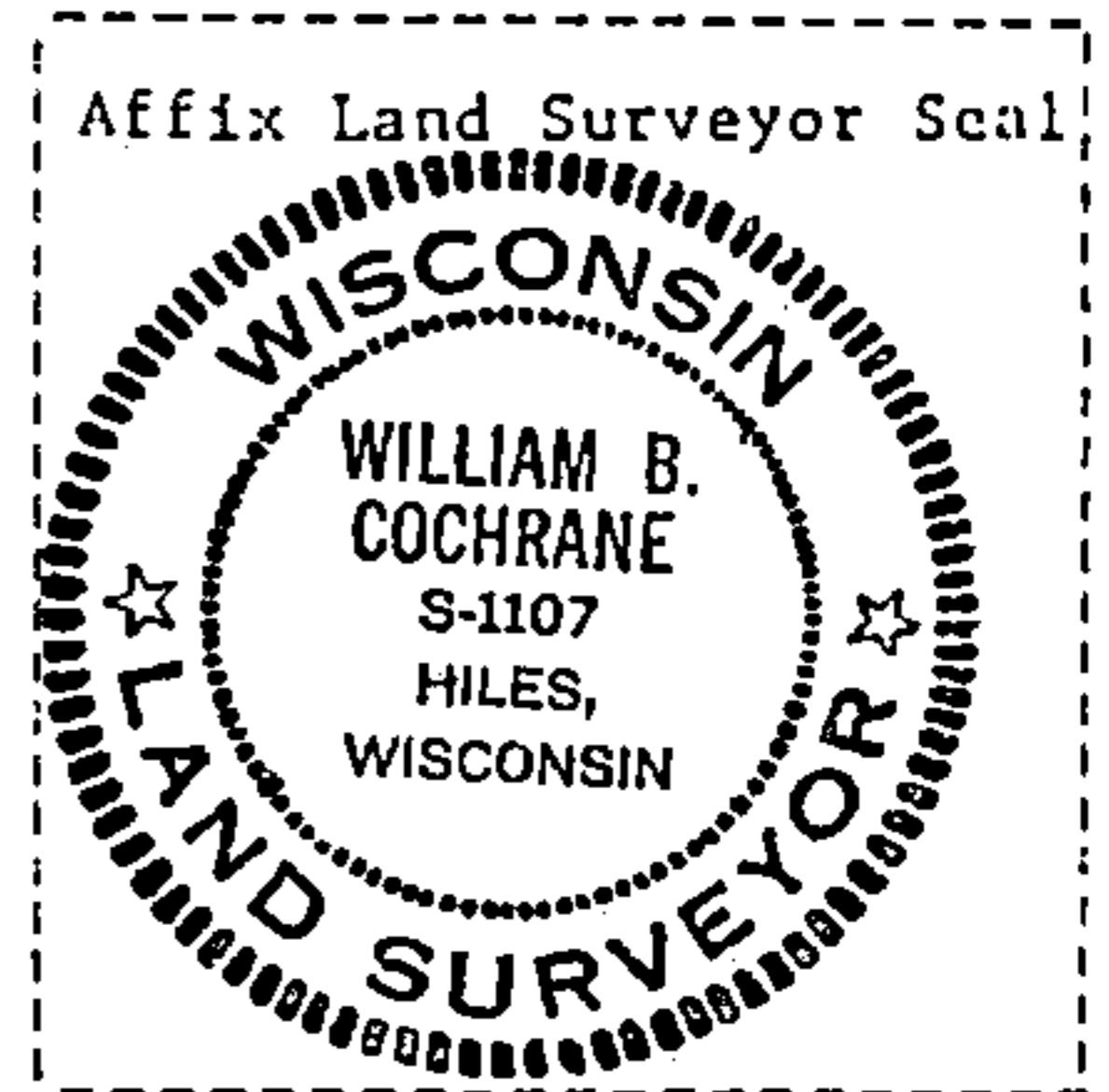
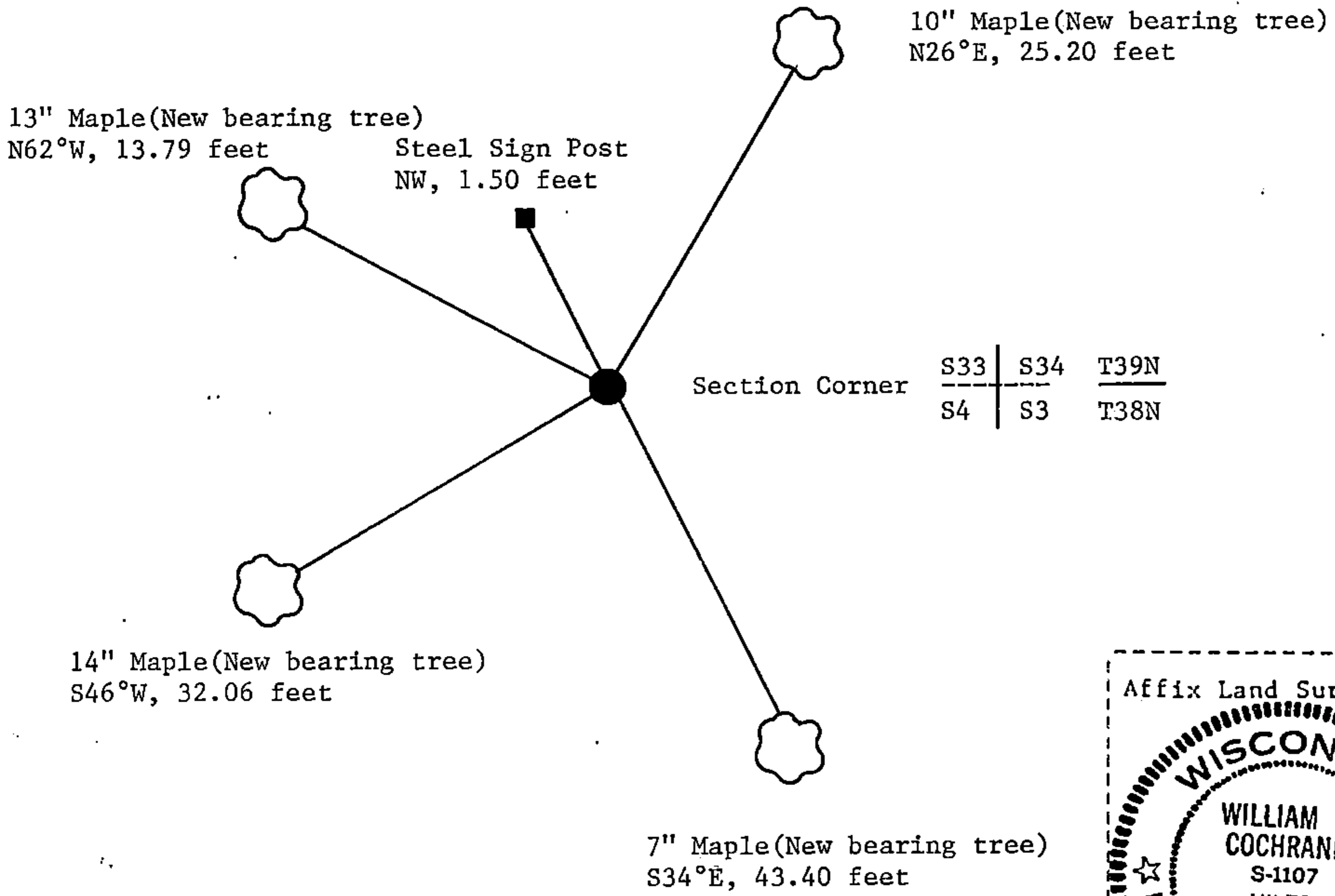
(e) Describe any material discrepancy between the location of the corner as restored or reestablished and the location of that corner as previously restored or reestablished by distance and direction. Show the discrepancy on the plan view drawing under (d), above. Show the distances between the corner as previously restored or reestablished and (1) the corner as restored or reestablished, and (2) to at least 2 of the witness monuments shown on the drawing in (d), above.

See drawing below.

(f) Was the corner restored through acceptance of (1) an obliterated evidence location, or, (2) a found perpetuated location?

Restored from accepted evidence.

(g&h) Was the corner reestablished through lost corner proportionate methods? If so, show the method, including the directions and distances to other public land survey corners used as evidence or used for proportioning in determining the corner location?



(i) I, William B. Cochrane
 (type or print name) certify that the corner location shown on this record was determined by me or under my direction and control and that this U.S. Public Land Survey Monument Record is correct and complete to the best of my knowledge and belief.

William B. Cochrane January 27, 1987
 Signature Date

Survey requested by: Edward [Signature] 3-9-87
 District Ranger Date

U.S. PUBLIC LAND SURVEY MONUMENT RECORD

Index No. A-13

State of Wisconsin }
 County of Forest } ss.

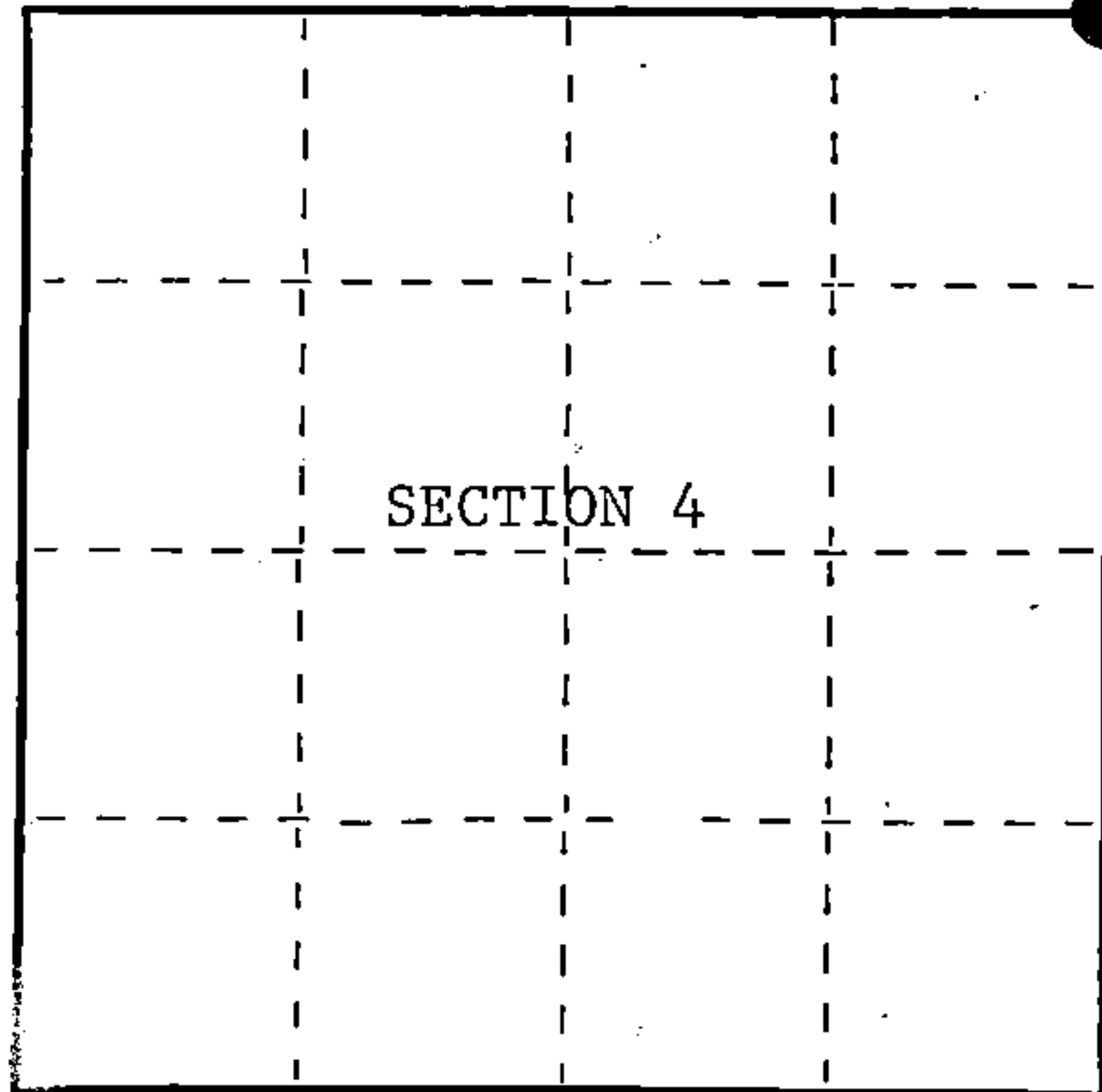
I, William B. Cochrane, do hereby certify that on the 9th day of September, 1986, I found evidence of the Northeast Section corner of Section 4 Township 38, North, Range 14 East, Fourth Principal Meridian, as described hereon; and that from this evidence I established a new monument and accessories as described hereon to perpetuate the original location of this corner.

Resident witnesses:

David Brownell

Tony Tillman

State Plane Co-ordinates
 N- 237,087.3955
 E-2,322,012.8860



○ = Corner monument restored.

History of original corner establishment:

Original Government Survey in 1858 by Artemas Curtis. West on the North side of Section 3, at 80 chs., set Section Corner Post to Sections 3, 4, 33, and 34, from which the following bear;

Y. Birch	14"	N79°W	9 lks.
Elm	7"	N47°E	20 lks.
Fir	10"	S61°E	29 lks.
Cedar	14"	S50°W	22 lks.

Description of corner evidence found:

Found 3" x 3" x 14" Scribed Wood Post.

No other evidence was recovered.

I accept the wood post as the best available evidence for restoring the corner position.

Description of monument and accessories I established to perpetuate the original location of this corner.

In place of wood post, set a 2½ inch diameter aluminum pipe monument, 3 feet long, 2½ feet in the ground, with an aluminum cap stamped; T39N, R14E, S33, S34, S3, S4, T38N, 1986, S-1107. From which the following new blazed and scribed bearing trees bear;

Maple	10"	N26°E	25.20 feet
Maple	7"	S34°E	43.40 feet
Maple	14"	S46°W	32.06 feet
Maple	13"	N62°W	13.79 feet
Steel Sign Post		NW	1.50 feet

Dated at Hiles, Wis., this 27th day of January, 1987

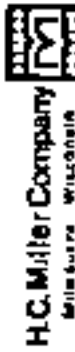
Signature William B. Cochrane Title Land Surveyor Registration No. S-1107
 (County Surveyor, Registered Land Surveyor, or other duly authorized official)

Office of Register of Deeds, County of Forest, I hereby certify that the within instrument was filed in this office for record on the 11th day of March, 1987 at 3:30 o'clock P. M.

Paul Aschenbrenner
 (Register of Deeds)

By.....Deputy

FORM NO. 985-A



Stock No. 26273

DOCUMENT NUMBER 132292

4391433000

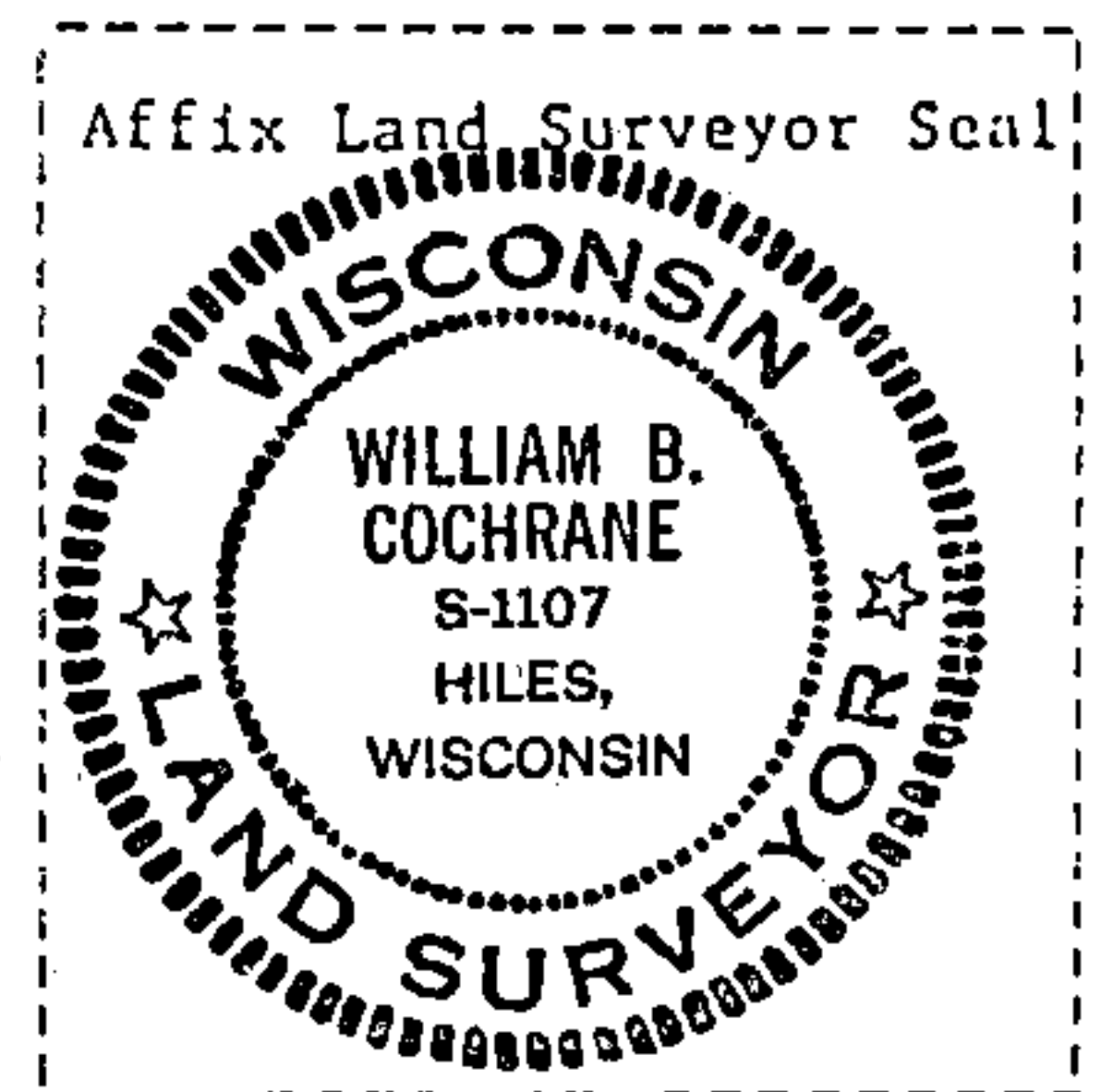
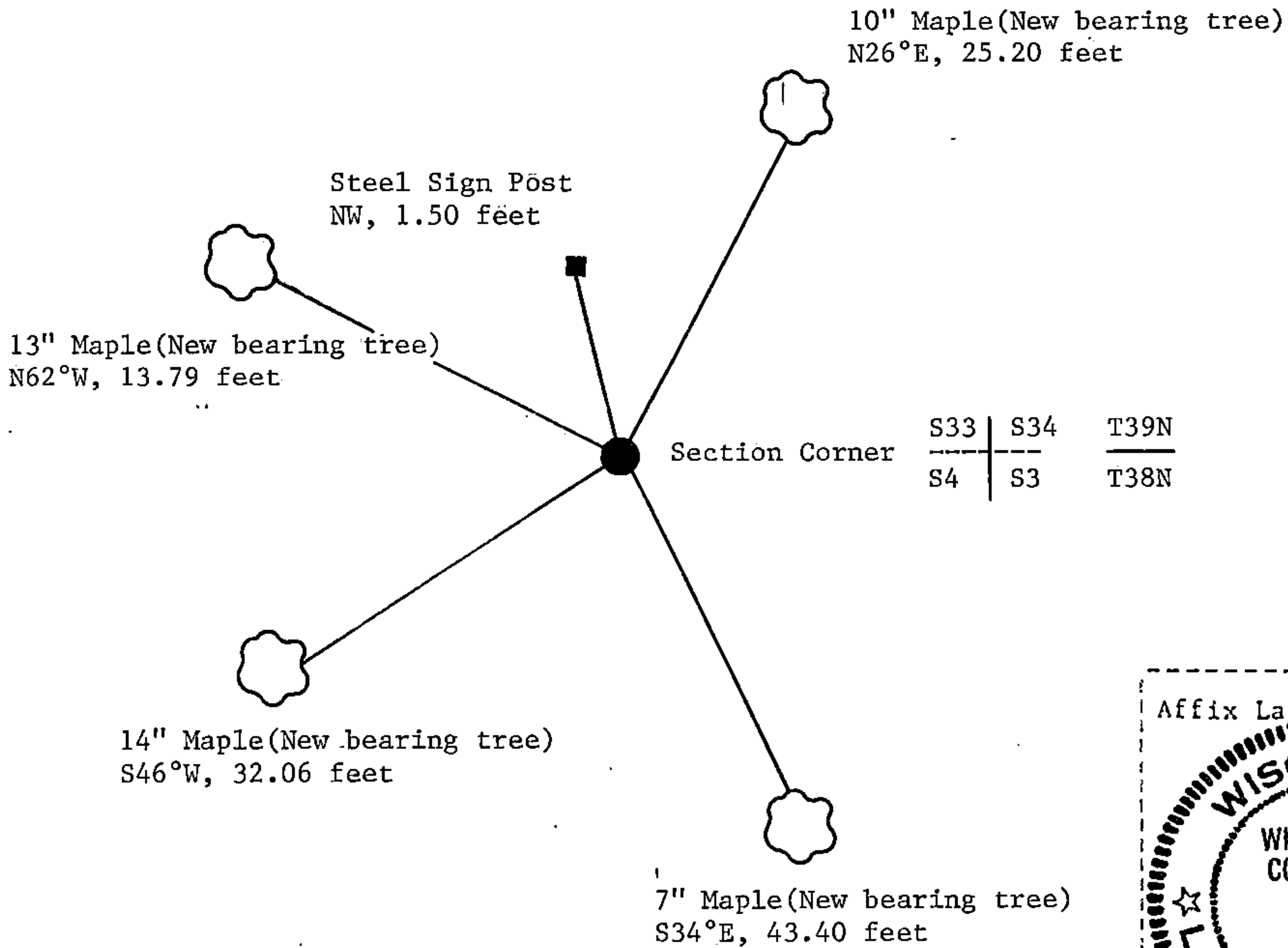
(e) Describe any material discrepancy between the location of the corner as restored or reestablished and the location of that corner as previously restored or reestablished by distance and direction. Show the discrepancy on the plan view drawing under (d), above. Show the distances between the corner as previously restored or reestablished and (1) the corner as restored or reestablished, and (2) to at least 2 of the witness monuments shown on the drawing in (d), above.

See drawing below.

(f) Was the corner restored through acceptance of (1) an obliterated evidence location, or, (2) a found perpetuated location?

Restored from accepted evidence.

(g&h) Was the corner reestablished through lost corner proportionate methods? If so, show the method, including the directions and distances to other public land survey corners used as evidence or used for proportioning in determining the corner location?



(i) I, William B. Cochrane
(type or print name) certify that the corner location shown on this record was determined by me or under my direction and control and that this U.S. Public Land Survey Monument Record is correct and complete to the best of my knowledge and belief.

William B. Cochrane January 27, 1987
Signature Date

Survey requested by: Edward Ager 3-9-87
District Ranger Date