

U. S. PUBLIC LAND SURVEY MONUMENT RECORD

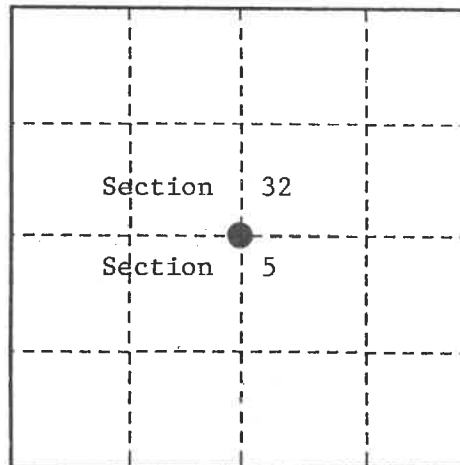
INSTRUCTIONS:

This record shall show the location of the corner and shall include all of the following nine elements (a through i).

(a) Identify the corner by reference to the U.S. public land survey system.

○ = Corner monument restored.

Quarter Corner common to Sections 32 and 5, T38-39N, R14E, Forest County, Wisconsin



(b) Describe any record evidence, monument evidence, occupational evidence, testimonial evidence or any other material evidence you considered, and whether the monument was found or placed.

Original Government Survey in 1865 by William E. Daugherty and Alex McDill.

In 1969, Jean Resvick, Land Surveyor with the Forest Service, restored the corner position according to Land Corner Certificate Document #98921. At the corner position set a 2 inch diameter galvanized iron pipe, 5 feet long, 4 feet in the ground, with a brass cap stamped; T39N, R14E, T38N, 1/4, S32, S5, 1970, S-802.

In 1985, William B. Cochrane, Land Surveyor with the Forest Service, found the monument as described above and the following bearing trees;

Cedar	12"	N62°E	6.39 feet
Cedar	12"	N63°W	5.93 feet
Steel Sign Post		Southeast	1.50 feet

Blazed and scribed new bearing trees;

Cedar	13"	S88°E	39.74 feet
Cedar	14"	S40°W	20.70 feet

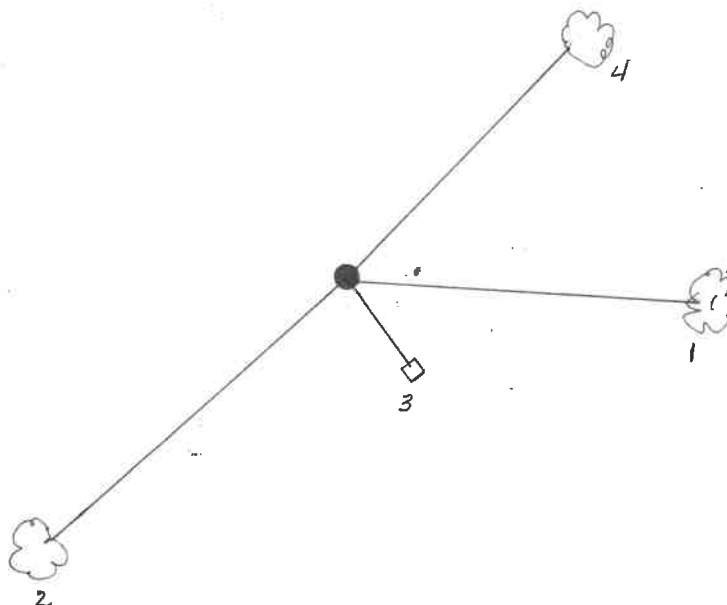
On 9-28-99, Gary L. Pisoni, RLS, found the monument as described above, found the bearing trees as described below, and made a new bearing tree as described below.

See previously recorded Land Corner Certificate, Document # 132403.

(c) In the plan view drawing below, provide reference ties to at least 4 witness monuments, or, if the location is within a municipality, to at least 2 witness monuments. (witness monuments shall be made of concrete, natural stone, iron or other equally durable material.)

(d) Show a plan view drawing depicting the relevant monuments and reference ties which is sufficient in detail to enable accurate relocation of the corner monument if the corner monument is disturbed. Indicate north.

1. Cedar, 15", S88°E, 39.74 feet
2. Cedar, 16", S40°W, 20.70 feet
3. Steel Sign Post, S38°E, 1.29 feet
4. Cedar, 13", N28°E, 47.95 feet (NBT)



REGISTER'S OFFICE  
Forest County, Wis.  
Received for record this 27th day  
of October A.D., 1999 at  
10:05 o'clock A.M. and recorded  
in Vol. Corner Restoration  
page 2-7  
Kay Swanson, Deputy  
Register of Deeds

43914 32 0020

(e) Describe any material discrepancy between the location of the corner as restored or reestablished and the location of that corner as previously restored or reestablished by distance and direction. Show the discrepancy on the plan view drawing under (d), above. Show the distances between the corner as previously restored or reestablished and (1) the corner as restored or reestablished, and (2) to at least 2 of the witness monuments shown on the drawing in (d), above.

None

(f) Was the corner restored through acceptance of (1) an obliterated evidence location, or, (2) a found perpetuated location?

Found perpetuated location.

(g & h) Was the corner reestablished through lost corner proportionate methods? If so, show the method, including the directions and distances to other public land survey corners used as evidence or used for proportioning in determining the corner location?

(1) I, Gary L. Pisoni

(type or print name) certify that the corner location shown on this record was determined by me or under my direction and control and that this U.S. Public Land Survey Monument Record is correct and complete to the best of my knowledge and belief.

Gary L. Pisoni

10-2-99

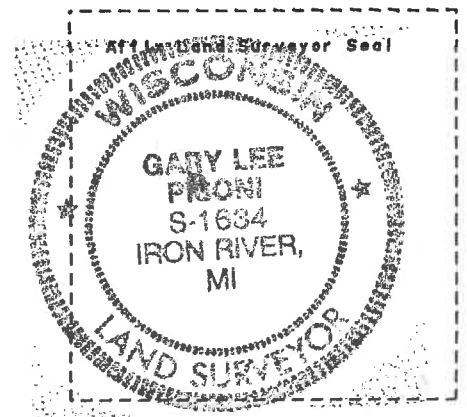
Signature

Date

CERTIFICATE READY FOR FILING:

E. B. [Signature]

District Ranger



U.S. PUBLIC LAND SURVEY MONUMENT RECORD

Index No. Z-7

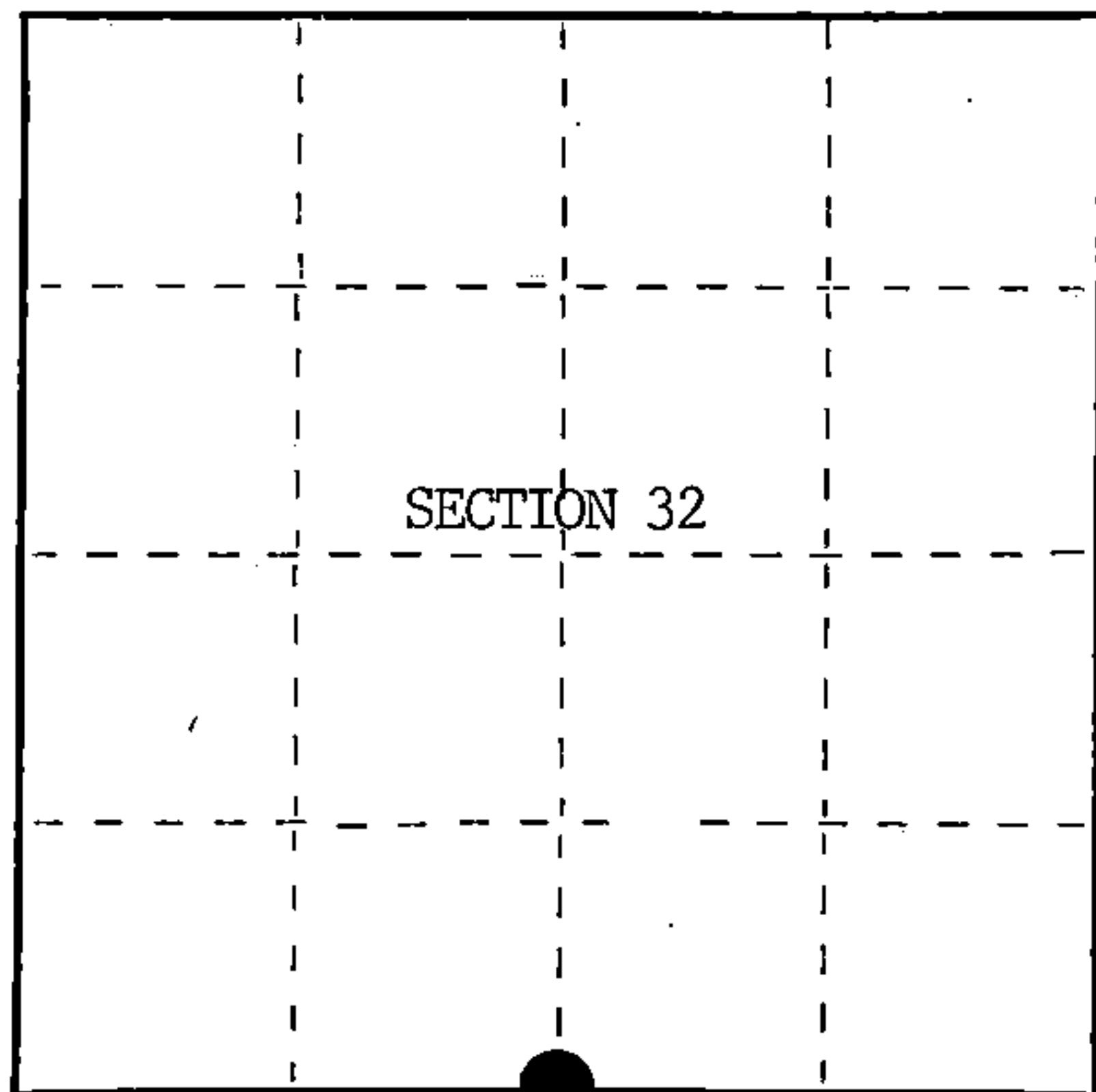
State of Wisconsin }  
 County of Forest } ss.

I, William B. Cochran, do hereby certify that on the 1st day of July, 1985, I found evidence of the South Quarter corner of Section 32 Township 39, North, Range 14 East, Fourth Principal Meridian, as described hereon; and that from this evidence I established a new monument and accessories as described hereon to perpetuate the original location of this corner.

Resident witnesses:

David Brownell

State Plane Co-ordinates  
 N- 236,927.2850  
 E-2,314,186.1610



○ = Corner monument restored.

History of original corner establishment:

Original Government Survey in 1858 by Alfred Millard.

Corner restoration on July 1st, 1969, by Jean Resvick, a Registered Land Surveyor with the U.S. Forest Service.

See Certified Land Corner Restoration Certificate #98921, filed in the Registrar of Deeds Office, in the Forest County Courthouse.

Description of corner evidence found:

Found monument as described and in place, from which the following bear;

Cedar	12"	N62°E	6.39 feet
Cedar	12"	N63°W	5.93 feet
Steel Sign Post		SE	1.50 feet

The above Bearing Trees were cut down for the Aerial Photo Project.

Description of monument and accessories I established to perpetuate the original location of this corner.

Blazed and scribed the following new bearing trees;

Cedar	13"	S88°E	39.74 feet
Cedar	14"	S40°W	20.70 feet

Re-set Steel Sign Post SE 3.50 feet

Dated at Hiles, Wis., this 29th day of January, 1986

Signature William B. Cochran Title Land Surveyor Registration No. S-1107  
 (County Surveyor, Registered Land Surveyor, or other duly authorized official)

Office of Register of Deeds, County of Forest, I hereby certify that the within instrument was filed in this office for record on the 11th day of March, 1987 at 3:30 o'clock P. M.

Paul Aschenbrenner  
 (Register of Deeds)

By.....Deputy

FORM NO. 985-A  
 H.C. Miller Company  
 REGISTERED INSTRUMENT

Stock No. 26273

DOCUMENT NUMBER 132403

4391432.0620

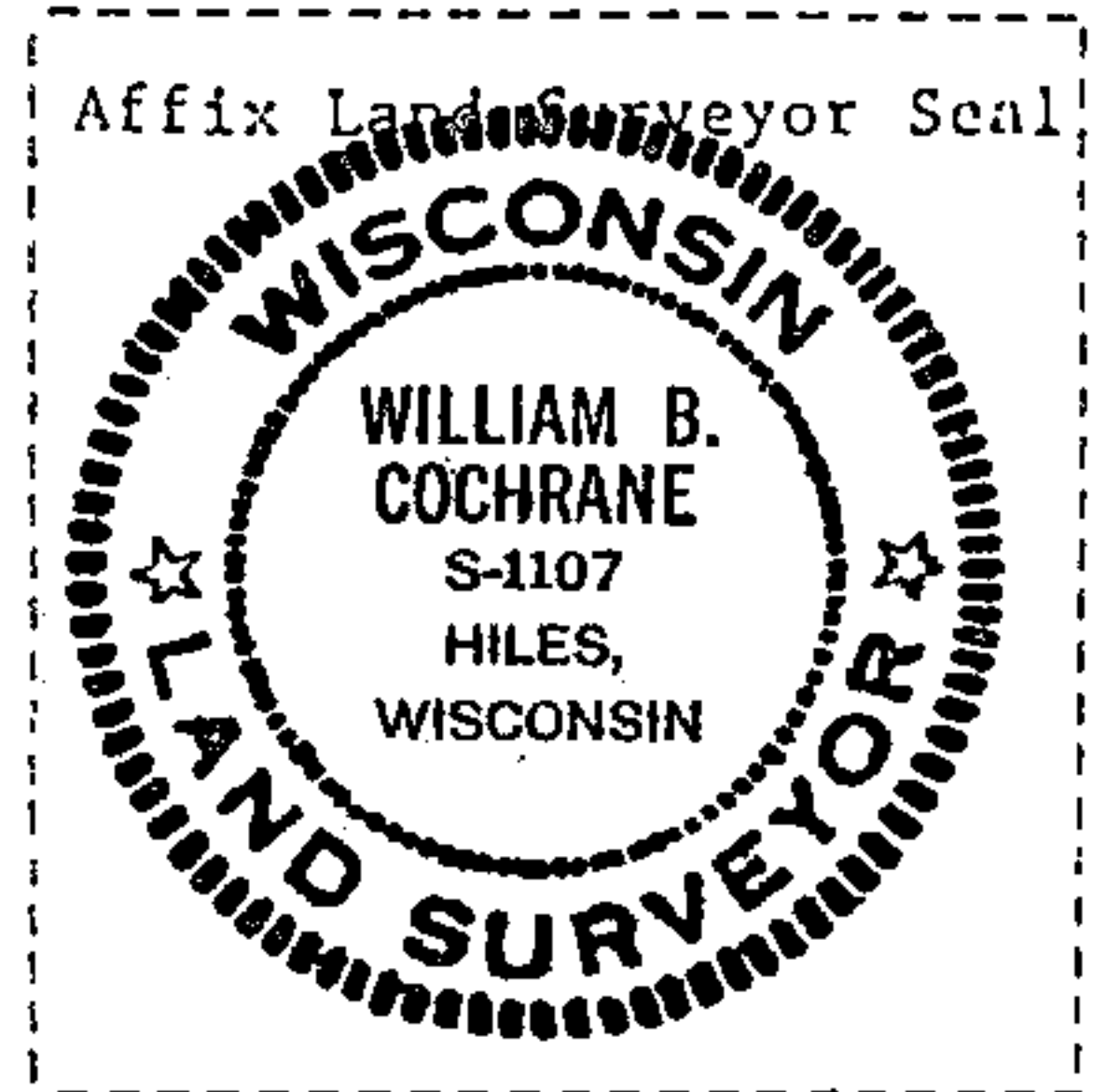
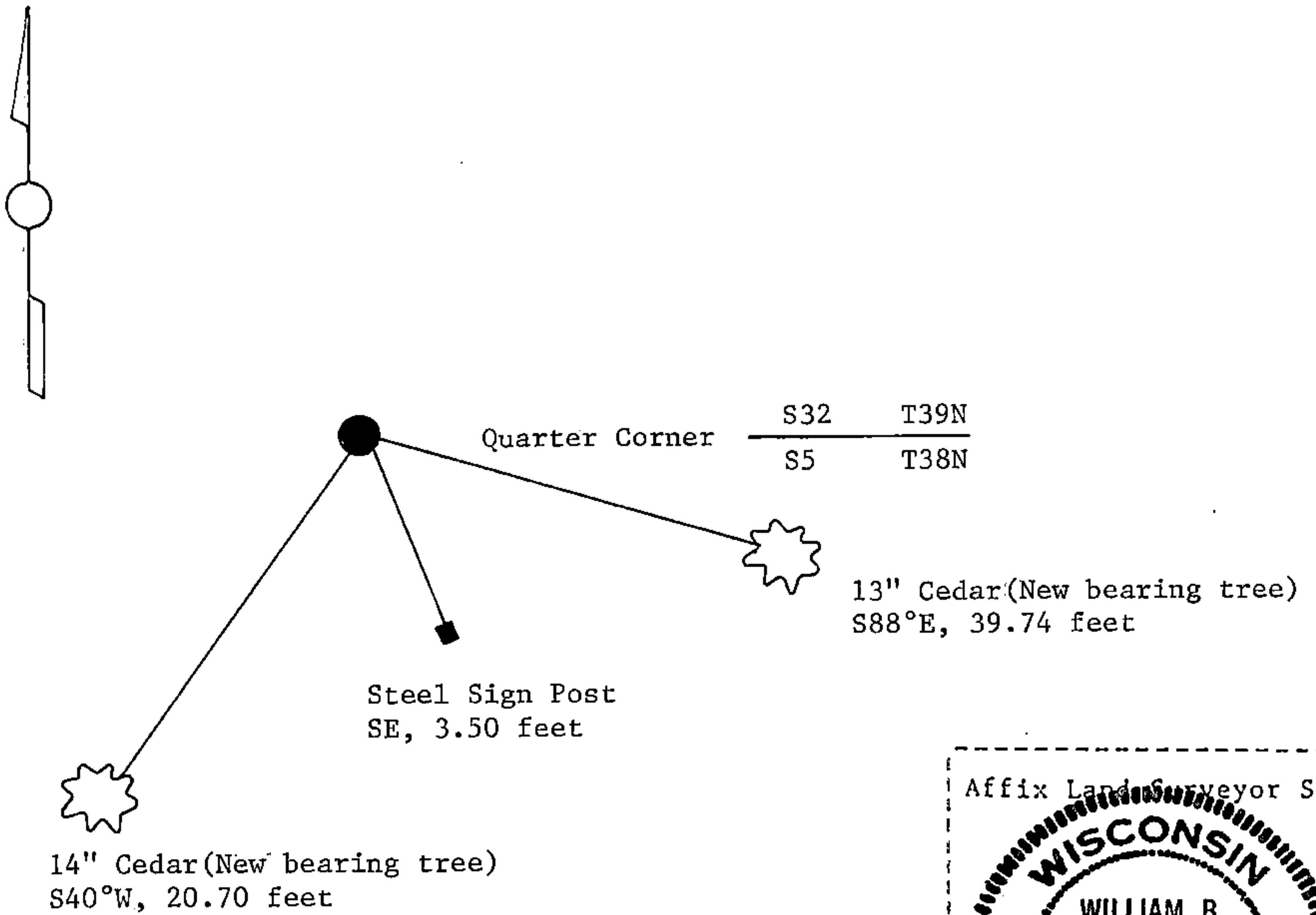
(e) Describe any material discrepancy between the location of the corner as restored or reestablished and the location of that corner as previously restored or reestablished by distance and direction. Show the discrepancy on the plan view drawing under (d), above. Show the distances between the corner as previously restored or reestablished and (1) the corner as restored or reestablished, and (2) to at least 2 of the witness monuments shown on the drawing in (d), above.

See drawing below.

(f) Was the corner restored through acceptance of (1) an obliterated evidence location, or, (2) a found perpetuated location?

Restored through acceptance of a found perpetuated location.

(g&h) Was the corner reestablished through lost corner proportionate methods? If so, show the method, including the directions and distances to other public land survey corners used as evidence or used for proportioning in determining the corner location?



(i) I, William B. Cochrane  
 (type or print name) certify that the corner location shown on this record was determined by me or under my direction and control and that this U.S. Public Land-Survey Monument Record is correct and complete to the best of my knowledge and belief.

William B. Cochrane October 7, 1986  
 Signature Date

Survey requested by: [Signature] 3-9-87  
 District Ranger Date

U.S. PUBLIC LAND SURVEY MONUMENT RECORD

Index No. A-7

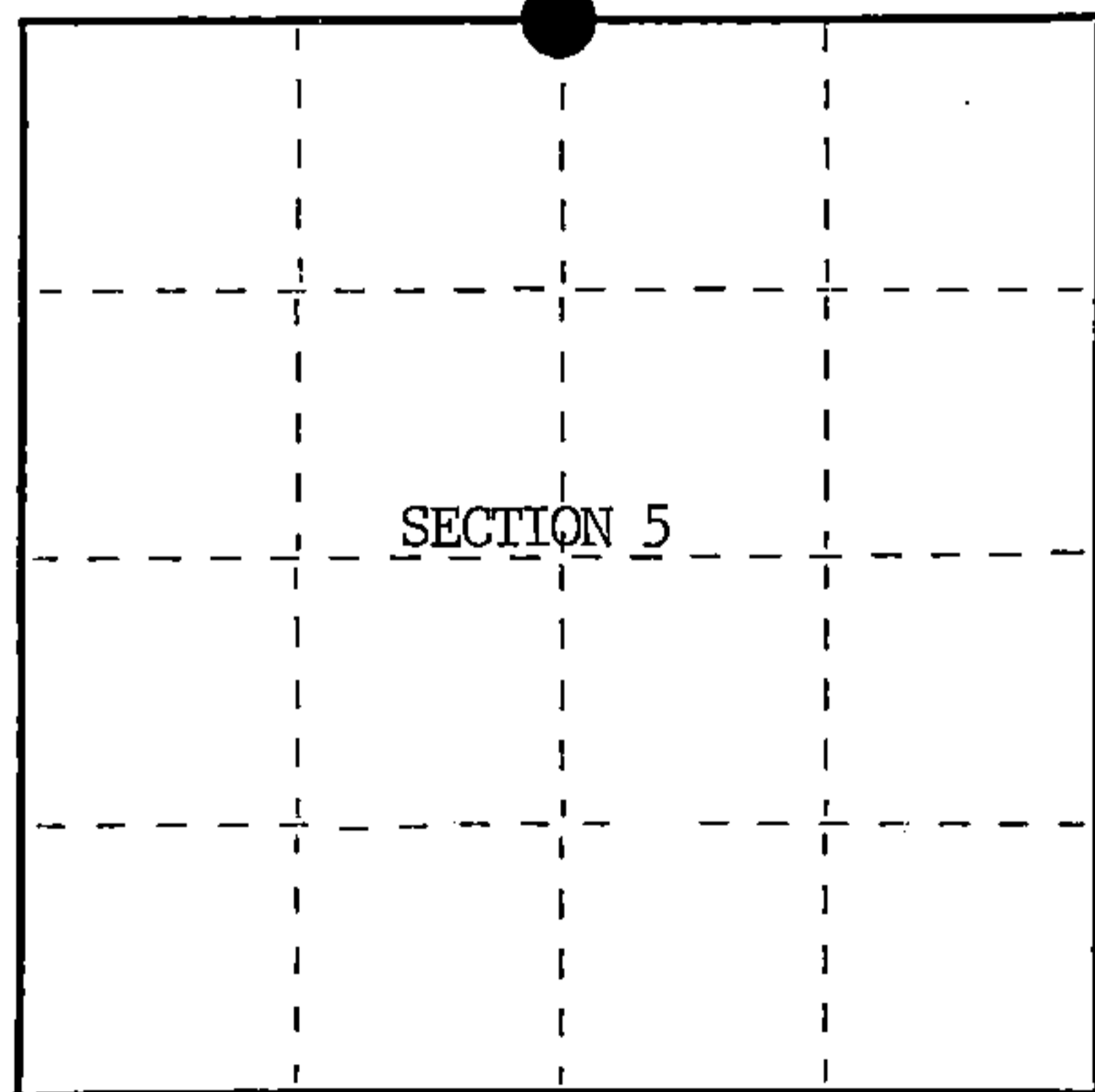
State of Wisconsin }  
County of Forest } ss.

I, William B. Cochrane, do hereby certify that on the 1st day of July, 1985, I found evidence of the North Quarter corner of Section 5 Township 38 North, Range 14 East, Fourth Principal Meridian, as described hereon; and that from this evidence I established a new monument and accessories as described hereon to perpetuate the original location of this corner.

Resident witnesses:

David Brownell

State Plane Co-ordinates  
N- 236,927.2850  
E-2,314,186.1610



○ = Corner monument restored.

History of original corner establishment:

Original Government Survey in 1858 by Alfred Millard.

Corner restored on July 1st, 1969, by Jean Resvick, a Registered Land Surveyor with the U.S. Forest Service.

See Certified Land Corner Restoration Certificate #98921, filed in the Registrar of Deeds Office, in the Forest County Courthouse.

Description of corner evidence found:

Found monument as described and in place, from which the following bear;

Cedar	12"	N62°E	6.39 feet
Cedar	12"	N63°W	5.93 feet
Steel Sign Post		SE	1.50 feet

The above bearing trees were cut down for the Aerial Photo Project.

Description of monument and accessories I established to perpetuate the original location of this corner.

Blazed and scribed the following new bearing trees;

Cedar	13"	S88°E	39.74 feet
Cedar	14"	S40°W	20.70 feet
Re-set Steel Sign Post		SE	3.50 feet

Dated at Hiles, Wis., this 27th day of January, 1986

Signature: William B. Cochrane Title: Land Surveyor Registration No. S-1107  
(County Surveyor, Registered Land Surveyor, or other duly authorized official)

Office of Register of Deeds, County of Forest, I hereby certify that the within instrument was filed in this office for record on the 11th day of March, 1987 at 3:30 o'clock P.M.

Paul Aschenbrenner  
(Register of Deeds)

By Deputy

FORM NO. 985-A

H.C. Miller Company

Stock No. 26273

DOCUMENT NUMBER 132289

43914320020

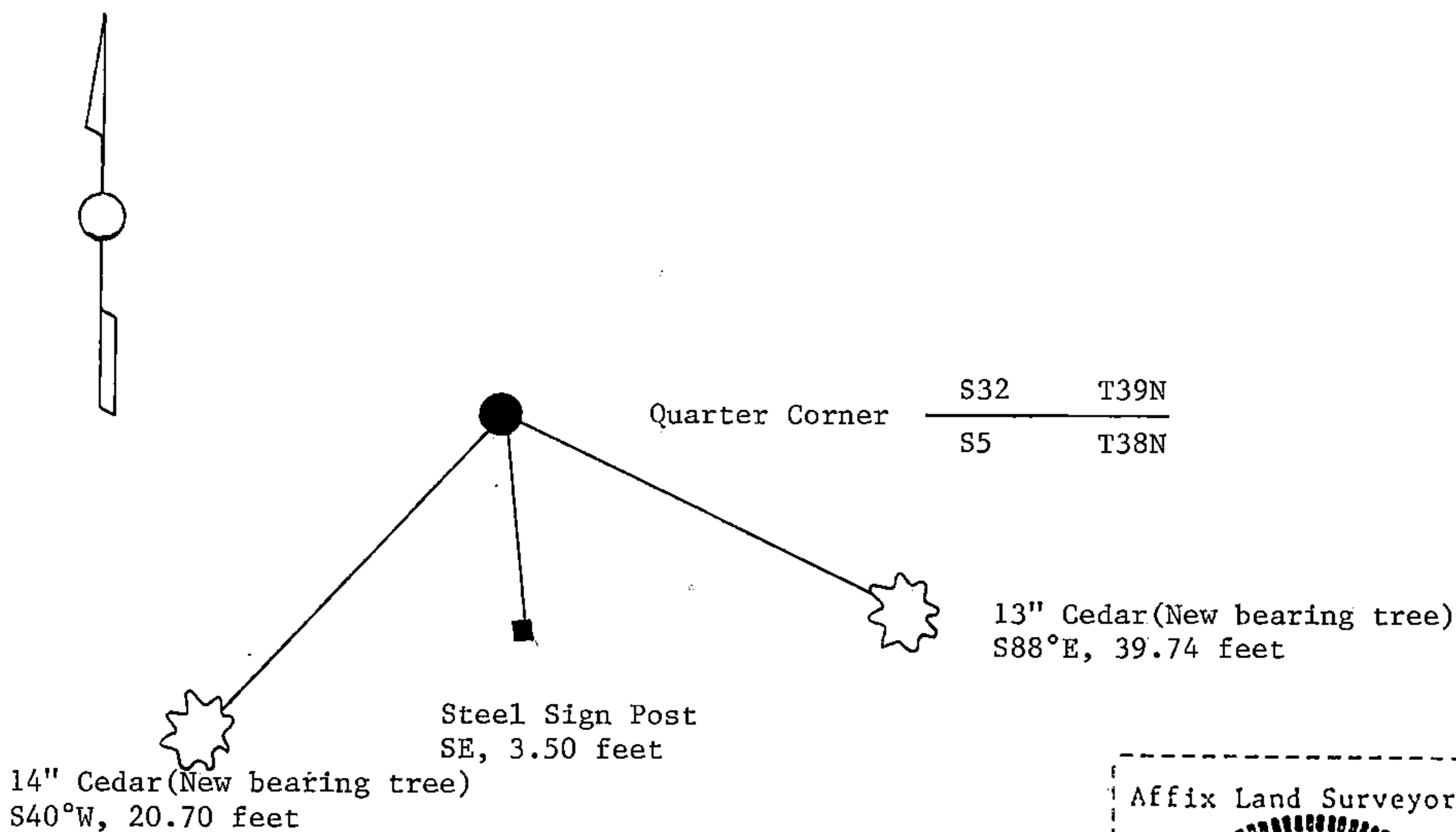
(e) Describe any material discrepancy between the location of the corner as restored or reestablished and the location of that corner as previously restored or reestablished by distance and direction. Show the discrepancy on the plan view drawing under (d), above. Show the distances between the corner as previously restored or reestablished and (1) the corner as restored or reestablished, and (2) to at least 2 of the witness monuments shown on the drawing in (d), above.

See drawing below.

(f) Was the corner restored through acceptance of (1) an obliterated evidence location, or, (2) a found perpetuated location?

Restored through acceptance of a found perpetuated location.

(g&h) Was the corner reestablished through lost corner proportionate methods? If so, show the method, including the directions and distances to other public land survey corners used as evidence or used for proportioning in determining the corner location?



(i) I, William B. Cochrane  
 (type or print name) certify that the corner location shown on this record was determined by me or under my direction and control and that this U.S. Public Land Survey Monument Record is correct and complete to the best of my knowledge and belief.

William B. Cochrane October 8, 1986  
 Signature Date

Survey requested by, [Signature] 3-9-87  
 District Ranger Date

CERTIFIED LAND CORNER RESTORATION

State of Wisconsin }  
County of Forest } ss.

I Jean F. Resvick, do hereby certify that on the 1st day of July, 1969, I found evidence of the North quarter corner of Section 5 Township 38 North, Range 14 East, Fourth Principal Meridian, as described hereon; and that from this evidence I established a new monument and accessories as described hereon to perpetuate the original location of this corner:

Description of original monument and accessories and subsequent restorations:

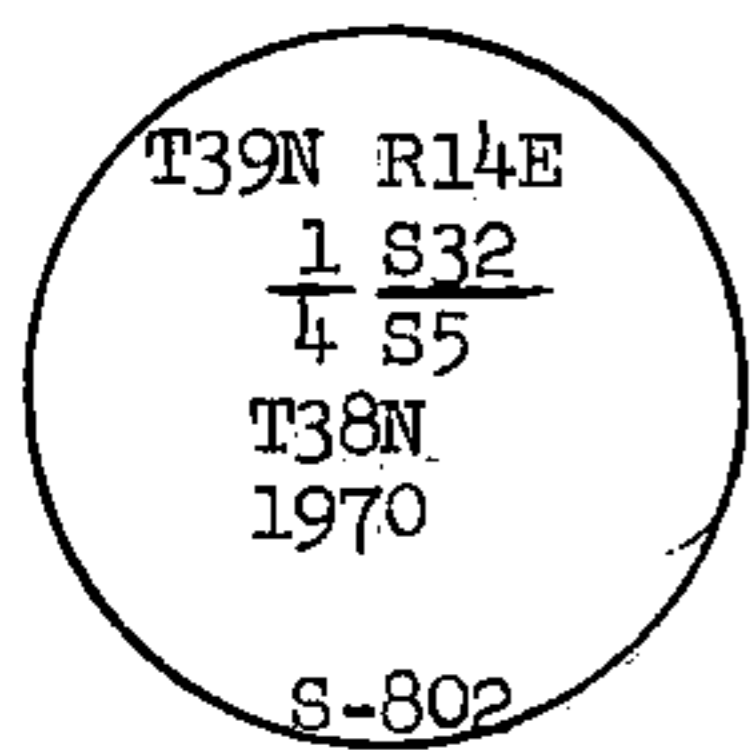
Survey in 1858 by Alfred Millard. 40.0 chains west between sections 5 and 32 set post. Tamarack 8, bears N70W, 27 lks. Tamarack 7, bears S80E, 16 lks. 4 chains east leave swamp 23 chains west stream, 8 lks. wide runs east.

Description of corner evidence found:

2 x 2 squared post from which a tamarack stump bears N70W, 27 lks. Fallen snag by stump with scribing. At S80E, 16 lks. from post, stump hole of blow down, 23.00 chains west to stream. 27.00 west to edge of swamp. 8.00 chains east to edge of swamp.

Description of monument and accessories I established to perpetuate the original location of this corner:

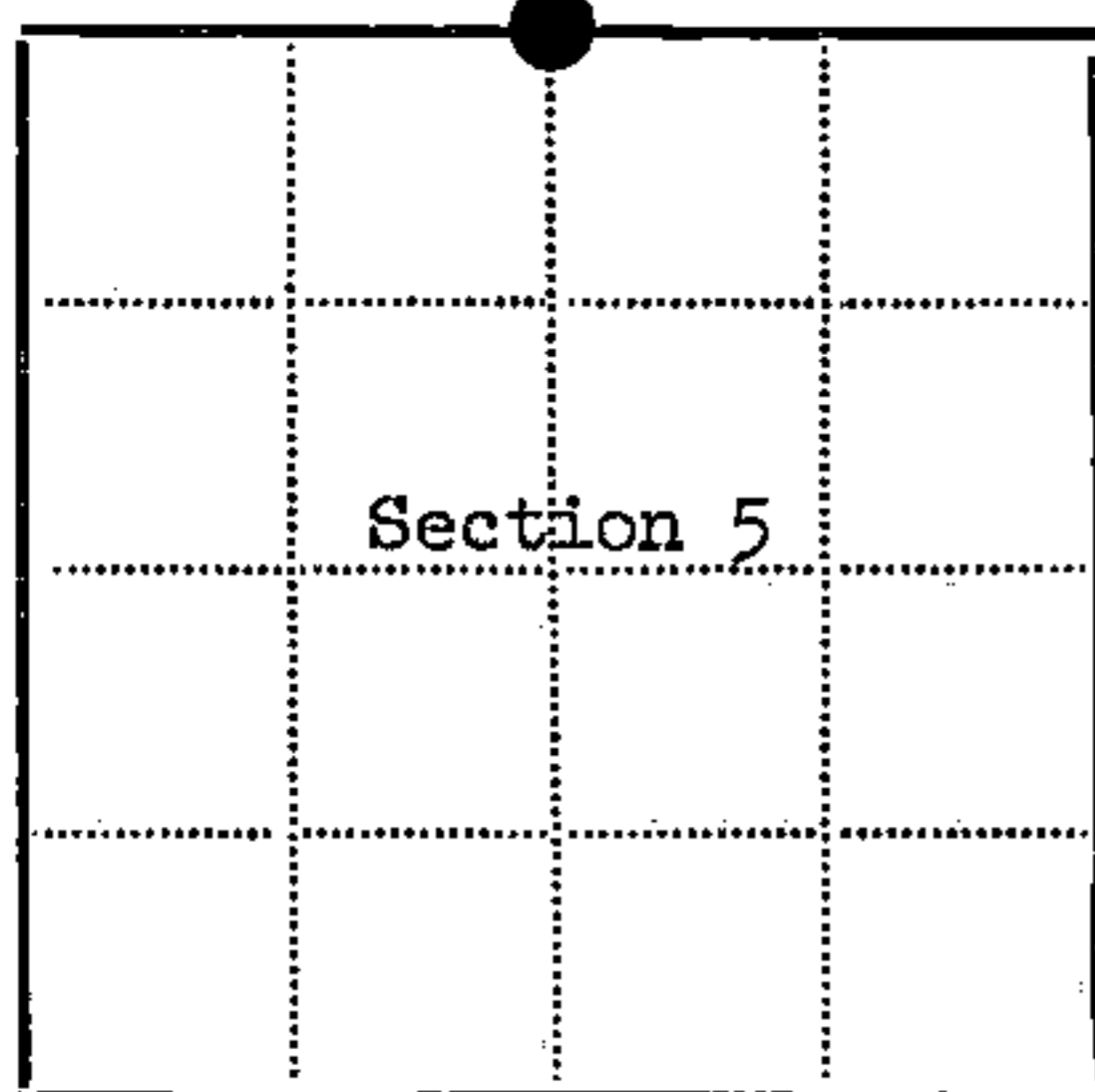
Replaced 2 x 2 post with a 2 inch inside diameter, galvanized wrought iron pipe, 5 ft. long, filled with concrete, with brass cap marked.



From which the following blazed and scribed new bearing trees bear.

- Cedar 9, bears N62E, 6.39 ft.
- Cedar 8, bears N63W, 5.93 ft.

Steel post set 1.5 feet SE of monument



● = Corner monument restored  
□ =

Resident witnesses.....

Dated at Rhinelander Wisconsin, this 8th day of April 1970.

Signature Jean F. Resvick Title Cadastral Surveyor  
(County Surveyor, Registered Land Surveyor, or other duly authorized official)

Surveyors Registration No. S-802 DOCUMENT No. 98921

Office of Register of Deeds County of Forest

I hereby certify that the within instrument was filed in this office for record on the 23rd day of October 1970, and was filed in Book No. CORNER Page No. A-7 of County Records.

Signature Eugene Stutzman Title Register of Deeds

Township 38 North, Range 14 East, Section 5, Index No. A-7, Page No.

A 7