

U.S. PUBLIC LAND SURVEY MONUMENT RECORD

Index No. Z-9

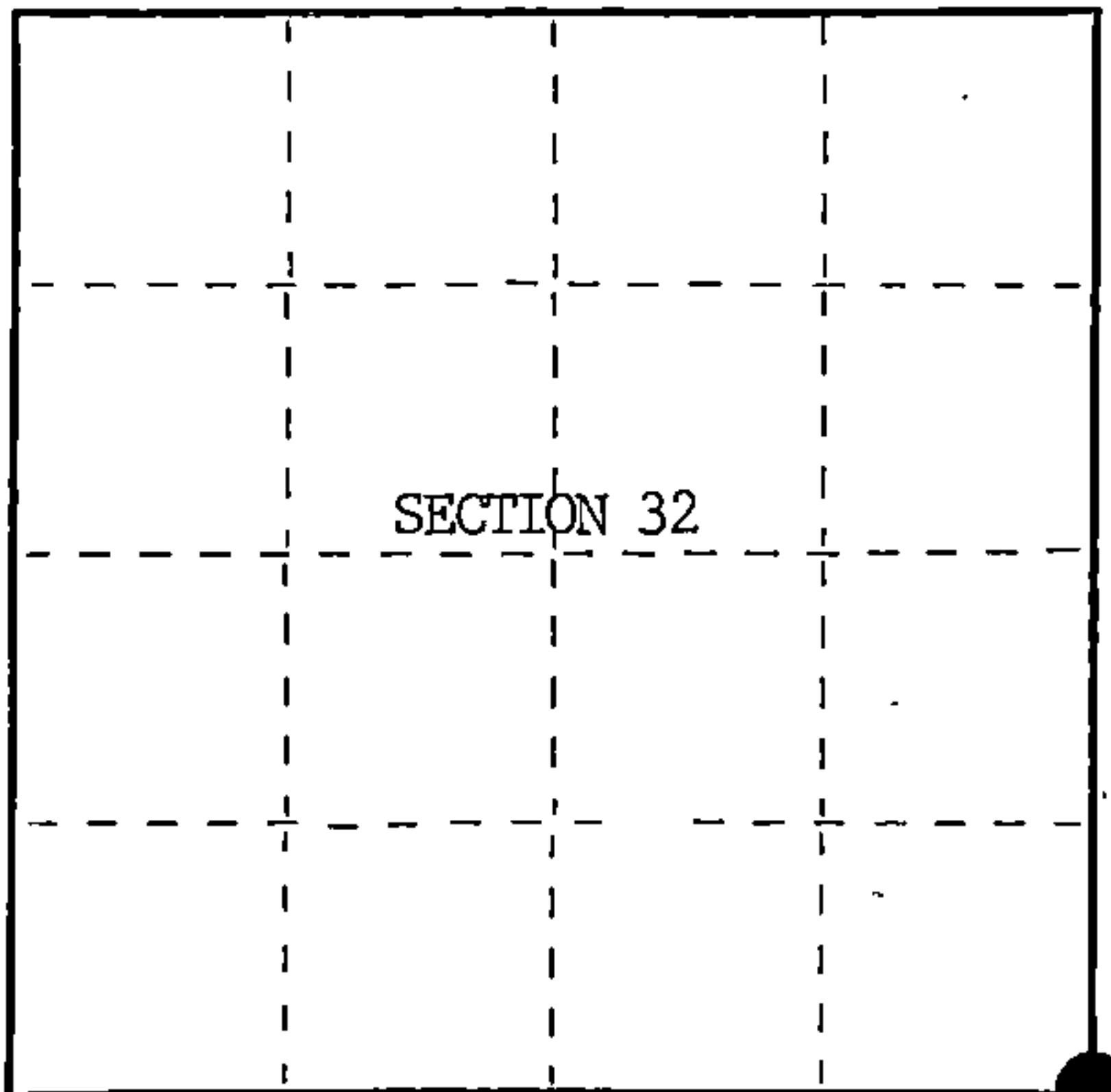
State of Wisconsin }
County of Forest } ss.

I, William B. Cochran, do hereby
certify that on the 29th day
of July, 1985, I found
evidence of the Southeast Section
corner of Section 32
Township 39, North, Range
14 East, Fourth Principal Meridian,
as described hereon; and that from this evidence
I established a new monument and accessories
as described hereon to perpetuate the original
location of this corner.

Resident witnesses:

David Brownell

State Plane Co-ordinates
N- 236,962.3710
E-2,316,789.5310



○ = Corner monument restored.

History of original corner establishment:

Original Government Survey in 1858 by Alfred Millard.

Corner restored on June 14th, 1968, by Jean Resvick, a Registered
Land Surveyor with the U.S. Forest Service.

See Certified Land Corner Restoration Certificate #95890, filed in the
Registrar of Deeds Office, in the Forest County Courthouse.

Description of corner evidence found:

Found monument as described and in place, from which the following bear;

Cedar	12"	N37°E	9.00 feet-Cut down for Aerial Photo Project.
Maple	5"	S46°E	4.33 feet
Cedar	7"	S13°W	17.86 feet
Cedar	13"	N52°W	17.94 feet-Cut down for Aerial Photo Project.
4"x4" Sign Post		N45°W	1.30 feet

Description of monument and accessories I established to perpetuate the original location of this corner.

Blazed and scribed the following new bearing trees;

Maple	6"	N32°E	57.20 feet
Maple	7"	N51°W	84.37 feet
Steel Sign Post		SE	2.50 feet

Dated at Hiles, Wis., this 27th day of January, 1986.

Signature: William B. Cochran Title: Land Surveyor Registration No. S-1107
(County Surveyor, Registered Land Surveyor, or other duly authorized official)

Office of Register of Deeds, County of Forest, I hereby certify that the within
instrument was filed in this office for record on the 11th day of March, 1987
at 3:30 o'clock P. M.

Paul Aschenbrenner
(Register of Deeds)

By Deputy

FORM NO. 985-A
H.C. Miller Company
ST. LOUIS, MO.

Stock No. 26273

DOCUMENT NUMBER 132404

43914 320000

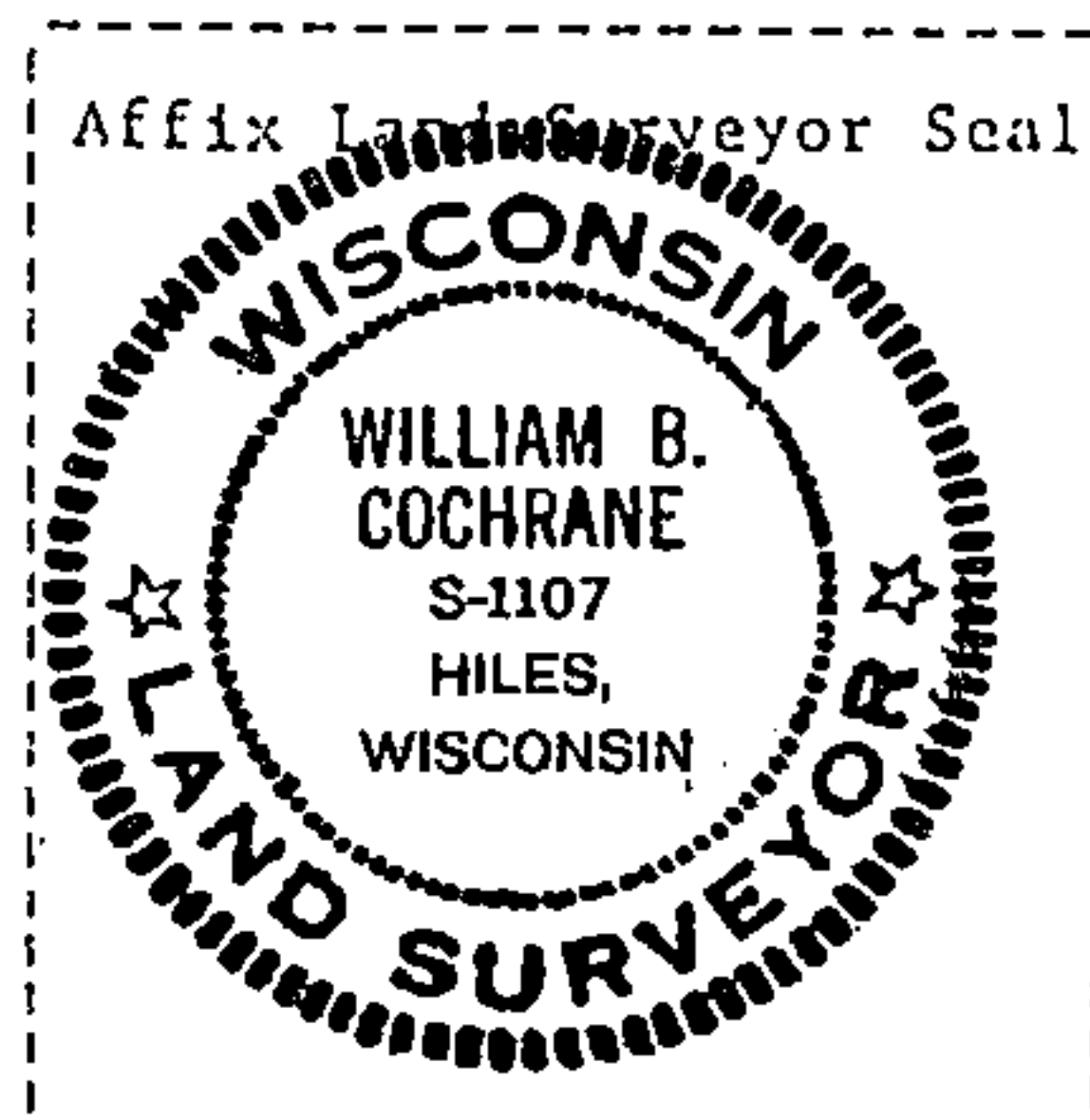
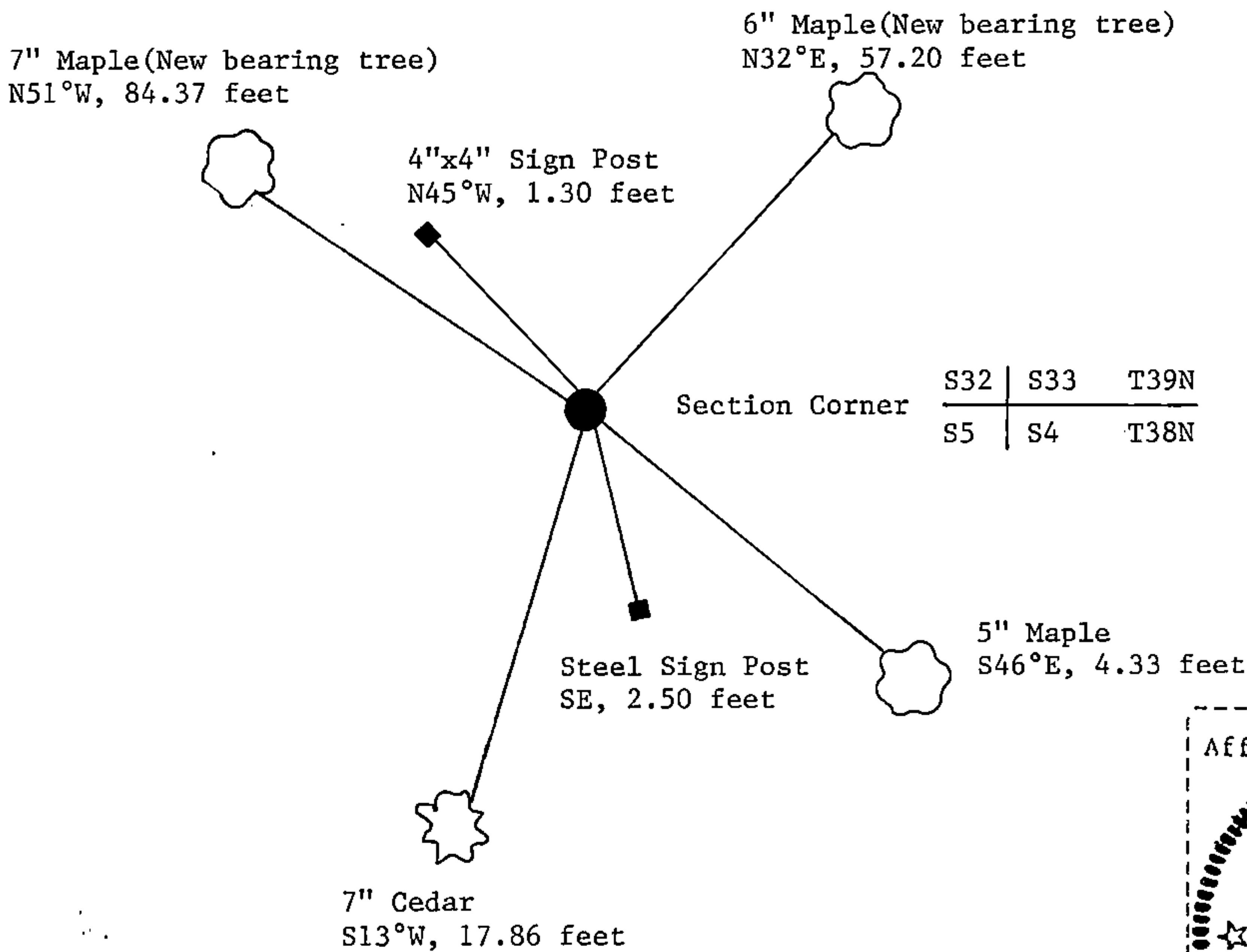
(e) Describe any material discrepancy between the location of the corner as restored or reestablished and the location of that corner as previously restored or reestablished by distance and direction. Show the discrepancy on the plan view drawing under (d), above. Show the distances between the corner as previously restored or reestablished and (1) the corner as restored or reestablished, and (2) to at least 2 of the witness monuments shown on the drawing in (d), above.

See drawing below.

(f) Was the corner restored through acceptance of (1) an obliterated evidence location, or, (2) a found perpetuated location?

Restored through acceptance of a found perpetuated location.

(g&h) Was the corner reestablished through lost corner proportionate methods? If so, show the method, including the directions and distances to other public land survey corners used as evidence or used for proportioning in determining the corner location?



(i) I, William B. Cochrane
[type or print name] certify that the corner location shown on this record was determined by me or under my direction and control and that this U.S. Public Land Survey Monument Record is correct and complete to the best of my knowledge and belief.

William B. Cochrane October 7, 1986
Signature Date

Survey requested by; Edward Aeger 3-9-87
District Ranger Date

U.S. PUBLIC LAND SURVEY MONUMENT RECORD

Index No. A-9

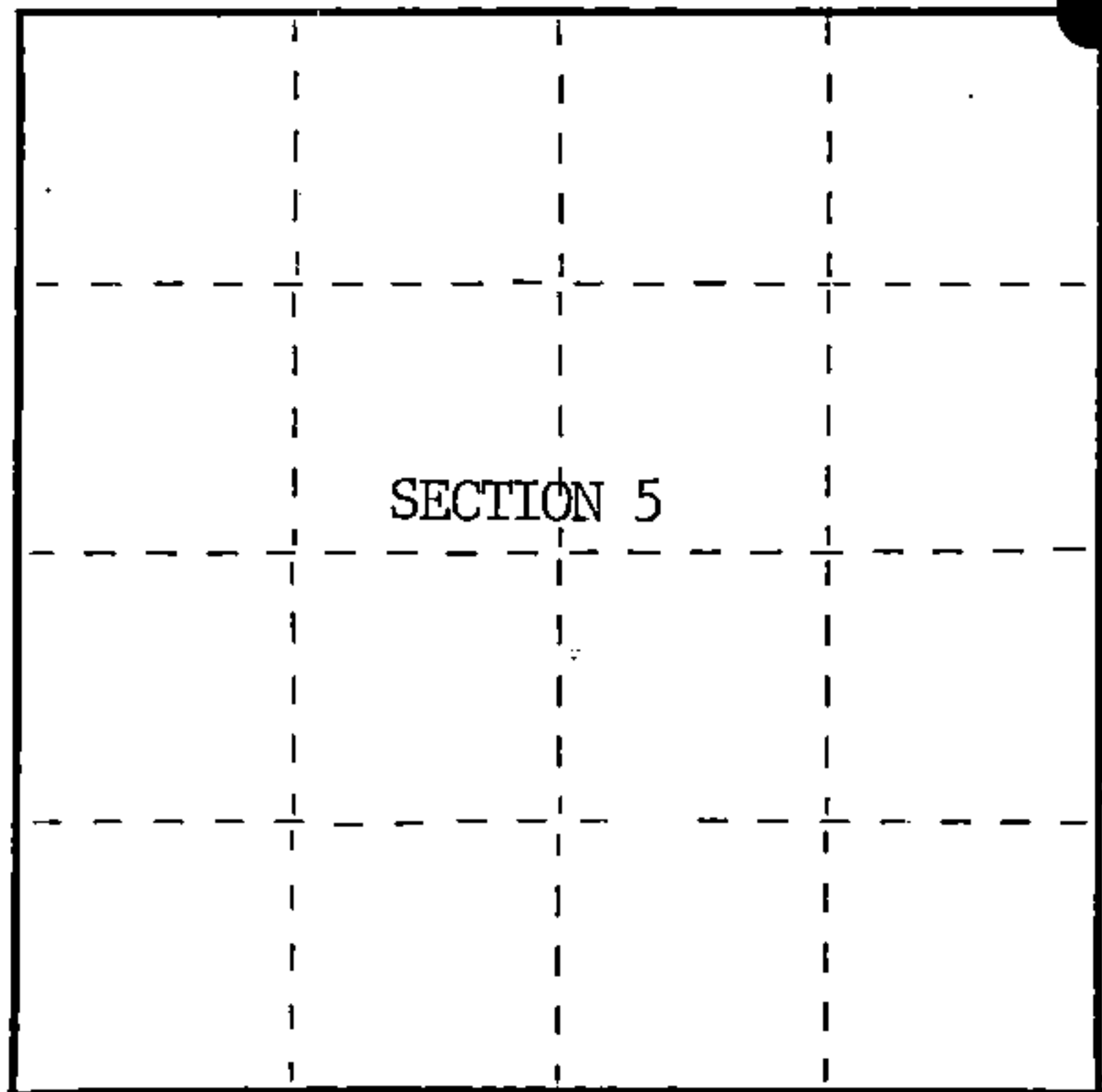
State of Wisconsin }
County of Forest } ss.

I, William B. Cochrane, do hereby
certify that on the 29th day
of July, 19 85, I found
evidence of the Northeast Section
corner of Section 5
Township 38, North, Range
14 East, Fourth Principal Meridian,
as described hereon; and that from this evidence
I established a new monument and accessories
as described hereon to perpetuate the original
location of this corner.

Resident witnesses:

David Brownell

State Plane Co-ordinates
N- 236,962.3710
E- 2,316,789.5310



○ = Corner monument restored.

History of original corner establishment:

Original Government Survey in 1858 by Alfred Millard.

Corner restored on June 14th, 1968, by Jean Resvick, a Registered
Land Surveyor with the U.S. Forest Service.

See Certified Land Corner Restoration Certificate #95890, filed in the
Registrar of Deeds Office, in the Forest County Courthouse.

Description of corner evidence found:

Found monument as described and in place, from which the following bear;

Cedar	12"	N37°E	9.00 feet-Cut down for Aerial Photo Project.
Maple	5"	S46°E	4.33 feet
Cedar	7"	S13°W	17.86 feet
Cedar	13"	N52°W	17.94 feet-Cut down for Aerial Photo Project.
4"x4" Sign Post		N45°W	1.30 feet

Description of monument and accessories I established to perpetuate the original location of this corner.

Blazed and scribed the following new bearing trees;

Maple	6"	N32°E	57.20 feet
Maple	7"	N51°W	84.37 feet
Steel Sign Post		SE	2.50 feet

Dated at Hiles, Wis., this 27th day of January, 19 86

Signature William B. Cochrane Title Land Surveyor Registration No. S-1107
(County Surveyor, Registered Land Surveyor, or other duly authorized official)

Office of Register of Deeds, County of Forest I hereby certify that the within
instrument was filed in this office for record on the 11th day of March, 19 87
at 3:30 o'clock P. M.

Paul Aschenbrenner
(Register of Deeds)

By _____ Deputy

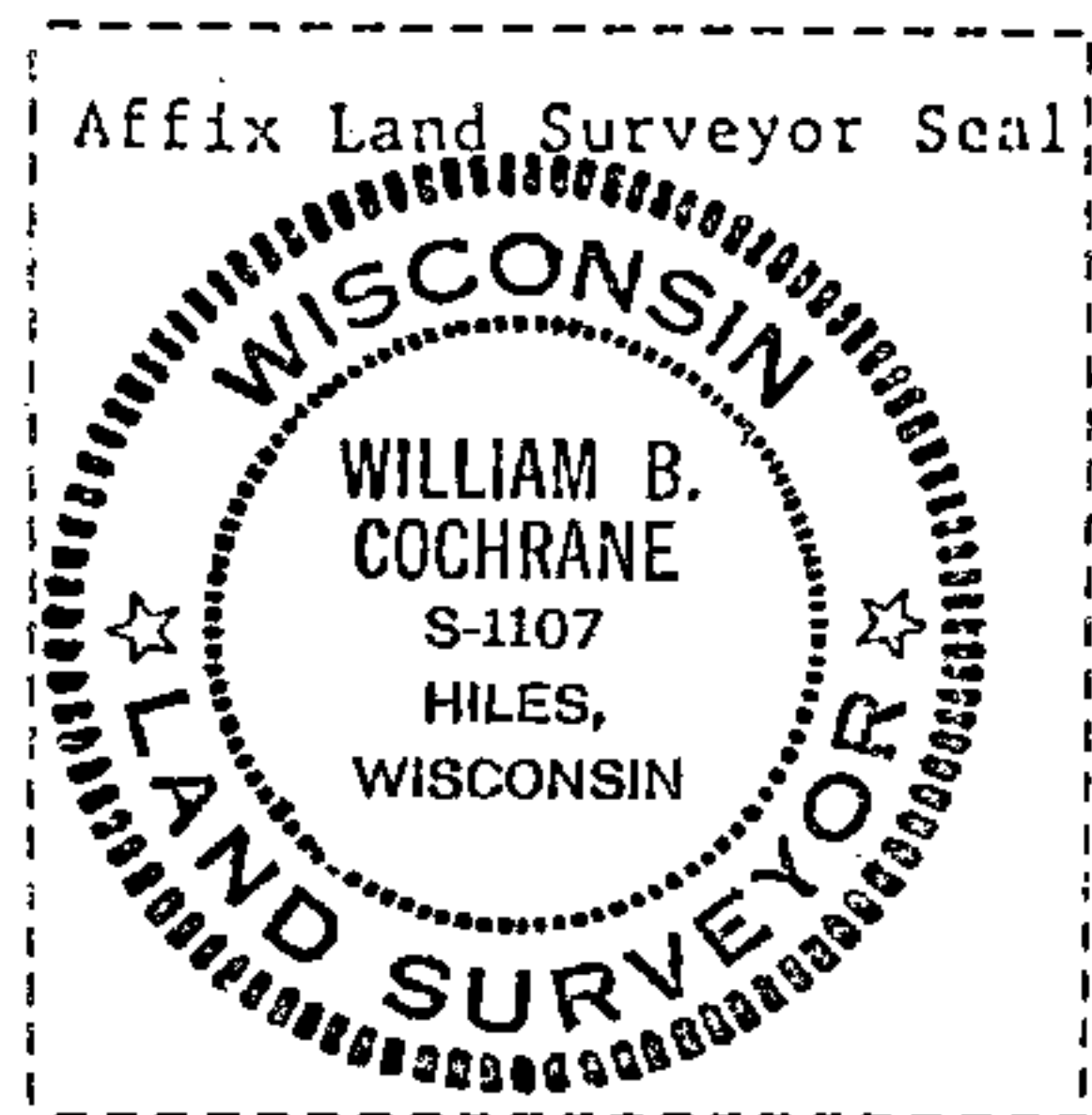
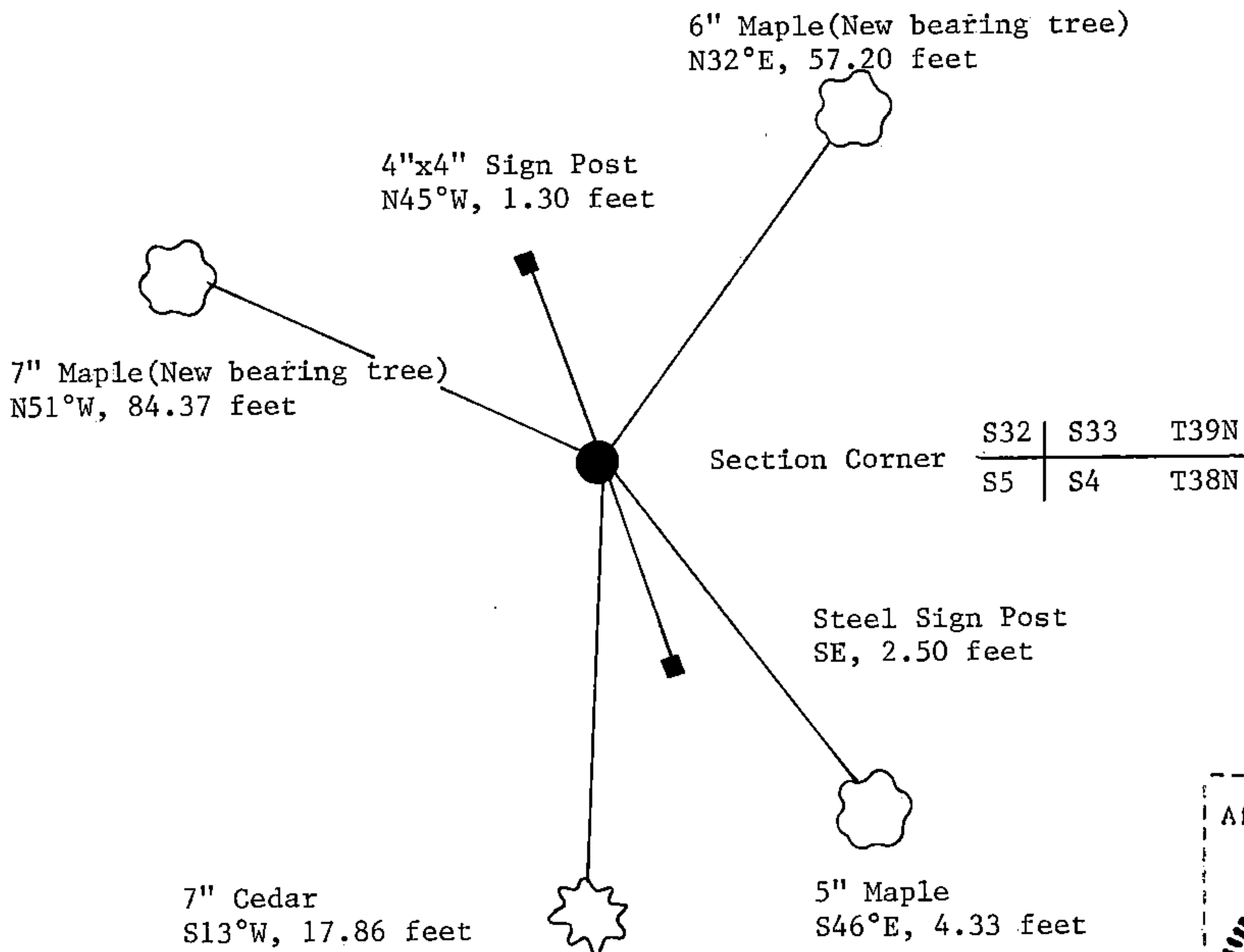
(e) Describe any material discrepancy between the location of the corner as restored or reestablished and the location of that corner as previously restored or reestablished by distance and direction. Show the discrepancy on the plan view drawing under (d), above. Show the distances between the corner as previously restored or reestablished and (1) the corner as restored or reestablished, and (2) to at least 2 of the witness monuments shown on the drawing in (d), above.

See drawing below.

(f) Was the corner restored through acceptance of (1) an obliterated evidence location, or, (2) a found perpetuated location?

Restored through acceptance of a found perpetuated location.

(g&h) Was the corner reestablished through lost corner proportionate methods? If so, show the method, including the directions and distances to other public land survey corners used as evidence or used for proportioning in determining the corner location?



(i) I, William B. Cochrane
(type or print name) certify that the corner location shown on this record was determined by me or under my direction and control and that this U.S. Public Land Survey Monument Record is correct and complete to the best of my knowledge and belief.

William B. Cochrane October 8, 1986
Signature Date

Survey requested by; Edward Lager 3-9-87
District Ranger Date

CERTIFIED LAND CORNER RESTORATION

State of Wisconsin

County of Forest

ss.

I Jean F. Resvick, do hereby certify that on the 14th day of June, 1968, I found evidence of the Northwest Section corner of Section 4 Township 38 North, Range 14 East, Fourth Principal Meridian, as described hereon; and that from this evidence I established a new monument and accessories as described hereon to perpetuate the original location of this corner:

Description of original monument and accessories and subsequent restorations:
Surveyed in 1858 by Alfred Millard.

80.00 chains West between Sections 4 and 33 set wood post.

Maple, 12 ins., N.38°W., 19 Lks.
Sugar, 14 ins., N.64°E., 3 Lks.
Fir, 10 ins., S.30°E., 26 Lks.
Cedar, 14 ins., S.50°W., 33 Lks.

Description of corner evidence found: Cedar snag, fallen with scribing. At recorded bearing and distance from fallen cedar found the point of a post. From the post point found the remains of a sugar stump bearing N.64°E., 1.9 ft. and a maple stump mound bearing N.38°W., 12.5 ft. Found a F.S. Poster nailed to a cedar that read "East 8 ft. to corner" This checked with post point found. F.S. Poster found was dated 1934. There was no evidence found of the fir at the recorded bearing and distance.

Description of monument and accessories I established to perpetuate the original location of this corner:

Replaced post point found with a 6 in. dia. concrete monument 4 ft. long 3.5 ft. in ground with brass cap marked:

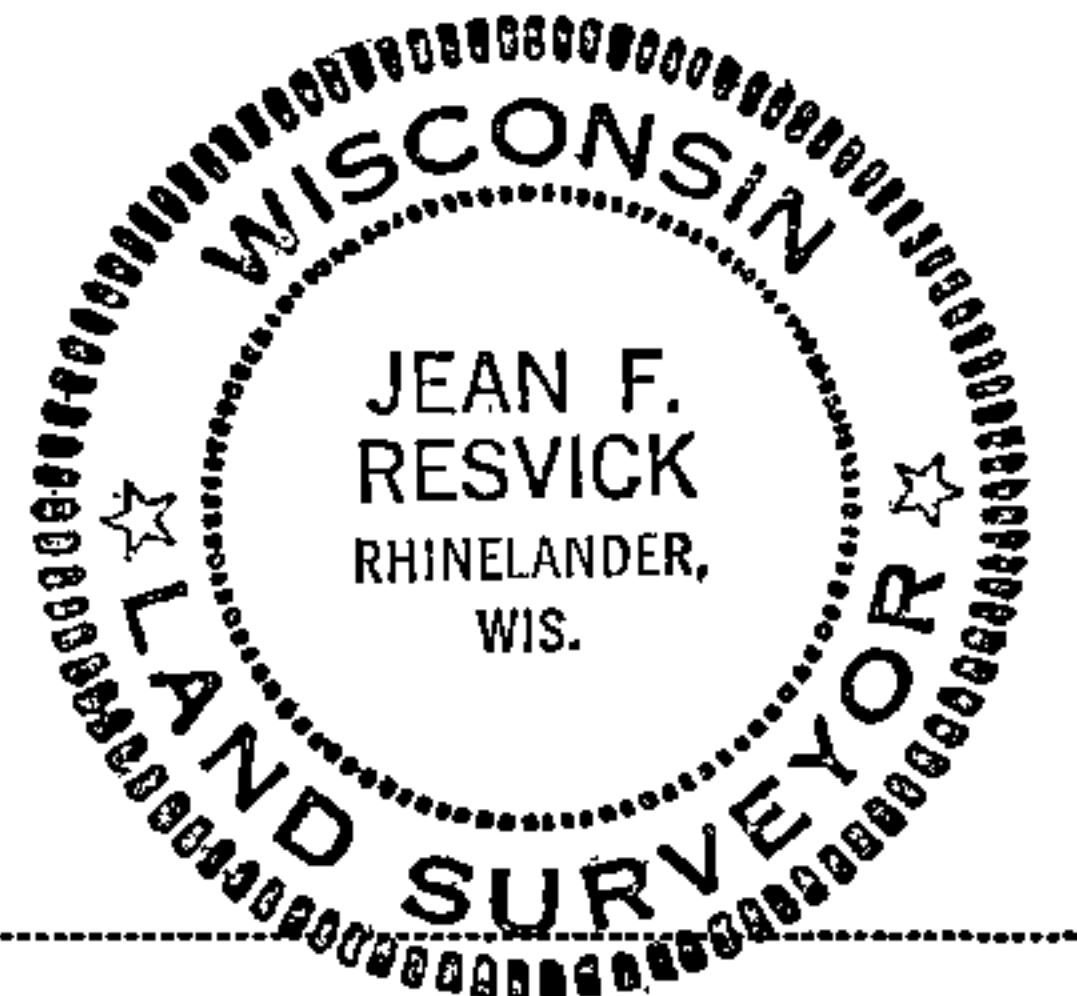
from which the following new blazed and scribed bearing trees bear:

T39N R14E

S32	S33
S5	S4

T38N
1968
S-802

Cedar, 10 ins., N.37°E., 9.00 ft. or 13.64 Lks.
Maple, 3 ins., S.46°E., 4.33 ft. or 6.56 Lks.
Cedar, 7 ins., S.13°30'W., 17.86 ft. or 27.06 Lks.
Cedar, 12 ins., N.52°W., 17.94 ft. or 27.18 Lks.
Set 4 x 4 cedar post N.45°W., 1.3 ft. from corner



Resident witnesses

Dated at Rhinelander, Wisconsin, this 27th day of August, 1968.

Signature Jean F. Resvick Title Cadastral Surveyor
(County Surveyor, Registered Land Surveyor, or other duly authorized official)

Surveyors Registration No. S-802

DOCUMENT
Number
95890

Office of Register of Deeds County of Forest

I hereby certify that the within instrument was filed in this office for record on the 31st day of January, 1969, and was filed in Book No. I Page No. A-9 of County Records.

Signature Eugene Staszny Title Register of Deeds

Township 38 North, Range 14 East, Section 4, Index No. A-9, Page No.

4291439.0000