

CERTIFIED LAND CORNER RESTORATION

State of Wisconsin }  
County of Forest } ss.

I, William B. Cochrane, do hereby certify that on the 5th day of November, 1974, I found evidence of the South Quarter corner of Section 30 Township 39 North, Range 14 East, Fourth Principal Meridian, as described hereon; and that from this evidence I established a new monument and accessories as described hereon to perpetuate the original location of this corner:

Description of original monument and accessories and subsequent restorations:

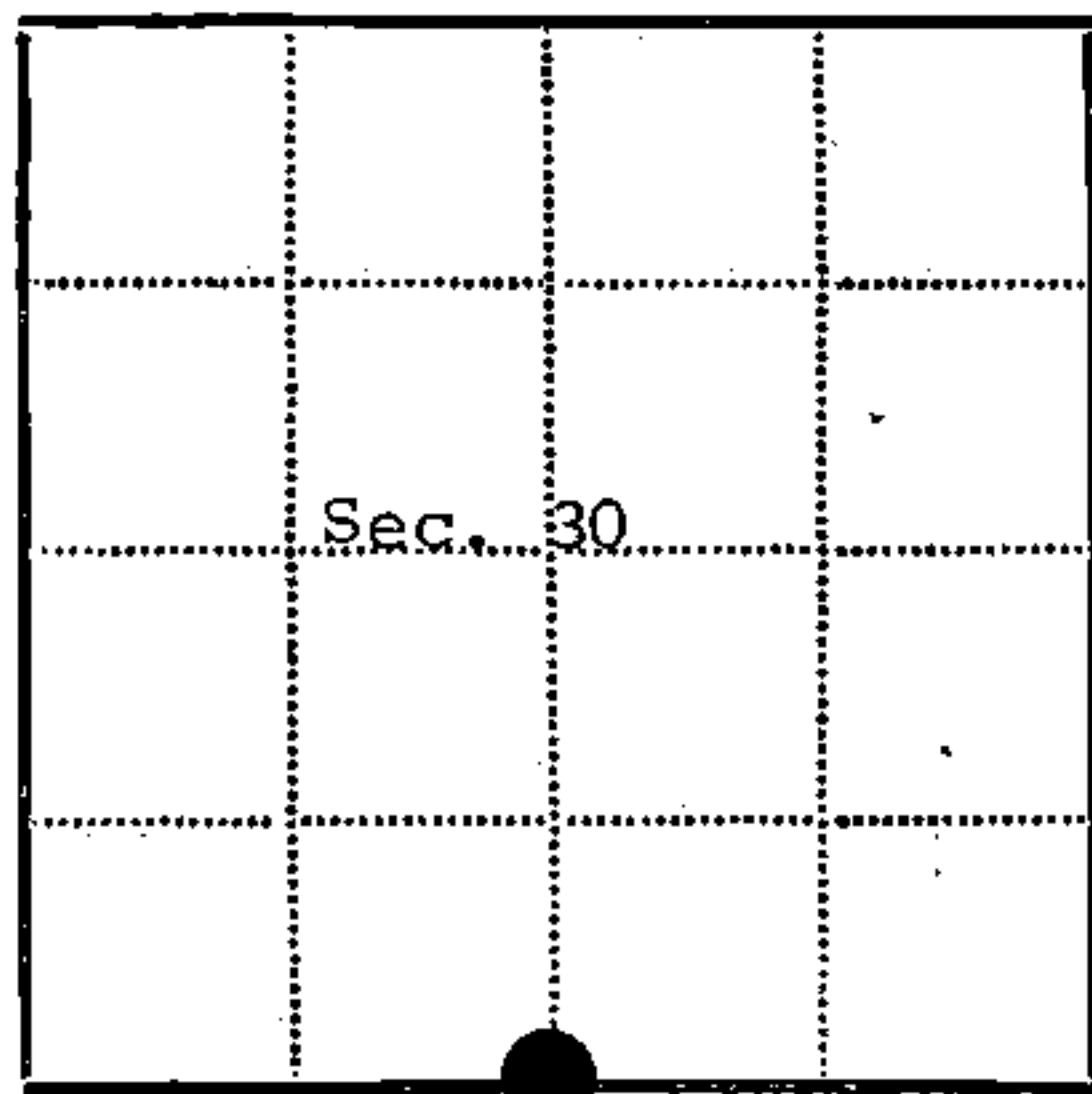
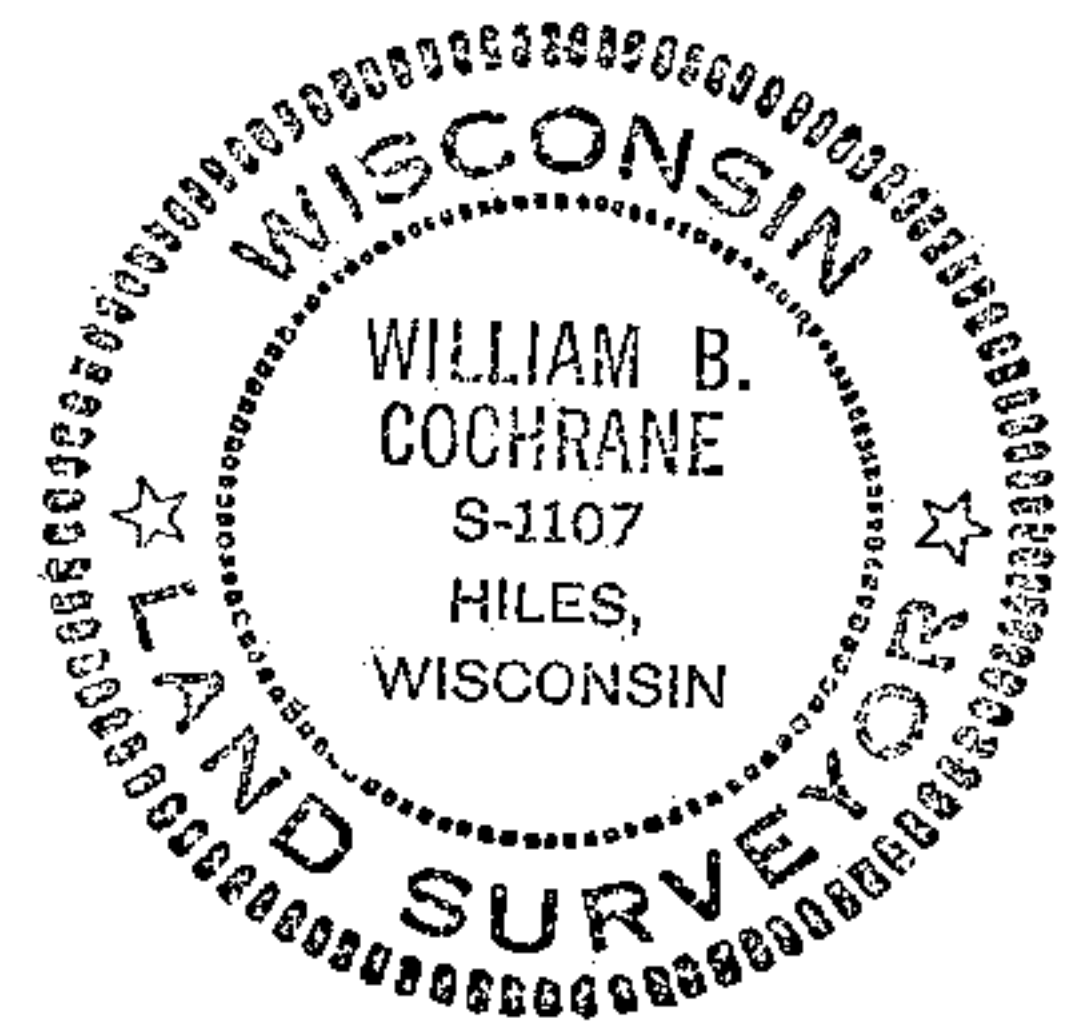
Surveyed by Wm. E. Daugherty and Alex McDill in April and May, 1865.  
East corrected between Sections 30 and 31.  
44.93 chains set quarter section post.  
Elm, 12", S76°E, 32 lks.  
Hemlock, 12", N13°E, 14 lks.

Description of corner evidence found:

3"x3" scribed cedar post. 3" diameter, x 6 feet long steel pipe driven in the post hole. The cedar post was wired to the pipe. Forest Service employees reported in 1934 of finding a scribed cedar post, a basswood stump, 20", N45°E, 33 lks., scribed, a maple stump, 18", S30°W, 25 lks., scribed, and a location poster nailed to a 8" hemlock, bears N45°W, 33 lks. I found a decayed basswood stump, N45°E, 33 lks., a decayed maple stump, S30°W, 25 lks. and a down hemlock bears N45°W, 33 lks. with the poster. The section corner common to sections 29, 30, 31 and 32 bears east, 41.0 chains by compass and measurement.

Description of monument and accessories I established to perpetuate the location of this corner:

I replaced the pipe with a 2 inch inside diameter, galvanized pipe, 3 feet long, filled with concrete with a brass cap stamped:  
T39N, R14E, 1/4, S30, S31, 1975, S-1107.  
From which the following bear:  
Maple, 7", N7°E, 21.62 feet.  
Maple, 7", S58°W, 12.13 feet.  
Set a steel sign post, NW of the monument, 0.50 feet.



● - Corner monument restored  
□ -

Resident witnesses.....

Dated at Three Lakes Wisconsin, this 16th day of June 1975.

Signature William B. Cochrane Title Survey Technician  
(County Surveyor, Registered Land Surveyor, or other duly authorized official)

Surveyors Registration No. S-1107 DOCUMENT NUMBER 107237

Office of Register of Deeds County of Forest

I hereby certify that the within instrument was filed in this office for record on the 16th day of June 1975, and was filed in Book No. Page No. of County Records.

Signature Eugene Staszny Title Register of Deeds

Township 39 North, Range 14 East, Section 30, Index No. V-3, Page No.

43914300020

Handwritten marks and numbers at the bottom right corner.

U.S. PUBLIC LAND SURVEY MONUMENT RECORD

Index No. V-3

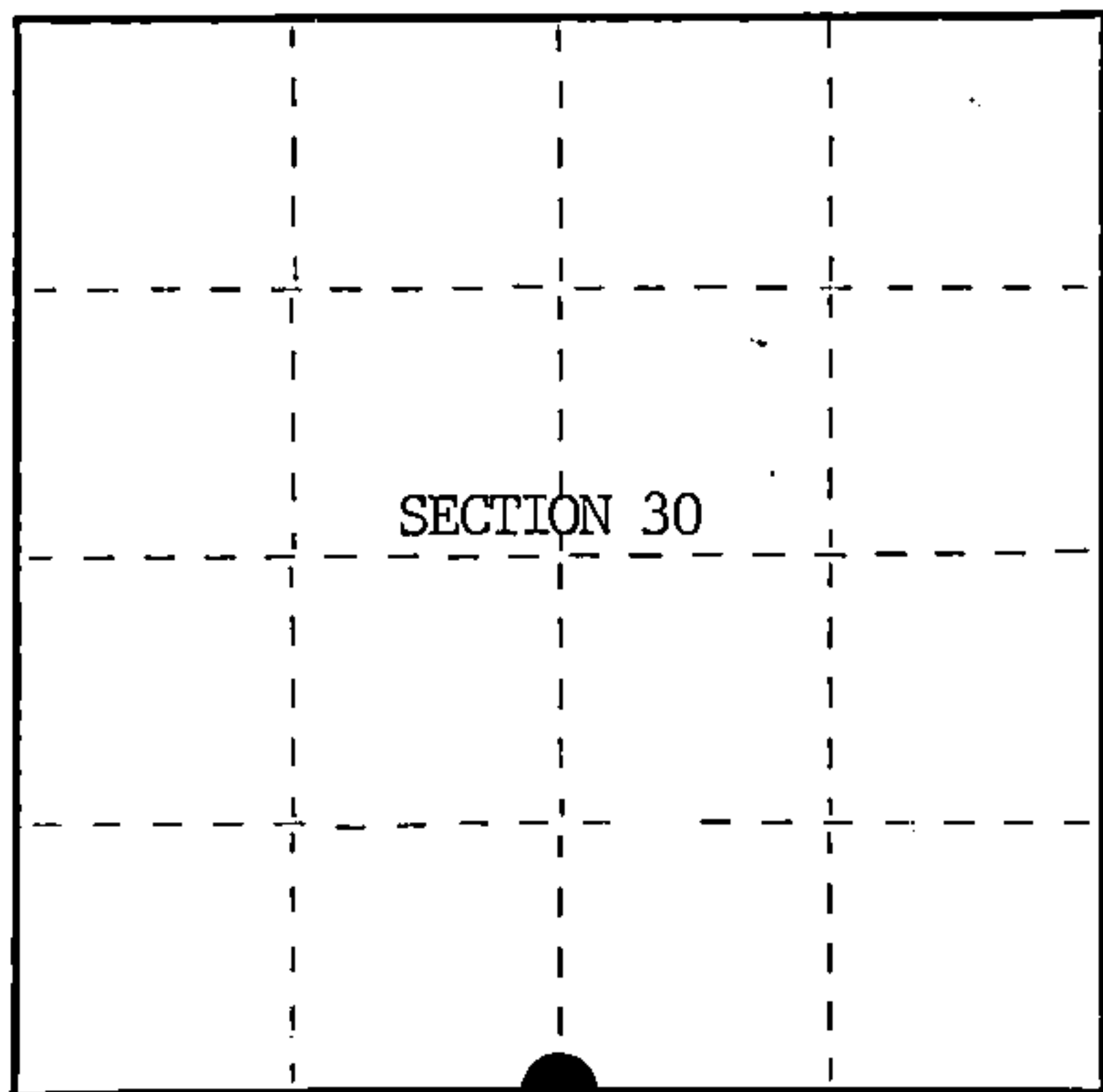
State of Wisconsin }  
County of Forest } ss.

I, William B. Cochrane, do hereby certify that on the 14th day of August, 1985, I found evidence of the South Quarter corner of Section 30 Township 39 North, Range 14 East, Fourth Principal Meridian, as described hereon; and that from this evidence I established a new monument and accessories as described hereon to perpetuate the original location of this corner.

Resident witnesses:

David Brownell

State Plane Co-ordinates  
N- 241,974.6570  
E-2,309,189.8910



○ = Corner monument restored.

History of original corner establishment:

Original Government Survey in 1865 by William E. Daugherty and Alex McDill.

Corner restored on November 5th, 1975, by William B. Cochrane, a Registered Land Surveyor with the U.S. Forest Service.

See Certified Land Corner Restoration Certificate #10723, filed in the Registrar of Deeds Office, in the Forest County Courthouse.

Description of corner evidence found:

Found monument as described and in place, from which the following bear;

Maple	9"	N 7°E	21.62 feet-Cut down for Aerial Photo Project.
Maple	9"	S58°W	12.13 feet-Cut down for Aerial Photo Project.
Steel Sign Post		NW	0.50 feet

Description of monument and accessories I established to perpetuate the original location of this corner.

Blazed and scribed the following new bearing trees;

Basswood	14"	S60°E	56.54 feet
Maple	6"	S28°W	84.42 feet

Re-set Steel Sign Post SE 4.00 feet

Dated at Hiles, Wis., this 16th day of January, 1986

Signature William B. Cochrane Title Land Surveyor Registration No. S-1107  
(County Surveyor, Registered Land Surveyor, or other duly authorized official)

Office of Register of Deeds, County of Forest, I hereby certify that the within instrument was filed in this office for record on the 11th day of March, 1987 at 3:30 o'clock P. M.

Paul Aschenbrenner  
(Register of Deeds)

By Deputy

FORM NO. 985-A

H.C. Miller Company

Stock No. 26273

DOCUMENT NUMBER 132389

43914300020

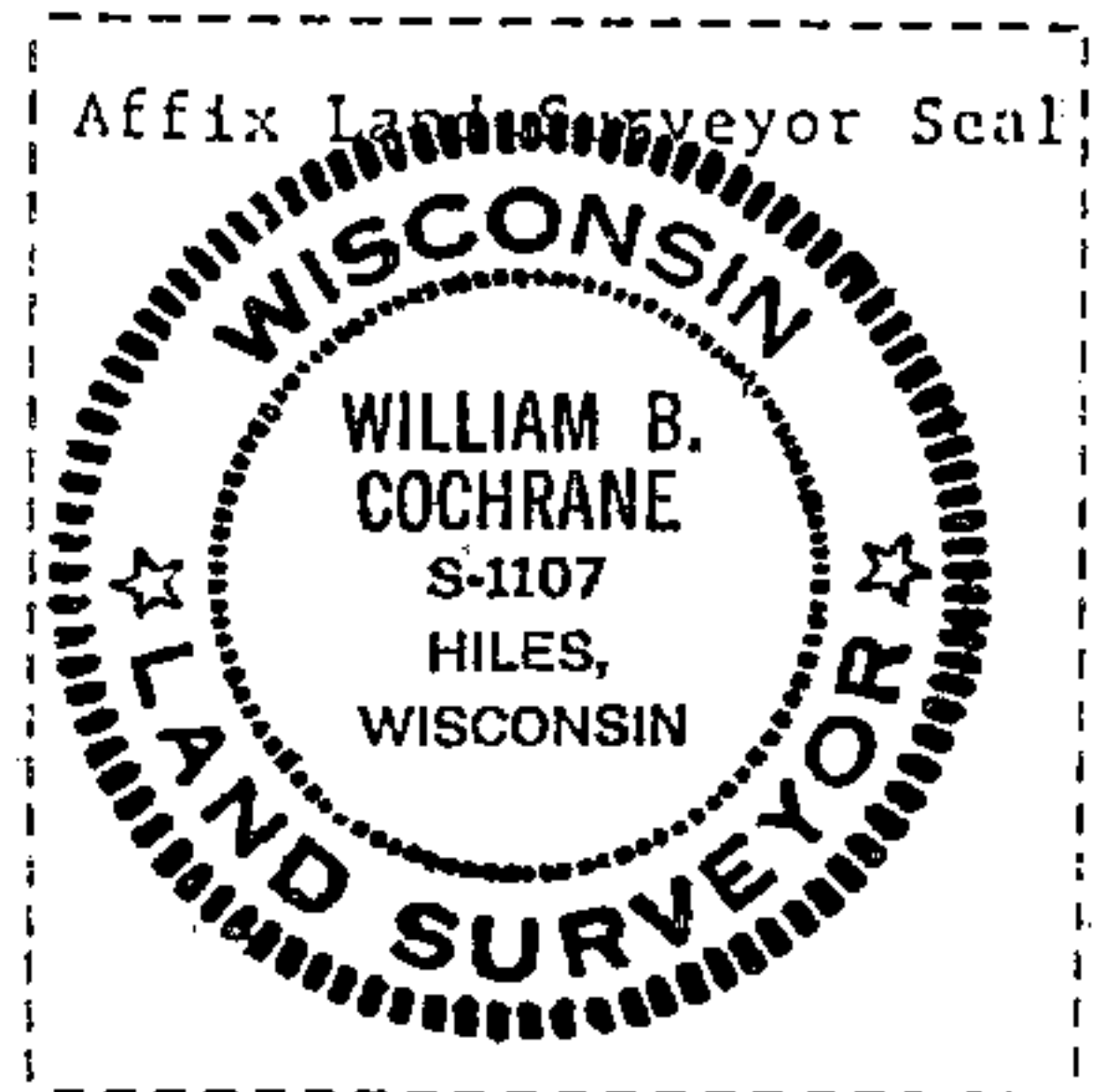
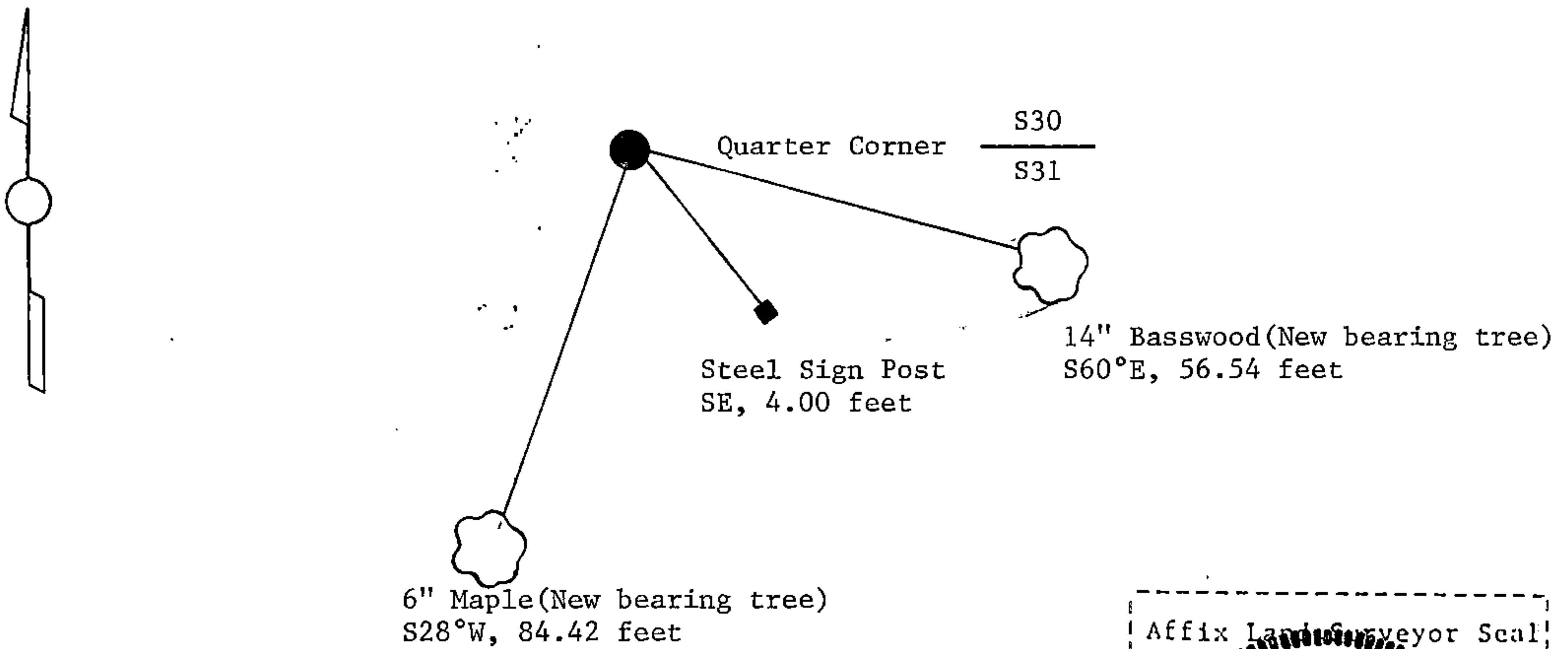
(e) Describe any material discrepancy between the location of the corner as restored or reestablished and the location of that corner as previously restored or reestablished by distance and direction. Show the discrepancy on the plan view drawing under (d), above. Show the distances between the corner as previously restored or reestablished and (1) the corner as restored or reestablished, and (2) to at least 2 of the witness monuments shown on the drawing in (d), above.

See drawing below.

(f) Was the corner restored through acceptance of (1) an obliterated evidence location, or, (2) a found perpetuated location?

Restored through acceptance of a found perpetuated location.

(g&h) Was the corner reestablished through lost corner proportionate methods? If so, show the method, including the directions and distances to other public land survey corners used as evidence or used for proportioning in determining the corner location?



(i) I, William B. Cochrane  
(type or print name) certify that the corner location shown on this record was determined by me or under my direction and control and that this U.S. Public Land Survey Monument Record is correct and complete to the best of my knowledge and belief.

William B. Cochrane October 7, 1986  
Signature Date

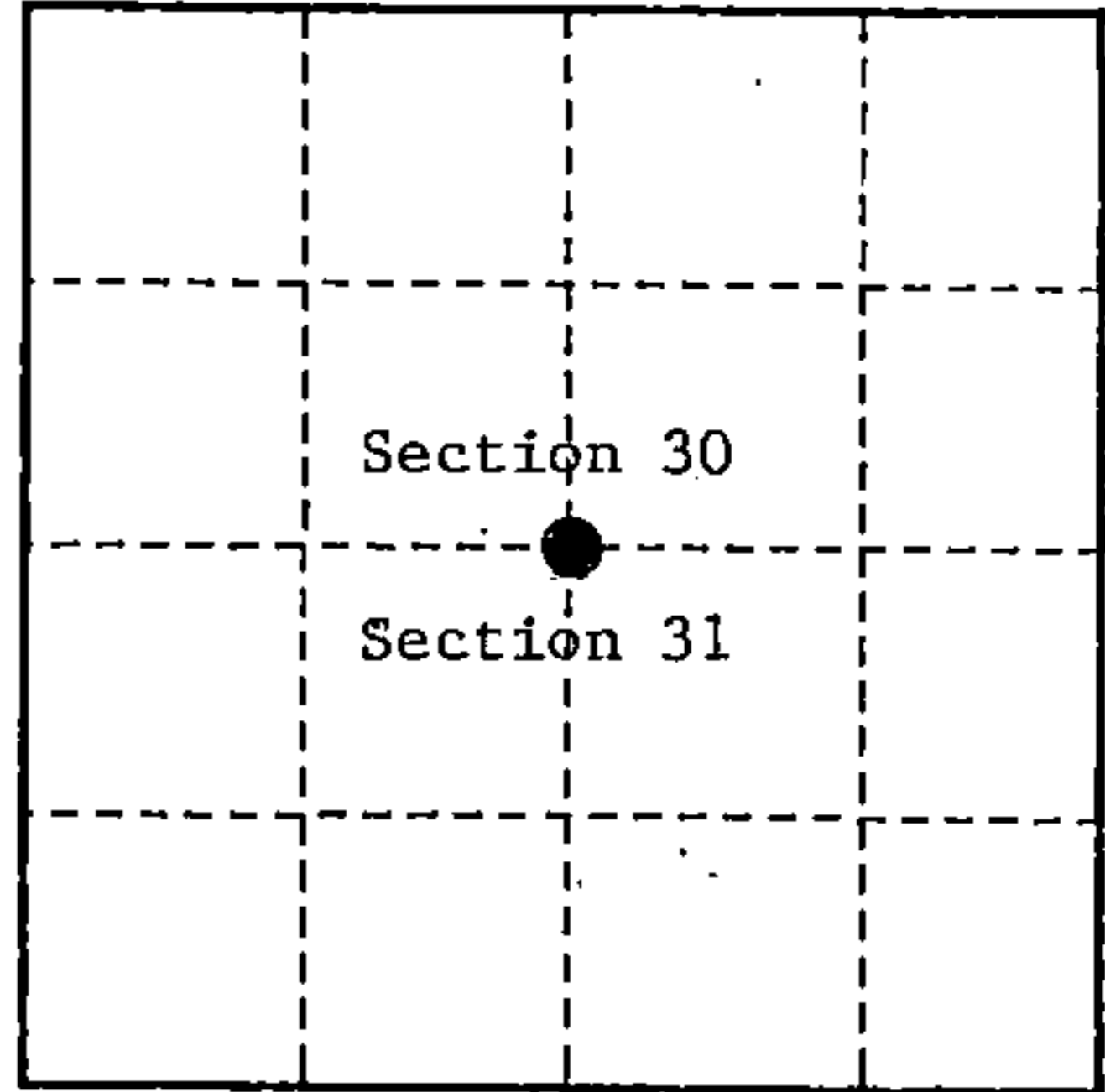
Survey requested by; Edward [Signature] 3-9-87  
District Ranger Date

U. S. PUBLIC LAND SURVEY MONUMENT RECORD

INSTRUCTIONS:

This record shall show the location of the corner and shall include all of the following nine elements (a through i).

- (a) Identify the corner by reference to the U.S. public land survey system.  
 ○ - Corner monument restored.  
 Quarter Corner common to Sections 30 and 31,  
 T39N, R14E, Forest County, Wisconsin



- (b) Describe any record evidence, monument evidence, occupational evidence, testimonial evidence or any other material evidence you considered, and whether the monument was found or placed.

Original Government Survey in 1865 by William E. Daugherty and Alex McDill.

In 1975, William B. Cochrane, Land Surveyor with the Forest Service, restored the corner position. See previously recorded Land Corner Certificate #10723. In 1985 Cochrane cut down the bearing trees set in 1975 for a current Air Photo Project. At the corner position is a 2" Diameter galvanized iron pipe, 3 feet long, 2½ feet in the ground, with a brass cap stamped; T39N, R14E, 1/4, S30, S31, 1975, S-1107. 1985 Bearing Trees;

Basswood	14"	S60°E	56.54 feet
Maple	6"	S28°W	84.42 feet
Steel Sign Post		Southeast	4.00 feet

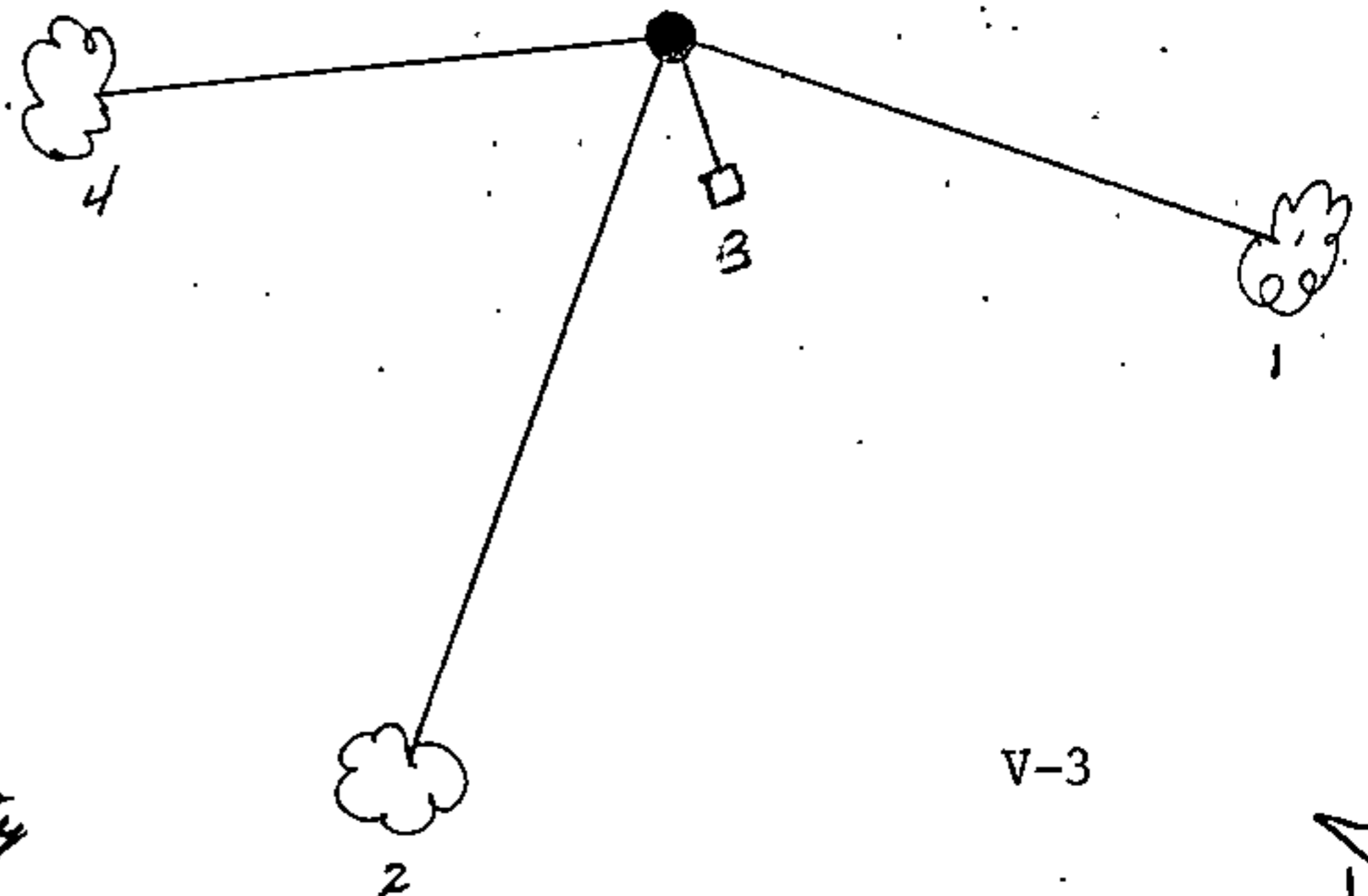
On 6-26-99, Gary L. Pisoni, RLS, found the monument as described above, found the bearing trees as described below and made a new bearing tree as described below.

See previously recorded Land Corner Certificate, Document # 132389.

- (c) In the plan view drawing below, provide reference ties to at least 4 witness monuments, or, if the location is within a municipality, to at least 2 witness monuments. (witness monuments shall be made of concrete, natural stone, iron or other equally durable material.)

- (d) Show a plan view drawing depicting the relevant monuments and reference ties which is sufficient in detail to enable accurate relocation of the corner monument if the corner monument is disturbed. Indicate north.

1. Basswood, 18", S60°E, 56.54 feet
2. Sugar Maple, 10", S28°W, 84.42 feet
3. Steel Sign Post, S18°E, 4.00 feet
4. Sugar Maple, 9", S84°W, 56.63 feet (NBT)



REGISTER'S OFFICE  
 Forest County, Wis.  
 Received for record this 27<sup>th</sup> day  
 of October A.D., 1999 at  
10:05 o'clock A.M. and recorded  
 in Vol. Corner Restoration  
 page V-3  
Kay Swanson, Deputy  
 Register of Deeds

(e) Describe any material discrepancy between the location of the corner as restored or reestablished and the location of that corner as previously restored or reestablished by distance and direction. Show the discrepancy on the plan view drawing under (d), above. Show the distances between the corner as previously restored or reestablished and (1) the corner as restored or reestablished, and (2) to at least 2 of the witness monuments shown on the drawing in (d), above.

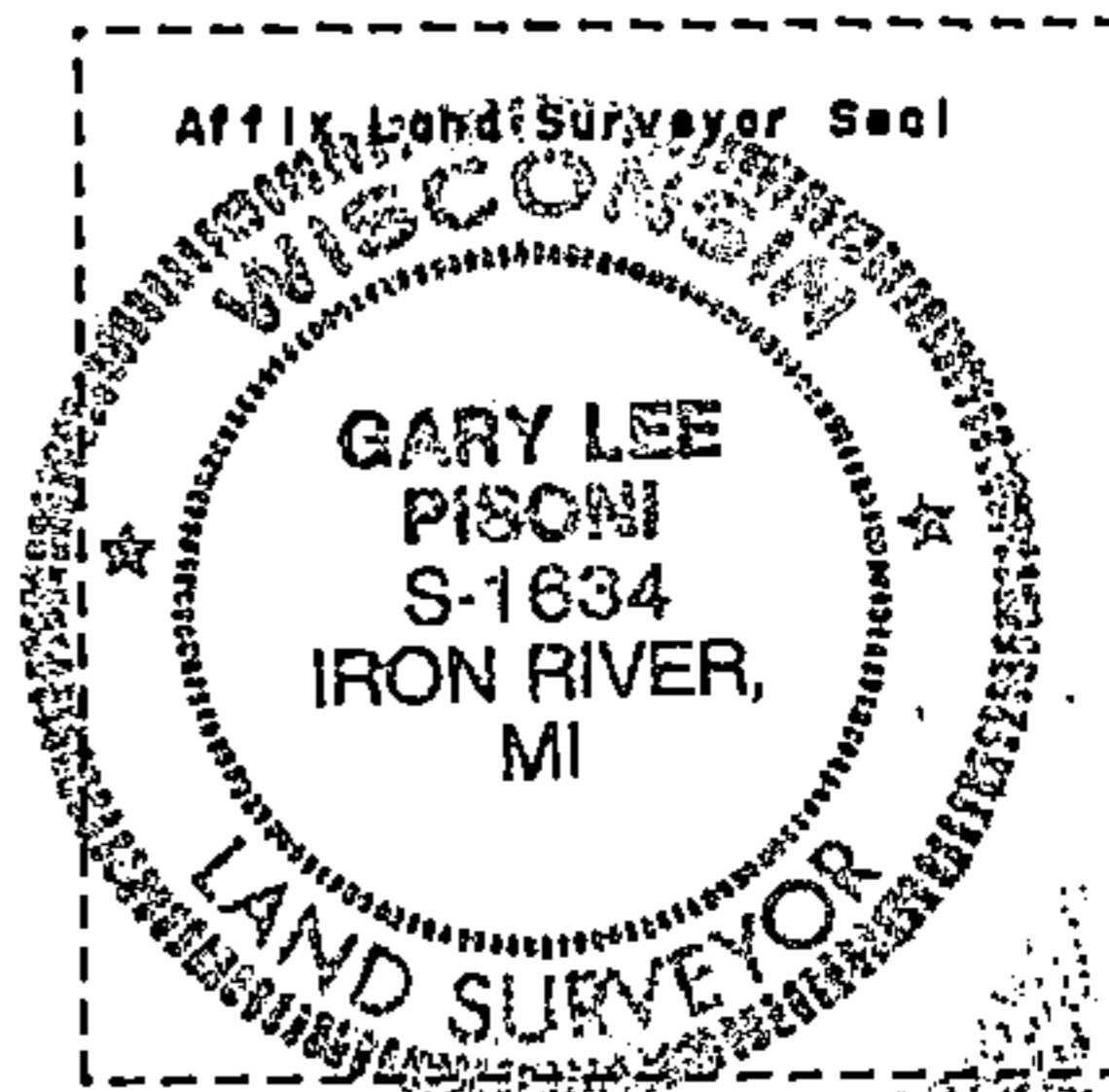
None

(f) Was the corner restored through acceptance of (1) an obliterated evidence location, or, (2) a found perpetuated location?

Found perpetuated location.

(g & h) Was the corner reestablished through lost corner proportionate methods? If so, show the method, including the directions and distances to other public land survey corners used as evidence or used for proportioning in determining the corner location?

(1) I, Gary L. Pisoni  
(type or print name) certify that the corner location shown on this record was determined by me or under my direction and control and that this U.S. Public Land Survey Monument Record is correct and complete to the best of my knowledge and belief.



Gary L. Pisoni 10-2-99  
Signature Date

CERTIFICATE READY FOR FILING:

C. B. [Signature]  
District Ranger