

U.S. PUBLIC LAND SURVEY MONUMENT RECORD

Index No. R-24, 25

State of Wisconsin

County of Forest

ss.

I, William B. Cochrane, do hereby certify that on the 10th day of June, 1986, I found evidence of the Meander Corner (West Shore) corner of Between Sections 24 and 25 Township 39, North, Range 14 East, Fourth Principal Meridian, as described hereon; and that from this evidence I established a new monument and accessories as described hereon to perpetuate the original location of this corner.

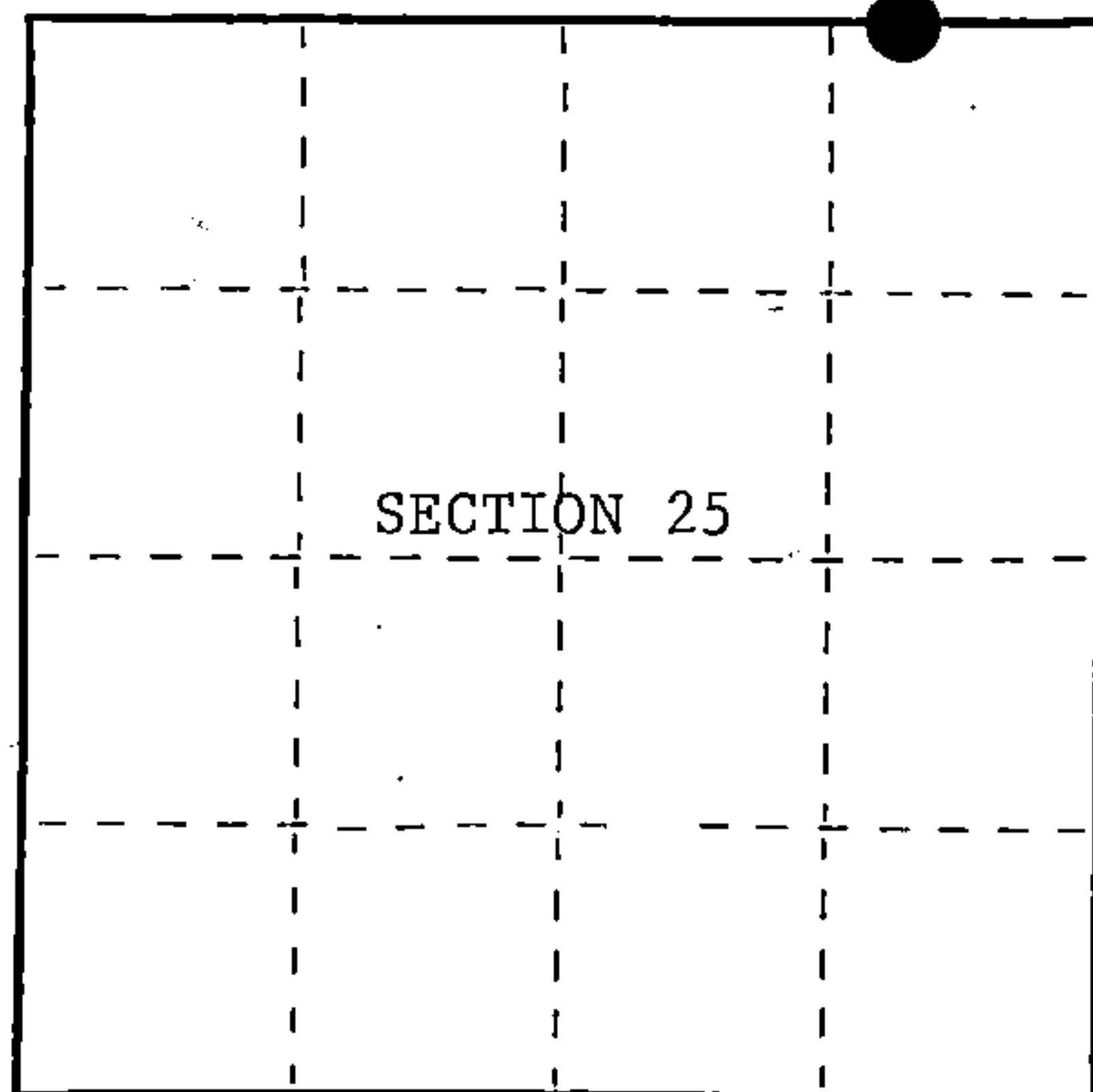
Resident witnesses:

David Brownell

State Plane Co-ordinates

N- 247,939.7420

E-2,336,289.9410



○ = Corner monument restored.

History of original corner establishment:

Original Government Survey in 1865 by William E. Daugherty and Alex McDill. East on true line between Sections 24 and 25, at 62.50 chains, to lake. Set meander post from which the following bear;

Tamarac	6"	N40°E	11 lks.
Tamarac	6"	S80°W	15 lks.

Description of corner evidence found:

Found a 2"x2"x48" Cedar Pickett with red paint on top.

No other corner evidence was recovered.

I accept the wood pickett as the best available evidence for restoring the corner position.

Description of monument and accessories I established to perpetuate the original location of this corner.

In place of wood pickett, set a 2½ inch diameter aluminum pipe monument, 5 feet long, 4 feet in the ground, with an aluminum cap stamped; T39N, R14E, Meander Corner, S24, S25, 1986, S-1107. From which the following new blazed and scribed bearing - trees bear;

Cedar	8"	N85°W	27.80 feet
Cedar	6"	North	33.63 feet
Steel Sign Post		East	1.00 feet
Shore Line of Long Lake		East	+ 20.00 feet

Dated at Hiles, Wis., this 27th day of January, 1987Signature William B. Cochrane Title Land Surveyor Registration No. S-1107
(County Surveyor, Registered Land Surveyor, or other duly authorized official)

Office of Register of Deeds, County of Forest, I hereby certify that the within instrument was filed in this office for record on the 11th day of March, 1987 at 3:30 o'clock P. M.

Faul Aschenbrenner
(Register of Deeds)

By _____ Deputy

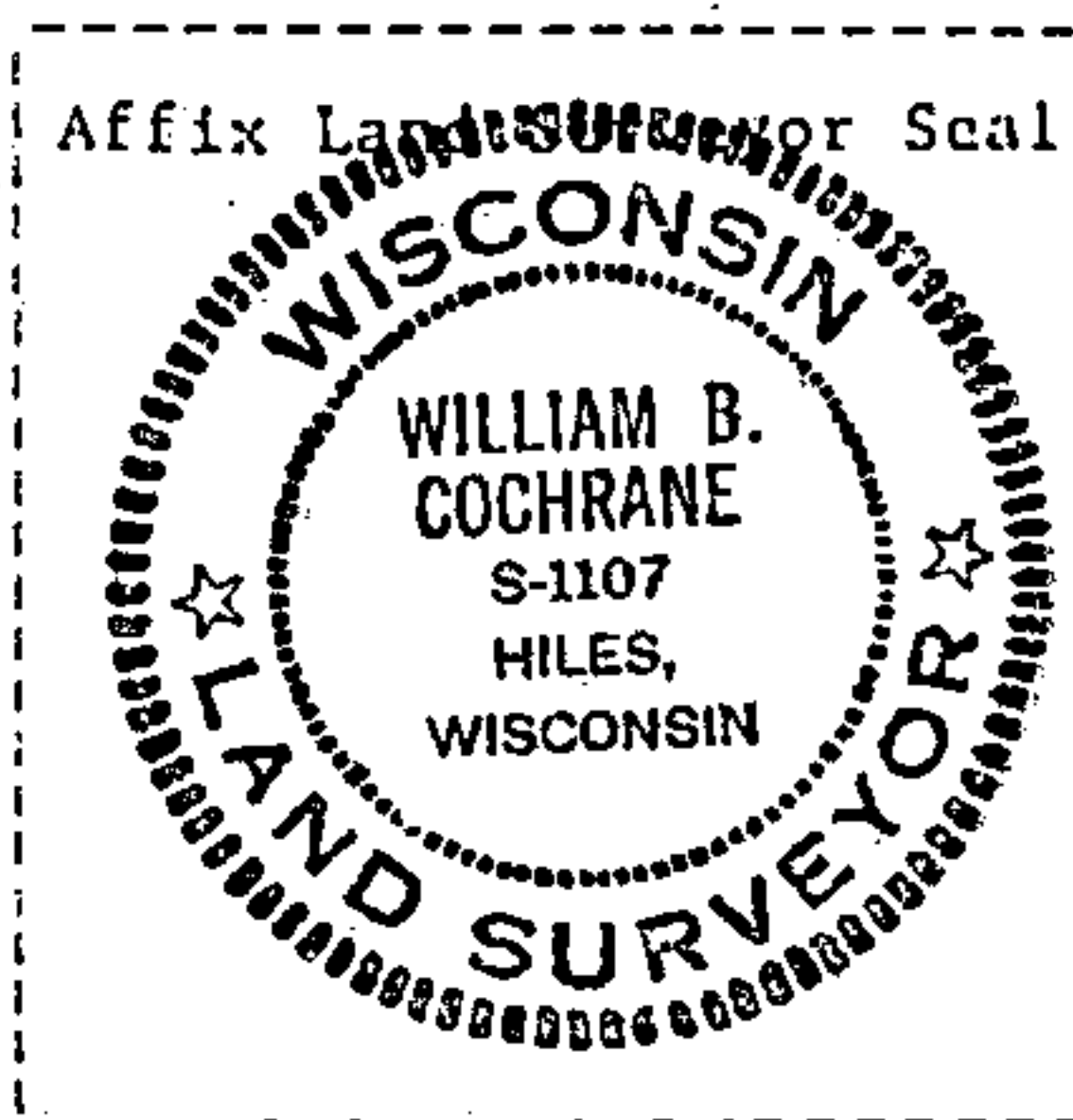
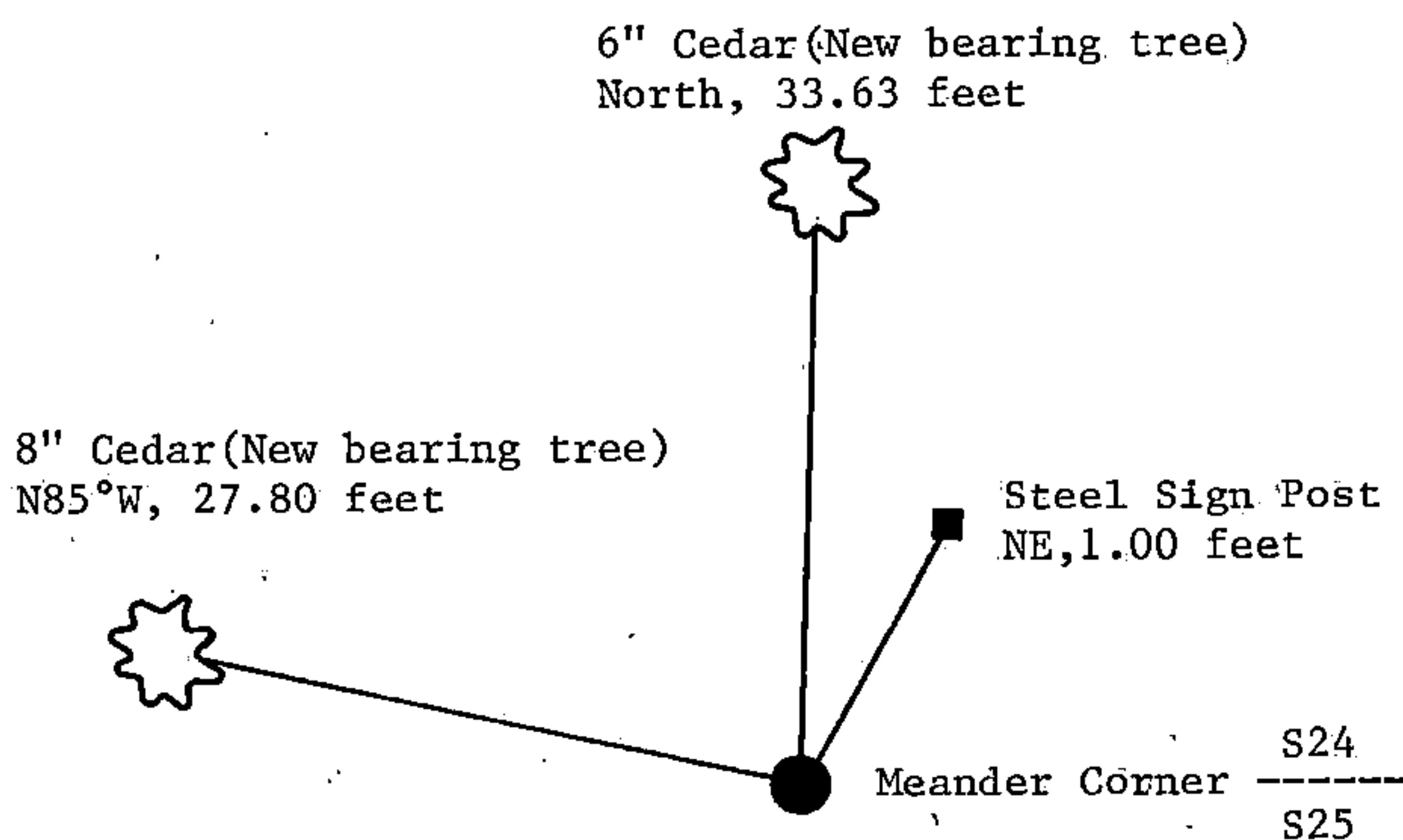
- (e) Describe any material discrepancy between the location of the corner as restored or reestablished and the location of that corner as previously restored or reestablished by distance and direction. Show the discrepancy on the plan view drawing under (d), above. Show the distances between the corner as previously restored or reestablished and (1) the corner as restored or reestablished, and (2) to at least 2 of the witness monuments shown on the drawing in (d), above.

See drawing below.

- (f) Was the corner restored through acceptance of (1) an obliterated evidence location, or, (2) a found perpetuated location?

Restored from accepted evidence.

- (g&h) Was the corner reestablished through lost corner proportionate methods? If so, show the method, including the directions and distances to other public land survey corners used as evidence or used for proportioning in determining the corner location?



- (i) William B. Cochrane
[type or print name] certify that the corner location shown on this record was determined by me or under my direction and control and that this U.S. Public Land Survey Monument Record is correct and complete to the best of my knowledge and belief.

William B. Cochrane January 27, 1987
Signature Date

Survey requested by, Edward Geyer 3-9-87
District Ranger Date