

U.S. PUBLIC LAND SURVEY MONUMENT RECORD

Index No. P-17

State of Wisconsin }
 County of Forest } ss.

I, William B. Cochran, do hereby
 certify that on the 6th day
 of October, 1986, I found
 evidence of the East Quarter
 corner of Section 22
Township 39, North, Range
14 East, Fourth Principal Meridian,
 as described hereon; and that from this evidence
 I established a new monument and accessories
 as described hereon to perpetuate the original
 location of this corner.

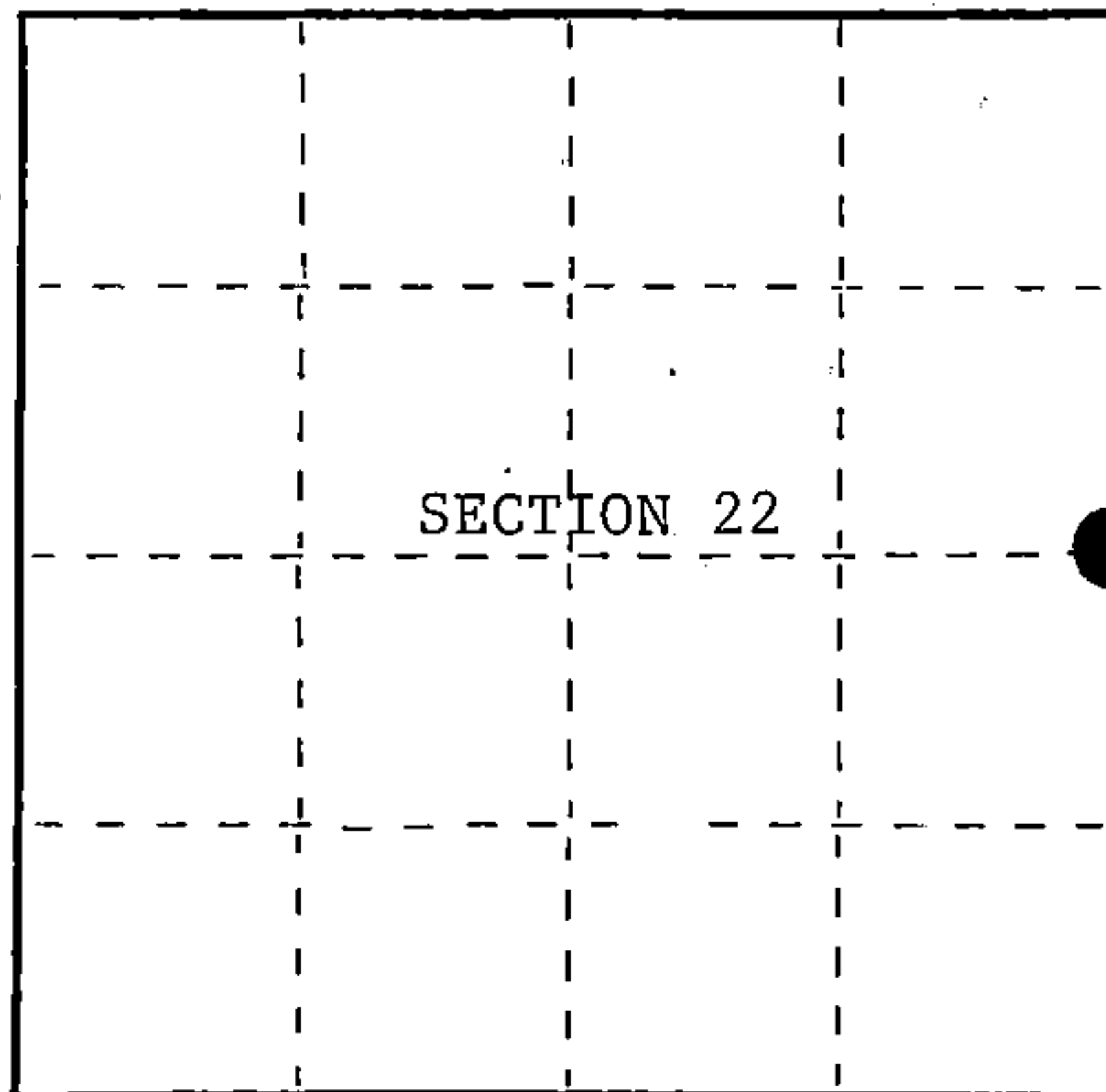
Resident witnesses:

David BrownellTony Tillman

State Plane Co-ordinates

N- 250,539.6165

E-2,327,182.5400



○ = Corner monument restored.

History of original corner establishment:

Original Government Survey in 1865 by William E. Daugherty and Alex McDill.
 North between Sections 22 and 23, at 40 chains, set Quarter Section Post to Sections
 22 and 23. In 1916, Melindy, a Local Surveyor, set a 4"x4" Cedar Post from original
 bearing tree evidence. Melindy blazed and scribed the following bearing trees;

Maple	10"	S44°15'E	45
Maple	20"	N59°00'W	70 1/4
Maple	16"	N23°E	47 2/3

Melindy also sub-divided Section 23.
 Description of corner evidence found:

No corner evidence was recovered.

The corner position was restored using the bearing of the East-West Quarter Line in
 Section 23 and the distance Melindy recorded from the Center-West 1/16 of Section 23.
 Melindys wood post and bearing tree remains were recovered at the Center-West 1/16
 of Section 23 and the Center 1/4 of Section 23.

Description of monument and accessories I established to perpetuate the original location of this corner.

At the corner position, set a 2½ inch diameter aluminum pipe monument, 3 feet long,
 2½ feet in the ground, with an aluminum cap stamped; T39N, 1/4, S22, S23, 1986, S-1107.
 From which the following new blazed and scribed bearing trees bear;

Maple	18"	S10°E	41.11 feet
Basswood	16"	S57°W	27.50 feet
Steel Sign Post		North	0.75 feet

Dated at Hiles, Wis., this 3rd day of February, 1987

Signature William B. Cochran Land Surveyor Registration No. S-1107
 (County Surveyor, Registered Land Surveyor, or other duly authorized official)

Office of Register of Deeds, County of Forest, I hereby certify that the within
 instrument was filed in this office for record on the 11th day of March, 1987
 at 3:30 o'clock P. M.

Paul Aschenbrenner
 (Register of Deeds)

By _____ Deputy

FORM NO. 985-A

H.C. Miller Company
Madison, Wisconsin

Stock No. 26273

DOCUMENT NUMBER 132374

439142220000

- (e) Describe any material discrepancy between the location of the corner as restored or reestablished and the location of that corner as previously restored or reestablished by distance and direction. Show the discrepancy on the plan view drawing under (d), above. Show the distances between the corner as previously restored or reestablished and (1) the corner as restored or reestablished, and (2) to at least 2 of the witness monuments shown on the drawing in (d), above.

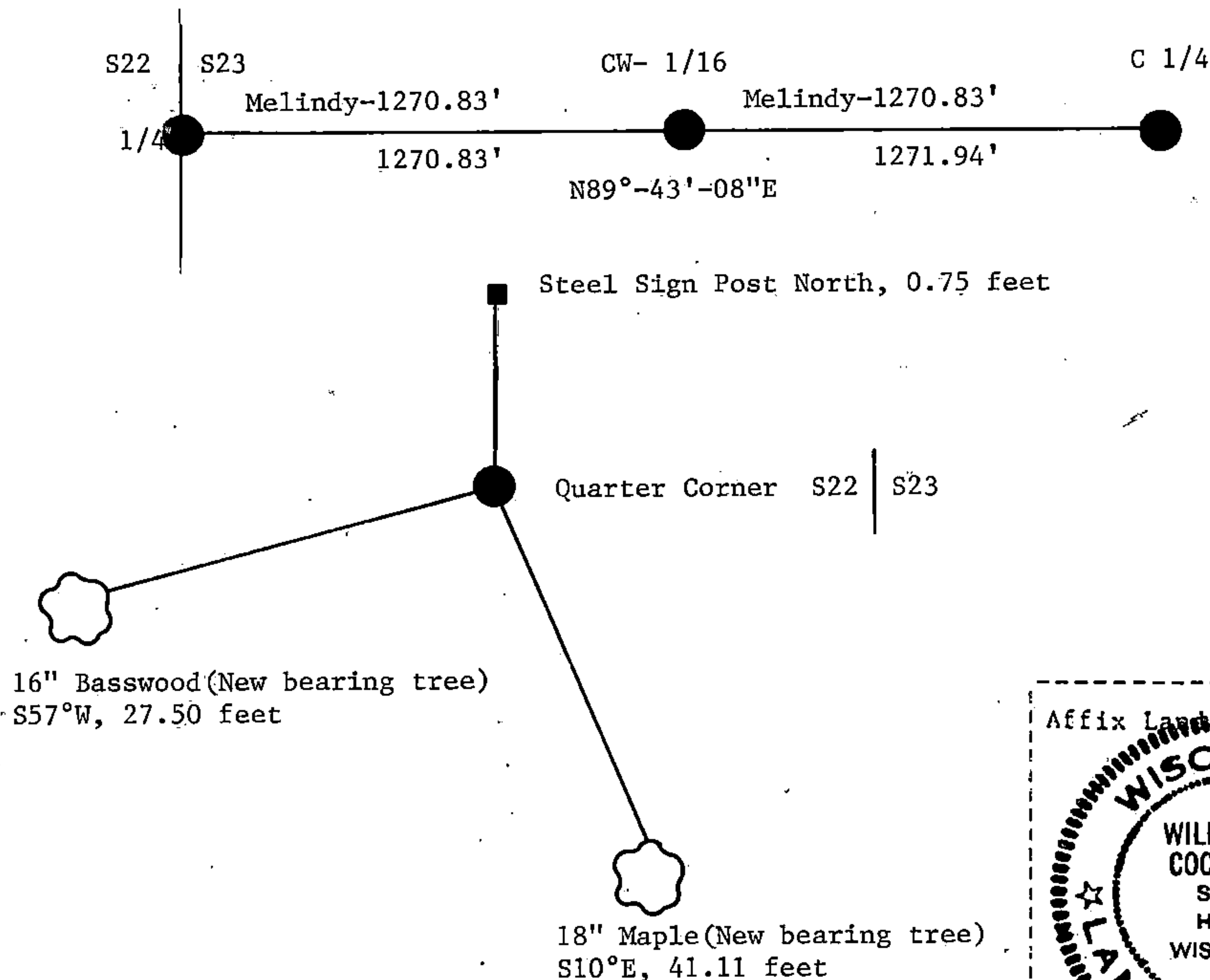
See drawing below.

- (f) Was the corner restored through acceptance of (1) an obliterated evidence location, or, (2) a found perpetuated location?

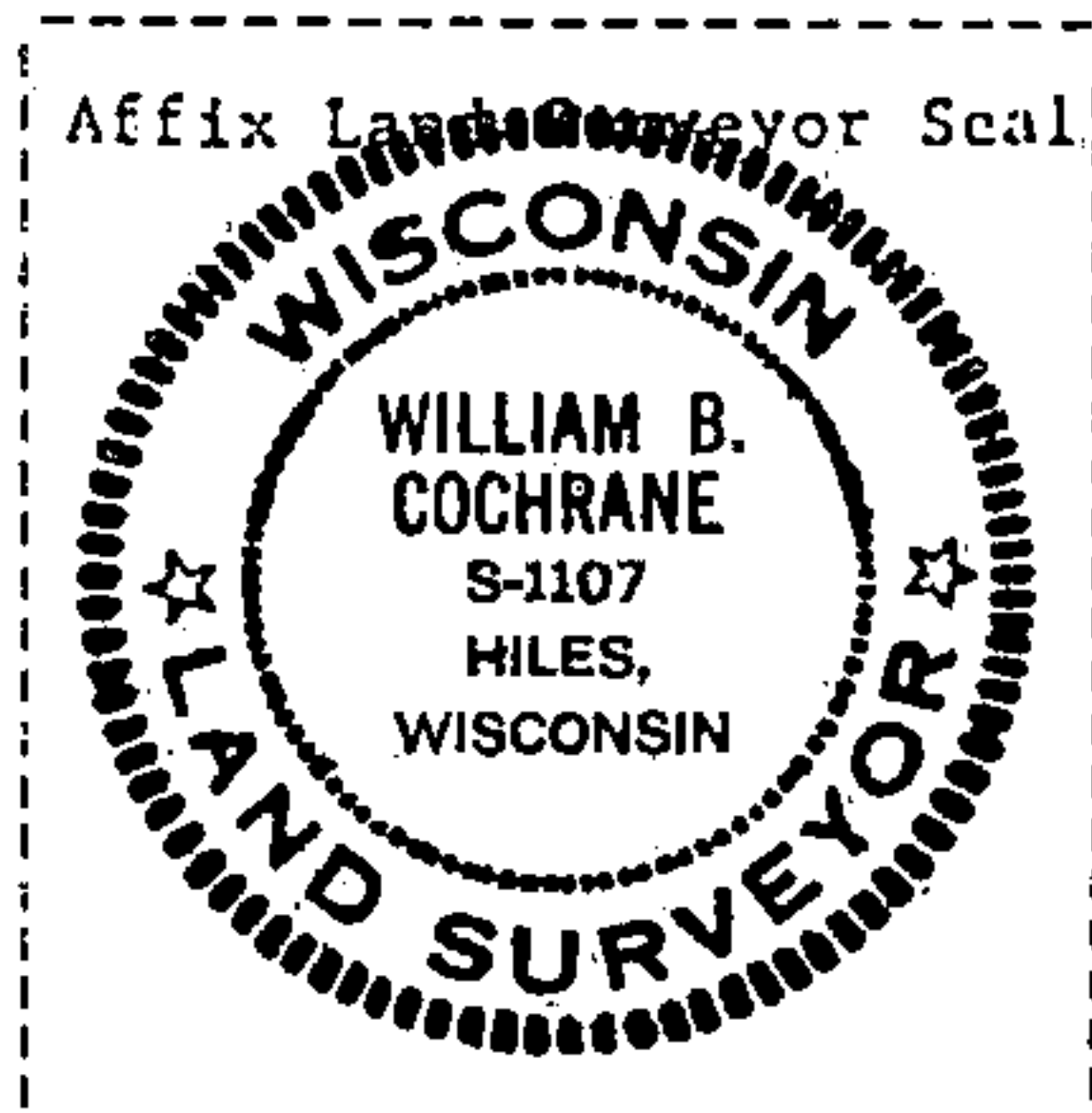
Restored from accepted evidence.

- (g&h). Was the corner reestablished through lost corner proportionate methods? If so, show the method, including the directions and distances to other public land survey corners used as evidence or used for proportioning in determining the corner location?

Lost corner was re-established.



- (i) I, William B. Cochrane
(type or print name) certify that the corner location shown on this record was determined by me or under my direction and control and that this U.S. Public Land Survey Monument Record is correct and complete to the best of my knowledge and belief.



William B. Cochrane February 3, 1987
Signature Date

Survey requested by Edward A. [Signature] 3-9-87

District Ranger

Date