

U.S. PUBLIC LAND SURVEY MONUMENT RECORD

Index No. P-13

State of Wisconsin }
 County of Forest } ss.

I William B. Cochrane, do hereby
 certify that on the 6th day
 of October, 1986, I found
 evidence of the East Quarter
 corner of Section 21
 Township 39, North, Range
14 East, Fourth Principal Meridian,
 as described hereon; and that from this evidence
 I established a new monument and accessories
 as described hereon to perpetuate the original
 location of this corner.

Resident witnesses:

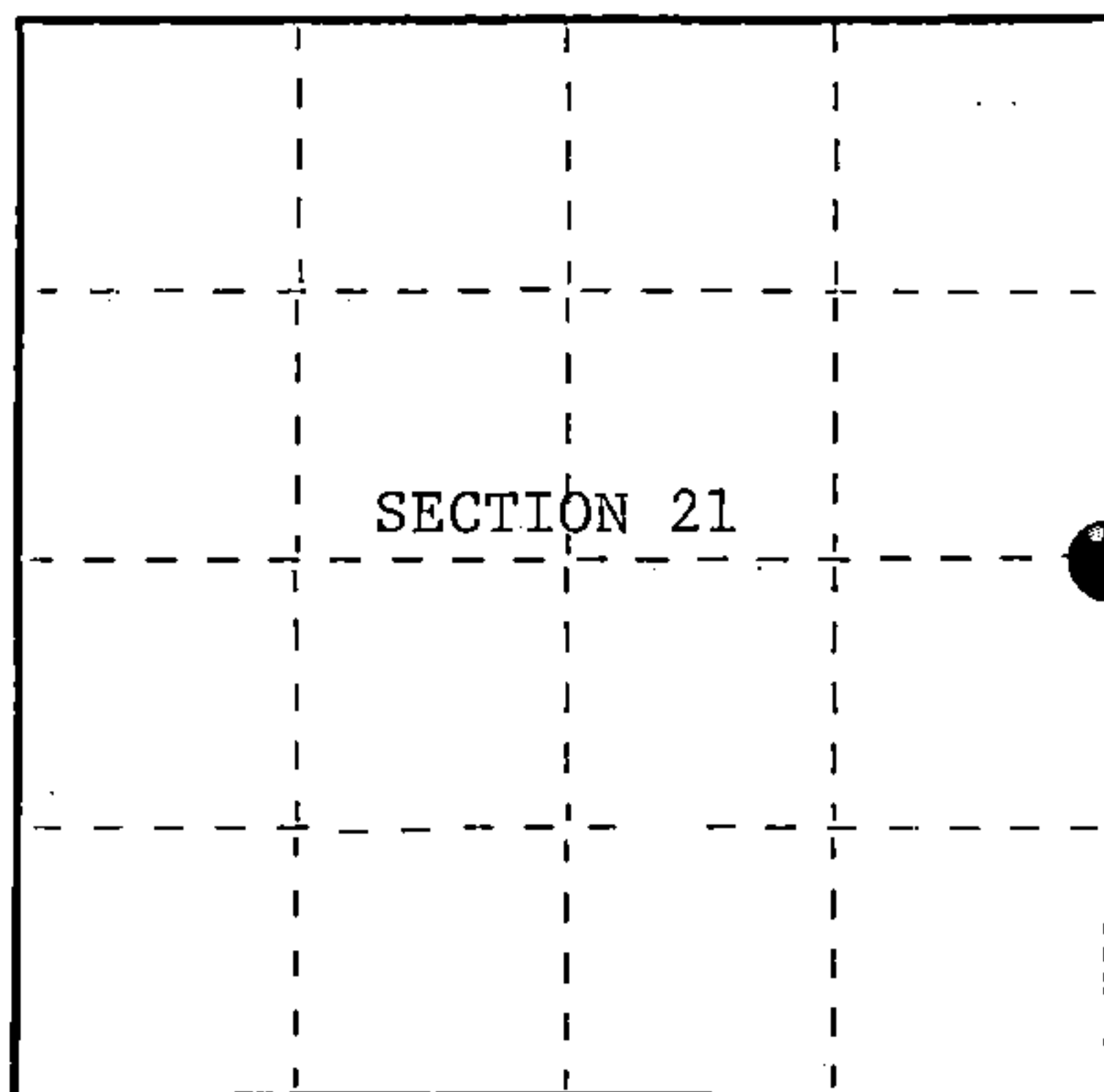
David Brownell

Tony Tillman

State Plane Co-ordinates

N- 250,028.2673

E-2,321,976.8280



○ = Corner monument restored.

History of original corner establishment:

Original Government Survey in 1865 by William E. Daugherty and Alex McDill.
 North between Sections 21 and 22, at 40.00 chains, set Quarter Section Post
 to Sections 21 and 22, from which the following bear;

Birch	8"	S20°E	19 lks.
W. Pine	25"	N24°W	7 lks.
34.00 chains creek			
45.60 chains creek			

Description of corner evidence found:

No corner evidence was recovered.

The corner position was restored using the creek calls to the North and South.

Description of monument and accessories I established to perpetuate the original location of this corner.

At the corner position, set a 2½ inch diameter aluminum pipe monument,
 5 feet long, 4 feet in the ground, with an aluminum cap stamped; T39N, R14E,
 1/4, S21, S22, 1986, S-1107. From which the following bear;

Steel Sign Post	West	1.00 feet
Creek Bank	East	+ 10.00 feet

No bearing trees available.

Dated at Hiles, Wis., this 3rd day of February, 1987.

Signature William B. Cochrane Title Land Surveyor Registration No. S-1107
 (County Surveyor, Registered Land Surveyor, or other duly authorized official)

Office of Register of Deeds, County of Forest, I hereby certify that the within
 instrument was filed in this office for record on the 11th day of March, 1987
 at 3:30 o'clock P. M.

Paul Aschenbrenner
 (Register of Deeds)

By _____ Deputy

FORM NO. 985-A

H.C. Miller Company
 Milwaukee, Wisconsin

Stock No. 26273

DOCUMENT NUMBER 132373

4391421 2000

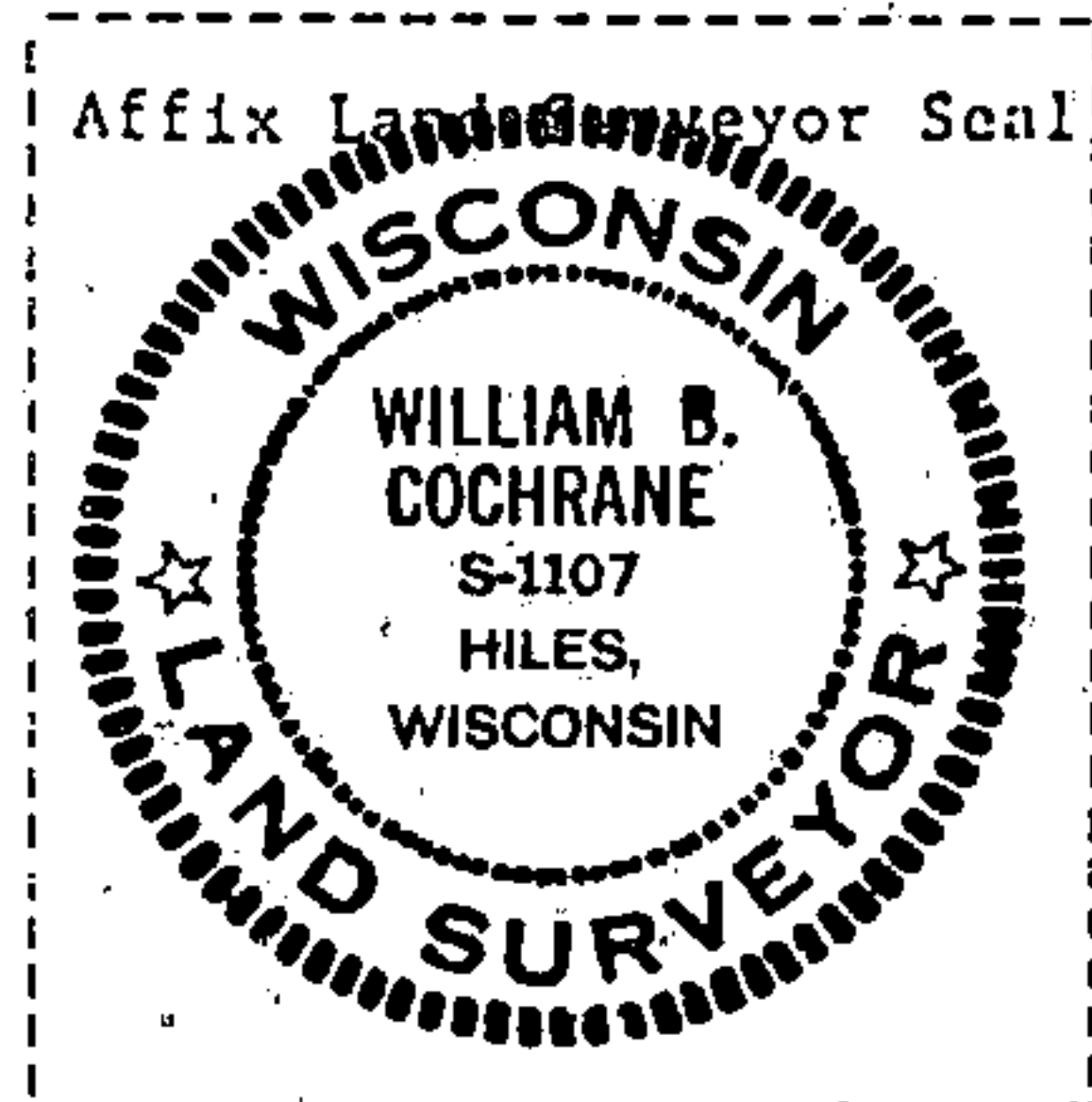
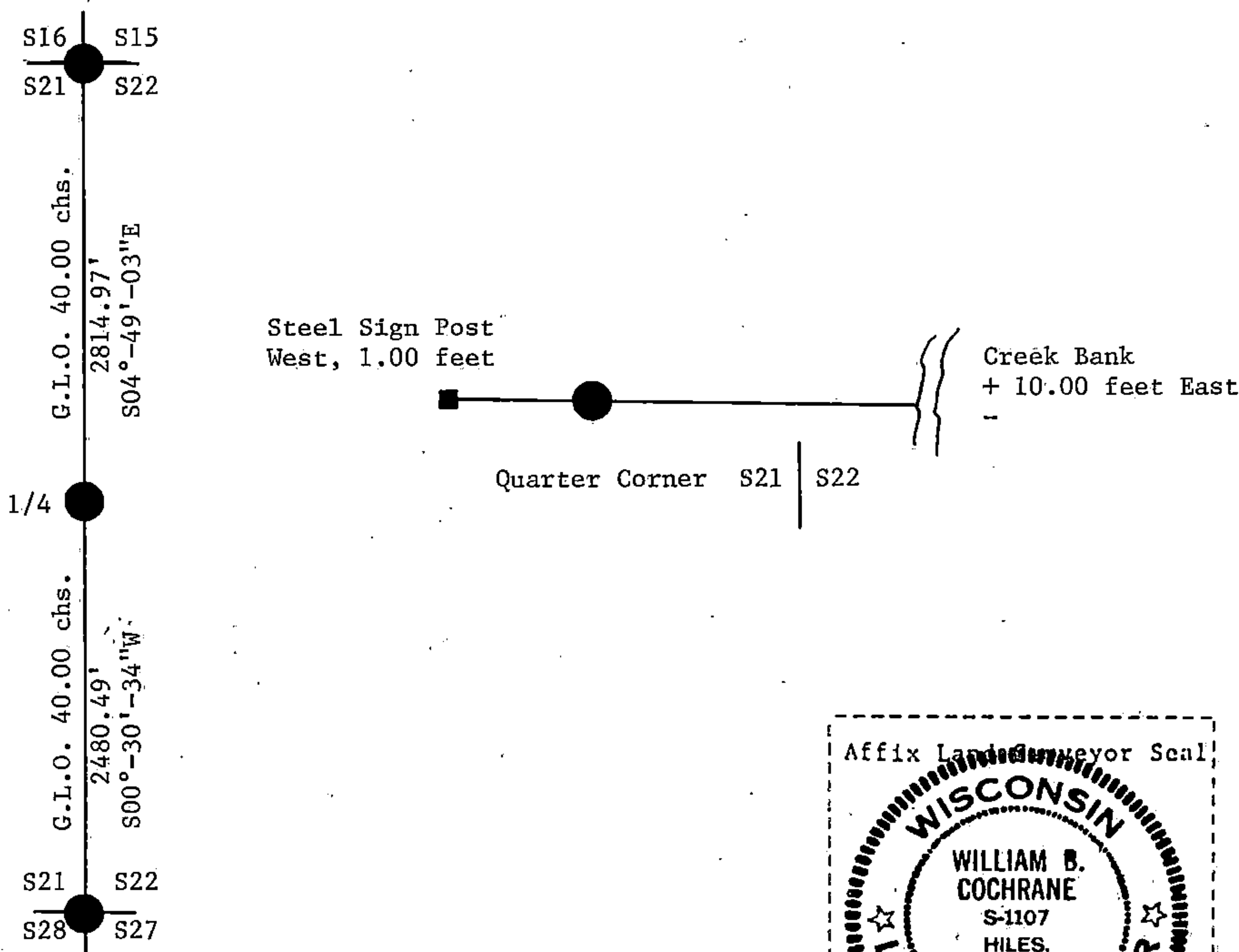
- (e) Describe any material discrepancy between the location of the corner as restored or reestablished and the location of that corner as previously restored or reestablished by distance and direction. Show the discrepancy on the plan view drawing under (d), above. Show the distances between the corner as previously restored or reestablished and (1) the corner as restored or reestablished, and (2) to at least 2 of the witness monuments shown on the drawing in (d), above.

See drawing below.

- (f) Was the corner restored through acceptance of (1) an obliterated evidence location, or, (2) a found perpetuated location?

Restored from original evidence.

- (g&h) Was the corner reestablished through lost corner proportionate methods? If so, show the method, including the directions and distances to other public land survey corners used as evidence or used for proportioning in determining the corner location?



- (i) William B. Cochrane
(type or print name) certify that the corner location shown on this record was determined by me or under my direction and control and that this U.S. Public Land Survey Monument Record is correct and complete to the best of my knowledge and belief.

William B. Cochrane February 3, 1987
Signature Date

Survey requested by; Edward G. Gage 3-9-87
District Ranger Date