

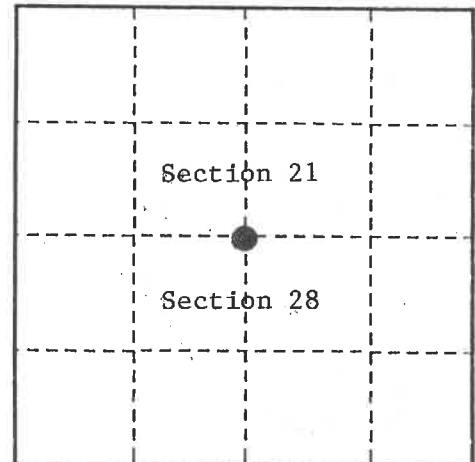
U. S. PUBLIC LAND SURVEY MONUMENT RECORD

INSTRUCTIONS:

This record shall show the location of the corner and shall include all of the following nine elements (a through i).

- (a) Identify the corner by reference to the U.S. public land survey system.
 O = Corner monument restored.

Quarter Corner common to Sections 21 and 28
 T39N, R14E, Forest County, Wisconsin



- (b) Describe any record evidence, monument evidence, occupational evidence, testimonial evidence or any other material evidence you considered, and whether the monument was found or placed.

Original Government Survey in 1865 by William E. Daugherty and Alex McDill.

In 1961 George Kapitz, Land Surveyor, restored the corner position from original bearing tree evidence and a cedar post. In place of post, set a 2" diameter galvanized iron pipe, 5 feet long, 1½ feet in the ground, with a brass cap stamped; T39N, R14E, 1/4, S21, S28, 1961, S670. From which the following bear;

White Spruce	9"	S55°E	42.10 feet
White Spruce	9"	S21°W	18.80 feet
White Spruce	11"	N36°W	54.60 feet
4"x4"x48" Wood Sign Post	SE		3.50 feet

In 1985, William B. Cochrane, Land Surveyor with the U.S. Forest Service, found the above described monument and the following bearing trees;

White Spruce(stump)	S55°E	42.10 feet
White Spruce(blowdown)	S21°W	18.80 feet
White Spruce 13"	N36°W	54.60 feet
4"x4"x48" Wood Post	Southeast	3.50 feet

Cochrane blazed and scribed a new bearing tree;

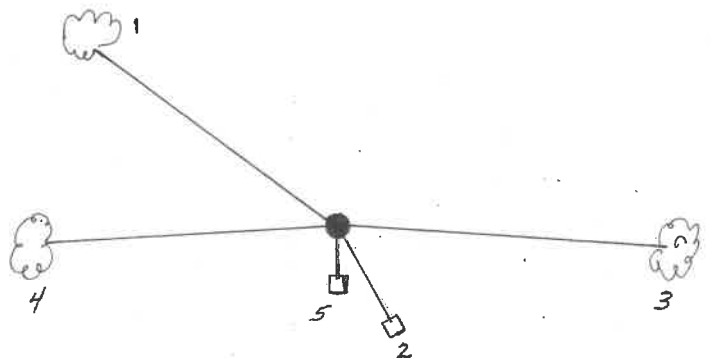
White Pine	10"	N86°E	84.72 feet
------------	-----	-------	------------

On 9-25-99, Gary L. Pisoni, RLS, found the above described monument and corner accessories, and blazed and scribed new bearing trees as described below.
 See previous Land Corner Certificate dated 3-11-87, Document # 132379.

- (c) In the plan view drawing below, provide reference ties to at least 4 witness monuments, or, if the location is within a municipality, to at least 2 witness monuments. (witness monuments shall be made of concrete, natural stone, iron or other equally durable material.)

- (d) Show a plan view drawing depicting the relevant monuments and reference ties which is sufficient in detail to enable accurate relocation of the corner monument if the corner monument is disturbed. Indicate north.

1. White Spruce, 16", N36°W, 54.60 feet
2. Wood Sign Post, Southeast, 3.50 feet
3. Popple, 7", S71°E, 20.01 feet(NBT)
4. Popple, 6", S75°W, 14.49 feet(NBT)
5. Steel Sign Post, South, 1.00 feet



REGISTER'S OFFICE
 Forest County, Wis.
 Received for record this 27th day
 of October A.D., 1999 at
10:05 o'clock A.M. and recorded
 in Vol. Corner Restoration
 page R-11
Kay Swanson, Deputy
 Register of Deeds

R-11

43914210020

R-11

(e) Describe any material discrepancy between the location of the corner as restored or reestablished and the location of that corner as previously restored or reestablished by distance and direction. Show the discrepancy on the plan view drawing under (d), above. Show the distances between the corner as previously restored or reestablished and (1) the corner as restored or reestablished, and (2) to at least 2 of the witness monuments shown on the drawing in (d), above.

None

(f) Was the corner restored through acceptance of (1) an obliterated evidence location, or, (2) a found perpetuated location?

A found perpetuated location.

(g & h) Was the corner reestablished through lost corner proportionate methods? If so, show the method, including the directions and distances to other public land survey corners used as evidence or used for proportioning in determining the corner location?

(1) I, Gary L. Pisoni

(type or print name) certify that the corner location shown on this record was determined by me or under my direction and control and that this U.S. Public Land Survey Monument Record is correct and complete to the best of my knowledge and belief.

Gary L. Pisoni

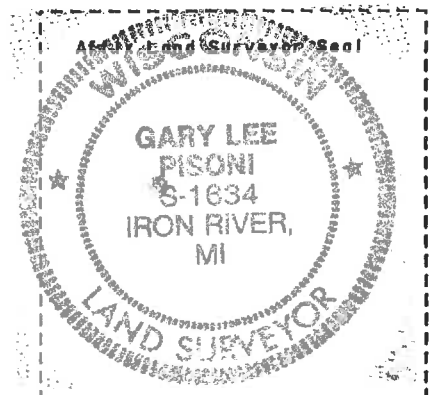
10-2-99

Signature

Date

CERTIFICATE READY FOR FILING:

E. B. Tipton
District Ranger



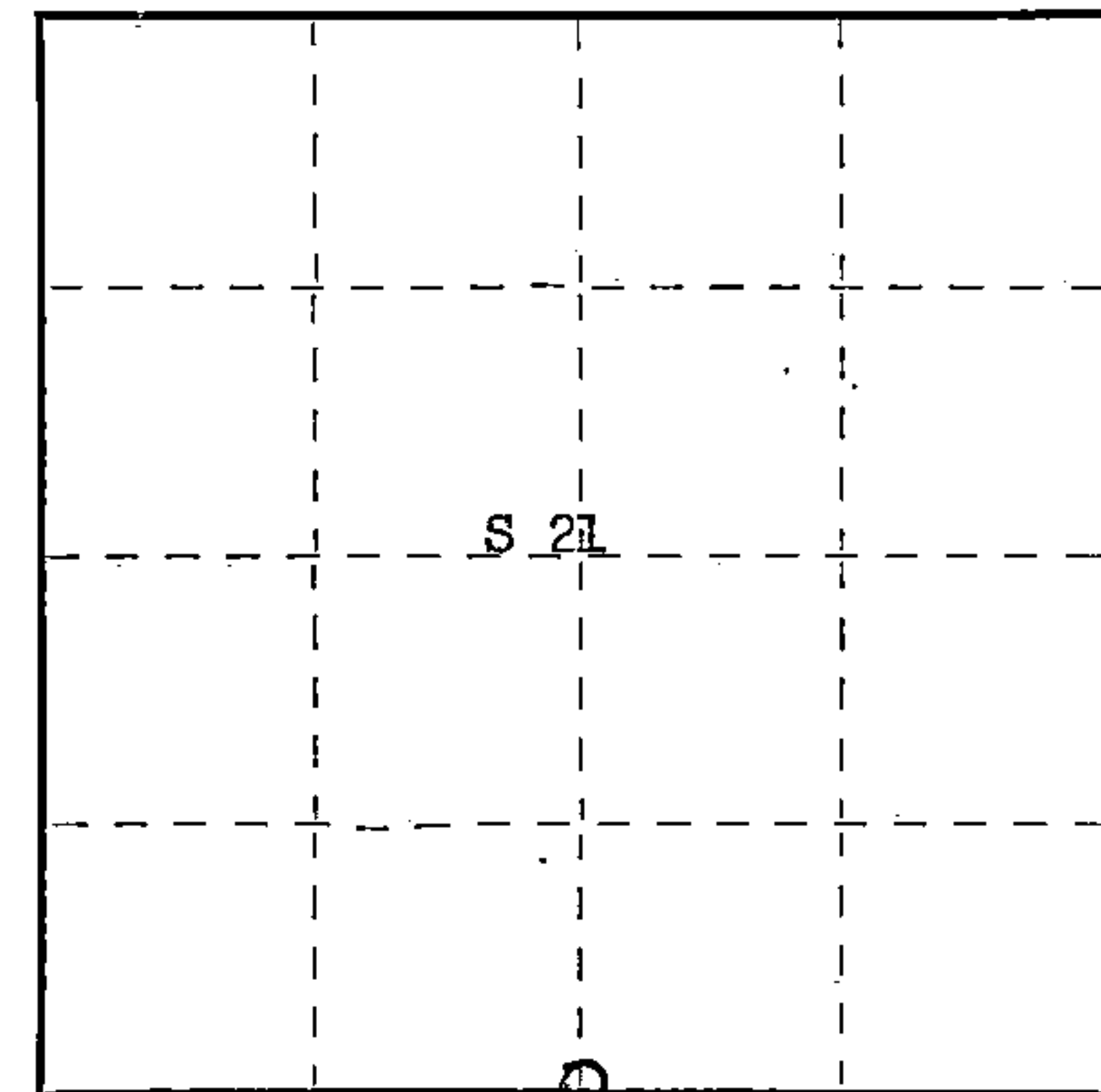
CERTIFIED LAND CORNER RESTORATION

Index No. **851**
R11

State of Wisconsin }
County of Forest } ss.

I, George V. Kapitz, do hereby
certify that on the 16 day
of June, 1961, I found
evidence of the 1/4
corner of 21-28
Township 39, North, Range
11 East, Fourth Principal Meridian,
as described hereon; and that from this evidence
I established a new monument and accessories
as described hereon to perpetuate the original
location of this corner.

Resident witnesses:



○ = Corner monument restored.

History of original corner establishment:

40.23 - set 1/4 section post

Birch 7" N 61° W 3 lks.
Y. Pine 20" S 33° W 22 lks.

Description of corner evidence found: 4" x 4" x 26" balsam post from old survey rotted off on
ground scribed

4" x 4" x 62" cedar post standing in place

Original BT 30" pine stump scribed

Description of monument and accessories I established to perpetuate the original location of this corner.
2" I.D. galvanized iron pipe filled with concrete 5' long 18" above ground capped
with brass tablet stamped to read:

4" x 4" x 48" wood post; blazed and scribed the following bearing trees:

1. W. spruce 9" S 55° E 42.1 ft.
2. W. spruce 9" S 21° W 18.8 ft.
3. W. spruce 11" N 36° W 54.6 ft.
4. W. pine stump 30" S 27° W 14.5 ft.

T39N R11E
S21
1/4
S28
1961 S-670

Dated at Crandon, Wis., this 24th day of January, 1962

Signature George V. Kapitz Title Land Surveyor Registration No. S-670
(County Surveyor, Registered Land Surveyor, or other duly authorized official)

Office of Register of Deeds, County of Forest, I hereby certify that the within
instrument was filed in this office for record on the 24th day of January, 1962
at 9 o'clock A. M.

Anna Peterson
(Register of Deeds)

DOCUMENT NO. 85684

By _____ Deputy

U.S. PUBLIC LAND SURVEY MONUMENT RECORD

Index No. R-11

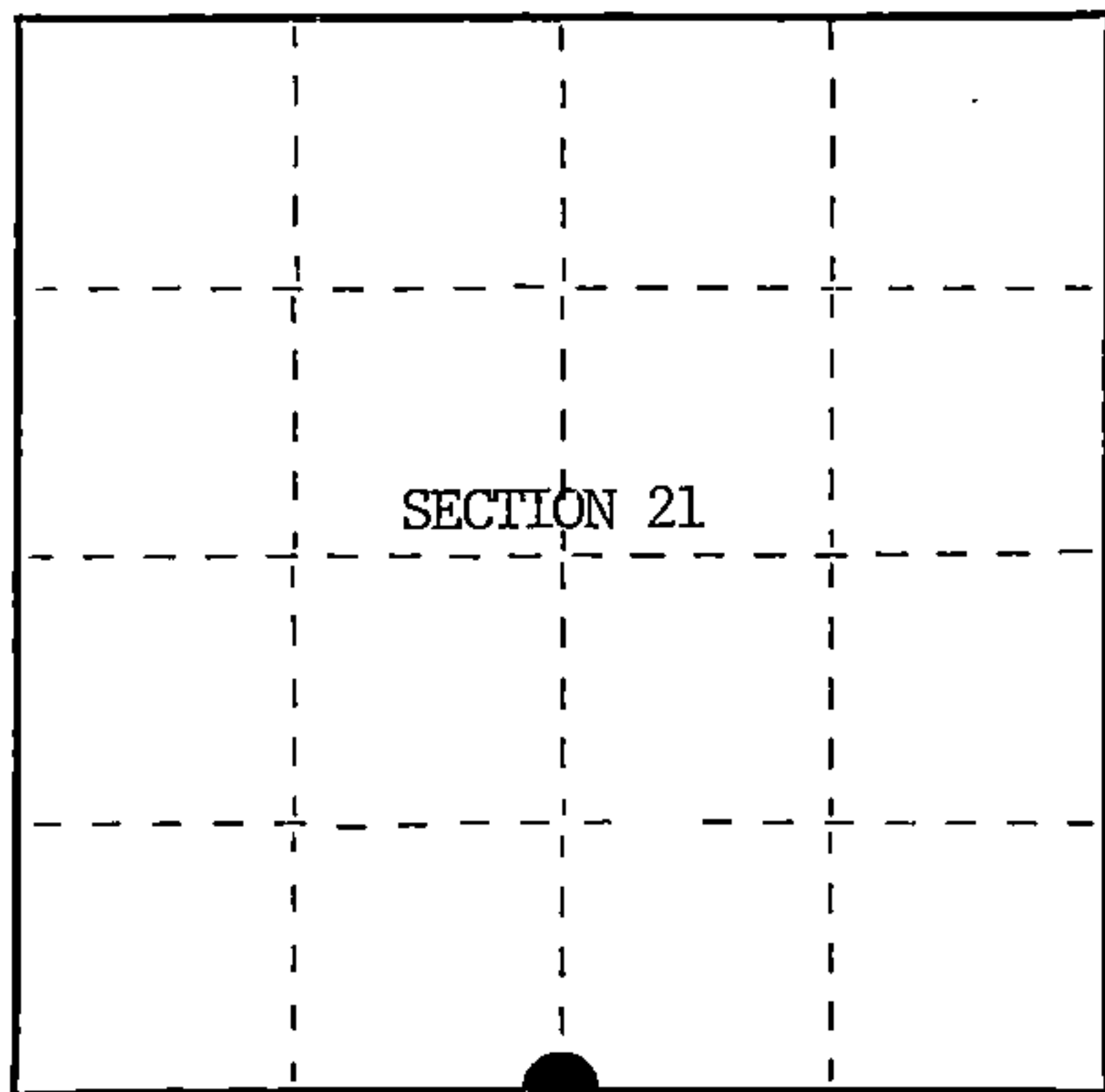
State of Wisconsin }
County of Forest } ss.

I, William B. Cochran, do hereby certify that on the 18th day of July, 1985, I found evidence of the South Quarter corner of Section 21 Township 39 North, Range 14 East, Fourth Principal Meridian, as described hereon; and that from this evidence I established a new monument and accessories as described hereon to perpetuate the original location of this corner.

Resident witnesses:

David Brownell

State Plane Co-ordinates
N- 247,527.3890
E-2,319,361.1380



○ = Corner monument restored.

History of original corner establishment:

Original Government Survey in 1865 by William E. Daugherty and Alex McDill. On June 16th, 1961, George Kapitz, a Registered Land Surveyor, found a 4"x4"x62" Cedar post and an original 30" Yellow Pine stump (scribed). In place of wood post set a 2" I.D. galvanized iron pipe, 5 feet long, 1½ feet in the ground, with a brass cap stamped; T39N, R14E, 1/4, S21, S28, 1961, S-670. From which the following bear;

White Spruce	9"	S55°E	42.10 feet
White Spruce	9"	S21°W	18.80 feet
White Spruce	11"	N36°W	54.60 feet

Description of corner evidence found: 4"x4"x48" Wood Sign Post
Found monument as described and in place, from which the following bear;

White Spruce(stump)	S55°E	42.10 feet
White Spruce(blow down)	S21°W	18.80 feet
White Spruce	13"	N36°W
4"x4"x48" Wood Sign Post	SE	3.50 feet

Description of monument and accessories I established to perpetuate the original location of this corner.

Blazed and scribed a new bearing tree;

White Pine	10"	N86°E	84.72 feet
------------	-----	-------	------------

Dated at Hiles, Wis., this 16th day of January, 1986

Signature: William B. Cochran Title: Land Surveyor Registration No. S-1107
(County Surveyor, Registered Land Surveyor, or other duly authorized official)

Office of Register of Deeds, County of Forest, I hereby certify that the within instrument was filed in this office for record on the 11th day of March, 1987 at 3:30 o'clock P. M.

Paul Aschenbrenner
(Register of Deeds)

By Deputy

43914210020

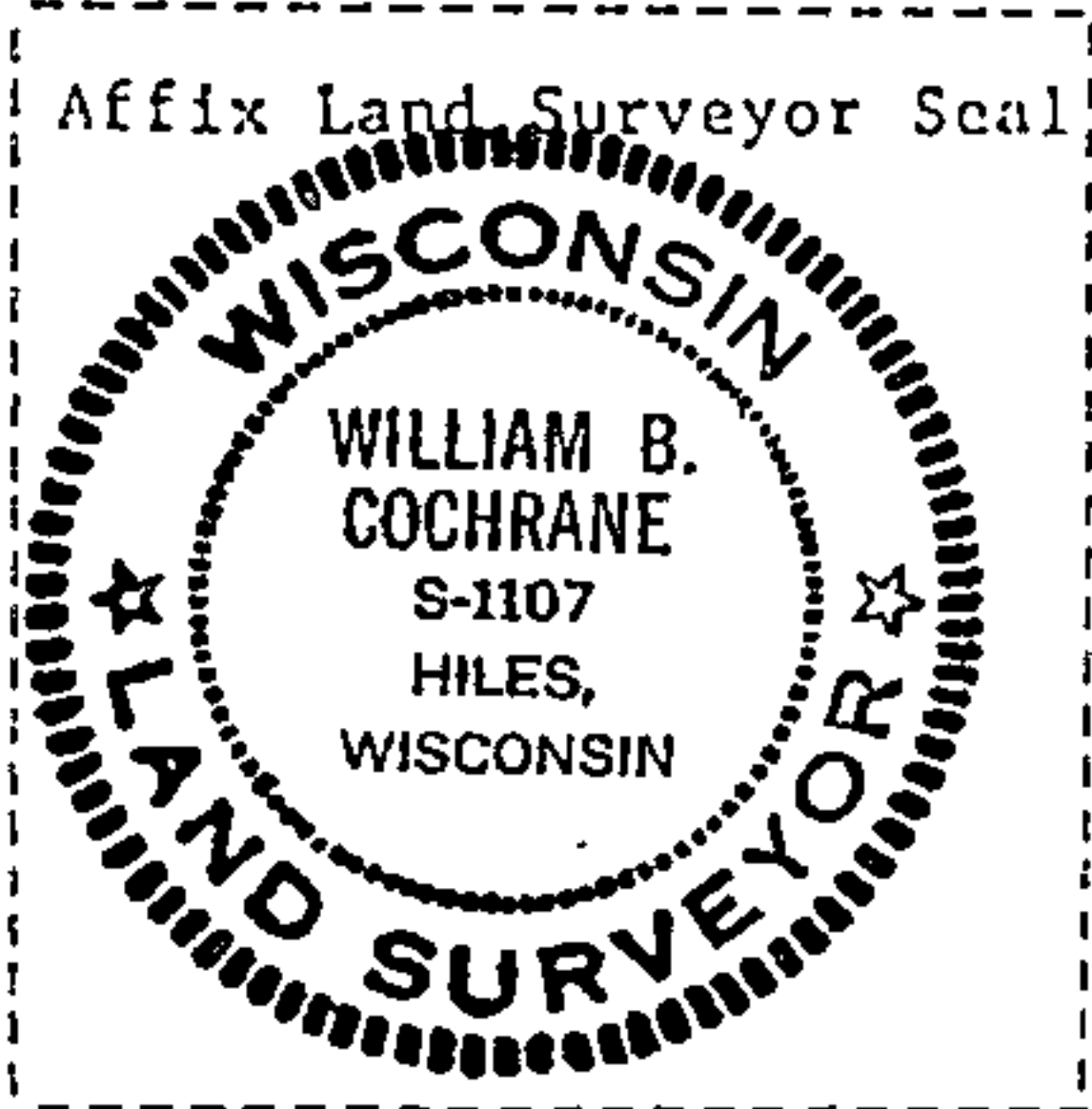
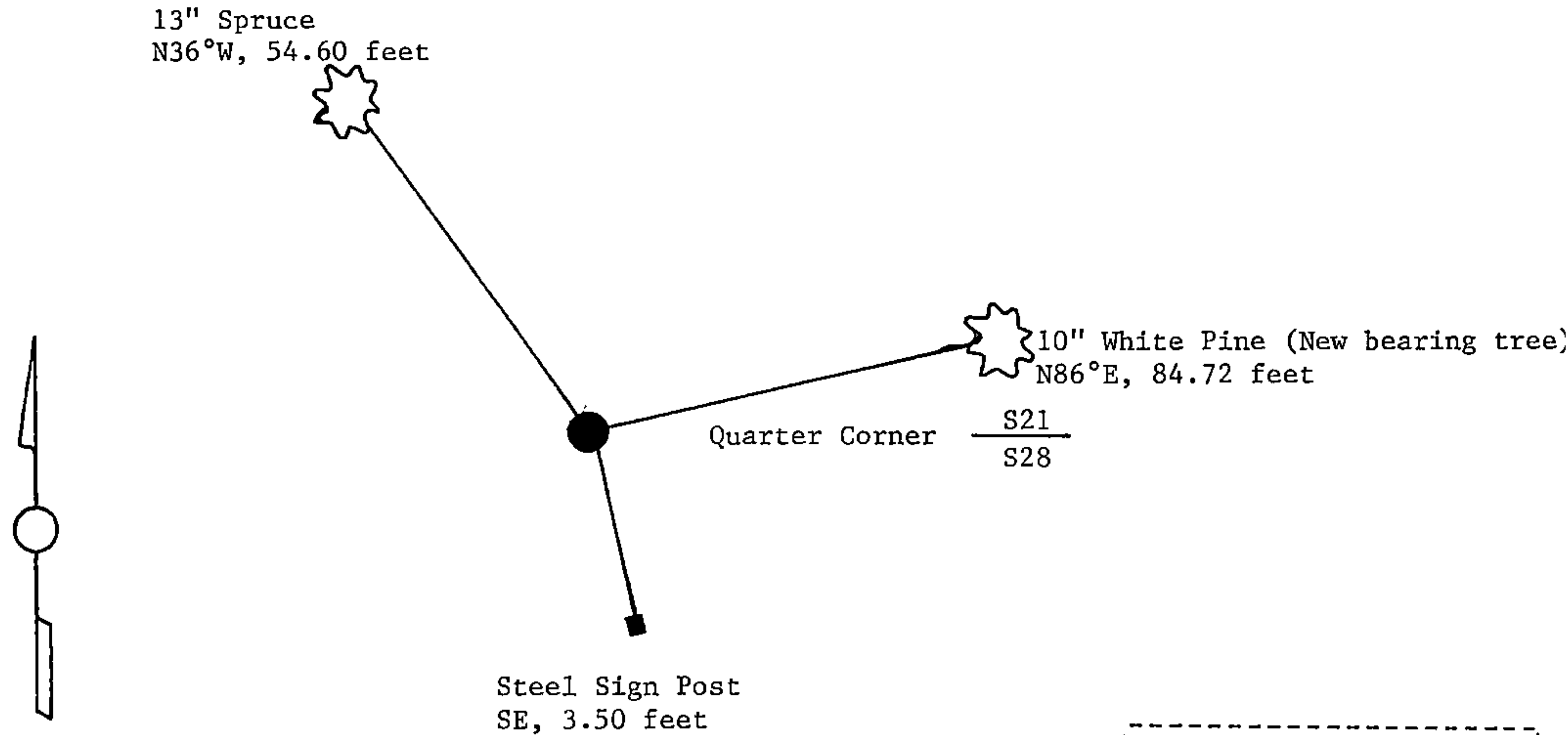
(e) Describe any material discrepancy between the location of the corner as restored or reestablished and the location of that corner as previously restored or reestablished by distance and direction. Show the discrepancy on the plan view drawing under (d), above. Show the distances between the corner as previously restored or reestablished and (1) the corner as restored or reestablished, and (2) to at least 2 of the witness monuments shown on the drawing in (d), above.

See drawing below.

(f) Was the corner restored through acceptance of (1) an obliterated evidence location, or, (2) a found perpetuated location?

Restored through acceptance of a found perpetuated location.

(g&h) Was the corner reestablished through lost corner proportionate methods? If so, show the method, including the directions and distances to other public land survey corners used as evidence or used for proportioning in determining the corner location?



(i) I, William B. Cochrane
(type or print name) certify that the corner location shown on this record was determined by me or under my direction and control and that this U.S. Public Land Survey Monument Record is correct and complete to the best of my knowledge and belief.

William B. Cochrane October 7, 1986
Signature Date

Survey requested by: Edward [Signature] 3-9-87
District Ranger Date