

U.S. PUBLIC LAND SURVEY MONUMENT RECORD

Index No. R-9

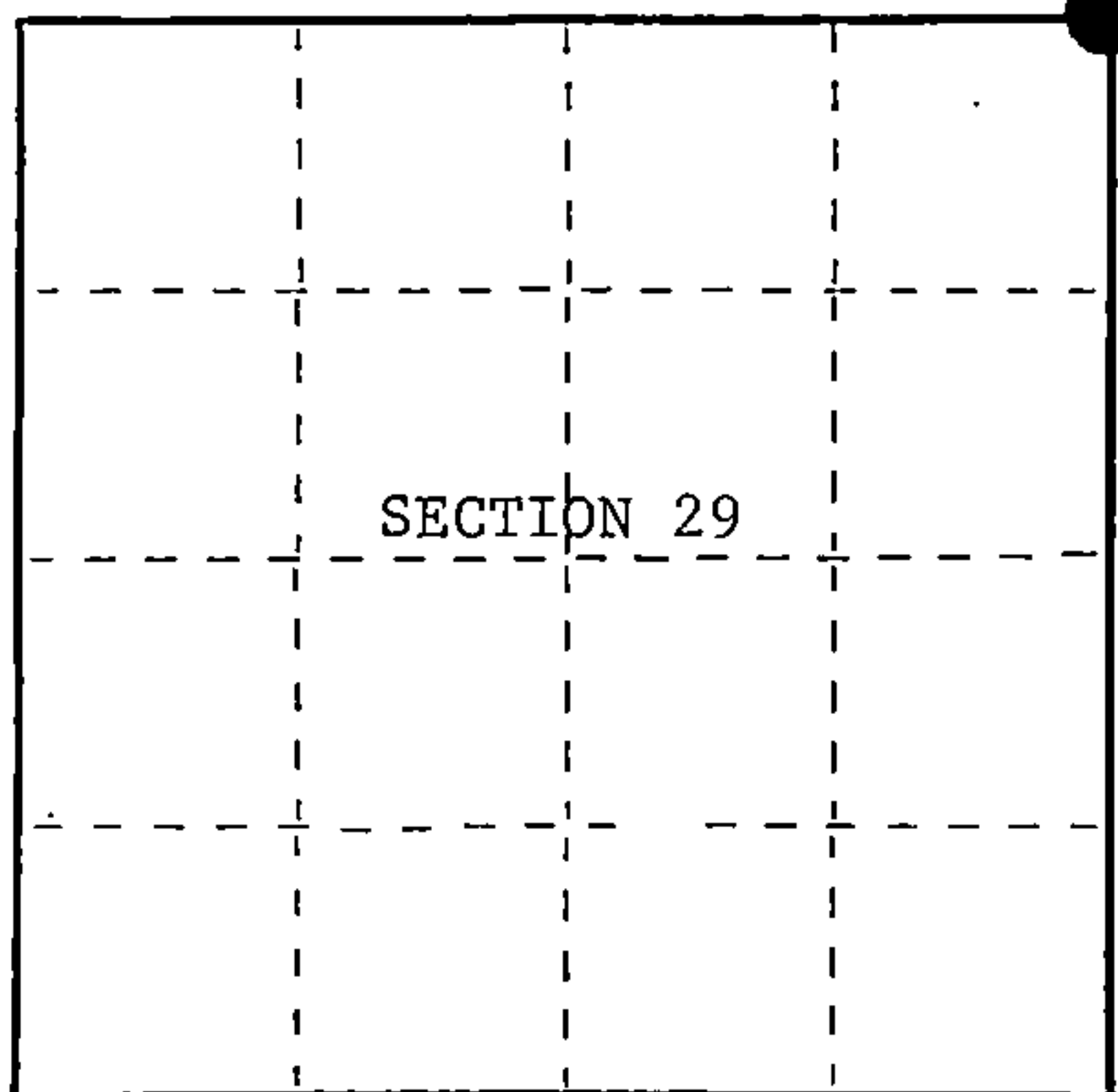
State of Wisconsin }  
 County of Forest } ss.

I, William B. Cochrane, do hereby certify that on the 12th day of June, 1986, I found evidence of the Northeast Section corner of Section 29 Township 39 North, Range 14 East, Fourth Principal Meridian, as described hereon; and that from this evidence I established a new monument and accessories as described hereon to perpetuate the original location of this corner.

Resident witnesses:

David Brownell

State Plane Co-ordinates  
 N- 247,386.3410  
 E-2,316,725.7450



○ = Corner monument restored.

History of original corner establishment:

Original Government Survey in 1865 by William E. Daugherty and Alex McDill. North between Sections 28 and 29, at 80 chains set Section Corner post. In 1917, Melindy, a Local Surveyor surveyed the line from the North Quarter of Section 29 to the Northeast Section Corner. At the Section Corner he replaced the original wood post and made the following new bearing trees;

Birch	16"	S 8°45'W	51
Hemlock	12"	N52°30'E	50

Description of corner evidence found:

No corner evidence was recovered.

The corner position was restored using the bearing between the Wood post at the North 1/4 of Section 29 and the Wood Post at the E 1/16 between Sections 20 and 29. The corner position was restored at the distance recored on the Melindy Survey from the North 1/4 to the Northeast Section Corner of Section 29!

Description of monument and accessories I established to perpetuate the original location of this corner.

At the corner position, set a 2½ inch diameter aluminum pipe monument, 3 feet long, 2½ feet in the ground, with an aluminum cap stamped; T39N, R14E, S20, S21, S28, S29, 1986, S-1107. From which the following new blazed and scribed bearing trees bear;

Aspen	13"	N72°E	36.17 feet
Aspen	12"	S29°E	38.41 feet
Spruce	16"	S60°W	71.82 feet
W. Birch	14"	N23°W	10.97 feet
Steel Sign Post		South	1.50 feet

Dated at Hiles, Wis., this 3rd day of February, 1987

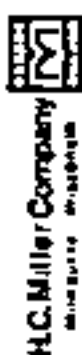
Signature *William B. Cochrane* Title Land Surveyor Registration No. S-1107  
 (County Surveyor, Registered Land Surveyor, or other duly authorized official)

Office of Register of Deeds, County of Forest, I hereby certify that the within instrument was filed in this office for record on the 11th day of March, 1987 at 3:30 o'clock P. M.

*Paul Achenbrenner*  
 (Register of Deeds)

By \_\_\_\_\_ Deputy

FORM NO. 985-A



Stock No. 26273

DOCUMENT NUMBER 132378

43914200000

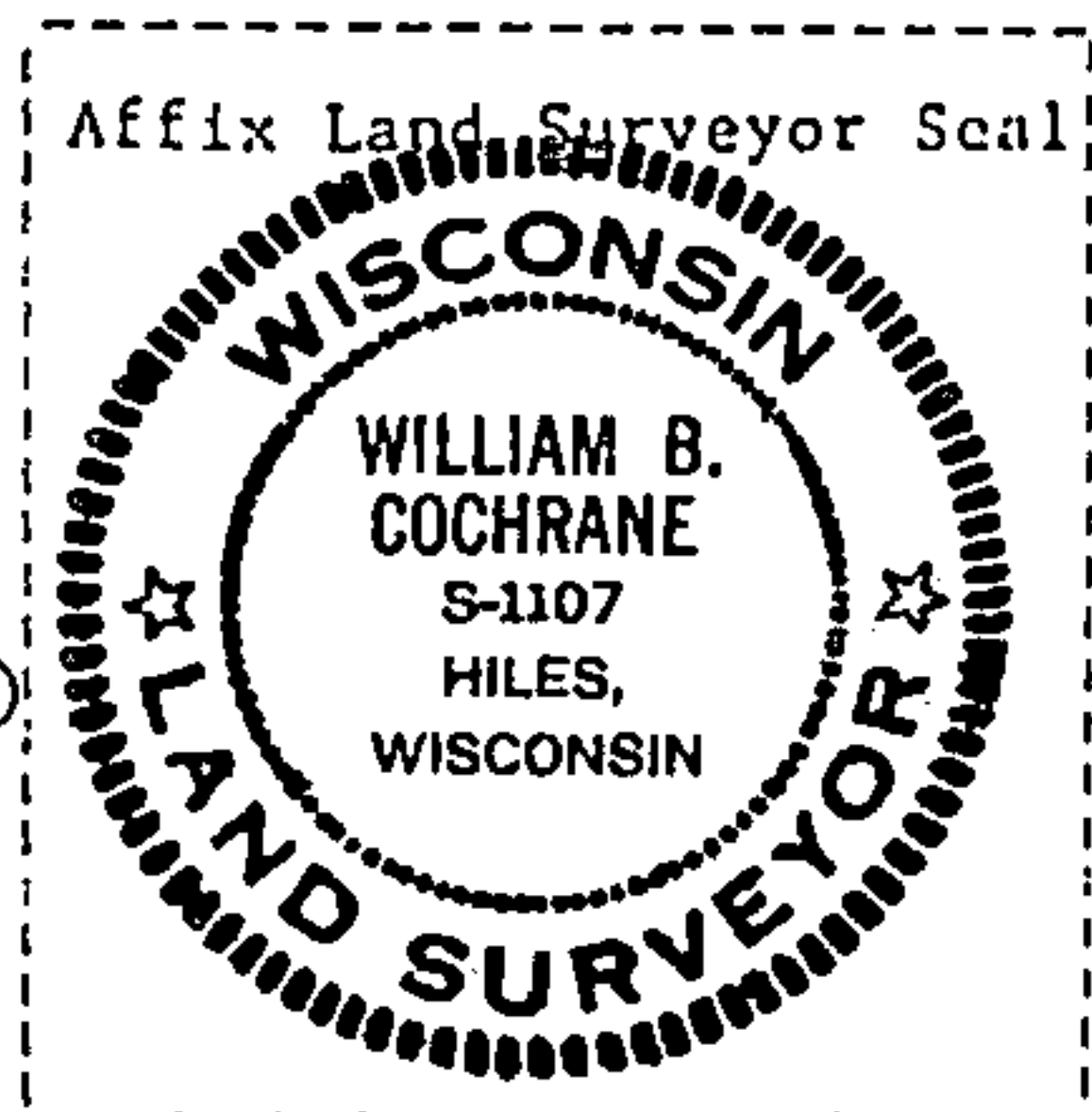
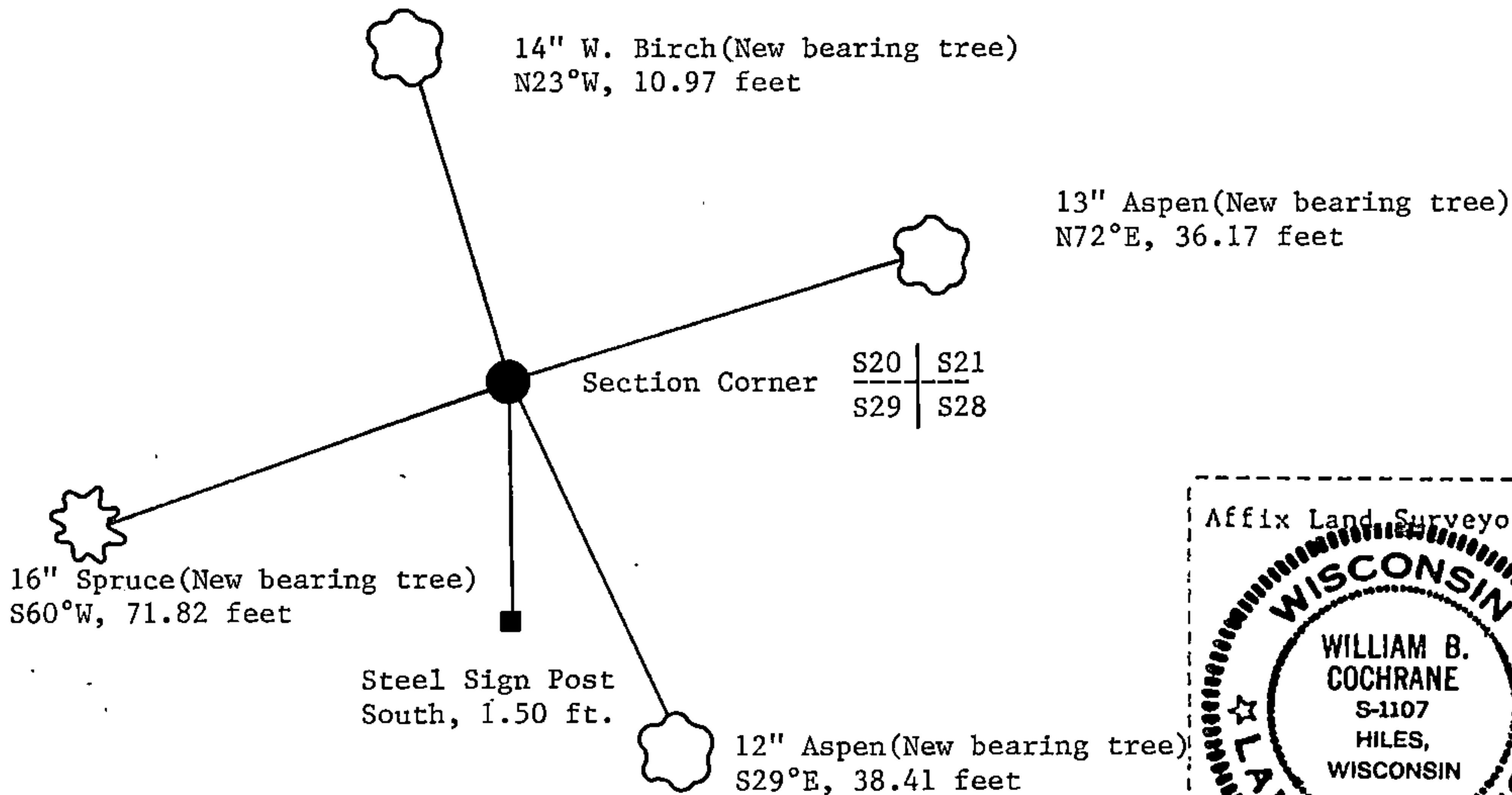
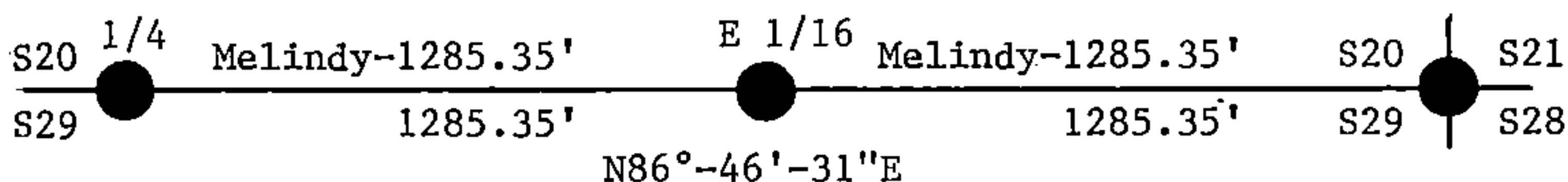
(e) Describe any material discrepancy between the location of the corner as restored or reestablished and the location of that corner as previously restored or reestablished by distance and direction. Show the discrepancy on the plan view drawing under (d), above. Show the distances between the corner as previously restored or reestablished and (1) the corner as restored or reestablished, and (2) to at least 2 of the witness monuments shown on the drawing in (d), above.

See drawing below.

(f) Was the corner restored through acceptance of (1) an obliterated evidence location, or, (2) a found perpetuated location?

Restored from accepted evidence.

(g&h) Was the corner reestablished through lost corner proportionate methods? If so, show the method, including the directions and distances to other public land survey corners used as evidence or used for proportioning in determining the corner location?



(i) I, William B. Cochrane  
 (type or print name) certify that the corner location shown on this record was determined by me or under my direction and control and that this U.S. Public Land Survey Monument Record is correct and complete to the best of my knowledge and belief.

William B. Cochrane February 3, 1987  
 Signature Date

Survey requested by: Edward [Signature] 3-9-87  
 District Ranger Date

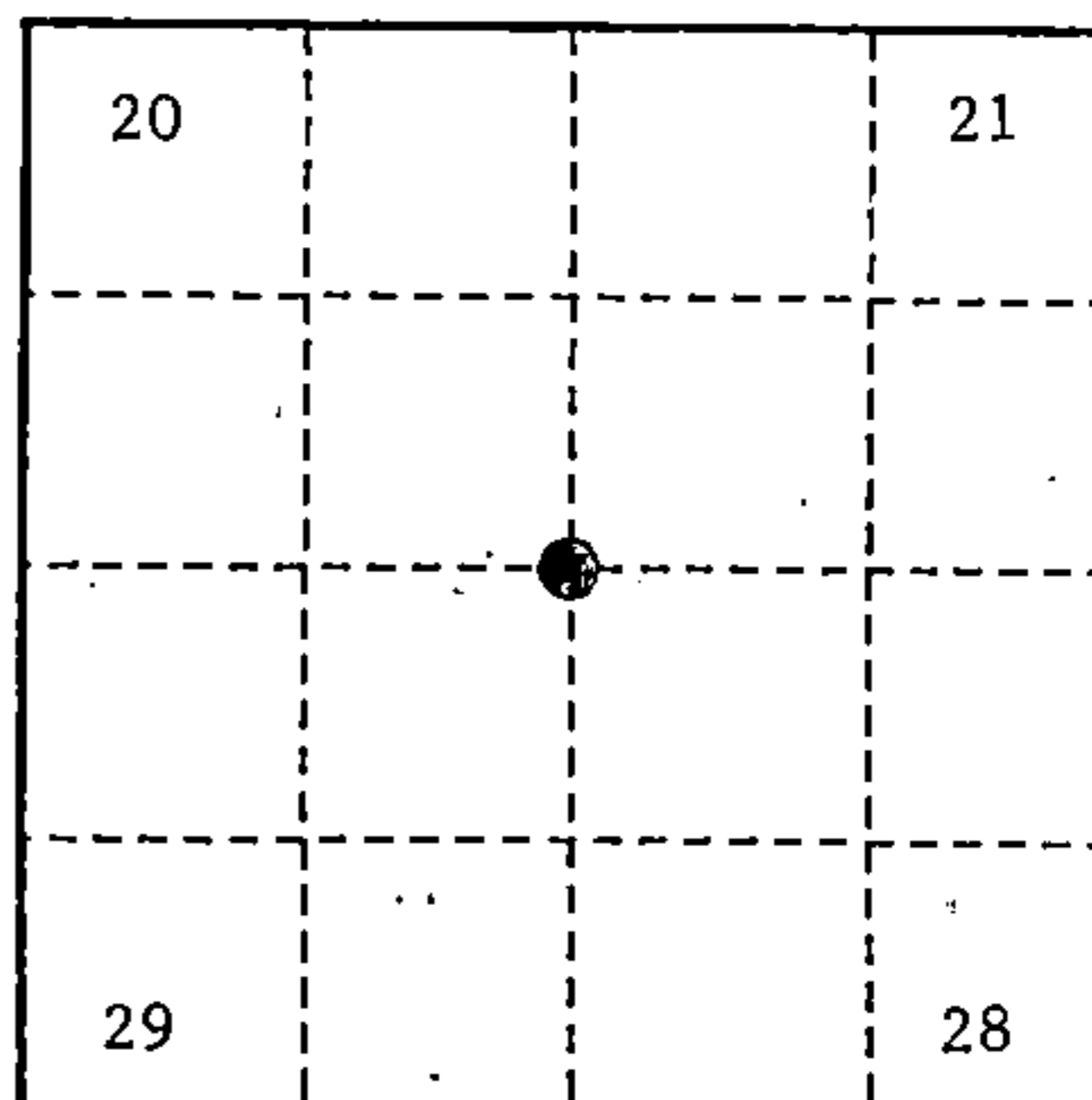
U. S. PUBLIC LAND SURVEY MONUMENT RECORD

INSTRUCTIONS:

This record shall show the location of the corner and shall include all of the following nine elements (a through i).

- (a) Identify the corner by reference to the U.S. public land survey system.  
 O = Corner monument restored.

Section Corner to Sections 20, 21, 28 and 29, T39N, R14E, Forest County, Wisconsin



- (b) Describe any record evidence, monument evidence, occupational evidence, testimonial evidence or any other material evidence you considered, and whether the monument was found or placed.

Original Government Survey in 1865 by William E. Daugherty and Alex. McDill.

In 1986, William B. Cochran, Land Surveyor with the Forest Service restored the corner position using the bearing between the wood post at the North Quarter Corner of Section 29 and the wood post at the East Sixteenth Corner between Sections 20 and 29 and the record distance from the North Quarter Corner of Section 29. Record bearing and distance are from George Melindy's survey of Section Line. At the corner position, set a 2½ inch diameter aluminum pipe monument, 3 feet long, 2½ feet in the ground, with an aluminum cap stamped; T39N, R14E, S20, S21, S28, S29, 1986, S-1107. Blazed and scribed the following;

Aspen	13"	N72°E	36.17 feet
Aspen	12"	S29°E	38.41 feet
Spruce	16"	S60°W	71.82 feet
White Birch	14"	N23°W	10.97 feet
Steel Sign Post		South	1.50 feet

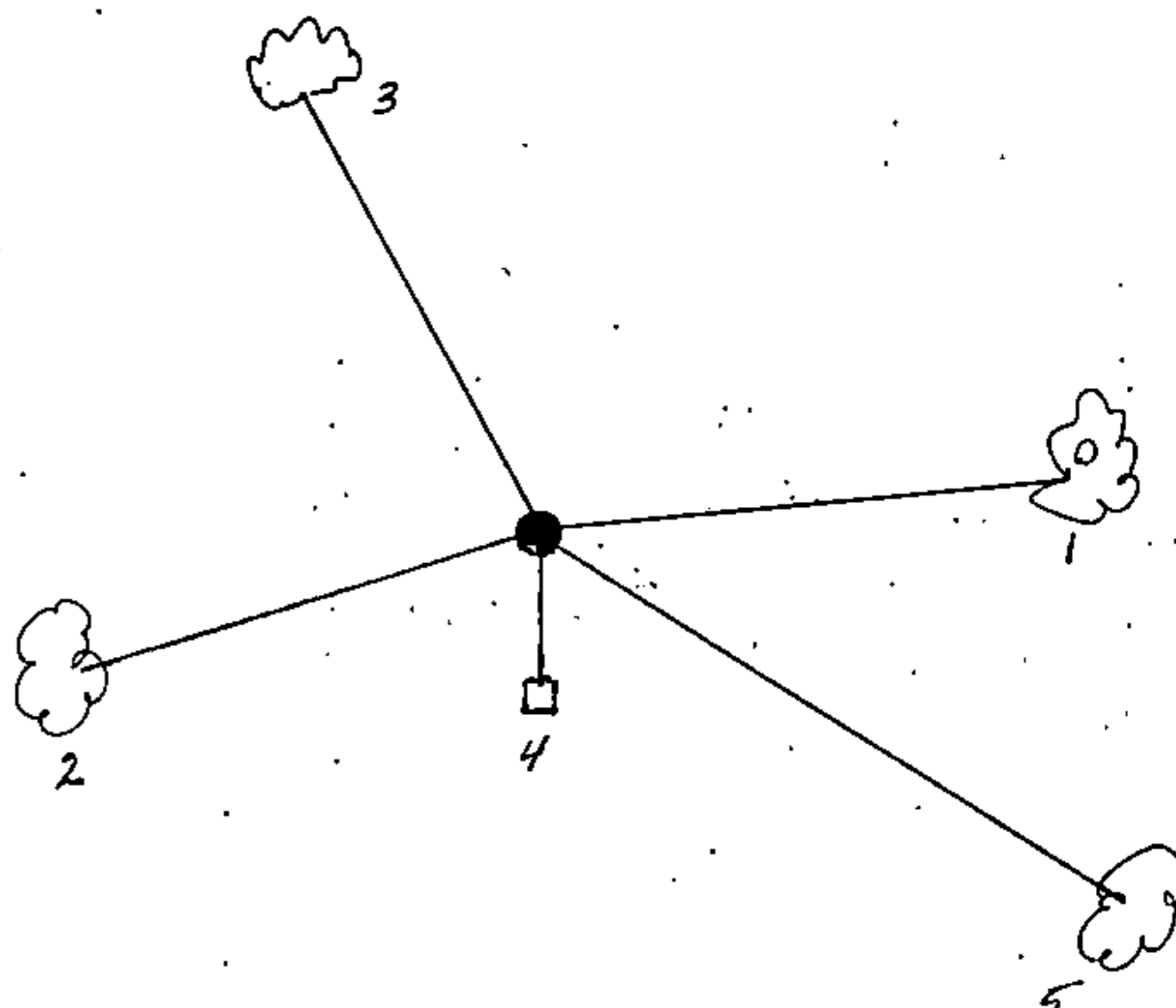
On 7-2-99, Gary L. Pisoni, RLS, found the monument as described above, the bearing trees as described below and made a new bearing tree as described below.

See previous Land Corner Certificate dated March 11, 1987, Document Number 132378

- (c) In the plan view drawing below, provide reference ties to at least 4 witness monuments, or, if the location is within a municipality, to at least 2 witness monuments. (witness monuments shall be made of concrete, natural stone, iron or other equally durable material.)

- (d) Show a plan view drawing depicting the relevant monuments and reference ties which is sufficient in detail to enable accurate relocation of the corner monument if the corner monument is disturbed. Indicate north.

1. Aspen, 16", N72°E, 36.17 feet
2. Spruce, 18", S60°W, 71.82 feet
3. White Birch, 17", N23°W, 10.97 feet
4. Steel Sign Post, South, 1.50 feet
5. Sugar Maple, 8", S36°E, 44.11 feet (NBT)



REGISTER'S OFFICE  
 Forest County, Wis.  
 Received for record this 27<sup>th</sup> day  
 of October A.D., 1999 at  
10:05 o'clock A.M. and recorded  
 in Vol. Corner Restoration  
 page R-9  
*Kay Swanson, Deputy*  
 Register of Deeds

43914200000

(e) Describe any material discrepancy between the location of the corner as restored or reestablished and the location of that corner as previously restored or reestablished by distance and direction. Show the discrepancy on the plan view drawing under (d), above. Show the distances between the corner as previously restored or reestablished and (1) the corner as restored or reestablished, and (2) to at least 2 of the witness monuments shown on the drawing in (d), above.

None

(f) Was the corner restored through acceptance of (1) an obliterated evidence location, or, (2) a found perpetuated location?

Found perpetuated location.

(g & h) Was the corner reestablished through lost corner proportionate methods? If so, show the method, including the directions and distances to other public land survey corners used as evidence or used for proportioning in determining the corner location?

(1) I, Gary L. Pisoni

(type or print name) certify that the corner location shown on this record was determined by me or under my direction and control and that this U.S. Public Land Survey Monument Record is correct and complete to the best of my knowledge and belief.

*Gary L. Pisoni*

10-2-99

Signature

Date

CERTIFICATE READY FOR FILING:

*C. B. [Signature]*  
District Ranger

