

U.S. PUBLIC LAND SURVEY MONUMENT RECORD

Index No. L-5

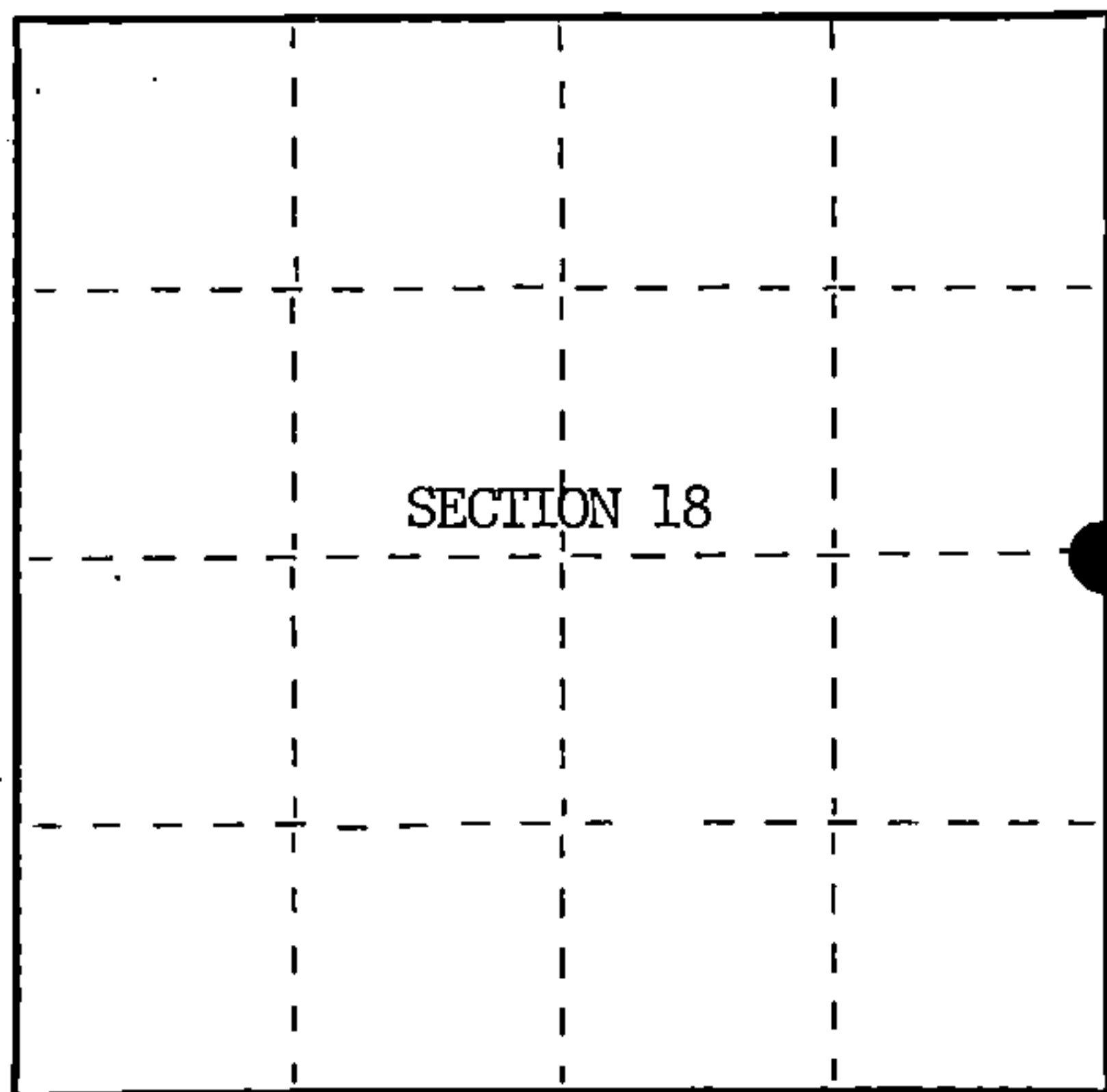
State of Wisconsin }
County of Forest } ss.

I, William B. Cochran, do hereby certify that on the 27th day of August, 1985, I found evidence of the East Quarter corner of Section 18 Township 39, North, Range 14 East, Fourth Principal Meridian, as described hereon; and that from this evidence I established a new monument and accessories as described hereon to perpetuate the original location of this corner.

Resident witnesses:

Tony Tillman

State Plane Co-ordinates
N- 255,078.9940
E-2,311,309.9860



○ = Corner monument restored.

History of original corner establishment:

Original Government Survey in 1865 by William E. Daugherty and Alex McDill. North between Sections 17 and 18, 40.00 chs., set Quarter Section Post to Sections 17 and 18, from which the following bear; Cedar, 12", S65°W, 34 lks., Cedar, 14", N56°E, 13 lks. In 1928, Melindy, a Local Surveyor, sub-divided Section 18. He re-established the corner position and set a 4"x4" Cedar Post, from which the following bear;

Cedar (Stump)	18"	N12°30'E	30.80 feet
Pine (Stump)	28"	N65°15'W	56.00 feet

Description of corner evidence found:

Found 4"x4" Squared Post, alongside a 2 inch diameter iron pipe, from which a Pine Stump bears N65°15'W, 56.00 feet.

I accept the Wood Post and Iron Pipe, in concurrence with the bearing tree evidence as the best available evidence for restoring the corner position.

No original corner evidence was recovered.

Description of monument and accessories I established to perpetuate the original location of this corner.

In place of Wood Post, set a 2½ inch diameter aluminum pipe monument, 3 feet long, 2½ feet in the ground, with an aluminum cap stamped; T39N, R14E, 1/4, S17, S18, 1985, S-1107. From which the following new blazed and scribed bearing trees bear;

B. Ash	10"	N37°E	43.94 feet
B. Ash	7"	S88°E	59.90 feet
Steel Sign Post		NW	2.00 feet

Dated at Hiles, Wis., this 18th day of March, 1986

Signature William B. Cochran Title Land Surveyor Registration No. S-1107
(County Surveyor, Registered Land Surveyor, or other duly authorized official)

Office of Register of Deeds, County of Forest, I hereby certify that the within instrument was filed in this office for record on the 11th day of March, 1987 at 3:30 o'clock P. M.

Paul A. Schreiber
(Register of Deeds)

By _____ Deputy

FORM NO. 985-A

H.C. Miller Company

Stock No. 26273

DOCUMENT NUMBER 132355

43914182090

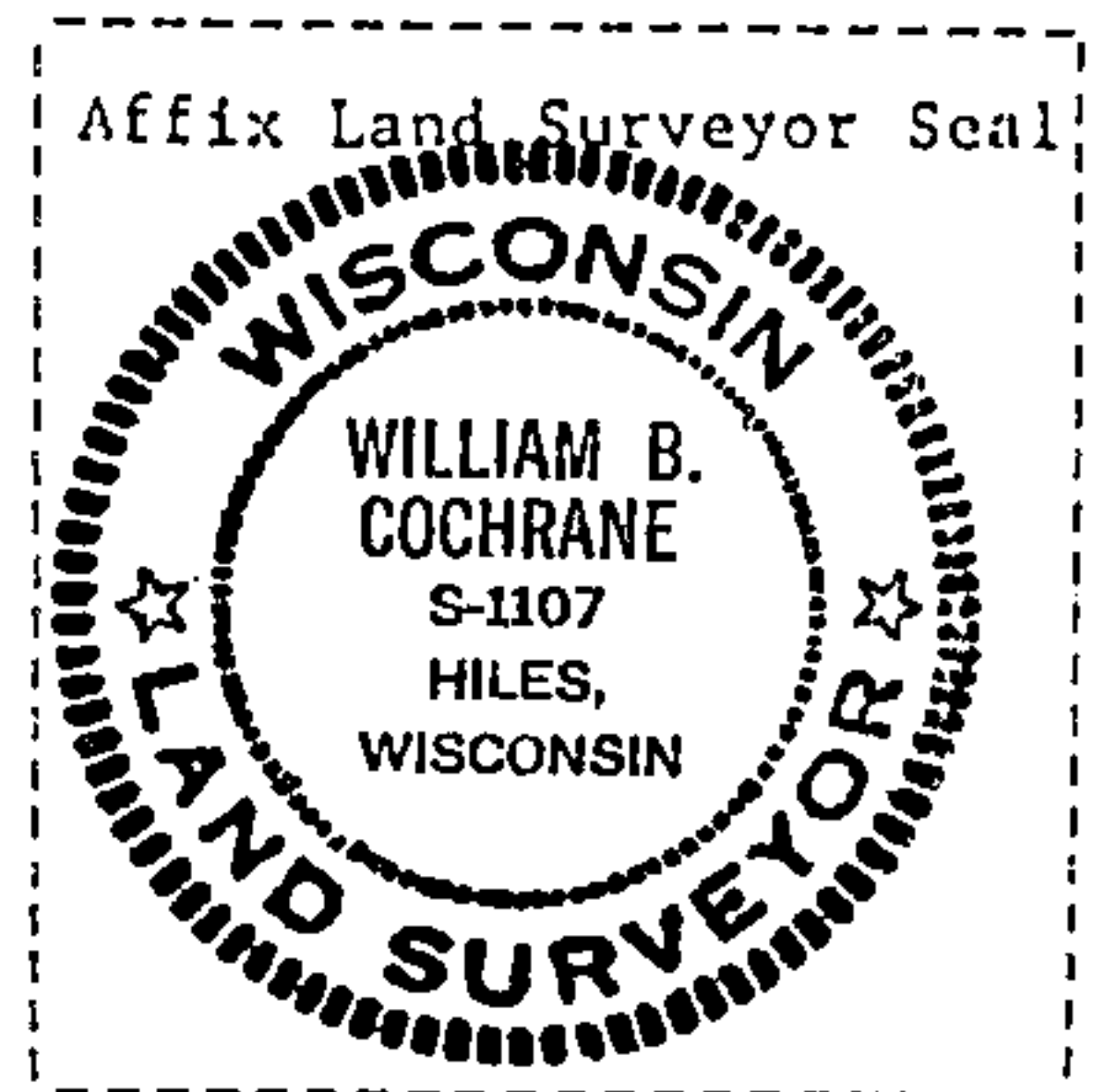
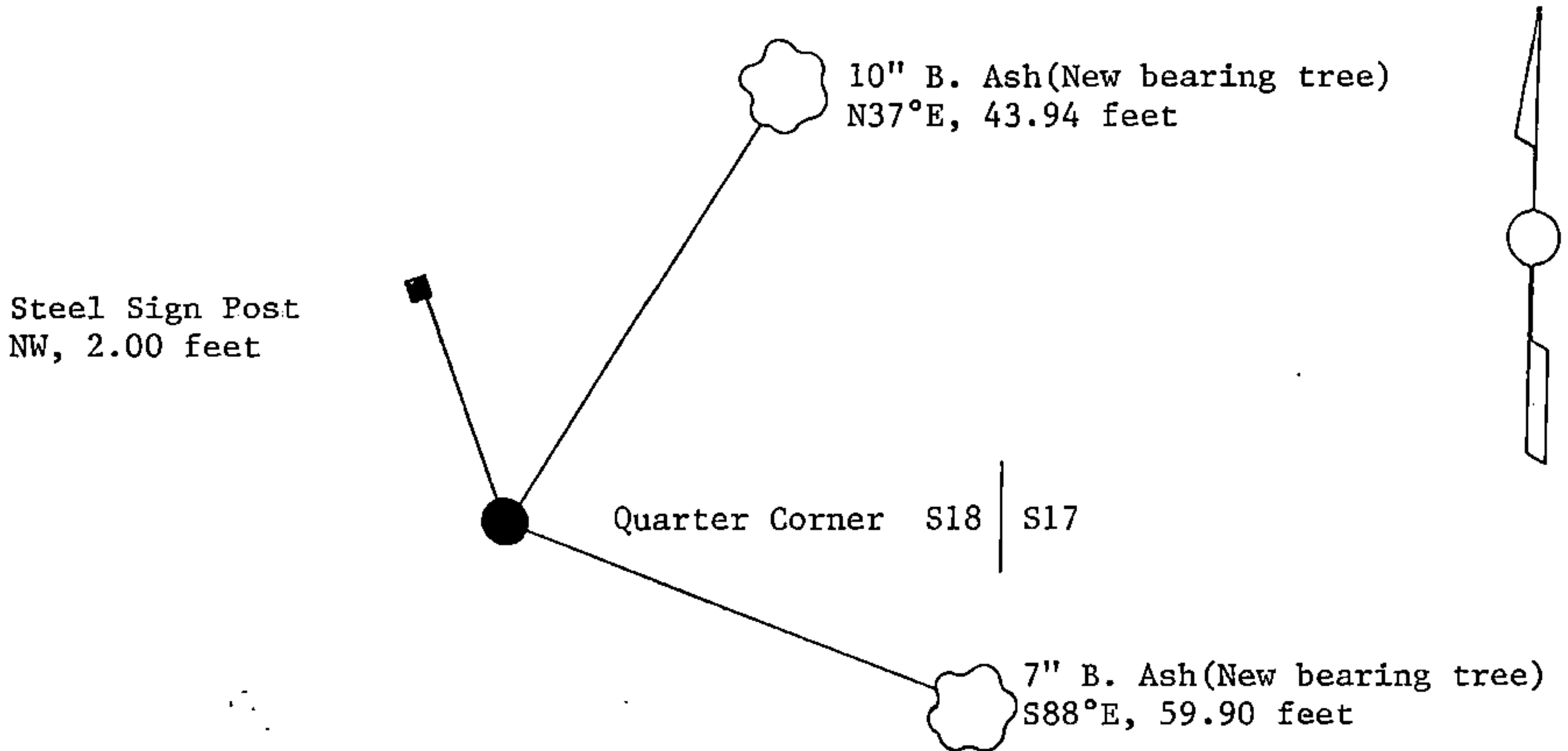
(e) Describe any material discrepancy between the location of the corner as restored or reestablished and the location of that corner as previously restored or reestablished by distance and direction. Show the discrepancy on the plan view drawing under (d), above. Show the distances between the corner as previously restored or reestablished and (1) the corner as restored or reestablished, and (2) to at least 2 of the witness monuments shown on the drawing in (d), above.

See drawing below.

(f) Was the corner restored through acceptance of (1) an obliterated evidence location, or, (2) a found perpetuated location?

Restored from accepted evidence.

(g&h) Was the corner reestablished through lost corner proportionate methods? If so, show the method, including the directions and distances to other public land survey corners used as evidence of used for proportioning in determining the corner location?



(i) I, William B. Cochrane
 (type or print name) certify that the corner location shown on this record was determined by me or under my direction and control and that this U.S. Public Land Survey Monument Record is correct and complete to the best of my knowledge and belief.

William B. Cochrane October 7, 1986
 Signature Date

Survey requested by: [Signature] 3-9-87
 District Ranger Date