

U.S. PUBLIC LAND SURVEY MONUMENT RECORD

Index No. N-5

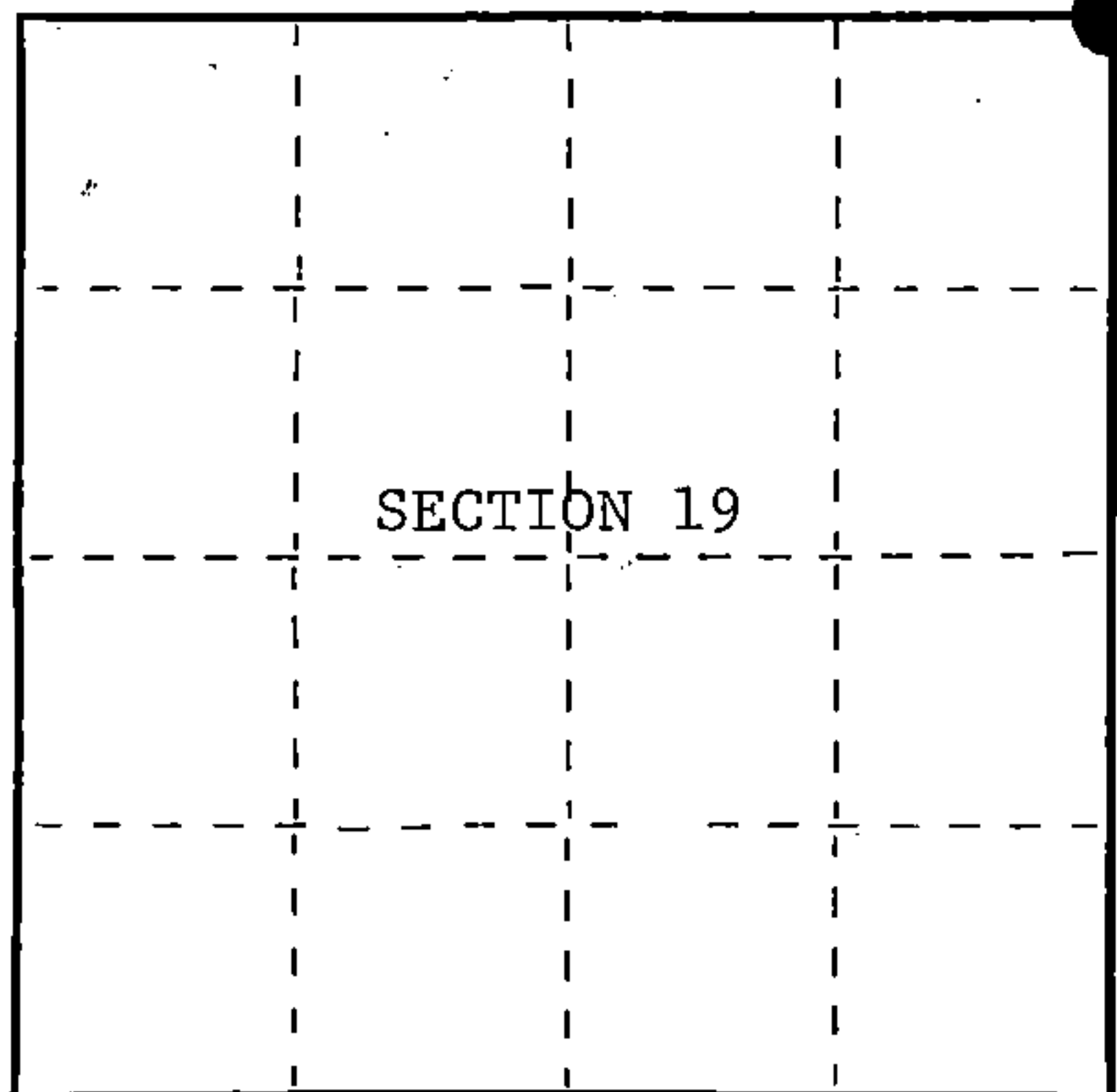
State of Wisconsin }  
 County of Forest } ss.

I, William B. Cochrane, do hereby certify that on the 19th day of October, 1986, I found evidence of the Northeast Section corner of Section 19, Township 39, North, Range 14 East, Fourth Principal Meridian, as described hereon; and that from this evidence I established a new monument and accessories as described hereon to perpetuate the original location of this corner.

Resident witnesses:

Tony Tillman

State Plane Co-ordinates  
 N- 252,325.8830  
 E-2,311,262.9689



○ = Corner monument restored.

History of original corner establishment:

Original Government Survey in 1865 by William E. Daugherty and Alex McDill. North between Sections 19 and 20, at 80.00 chains, set Section Corner Post to Sections 17, 18, 19, and 20, from which the following bear;

Hemlock	16"	N84°E	20 lks.
Sugar	12"	S32°W	15 lks.

Description of corner evidence found:

Found F.R. #2168 which bears East and West. F.R. #2444 bears North and South.

I accept the intersection of these roads as the best available evidence for restoring the corner position.

Description of monument and accessories I established to perpetuate the original location of this corner.

At the corner position, set a 2½ inch diameter aluminum pipe monument, 3 feet long, 4 feet in the ground (1 foot below road surface), with an aluminum cap stamped; T39N, R14E, S17, S18, S19, S20. From which the following new blazed and scribed bearing trees bear;

Maple	10"	N54°E	61.80 feet
Ash	14"	S70°E	56.02 feet
Hemlock	9"	S01°E	60.80 feet
Maple	3"	N60°W	58.22 feet
Steel Sign Post		South	20.00 feet

Dated at Hiles, Wis., this 9th day of February, 1987.

Signature *William B. Cochrane* Title Land Surveyor Registration No. S-1107  
 (County Surveyor, Registered Land Surveyor, or other duly authorized official)

Office of Register of Deeds, County of Forest, I hereby certify that the within instrument was filed in this office for record on the 11th day of March, 1987 at 3:30 o'clock P. M.

*Paul Aschenbrenner*  
 (Register of Deeds)

By \_\_\_\_\_ Deputy

FORM NO. 985-A

HCMiller Company

Stock No. 26273

DOCUMENT NUMBER 132362

43914180000

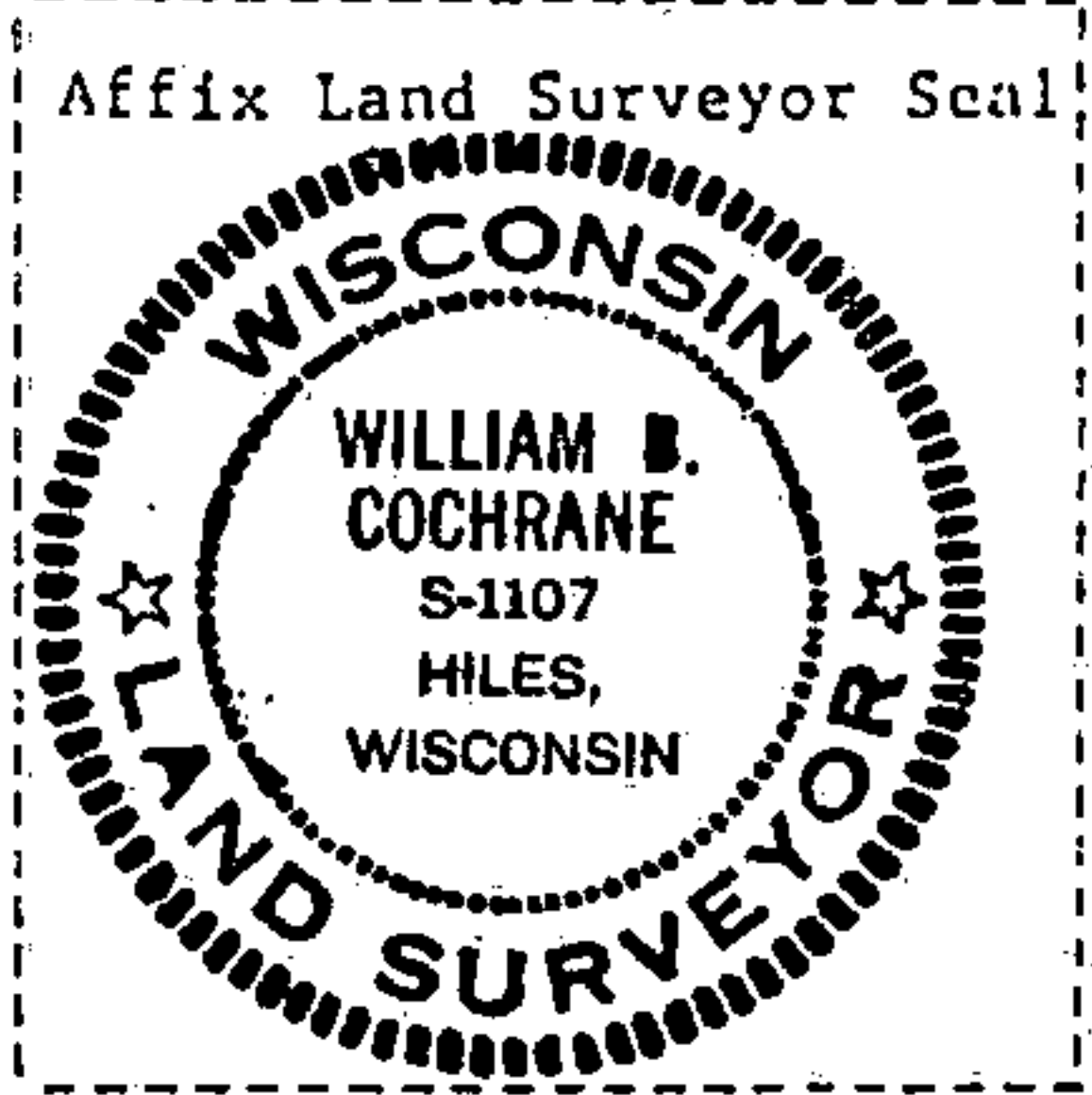
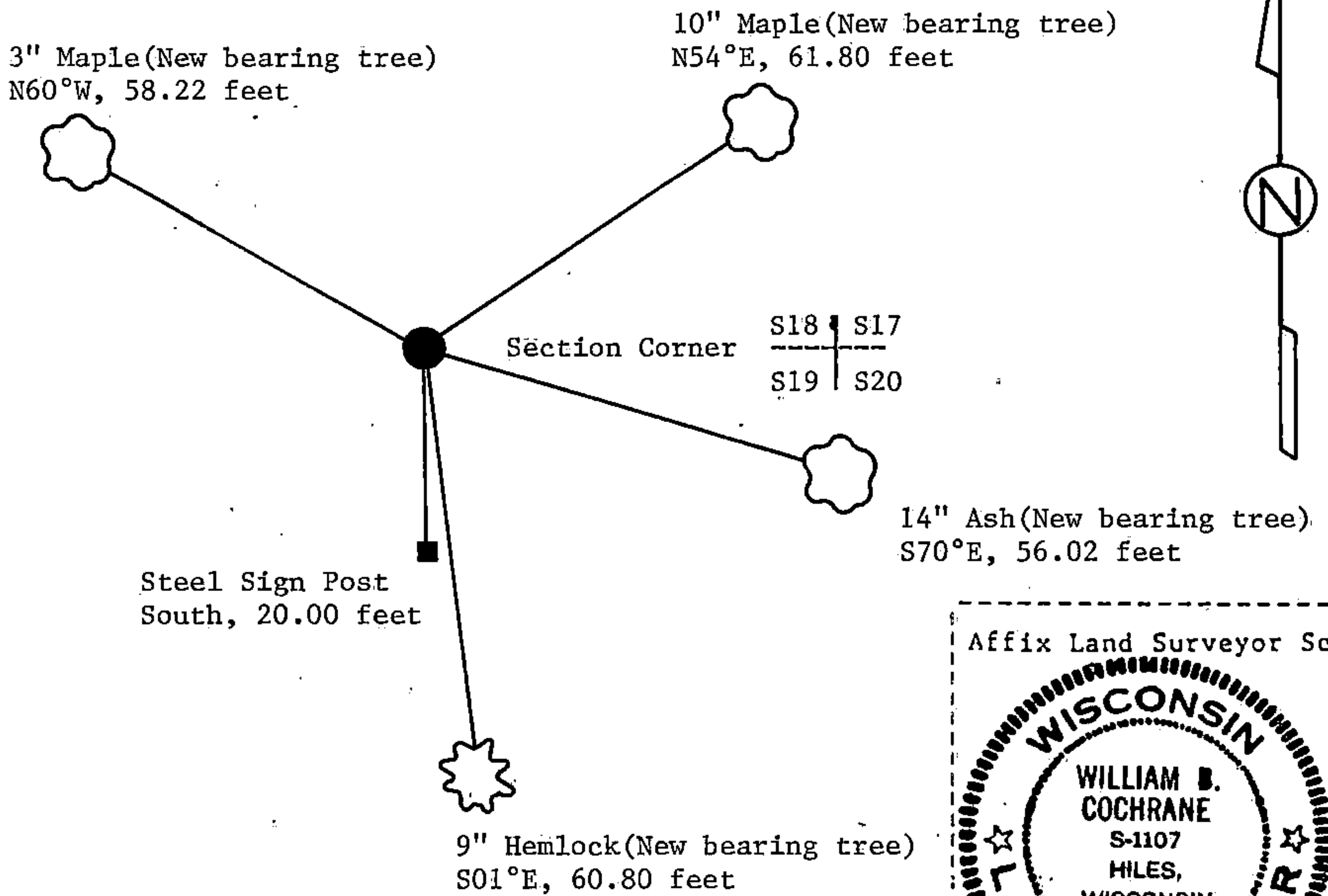
(e) Describe any material discrepancy between the location of the corner as restored or reestablished and the location of that corner as previously restored or reestablished by distance and direction. Show the discrepancy on the plan view drawing under (d), above. Show the distances between the corner as previously restored or reestablished and (1) the corner as restored or reestablished, and (2) to at least 2 of the witness monuments shown on the drawing in (d), above.

See drawing below.

(f) Was the corner restored through acceptance of (1) an obliterated evidence location, or, (2) a found perpetuated location?

Restored from accepted evidence.

(g&h) Was the corner reestablished through lost corner proportionate methods? If so, show the method, including the directions and distances to other public land survey corners used as evidence or used for proportioning in determining the corner location?



(i) I, William B. Cochrane (type or print name) certify that the corner location shown on this record was determined by me or under my direction and control and that this U.S. Public Land Survey Monument Record is correct and complete to the best of my knowledge and belief.

William B. Cochrane Signature      February 9, 1987 Date

Survey requested by: [Signature] District Ranger      3-9-87 Date

REGISTER'S OFFICE  
 Forest County, Wis.  
 Received for record this 30<sup>th</sup> day  
 of September A.D., 2008 at  
9:00 o'clock A.M. and recorded  
 in Vol. Corner Restoration  
 page N-5

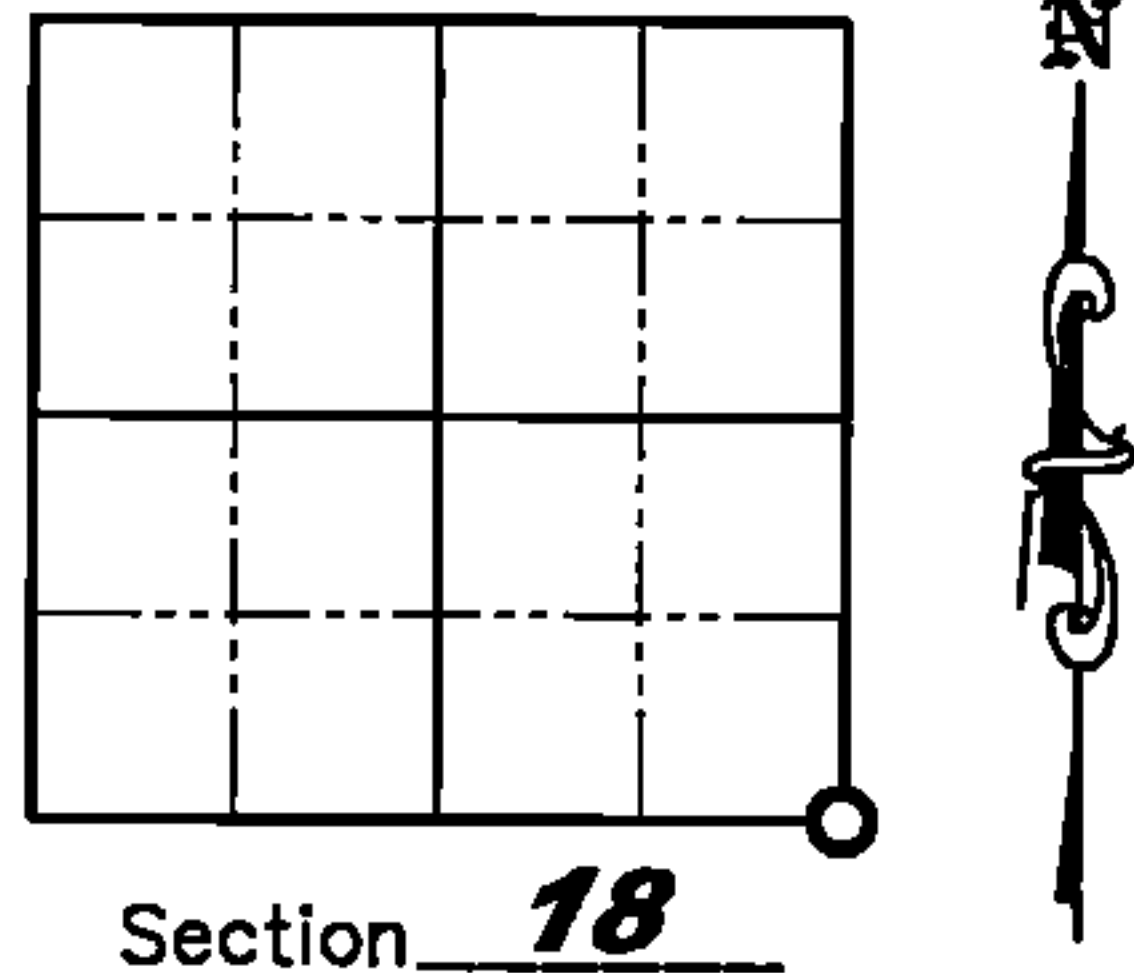
Document Number  
 198706

*Kay Swanson, Deputy*  
 Register of Deeds

# U.S. PUBLIC LAND SURVEY MONUMENT RECORD

NOTE: This form is intended and designed to fulfill all requirements of Wisconsin Administrative Code, Chapter A-E 7 .08 U.S. Public Land Survey Monument Record (3)(a)(b)(c)(d)(e)(f)(g)(h)(i). An additional sheet may be added if necessary to conform with said requirements.

(a) Corner location: Township 39 North  
 Range 14 East/West  
 Town of Popple River  
 County of Forest



Section 18

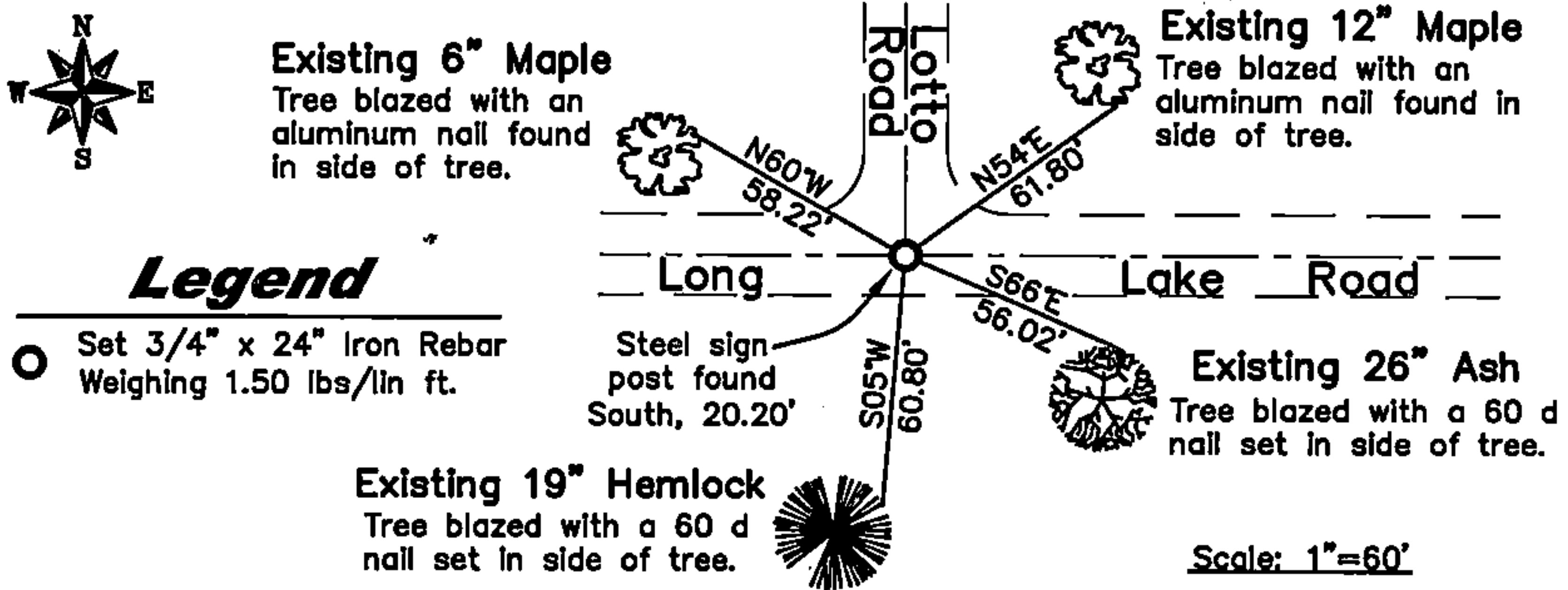
(b)(f)(g)(h) Description of monument found at this corner and if it was accepted, state all evidence (material, testimonial, occupation, plats, records, other monuments) used as a basis for accepting. If not accepted or if nothing was found, state evidence used as a basis for establishing location. If reestablished through lost corner proportionate methods, indicate all monuments, distances and directions used to establish. Indicate type of monument found or set and sign post.

April/May 1865 - William E. Daugherty set original Section corner post; BT's: 16" Hemlock, N84°E, 20 links; 12" Sugar, S32°W, 15 links.

February 9, 1987 - William B. Cochrane found F.R. #2168 which bears East and West and F.R. #2444 which bears North and South. He accepted the intersection of these roads as the best available evidence for restoring corner position. He set a 2-1/2" aluminum pipe monument, 3 feet long, 4 feet in the ground (1 foot below road surface), with an aluminum cap stamped; T39N, R14E, S17, S18, S19, S20. from which the following new blazed and scribed bearing trees bear: 10" Maple, N54°E, 61.80'; 14" Ash, S70°E, 56.02'; 9" Hemlock, S01°E, 60.80'; 3" Maple, N60°W, 58.22'; Steel Sign Post, South 20.00'.

September 25, 2008 - Jonathan W. Dulin visited corner and found all four bearing trees established by William B. Cochrane in good condition. The monument at the intersection of Lotto Road and Long Lake Road was missing. We set a 3/4" by 24" iron rebar, 6" below the road surface, using the four bearing trees.

(c)(d)(e) Plan view of corner with ties to at least 4 witness monuments. If in disagreement with previously established corner, show the distances between the two corners and also indicate the ties to the disputed corner.



**Legend**  
 ○ Set 3/4" x 24" Iron Rebar Weighing 1.50 lbs/lin ft.

Existing 6" Maple  
 Tree blazed with an aluminum nail found in side of tree.

Existing 12" Maple  
 Tree blazed with an aluminum nail found in side of tree.

Steel sign post found South, 20.20'

Existing 26" Ash  
 Tree blazed with a 60 d nail set in side of tree.

Existing 19" Hemlock  
 Tree blazed with a 60 d nail set in side of tree.

Scale: 1"=60'

(i) I, Jonathan W. Dulin, certify that the corner location on this record was determined by me under my direction and control and that this U.S. Public Land Survey Monument is correct and complete to the best of my knowledge and belief.

*Jonathan W. Dulin*  
 Signature  
 JONATHAN W. DULIN  
 S-2754  
 RHINELANDER  
 WISCONSIN  
 LAND SURVEYOR  
 9/26/2008  
 Date

43914180000

Index No. N-5