

U.S. PUBLIC LAND SURVEY MONUMENT RECORD

Index No. N-15

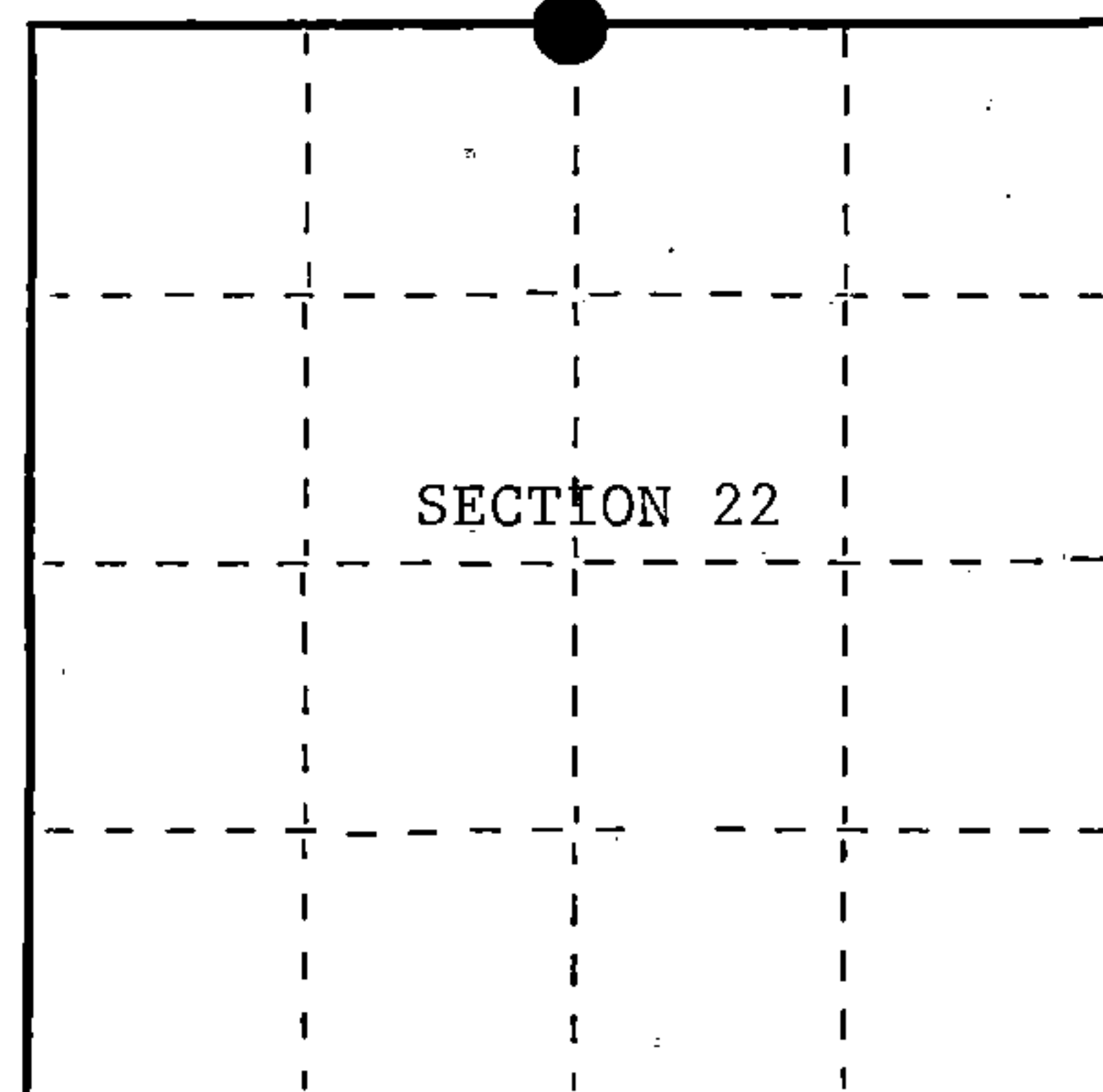
State of Wisconsin }
 County of Forest } ss.

I, William B. Cochran, do hereby
 certify that on the 10th day
 of September, 1985, I found
 evidence of the North Quarter
 corner of Section 22
 Township 39, North, Range
 14 East, Fourth Principal Meridian,
 as described hereon; and that from this evidence
 I established a new monument and accessories
 as described hereon to perpetuate the original
 location of this corner.

Resident witnesses:

Tony Tillman

State Plane Co-ordinates
 N- 252,987.0777
 E-2,324,387.1790



○ = Corner monument restored.

History of original corner establishment:

Original Government Survey in 1865 by William E. Daugherty and Alex McDill.
 West corrected between Sections 15 and 22, at 47.50 chains creek runs NE.
 At 40.17 chains, set Quarter Section Post to Sections 15 and 22, from which
 the following bear;

Tamarack	8"	N42°E	10 lks.
Tamarack	8"	S51°W	10 lks.

Description of corner evidence found:

Found creek running Northeast.

F.R. #2168 bears East and West.

I re-stored the corner position using the creek call and the Center-Line of
 F.R. #2168.

Description of monument and accessories I established to perpetuate the original location of this corner.

At the corner position, set a 1½ inch diameter aluminum pipe monument, 3 feet long,
 4 feet in the ground (1 foot below the road surface), with an aluminum cap stamped:
 T39N, R14E, 1/4, S15, S22, 1986, S-1107. From which the following new blazed and
 scribed bearing trees bear;

Spruce	12"	N45°E	92.46 feet
Aspen	6"	S53°E	47.30 feet
Steel Sign Post		South	22.00 feet

Dated at Hiles, Wis., this 11th day of February, 1987.

Signature William B. Cochran Title Land Surveyor Registration No. S-1107
 (County Surveyor, Registered Land Surveyor, or other duly authorized official)

Office of Register of Deeds, County of Forest, I hereby certify that the within
 instrument was filed in this office for record on the 11th day of March, 1987
 at 3:30 o'clock P. M.

Faul Axelsen Brenner
 (Register of Deeds)

By _____ Deputy

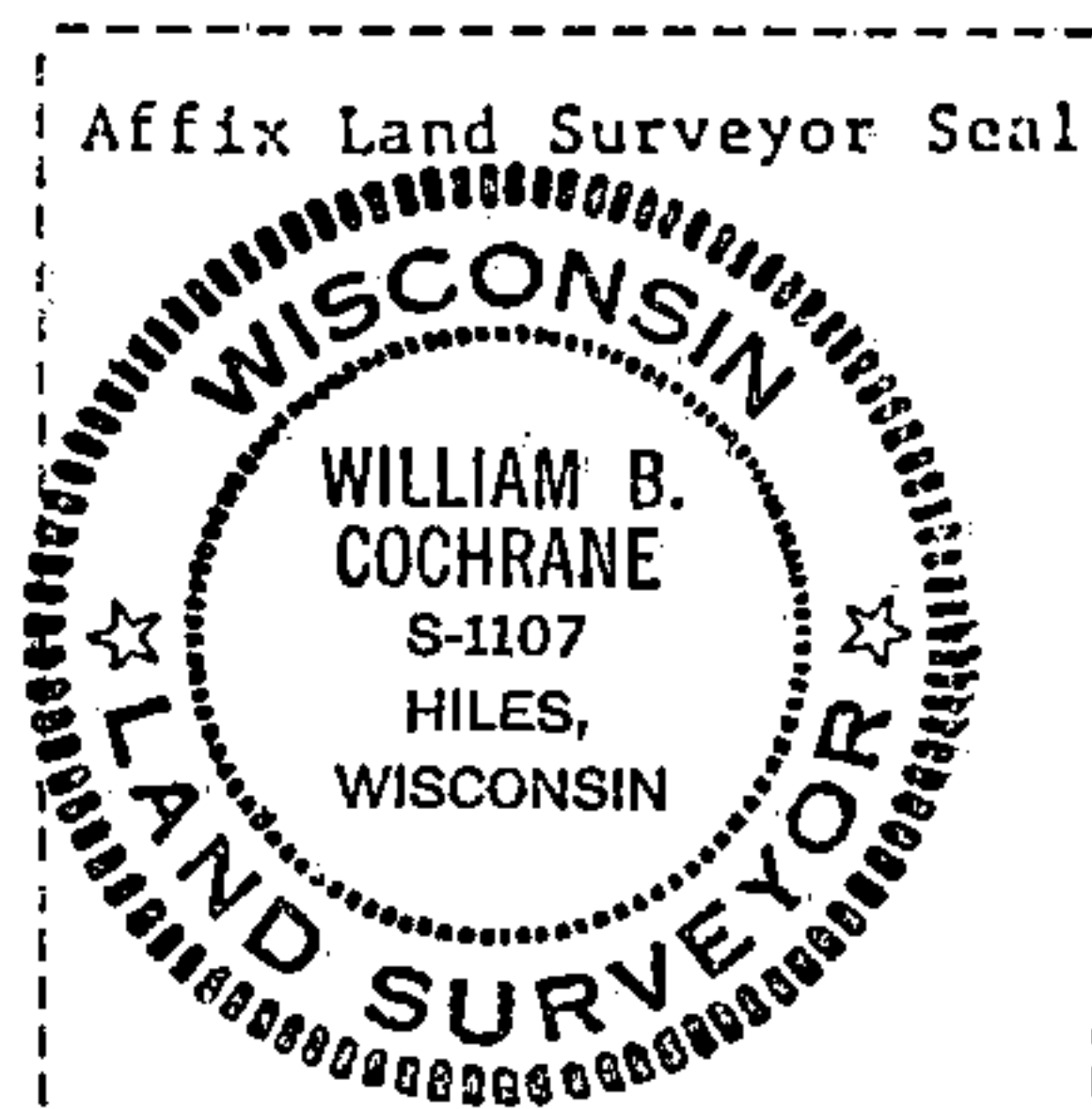
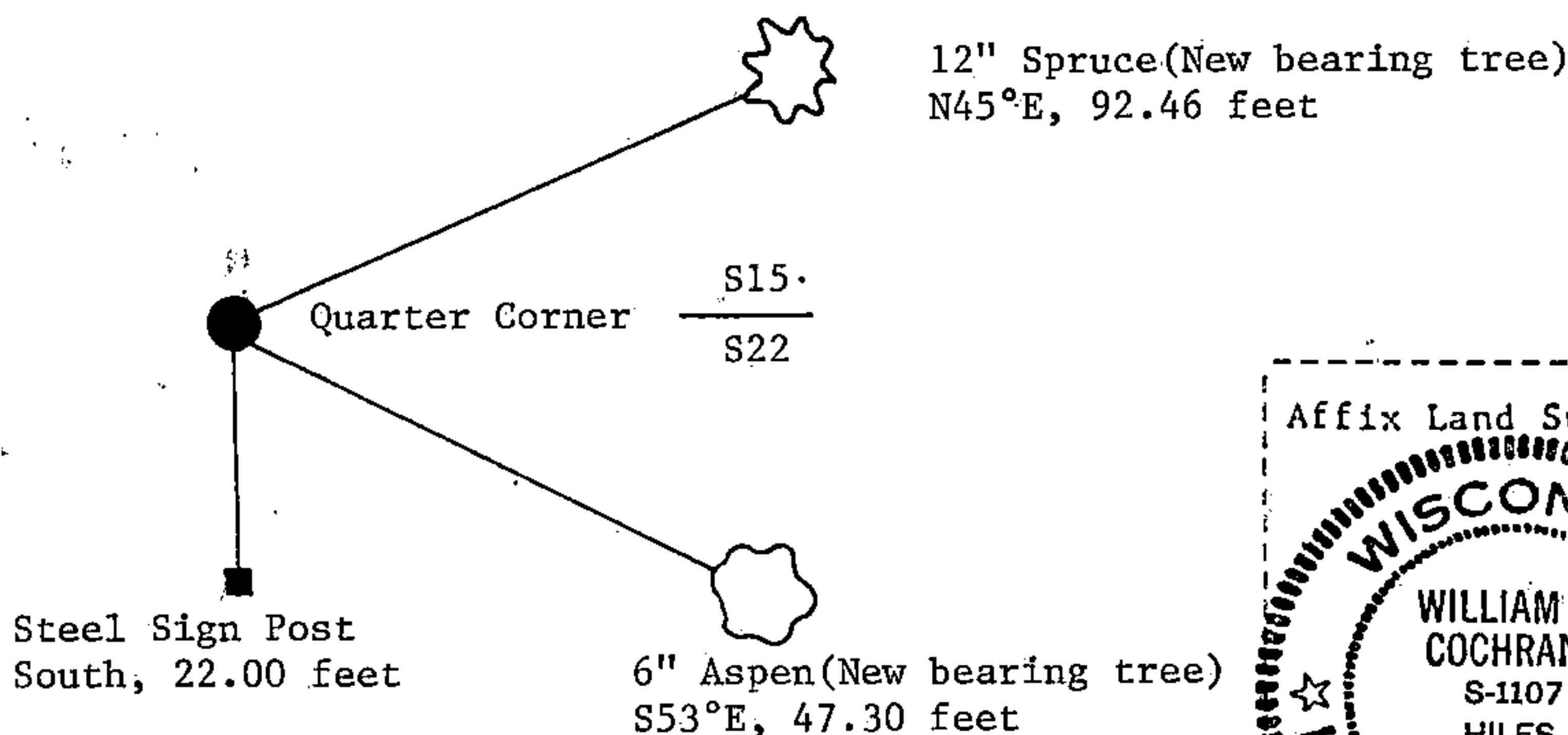
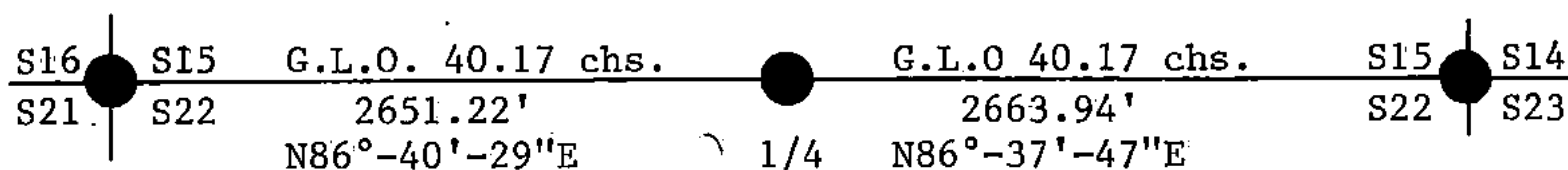
- (e) Describe any material discrepancy between the location of the corner as restored or reestablished and the location of that corner as previously restored or reestablished by distance and direction. Show the discrepancy on the plan view drawing under (d), above. Show the distances between the corner as previously restored or reestablished and (1) the corner as restored or reestablished, and (2) to at least 2 of the witness monuments shown on the drawing in (d), above.

See drawing below.

- (f) Was the corner restored through acceptance of (1) an obliterated evidence location, or, (2) a found perpetuated location?

- (g&h) Was the corner reestablished through lost corner proportionate methods? If so, show the method, including the directions and distances to other public land survey corners used as evidence or used for proportioning in determining the corner location?

This corner position was re-established using State Plane Co-ordinates computed from Aerial Photography and a Global Positioning Satellite Survey. The computed corner position was located in the field using a North Seeking Gyro, an Electronic Distance Meter, and/or a steel tape.



- (i) 1. William B. Cochrane
[type or print name] certify that the corner location shown on this record was determined by me or under my direction and control and that this U.S. Public Land Survey Monument Record is correct and complete to the best of my knowledge and belief.

William B. Cochrane February 11, 1987
Signature Date

Survey requested by: Edward J. [Signature] 3-9-87
District Ranger Date