

# U.S. PUBLIC LAND SURVEY MONUMENT RECORD

Index No. N-17

State of Wisconsin }  
County of Forest } ss.

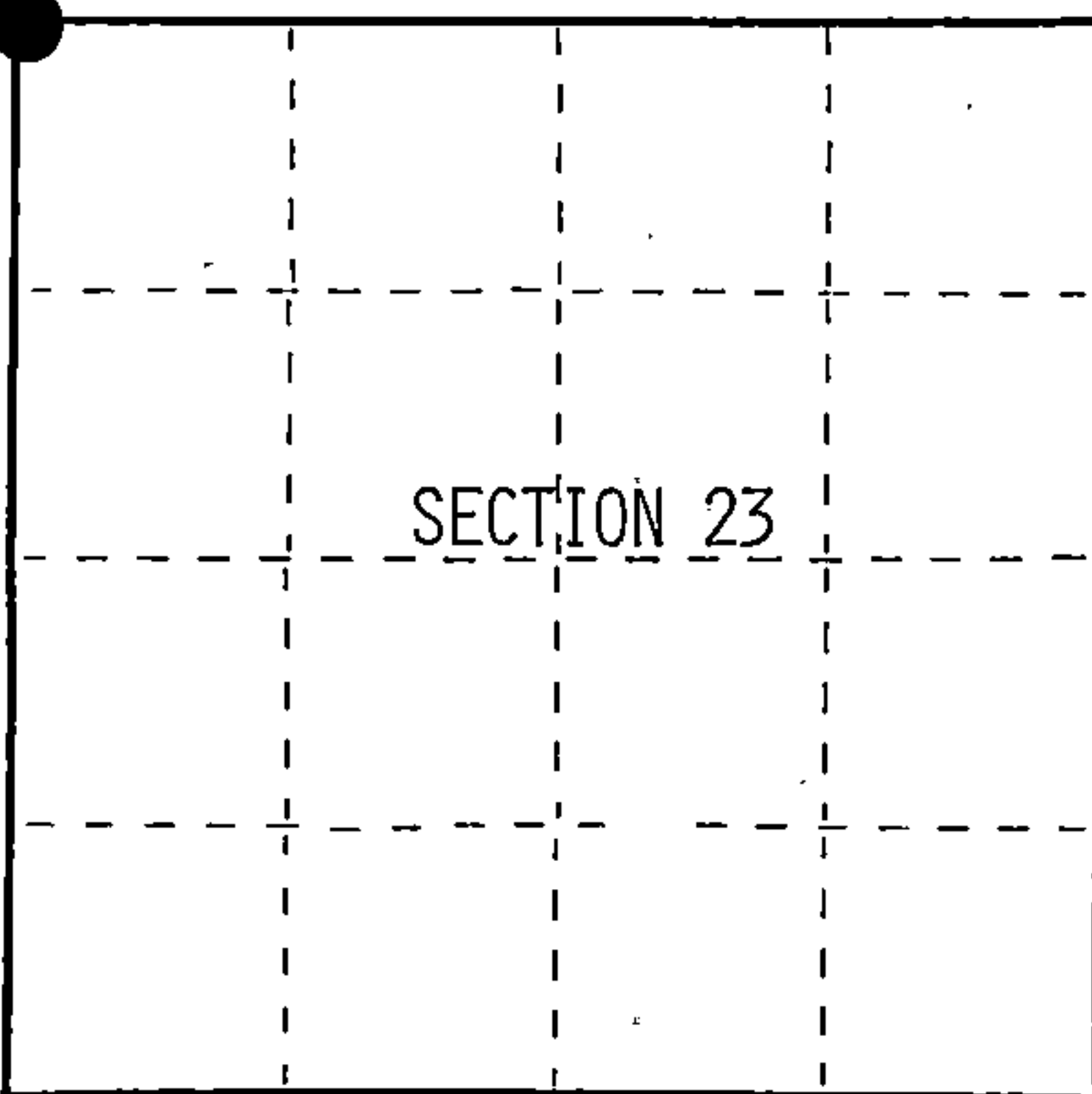
I, William B. Cochrane, do hereby  
certify that on the 20th day  
of May, 1987 I found  
evidence of the Northwest Section  
corner of Section 23  
Township 39, North, Range  
14 East, Fourth Principal Meridian,  
as described hereon; and that from this evidence  
I established a new monument and accessories  
as described hereon to perpetuate the original  
location of this corner.

Resident witnesses:

David Brownell

Tony Tillman

State Plane Co-ordinates  
N- 253,143.6909  
E- 2,327,046.5110



○ = Corner monument restored.

History of original corner establishment:

Original Government Survey in 1865 by William E. Daugherty and Alex McDill. North between Sections 22 and 23, at 80 chains, set Section Corner Post to Sections 14, 15, 22, and 23. From which the following bear; Birch, 7", N18°E, 8 lks., Birch, 10", S53°W, 14 lks.

In 1916, Melindy, a local surveyor, found original Birch stump, N18°E, 8 lks. From evidence set a 4"X4" Cedar Post, from which the following bear; Maple, 16", N73°45'W, 62 1/8 lks., Hemlock, 8", S47°15'E, 36 2/3 lks., Hemlock, 9", N38°40'E, 36 1/2 lks.

Description of corner evidence found:

No corner evidence was recovered.

The corner position was re-established in the Center-Line of F.R. #2168 and at Melindy's recorded distance of 2584.96 feet from the North Quarter Corner of Section 23.

Description of monument and accessories I established to perpetuate the original location of this corner.

At the corner position, set a 2½ inch diameter aluminum pipe monument, 3 feet long, 3½ feet in the ground( 6 inches below road surface), with an aluminum cap stamped; T39N, R14E, S14, S15, S22, S23, 1987, S-1107. From which the following new blazed and scribed bearing trees bear;

Maple	6"	N20°E	30.33 feet
Maple	5"	S56°E	46.73 feet
Maple	8"	S18°W	44.27 feet
Maple	4"	N54°W	54.18 feet
Steel Sign Post		North	20.50 feet

Dated at Hiles, Wis., this 25th day of May, 1987

Signature \_\_\_\_\_ Title Land Surveyor Registration No. S-1107  
(County Surveyor, Registered Land Surveyor, or other duly authorized official)

Office of Register of Deeds, County of Forest. I hereby certify that the within  
instrument was filed in this office for record on the 18th day of March, 1988  
at 12:50 o'clock P. M.

Paul Aschenbrenner  
(Register of Deeds)

By \_\_\_\_\_ Deputy

FORM NO. 985-A

H.C. Miller Company  
Milwaukee, Wisconsin

Stock No. 26273

DOCUMENT NUMBER **134838**

43914150000

- (e) Describe any material discrepancy between the location of the corner as restored or reestablished and the location of that corner as previously restored or reestablished by distance and direction. Show the discrepancy on the plan view drawing under (d), above. Show the distances between the corner as previously restored or reestablished and (1) the corner as restored or reestablished, and (2) to at least 2 of the witness monuments shown on the drawing in (d), above.

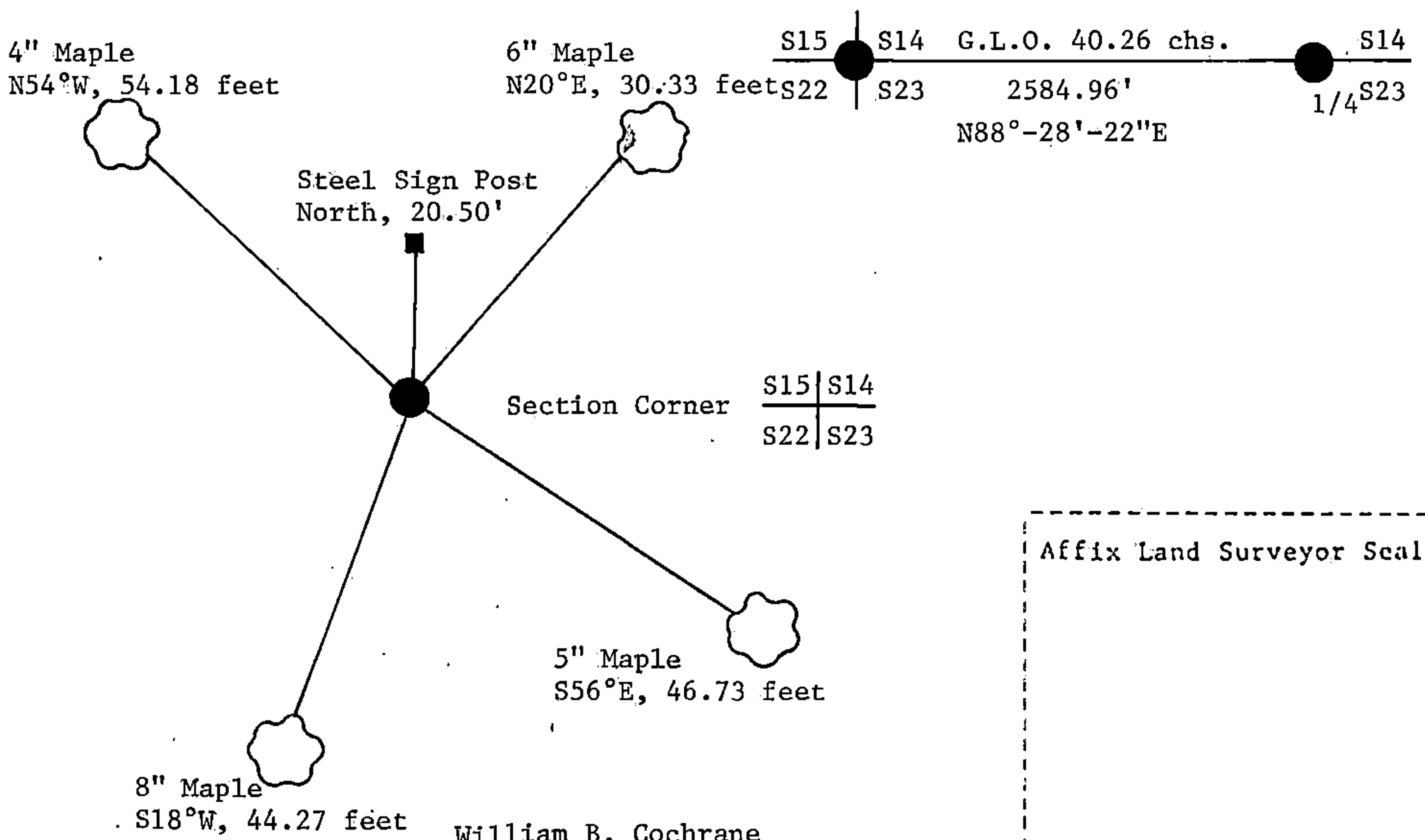
See drawing below.

- (f) Was the corner restored through acceptance of (1) an obliterated evidence location, or, (2) a found perpetuated location?

Re-established using proportionate methods and Center-Line of road.

- (g&h) Was the corner reestablished through lost corner proportionate methods? If so, show the method, including the directions and distances to other public land survey corners used as evidence or used for proportioning in determining the corner location?

This corner was re-established using State Plane Co-ordinates computed from Aerial Photography and a Global Positioning Satellite Survey. The computed corner position was located in the field using a North Seeking Gyro, an Electronic Distance Meter, and/or a steel tape.



- (i) I, William B. Cochrane  
(type or print name) certify that the corner location shown on this record was determined by me or under my direction and control and that this U.S. Public Land Survey Monument Record is correct and complete to the best of my knowledge and belief.

Signature

Date

Survey requested by;

District Ranger

Date

*Edward Wenger*

3-8-88