

CERTIFIED LAND CORNER RESTORATION

State of Wisconsin }
County of Forest } ss.

I Jean F. Resvick, do hereby certify that on the 14 day of November, 1975, I found evidence of the East Quarter corner of Section 14 Township 39 North, Range 14 East, Fourth Principal Meridian, as described hereon; and that from this evidence I established a new monument and accessories as described hereon to perpetuate the original location of this corner:

Description of original monument and accessories and subsequent restorations:

Surveyed in 1865 by William E. Daugherty
40.00 chains North between Sections 13 and 14, set post.
Hemlock 8, N16W, 18 lks.
Sugar 12, S44E, 15 lks.
North, 28.50 chains enter tamarack swamp bears East and West.

Description of corner evidence found:

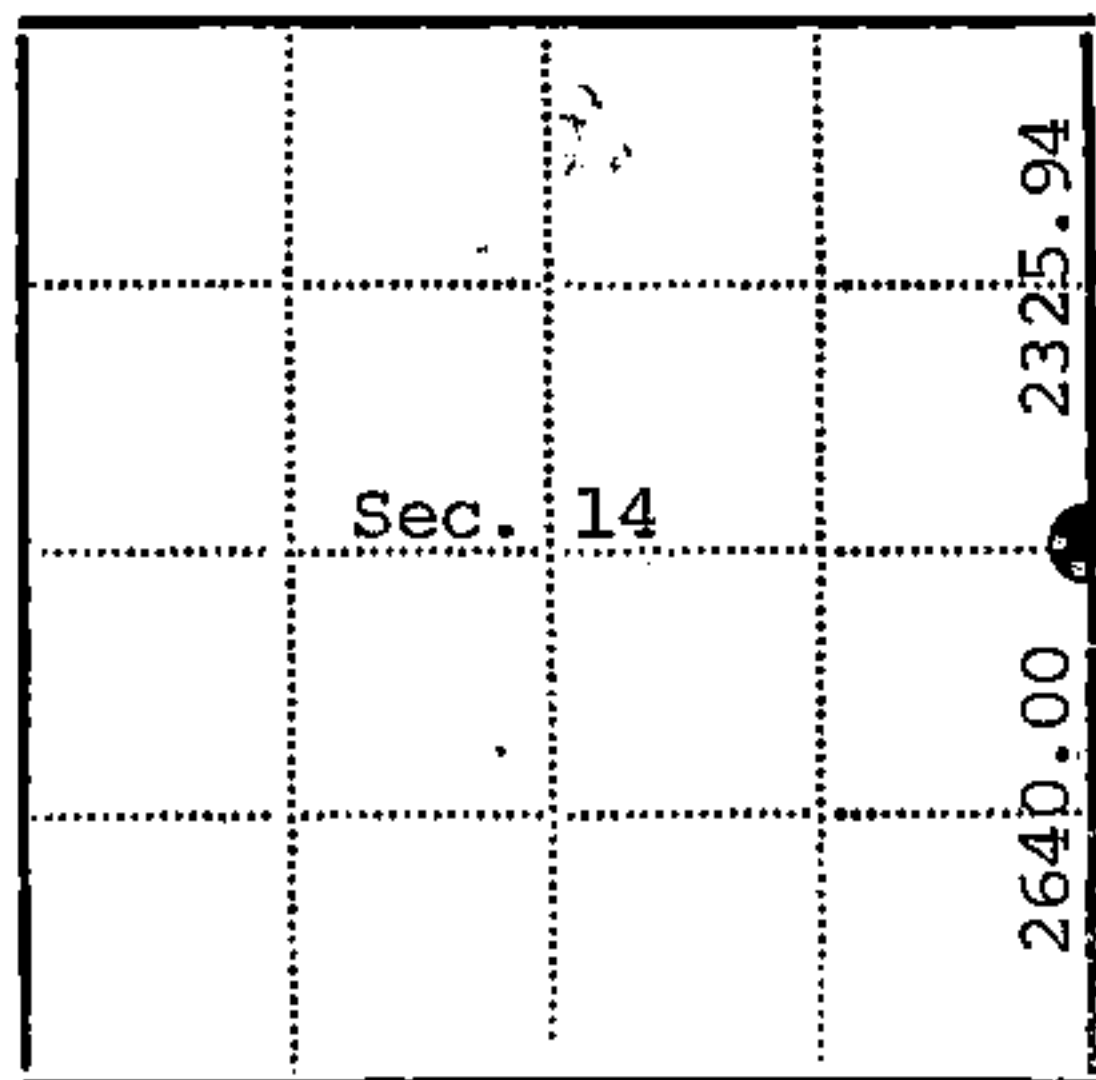
No original evidence found.
This corner was established on line between the Southeast section corner and the Northeast section corner of Section 14. The corner was set at record distance between the Southeast section corner and swamp call to the North placing the error of distance in the North portion of the section. The error is placed in the swamp.

Description of monument and accessories I established to perpetuate the location of this corner:

At a point N2° 01' 05"E, 2640 feet from the Southeast corner of Section 14 set a 2 inch inside diameter, galvanized iron pipe, 3 feet long, filled with concrete with brass cap stamped: T39N, R14E, 1/4, S14, S13, 1975, S-802.

Reference to the following new blazed and scribed bearing trees:
Maple 7, N33E, 76.28 feet
Maple 5, N17W, 69.03 feet
Fence corner, N50E, 100.70 feet, fence runs West

4391414 2000



● - Corner monument restored
□ -

Resident witnesses

Dated at Rhinelander Wisconsin, this 21 day of April 1976

Signature Jean F. Resvick Title Land Surveyor
(County Surveyor, Registered Land Surveyor, or other duly authorized official)

Surveyors Registration No. S-802 DOCUMENT NUMBER 109596

Office of Register of Deeds County of Forest

I hereby certify that the within instrument was filed in this office for record on the 2nd day of July 1976, and was filed in Book No. Page No. of County Records.

Signature Eugene Stutz Title Register of Deeds

Township 39 North, Range 14 East, Section 14, Index No. L-21, Page No.

U.S. PUBLIC LAND SURVEY MONUMENT RECORD

Index No. L-21

State of Wisconsin }
County of Forest } ss.

I, William B. Cochran, do hereby
certify that on the 18th day
of September, 1986, I found
evidence of the East Quarter
corner of Section 14
Township 39, North, Range
14 East, Fourth Principal Meridian,
as described hereon; and that from this evidence
I established a new monument and accessories
as described hereon to perpetuate the original
location of this corner.

Resident witnesses:

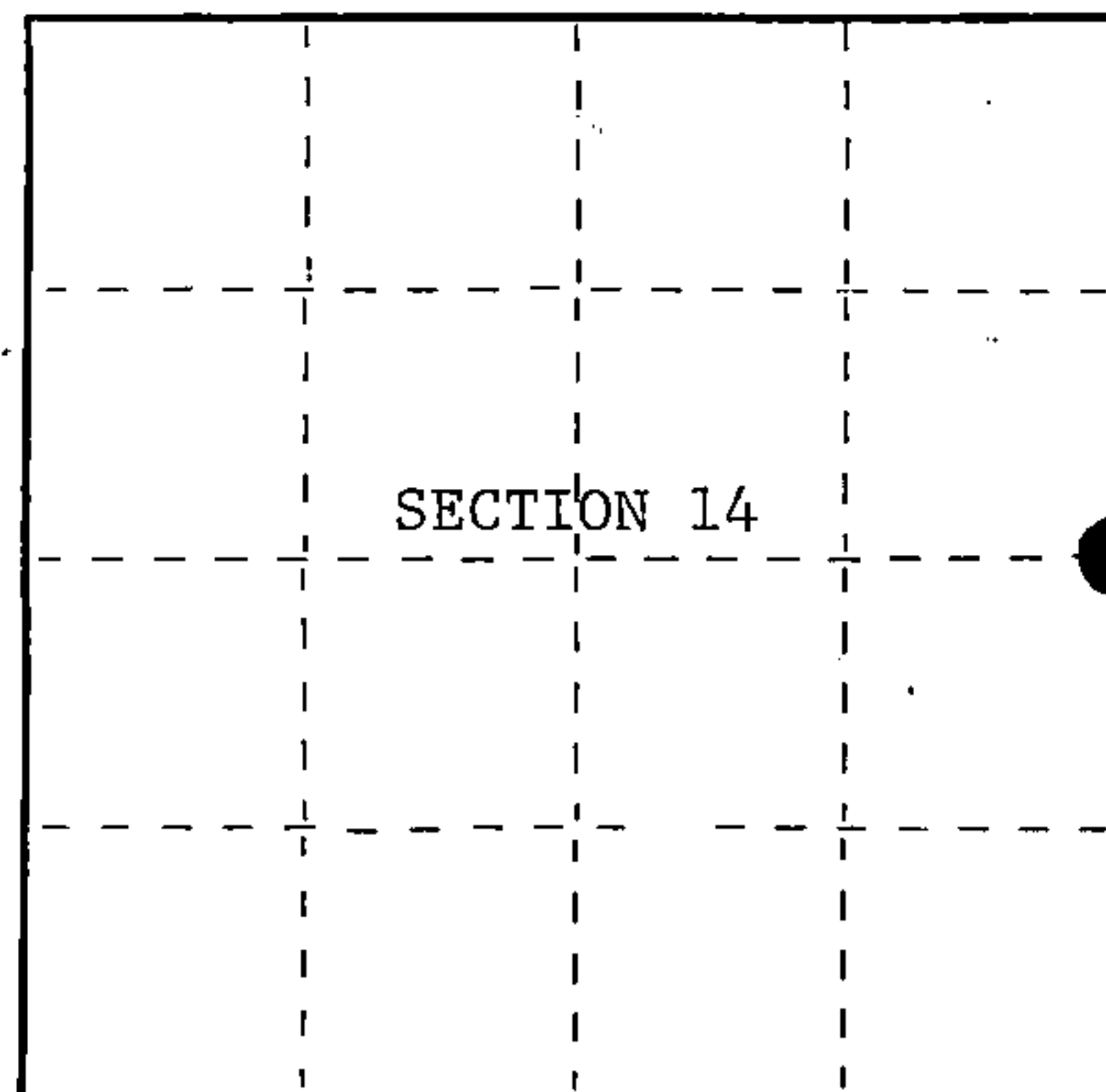
Dan Powers

Tony Tillman

State Plane Co-ordinates

N- 255,980.4258

E-2,332,312.1030



○ = Corner monument restored.

History of original corner establishment:

Original Government Survey in 1858 by Artemas Curtis.
See Certified Land Corner Restoration Certificate #109596, filed in the Registrar of
Deeds office, in the Forest County Courthouse.
In 1975, Jean Resvick, a Registered Land Surveyor with the U.S. Forest Service,
re-established the corner position at proportionate distance and on line between
opposing Section Corners, unaware of the survey work done by Melindy, a Local surveyor.

In 1929, Melindy found original bearing tree evidence and set a new post, from which
the following bear; Original Hemlock, N 6°30'W, 18 lks., Pine Stub, 48", S41°E, 35 1/3 lks.
In 1935, M. Hancock, a forester found a wood post in the NE corner of the field.
Description of corner evidence found:

Found monument as described and in place, from which the following bear;

Maple	9"	N33°E	76.28 feet
Maple	6"	N17°W	69.03 feet
Steel Sign Post		NE	1.00 feet

Found pine stub S41°E, 35 1/3 lks. from fence corner. (Melindy's reference)
Dan Powers, adjoining land owner testifies to Wood Post being in NE corner of field.
I accept the pine stub in concurrence with the fence corner as the best available
evidence for restoring the corner position.

The monument set by Resvick will be used as a Reference Monument.
Description of monument and accessories I established to perpetuate the original location of this corner.

At record bearing and distance from pine stub, set a 2½ inch diameter aluminum pipe
monument, 3 feet long, 2½ feet in the ground, with an aluminum cap stamped; T39N, R14E,
1/4, S13, S14, 1986, S-1107. From which the following new blazed and scribed bearing
trees bear;

Basswood	12"	N53°E	32.30 feet
Y. Birch	4"	S38°E	27.00 feet
Reference Monument		S50°W	98.29 feet
Steel Sign Post		NE	0.75 feet

Dated at Hiles, Wis., this 11th day of February, 1987.

Signature William B. Cochran Title Land Surveyor Registration No. S-1107
(County Surveyor, Registered Land Surveyor, or other duly authorized official)

Office of Register of Deeds, County of Forest, I hereby certify that the within
instrument was filed in this office for record on the 11th day of March, 1987
at 3:30 o'clock P. M.

Paul Aschenbrenner
(Register of Deeds)

By _____ Deputy

FORM NO. 985-A

H.C. Miller Company
PUBLISHER

Stock No. 26273

DOCUMENT NUMBER 132359

43914142000

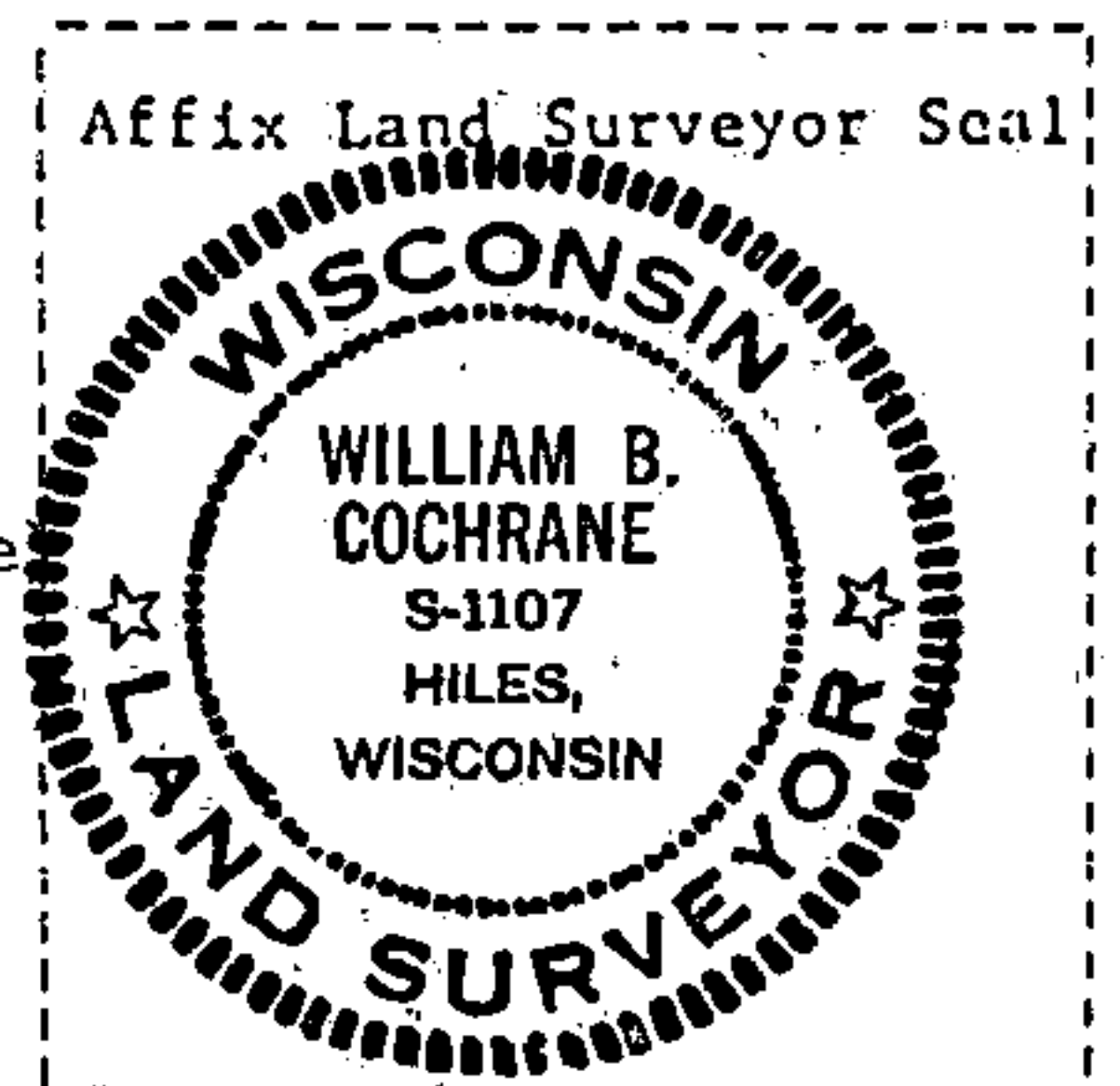
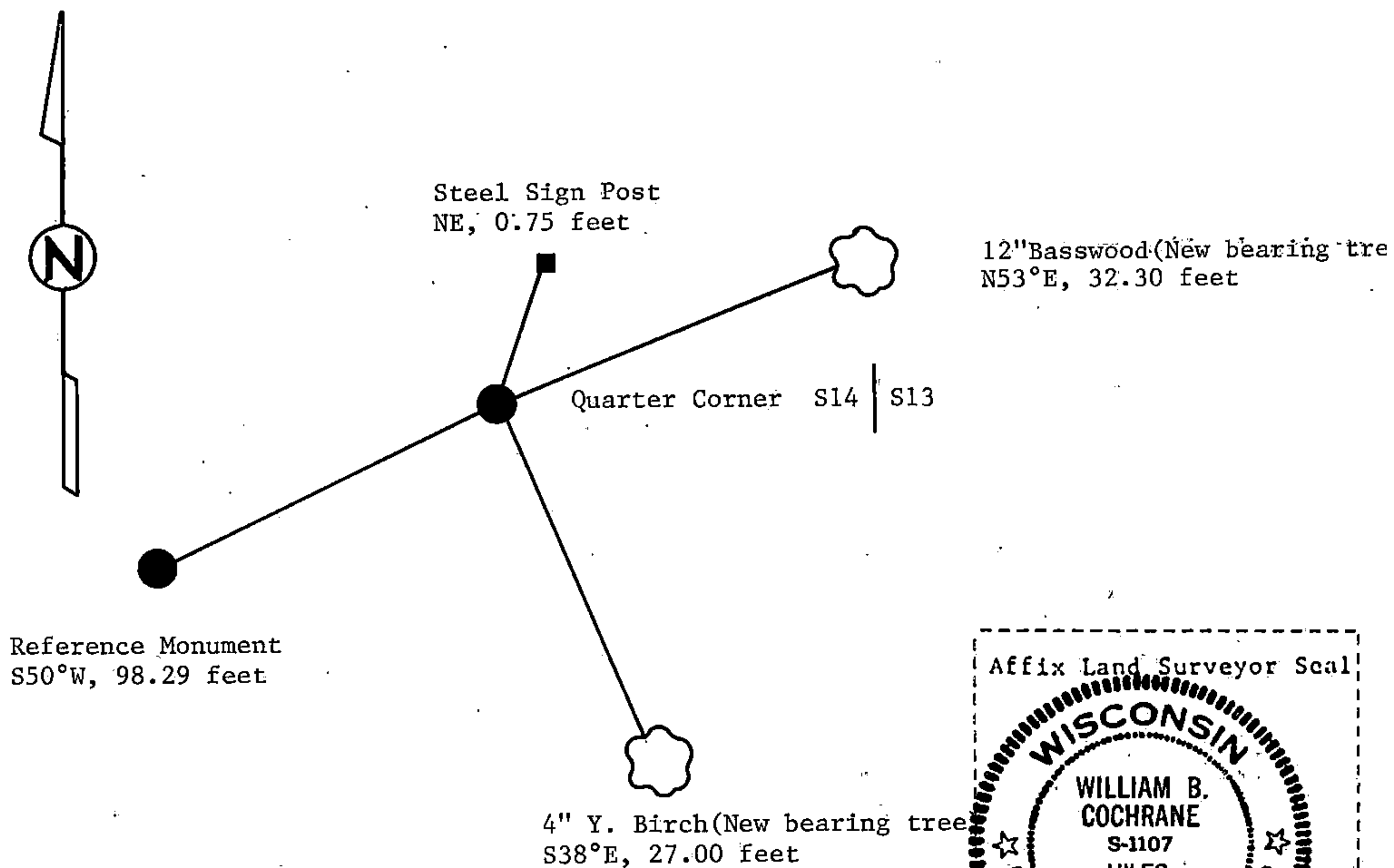
(e) Describe any material discrepancy between the location of the corner as restored or reestablished and the location of that corner as previously restored or reestablished by distance and direction. Show the discrepancy on the plan view drawing under (d), above. Show the distances between the corner as previously restored or reestablished and (1) the corner as restored or reestablished, and (2) to at least 2 of the witness monuments shown on the drawing in (d), above.

See drawing below.

(f) Was the corner restored through acceptance of (1) an obliterated evidence location, or, (2) a found perpetuated location?

Restored from accepted evidence.

(g&h) Was the corner reestablished through lost corner proportionate methods? If so, show the method, including the directions and distances to other public land survey corners used as evidence or used for proportioning in determining the corner location?



(i) 1. William B. Cochrane
(type or print name) certify that the corner location shown on this record was determined by me or under my direction and control and that this U.S. Public Land Survey Monument Record is correct and complete to the best of my knowledge and belief.

William B. Cochrane February 11, 1987
Signature Date

Survey requested by: [Signature] 3-9-87
District Ranger Date