

U.S. PUBLIC LAND SURVEY MONUMENT RECORD

Index No. J-19

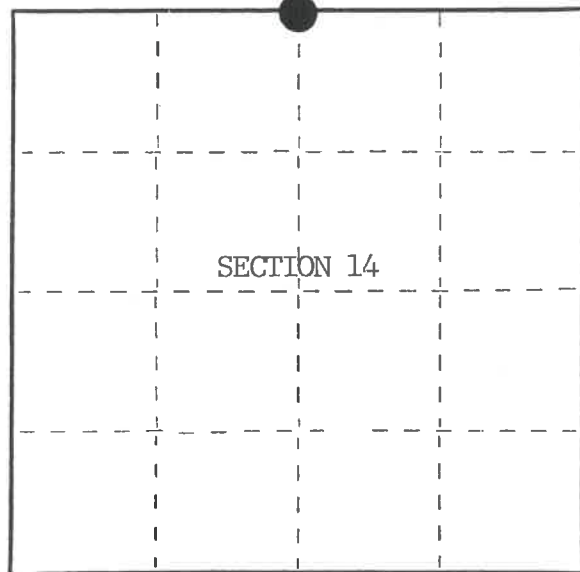
State of Wisconsin }
County of Forest } ss.

I, William B. Cochran, do hereby certify that on the 20th day of August, 1985, I found evidence of the North Quarter corner of Section 14 Township 39, North, Range 14 East, Fourth Principal Meridian, as described hereon; and that from this evidence I established a new monument and accessories as described hereon to perpetuate the original location of this corner.

Resident witnesses:

Tony Tillman
.....
.....
.....

State Plane Co-ordinates
N- 258,204.2247
E-2,329,668.5080



○ = Corner monument restored.

History of original corner establishment:

Original Government Survey in 1865 by William E. Daugherty and Alex McDill. West corrected between Sections 11 and 14, 40.04 chs., set Quarter Section Post to Sections 11 and 14, from which the following bear; Birch, 8", N50°W, 24 lks., Sugar, 10", S 9°E, 33 lks. In 1928, Melindy, a local Surveyor, sub-divided Section 14. At the corner position he found an original Sugar bearing tree, S 9°E, 33 lks. Set a new Cedar Post, 4"x4", from which the following bear;

Maple	16"	N18°W	66 7/8 lks.
Hemlock	24"	S 8°15'W	56 2/3 lks.
Maple	14"	S77°30'W	58 1/4 lks. Pine Stump, 36", N76°15'E, 72 1/8 lks.

Description of corner evidence found:

Found	Pine Stump	36"	N76°15'E	72 1/8 lks.
	Hemlock Stump		S 8°15'W	56 2/3 lks.
	Maple Stump	20"	S77°30'W	58 1/4 lks.
	Maple Stump		N18°00'W	66 7/8 lks.

I accept the bearing tree evidence as the best available evidence for restoring the corner position.

No original corner evidence was recovered.

Description of monument and accessories I established to perpetuate the original location of this corner.

From remains of bearing trees, set a 2½ inch diameter aluminum pipe monument, 3 feet long, 2½ feet in the ground, with an aluminum cap stamped; T39N, R14E, 1/4, S11, S14, 1985, S-1107. From which the following new blazed and scribed bearing trees bear;

W. Birch	12"	North	17.10 feet
Maple	8"	S54°E	16.38 feet
Steel Sign Post		NW	0.50 feet

Dated at Hiles, Wis., this 18th day of March, 1986

Signature William B. Cochran Title Land Surveyor Registration No. S-1107
(County Surveyor, Registered Land Surveyor, or other duly authorized official)

Office of Register of Deeds, County of Forest, I hereby certify that the within instrument was filed in this office for record on the 11th day of March, 1987 at 3:30 o'clock P. M.

Paul Aschenbrenner
(Register of Deeds)

By.....Deputy

FORM NO. 985-A



Stock No. 26273

DOCUMENT NUMBER 132350

439141 0020

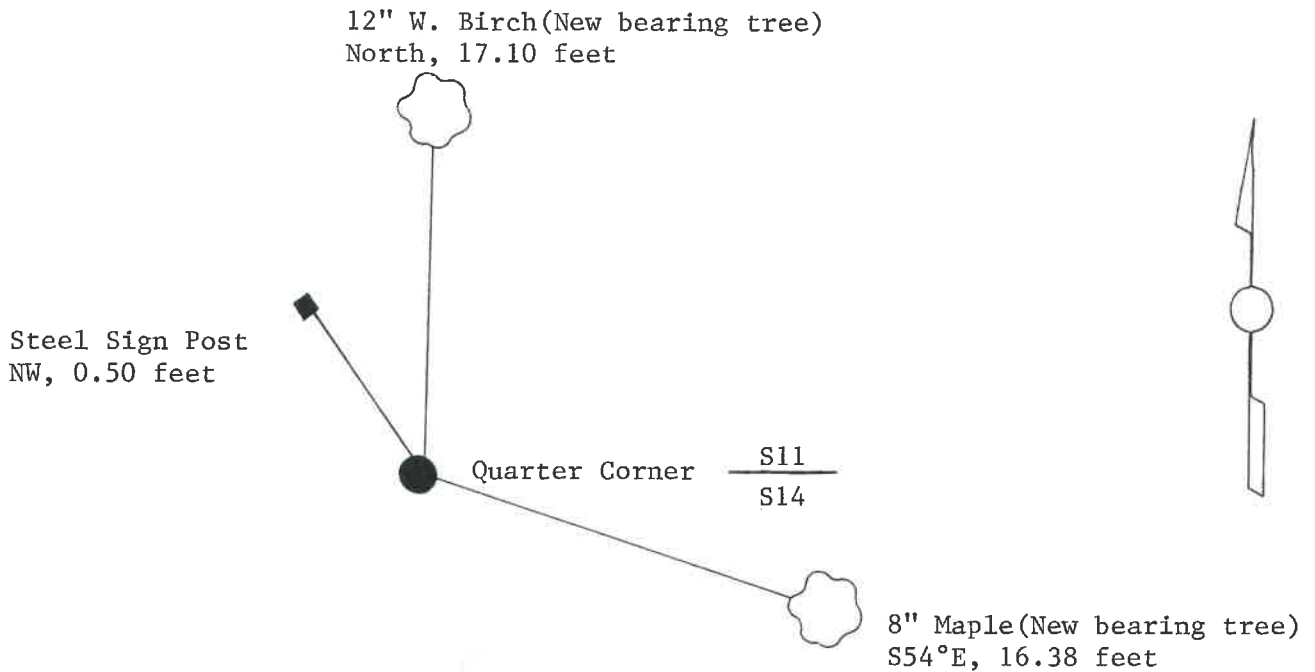
(e) Describe any material discrepancy between the location of the corner as restored or reestablished and the location of that corner as previously restored or reestablished by distance and direction. Show the discrepancy on the plan view drawing under (d), above. Show the distances between the corner as previously restored or reestablished and (1) the corner as restored or reestablished, and (2) to at least 2 of the witness monuments shown on the drawing in (d), above.

See drawing below.

(f) Was the corner restored through acceptance of (1) an obliterated evidence location, or, (2) a found perpetuated location?

Restored from accepted evidence.

(g&h) Was the corner reestablished through lost corner proportionate methods? If so, show the method, including the directions and distances to other public land survey corners used as evidence or used for proportioning in determining the corner location?



(i) I, William B. Cochrane
 (type or print name) certify that the corner location shown on this record was determined by me or under my direction and control and that this U.S. Public Land Survey Monument Record is correct and complete to the best of my knowledge and belief.

William B. Cochrane October 7, 1986
 Signature Date

Survey requested by: [Signature] 3-9-87
 District Ranger Date