

U.S. PUBLIC LAND SURVEY MONUMENT RECORD

Index No. G-13

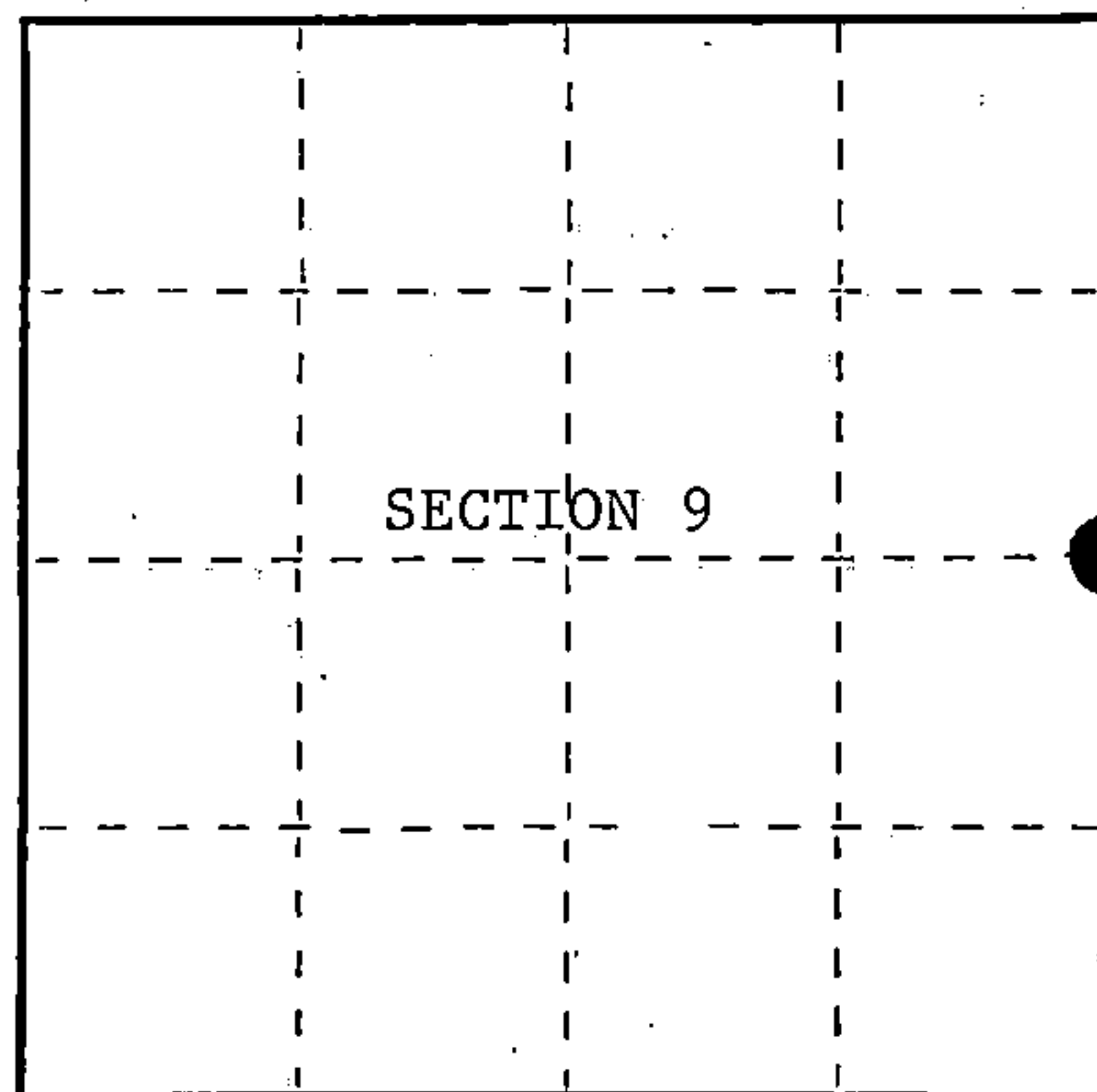
State of Wisconsin }
County of Forest } ss.

I William B. Cochrane, do hereby
certify that on the 25th day
of July, 1985, I found
evidence of the East Quarter
corner of Section 9
Township 39, North, Range
14 East, Fourth Principal Meridian,
as described hereon; and that from this evidence
I established a new monument and accessories
as described hereon to perpetuate the original
location of this corner.

Resident witnesses:

Tony Tillman

State Plane Co-ordinates
N- 260,764.3386
E-2,321,671.0650



○ = Corner monument restored.

History of original corner establishment:

Original Government Survey in 1865 by William E. Daugherty and Alex McDill.
North between Sections 9 and 10, at 40.00 chains, set Quarter Section Post
to Sections 9 and 10, from which the following bear;

Sugar	10"	S56°E	24 lks.
Spruce	10"	S57°E	37 lks.

Description of corner evidence found:

Found wood post lying on ground and point in ground; from which a 16" Spruce with
N-S blazes bears North 50 feet.

I accept the post point in concurrence with the N-S blazed line as the best
available evidence for restoring the corner position.

Description of monument and accessories I established to perpetuate the original location of this corner.

In place of post point, set a 2½ inch diameter aluminum pipe monument, 3 feet long,
2½ feet in the ground, with an aluminum cap stamped; T39N, R14E, 1/4, S9, S10,
1986, S-1107. From which the following new blazed and scribed bearing trees bear;

Cherry	10"	S41°E	55.31 feet
W. Birch	10"	N 3°W	59.94 feet
Steel Sign Post		NW	2.00 feet

Dated at Hiles, Wis., this 11th day of February, 1987

Signature William B. Cochrane Title Land Surveyor Registration No. S-1107
(County Surveyor, Registered Land Surveyor, or other duly authorized official)

Office of Register of Deeds, County of Forest
I hereby certify that the within
instrument was filed in this office for record on the 11th day of March, 1987
at 3:30 o'clock P. M.

Paul Aschenbrenner
(Register of Deeds)

By _____ Deputy

439 14009 2000

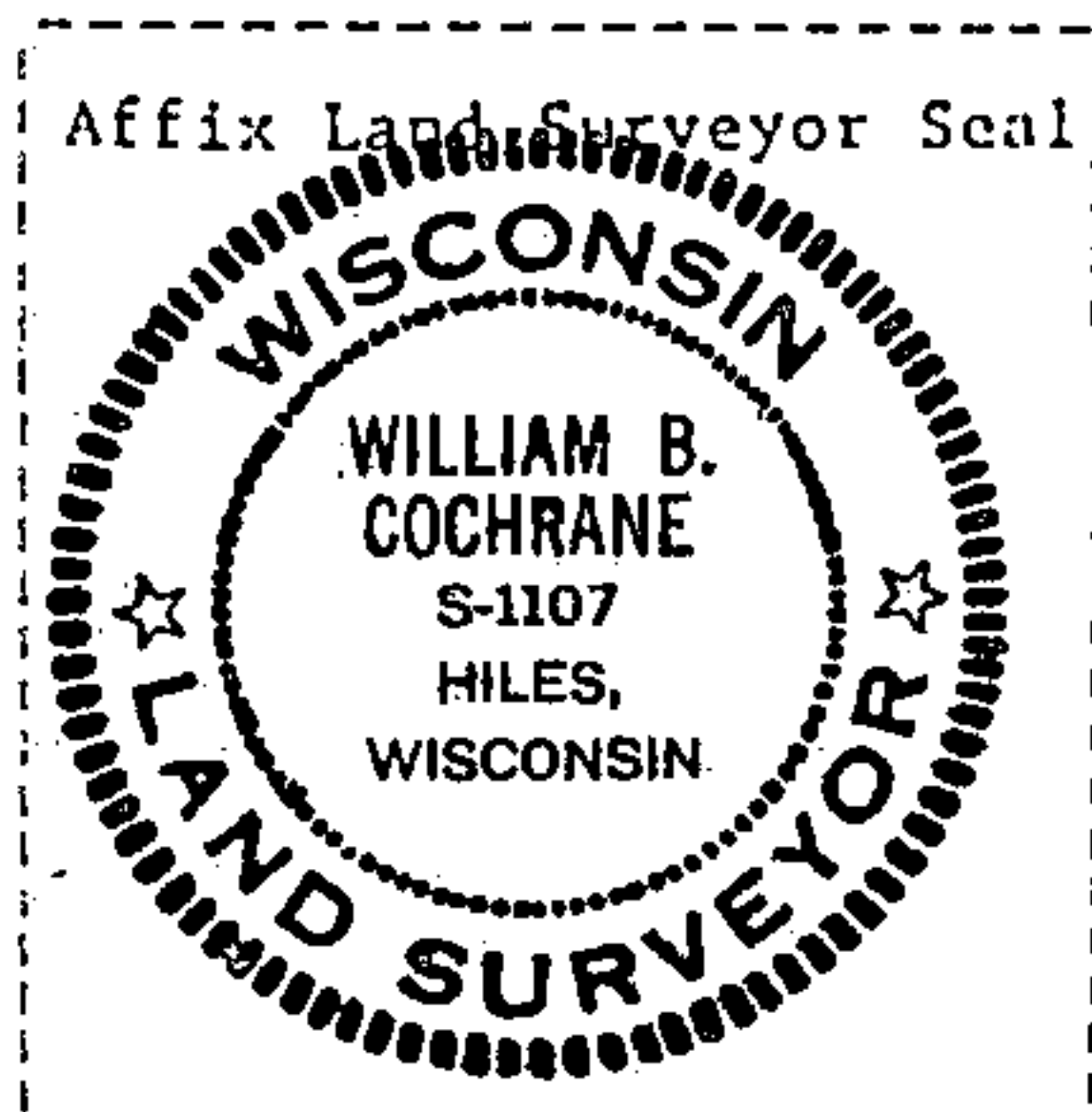
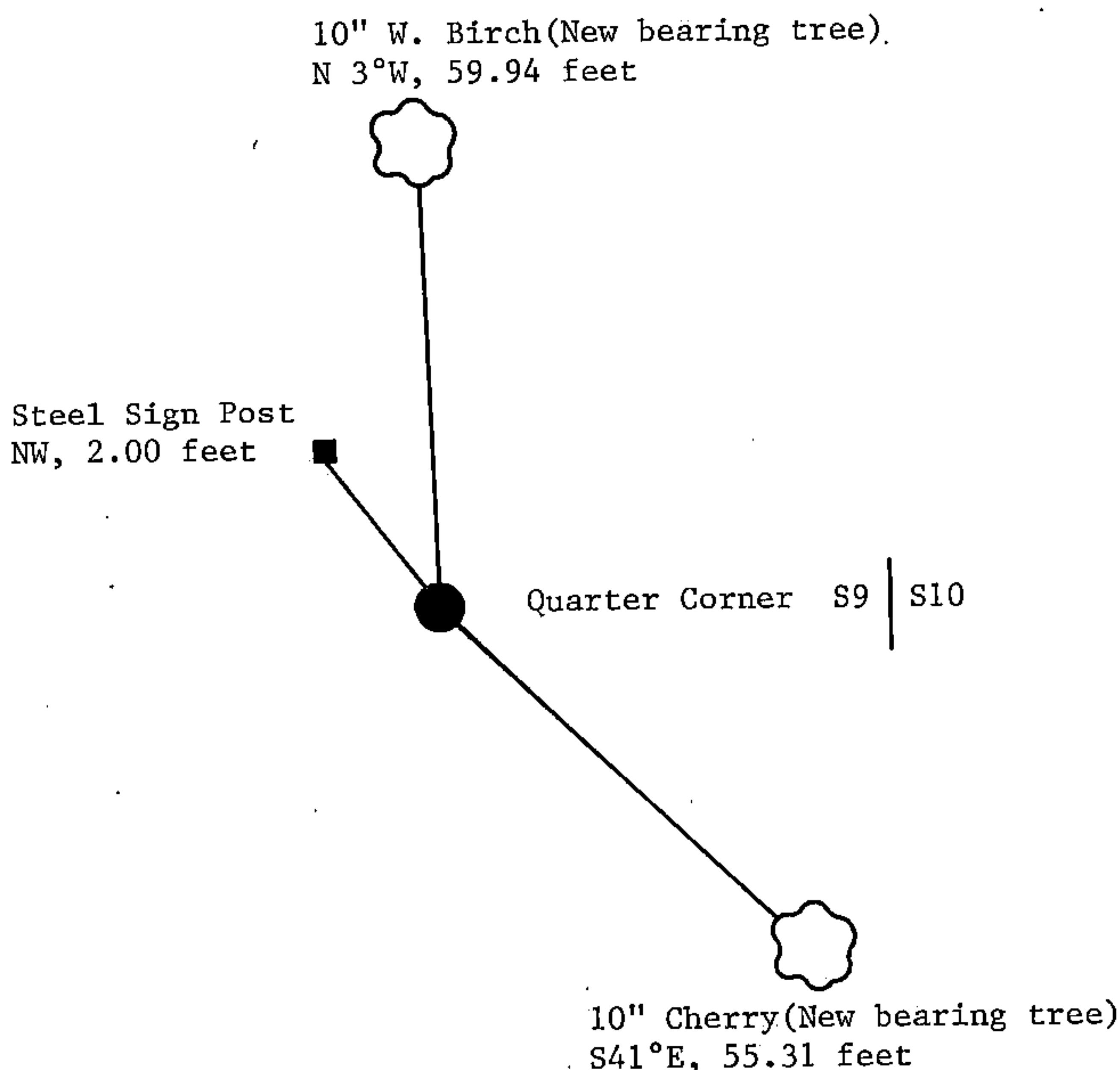
- (e) Describe any material discrepancy between the location of the corner as restored or reestablished and the location of that corner as previously restored or reestablished by distance and direction. Show the discrepancy on the plan view drawing under (d), above. Show the distances between the corner as previously restored or reestablished and (1) the corner as restored or reestablished, and (2) to at least 2 of the witness monuments shown on the drawing in (d), above.

See drawing below

- (f) Was the corner restored through acceptance of (1) an obliterated evidence location, or, (2) a found perpetuated location?

Restored from accepted evidence.

- (g&h) Was the corner reestablished through lost corner proportionate methods? If so, show the method, including the directions and distances to other public land survey corners used as evidence or used for proportioning in determining the corner location?



- (i) I, William B. Cochrane
(type or print name) certify that the corner location shown on this record was determined by me or under my direction and control and that this U.S. Public Land Survey Monument Record is correct and complete to the best of my knowledge and belief.

William B. Cochrane February 11, 1987
Signature Date

Survey requested by: Edward A. [Signature] 3-9-87
District Ranger Date