

CERTIFIED LAND CORNER ~~RESTORATION~~ LOCATION

State of Wisconsin }
County of Forest } ss.

I William B. Cochrane, do hereby certify that on the 7 day of June, 1977, I found evidence of the established the North Sixteenth corner of between Section 8 and 9 Township 39 North, Range 14 East, Fourth Principal Meridian, as described hereon; and that from this evidence I established a new monument and accessories as described hereon to perpetuate the original location of this corner:

Description of original monument and accessories and subsequent restorations:

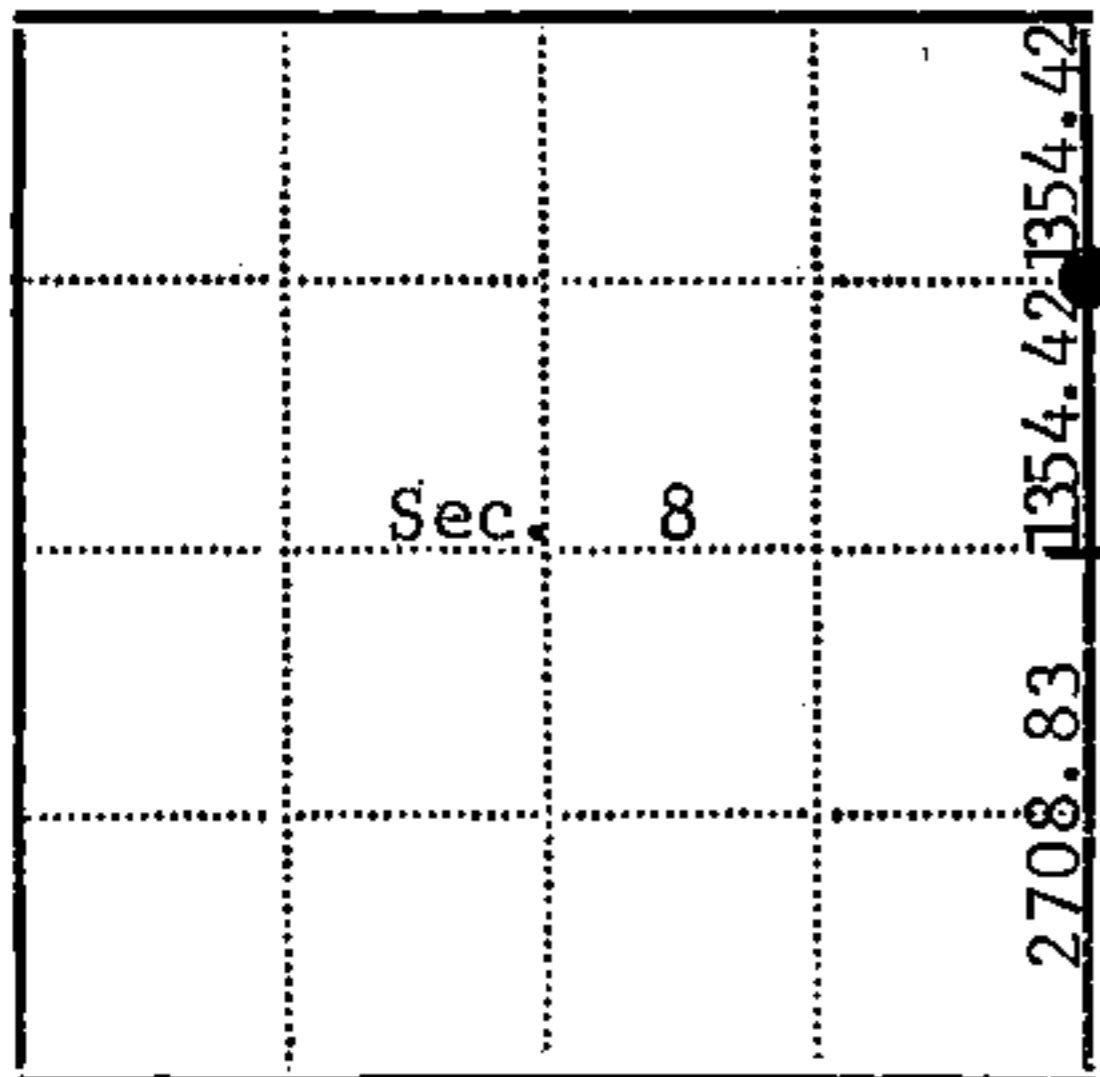
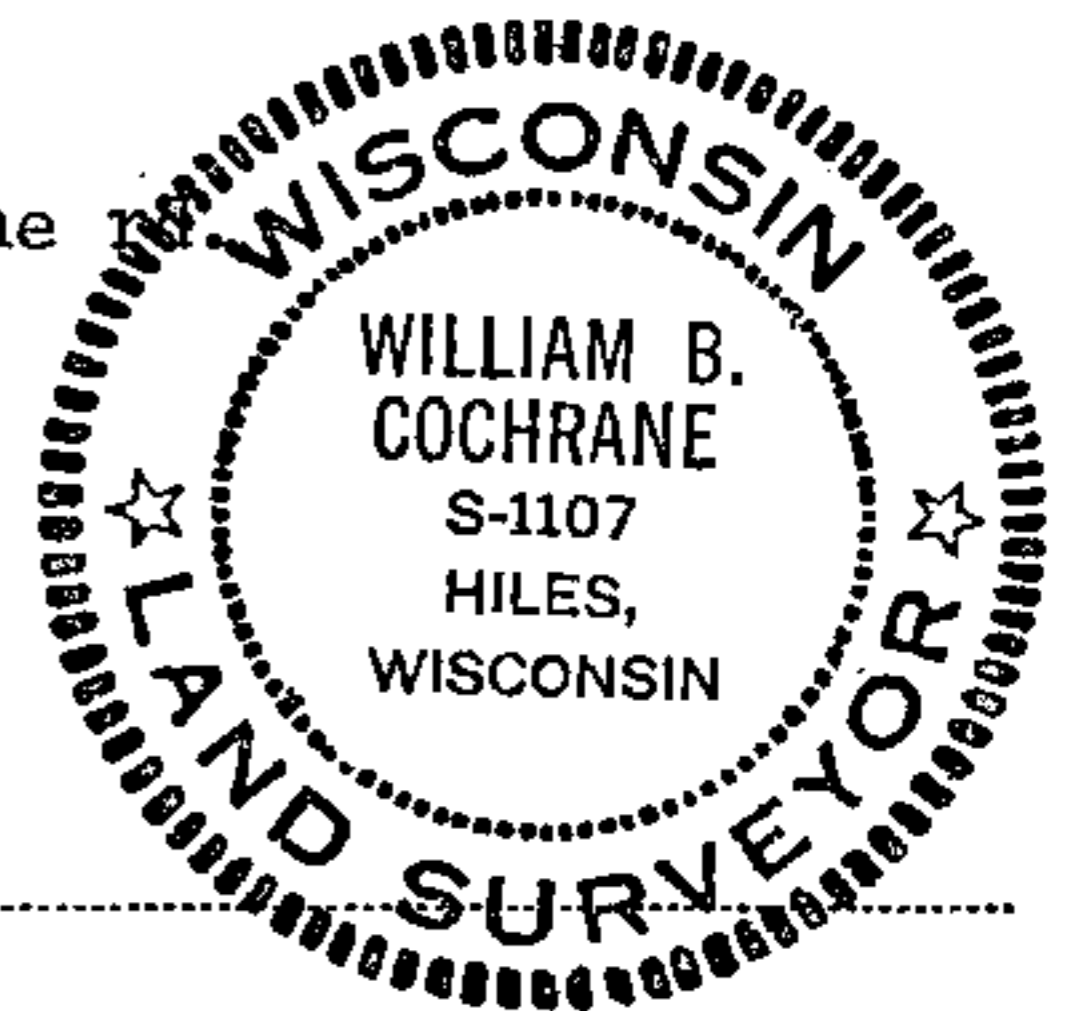
None

Description of corner evidence found:

Established North one Sixteenth corner between Sections 8 and 9 on line and at midpoint between the East 1/4 corner Section 8 and the Northeast section corner of Section 8.
Northeast section corner of Section 8 bears N2°38'34"E, 1354.42 feet
East quarter corner of Section 8 bears S2°38'34"W, 1354.42 feet

Description of monument and accessories I established to perpetuate the location of this corner:

At corner position set a 2 inch inside diameter, galvanized iron pipe, 3 feet long, filled with concrete with brass cap stamped: T39N, R14E, N 1/16, S8, S9, 1977, S-1107. Blazed and scribed the following bearing trees
Aspen 9, N22E, 16.46 ft.
White spruce 17, N87E, 62.40 ft.
Black spruce 8, N83W, 69.60 ft.
Set steel sign post East 0.2 ft. from monument
Monument set 10 inches below ground level, 7 feet east of center line



● - Corner monument restored
□ -

Resident witnesses.....

Dated at Laona, Wisconsin, this 9 day of August, 1977.

Signature William B. Cochrane Title Survey Technician
(County Surveyor, Registered Land Surveyor, or other duly authorized official)

Surveyors Registration No. S-1107 DOCUMENT NUMBER 113308

Office of Register of Deeds County of Forest

I hereby certify that the within instrument was filed in this office for record on the 13th day of February, 1978, and was filed in Book No. Page No. of County Records.

Signature Eugene Statyns Title Register of Deeds

Township 39 North, Range 14 East, Section 8, Index No. E-9, Page No.

43914083000

7
6