

U.S. PUBLIC LAND SURVEY MONUMENT RECORD

Index No. J-7

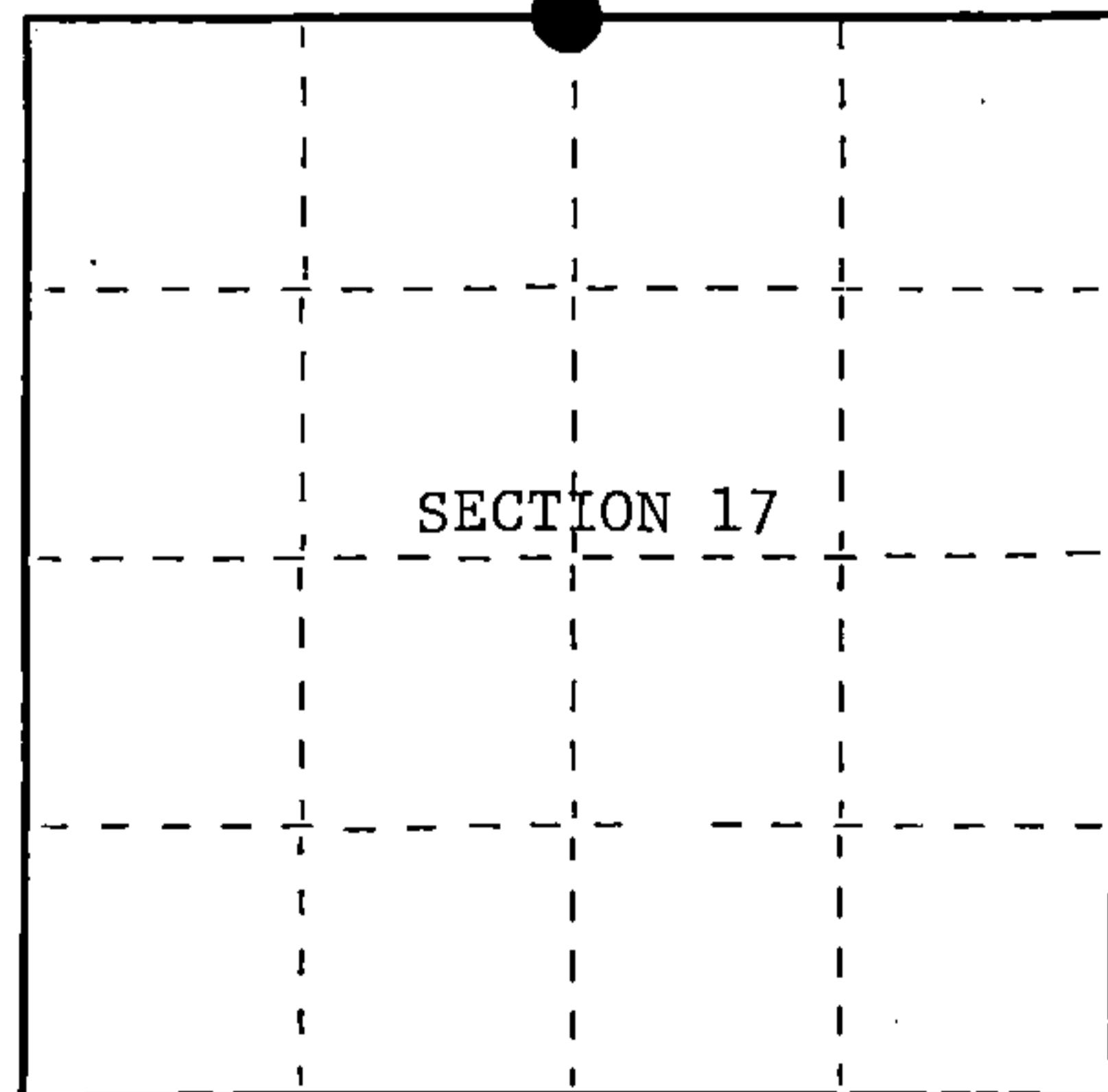
State of Wisconsin }  
County of Forest } ss.

I, William B. Cochrane, do hereby certify that on the 1st day of August, 1985, I found evidence of the North Quarter corner of Section 17 Township 39 North, Range 14 East, Fourth Principal Meridian, as described hereon; and that from this evidence I established a new monument and accessories as described hereon to perpetuate the original location of this corner.

Resident witnesses:

Tony Tillman

State Plane Co-ordinates  
N- 257,850.9219  
E-2,313,847.5280



○ = Corner monument restored.

History of original corner establishment:

Original Government Survey in 1865 by William E. Daugherty and Alex McDill. West corrected between Sections 8 and 17, at 40.46 chains, set Quarter Section Post to Sections 8 and 17, from which the following bear;

|       |     |       |         |
|-------|-----|-------|---------|
| Birch | 12" | N21°E | 60 lks. |
| Fir   | 10" | S56°E | 17 lks. |

Description of corner evidence found:

No corner evidence was recovered.

The corner position is re-established at proportionate distance and on line between the Northeast and Northwest Section Corners of Section 17.

Description of monument and accessories I established to perpetuate the original location of this corner.

At the corner position, set a 2½ inch diameter aluminum pipe monument, 3 feet long, 2½ feet in the ground, with an aluminum cap stamped; T39N, R14E, 1/4, S8, S17, 1986, S-1107. From which the following new blazed and scribed bearing trees bear;

|                 |    |       |            |
|-----------------|----|-------|------------|
| Aspen           | 9" | S11°W | 47.15 feet |
| Balsam          | 9" | N84°W | 84.56 feet |
| Steel Sign Post |    | NW    | 1.00 feet  |

Dated at Hiles, Wis., this 11th day of February, 1987

Signature: *William B. Cochrane* Title: Land Surveyor Registration No. S-1107  
(County Surveyor, Registered Land Surveyor, or other duly authorized official)

Office of Register of Deeds, County of Forest, I hereby certify that the within instrument was filed in this office for record on the 11th day of March, 1987, at 3:30 o'clock P. M.

*Paul Aschenbrenner*  
(Register of Deeds)

By \_\_\_\_\_ Deputy

FORM NO. 985-A

H.C. Miller Company

Stock No. 26273

DOCUMENT NUMBER 132344

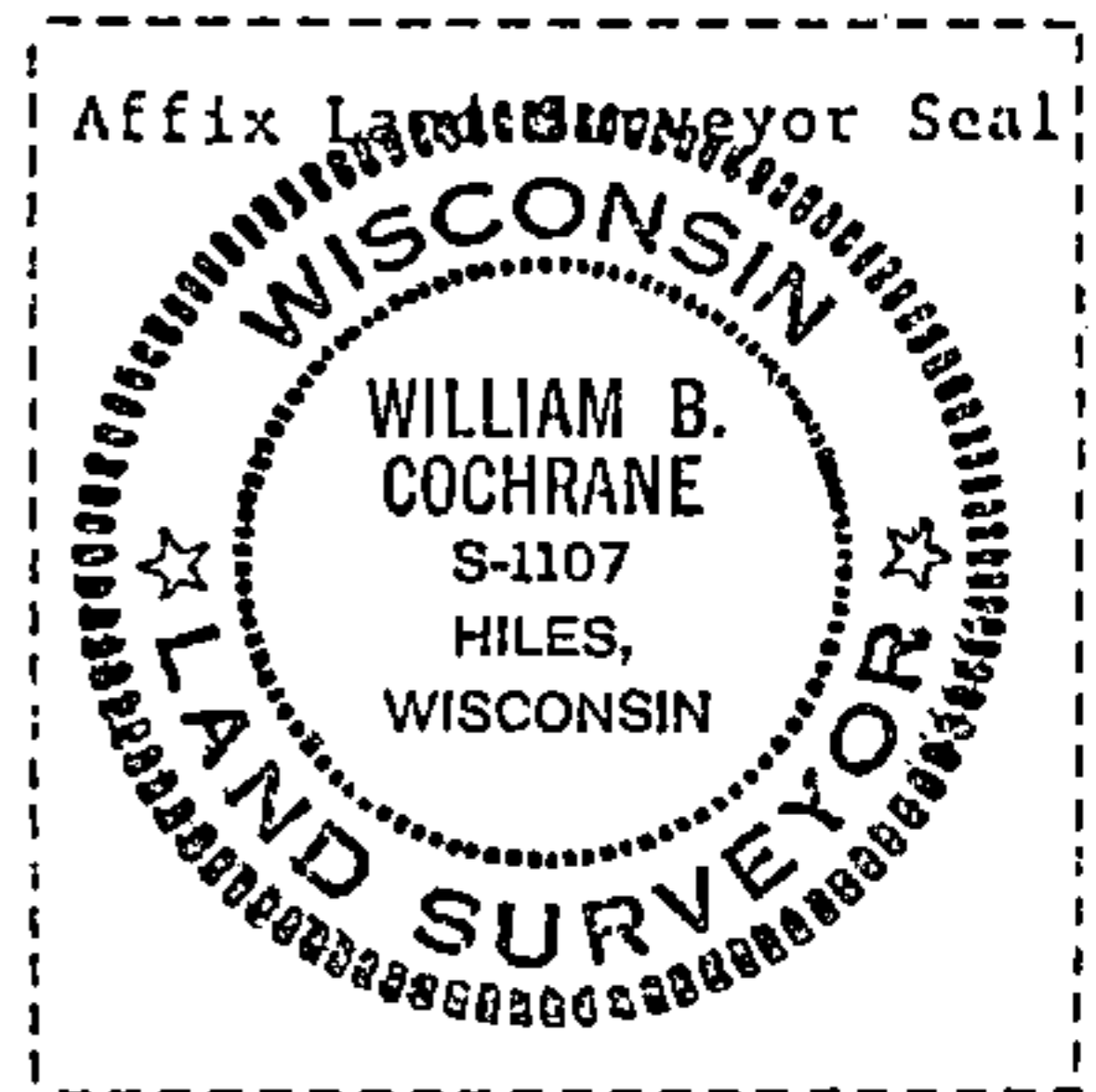
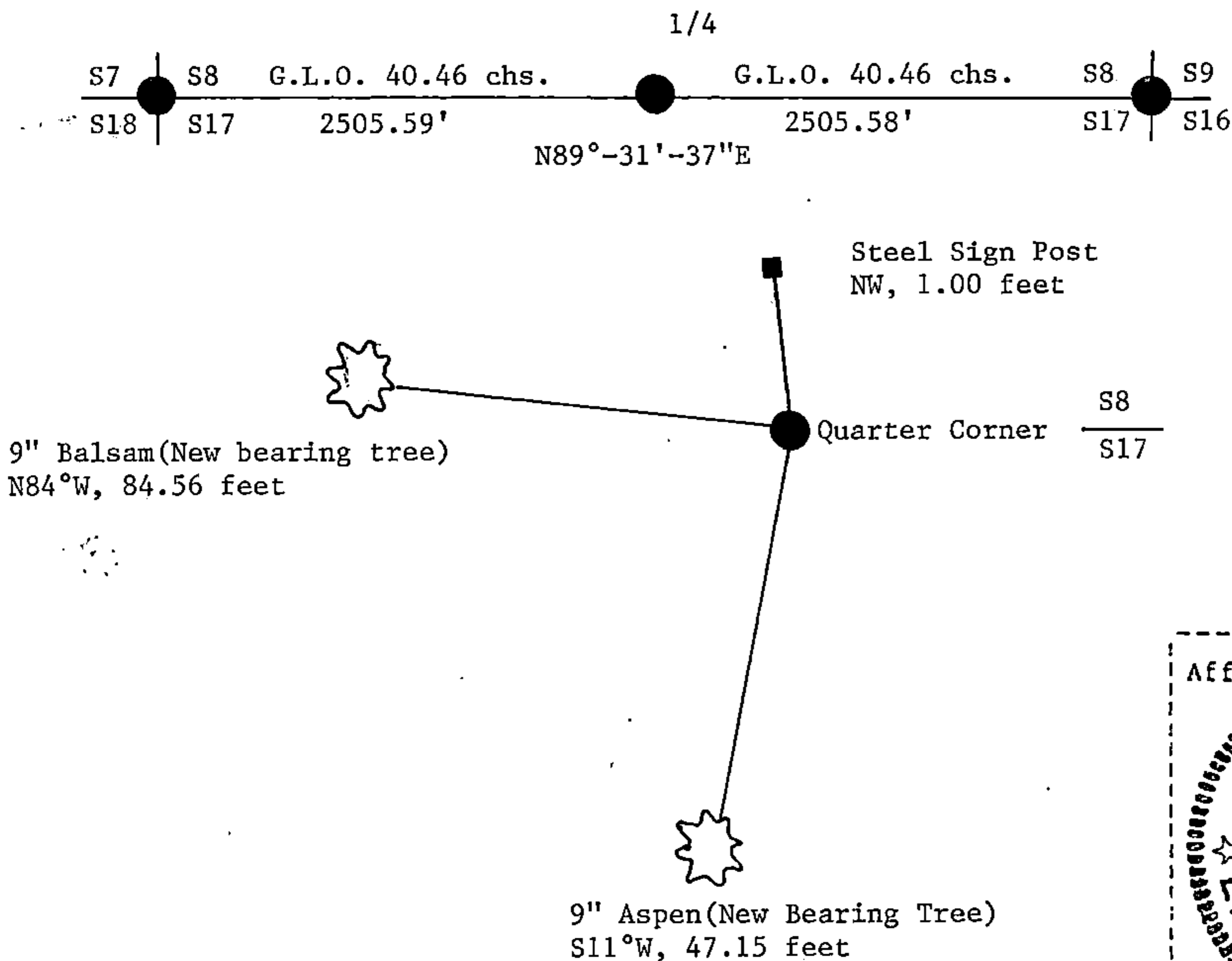
43914080020

(e) Describe any material discrepancy between the location of the corner as restored or reestablished and the location of that corner as previously restored or reestablished by distance and direction. Show the discrepancy on the plan view drawing under (d), above. Show the distances between the corner as previously restored or reestablished and (1) the corner as restored or reestablished, and (2) to at least 2 of the witness monuments shown on the drawing in (d), above.

See drawing below.

(f) Was the corner restored through acceptance of (1) an obliterated evidence location, or, (2) a found perpetuated location?

(g&h) Was the corner reestablished through lost corner proportionate methods? If so, show the method, including the directions and distances to other public land survey corners used as evidence or used for proportioning in determining the corner location?  
 This corner position was re-established using State Plane Co-ordinates computed from Aerial Photography and a Global Positioning Satellite Survey. The computed corner position was located in the field using a North Seeking Gyro, an Electronic Distance Meter, and/or a steel tape.



(i) I, William B. Cochrane (type or print name) certify that the corner location shown on this record was determined by me or under my direction and control and that this U.S. Public Land Survey Monument Record is correct and complete to the best of my knowledge and belief.

William B. Cochrane Signature      February 11, 1987 Date

Survey requested by: Edward [Signature]      3-9-87 Date  
 District Ranger