

CERTIFIED LAND CORNER RESTORATION

State of Wisconsin }
County of Forest } ss.

I William B. Cochrane, do hereby certify that on the 28th day of May, 1974, I found evidence of the Southeast corner of Section 8 Township 39 North, Range 14 East, Fourth Principal Meridian, as described hereon; and that from this evidence I established a new monument and accessories as described hereon to perpetuate the original location of this corner:

Description of original monument and accessories and subsequent restorations:

Surveyed by Wm. E. Daugherty and Alex McDill in April and May, 1865. North between sections 16 and 17. 80.00 chains set post corner to sections 8, 9, 16 & 17. Ironwood 10", N.72°E., 17 lks. Cedar, 12", S.81°W., 50 lks. 41.86 chains east, stream, 100 links wide, runs NE. 12.57 chains south, stream 100 links wide, runs East 8 links north cedar 14"

Description of corner evidence found:

4" x 4" cedar post in place. Two older posts alongside. South 12.5 chains Pine River, runs East North, 8 links, cedar blow down blazed. East, 41.5 chains, Pine River, runs NE.

Description of monument and accessories I established to perpetuate the location of this corner:

On August 18, 1976, I replaced the post with a 2 inch inside diameter galvanized pipe, 3 feet long, filled with concrete with a brass cap stamped:

T39N, R14E, S8, S9, S16, S17, 1976, S-1107

From which the following bear:

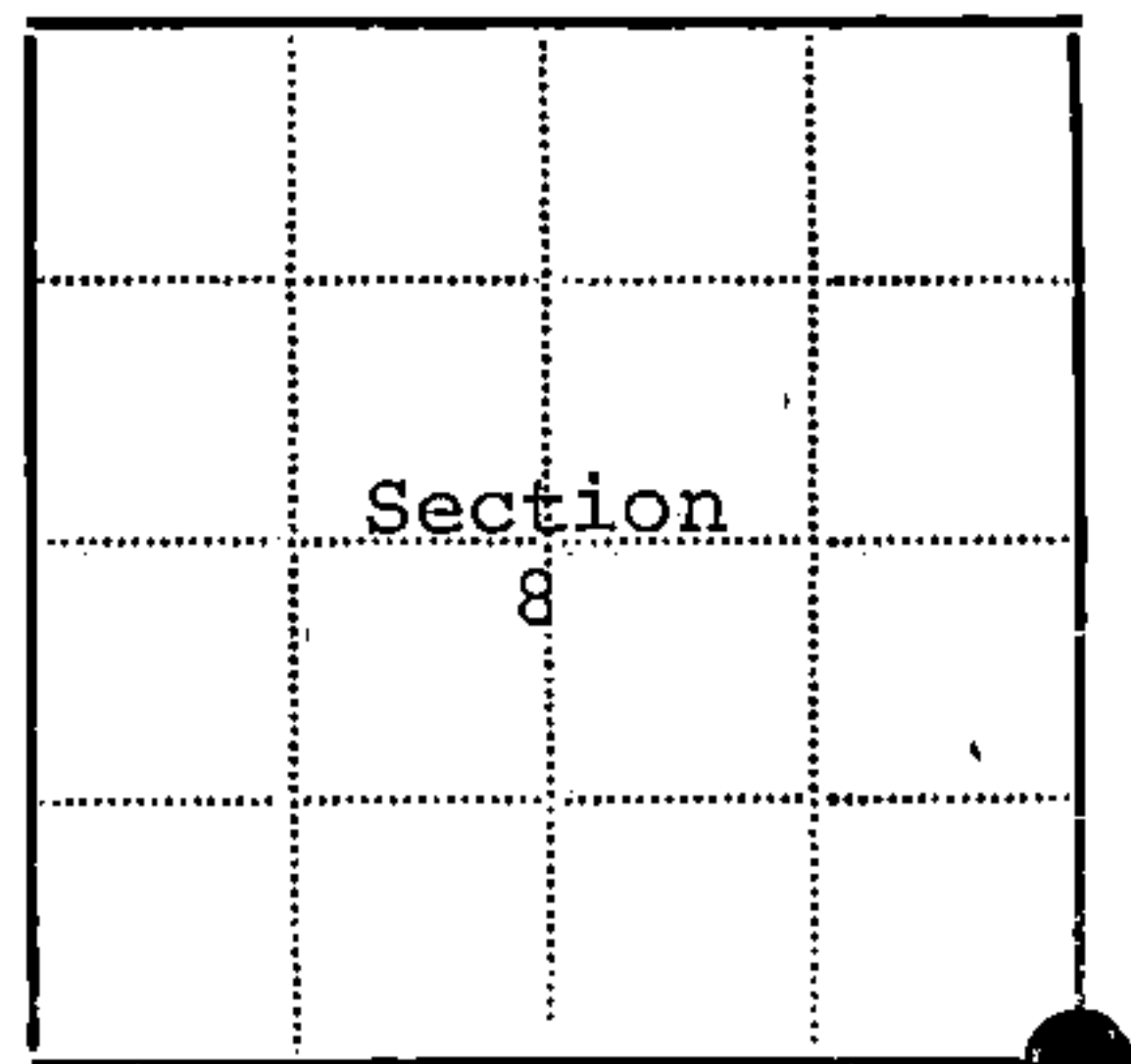
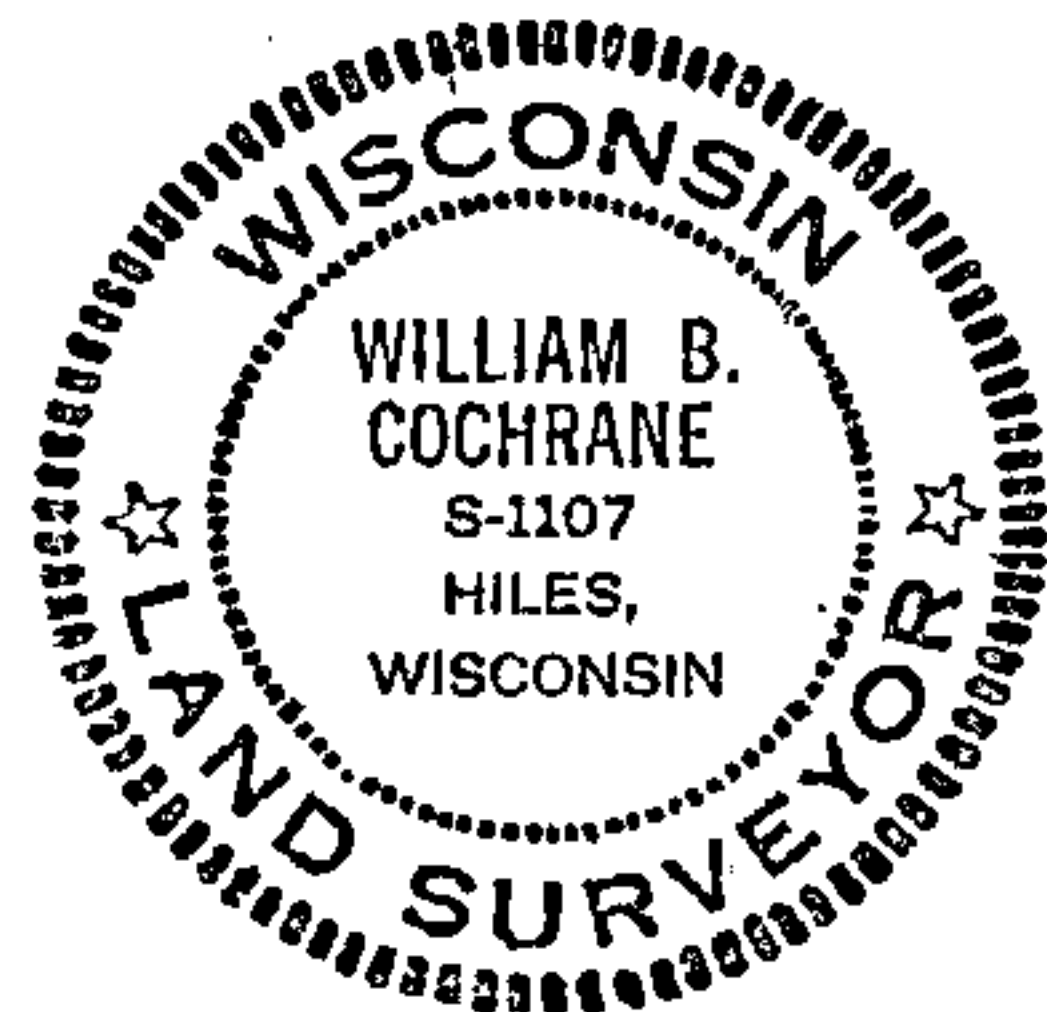
Yellow Birch, 8", N.58°E., 34.23 feet

Cedar, 11", S.48°E., 62.18 feet

Elm, 8", S.8°W, 20.47 feet

Maple, 7", N.51°W., 22.76 feet

Set a steel sign post NW of the monument, 0.50 feet



● - Corner monument restored
□ -

Resident witnesses.....

Dated at Laona Wisconsin, this 6 day of October 1976.

Signature William B. Cochrane Title Survey Technician
(County Surveyor, Registered Land Surveyor, or other duly authorized official)

Surveyors Registration No. S-1107 DOCUMENT NUMBER 110924

Office of Register of Deeds County of Forest

I hereby certify that the within instrument was filed in this office for record on the 31st day of January 1977, and was filed in Book No. Page No. of County Records.

Signature Eugene Staszynski Title Register of Deeds

Township 39 North, Range 14 East, Section 8, Index No. J-9, Page No.

43914 080000

6

U.S. PUBLIC LAND SURVEY MONUMENT RECORD

Index No. J-9

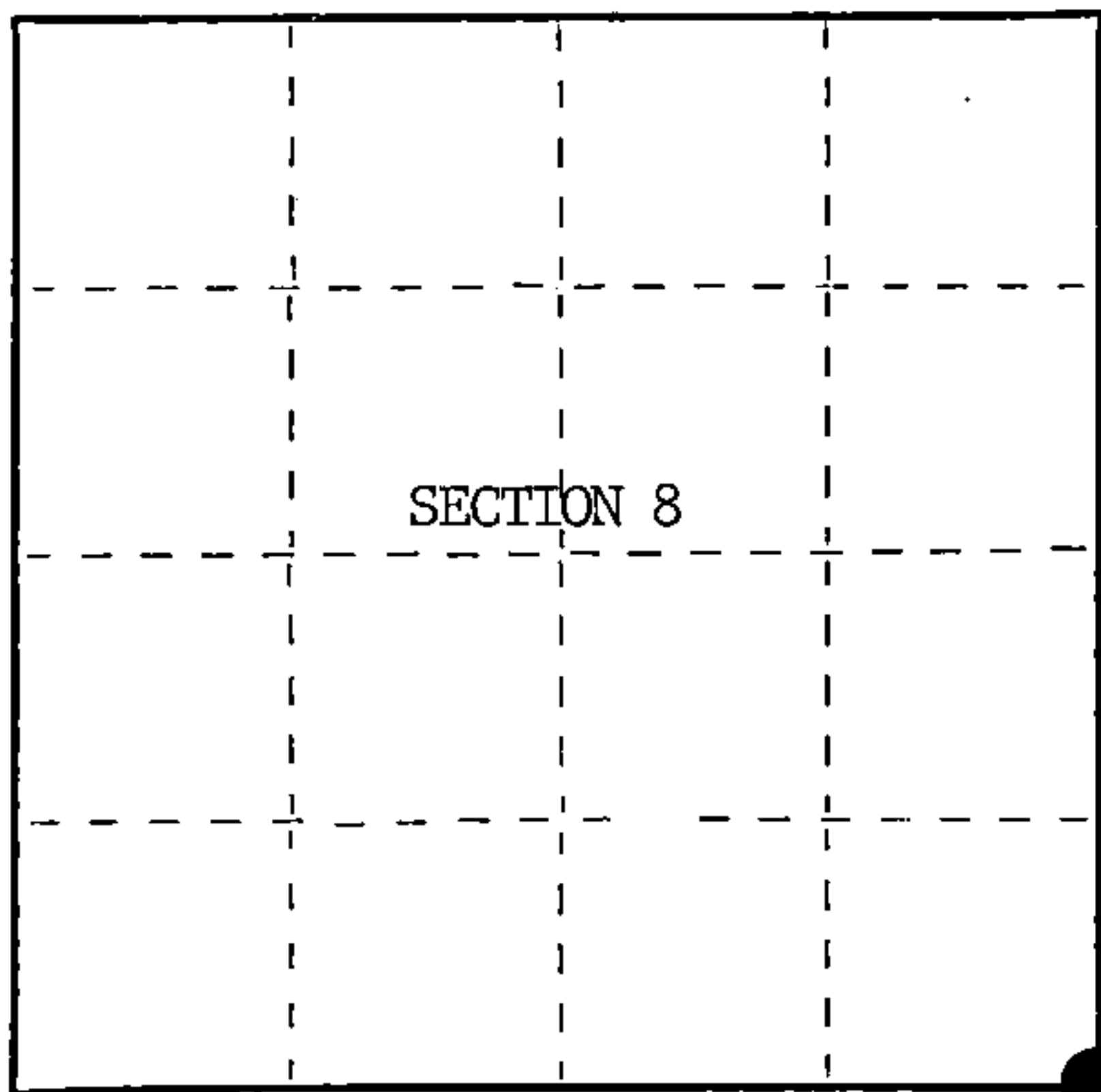
State of Wisconsin } ss.
County of Forest

I, William B. Cochran, do hereby certify that on the 5th day of August, 1985, I found evidence of the Southeast Section corner of Section 8 Township 39 North, Range 14 East, Fourth Principal Meridian, as described hereon; and that from this evidence I established a new monument and accessories as described hereon to perpetuate the original location of this corner.

Resident witnesses:

Tony Tillman

State Plane Co-ordinates
N- 257,871.6100
E-2,316,353.0220



○ = Corner monument restored.

History of original corner establishment:

Original Government Survey in 1865 by William E. Daugherty and Alex McDill.

Corner restored on August 18th, 1976, by William B. Cochran, a Registered Land Surveyor with the U.S. Forest Service.

See Certified Land Corner Restoration Certificate #110924, filed in the Registrar of Deeds Office, in the Forest County Courthouse.

Description of corner evidence found:

Found monument as described and in place, from which the following bear;

Y. Birch(Down)		N58°E	34.23 feet
Cedar	12"	S48°E	62.18 feet
Elm(Dead)	8"	S 8°W	20.47 feet
Maple	8"	N51°W	22.76 feet
Steel Sign Post		NW	0.50 feet

Description of monument and accessories I established to perpetuate the original location of this corner.

Blazed and scribed the following new bearing trees;

Aspen	4"	S 5°W	36.81 feet
Maple	8"	N73°E	48.51 feet

Dated at Hiles, Wis., this 6th day of February, 1986

Signature William B. Cochran Title Land Surveyor Registration No. S-1107
(County Surveyor, Registered Land Surveyor, or other duly authorized official)

Office of Register of Deeds, County of Forest, I hereby certify that the within instrument was filed in this office for record on the 11th day of March, 1987 at 3:30 o'clock P. M.

Paul Aschentrener
(Register of Deeds)

By Deputy

FORM NO. 985-A

H.C. Miller Company

Stock No. 26273

DOCUMENT NUMBER 132345

43914080000

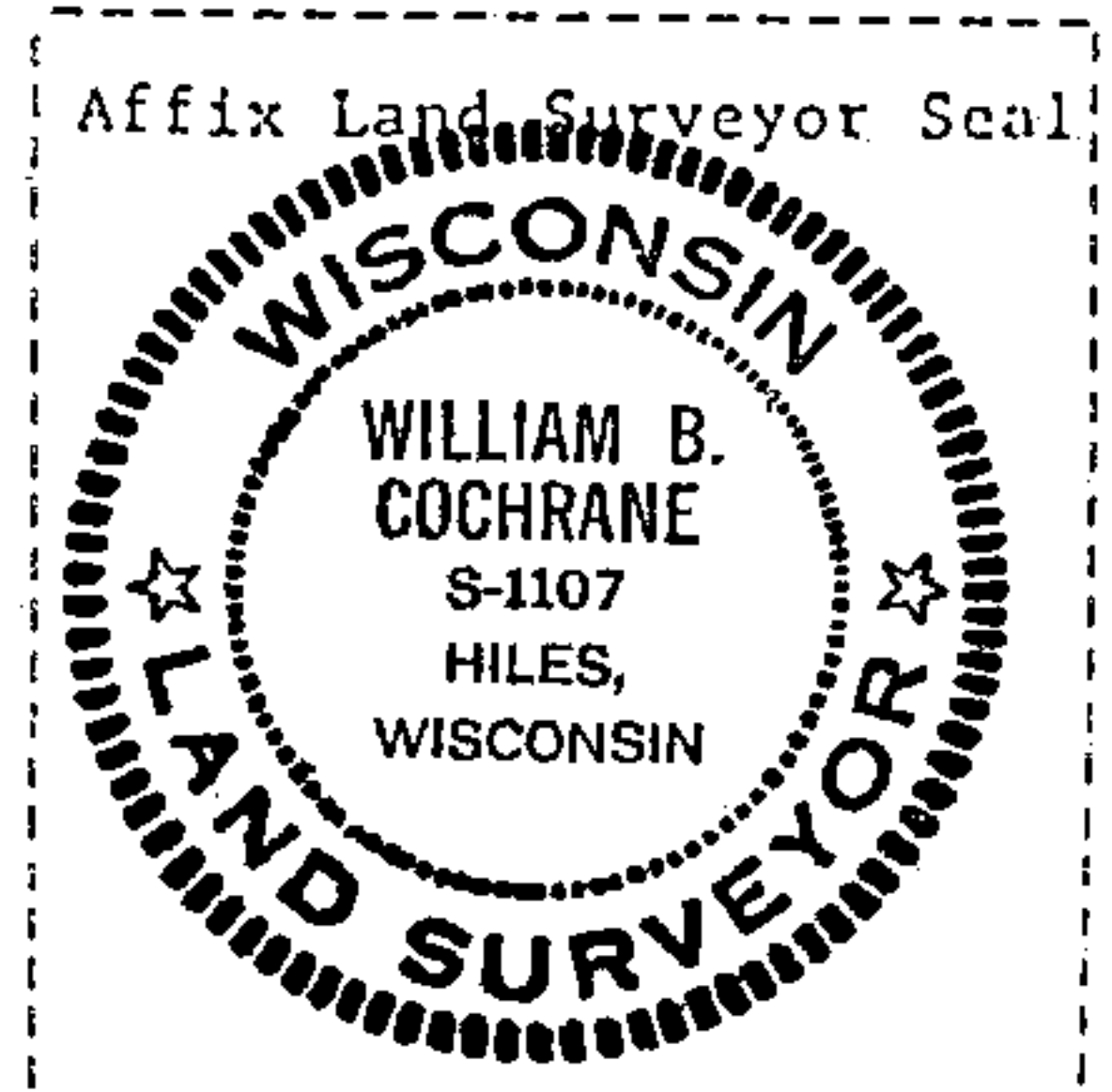
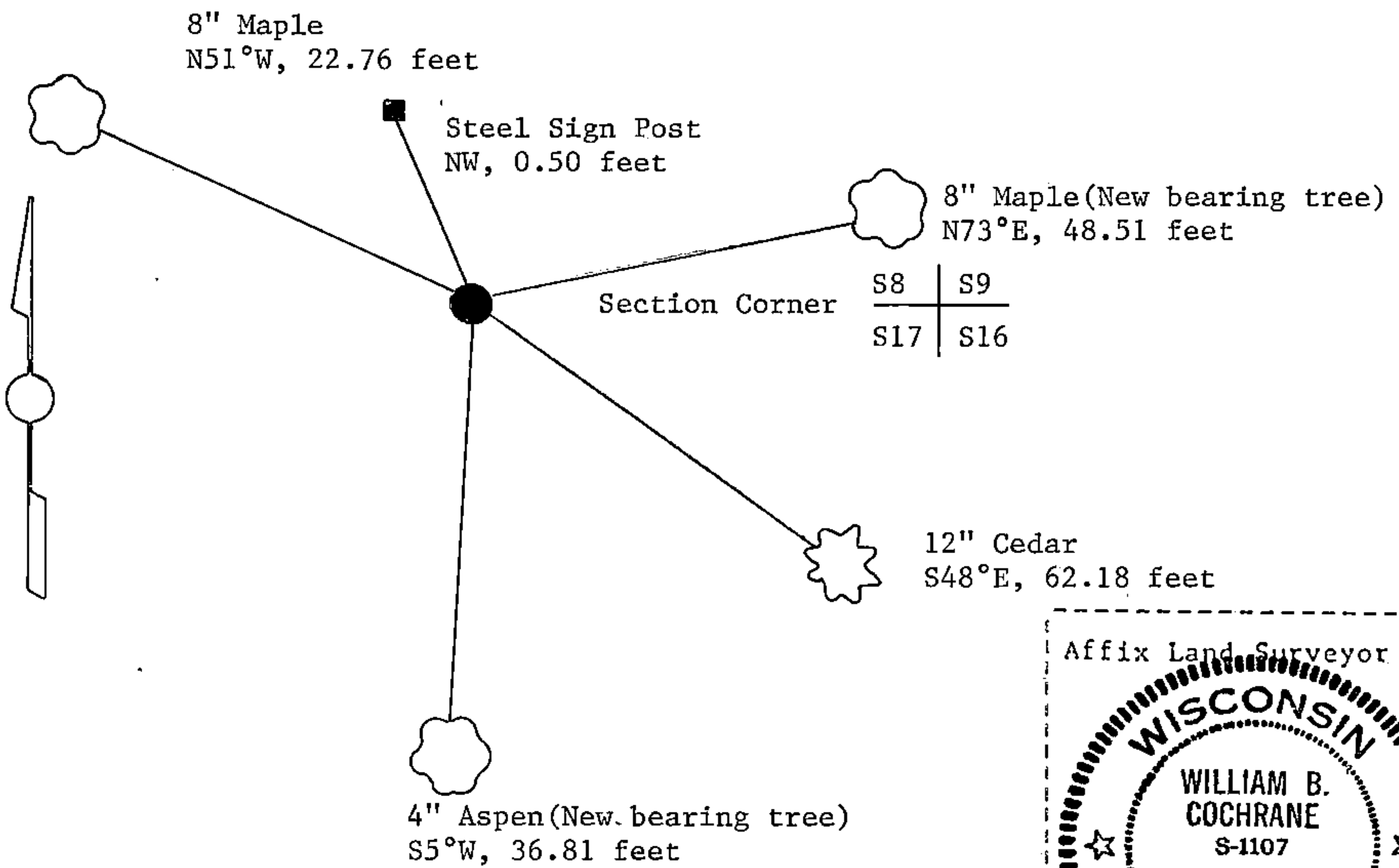
(e) Describe any material discrepancy between the location of the corner as restored or reestablished and the location of that corner as previously restored or reestablished by distance and direction. Show the discrepancy on the plan view drawing under (d), above. Show the distances between the corner as previously restored or reestablished and (1) the corner as restored or reestablished, and (2) to at least 2 of the witness monuments shown on the drawing in (d), above.

See drawing below.

(f) Was the corner restored through acceptance of (1) an obliterated evidence location, or, (2) a found perpetuated location?

Restored through acceptance of a found perpetuated location.

(g&h) Was the corner reestablished through lost corner proportionate methods? If so, show the method, including the directions and distances to other public land survey corners used as evidence or used for proportioning in determining the corner location?



(i) I, William B. Cochrane
 (type or print name) certify that the corner location shown on this record was determined by me or under my direction and control and that this U.S. Public Land Survey Monument Record is correct and complete to the best of my knowledge and belief.

William B. Cochrane October 7, 1986
 Signature Date

Survey requested by: [Signature] 3-9-87
 District Ranger Date